



Organization of Science Support Functions

T. L. Wilson

ESO

ALMA European Project Scientist



ARC Development

- *At the Community Day in 2002, the attendees voted to have a central node and a number of smaller nodes in the community*
- *This was followed up by a discussion in the ESAC, in Sept 2003.*
- *The result was Appendix C of ESAC Report*
- *This led to a report in which tasks were divided into*
 - *User Support*
 - *Science Support*



ARC Development

- **User Support:**
 - Phase 1: Proposal handling, scientific ranking, proposal preparation support,
 - Phase 2: Observation preparation support and review up to the preparation of scheduling blocks
 - Delivery of pipeline data products, basic data reduction support
 - archiving,

- **Science Support:**
 - ‘Advanced archive and data reduction operations’, that is support for users to reduce data at ARCs and ‘
 - Scientific community development and scientific support’, that is, internal postdocs at ARC, organize conferences, workshops and help to prepare responses to next generation calls

- ESAC requested EAB to set up a working group to examine this issue



ARC Working Group Report

- **Members:** Booth, Diamond, Guelin, Silva, Testi, Waelkens, Wilson (chair)
- With ESAC input, Produced an inventory of skills. This provides an input for making use of the wide variety of expertise in the European community
- **After Long Internal Discussions Majority Reached the Decisions:**
 - The division between ‘user support’ and ‘science support’ followed the in Appendix C of the ESAC report
 - ‘science support’ is unfunded but essential work
 - Establish a network of nodes with ESO as the central node.
 - This network of nodes needed **strong management**



European ARC Developments

- STC and ESO Council approved a ‘Call for Statements of Interest’
- This was sent to all ESAC members and institutes on 7 June 2004
- Deadline for a response to the ‘Call’ is 31 October 2004



ALMA Regional Center (ARC) Proposal

- There will be a North American ARC at the NRAO in Charlottesville, and a European ARC at ESO in Garching
- These will provide *User Support*:
 - Phase 1: Proposal handling, scientific ranking, proposal preparation support,
 - Phase 2: Observation preparation support and review up to the preparation of scheduling blocks
 - Delivery of pipeline data products, basic data reduction support
 - Archive operations
 - Additional ARC services are *not* funded in the basic ALMA plan: These activities are referred to as ‘science support’

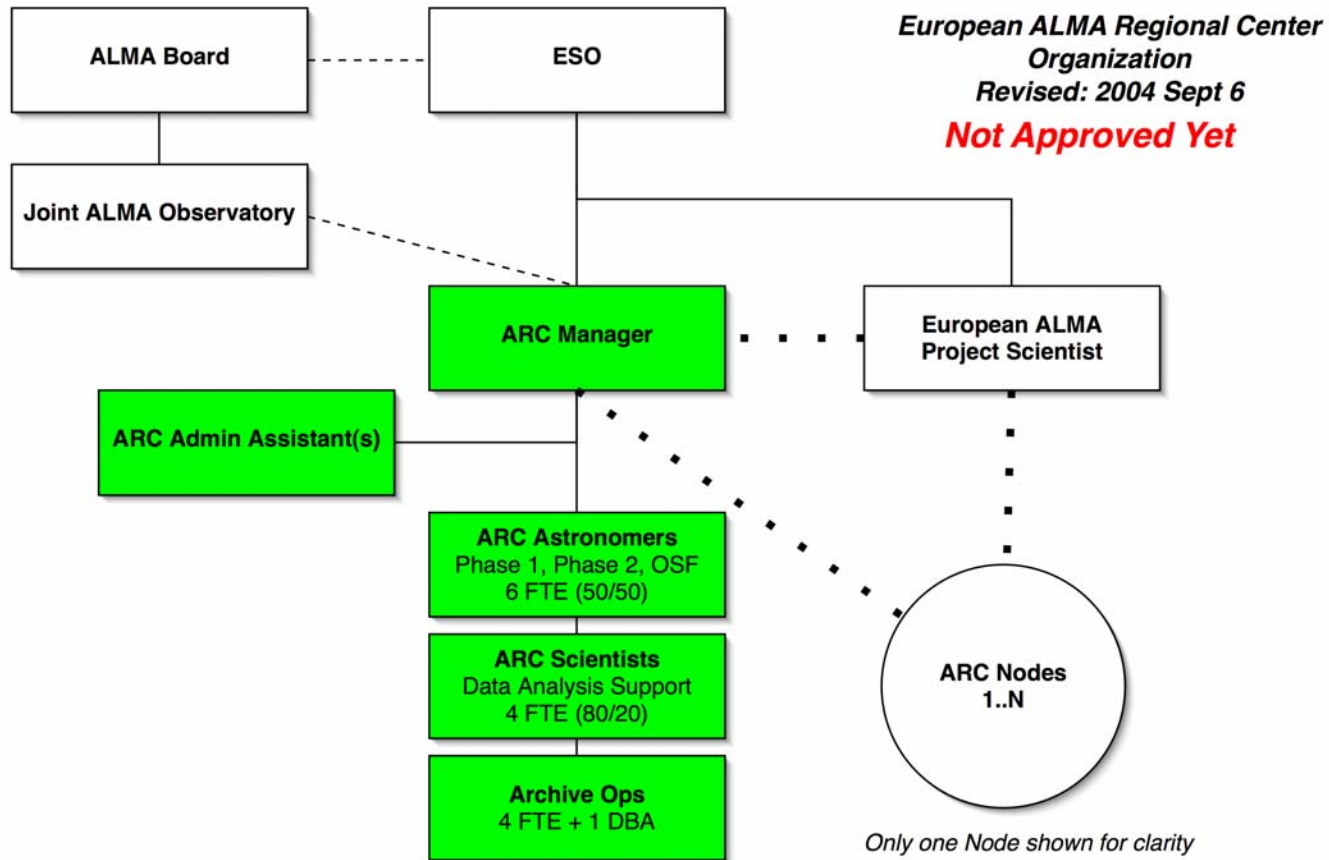


Science Support

- ‘Advanced archive and data reduction operations’, that is support for users to reduce data at ARCs and
- ‘Scientific community development and scientific support’, that is, internal postdocs at ARC, organize conferences, workshops and help to prepare responses to next generation calls



ARC Network Structure (D. Silva)





Proposed ARC Structure

- Central Node is at ESO
- Smaller nodes in various countries
- The ARC network will be guided by a committee of node members
 - Chaired by the ESO ARC manager
 - provide help in maintaining a high level of expertise at each of the nodes in the ARC
 - ESO would organize workshops, distribute information, e.g. on websites
<http://www.eso.org/projects/alma/newsletter/>
- nodes other than ESO supply face-to-face assistance with ALMA data reduction
- ESO provides help with the ALMA software, distributes this software
- The nodes will handle questions from users
 - The emphasis at each node will be on helping non-experts
 - If individual Nodes cannot provide an answer to more complex questions, the ALMA observatory will examine this and try to find answers
 - Each node in the European ARC network is encouraged to develop a specialization, such as mosaicing, polarization, very high fidelity imaging...



Proposed ARC Structure

- The nodes will participate in the formulation of future calls for proposals for development of ALMA software and hardware upgrades
- ESO will try to help with the preparation of an EU request for cross-national science support in FP7