



This page was intentionally left blank

This page was intentionally left blank

### Change record

| Issue/Rev. | Date       | Section/Parag. affected | Reason/Initiation/Documents/Remarks |
|------------|------------|-------------------------|-------------------------------------|
| 0.1.0      | 2002-03-15 | all                     | First internal release              |
| 0.3.0      | 2002-06-20 | update                  | Support of June commissioning       |
| 0.5.0      | 2002-08-21 | update                  | Support of August commissioning     |
| 0.5.1      | 2002-10-14 | update                  | Support of October commissioning    |
| 0.6.1      | 2002-11-12 | update                  | Support of November paranalization  |
| 0.8.0      | 2003-04-01 | all                     | Support of Operations               |
| 1.0        | 2003-07-21 | all                     | Public release                      |
| 2.0        | 2004-04-21 | update                  | Support of new FITS format, update  |
| 3.0        | 2004-09-30 | update                  | update                              |
| 4.0        | 2007-10-12 | update                  | update                              |

This page was intentionally left blank



# Contents

|          |                                                              |           |
|----------|--------------------------------------------------------------|-----------|
| <b>1</b> | <b>Introduction</b>                                          | <b>1</b>  |
| 1.1      | How to read this manual . . . . .                            | 1         |
| 1.2      | Reference documents . . . . .                                | 2         |
| 1.3      | Improvements in release 2.9.7 . . . . .                      | 2         |
| <b>2</b> | <b>Installation notes</b>                                    | <b>3</b>  |
| 2.1      | Hardware requirements . . . . .                              | 3         |
| 2.2      | Installation . . . . .                                       | 3         |
| 2.3      | Performance . . . . .                                        | 3         |
| 2.4      | Disclaimer . . . . .                                         | 4         |
| <b>3</b> | <b>Required input frames</b>                                 | <b>5</b>  |
| <b>4</b> | <b>Data reduction logical step sequence</b>                  | <b>7</b>  |
| 4.1      | Data reduction peculiarities . . . . .                       | 8         |
| <b>5</b> | <b>DRS implementation and options</b>                        | <b>9</b>  |
| <b>6</b> | <b>Available commands</b>                                    | <b>13</b> |
| 6.1      | Shell script . . . . .                                       | 13        |
| 6.1.1    | flames_demo.sh . . . . .                                     | 13        |
| 6.1.2    | flames_popul.sh . . . . .                                    | 14        |
| 6.1.3    | flames_steps.sh . . . . .                                    | 15        |
| 6.2      | Level 0 commands . . . . .                                   | 16        |
| 6.2.1    | TUTORI/FLAMES . . . . .                                      | 16        |
| 6.2.2    | DEMO/FLAMES . . . . .                                        | 16        |
| 6.2.3    | CDROM/FLAMES . . . . .                                       | 18        |
| 6.3      | Level 1 commands . . . . .                                   | 18        |
| 6.3.1    | SPLIT/UVES . . . . .                                         | 19        |
| 6.3.2    | FMTSTAB/FLAMES . . . . .                                     | 20        |
| 6.3.3    | PREDICT/FLAMES . . . . .                                     | 21        |
| 6.3.4    | Single fibre order table generation: ORDERPOS/UVES . . . . . | 22        |
| 6.3.5    | Master bias generation . . . . .                             | 23        |
| 6.3.6    | ORFSFF/FLAMES . . . . .                                      | 24        |
| 6.3.7    | WAVECAL/FLAMES . . . . .                                     | 26        |
| 6.3.8    | REDUCE/FLAMES . . . . .                                      | 27        |
| 6.4      | Level 2 commands . . . . .                                   | 31        |
| 6.4.1    | PREPPA/FLAMES . . . . .                                      | 32        |
| 6.4.2    | BPIMA/FLAMES . . . . .                                       | 33        |
| 6.4.3    | OFPOS/FLAMES . . . . .                                       | 33        |
| 6.4.4    | PREBKG/FLAMES . . . . .                                      | 35        |
| 6.4.5    | MSFFSZ/FLAMES . . . . .                                      | 36        |

|          |                                                                 |           |
|----------|-----------------------------------------------------------------|-----------|
| 6.4.6    | PREPSLIT/FLAMES . . . . .                                       | 36        |
| 6.4.7    | PREPFIBRE/FLAMES . . . . .                                      | 37        |
| 6.4.8    | PRENORM/FLAMES . . . . .                                        | 38        |
| 6.4.9    | EXTRACT/FLAMES . . . . .                                        | 40        |
| 6.4.10   | MERGE/FLAMES . . . . .                                          | 42        |
| 6.5      | Level 3 commands . . . . .                                      | 43        |
| 6.5.1    | BKFIT/FLAMES . . . . .                                          | 43        |
| 6.5.2    | FNDYSHIFT/FLAMES . . . . .                                      | 44        |
| 6.5.3    | FNDRYSHIFT/FLAMES . . . . .                                     | 45        |
| 6.5.4    | XTABMERGE/FLAMES . . . . .                                      | 46        |
| 6.5.5    | XTABDUMP/FLAMES . . . . .                                       | 47        |
| 6.5.6    | PLOT/UVES . . . . .                                             | 47        |
| 6.6      | Level 4 commands . . . . .                                      | 48        |
| 6.6.1    | MODOFF/FLAMES . . . . .                                         | 48        |
| 6.6.2    | FIBMSK/FILL . . . . .                                           | 48        |
| <b>7</b> | <b>Session examples</b>                                         | <b>49</b> |
| 7.1      | Using demo-level (Level 0) commands . . . . .                   | 49        |
| 7.2      | Using high-level (Level 1) commands . . . . .                   | 49        |
| 7.3      | Using low-level (Level 2) commands . . . . .                    | 49        |
| 7.4      | Using scripts . . . . .                                         | 50        |
| 7.5      | Data reduction chain using level-1 commands . . . . .           | 50        |
| 7.6      | Data reduction chain using level-2 commands . . . . .           | 52        |
| <b>8</b> | <b>Troubleshooting</b>                                          | <b>59</b> |
| 8.1      | Problems in context initialization . . . . .                    | 59        |
| 8.2      | Problem in using display with 32 bits depth computers . . . . . | 59        |
| 8.3      | Problem using the scripts . . . . .                             | 60        |
| 8.4      | PREDICT/FLAMES . . . . .                                        | 61        |
| 8.5      | PREPSLIT/FLAMES . . . . .                                       | 62        |
| 8.6      | PREPFIBRE/FLAMES . . . . .                                      | 62        |
| 8.7      | EXTRACT/FLAMES . . . . .                                        | 63        |
| 8.8      | EXTRACT/FLAMES . . . . .                                        | 63        |
| 8.9      | Object information given on plots of merged spectra . . . . .   | 65        |
| <b>A</b> | <b>DRS customization</b>                                        | <b>67</b> |
| A.1      | FLAMES-UVES pipeline data reduction parameters . . . . .        | 67        |

# Chapter 1

## Introduction

This document describes the functionality of the pipeline and Data Reduction Software (henceforth DRS) for data obtained using the FLAMES/UVES facility at the ESO VLT Kueyen telescope. Updated informations and releases of the present documentation can be obtained at the following URL: <http://www.eso.org/pipelines>. Additional information is provided by the correspondent Quality Control pages that can be found at the following URL: <http://www.eso.org/observing/dfo/quality/>. Users can submit problem reports either by issuing a software problem report (using the tool accessible internally to Paranal and Garching Operations) or by sending an e-mail to [midas@eso.org](mailto:midas@eso.org) or to [usg-help@eso.org](mailto:usg-help@eso.org). The pipeline to reduce FLAMES-UVES data has been developed as an extension of the UVES pipeline. This last is described in [1]. Users not familiar with the UVES pipeline should read [1].

A VLT pipeline is a subsystem of the Data Flow System (DFS) with the task to do automatic data reduction of calibration and science frames. It is used by Paranal Science Operations (PSO) to automatically (on-line) reduce frames and thus have a quick-look at the data to assess the health of the instrument and the quality of calibrations and observations and decide on real time if an observation needs to be repeated. Moreover Garching Data Flow Operations (DFO) uses it off-line to perform more detailed quality control and instrument trending, preparing master calibrations and reducing science observations for service mode observations.

A set of optical fibres (up to 8 at a time) brings the light collected on the focal plane to the UVES (Ultraviolet-Visual Echelle Spectrometer) spectrograph. The fibres can be positioned on the focal plane as the observer chooses, using the FLAMES fibre positioner (for more information on the FLAMES VLT facility, please see [4]).

Every observation performed with this powerful instrument contain a very rich amount of information, that needs a specialized software such as this DRS to be extracted properly, even when not all fibres are actually being used. The DRS has been designed to work well within known hardware constraints, such as the instrument mechanical stability limits, or availability of calibration data. The reliability and accuracy of the data reduction procedure do indeed depend sensitively on the “goodness” of the calibration data used in the reduction. **Although the DRS has been designed to be flexible with respect to small mismatches between calibration and science data, the best results will be obtained using calibrations that are taken as “close” as possible to the science observations. Here “close” does not mean necessarily “close in time” but more “under the same ambient conditions”.** In fact, it is now known that the apparent placement of fibres on the UVES detector changes according to local temperature and pressure, and of course after instrument setup changes.

### 1.1 How to read this manual

This manual is addressed to users who likes to reduce FLAMES-UVES data at their home institutes. If the user prefers not to follow the order proposed we suggest to read chapter 2 to know how to install the software and be advised about what are the present hardware and software requirements. Chapter 3 lists all the data necessary to reduce a FLAMES-UVES science. Next we suggest the user, after having read chapter 4 to have an overview of the data reduction sequence, to try practical examples as described in chapter 7.

These examples run FLAMES-UVES and UVES context commands which are summarized in chapter 5 and described in detail in chapter 6 and on the on-line help. The last three mentioned chapter and the on line help should be the most useful to consult also for users who have got some practice of the commands. In case of problems we have included also a troubleshooting section (see chapter 8). Finally for users very expert in this software usage, appendix A gives a description of any MIDAS keyword used as parameter default for the provided data reduction commands. Our advice to the user is not to change such defaults, but instead properly choose command parameter values.

## 1.2 Reference documents

- |     |                                                                                                                                                                                                                                                         |                            |
|-----|---------------------------------------------------------------------------------------------------------------------------------------------------------------------------------------------------------------------------------------------------------|----------------------------|
| [1] | UVES Pipeline User's Manual<br><a href="http://www.eso.org/pipelines">http://www.eso.org/pipelines</a>                                                                                                                                                  | VLT-MAN-ESO-19500-2964     |
| [2] | FLAMES-UVES Data Reduction Software Design and Architecture Report<br><br><a href="http://www.eso.org/org/dmd/DFS-related-papers.html">http://www.eso.org/org/dmd/DFS-related-papers.html</a>                                                           | VLT-TRE-ITA-13750-0002     |
| [3] | Automatic data reduction in support of the FLAMES-UVES VLT facility<br>Proceedings of the SPIE, Volume 4844, pp. 310-320 (2002).<br><a href="http://www.eso.org/org/dmd/DFS-related-papers.html">http://www.eso.org/org/dmd/DFS-related-papers.html</a> |                            |
| [4] | FLAMES User Manual<br><a href="http://www.eso.org/instruments/flames/manuals.html">www.eso.org/instruments/flames/manuals.html</a>                                                                                                                      | VLT-MAN-ESO-13700-2994     |
| [5] | The FLAMES-UVES Pipeline                                                                                                                                                                                                                                | The ESO Messenger, 118, 8. |

## 1.3 Improvements in release 2.9.7

- We include a more accurate ThAr reference line catalog.
- Some compilation warning have been fixed to improve portability.

# Chapter 2

## Installation notes

### 2.1 Hardware requirements

We suggest to have at least 512 MB RAM and 40 GB HD. The DRS will still run on systems with less RAM, but much more slowly. In this case, we recommend to have the (main) swap partition on a physically different disk with respect to the one containing the input and/or output data, to minimise disk thrashing. In particular in case of I/O bound systems we suggest to have input raw data on a physically different disk with respect to the one on which one runs the process.

A complete data reduction using the scripts produces about 2 GBytes of data.

### 2.2 Installation

We assume that the user has defined the environment variables MIDASHOME and MIDVERS, and that the MIDAS release is 07SEPp11.1. The user will get a file called fluves\_cdrom\_2.9.7.tar.gz. This can be installed as follows. If rel\_dir is the installation directory:

- `mv fluves_cdrom_2.9.7.tar.gz rel_dir`
- `cd rel_dir`
- `gunzip fluves_cdrom_2.9.7.tar.gz`
- `tar xvf fluves_cdrom_2.9.7.tar`
- `cd fluves`
- `./setup.sh`
- follow the instructions displayed at the end of the installation

### 2.3 Performance

According to our test beds, on Linux OS based systems our data reduction software performs better than on other proprietary OS. A factor 2.2 difference has been measured between running the script flames\_popul.sh on a PC (2 AMD 1.800 CPUs, 2 GB RAM, GNU/Linux OS, ReiserFs filesystem) and an HP J5600 with 1GB RAM HP-UX OS, and a standard DFS installation (MAR2003/dfs-4\_7). The Sun-Solaris 5.8 platform is a factor 2.6 slower than the PC-Linux.

## 2.4 Disclaimer

This release has been tested on Intel-Linux Scientific Linux 40, Intel centrino Linux Fedora 6, Sun-Solaris 5.8 systems. We cannot guarantee on other systems. In particular we are aware that some FLAMES-UVES commands are failing on an Digital Alpha (64 bit architecture) Linux (Suse 7.1) platform, and on AMD (64 bit architecture) Linux (Suse 10.2).

## Chapter 3

# Required input frames

The following calibration data are needed by the DRS to correctly reduce your science exposures:

- **Format-check frames**
- **Bias frames (optional)**
- **Single Fibre Order definition frames**
- **Slit flat-field frames**
- **Fibre flat-field frames: odd, even, all fibres**
- **Fibre wavelength-calibration frames**

The DRS will not work if any of these data is missing. The only possible exception to this statement is the Format-check frame(s), which is strictly needed for *automatic, unattended* data reduction. For interactive data reduction, Order definition frames (see below) can substitute them, with some user intervention (wavelength calibration without formatcheck frames is interactive).

Dark frames are usually not provided. DFO usually measures the Dark count level and provide this as a number to be subtracted during data reduction. Moreover we assume one has available an appropriate **arc lamp line reference table**. This table is provided as part of the CDROM distribution under the directory fluves/calib with filename thargood\_3.tfits. This table has been improved with respect to the previous one, thargood\_2.tfits which we still provide in the CDROM release.

Calibration frames consist of bias, flat-field frames, and wavelength-calibration frames. Peculiar of this data reduction is instead the need by the DRS of different types of flat-fields, some of which are taken through the fibres (using the OzPoz calibration unit), and some using the UVES slit (using the UVES calibration unit). Moreover, as in the UVES pipeline, the proper support of data in FIBRE mode foresees the use of special Format-check frames, this time taken illuminating the simultaneous calibration fibre only.

The Format-check frame has a key role for automatic, non-interactive data reduction; its comparison with a physical model of the instrument provides a first-order approximation for the order/fibre trace positions and a first-order approximation of the wavelength calibration relation.

While the first-order approximation of the order-fibre positions could be derived from an order definition frame, wavelength calibration without a Format-check frame would necessarily involve the interactive identification of a few lines of the Th-Ar lamp, making fully automatic data reduction impossible.

The slit flat-fields are used to eliminate pixel-to-pixel effects. The fibre flat-fields serve instead to locate the fibre positions, both relative to one another and absolute, within some tolerance; to know the cross-sectional profile of each fibre at each wavelength; and to determine the relative throughput of different fibres. These fibre flat-fields are only usable if the fibre traces fall in regions illuminated in at least one of the slit flat-fields; fibres whose light falls, even in part, in dark regions of the slit flat-fields are discarded. The DRS considers as really flat only a subregion of each slit flat field discarding a few pixels at the flat field border.

To properly evaluate the background level and avoid overlapping of orders, each slit flat field has to be taken with a limited slit aperture. To cover all the fibres (allowing also for some variability in their placement)

several slit flat fields are thus necessary, taken with different offsets with respect to a central position and overlapping between each other.

The wavelength calibration frames must be taken through the same set of fibres as the science frame.

The fibres' images on the detector are so closely packed that the cross-sectional profiles of adjacent fibres overlap to some non-negligible extent. Therefore, a single flat-field frame, would not yield enough information on individual fibres to perform a correct data reduction. Instead, the DRS requires fibre flat-fields on which the fibres can be clearly separated, such as one containing only odd-numbered fibres and another containing only even-numbered fibres.

The order definition frame, if taken with the simultaneous fibre, could also be used as an additional flat-field frame covering the simultaneous calibration fibre. Such inclusion is necessary to be able to extract the simultaneous calibration fibre. In such a case one would add it in the pool of odd-even fibre flat fields (see below), and this set of frames would thus contain completely separable images of all fibres.

In addition to the above, an all-fibre flat-field is needed to correct for relative throughput differences between odd and even fibres. This can be replaced by a Nasmyth screen all-fibre flat-field for higher accuracy.

If it is planned to observe using the simultaneous calibration fibre, it is also necessary to have in the calibration data a ThAr frame with the ThAr lamp feeding all the same fibres used during the night (7OzPoz+1SimCal) as well as an all fibre flat-field with the flat-field lamp feeding all the same fibres used during the night (7OzPoz+1SimCal). This is the minimum fibre flat-field set usable by the DRS.

We would like to emphasize the importance of having "proper" calibration data to be able to reduce the science observations with best quality. For example, if because of thermal shifts the available slit flat-fields do not cover the position where a (science-frame) fibre is located, this fibre will be discarded and its data is unusable. The same is true if fibre positions in the science-frame are shifted too much with respect to the corresponding positions of the fibre flat-field frames used to do the data reduction. This may occur in case of automatic on line pipeline data reduction on Paranal where usually the calibration data base is updated with a one month time scale. Moreover, the cross-sectional profiles of the fibres may change e. g. due to slightly different focusing. Since this, in turn, changes the contamination between adjacent fibres, a significantly different profile between calibrations and science data will lead to an incorrect deconvolution of the fibres. This release searches for possible instrument shifts along Y (i. e. perpendicular to dispersion) in the interval [-6,6] pixel. It satisfactorily reduced commissioning data which, due a still not completely stable instrument setup, were characterized by shifts between the science observation and the calibration in the range [-3.5,3.5]. It must be said that the source of such Y shift was discovered and fixed during an instrument software upgrade occurred before the beginning of FLAMES operations and so we do not expect the user will receive data affected by shifts between science and calibrations of more than one pixel. This release allows to interactively recover extraction also in cases of wider shifts (see command REDUCE/FLAMES at page 27).

The FLAMES positioner uses two plates and two distinct sets of fibres, with two distinct entrance positions in UVES.

A simultaneous calibration fibre for precise radial velocity measurements is also available. Using this fibre the spectral format changes, including (at most) 7 OzPoz fibres and 1 SimCal fibre. Therefore, all calibration data need to be taken with the same FLAMES plate and ( $\leq 8$  OzPoz fibres)/( $\leq 7$  OzPoz fibres+1 SimCal fibre) configuration as the actual science frames to be reduced.

Although we introduced means to detect and appropriately treat saturated pixels in the data reduction, it might happen that a saturated frame affects the data reduction. More specifically, while isolated saturated pixels can be easily detected by the DRS and excluded from the subsequent data reduction, strongly saturated emission lines can produce a very irregular distribution of scattered light on the frame, causing a poor background subtraction and, as a consequence, wrong results in the determination of shifts to be applied to each fibre (correlation step). In particularly pathological cases, this may lead to a failure of the automatic data reduction procedure, and require manual intervention to properly extract the data.

## Chapter 4

# Data reduction logical step sequence

Here we outline the logical sequence of steps which are needed to perform a complete spectral extraction of FLAMES/UVES data. All these operations can be carried out using commands in the FLAMES context. Initially all FITS frames need to be splitted using the command SPLIT/UVES to convert them into MIDAS format, properly orient and classify them. Examples of data reduction are in chapter 7.

1. For most frames (fibre and slit flat-fields, science frames) a variance frame and a bad-pixel mask must be created.
2. First, a so-called format-check frame is examined. This frame must have been taken with a single fibre illuminated by a (Th-Ar) wavelength-calibration lamp, and all other fibres dark. This frame is compared with a physical model of the CCD illumination, with the help of an appropriate table of lines emitted by the calibration lamp, to derive a first guess of the order positions and of the wavelength-calibration solution.
3. The whole set of fibres is considered (or at least those used in the science exposure), by processing both an odd-numbered- and an even-numbered fibre flat-field frames. In this way a complete (raw) fibre-order position table is obtained.
4. From the latter, the inter-order (background) table is computed, for later computation and subtraction of scattered-light contamination.
5. Slit flat-field frames are processed. At least two half-slit flat-fields are needed to cover the fibre-illuminated region without overlapping, and these are combined and normalized. They will be used to remove pixel-to-pixel effects later. Associated variance frames and bad-pixel masks are also created.
6. odd/even fibre flat-fields are processed. These frames contain the required information on the fibre cross-dispersion profile, and need to be input as separate odd/even fibre frames since adjacent fibres have partially overlapping profiles. Fibres for which there is no corresponding slit-flat-field information are ignored. The frames are corrected for background light, and associated variance frames and bad-pixel masks are created.
7. The algorithm requires also an all-fibre flat-field frame, to compute the relative throughput among the odd and even fibres. It is treated as if it were a science frame, with the same extraction procedure, to obtain for each fibre and order a wavelength-dependent normalization (instead of a spectrum). Since the FLAMES context includes two extraction methods (standard and optimal), the same choice is possible to extract the fibre normalizations here. Moreover, the all-fibre flat-field frame is also used as a reference for the positions of all fibres, since they are simultaneously lit here. For this purpose, the cross-dispersion shifts between the fibre positions in the odd and even fibre flat-field frames are computed with this common reference, and this additional information is stored in the order-fibre table.
8. Wavelength calibration is done, using a fibre frame with each fibre illuminated by a ThAr lamp, the guess line and fibre-order tables determined from previous data reduction steps. This step extracts each fibre spectrum, looks for ThAr lines and identifies them with help of a guess solution.

9. Eventually, the science spectra are extracted, either using standard or optimal extraction. Because of UVES stability limitations, there may be shifts between the fibre images in the flat-fields and in the science frames. These shifts are expected to occur in the cross-dispersion direction and to be at most  $\pm 1$  pixel. Since especially optimal extraction is extremely sensitive to such shifts (spectra with large S/N cannot be extracted satisfactorily for shifts larger than 0.1 pix), the extraction routine computes the value of the shift (using a correlation-function method), and applies the opposite shift to the fibre flat-fields (that's why pixel-to-pixel effects need to be computed separately using slit flat-fields). After doing that, the optimal extraction is performed using the fibre flat-fields as a model to fit the science frame at every wavelength (the fit amplitudes are the extracted spectra at each wavelength), using at the same time the fibre profile information to deconvolve the partial fibre overlap. Standard extraction is somewhat simpler, doing only a sum of the science frame fibre spectra over a pre-defined window across dispersion, without fitting, but including also a deconvolution of fibre cross-contamination.
10. Next, extracted spectra are wavelength-calibrated.
11. Last, wavelength-calibrated, merged spectra are created.

## 4.1 Data reduction peculiarities

The data reduction software design to reduce FLAMES-UVES fibre-echelle mode data (described in [2], [3] and [5]) has some data reduction peculiarities for example with respect to the standard echelle data reduction, or with respect to the extraction of fibre spectra designed for FEROS.

With respect to a standard echelle package:

- The fibre flat field spectra are used as "true" physical model of the light distribution on the detector in the optimal extraction, instead of some analytic approximation (e.g. as in UVES-echelle mode where a Gaussian+constant function distribution is used).
- A very good solution of the adjacent fibre contamination (which is a peculiar problem of fibre-fed multi-object spectrographs with close packed fibres and thus does not occur in echelle mode) is achieved.
- Error propagation is thoroughly performed from beginning to the end of the data reduction obtaining analytical pixel-to-pixel variances.
- Spectra corresponding to different fibres, having a different fibre throughput, are corrected giving reliable relative fibre throughputs.
- Thanks to the use of three different kind of flat-field spectra (single fibre, odd-even-all fibres, slit flat fields) usually the final merged spectra have a very high quality, in which any residual oscillation artifacts (still present in some high S/N UVES echelle extracted spectra) are well below the noise level.

With respect to FEROS we have the same difference as before with an additional one:

- In FEROS the flat fielding is done on the extracted spectra, extracting before the science and the flat field and dividing the first by the latter. Although this procedure has empirically been shown to lead to negligible differences with respect to the "correct" one, we still use the "correct" one (first correct science by flat field, next extract the spectra).

The adopted data reduction together with to the mentioned pros implies a number of contra. Essentially we have two. We need many calibrations, for example comparing, many more than, for example, UVES operated in echelle mode.

The achieved very good extraction quality is paid with a quite intensive computational cost. On Paranal the hardware dedicated to data reduction in support of FLAMES-UVES changed from the probably more reliable (and expensive) HP-UX architecture to the faster PC-Linux architecture. To improve even more computational performance we had to define additional simplified (and with lower quality products) data reduction modes ("fast" and "quick") just in support of operations even if at the moment they are not used.

## Chapter 5

# DRS implementation and options

The DRS is implemented as a set of MIDAS commands, included in a new MIDAS context called FLAMES (Table 5.3). The FLAMES context needs, and thus automatically loads, the UVES one. The FLAMES context commands can be run individually (Level 2 commands), or called in sequence by other commands (Level 1 commands). Even higher-level commands (Level 0) are included, such as a tutorial. The pipeline uses level 1 commands.

The UVES pipeline command SPLIT/UVES has been updated to support also FLAMES-UVES data reduction. This command splits and re-orient the images contained in the input FITS file and additionally classify them creating and assigning a proper value to the MIDAS file descriptor DO\_CLASSIFICATION. Level 1 commands expect that all input data, listed in an input catalogue, are identified by the value of their descriptor DO\_CLASSIFICATION. Input catalogs of Level 2 commands instead recognize data by the value of their MIDAS descriptor IDENT.

In Table 5.1 we list the category Data Products (DPR) keywords for the currently supported data.

| Frame Type                     | TYPE                  | CATG    | TECH    | Note                                                     |
|--------------------------------|-----------------------|---------|---------|----------------------------------------------------------|
| Science frames                 |                       |         |         |                                                          |
| Science in OzPoz mode          | OBJECT,OzPoz          | SCIENCE | MOS     | 8 OzPoz fibres                                           |
| Science in SimCal mode         | OBJECT,SimCal         | SCIENCE | MOS     | 7 OzPoz, 1 SimCal                                        |
| Calibration fibre fed frames   |                       |         |         |                                                          |
| Bias                           | BIAS                  | CALIB   | IMAGE   | Same as UVES                                             |
| Dark                           | DARK                  | CALIB   | IMAGE   | Same as UVES                                             |
| Nasmyth Screen FF              | LAMP,FLAT,NASMYTH     | CALIB   | MOS     | Nasmyth Screen                                           |
| Wavelength calibration         | LAMP,WAVE,OzPoz       | CALIB   | MOS     | 8 OzPoz fed by ThAr                                      |
| Wavelength calibration         | LAMP,WAVE,SimCal      | CALIB   | MOS     | 7 OzPoz, 1 SimCal fed by ThAr                            |
| Odd FF                         | LAMP,FLAT,ODD,OzPoz   | CALIB   | MOS     | Odd Fiber FF, 4 OzPoz                                    |
| Even FF                        | LAMP,FLAT,EVEN,OzPoz  | CALIB   | MOS     | Even Fiber FF, 4 OzPoz                                   |
| All FF                         | LAMP,FLAT,ALL,OzPoz   | CALIB   | MOS     | All Fiber FF, 8 OzPoz                                    |
| Odd FF                         | LAMP,FLAT,ODD,SimCal  | CALIB   | MOS     | Odd fibre FF, 4 OzPoz                                    |
| Even FF                        | LAMP,FLAT,EVEN,SimCal | CALIB   | MOS     | Even Fiber FF, 4 OzPoz                                   |
| All FF                         | LAMP,FLAT,ALL,SimCal  | CALIB   | MOS     | All Fiber FF, 7 OzPoz                                    |
| Formatcheck                    | LAMP,FMTCHK,SimCal    | CALIB   | MOS     | 1 SimCal fed by ThAr                                     |
| Order Trace                    | LAMP,ORDERDEF,SimCal  | CALIB   | MOS     | 1 SimCal fed by Flat                                     |
| Special frames in echelle mode |                       |         |         |                                                          |
| Slit Flat Fields               | LAMP,SFLAT            | CALIB   | ECHELLE | 3 sets of 3 slit FF each<br>each set taken at diff Y pos |

Table 5.1: Required DPR keywords

The plate No. is identified through the keyword ESO.INS.OBSPLATE. Plate No. 1 corresponds to a keyword value equal to 1. Plate No. 2 corresponds to a keyword value equal to 2.

The keyword ESO.OCS.SIMCAL will be used to associate the proper master calibration frame to the input raw frame separating the cases in which the simultaneous calibration fibre is involved (value equal to 1) or not (value equal to 0).

When an accuracy better than 2% is required for the absolute fluxes, one should take flat fields using the Nasmyth screen and “attached templates”.

In Table 5.2 we list the DO\_CLASSIFICATION values for the currently supported data.

| Frame Type                   | DO_CLASSIFICATION |
|------------------------------|-------------------|
| Raw Frames                   |                   |
| ThAr line reference table    | LINE_REFER_TABLE  |
| Formatcheck frame            | FMTCHK_x          |
| Reference Formatcheck frame  | ARC_LAMP_FORM_x   |
| Single Order trace frame     | FIB_ORDEF_x       |
| Bias                         | BIAS_x            |
| Master Bias                  | MASTER_x          |
| Dark                         | DARK_x            |
| Slit Flat Field              | SFLAT_x           |
| Nasmyth Screen Flat Field    | FIB_FF_NASMYTH_x  |
| Wavelength Calibration frame | FIB_ARC_LAMP_x    |
| Odd Flat Field               | FIB_FF_ODD_x      |
| Even Flat Field              | FIB_FF_EVEN_x     |
| All Flat Field               | FIB_FF_ALL_x      |
| Science OzPoz                | FIB_SCI_x         |
| Science SimCal               | FIB_SCI_SIM_x     |
| Science COMBINED             | FIB_SCI_COM_x     |
| Data Products                |                   |
| MASTER Slit Flat Field       | MASTER_SFLAT_x    |
| DRS Setup Table              | FIB_DRS_x         |
| Guess Order Table            | FIB_ORD_GUE_x     |
| Guess Line Table             | FIB_LIN_GUE_x     |
| Background Table             | FIB_BKG_x         |
| Order-Fibre Table            | FIB_ORDEF_TABLE_x |
| Line-Fibre Table             | FIB_LINE_TABLE_x  |
| Fibre data* frames           | FIB_FF_D0n_x      |
| Fibre common frames          | FIB_FF_COM_x      |
| Fibre norm frames            | FIB_FF_NOR_x      |
| Fibre nsigma frames          | FIB_FF_NSIGMA_x   |
| Fibre sigma frames           | FIB_FF_S0n_x      |
| Fibre badpixel frames        | FIB_FF_BPn_x      |
| Slit FF data frames          | SLIT_FF_D0n_x     |
| Slit FF common frames        | SLIT_FF_COM_x     |
| Slit FF norm frames          | SLIT_FF_NOR_x     |
| Slit FF sigma frames         | SLIT_FF_S0n_x     |
| Slit FF badpixel frames      | SLIT_FF_BPn_x     |
| Slit FF bound frames         | SLIT_FF_BNDn_x    |

Table 5.2: List of frame types and corresponding values of the MIDAS descriptor DO\_CLASSIFICATION assigned by the command SPLIT/UVES. \*Note: x= REDL or REDU; n=1,2,..nflats where in case of slit flat fields NFLATS is a DRS keyword indicating the (automatically determined) minimum number of equalized flat fields which are necessary to cover the total Y span, while in case of the fibre flat fields it indicates the number of basic (uncontaminated) fibre flat fields, typically (but not necessarily) 2 (odd/even).

Level 2 commands provide more finely grained control over all phases of the data reduction, and hence may be used to fine tune all the parameters, tailoring them on specific data. Exploiting this requires, of course, a detailed understanding of the algorithms internally used by the DRS and the exact sequence of data reduction. To ease data reduction, the user may also benefit from the shell script, `flames_demo.sh`.

Similarly we include in section 7.1 an example procedure demonstrating how to create a catalogue with all the data needed for a complete data reduction using the command DEMO/FLAMES. The script `flames_demo.sh` and the command DEMO/FLAMES do data reduction assuming default setting for the data reduction parameters. This defaults usually provides robust and good quality data reduction but in some cases may not be the best solutions for the user's case.

If the user would like to do interactive data reduction, e.g. trying the effect of changing some data reduction parameters, s/he could use Level 1 or Level 2 commands. Level 1 commands are the one called in automatic data reduction by the pipeline. Those are the ones which contain most of the few changes in parameter setting done to make the pipeline more robusts to support operations. Level 2 commands have been left as much as possible unchanged to allow the experience user to get cutomize (at its own risk) his data reduction. An example showing how to use Level 1 commands in a data reduction chain is also given in section 7.5. An example showing how to use Level 2 commands in a data reduction chain is also given in section 7.6.

The data reduction can be performed in two ways. One may choose between "optimal" or "standard" ex-

traction methods, which differ essentially in the weights assigned to the pixel data across a fibre at each wavelength. Moreover, the Optimal extraction iteratively applies a kappa-sigma clipping of bad pixels, while the Standard extraction works in one straight iteration. Due to these reasons, the Optimal extraction yields to the best signal-to-noise ratio, especially for under exposed spectra, as it attempts to make full use of all the information contained in the science frame; on the other hand, it can be more sensitive to uncorrected mismatches between science and calibration data, and it is computationally much more intensive. Standard extraction does not use weights, but a user-defined window size, which can be restricted to the fibre core if mismatches between science and calibration data are found; it is therefore more robust, at the price of a reduced sensitivity. Both methods include a deconvolution of adjacent fibre cross-contamination. To improve performance, in support of PSO, we have added to the normal (and accurate) data reduction mode also a so called quick & dirty data reduction (which doesn't need slit flat fields and does not correct for possible fibre shifts between observations and calibrations), and an intermediate mode, the so called "fast" one, (which still needs the slit flat fields but does not correct for possible instrument shifts between observations and calibrations). Each mode support "optimal" and "standard" extraction.

In addition the command SPLIT/UVES from the UVES context has been upgraded to support FLAMES data reduction and is supposed to be run as first command to properly split and orientate input raw frames and classify them.

|                                                                     |                                                                                                                                                                                                                             |
|---------------------------------------------------------------------|-----------------------------------------------------------------------------------------------------------------------------------------------------------------------------------------------------------------------------|
| Level 0 commands: commands needed to test the reduction pipeline    |                                                                                                                                                                                                                             |
| TUTORI/FLAMES                                                       | (none)                                                                                                                                                                                                                      |
| DEMO/FLAMES                                                         | in_cat [method] [filter_switch] [saturation_threshold]                                                                                                                                                                      |
| CDROM/FLAMES                                                        | in_cat [method] [filter_switch] [saturation_threshold]                                                                                                                                                                      |
| STEPS/FLAMES                                                        | in_cat [method] [filter_switch] [saturation_threshold]                                                                                                                                                                      |
| Level 1 commands: main commands for pipeline data reduction         |                                                                                                                                                                                                                             |
| SPLIT/UVES                                                          | input [catalog] [trim]                                                                                                                                                                                                      |
| PREDICT/FLAMES                                                      | format_check_frame [out_cat] line_table [xy_mbox] [xy_trans] [angle]                                                                                                                                                        |
| FMTSTAB/FLAMES                                                      | format_check_frame [out_cat] ref_cat [xy_mbox] [xy_trans] [angle]                                                                                                                                                           |
| MASFLAT/FLAMES                                                      | in_cat out_cat ref_cat [bias_meth] [dark_meth] [bkg_meth]                                                                                                                                                                   |
| MASTER/FLAMES                                                       | in_cat out_cat ref_cat [bias_meth] [dark_meth] [bkg_meth]                                                                                                                                                                   |
| ORFSFF/FLAMES                                                       | in_cat out_cat ref_cat [method] [bias_val] [filter_sw]<br>[saturation_threshold] [sff_fibff,drs_cubify]                                                                                                                     |
| WAVECAL/FLAMES                                                      | in_cat out_cat ref_cat [mode] [resol] [fits] [precision]                                                                                                                                                                    |
| REDUCE/FLAMES                                                       | in_science_cat out_science_cat ref_cat [extract] [bias_val]<br>[filter_sw] [saturation_threshold] [drs_sci_cubify,drs_cubify]                                                                                               |
| Level 2 commands: step-by-step reduction commands                   |                                                                                                                                                                                                                             |
| PREPPA/FLAMES                                                       | frame_cat [bad_pix_mask] [filter_switch] [x_width,y_width] [n_iterations]<br>[kappa_sigma_thres] [apply_cuts_switch] [low_cut,high_cut]                                                                                     |
| BPIMA/FLAMES                                                        | template_ima [out_bad_pix_ima] [cut_levels]                                                                                                                                                                                 |
| OFPOS/FLAMES                                                        | [guess_order_table],[order_fibre_table],[in_fibre_cat],[max_extend]<br>[nb_traces] [widthi] [hough_trans_switches] [thresi]<br>[x_degree,ord_degree] [hot_thres,step]<br>[cluster,slope_min,slope_max,step_slope,step_orig] |
| PREBKG/FLAMES                                                       | order_table back_table [n_windows] [x_width_max,y_width_max]                                                                                                                                                                |
| MSFFSZ/FLAMES                                                       | in_slit_ff_frame [order_fibre_table]                                                                                                                                                                                        |
| PREPSLIT/FLAMES                                                     | in_slit_cat order_fibre_table out_slit_cat out_slit_name                                                                                                                                                                    |
| PREPFIBRE/FLAMES                                                    | in_fibre_cat,(slit_ff_cat) back_table order_fibre_table<br>[threshold] out_fibre_cat out_fibre_name [method]                                                                                                                |
| PRENORM/FLAMES                                                      | all_fibre_ff_frame fibre_ff_cat,(slit_ff_cat) back_table,in_order_fibre_table<br>out_order_fibre_table [threshold] [method] [max_shift]/[window_size]                                                                       |
| EXTRACT/FLAMES                                                      | science_frame fibre_ff_cat,(slit_ff_cat) back_table,order_fibre_table<br>[out_spectra] [threshold] [method] [max_shift]/[window_size] [correl_pars]                                                                         |
| MERGE/FLAMES                                                        | in_spectrum rebin_base_name merge_base_name                                                                                                                                                                                 |
| Level 3 commands: useful commands (plotting/quality check commands) |                                                                                                                                                                                                                             |
| BKFIT/FLAMES                                                        | in_ima order_fibre_table back_table [kappa_sigma_thres] out_back_ima                                                                                                                                                        |
| FNDYSHIFT/FLAMES                                                    | input_frame fibre_cat slit_cat order_table [max_shift]                                                                                                                                                                      |
| FNDRYSHIFT/FLAMES                                                   | input_frame fibre_cat slit_cat order_table [max_shift]                                                                                                                                                                      |
| PLOT/UVES                                                           | fname [xrange] [yrange] [title] [hcopy] [fibre_drs_id]                                                                                                                                                                      |
| Level 4 commands: administration/extra commands                     |                                                                                                                                                                                                                             |
| MODOFF/FLAMES                                                       | formatcheck_frame                                                                                                                                                                                                           |
| FIBMSK/FILL                                                         | input_frame                                                                                                                                                                                                                 |

Table 5.3: Commands in the FLAMES context

# Chapter 6

## Available commands

This section describes all commands in the FLAMES context, and the sequence in which they need to be invoked in order to perform a complete spectral extraction. The FLAMES context inherits some features already present in the UVES context, but includes many others that are new, designed *ad hoc* for the fibre-fed spectrograph case. One may also run the following scripts instead of the full sequence of MIDAS commands. The context can be customized modifying the global keywords set in the procedure `$PIPE_HOME/uves/flammes/pipe/proc/flammes_def_drs_par.prg`. Many of the commands use as default parameter setting the values specified by the MIDAS keywords defined in that procedure. Another possibility is to give appropriate values in an interactive data reduction section (See Appendix A.1). We suggest the latter to the user. The parameter defaults has been chosen to insure robust and good quality data reduction. We suggest the user to use level 1 commands.

### 6.1 Shell script

In the `$PIPE_HOME/uves/flammes/scripts` directory, in addition to the scripts described in detail in the following paragraph, a number of executable files are also given, most of them called `flammes_”reduction_step”`, where “reduction\_step” is the name of the data reduction step to be performed. These can be used as templates to do your actual data reduction. It is important to notice that:

- the provided path+shell\_script or path+input\_frame must exist
- if one runs the shell\_scripts using an executable file or creates one putting a command or a file per line, using a `\` as line terminator, this `\` must be the last character of the line in that file, as in the provided templates. The last line of the file should not terminate with a `\`.

#### 6.1.1 flammes\_demo.sh

This script can be used to do a complete data reduction using defaults for data reduction parameters.

Syntax:

```
$PIPE_HOME/uves/flammes/scripts/flammes_demo.sh frame_list
```

Input:

- `frame_list`: ASCII list of a complete data reduction set, i.e. a set of FITS files comprising:
  - a **Th-Ar line reference table**
  - a **raw Format-check frame**
  - a **raw Order-definition frame**
  - **Raw Bias frames (usually 5 frames)**
  - **raw Slit flat-field frames (usually 3 sets of 3 frames each)**

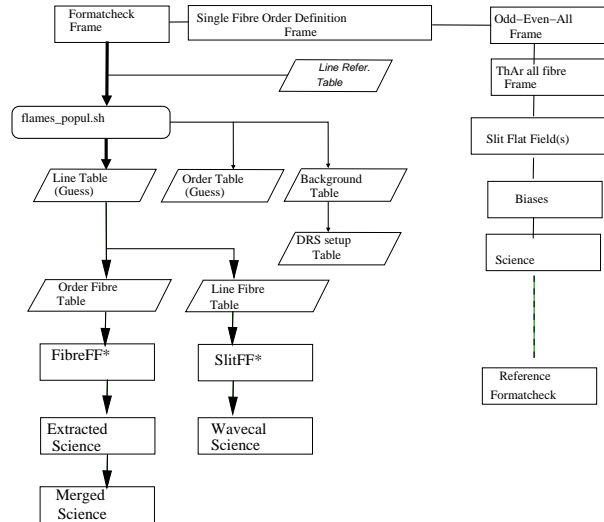


Figure 6.1: Data flow diagram for script flames\_demo.sh.

- **raw Fibre flat-field frames: odd, even, all fibres (3 frames)**
- **a raw Wavelength-calibration frame**
- **a raw Science frame**

#### Output:

- Guess line and order tables, DRS setup table (Format-check step, if order-definition frame is provided the order table is refined).
- all frames (except order-definition and format-check) receive an associated fake bad-pixel mask and a variance (sigma) frame.
- raw order-fibre table, order-fibre table, slit flat-field (slitff\*), and fibre flat-field (fibreff\*) frames.
- line tables.
- for each fibre: extracted, bias- and background-subtracted, flat-fielded science spectrum, rebinned science spectrum, merged science spectrum.

We think that this script, should be the easiest one to use for a complete data reduction with default parameters. Its output will be placed in the directory `$HOME/midwork/tmpwrk/`. This script uses the command `DEMO/FLAMES`. As described below this command also has some parameters with default values. If the user wants to do a slightly different data reduction, s/he may refer to the provided example and eventually customize it to his/her needs.

### 6.1.2 flames\_popul.sh

This script prepares a complete set of calibration frames to be used to reduce a science frame.

Syntax:

```
$PIPE_HOME/uves/flames/scripts/flames_popul.sh frame_list
```

Input:

- `frame_list`: ASCII list of a complete data reduction set, i.e. a set of FITS files as listed for the script flames\_demo.sh (except for the science raw frame which is not necessary in this case).

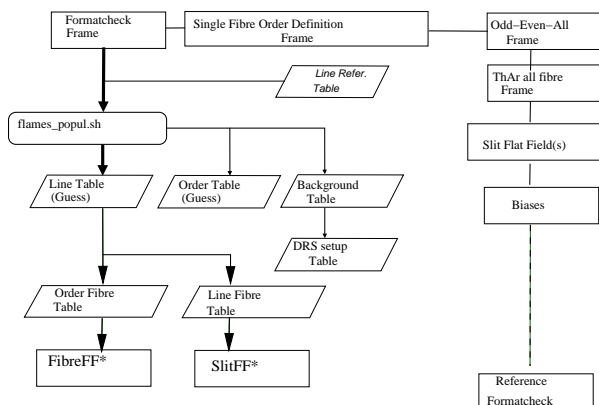


Figure 6.2: Data flow diagram for script flames\_popul.sh.

Output:

- Guess line and order tables, DRS setup table (Format-check step, if order-definition frame is provided the order table is refined).
- all frames (except order-definition and format-check) receive an associated fake bad-pixel mask and a variance (sigma) frame.
- raw order-fibre table, order-fibre table, slit flat-field (slitff\*), and fibre flat-field (fibreff\*) frames.
- line tables.
- for each fibre: extracted, bias- and background-corrected, flat-fielded science spectrum, rebinned science spectrum, merged science spectrum.

We think that this command should be the easiest one to use to generate a complete data base. Its output will be placed in the directory `$HOME/midwork/tmpwrk/`, and the generated data base in the directory `$HOME/midwork/tmpwrk/data/`.

### 6.1.3 flames\_steps.sh

This script can be used to do or repeat some particular step of data reduction.

Syntax:

```
$PIPE_HOME/uves/flames/scripts/flames_steps.sh frame_list <num>
```

Input:

- `frame_list`: ASCII list of the FITS files required for the data reduction one is interested in. The input depends by `< num >`
  - 0: Input is: a full list of raw data as for for flames\_demo.sh
  - 1: Input is: a formatcheck raw frame and a reference ThAr table. Additionally, if available, a not necessary input are also 2 splitted reference slit formatcheck frames for that setting. The CDROM contains them for each UVES wavelength setting in directory `fluves/calib` and have prefix `mfc`.
  - 2: Input are a list of bias frames (usually 5).
  - 3: Input are: 3 sets of 3 slit flat field each set. Two master biases, one for each chip, two drs setup tables, one for each chip.
  - 4: Input are: Raw data (Odd, even, all flat fields, a single fibre flat field, slit flat fields) and calibration data (guess order and DRS setup tables, master biases).

- 5: Input are: ThAr raw frame. DRS setup tables, guess line tables, order-fibre tables. Be careful to use input order-fibre table file names up 8 char max without extension (e.g. longname.tfits).
  - 6: Input are: science frame. slitff\* and fibreff\* frames, master biases, order-fibre tables, line-fibre tables.
- `< num >`: an optional number (0-6) indicating which data reduction step one would like to perform according to the following schema:
    - none: in this case it is assumed as it would be given 0.
    - 0: a complete data reduction comprising step 1-6.
    - 1: formatcheck step. Generation of guess order table used in 4, and guess line table used in 5.
    - 2: Master bias generation used in 3, 4, 6.
    - 3: Master slit flat field generation.
    - 4: Master slit flat field preparation and fiber-order table generation (used in 5, 6) and slitff\*.fits, fibreff\*.fits frames preparation (used in 6).
    - 5: wavelength calibration (used in 6).
    - 6: science reduction.

This script works similarly to the other (`flames_demo.sh`) except for the fact that while `flames_demo.sh` uses directly level 2 commands, `flames_steps.sh` uses level 1 commands. Moreover this script also allows to select and perform only a single step of the data reduction.

## 6.2 Level 0 commands

In this section we describe two commands which can do a complete data reduction.

### 6.2.1 TUTORI/FLAMES

The CDROM release also provides data to support the command TUTORI/FLAMES. This command uses these data to run the command CDROM/FLAMES which in turn does the entire data reduction. Please refer to the description of the command CDROM/FLAMES.

### 6.2.2 DEMO/FLAMES

Command Syntax: `DEMO/FLAMES in_cat [method] [filter_switch] [saturation_threshold]`

Input:

- `in_cat`: Input catalogue with all necessary data. No default.
- `method`: Extraction method, either "opt" or "std". The default is set by the MIDAS keyword `DRS_EXT_MTD` ("opt").
- `filter_switch`: Filter applied during PREPPA/FLAMES. Possible values are "none" or "median". The default is set by the MIDAS keyword `DRS_FILT_SW` ("none").
- `saturation_threshold`: Threshold used by PREPPA/FLAMES to detect saturated pixels. The default is set by the MIDAS keyword `DRS_PTHRE_MAX` (55000).
- `bias_method`: Bias subtraction method. Possible values are:
  - M: A given master bias is subtracted.

- <value>. The given value is subtracted.
- N: No bias subtraction.

The default is set by the keyword MIDAS DRS\_BIAS\_MTD.

#### Output:

- All possible outputs from the data reduction (see shell script, and other commands later on).

Command description: This command executes a complete data reduction.

A complete data reduction set, which must be listed in the input catalogue, is a sequence of FITS files as specified for the script flames\_demo.sh at page 49.

The user should look at the command sequence listed below as an example of what to do to run the DEMO/FLAMES procedure.

We assume that all needed data are in the MIDAS path.

```
create/icat ref.cat null DO_CLASSIFICATION

add/icat ref.cat flames_fmtchk.fits      ! format-check frame
add/icat ref.cat flames_sof_ff.fits      ! single-fibre order-definition frame
add/icat ref.cat flames_all_ff.fits      ! odd fibre flat-field frame
add/icat ref.cat flames_even_ff.fits     ! even fibre flat-field frame
add/icat ref.cat flames_odd_ff.fits      ! all fibre flat-field frame

add/icat ref.cat flames_thar.fits        ! wavelength-calibration frame
add/icat ref.cat flames_sci.fits         ! science frame

add/icat ref.cat flames_sff1.fits        ! slit flat-field frame #1
add/icat ref.cat flames_sff2.fits        ! slit flat-field frame #2
add/icat ref.cat flames_sff3.fits        ! slit flat-field frame #3
add/icat ref.cat flames_sff4.fits        ! slit flat-field frame #4
add/icat ref.cat flames_sff5.fits        ! slit flat-field frame #5
add/icat ref.cat flames_sff6.fits        ! slit flat-field frame #6
add/icat ref.cat flames_sff7.fits        ! slit flat-field frame #7
add/icat ref.cat flames_sff8.fits        ! slit flat-field frame #8
add/icat ref.cat flames_sff9.fits        ! slit flat-field frame #9

add/icat ref.cat flames_bias1.fits       ! bias frame #1
add/icat ref.cat flames_bias2.fits       ! bias frame #2
add/icat ref.cat flames_bias3.fits       ! bias frame #3
add/icat ref.cat flames_bias4.fits       ! bias frame #4
add/icat ref.cat flames_bias5.fits       ! bias frame #5

SPLIT/UVES ref.cat sref.cat
INDISK/FITS thargood_3.tfits thargood_3.tbl
ADD/ICAT sref.cat thargood_3.tbl
CONFIG/DISPLAY 800 600 0.8
DEMO/FLAMES sref.cat
```

### 6.2.3 CDROM/FLAMES

Command Syntax: CDROM/FLAMES in\_cat [method] [filter\_switch]  
[saturation\_threshold]

This procedure is a small modification of DEMO/FLAMES using master biases instead that raw biases. The reader may refer to that for a description.

Here we show the list of commands necessary to run it. We assume that all needed data are in the MIDAS path.

```
create/icat ref.cat null DO_CLASSIFICATION

add/icat ref.cat flames_fmtchk.fits      ! format-check frame
add/icat ref.cat flames_ordef.fits      ! order-definition frame
add/icat ref.cat flames_all_ff.fits     ! odd fibre flat-field frame
add/icat ref.cat flames_even_ff.fits    ! even fibre flat-field frame
add/icat ref.cat flames_odd_ff.fits     ! all fibre flat-field frame

add/icat ref.cat flames_thar.fits       ! wavelength-calibration frame
add/icat ref.cat flames_sci.fits       ! science frame

add/icat ref.cat flames_sff1.fits      ! slit flat-field frame #1
add/icat ref.cat flames_sff2.fits      ! slit flat-field frame #2
add/icat ref.cat flames_sff3.fits      ! slit flat-field frame #3
add/icat ref.cat flames_sff4.fits      ! slit flat-field frame #4

SPLIT/UVES ref.cat sref.cat
!In this tutorial we use a master bias
indisk/fits flames_mbia_redl.fits      flames_mbia_redl.bdf
indisk/fits flames_mbia_redu.fits      flames_mbia_redu.bdf
write/des flames_mbia_redl.bdf {UVES_IDSTRNG}/c/1/40 MASTER_BIAS_REDL
write/des flames_mbia_redu.bdf {UVES_IDSTRNG}/c/1/40 MASTER_BIAS_REDU

add/icat sref.cat flames_mbia_redl.bdf  >Null
add/icat sref.cat flames_mbia_redu.bdf  >Null
INDISK/FITS thargood_3.tfits thargood_3.tbl
ADD/ICAT sref.cat thargood_3.tbl
CONFIG/DISPLAY 800 600 0.8
CDROM/FLAMES sref.cat
```

## 6.3 Level 1 commands

FLAMES context command of level 1 are MIDAS wrappers of FLAMES context command level 2, 3 and 4 and other MIDAS commands on which the FLAMES-UVES pipeline is based.

To each pipeline recipe usually corresponds one FLAMES context level 1 command. These commands automatically recognize input frames on the basis of the value of the MIDAS file descriptor DO\_CLASSIFICATION added by the command SPLIT/UVES. These commands automatically add to each frame the descriptors required by the DRS. Next follows a textual description of each command in some cases along with a graphical description of the corresponding dataflow. In the graphical descriptions image frames are represented by rectangles; tables by parallelograms; recipes or their equivalent command by rounded rectangles; QC1 out-

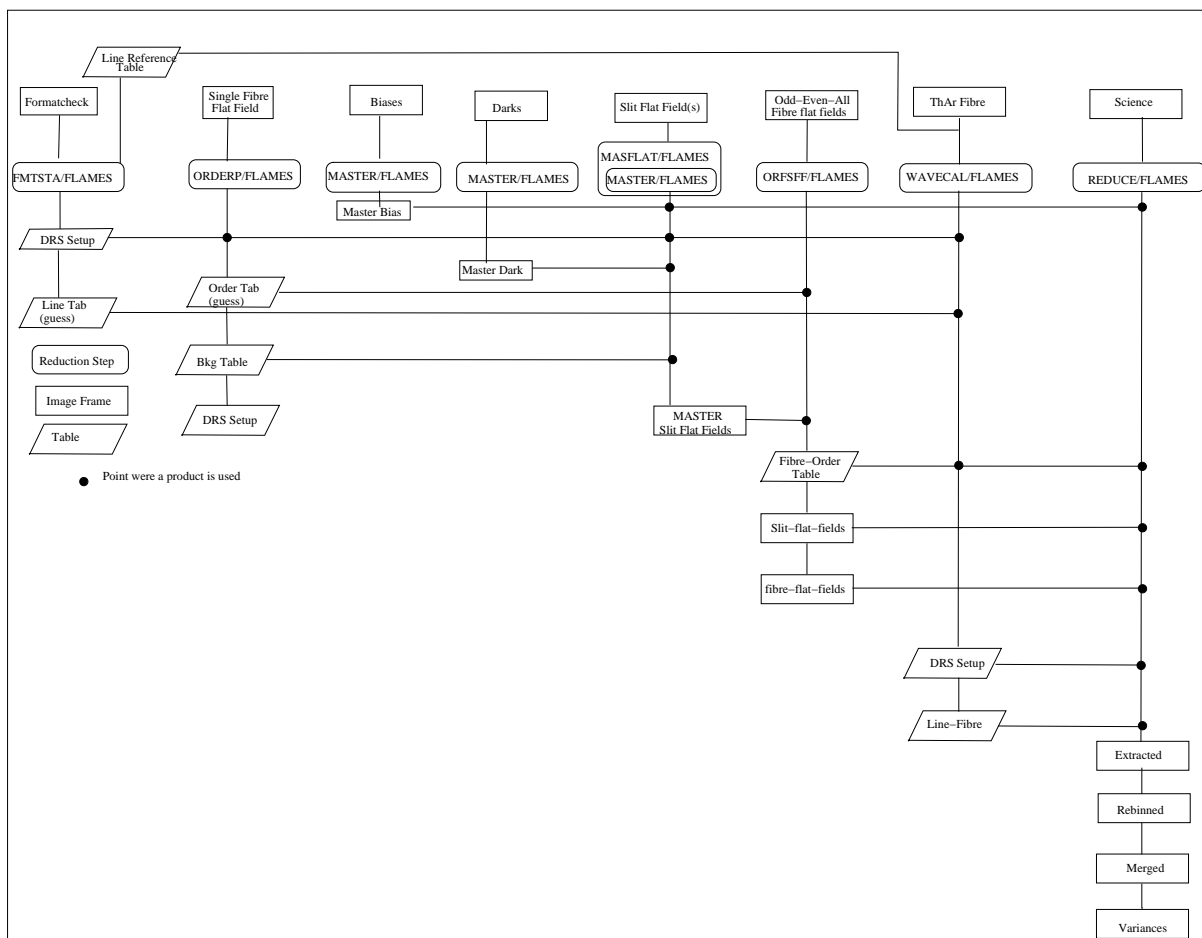


Figure 6.3: Illustration of the command level 1 complete data flow.

put represented by ellipses. Level 1 commands use data reduction parameters with defaults set by global keywords which in a few cases have been updated to make the pipeline data reduction more robust.

### 6.3.1 SPLIT/UVES

This command has been updated to support new and old UVES FITS format. This is a UVES context command which has been extended to support FLAMES data reduction. It can be used either as a Level 1 or Level 2 command to start data reduction. This command has been upgraded to support the new and old FITS format. It converts FITS files to BDF files (if necessary) and splits the BDF file into two parts, one file for each CCD. The catalog will be updated with the two new frames. For a RED UVES exposure it splits and flips the frame. For FLAMES frames it also executes the commands FIBMSK/FILL to create and set the FIBREMASK, MAXFIBRES MIDAS descriptors and then creates and sets the CHIPCHOICE MIDAS descriptor.

Command Syntax: `SPLIT/UVES input [catalog] [trim]`

Input:

- input: input frames may be specified in different ways:
  - as name.bdf MIDAS frame
  - as name.fits FITS file
  - as name.cat image catalog (FITS or BDF)

- `catalog`: output catalog with all produced output frames. The name of the catalog is by default: `split.cat`.
- `trim`: trim flag. Set to 1 to switch trimming ON, i.e. all pre- and postscan regions will be cut off. Switch OFF by setting trim to 0. Default: 1.
- Note:
  - The separation of the 2 chips of the RED arm of UVES is assumed to be at the center of the frame.
  - The command uses the following naming scheme for its output files:
    - `base_u.bdf`: extraction of the UPPER chip (MIT)
    - `base_l.bdf`: extraction of the LOWER chip (EEV)
 where `base` is the name of the input file without extension (`.bdf`, `.fits`)
  - The identification of the splitted frames may be done using the FITS keyword `ESO.PRO.CATG`, which has a suffix of `_REDL`, `_REDU`, respectively. Additionally, the MIDAS descriptor `DO_CLASSIFICATION` defined by the global keyword `UVES_IDSTRNG` will be updated. This descriptor is usually used for file type identification.

### 6.3.2 FMTSTAB/FLAMES

This command is an adaptation of the UVES context `FMTSTAB/UVES` to the FLAMES context (see [1]). We suggest the user to have a look also at [1], chapter 3, which provide useful plots to evaluate the quality of the guess solution obtained with the current frame.

During FLAMES commissioning proper offsets were determined for all the supported settings. We have also upgraded the command: if a shift of the spectral format in X or Y direction is greater than 2 pixels the command tries to autorecover point aggregation (with a limit of around 10-15 pix maximum allowed shift above which only an instrument realignment could recover the original precision).

In case master formatchecks are available and are added to the reference catalogue this command does also a stability check measuring the shift of the current formatcheck frame with respect to the master formatcheck.

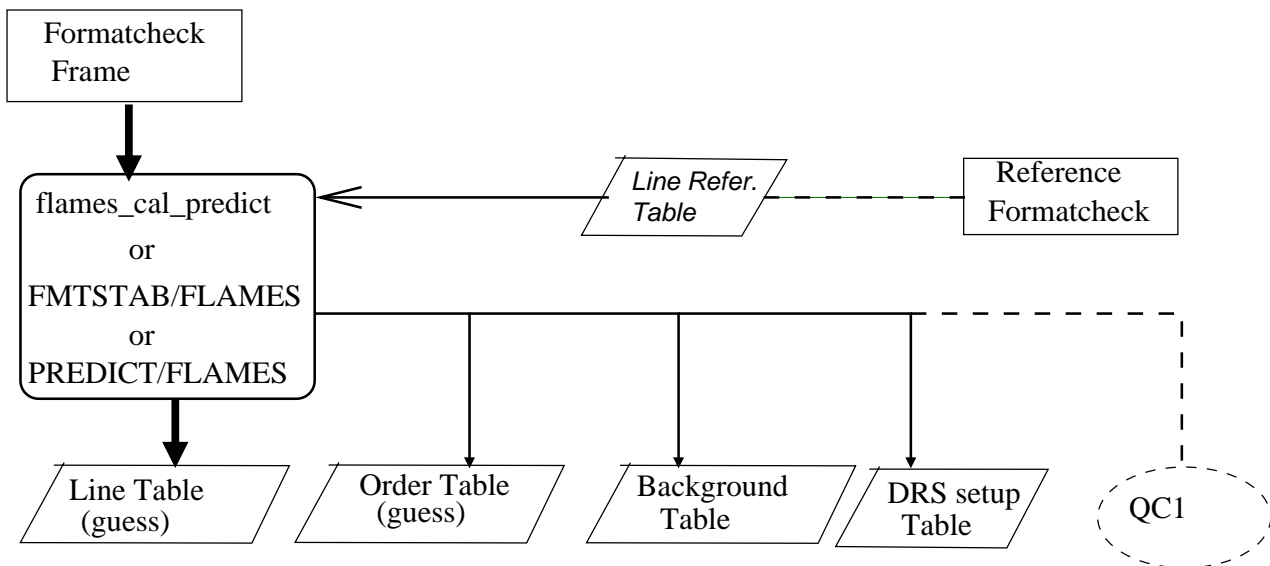


Figure 6.4: Illustration of the line table generation of the first guess solution based on the physical model of UVES. It is valid either for `FMTSTA/FLAMES` and `PREDICT/FLAMES`. The command `FMTSTA/FLAMES` performs a stability check if it has as input reference formatcheck frames. A so called Formatcheck frame is obtained with a arc lamp (ThAr) exposure and either a narrow slit or a single fibre.

Command Syntax: `FMTSTAB/FLAMES format_check_frame [out_cat] ref_cat [xy_mbox] [xy_trans] [angle]`

Input:

- `format_check_frame`: Frame taken with one single fibre illuminated with an arc lamp, and all other fibres dark. Must be either upper or lower chip, therefore `SPLIT/UVES` must be used first.
- `out_cat`: Optional output products catalogue. Set it to '+' to skip this option. Default is +.
- `ref_cat`: Optional output reference frame catalogue. Set it to '+' to skip this option. Default is +.
- `line_table`: Reference arc lamp line table, used for line identification.
- `xy_mbox`: A two-value, comma-separated parameter indicating the X and Y sizes of the search box within which a physical-model line-position prediction is matched with the actual position on the formatcheck frame. Default: 40,40.
- `xy_trans`: A two-value, comma-separated parameter indicating respectively the X and Y translation values respect to a standard configuration to be applied to the physical model solution to obtain a good match with the actual formatcheck frame. Proper parameter for each instrument setting can be found using the command `MODOFF/FLAMES`.
- `angle`: A three-value, comma-separated, parameter with angle offsets of the echelle, the cross disperser and the CCD in degrees. Default: 0,0,0.

Output:

- Same as `FMTSTAB/UVES`, `PREDICT/FLAMES`, `PREDICT/UVES`

In particular, in the end the procedure shows the average and median X and Y shifts of the actual format-check frame with respect to the reference format-check frame.

Command description:

Built around the command `FMTSTA/UVES`, to derive guess order table, line table, and background table from format-check frame. See also description for `PREDICT/FLAMES`.

Creates a table of measured line positions for the actual format-check frame and the given reference format-check, and through a correlation of the two determines the average and median X and Y shift of the actual format-check frame with respect to the reference format-check frame. This step is successful when the the final "physical model plots" show a good aggregation, in particular the plot of XDIF (differences between model predictions and data points along dispersion direction) vs X (dispersion direction) and YDIF (differences between model predictions and data points along cross dispersion direction) vs Y. (cross dispersion direction). Please consult [1] for clarifications.

### 6.3.3 PREDICT/FLAMES

This command is an adaptation of the UVES context command `PREDICT/UVES` to the FLAMES context (see [1]). We suggest the user to have a look also at [1], chapter 3, which provide useful plots to evaluate the quality of the guess solution obtained with the current frame. It is supposed to be used in combination with the command `MODOFF/FLAMES`, which gets the appropriate physical model shifts.

Command Syntax: `PREDICT/FLAMES format_check_frame [out_cat] line_table [xy_mbox] [xy_trans] [angle]`

Input:

- `format_check_frame`: Frame taken with one single fibre illuminated with an arc lamp, and all other fibres dark. Must be either upper or lower chip, therefore SPLIT/UVES must be used first.
- `out_cat`: Optional output product catalogue. Set the catalog to '+' in order to skip this option. Default is +.
- `line_table`: Reference arc lamp line table, used for line identification.
- `xy_mbox`: A two-value, comma-separated parameter indicating the X and Y sizes of the search box within which a physical-model line-position prediction is matched with the actual position on the formatcheck frame. Default: 40,40.
- `xy_trans`: A two-value, comma-separated parameter indicating respectively the X and Y translation values with respect to a standard configuration to be applied to the physical model solution to obtain a good match with the actual formatcheck frame. Proper parameter for each instrument setting can be found using the command MODOFF/FLAMES. See note above on how to easily get proper values of this parameter.
- `angle`: A three-value, comma-separated, parameter with angle offsets of the echelle, the cross disperser and the CCD in degrees. Default: 0,0,0.

Output: (same as PREDICT/UVES)

- main products:
  - `o $ll$ RED $c$ .tbl`: Table with detected order positions;  $lll$  is the central wavelength in nm (520/580/860);  $c$  is either 'U' (upper chip) or 'L' (lower chip)
  - `l $ll$ RED $c$ .tbl`: Table with detected line positions and identification;  $lll$  is the central wavelength in nm (520/580/860);  $c$  is either 'U' (upper chip) or 'L' (lower chip)
  - `b $ll$ RED $c$ .tbl`: Table with inter-order positions for background extraction;  $lll$  is the central wavelength in nm (520/580/860);  $c$  is either 'U' (upper chip) or 'L' (lower chip)
  - `drs_setup_RED $c$ .tbl`: DRS setup table;  $c$  is either 'U' (upper chip) or 'L' (lower chip)

Command description:

Based on the command PREDICT/UVES in the UVES context, it determines a guess order table and a line table from an arc lamp exposure obtained with a single fibre illuminated (format check exposure). This type of exposure enables a simultaneous order tracing as well as a calculation of the line positions (Th-Ar). These computations are based on a physical model of UVES. These physical model predictions are compared with the arc lamp exposure in order to optimize the order and line table solution. The line table should be used as a first guess solution in the wavelength calibration process. The order table gives an estimate of the order positions for the next commands. This step is successful when the the final "physical model plots" show a good aggregation, in particular the plot of XDIF (differences between model predictions and data points along dispersion direction) vs X (dispersion direction) and YDIF (differences between model predictions and data points along cross dispersion direction) vs Y. (cross dispersion direction). Please consult [1] for clarifications.

### 6.3.4 Single fibre order table generation: ORDERPOS/UVES

To get an order table from a simultaneous calibration (single) fibre flat field one can use the command ORDERP/UVES having as input the DRS table and guess order table the ones generated by PREDICT/FLAMES (or FMSTAB/FLAMES). This UVES context command has been upgraded to support FLAMES-UVES data reduction (see [1]).

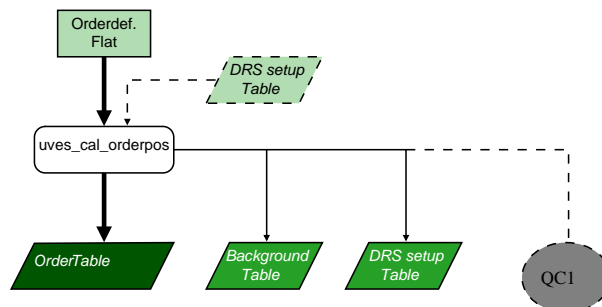


Figure 6.5: Data flow diagram for command ORDERPOS/UVES.

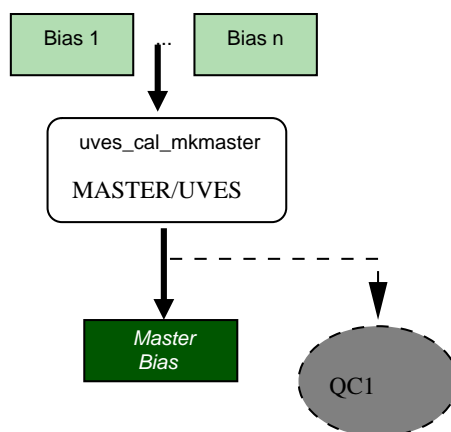


Figure 6.6: Data flow diagram for command MASTER/FLAMES (same as MASTER/UVES) in case of master bias generation.

### 6.3.5 Master bias generation

We refer the reader to the UVES context documentation for the command MASTER/UVES. In fact FLAMES data reduction uses that command (see [1]).

#### Master dark generation

We refer the user to the UVES context documentation for the command MASTER/UVES. In fact FLAMES data reduction uses that command (see [1]).

#### Master slit flat field generation

The purpose of this step is to create several master slit flat fields each corresponding to a given Y position. To do this one could divide the raw slit flat fields in groups each having the same Y position (having values of the FITS keyword ESO.INS.SLIT3.X1ENC and ESO.INS.SLIT3.X2ENC within 5 encoder steps) and next on each group apply the command MASTER/FLAMES, which has same syntax as the command MASTER/UVES. Otherwise one could put all the input data in a catalogue were each frame is identified by its file descriptor DO\_CLASSIFICATION, and next use it as input of the command MASFLAT/FLAMES, which has same syntax as the command MASTER/UVES. The command MASFLAT/FLAMES sorts the raw slit flat fields by Y position and to each group apply the command MASTER/FLAMES to produce as many master slit flat fields as are the different groups of slit flat fields.

MASTER/FLAMES is the same as MASTER/UVES except that no background subtraction is done (as the input slit flat fields are at different Y position). Background subtraction is done automatically later on in the data reduction.

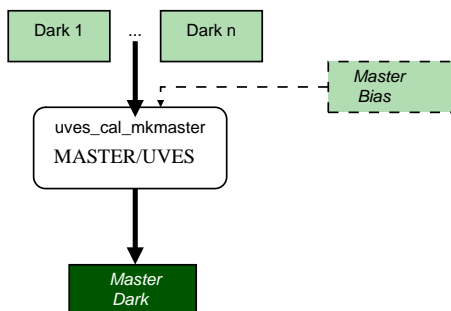


Figure 6.7: Data flow diagram for command MASTER/FLAMES (or MASTER/UVES) in case of master dark generation.

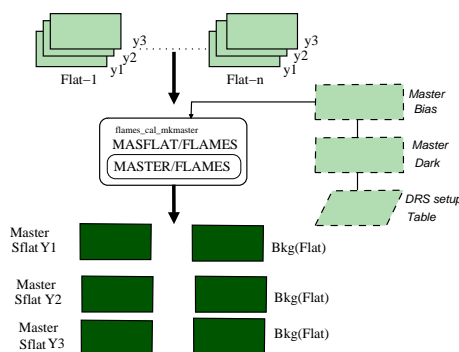


Figure 6.8: Data flow diagram for command MASFLAT/FLAMES in case of master slit flat field generation.

### 6.3.6 ORFSFF/FLAMES

Command Syntax: `ORFSFF/FLAMES in_cat out_cat ref_cat [method] [bias_val] [filter_sw] [saturation_threshold] [sff_fibff,drs_cubify]`

Input:

- `in_cat`: Input catalogue with splitted odd-even-all fibre flat fields.
- `out_cat`: Name of catalog with output product frames. It will contain frames with prefix “slitff” and “fibreff” (see below) and the fibre-order table. Set it to ‘+’ to skip it. Default is +.
- `ref_cat`: Name of reference catalogue containing splitted slit flat field raw frames, a guess order tables, master biases.
- `method`: Extraction method: “std” (standard) or “opt” (optimal), or fst (fast-standard) or fop (fast-optimal); or qst (quick-standard) or qop (quick-optimal). The default is set by MIDAS keyword `DRS_EXT_MTD` (“opt”).
- `bias_val`: Value used in bias subtraction. Possible values are:
  - M: uses a given master bias;
  - < num > : uses a given number;
  - N: No bias subtraction.

The default is set by MIDAS keyword `DRS_BIAS_MTD` (“M”).

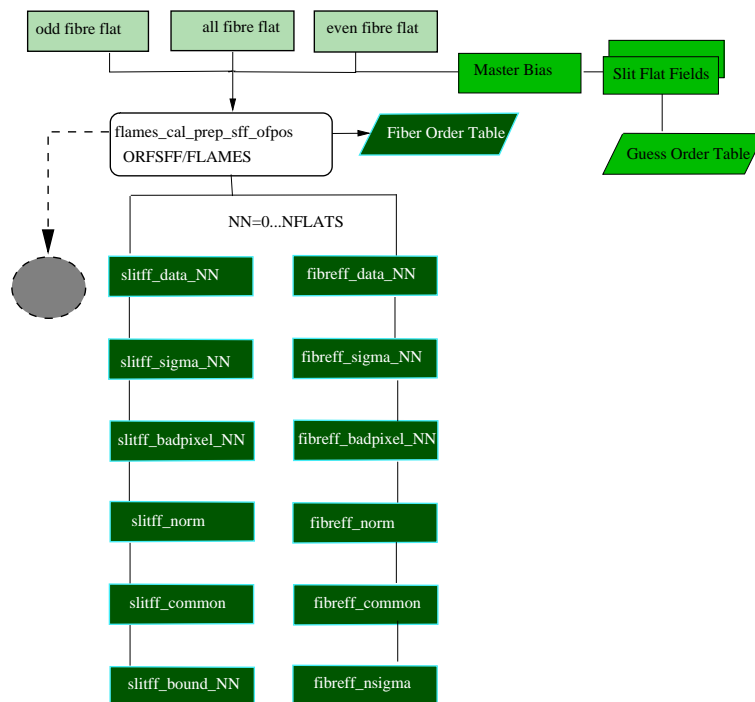


Figure 6.9: Illustration of the slit and fibre flat fields frame generation.

- `filter_sw`: Optional filter applied using PREPPA/FLAMES. Possible values are “none” (no filter is applied) and “median” (a median filter is applied). The default is set by MIDAS keyword `DRS_FILT_SW` (“none”). See also PREPPA/FLAMES.
- `saturation_threshold`: Optional saturation threshold used to detect saturated pixels before applying the command PREPPA/FLAMES. The value is corrected in case of bias subtraction with the given number or in case of master bias subtraction with the median of the master bias. The default is set by MIDAS keyword `DRS_PTHRE_MAX` (55000).
- `sff_fibff, drs_cubify`: `sff_fibff`: `slitff*` and `fibreff*` frames generation ? The default is set by MIDAS keyword `DRS_SFF_FIBFF` (“Y”). If N the computation time drops significantly. It can be a valid option for PSO in case of performance limitations. `drs_cubify`: generation of `slitff*` and `fibreff*` as cubes. The default is set by MIDAS keyword `DRS_CUBIFY` (“N”). This last option has been asked from DFO to reduce the number of calibration files produced and hence streamline their automatic handling. We suggest the user to keep the defaults as set.

Output: See also output of commands PREPSLIT/FLAMES, PREPPA/FLAMES, OFPOS/FLAMES, PRE-BKG/FLAMES, PREPFIBRE/FLAMES, PRENORM/FLAMES.

- `out_slit_cat`: Output slit flat-field frames catalog.
- `slitff_data0x.bdf`: Normalized, combined slit flat-field frame(s);  $x = 1$  or  $2$  (2 half slits cover all fibre positions).
- `slitff_sigma0x.bdf`: Variance on combined slit flat-field frame(s).
- `slitff_badpixel0x.bdf`: Bad-pixel mask for combined slit flat-field frame(s).
- `slitff_bound0x.bdf`: Bounds for combined slit flat-field frame(s).
- `slitff_norm.bdf`: Normalization data for combined slit flat-field frame(s).

- `slitff_common.bdf`: Common data for combined slit flat-field frame(s).
- `fibreff_data0x.bdf`: Normalized, cleaned fibre flat-field frames;  $x = 1$  for odd-fibre flat-field,  $x = 2$  for even-fibre flat-field.
- `fibreff_sigma0x.bdf`: Variance on fibre flat-field frames.
- `fibreff_badpixel0x.bdf`: Bad-pixel mask for fibre flat-field frames.
- `fibreff_norm.bdf`: Normalization data for fibre flat-field frames.
- `fibreff_nsigma.bdf`: Normalization sigmas for fibre flat-field frames.
- `fibreff_common.bdf`: Common data for fibre flat-field frames.

#### Command description:

Prepares slit flat-field and fibre flat-field frames for inclusion in the calibration database. The command reduces first the lower-chip data and next the upper-chip data. The slit FF frames are normalised to be equal where they overlap, then a minimal set of frames covering the largest  $y$  interval is produced and the latter are added to the newly created catalog `out_cat` with the proper classification.

This command runs in sequence BPIMA/FLAMES (to create suitable bad-pixel masks), PREPPA/FLAMES (to associate variance and bad-pixel frames to existing frames), OFPOS/FLAMES (to locate all fibre and order positions), PREBKG/FLAMES (to locate suitable position for background-light extraction), PREP-SLIT/FLAMES (to prepare input slit flat-fields), PREPFIBRE/FLAMES (to prepare input fibre flat-fields), PRENORM/FLAMES (to compute fibre-to-fibre normalizations). Last, classifies all output products. To improve robustness (of this command and WAVECAL/FLAMES, REDUCE/FLAMES commands) this step checks that for each detected order all the fibres are traced and if not a fibre tracing is forced. Moreover the command OFPOS/FLAMES, to prevent problems in the wavelength calibrations, excludes from the order tracing the bottom right and upper left hand side corners. This is done setting appropriate values of keywords `DRS_SCAN_MIN` and `DRS_SCAN_MAX`, and using an appropriate value for the first component of parameter `P8` in OFPOS/FLAMES (used internally in the command `hough/echelle`) through parameter `DRS_P8_OFPOS_S1`. Such values are wavelength dependent.

### 6.3.7 WAVECAL/FLAMES

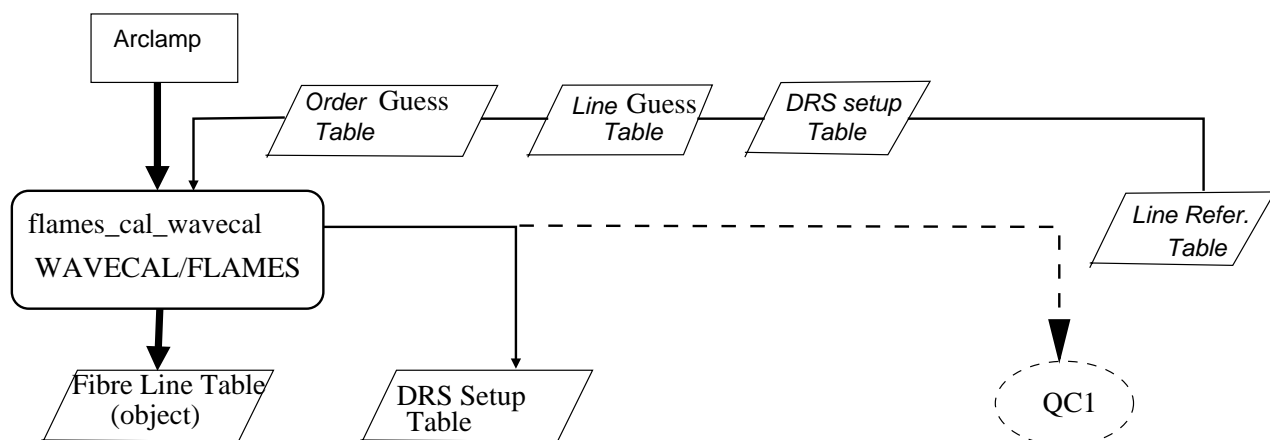


Figure 6.10: Illustration of the wavelength calibration solution generation.

Command Syntax: `WAVECAL/FLAMES in_cat out_cat ref_cat [mode] [resol] [fits] [precision]`

**Input:**

- `in_cat`: Input catalogue with splitted frame(s).
- `out_cat`: Optional output products catalogue. Default '+'.
- `ref_cat`: Optional reference catalogue containing a DRS setup table and a guess line table (output of PREDICT/FLAMES or FMTSTAB/FLAMES), and the fibre-order table (output of ORFSLT/FLAMES). Default '+'.
- `mode`: Mode how to perform the calibration. Optional. Default is 'Auto'.
  - Auto: the calibration will be done in guess mode, i.e. WLCMTD=GUESS will be used in the command IDENTI/ECHELLE of the ECHELLE context.
  - Interactive: the calibration will be done interactively. WLCMTD is set to PAIR for the call to IDENTI/ECHELLE.
- `resol`: Optional switch to produce spectral resolution plots. Set it to 'Y' to create spectral resolution plots. Default: 'Y'.
- `fits`: FITS output files ? Set it to 'Y' to create FITS output files, having appropriate FITS headers, which may be ingested into the calibration database. This make sense only outside the pipeline environment (which anyway as such has final product in FITS format) Optional. Default: 'N'.
- `precision`: Parameter to set precision of solution. Defaults are set by the MIDAS keywords DRS\_WCAL\_DC and DRS\_WCAL\_TOL (4,0.6). DRS\_WCAL\_DC sets the order of the wavelength solution. A value of 4 demonstrates as more robust than 5, which lead to a more precise solution. DRS\_WCAL\_TOL set a threshold in pixel units. Line identifications which are distant from the found solution more than TOL are considered as outliers. TOL should be less than 1. Small values of TOL may lead to higher precision, but also to less identifications. Is suggested to adopt a value such that at least 7-10 lines per order (and a given fibre) are found.

Output: see output of WAVECAL/UVES. It produces 2 tables `lin{wc}x.tbl`, where `wc` is the central wavelength (in nm, 3 significant figures) setting, and `x = L` (lower chip) or `U` (upper chip).

**Command description:**

Built as a modification of the command WAVECAL/UVES, extracts the echelle orders by means of the order table created using ORFSFF/FLAMES and determines the dispersion relation for each order using IDENTI/ECHELLE. The line identification will be done using as a first guess solution a previously created line table either from a physical model (PREDICT/FLAMES) or through an interactive run (P4=I) where you have to identify 2 pairs of lines. Successful calibration solutions can be verified looking at the residual plots (see [1] the description of the command WAVECAL/UVES, for clarifications. In particular chapter 3 of [1] provides also a high level description with an examples of "residuals" and "resolution" plots). Good resolution plots have typically residuals of the order of 0.01 or better Angstrom.

**6.3.8 REDUCE/FLAMES**

Command Syntax: `REDUCE/FLAMES in_science_cat out_science_cat ref_cat [extract] [bias_val] [filter_sw] [saturation_threshold] [drs_sci_cubify,drs_cubify]`

**Input:**

- `in_science_cat`: Catalog of input science frames (after SPLIT/UVES).

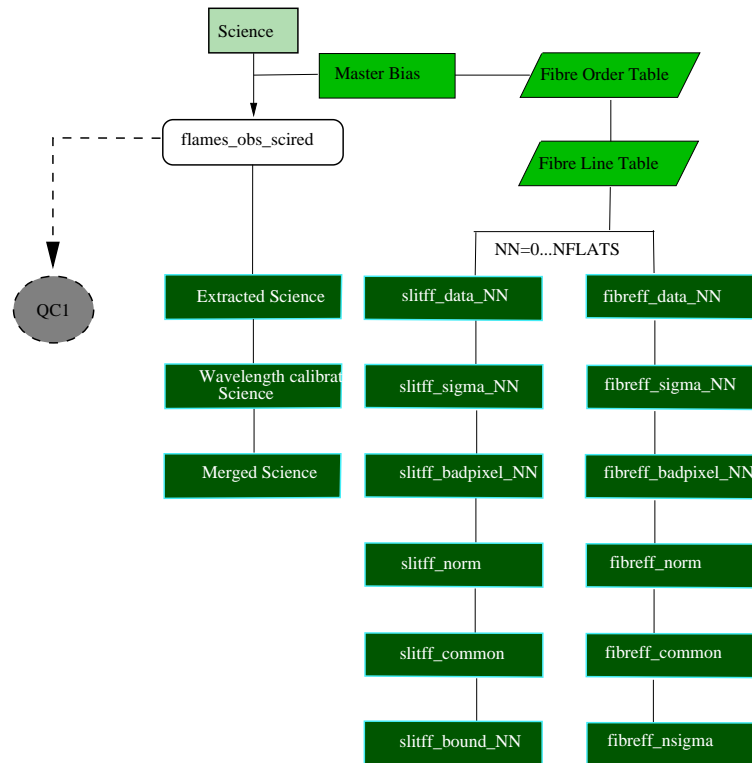


Figure 6.11: Illustration of the science reduction data flow.

- `out_science_cat`: Catalog of output science frames.
- `ref_cat`: Catalog of reference frames (slit flat-fields, fibre flat-fields, fibre/order table, background table) created by ORFSFF/FLAMES.
- `extract`: This is a composed parameter: `method,drs_cor_fnd_max,drs_def_cor_rng,drs_def_cor_pnt,drs_def_cor_off`.
  - `extract`: Extraction method, either ‘std’ (for standard extraction), or ‘opt’ (for optimal extraction) or `fst` (for “fast” standard extraction) or “fop” (for “fast” optimal extraction). The default is set by MIDAS keyword `DRS_EXT_MTD` (‘opt’).
  - `drs_cor_max_fnd`: definition of cross correlation shape. The default is set by keyword `DRS_COR_MAX_FND` (“Y”).
  - `drs_cor_def_rng`: set range of definition of correlation shape: `[-drs_cor_def_rng,+drs_cor_def_rng]`. The default is set by keyword `DRS_EXT_DEF_RNG` (6).
  - `drs_cor_def_pnt`: set number of definition point for correlation shape: (Number of points:  $2 * \text{drs\_cor\_def\_pnt} + 1$ ). The default is set by MIDAS keyword `DRS_COR_DEF_PNT` (25).
  - `drs_cor_def_off`: set measured offset for the correlation shape: The default is set by MIDAS keyword `DRS_COR_DEF_OFF` (0).
- `bias_val`: Value used in bias subtraction. Possible values are:
  - M: uses a given master bias;
  - `< num >`: uses a given number;
  - N: No bias subtraction.

Defaults is `DRS_BIAS_MTD` (“M”).

- `filter_sw`: Optional filter applied using PREPPA/FLAMES. Possible values are 'none' (no filter is applied) and 'median' (a median filter is applied). See also PREPPA/FLAMES. Default is `DRS_FILT_SW` ('none').
- `saturation_threshold`: Optional saturation threshold used to detect saturated pixels before applying the command PREPPA/FLAMES. The value is corrected in case of bias subtraction with the given number or in case of master bias subtraction with the median of the master bias. Default is `DRS_PTHRE_MAX` (55000).
- `drs_sci_cubify, drs_cubify`:  
`drs_sci_cubify`: To have science products packed in planes or cubes. The default is set by the MIDAS keyword `DRS_SCI_CUBIFY` (N). DFO set this to Y to limitate the number of pipeline products for the science step.  
`drs_cubify`: To be able to use input `slitff*` and `fibreff*` as cubes? Default is set by MIDAS keyword `DRS_CUBIFY` ("N"). Also this may be set (by DFO) to Y to simplify operations. To the normal user we suggest to keep the defaults (N,N).

#### Output:

- extracted, flat-fielded, bias- and background-corrected frames `fxb*`. Classified as `XB_SCI_x`, `x=REDL` or `REDU`.
- rebinned, extracted, flat-fielded, bias- and background-corrected frames `wfxb*`. Classified as `WXB_SCI_x`.
- merged, rebinned, extracted, flat-fielded, bias- and background-corrected frames `mwxb*`. Classified as `MWXB_SCI_x`.

#### Command description:

This command performs the actual spectrum extraction, either optimal or standard. The normalized odd/even fibre flat-field frames output of previous commands are compared to the science frame, any y-axis shift between them is computed and compensated by shifting the odd/even fibre flat-fields; an optimal/standard extraction is performed on the science frame, and the resulting spectra are created, one set of files for each illuminated fibre. See also `EXTRACT/FLAMES`. Next, using the line table created by `WAVECAL/FLAMES`, the extracted spectra are rebinned and merged. Finally, the products are classified. This commands supports different extraction modes. The normal extraction mode (the one just described, using optimal or standard extraction, setting the parameter `extract` equal to "opt" or "sta") is the one we suggest to the user. Fast extraction mode (`extract` equal to "fop" or "fst") is faster as skip the correlation step (but as such it may have also lower quality). Quick extraction mode, which does not use at all the slit flat fields in the data reduction chain, and does not do any correlation step, was implemented in answer to a Paranal Operation request, and if used, requires that the complete data reduction (commands `ORFSFF/FLAMES` or `PREPFIBRE/FLAMES` and `PRENORM/FLAMES`) is performed in a coherent way (using quick data reduction mode).

In case the correlation step fails (usually due to a large Y shift between the observation and the calibrations) we suggest the user to do the following. The shape of the correlation function is contained in tables `cor_shape_x.tbl` (`x=l` or `x=u` respectively for EEV or MIT chips). Give commands:

```
PLOT/TABL cor_shape_l.tbl (to plot the correlation function profile)
GET/GCUR (to get its maximum position)
```

Next repeat the extraction appropriately setting the correlation function parameters (through parameter `extract`). In this case usually `drs_cor_def_rng` can be decreased to 2 or even 1.

For example to do optimal extraction with correlation (OPT) function search (Y) in the range [-2,2], using  $2*25+1$  pixels and having measured a -4.5 pixel shift, one may give the command:

```
REDUCE/FLAMES in.cat out.cat ref.cat OPT,Y,2,25,-4.5
```

If the user is running the extraction executing reduction blocks (e.g. EXEC/RB sci.rb), after having got the correlation function values, add in the end of the RB, in our case, (we use in the example dummy names and indicate only a few dummy calibrations):

```
recipe: flames_obs_scired
```

```
instrument: uves
```

```
/path_to_product_dir/SV/r.my_sci
```

```
{  
/path_to_raw_science/my_sci.fits FIB_SCI_COM_RED
```

```
}
```

```
{
```

```
/path_to_calibrations/my_calib1.fits
```

```
/path_to_calibrations/my_calibN.fits
```

```
/path_to_calibrations/my_calib1.tfits
```

```
/path_to_calibrations/my_calibN.tfits
```

```
}
```

```
OPT,Y,2,25,-4.5
```



### 6.4.1 PREPPA/FLAMES

Command Syntax: PREPPA/FLAMES frame\_cat [bad\_pix\_mask] [filter\_switch]  
 [x\_width,y\_width] [n\_iterations] [kappa\_sigma\_thres]  
 [apply\_cuts\_switch] [low\_cut,high\_cut]

Input:

- `frame_cat`: Either a single frame or a catalog of frames (in all cases after SPLIT/UVES).
- `bad_pix_mask`: Optional initial bad-pixel mask, relative to the input frames. Set it to '+' to disable it. Default is +.
- `filter_switch`: 'MEDIAN' or 'NONE', toggles use of a median filter to derive a bad-pixel mask (the default is set by MIDAS keyword DRS\_FILT\_MASK to 'NONE'). Optional.
- `x_width,y_width`: If `filter_switch` was set to 'MEDIAN', width in x and y of the median window to be used (the default is set by MIDAS keyword DRS\_FILT\_HW\_XY to : 2,1).
- `n_iterations`: Maximum number of median filtering iterations (the default is set by MIDAS keyword DRS\_FILT\_IMAX to 300).
- `kappa_sigma_thres`: Difference (sigmas) between the input frame and its median filtered frame above which a pixel is marked as bad in the mask (the default is set by MIDAS keyword DRS\_FILT\_KS to 10).
- `apply_cuts_switch`: Should use cuts to mark saturated and cold pixels as bad in the mask (YES/NO). The default is set by MIDAS keyword DRS\_FILT\_SAT\_SW to YES.
- `low_cut,high_cut`: Cuts to be used in the cuts filter (default is set by keywords DRS\_PTHRE\_MIN,DRS\_PTHRE\_MAX: -20,55000).

Output:

- for each frame in `frame_cat`: Two more frames: an error frame (`*_sigma.bdf`), and a bad-pixel frame (`*_mask.bdf`).

Command description:

This command prepares frames read from disk for usage by the DRS commands. Its input may be a single frame or a catalog of frames. For each indicated frame, two new frames are created, a variance frame and a bad-pixel mask frame, with suffixes `_sigma.bdf` and `_mask.bdf`. Their names are written into the descriptors SIGMAFRAME and BADPXFRAME of the input frame. It must be used before any other command that uses raw (or calibration database) frames, except for the format-check frame, the wavelength calibration frame and the order-definition frame (unless this last is used altogether with the odd and even fibre flat fields as input of PREPFIBRE/FLAMES).

If the BADPXFRAME keyword is defined, it is assumed to contain the name of a generic bad-pixel frame to be used as a first guess (i. e. known detector blemishes). If an input frame contains a BADPXFRAME descriptor, this is assumed to contain the name of a first guess bad-pixel frame to be used for that specific frame. If both the MIDAS keyword BADPXFRAME and the descriptor BADPXFRAME are defined, the corresponding bad-pixel frames are merged.

Moreover, two additional methods to detect and flag bad pixels are provided: recursive median filtering and clipping of values out of a given validity interval.

If recursive median filtering is enabled setting the parameter `filter_switch` to `median`, for each pixel the median of the good pixels in a neighbourhood defined by the `x_width` and `y_width` parameters is computed and if the

pixel value differs by more than `kappa_sigma_thres` times the computed sigma, the pixel is flagged as bad. This procedure is iterated until no new bad pixels are detected. While this procedure is very effective at pinpointing bad pixels, it is also computationally intensive, and thus very time consuming. For this reason it is disabled by default.

If the `apply_cuts_switch` is set to YES, each pixel is compared with the validity interval provided by the `low_cut` and `high_cut` parameters and any pixels outside this interval are flagged as bad. This is meant to quickly catch saturated pixels and/or bad values due to electronics. The cuts must be chosen keeping in mind whether the input frame was already bias-subtracted or not, and leave enough allowance for normal noise, in order not to cause a spurious mass rejection of pixels.

The final bad pixel mask will thus be the merged set of all bad pixels detected by any means, or previously marked as such in a user-defined bad pixel frame whose name(s) was (were) set in the `BADPXFRAME` keyword and/or descriptor.

### 6.4.2 BPIMA/FLAMES

Command Syntax: `BPIMA/FLAMES template_ima [out_bad_pix_ima] [saturation_threshold]`

Input:

- `template_ima`: Template image
- `out_bad_pix_ima`: Output bad-pixel image name (default 'bp.bdf').
- `saturation_threshold`: Threshold used to detect saturated pixels. The default is set by keyword `DRS_PTHRE_MAX` (55000).

Output:

- main products:
  - `bad_pix_ima`: Output bad-pixel image with the specified name, filled with 1/0 (good/bad pixels, respectively).

Command description:

The location of the traps and dead columns on the CCD chip are mapped according to the instrument setting (wave, bin, CCD chip), as determined by examining the template image given. In addition, all pixels above the given saturation threshold are marked as bad. With this information a bad-pixel image is created, that will be used in the following data reduction to mask appropriately the bad pixels.

Note: To actually make use of the bad-pixel image created by this command, one should set either the `BADPXFRAME` keyword (to use it as a global default) or the `BADPXFRAME` descriptor (on a frame by frame basis) to its name, or supply its name as a command line argument to the `PREPPA/FLAMES` command. See also the documentation of the `PREPPA/FLAMES` command.

### 6.4.3 OFPOS/FLAMES

Command Syntax: `OFPOS/FLAMES [guess_order_table],[output_order_pos_table],[in_fibre_cat],[max_extend] [nb_traces] [widthi] [hough_trans_switches] [thresi] [x_degree,ord_degree] [hot_thres,step] [cluster,slope_min,slope_max,step_slope,step_orig]`

Input:

- `guess_order_table`: Table with first-guess order positions, e.g. `o $lll$ RED $c$ .tbl` output from PREDICT/FLAMES;  $lll$  is the central wavelength in nm (520/580/860);  $c$  is either 'U' (upper chip) or 'L' (lower chip). If this is not provided, it defaults to "order.tbl".
- `output_order_pos_table`: Table with central column position coordinates (default `outtab.tbl`).
- `in_fibre_cat`: Input catalog, listing odd- and even-fibre flat-field frames, for either upper or lower chip (use SPLIT/UVES in advance). It defaults to "flat.cat".
- `max_extend`: number of additional orders to look for, beyond those in the `guess_order_table` (default: 3)
- `nb_traces`: number of traces to look for in each frame, see P2 in DEFINE/HOUGH (default: NBTRACES keyword)
- `widthi`: see P3 of DEFINE/HOUGH (default: WIDTHI keyword)
- `hough_trans_switches`: see P4 of DEFINE/HOUGH (default: DENSE)
- `thresi`: see P5 of DEFINE/HOUGH (default: THRESI keyword)
- `x_degree, ord_degree`: degrees of the bivariate polynomial to be fitted to the order centres, see P6 of DEFINE/HOUGH (default: DEFPOL keyword)
- `hot_thres, step`: see P7 of DEFINE/HOUGH (default: 100000,10)
- `cluster, slope_min, slope_max, step_slope, step_orig`: see P8 of HOUGH/ECHELLE This parameter always use default: DRS\_P8\_OFPOS\_S1,-.1,.1,.005,1). It may be partially modified changing the cluster subparameter (DRS\_P8\_OFPOS\_S1) which has default values 0.05,0.10,0.10 respectively for 520,580,860 settings.

#### Output:

- main products:
  - frames in `in_fibre_cat`: Same frames as input, shifted.
  - `output_order_pos_table`: Table with detected fibre/order position coefficients
- other products:
  - `tracing_orders.tbl`: Auxiliary table with selected order positions
  - `function.tbl`: Auxiliary table
  - `graph_wnd $xxx$ .plt`: Graphical file (MIDAS);  $xxx$  is a number
  - `middummh.bdf`: Temporary frame (Hough Transform image)
  - `middummt.bdf`: Temporary frame (Hough Transform image)
  - `middummi.bdf`: Temporary frame
  - `middummr.tbl`: Temporary order Table

#### Command description:

This command finds all "traces" in a set of fibre flat-field frames, in which lit fibres do not overlap, typically an even and an odd fibres frame. The `nb_traces` parameter, if set, forces the software to detect exactly this number of traces.

The traces are found using the Hough transform technique, internally running the low level HOUGH/EHELLE command with appropriate parameters. To improve robustness of the wavelength calibration and the extraction in different settings we have set values of SCAN keyword (see help of hough/echelle) with the MIDAS keywords DRS\_SCAN\_MIN (set to 55,73,73) and DRS\_SCAN\_MAX (set to 1993,1975,1975) to prevent the case in which it could be detected very small portion of fibres in the two corners in the bottom right hand side or in the top right hand side of the detector.

While sensible defaults are provided for them, some of the above parameters can be given on the command line and are passed along unchanged, but it is strongly advised to avoid changing them if their meaning is not clear to the user (i. e. read the documentation for the HOUGH/EHELLE MIDAS command *before* doing any change of defaults for parameter P8).

These traces are then correlated with the order positions from the first guess order table, and labelled according to order and fibre number as deduced from the FIBREMASK keyword in the fibre flat field frames.

The orders are then fitted with a polynomial of degrees as defined in the DEFPOL keyword, assuming constant relative positions of the fibres. The polynomial coefficients are stored in the COEFFD descriptor of the output order-fibre table, while the relative position of the fibres are stored in the FIBREPOS descriptor of the same table.

#### 6.4.4 PREBKG/FLAMES

Command Syntax: PREBKG/FLAMES order\_table back\_table [n\_windows]  
[x\_width\_max,y\_width\_max]

Input:

- order\_table: Table with best-guess order positions, created e. g. by OFPOS/FLAMES.
- back\_table: Name of the background position table to be created.
- n\_windows: Optional number of windows in each inter-order space. The default is set by keyword BKG\_MAX\_IO\_WIND (500).
- x\_width\_max,y\_width\_max: Optional maximum x,y widths of each window. Defaults are set by keyword BKG\_XY\_WIN\_SZ (6 pixels in x, and 2 pixels in y).

Output:

- back\_table: Background position table, for computation of scattered-light background.

Command description:

This command takes as input the order table (e.g. the table raworder.tbl created by PREDICT/FLAMES) to create a table of positions where the scattered-light background may be computed, in regions not illuminated by any fibre.

The user is advised to recreate the background table using the order-fibre table from the PRENORM/FLAMES command before starting optimal (standard) extraction. In general, when a background table and an order-fibre table are required for a DRS command, it is considered good practice to freshly create the background table using the same order-fibre table to be subsequently used.

Subtracting a poor background may easily make a disaster in subsequent data reduction steps, affecting the quality of the extracted spectra and the DRS robustness. Therefore, in highly pathological cases, such as strongly saturated, bright emission lines bleeding in large parts of a frame, it is recommended to run the SELECT/BACK command on the background table and to make sure that only *bona fide* background regions are left selected, before actually using it.

See also the BKFIT/FLAMES command for a standalone background fit on a frame.

### 6.4.5 MSFFSZ/FLAMES

Command Syntax: MSFFSZ/FLAMES slit\_ff\_frame order\_table

Input:

- slit\_ff\_frame: Input slit flat-field frame.
- order\_table: Order(-fibre) table, from PREDICT/FLAMES or from ORFSFF/FLAMES.

Output:

- main products:
  - Input slit\_ff\_frame with added keywords YSHIFT and HALFWIDTH

Command description:

Finds the FWHM across  $y$  of the illuminated part of a slit flat-field frame near frame center, finds the offset ( $y$  shift) of the order centres in this frame with respect to order positions as traced by the order table, and writes these data as keywords YSHIFT and HALFWIDTH of the input slit flat-field frame. This command has to be used before using PREPSLIT/FLAMES.

Note: the automatically determined HALFWIDTH is rather conservative for reasons of robustness, it may be slightly underestimated This command has been made more robust in release 2.1.0.

### 6.4.6 PREPSLIT/FLAMES

Command Syntax: PREPSLIT/FLAMES in\_slit\_cat order\_table out\_slit\_cat out\_slit\_name

Input:

- in\_slit\_cat: Input slit flat-field frames catalog. The frames must have been processed with SPLIT/UVES and PREPPA/FLAMES.
- order\_table: Table with order/fibre positions, as created by e. g. OFPOS/FLAMES.
- out\_slit\_cat: Name of output slit flat-field frames catalog.
- out\_slit\_name: Base name for output slit flat-field frames.

Output:

- main products:
  - out\_slit\_cat: Output slit flat-field frames catalog.
  - out\_slit\_name\_data0x.bdf: Normalized, combined slit flat-field frame(s);  $x$  is a number, usually not larger than 2 (2 half slits should cover all fibre positions).
  - out\_slit\_name\_sigma0x.bdf: Variance on combined slit flat-field frame(s).
  - out\_slit\_name\_badpixel0x.bdf: Bad-pixel mask for combined slit flat-field frame(s).
  - out\_slit\_name\_bound0x.bdf: Bounds for combined slit flat-field frame(s).

- `out_slit_name_norm.bdf`: Normalization data for combined slit flat-field frame(s).
- `out_slit_name_common.bdf`: Common data for combined slit flat-field frame(s).
- other products:

Command description:

This command takes a catalog of calibration slit flat-field frames (at least 2 frames), ordered by Y shift and rescaled in intensity so that each frame intensity is the same as the one of the previous adjacent one where the two overlap, and creates a new, minimal set of slit flat-field frames plus other auxiliary frames (normalization, boundary data) used by subsequent DRS commands. On each input slit flat field frame, the `HALFWIDTH` and `YSHIFT` descriptors should be set, defining respectively the half width of the flat part of the orders and the offset between the order centres in this frame and the order centres as traced by the order-fibre table. See the `MSFFSZ/FLAMES` command to automatically set them, or set them by hand, if preferred.

Of course, for relative equalisation to be possible, each frame *must* have some overlap with the neighbouring ones in the set.

### 6.4.7 PREPFIBRE/FLAMES

Command Syntax: `PREPFIBRE/FLAMES in_fibre_cat,(in_slit_cat) back_table raw_order_table [threshold] out_fibre_cat out_fibre_name method`

Input:

- `in_fibre_cat`: Input fibre flat-field frames catalog. The frames are those created by `OFPOS/FLAMES`.
- `slit_cat`: Input slit flat-field frames catalog. The frames are those created by `PREPSLIT/FLAMES`. This is necessary only if `method` is one of `opt`, `sta`, `fop`, `fst` (as usually suggested to correct for eventual fibre shifts).
- `back_table`: Background position table, created by `PREBKG/FLAMES`.
- `order_table`: Table with detected order positions, created by `OFPOS/FLAMES`.
- `threshold`: k-sigma threshold for bad pixel rejection. Default is set by keyword `DRS_S_THRE` (10 sigmas).
- `out_fibre_cat`: Name of output fibre flat-field frames catalog.
- `out_fibre_name`: Base name for output fibre flat-field frames.
- `method`: extraction method. If extraction method is `qop` or `qst`, “quick” extraction is performed and slit flat fields are not used. The default is set by `MIDAS` keyword `DRS_EXT_MTD` to `opt`.

Output:

- main products:
  - `out_fibre_cat`: Output fibre flat-field frames catalog.
  - `out_fibre_name_data0x.bdf`: Normalized, cleaned fibre flat-field frames;  $x = 1$  for odd-fibre flat-field,  $x = 2$  for even-fibre flat-field.
  - `out_fibre_name_sigma0x.bdf`: Variance on fibre flat-field frames.
  - `out_fibre_name_badpixel0x.bdf`: Bad-pixel mask for fibre flat-field frames.

- `out_fibre_name_norm.bdf`: Normalization data for fibre flat-field frames.
- `out_fibre_name_nsigma.bdf`: Variances of the normalization data for fibre flat-field frames.
- `out_fibre_name_common.bdf`: Common data for fibre flat-field frames.
- other products:
  - `order.tbl`: Modified table with detected order positions.
  - `middumma.tbl`: Temporary table with correlation function results.

#### Command description:

Takes as input the same odd/even fibre flat-field frames which were used for order-fibre detection in OFPOS/FLAMES, normalizes them (each fibre is normalised to 1 integrated flux at each  $x$  position), and selects only fibres falling within the region illuminated in the slit flat-field frames, to create a new set of odd/even fibre flat-field frames plus other auxiliary frames (normalization, fibre boundaries) used by subsequent DRS commands. Any bad pixels in the input fibre flat-fields are filled with interpolated values, if possible. Each fibre is then correlated with a Gaussian centred at the position traced by the order-fibre table, with a variable offset.

The variable  $y$  offset is allowed to span the interval between `-MAXYSHIFT` and `+MAXYSHIFT`.

The half width at half maximum of the Gaussian pseudo-fibres is read from the `GAUSSFIBRESIGMA` keyword, and their total half width is read from the `GAUSSHALFWIDTH` keyword.

The offset corresponding to the maximum correlation is saved in descriptors, to be used as a “zero-point” correction for fibre asymmetry when measuring actual fibre offsets on other frames. For this correction to be effective, subsequent correlations are forced to use the same Gaussian parameters (i. e. `GAUSSFIBRESIGMA` and `GAUSSHALFWIDTH`) which were used here.

### 6.4.8 PRENORM/FLAMES

Command Syntax: `PRENORM/FLAMES all_fibre_ff_frame fibre_ff_cat,(slit_ff_cat) back_table,in_order_table out_order_table [threshold] [method] [max_shift]/[window_size]`

#### Input:

- `all_fibre_ff_frame`: Input all-fibre flat-field frame, processed by `SPLIT/UVES` and `PREPPA/FLAMES`.
- `fibre_ff_cat`: Odd/even normalised fibre flat-field frame catalog. The frames which have been created by `PREPFIBRE/FLAMES`.
- `slit_ff_cat`: Equalised slit flat-field frame catalog. The frames which have been created by `PREPSLIT/FLAMES`. This input is necessary only if extraction method is `opt`, `sta`, `fop` or `fst`.
- `back_table`: Background position table, created by `PREBKG/FLAMES`.
- `in_order_table`: Table with detected order positions, as created by `OFPOS/FLAMES` and updated by `PREPFIBRE/FLAMES`.
- `out_order_table`: Name of output fibre/order table.
- `threshold`:  $k$ -sigma threshold for bad-pixel rejection. Default is set by MIDAS keyword `DRS_KSIGMA_THRE` to 10 (sigmas).
- `method`: extraction method. Optimal (`opt`), Standard (`sta`), fast-optimal (`fop`), fast-standard (`fst`), quick-optimal (`qop`) or quick-standard (`qst`). Default is set by MIDAS keyword `DRS_EXT_MTD` to `opt`.

- `max_shift/window_size`: In case of optimal extraction, one can specify the maximum  $y$  shift (world coordinates) to be searched between science and flat-field frames. Default value is set by MIDAS keyword `MAXYSHIFT`. In case of standard extraction one can specify the extraction window size. This parameter has default set by MIDAS keyword `DRS_EXT_W_SIZ`.

#### Output:

- main products:
  - `out_order_table`: Output fibre/order table.
  - `out_fibre_name_norm.bdf`: Modified normalization data for fibre flat-field frames.
  - `out_fibre_name_nsigma.bdf`: Modified normalization sigmas for fibre flat-field frames.
  - `out_fibre_name_common.bdf`: Modified common data for fibre flat-field frames.
  - `middumma.tbl`: Temporary table with correlation function results.
  - `middumma.bdf`: Estimated background frame.
  - `middummb.bdf`: Fitted frame with optimal extraction.
  - `middummc.bdf`: Sigma frame recalculated with optimal extraction.
  - `middummd.bdf`: Mask frame with pixels used in the extraction.

#### Command description:

This command performs an optimal or standard (according to the value chosen for the parameter `P6=method`) spectrum extraction on the all-fibre flat-field frame.

- First, if the `BKGFITINLINE` keyword is set to “yes” (as it is by default), a polynomial background is fitted to the positions in the `back_table`, and subtracted from the `all_fibre_ff_frame`. For more details about how this is done and which keywords control it, see the documentation about the standalone level 3 command `BKFIT/FLAMES`. Setting `BKGFITINLINE` to “no” disables inline background fitting and subtraction.
- Then the  $y$ -axis shift of the orders/fibres in the `all_fibre_ff_frame` is found by correlating the frame with a synthetic one composed of Gaussian-shaped pseudo-fibres centred on the positions traced by the order-fibre table, with a variable offset in the direction perpendicular to dispersion. The maximum of said correlation is found, and the corresponding offset is corrected for the “zero-point” shift measured at the `PREPFIBRE/FLAMES` stage. For more details about how this is done and which keywords control it, see the documentation about the standalone level 3 command `FNDRYSHIFT/FLAMES`. This  $y$  offsets are saved as a descriptor called `YSHIFT` in the science frame. The correlation step can be disabled by setting the `max_shift` parameter to zero or, equivalently, setting to zero the `MAXYSHIFT` keyword and leaving the `max_shift` parameter blank. In this case, the values already contained in the `YSHIFT` descriptor are used.
- The normalised fibre flat-field frames are then shifted to bring them to coincidence with the above offset and are multiplied by the slit flat-field frames to approximate fibre flat-field frames exactly matching the all-fibre flat-field frame. These frames are used to perform an optimal or standard extraction on the science frame, including a deconvolution of adjacent fibres (the deconvolution coefficients are computed directly from the odd/even fibre flat-fields).
- The extracted “spectra” are saved to be later used as relative normalisation factors between fibres in the subsequent extraction of science frames.

## 6.4.9 EXTRACT/FLAMES

Command Syntax: `EXTRACT/FLAMES science_frame fibre_ff_cat,(slit_ff_cat) back_table,order_table [out_spectra] [threshold] [method] [max_shift]/[window_size] [correl_pars]`

Input:

- `science_frame`: Input science frame to extract (after SPLIT/UVES and PREPPA/FLAMES).
- `fibre_ff_cat`: Normalised odd/even fibre flat-fields catalog (frames and catalog created by PREP-FIBRE/FLAMES).
- `slit_ff_cat`: Equalised slit flat-fields catalog (frames and catalog created by PREPSLIT/FLAMES). This need only if extraction is `opt`, `sta`, `fop`, `fst`.
- `back_table`: Background position table, created by PREBKG/FLAMES.
- `order_table`: Table with fibre/order position coefficients, created by PRENORM/FLAMES (preferred) or OFPOS/FLAMES.
- `out_spectra`: Base-name for output extracted spectra. Default is "science".
- `threshold`: k-sigma threshold for bad pixel rejection. The default is set by keyword `DRS_K_S_THRE` (10) sigmas.
- `method`: extraction method. Extraction can be optimal (`opt`), standard (`sta`), fast-optimal (`fop`), fast-standard (`fst`), quick-optimal (`qop`), quick-standard (`qst`). The default is set by keyword `DRS_EXT_MTD` (`opt`).
- `max_shift`: Maximum  $y$  shift (world coordinates) to be searched between science and flat-field frames. Default value is keyword `MAXYSHIFT`.
- `window_size`: In case of standard extraction this parameter sets the extraction window in the cross-dispersion ( $y$ ) direction (world coordinates). The default is set by keyword `DRS_EXT_W_SZ` (10). It may be reduced in some cases (see command description).
- `correl_pars`: In case of optimal or standard extraction one may set parameters controlling the definition of correlation function shape. `correl_pars` is a multiple components parameter. `correl_pars=drs_cor_max_fnd,drs_c`
  - `drs_cor_max_fnd`: definition of cross correlation shape. The default is set by keyword `DRS_COR_MAX_FND` ("Y")
  - `drs_cor_def_rng`: set range of definition of correlation shape: `[-drs_cor_def_rng,+drs_cor_def_rng]`. The default is set by keyword `DRS_EXT_DEF_RNG` (6).
  - `drs_cor_def_pnt`: set number of definition point for correlation shape: (Number of points:  $2*\text{drs\_cor\_def\_pnt}+1$ ). The default is set by MIDAS keyword `DRS_COR_DEF_PNT` (25).
  - `drs_cor_def_off`: set measured offset for the correlation shape: The default is set by MIDAS keyword `DRS_COR_DEF_OFF` (0).

Output:

- main products:
  - `out_spectra_000f.bdf`: Extracted spectrum for fiber nr.  $f$ , in pixel-order space, corrected for fibre throughput.

- `out_spectra_sig000f.bdf`: Variance on extracted spectrum.
- `out_spectra_raw000f.bdf`: Extracted spectrum, uncorrected for fibre throughput.
- `out_spectra_rawsig000f.bdf`: Variance on uncorrected extracted spectrum.
- `out_spectra_extco000f.bdf`: Mask for extracted spectrum.
- `out_spectra_rawextco000f.bdf`: Mask for uncorrected extracted spectrum.

#### Command description:

This command performs an optimal or standard normal spectrum extraction. Are supported three modes: “normal” (extract=opt/sta), the one suggested to the user; “fast” (extract=fop/fst), which uses input slit flat fields to clean the fibre PSFs but skips the steps of Y-shift determination and compensation (see below), a bit faster than “normal”; “quick” (extract=qop/qst) which does not uses the slit flat fields and does not correct for fibre shifts, the fast and less accurate mode.

- Background determination. First, if the BKGFITINLINE keyword is set to “yes” (as it is by default), a polynomial background is fitted to the positions in the `back_table`, and subtracted from the `science_frame`. For more details about how this is done and which keywords control it, see the documentation about the standalone level 3 command BKFIT/FLAMES. Setting BKGFITINLINE to “no” disables inline background fitting and subtraction.
- Y-shift determination. Then the y-axis shift of the orders/fibres in the `science_frame` is measured correlating the frame with a synthetic one composed of Gaussian-shaped pseudo-fibres centred on the positions traced by the order-fibre table, with a variable offset in the direction perpendicular to dispersion. The maximum of this correlation function is found and the corresponding offset is corrected for the “zero-point” shift measured at the PREPFIBRE/FLAMES stage. For robustness, this step comprises a preliminar correlation function shape determination and rough search for its maximum. This feature can be deactivated by the keyword(s) `DRS_COR_MAX_FND`, `DRS_COR_DEF_RNG`, `DRS_COR_DEF_PNT`. For more details about how this is done and which keywords control it, see the documentation about the standalone level 3 commands FNDYSHIFT/FLAMES and FNDRYSHIFT/FLAMES. In particular, if the order table provided here was updated by the PRENORM/FLAMES command, inline correlation will work as in FNDYSHIFT/FLAMES, whereas otherwise it will work as in FNDRYSHIFT/FLAMES. This  $y$  offset is saved as a descriptor called YSHIFT in the science frame. The correlation step can be disabled by setting the `max_shift` parameter to zero or, equivalently, setting to zero the `MAXYSHIFT` keyword and leaving the `max_shift` parameter blank. In this case, the values already contained in the YSHIFT descriptor are used.
- Y-shift correction. The normalised fibre flat-field frames are then shifted to bring them to coincidence with the above offset and multiplied by the slit flat-field frames, to approximate fibre flat-field frames exactly matching the science frame.
- Extraction. The frames determined as explained above are then used to perform an optimal extraction on the science frame, including a deconvolution of adjacent fibres (the deconvolution coefficients are computed directly from the odd/even fibre flat-fields).

Notes: Should the correlation step fail to detect a reasonable  $y$  shift, or if speed is of utmost importance, it is advisable to use standard extraction, disabling the correlation and reducing the integration window to the core of the fibres only, rather than optimal extraction, to minimise fibre to fibre contamination, at the price of losing a considerable fraction of the signal.

In cases of well-behaved set of frames, however, optimal extraction gives the best signal/noise ratio, especially for faint objects. The calculated spectra are finally written on the disk on files in MIDAS format, one set of files for each illuminated fibre.

The standard extraction includes the deconvolution of adjacent fibres, be them neighbouring fibres of the same order or the first and last fibre of adjacent orders. The deconvolution coefficients are computed directly from the shifted fibre flat-field frames.

Since in the case of fast optimal extraction no attempt at all is made to compensate for any  $y$  offset of the science frame with respect to the normalised fibre flat-field frames, this method should be selected with some caution.

In cases in which the  $y$  offset determination is a problem, the fast extraction should be used instead, limiting the integration window to the cores of the fibres to minimize ill effects at the cost of losing a considerable fraction of the signal.

#### 6.4.10 MERGE/FLAMES

Command Syntax: `MERGE/FLAMES in_spectrum rebin_base_name merge_base_name`

Input:

- `in_spectrum`: A single spectrum in pixel-order space, as extracted by the `EXTRACT/FLAMES` command. The name of the corresponding variance and bad-pixel frames are read from the descriptors `SIGMAFRAME` and `MASKFRAME` of the spectrum.
- `rebin_base_name`: The name of the rebinned spectrum. The names of the corresponding rebinned variance and bad pixel frames are derived appending respectively “`_sigma`” and “`_mask`” to this name.
- `merge_base_name`: The name of the optimally merged spectrum. The names of the corresponding rebinned variance and bad pixel frames are derived appending respectively “`_sigma`” and “`_mask`” to this name. The latter names are also written as descriptors `SIGMAFRAME` and `MASKFRAME` in the merged spectrum frame.

Output:

- main products:
  - `merge_base_name.bdf`: The optimally merged spectrum.
  - `merge_base_name_sigma.bdf`: The variance of the optimally merged spectrum.
  - `merge_base_name_mask.bdf`: The bad-pixel mask of the optimally merged spectrum.
  - `rebin_base_name.bdf`: The rebinned spectrum in wavelength-order space.
  - `rebin_base_name_sigma.bdf`: The variance of the rebinned spectrum in wavelength-order space.
  - `rebin_base_name_mask.bdf`: The bad-pixel mask of the rebinned spectrum in wavelength-order space.

Command description:

This command first makes use of the `REBIN/ECHELLE` command to rebin an extracted spectrum, its variance and its bad-pixel mask. Then it performs optimal merging of the orders, computing every pixel in the merged spectrum as a weighted average of all good pixels available covering its wavelength bin, with weights equal to the inverse of the respective variances.

For `REBIN/ECHELLE` to work, wavelength calibration must have been done already, using normal MIDAS echelle context facilities, i. e. `LINTAB` and `SAMPLE` keywords must be properly set and `LINTAB` must point to a valid wavelength calibration table.

Sometimes this command appear less robust than the combination REBIN/ECHELLE, MERGE/ECHELLE from the standard ECHELLE context. For this reason default merging adopted by the level 1 command REDUCE/FLAMES uses the echelle context commands.

Important information is contained in the binary table extensions. The most important information about the observed object (object id, its magnitude, right ascension and declination, fiber id) is displayed together with the reduced spectra using the command plot/uves (see section 8.9 at page 65).

## 6.5 Level 3 commands

### 6.5.1 BKFIT/FLAMES

Command Syntax: BKFIT/FLAMES *in\_frame* *order\_table* *background\_table*  
*kappa\_sigma\_threshold* *background\_frame*

Input:

- *in\_frame*: A single frame (after SPLIT/UVES and PREPPA/FLAMES).
- *order\_table*: An order-fibre table, as produced by e. g. OFPOS/FLAMES, possibly updated by PRENORM/FLAMES.
- *background\_table*: A background table, as produced by PREBKG/FLAMES, possibly with only a subset of it selected, e. g. using SELECT/BACK.
- *kappa\_sigma\_threshold*: The kappa factor to be used in kappa\_sigma clipping while fitting the background (The default is set by MIDAS keyword DRS\_K\_S\_THRE to 10).
- *out\_back\_ima*: the fitted background image name

Output:

- main products:
  - *out\_back\_ima.bdf*: The fitted background image.

Command description:

This command estimates the scattered light background in a UVES frame, fitting a bivariate polynomial on the regions of the input frame listed in the background table. The degrees of the polynomial are read from the BKGPOL keyword.

- First, the order centres in the input frame are computed as the middle point between the first and last lit fibres (as read from the FIBREMASK descriptor). If this is offset with respect to the order positions mapped by the order table, the positions of the windows in the background table are corrected accordingly. Then, all the windows in the background table are trimmed to exclude any positions in the input frame where light from the fibres is supposed to be present; windows which happen to be trimmed to zero size are obviously discarded at this stage.
- As a second step, if the BKGBADSCAN keyword is set to “fraction” or “absolute”, a neighbourhood of size determined by the BKGBADWIN keyword of each pixel in each window left from the remaining stage is checked for bad pixels. Bad pixels in each neighbourhood are counted, and if they exceed the fraction set in BKGBADMAXFRAC (if BKGBADSCAN=“fraction”) or the total number set in BKGBADMAXTOT (if BKGBADSCAN=“absolute”), that pixel is removed from the window. Windows which turn out to be empty after this additional trimming are discarded. This second trimming step is skipped if BKGBADSCAN is set to “none”.

- As a third step, a list of points to be fit is built from the input frame and the remaining windows from the steps above, in one out of four possible ways, selected by the value of the BKGFITMETHOD keyword. If BKGFITMETHOD="all", the list consists simply of all the pixels contained in the windows. If BKGFITMETHOD="median", for each window the pixel with the median value is found and added to the list. If BKGFITMETHOD="minimum", for each window the pixel with the minimum value is found and added to the list. Finally, if BKGFITMETHOD="average", for each window the median value is found first, all pixels in the window differing from it more than kappa\_sigma\_threshold times their standard deviation are discarded, and the weighted average of the remaining pixels in the window is added to the list.
- As a fourth step, a bivariate polynomial is actually fit to the list of pixels.
- Then, the values in the list are compared to the fitted values: if any pixel in the list deviates from the fitted values more than kappa\_sigma\_threshold times its standard deviation, at most MAXDISCARDFRACT times the number of pixels in the list are discarded in one pass, in order of worst fit, and the fit repeated on the remaining ones. This loop is repeated until no more pixels are rejected from the list, or until it has been repeated MAXBACKITERS times, whichever comes first.
- The resulting bivariate polynomial is then evaluated over the full input frame, and saved with the name specified at the command line.

*Note:* since this same background fitting algorithm is integrated, where needed, in data reduction steps (for speed reasons), the use of this command is mostly reserved for diagnostic purposes, or in cases where background fitting and subtraction is particularly difficult and needs quite a bit of fine tuning of the parameters, as it may happen if extremely bright, strongly saturated emission lines are present in the frame. In such a case, it is indeed recommended to perform the background fitting as a separate step, subtract it from the frame(s) to be reduced and disable inline background fitting and subtraction in the level 2 DRS commands (e. g. OPTEXTRACT/FLAMES) to be used on it.

### 6.5.2 FNDYSHIFT/FLAMES

Command Syntax: FNDYSHIFT/FLAMES in\_frame fibre\_ff\_cat slit\_ff\_cat order\_table [max\_shift]

Input:

- in\_frame: A single frame (after SPLIT/UVES and PREPPA/FLAMES).
- fibre\_ff\_cat: A catalog of normalised fibre flat-field frames, as produced by PREPFIBRE/FLAMES and updated by PRENORM/FLAMES.
- slit\_ff\_cat: A catalog of equalised slit flat-field frames, as produced by PREPSLIT/FLAMES.
- order\_table: An order-fibre table, as produced by e. g. OFPOS/FLAMES and updated by PRENORM/FLAMES.
- max\_shift: Maximum  $y$  shift (world coordinates) to be searched between in\_frame and flat-field frames. Default value is keyword MAXYSHIFT.

Output:

- main products:
  - YSHIFT: A MIDAS descriptor written into the input frame in\_frame, containing the  $y$  shift of the fibres in in\_frame with respect to the fibres in each normalised flat-field frame.

- **NFLATS**: A MIDAS descriptor written into the input frame `in_frame`, containing the size of the **YSHIFT** descriptor.

Command description:

The  $y$ -axis shift of the orders/fibres in `in_frame` is found by correlating the frame with a synthetic one composed of Gaussian-shaped pseudo-fibres centred on the positions traced by the order-fibre table, with a variable offset in the direction perpendicular to dispersion.

The size of the Gaussian shapes is forced to be the same as the one which was used to measure the “zero-point” shift measured at the PREPFIBRE/FLAMES stage.

The correlation is computed using one pixel every **CORRELXSTEP**; thus **CORRELXSTEP**=1 means that all pixels are used, **CORRELXSTEP**=2 means that every other pixels is used and so on. The safest bet (and the default) is **CORRELXSTEP**=1. Increasing **CORRELXSTEP** cuts the correlation times significantly, but **CORRELXSTEP** values larger than the size of the resolution element are risky: on a line emission spectrum it may happen that only the dark parts of the frame are used for the correlation, resulting in numerical instability and useless results.

The variable  $y$  offset is allowed to span the interval between `-max_shift` and `+max_shift`, and is referred to the fibre positions as measured on an all fibres flat-field frame by the PRENORM/FLAMES command, and stored in the order table.

The maximum of the correlation is determined using a numerical algorithm, with accuracy better than **CORRELTOL** and the corresponding  $y$  offset corrected for the “zero-point” shift measured at the PREPFIBRE/FLAMES stage.

This final  $y$  offset is saved as a descriptor called **YSHIFT** in the input frame. Since it is referred to a unique reference position, it is duplicated as many times as the number of normalised fibre flat-field frames.

*Note*: since this same correlation algorithm is integrated, where needed, in data reduction steps (for speed reasons), the use of this command is mostly reserved for diagnostic purposes, or in cases where the determination of the  $y$  shift is particularly difficult and needs quite a bit of fine tuning of the parameters, as may happen if extremely bright, strongly saturated emission lines are present in the frame. In such a case, it is indeed possible to perform this step separately, and disable it in the level 2 DRS commands (e. g. EXTRACT/FLAMES) to be used afterwards on the same frame. However, in such cases, it is more reasonable to switch off the correlation step completely and to use a standard extraction limited to the cores of the fibres, sacrificing a fraction of the flux to get reliably extracted spectra (or normalisation factors).

### 6.5.3 FNDRYSHIFT/FLAMES

Command Syntax: `FNDRYSHIFT/FLAMES in_frame fibre_ff_cat slit_ff_cat order_table [max_shift]`

Input:

- `in_frame`: A single frame (after SPLIT/UVES and PREPPA/FLAMES).
- `fibre_ff_cat`: A catalog of normalised fibre flat-field frames, as produced by PREPFIBRE/FLAMES.
- `slit_ff_cat`: A catalog of equalised slit flat-field frames, as produced by PREPSLIT/FLAMES.
- `order_table`: An order-fibre table, as produced by e. g. OFPOS/FLAMES.
- `max_shift`: Maximum  $y$  shift (world coordinates) to be searched between `in_frame` and flat-field frames. Default value is keyword **MAXYSHIFT**.

Output:

- main products:
  - `YSHIFT`: A MIDAS descriptor written to the input frame `in_frame` (in MIDAS format), containing the  $y$  shift of the fibres in the input MIDAS frame `in_frame` with respect to the fibres in each normalised flat-field frame.
  - `NFLATS`: A MIDAS descriptor written to the input frame `in_frame` (in MIDAS format), containing the size of the `YSHIFT` descriptor.

#### Command description:

The  $y$ -axis shift of the orders/fibres in `in_frame` is found by correlating the frame with a synthetic one composed of Gaussian-shaped pseudo-fibres centred on the positions traced by the order-fibre table, with a variable offset in the direction perpendicular to dispersion.

The size of the Gaussian shapes is forced to be the same as the one which was used to measure the “zero-point” shift measured at the PREPFIBRE/FLAMES stage.

The correlation is computed using one pixel every `CORRELXSTEP`; thus `CORRELXSTEP=1` means that all pixels are used, `CORRELXSTEP=2` means that every other pixels is used and so on. The safest bet (and the default) is `CORRELXSTEP=1`. Increasing `CORRELXSTEP` cuts the correlation times significantly, but `CORRELXSTEP` values larger than the size of the resolution element are risky: on a line emission spectrum it may happen that only the dark parts of the frame are used for the correlation, resulting in numerical instability and useless results.

The variable  $y$  offset is allowed to span the interval between `-max_shift` and `+max_shift`, and is referred to the fibre positions as found from the fibre flat-field frames. Hence, independent  $y$  offsets are measured with respect to each fibre flat-field frame in the `fibre_ff_cat` catalog supplied. This is obtained repeating the correlation step with the set of pseudo-fibres defined by the `FIBREMASK` descriptor in each fibre flat-field frame. The `fibre_ff_cat` catalog and `order_table` table are assumed to have been produced by the same invocation of the PREPFIBRE/FLAMES command.

The maximum of the correlation is determined using a numerical algorithm, with accuracy better than `CORRELTOL` and the corresponding  $y$  offsets corrected for the “zero-point” shifts measured at the PREPFIBRE/FLAMES stage.

This final  $y$  offsets are saved as a descriptor called `YSHIFT` in the input frame. The only difference between this command and `FINDYSHIFT/FLAMES` is that in this case they may have different values, and this command, differently from the latter, does not require `PRENORM/FLAMES` or to have been successfully run previously.

*Note:* since this same correlation algorithm is integrated, where needed, in data reduction steps (for speed reasons), the use of this command is mostly reserved for diagnostic purposes, or in cases where the determination of the  $y$  shift is particularly difficult and needs quite a bit of fine tuning of the parameters, as may happen if extremely bright, strongly saturated emission lines are present in the frame. In such a case, it is indeed possible to perform this step separately, and disable it in the level 2 DRS commands (e. g. `PRENORM/FLAMES`) to be used afterwards on the same frame. However, in such cases, it is more reasonable to switch off the correlation step completely and to use a standard extraction limited to the cores of the fibres, sacrificing a fraction of the flux to get reliably extracted spectra (or normalisation factors).

### 6.5.4 XTABMERGE/FLAMES

Command Syntax: `XTABMERGE/FLAMES in_ima in_tab out_tab`

Input:

- `in_ima`: Input image frame. Default ?
- `in_tab`: Input fibre order table. Default ?

- `out_tab`: output table. Collapsed binary extensions information corresponding to `in_ima` are put into `out_tab`.

Output: Collapsed binary extensions put in `out_tab`.

Command Description:

This auxiliary command is used to extract important information relative to UVES contained in the binary table extensions in the output table `out_tab`.

### 6.5.5 XTABDUMP/FLAMES

Command Syntax: `XTABDUMP/FLAMES in_frame ord_tab bin_tab fib_id [mode]`

Input:

- `in_frame`: Input frame. Default ?
- `ord_tab`: Input fibre order table. Default ?
- `bin_tab`: Input frame. Input collapsed binary extensions information table as prepared by command `XTABMERGE/FLAMES`.
- `fib_id`: Fibre id (according to DRS numeration) corresponding to frame `in_frame`. Default ?
- `method`: Dumping method. If set it just display the binary table information on the screen. Otherwise (+) it writes it in the frame. Default +.

Output: Either the frame `in_frame` with some extra MIDAS descriptor or this information displayed on the screen.

Command Description:

This auxiliary command is used to log important information contained in the binary table extensions either on the screen or in the frame.

### 6.5.6 PLOT/UVES

Command Syntax: `PLOT/UVES in_frame [x_range] [y_range] [title] [hcopy] [fib_id]`

Input:

- `in_frame`: Input frame. Default ?
- `x_range`: 1-dim data: wavelength range in Angstrom 2-dim data: sub-spectra range. Default +. If + the range is automatically set.
- `y_range`: y-axis range for each sub-spectrum. Default +. If + the range is automatically set.
- `title`: Title of the plot. Default +. If + the title is automatically set.
- `hcopy`: hardcopy filename. Default +.
- `fib_id`: Fibre id of `in_frame` as set by DRS (corresponding to file name extension after extraction). To plot FLAMES-UVES data this parameter is necessary (to add bin table information). For UVES-echelle data plotting this is not used. Default is +.

Output: Spectra plotted on graph.

Command Description:

This auxiliary command is used to plot results. In case of FLAMES-UVES data it is necessary to provide the `fib_id` parameter.

## 6.6 Level 4 commands

### 6.6.1 MODOFF/FLAMES

Command Syntax: `MODOFF/FLAMES formatcheck_frame`

Input:

- `formatcheck_frame`: Input format-check frame (or any frame in MOS mode).

Output:

- main products:
  - `q1`: `xy_trans`, a string of two comma-separated numbers respectively for the X and Y components of the `xy_trans` parameter (used by PREDICT/FLAMES).
  - `q2`: `angle`, a string of three comma-separated numbers respectively for the echelle, CD, CCD-rotation components of the `angle` parameter (used by PREDICT/FLAMES). Usually better to leave it at defaults 0,0,0.

Command description:

On the basis of the plate number., wavelength setting, CCD chip, appropriate numbers are set to describe the physical model offsets. See notes for PREDICT/FLAMES. This command must be used before PREDICT/FLAMES or FMTSTA/FLAMES to now what corrections apply to the physical model parameters.

### 6.6.2 FIBMSK/FILL

Command Syntax: `FIBMSK/FILL input_frame`

Input:

- `input_frame`: Input frame.

Output:

- main products:
  - `input_frame` with MAXFIBRES, FIBREMASK descriptors set.

Command description:

Fills the MAXFIBRES, FIBREMASK descriptors in the input frame, describing how many fibres are illuminated, and their fibre numbers. This command is called by SPLIT/UVES. It assigns the values of the descriptors according to the frame classification obtained from DPR keywords. For a proper automatic setting of the descriptors, which is vital for data reduction, it is mandatory that the DPR keyword set is as specified in Table 5.1. Otherwise it is very probable that data reduction (in particular the correlation step) fails. In such a case, it is recommended to check the MAXFIBRES and FIBREMASK descriptors and, if needed, set them to appropriate values by hand.

# Chapter 7

## Session examples

### 7.1 Using demo-level (Level 0) commands

These are commands for demo or tutorial purposes, requiring minimal or no user-selectable inputs. Example:

```
DEMO/FLAMES sref.cat
```

where `sref.cat` is a catalogue prepared with splitted (with SPLIT/UVES) raw frames and a MIDAS Th-Ar line reference table (read with INDISK/FITS).

For example, look at the example command sequence at page 17.

### 7.2 Using high-level (Level 1) commands

These commands are usually supersets of Level 2 commands which take care of setting relevant keywords, define file classification, input/output catalogs, etc.. The command sequence needed for a complete reduction is the following:

- SPLIT/UVES (to convert MIDAS to FITS, properly orient the frames, classify them)
- FMTSTAB/FLAMES (logical step 2 (first step) - setting `xy_trans` parameter)
- PREDICT/FLAMES (logical step 2 - (second step) zero order)
- ORFSFF/FLAMES (logical steps 1,3,4,5,6,7)
- WAVECAL/FLAMES (logical step 8)
- REDUCE/FLAMES (logical steps 9,10,11)

Where the logical step numbering is defined in the following section. Please see later on section 7.5 for a practical example on how to use such commands.

### 7.3 Using low-level (Level 2) commands

Command sequence:

- SPLIT/UVES (to convert MIDAS to FITS, properly orient the frames, classify them)
- PREPPA/FLAMES (logical step 1)
- PREDICT/FLAMES (logical step 2)

- OFPOS/FLAMES (logical step 3)
- PREBKG/FLAMES (logical step 4)
- PREPSLIT/FLAMES and MSFFSZ/FLAMES (logical step 5)
- PREPFIBRE/FLAMES (logical step 6)
- PRENORM/FLAMES for optimal or standard extraction (logical step 7)
- To perform the wavelength calibration it may be recommended to extract ThAr frames using the same facilities as for the science frames to be calibrated. In this case one would execute the following commands:
  - EXTRACT/FLAMES on ThAr frames for optimal (standard) extraction of wavelength calibration spectra (logical step 8a). this step can possibly be performed also with standard echelle context commands, integrating over a narrow window centred on each fibre (i. e. EXTRACT/EHELLE).
  - SEARCH/EHELLE on extracted ThAr spectra (logical step 8b)
  - IDENT/EHELLE using the wavelength calibration produced by PREDICT/FLAMES as a first-order guess (logical step 8c)

Or equivalently use, as does the pipeline, the simpler level 1 command WAVECAL/FLAMES, which executes the same commands with the only difference of extraction each fibre with average echelle extraction (EXTRACT/EHELLE) and a predefined extraction slit.

- EXTRACT/FLAMES on science frames for optimal (or standard) extraction of science spectra (logical step 9)
- MERGE/FLAMES rebin spectra and merge orders (logical step 10 and 11), or
  - REBIN/EHELLE applied on extracted spectra (logical step 10).
  - MERGE/EHELLE applied on rebinned spectra (logical step 11).

Some tuning may be needed to properly set keywords and descriptors in between the above commands, but it has been omitted to put emphasis on the actually relevant steps.

## 7.4 Using scripts

The script `flames_demo.sh` allows the user to perform a complete data reduction on a user-selectable set of science and calibration frames. Its usage has been described on page 49.

## 7.5 Data reduction chain using level-1 commands

We report here a data reduction chain, in which the output of the each command can be used as input of the next one until a complete data reduction is achieved.

```
CONFIG/DISP 800 600 .8
```

```
!1) Physical Model Step. We use also master formatcheck frames and the command
!FMTSTA/FLAMES to show also how to use such command to determine xy_trans
!values.
```

```
crea/icat ref.cat null DO_CLASSIFICATION >Null
```

```

crea/icat out.cat null DO CLASSIFICATION >Null

write/keyword trans/c/1/80 " " all
write/keyword rot/c/1/80 " " all
SPLIT/UVES flames_fmtchk.fits
INDISK/FITS thargood_3.tfits thargood_2.tbl >Null !ThAr LINE REFER table
ADD/ICAT ref.cat thargood_3.tbl >Null

write/keyword it/i/1/1 0
do it = 1 2
  MODOFF/FLAMES flames_fmtchk_{chip({it})}.bdf
  trans = q1
  rot = q2
  FMTSTA/FLAMES flames_fmtchk_{chip({it})}.bdf out.cat ref.cat 40,40 -
    {trans} {rot}

enddo

```

!2) Order-Fiber Table generation, SlitFF and fibreFF frame preparation

```

crea/icat raw.cat null DO_CLASSIFICATION >Null
crea/icat ref.cat null DO_CLASSIFICATION >Null

ADD/ICAT raw.cat flames_even_ff.fits >Null !add even fibre FF
ADD/ICAT raw.cat flames_odd_ff.fits >Null !add odd fibre FF
ADD/ICAT raw.cat flames_all_ff.fits >Null !add all fibre FF
ADD/ICAT raw.cat flames_sof_ff.fits >Null !add single fibre FF

!split frames to get proper format, orientation and frame classification with
!added the descriptor necessary to the DRS
SPLIT/UVES raw.cat sraw.cat

ADD/ICAT ref.cat flames_sff1.fits >Null !add slit FF
ADD/ICAT ref.cat flames_sff2.fits >Null !add slit FF
ADD/ICAT ref.cat flames_sff3.fits >Null !add slit FF

ADD/ICAT ref.cat flames_sff4.fits >Null !add slit FF
ADD/ICAT ref.cat flames_sff5.fits >Null !add slit FF
ADD/ICAT ref.cat flames_sff6.fits >Null !add slit FF

ADD/ICAT ref.cat flames_sff7.fits >Null !add slit FF
ADD/ICAT ref.cat flames_sff8.fits >Null !add slit FF
ADD/ICAT ref.cat flames_sff9.fits >Null !add slit FF

SPLIT/UVES ref.cat sref.cat
INDISK/FITS flames_mbia_redl.fits flames_mbia_redl.bdf >Null
INDISK/FITS flames_mbia_redu.fits flames_mbia_redu.bdf >Null
ADD/ICAT sref.cat flames_mbia_redl.bdf >Null
ADD/ICAT sref.cat flames_mbia_redu.bdf >Null

write/keyword wc/i/1/1 0

```

```

set/format i3
wc = wcenter/10.
add/icat sref.cat o{wc}REDL.tbl >Null
add/icat sref.cat l{wc}REDL.tbl >Null
add/icat sref.cat o{wc}REDU.tbl >Null
add/icat sref.cat l{wc}REDU.tbl >Null
-rename drs_setup_RED.L.tbl d{wc}REDL.tbl
-rename drs_setup_RED.U.tbl d{wc}REDU.tbl

add/icat sref.cat d{wc}REDL.tbl >Null
add/icat sref.cat d{wc}REDU.tbl >Null

!Do Data Reduction
ORFSFF/FLAMES sraw.cat sref.cat sref.cat

!3) Line table(s) preparation
crea/icat raw.cat null DO_CLASSIFICATION >Null

ADD/ICAT raw.cat flames_thar.fits >Null !ThAr frm
SPLIT/UVES raw.cat sraw.cat

ADD/ICAT sref.cat thargood_3.tbl >Null

WAVECAL/FLAMES sraw.cat sref.cat sref.cat AUTO Y NO

!4) Science reduction

CREA/ICAT raw.cat null DO_CLASSIFICATION >Null
CREA/ICAT out.cat null DO_CLASSIFICATION >Null

ADD/ICAT raw.cat flames_sci.fits >Null !science frame

SPLIT/UVES raw.cat sraw.cat

REDUCE/FLAMES sraw.cat out.cat sref.cat

```

## 7.6 Data reduction chain using level-2 commands

We report here a data reduction chain, in which the output of the each command can be used as input of the next one until a complete data reduction is achieved.

```

!=====
!This is a template procedure to run FLAMES-UVES data reduction
!command levels 2 on provided examples in the CDROM distribution
!using for each command were possible default parameter setting
!Input data names are hardcoded and refer to CDROM distribution
!=====
!Procedure ID
define/local pid/c/1/80 flames_test_cmd2
!We extend path to our data repository
!the environment variable UVES_HOME has to be defined
!${UVES_HOME}/tutorial/demo directory has to contain our data
define/local flames_data/c/1/80 " " all

```

```

flames_data = m$symbol("UVES_HOME")

if "{flames_data}" .eq. "UVES_HOME" then
  mess/out 1 {pid} "Environment variable UVES_HOME not set. Exit."
  return -1
else
  flames_data = "{flames_data}/tutorial/demo"
  set/midas dpath={flames_data}
endif

!We create a standard display-graph setting
CONFIG/DISP 800 600 .8
!We convert all input FITS to MIDAS
crea/icat raw_data.cat null DO_CLASSIFICATION
add/icat raw_data.cat flames_fmtchk.fits >null
add/icat raw_data.cat flames_ordef.fits >null
add/icat raw_data.cat flames_all_ff.fits >null
add/icat raw_data.cat flames_even_ff.fits >null
add/icat raw_data.cat flames_odd_ff.fits >null
add/icat raw_data.cat flames_sff1.fits >null
add/icat raw_data.cat flames_sff2.fits >null
add/icat raw_data.cat flames_sff3.fits >null
add/icat raw_data.cat flames_sff4.fits >null
add/icat raw_data.cat flames_thar.fits >null
add/icat raw_data.cat flames_sci.fits >null
SPLIT/UVES raw_data.cat split_data.cat

! In this example we suppose for easy to have a MASTER BIAS from UVES
! This could also be prepared from a list of UVES biases
! (same instrument configuration than FLAMES data)
! using the command MASTER/UVES

indisk/fits flames_mbia_red1.fits flames_mbia_red1.bdf
indisk/fits flames_mbia_redu.fits flames_mbia_redu.bdf
write/des flames_mbia_red1.bdf {UVES_IDSTRNG}/c/1/40 MASTER_BIAS_REDL
write/des flames_mbia_redu.bdf {UVES_IDSTRNG}/c/1/40 MASTER_BIAS_REDU

!We define a subroutine to compact the code
!Only one to keep it clear what commands the user has to run
@p {pid},REDUCE 1 !lower chip data reduction
@p {pid},REDUCE 2 !upper chip data reduction
!=====
ENTRY REDUCE
define/parameter p1 ? n "Ender chip id: 1/2"

if {p1} .eq. 1 then
  define/local chip/c/1/1 l
else
  define/local chip/c/1/1 u
endif
!-----
!Single Fibre Formatcheck step
!-----
!To be sure to not have bkg tables we delete them
DELETE/TABLE back NO

INDISK/FITS uves_thargood_3.tfits thargood_3.tbl

! we find physical model parameter corrections
define/local trans/c/1/80 " " all
define/local rot/c/1/80 " " all
MODEOFF/FLAMES flames_fmtchk_{chip}.bdf
trans = q1
rot = q2
PREDICT/FLAMES flames_fmtchk_{chip}.bdf wcal_{chip}.cat thargood_3.tbl 40,40 {trans} {rot}
!-----
!Single Fibre Order Definition step
!-----
add/icat wcal_{chip}.cat thargood_3.tbl >Null
define/houg flames_ordef_{chip}.bdf 0
!-----
!Master Bias Subtraction from: all, odd, even, sci frames
!-----

```

```

compute/image b_flames_all_ff_{chip} = flames_all_ff_{chip} - flames_mbia_red{chip}
compute/image b_flames_even_ff_{chip} = flames_even_ff_{chip} - flames_mbia_red{chip}
compute/image b_flames_odd_ff_{chip} = flames_odd_ff_{chip} - flames_mbia_red{chip}

compute/image b_flames_sff1_{chip} = flames_sff1_{chip} - flames_mbia_red{chip}
compute/image b_flames_sff2_{chip} = flames_sff2_{chip} - flames_mbia_red{chip}
compute/image b_flames_sff3_{chip} = flames_sff3_{chip} - flames_mbia_red{chip}
compute/image b_flames_sff4_{chip} = flames_sff4_{chip} - flames_mbia_red{chip}

compute/image b_flames_sci_{chip} = flames_sci_{chip} - flames_mbia_red{chip}
!-----
!FIBRE ORDER TABLE DETERMINATION
!-----
create/icat in_fibres_{chip}.cat null >null
add/icat in_fibres_{chip}.cat b_flames_odd_ff_{chip} >Null
add/icat in_fibres_{chip}.cat b_flames_even_ff_{chip} >Null

!We associate a bad pixel mask and a variance to the frames
PREPPA/FLAMES in_fibres_{chip}.cat

!We find a 1st raw order table
OFPOS/FLAMES {ORDTAB},raw_order_{chip}.tbl,in_fibres_{chip}.cat

!We create a bkg table
PREBKG/FLAMES raw_order_{chip}.tbl back_{chip}.tbl
!-----
!SLIT FLAT FIELD DATA REDUCTION
!-----
!We measure size of each FF flat region and
!their shift with respect to our (raw) order table
MSFFSZ/FLAMES b_flames_sff1_{chip} raw_order_{chip}.tbl
MSFFSZ/FLAMES b_flames_sff2_{chip} raw_order_{chip}.tbl
MSFFSZ/FLAMES b_flames_sff3_{chip} raw_order_{chip}.tbl
MSFFSZ/FLAMES b_flames_sff4_{chip} raw_order_{chip}.tbl

!We associate to each slit flat field a mask and a variance
create/icat in_slits_{chip}.cat null >null
add/icat in_slits_{chip}.cat b_flames_sff1_{chip}.bdf >Null
add/icat in_slits_{chip}.cat b_flames_sff2_{chip}.bdf >Null
add/icat in_slits_{chip}.cat b_flames_sff3_{chip}.bdf >Null
add/icat in_slits_{chip}.cat b_flames_sff4_{chip}.bdf >Null

PREPPA/FLAMES in_slits_{chip}.cat

!We extract the minimum set of slit flat fields which covers the max Y span
!Each slit FF is equalized in flux to the adjacent one
!output frames get prefix slitff_{chip}
PREPSLIT/FLAMES in_slits_{chip}.cat raw_order_{chip}.tbl out_slitff_{chip}.cat slitff_{chip}
!-----
!FIBRE FLAT FIELD DATA REDUCTION
!-----
!We divide odd/even by slitff, clean them for bad pixels
!output frames get prefix fibreff_{chip}
PREPFIBRE/FLAMES in_fibres_{chip}.cat,out_slitff_{chip} back_{chip} -
raw_order_{chip}.tbl {DRS_K_S_THRE} out_fibres_{chip}.cat fibreff_{chip}

!We search for bad pixels in the all flat fields
define/local badpxframe/c/1/80 bp_all_{chip}.bdf
BPIMA/FLAMES b_flames_all_{chip}.bdf {badpxframe}

!We associate a bad pixel mask and a variance to the all flat field
PREPPA/FLAMES b_flames_all_ff_{chip}

!We normalize all FF by slitFF, compensate eventual shifts to the odd/even
! base, extract the all FF to find out each fibre throughput correction
PRENORM/FLAMES b_flames_all_ff_{chip} out_fibres_{chip}.cat,out_slitff_{chip} -
back_{chip},raw_order_{chip}.tbl fib_order_{chip}.tbl
!-----
!Science Extraction
!-----
!We collapse bin tab info relative to science frame
!This is necessary when one uses PLOT/UVES to display
!The final merged results

```

```

XTABMERGE/FLAMES flames_sci_{chip}.bdf fib_order_{chip}.tbl xt_sci_{chip}.tbl

!We find a bad pixel mask on the science frame
badpxframe = "bp_sci_{chip}.bdf"
BPIMA/FLAMES b_flames_sci_{chip}.bdf {badpxframe}

!We associate a bad pixel mask and a variance frame to the science
PREPPA/FLAMES b_flames_sci_{chip}

!We update the previously determined background table on the basis
!of the new fibre order table
PREBK/FLAMES fib_order_{chip}.tbl back_{chip}.tbl

!We extract the science frame products will receive prefix fxb_{chip}
EXTRACT/FLAMES b_flames_sci_{chip} out_fibres_{chip}.cat,out_slitff_{chip} -
back_{chip},fib_order_{chip}.tbl fxb_{chip}
!-----
!Wavelength Calibration
!-----
!REDL-->FIB_ODEF_ID(1) This is a MIDAS descriptor versus which
!REDU-->FIB_ODEF_ID(2) The WAVECAL/FLAMES procedure checks for
!We copy our fibre order table on a shorter name
!(max 12 chars, comprised MIDAS extension) to be able to use
!MIDAS ECHELLE commands as is doing WAVECAL/FLAMES
!The order table to be recognized as such need a proper value for
!its descriptor DO_CLASSIFICATION
-copy fib_order_{chip}.tbl fot_{chip}.tbl
write/des fot_{chip}.tbl DO_CLASSIFICATION/c/1/25 {FIB_ODEF_ID({p1})}

add/icat wcal_{chip}.cat fot_{chip}.tbl >Null

!Follows wavelength calibration part
!This is the actual name of the LINE-FIBRE table for 580 REDL setting
define/local parLinTab/c/1/80 lin580L1x1.tbl

WAVECAL/FLAMES flames_thar_{chip}.bdf wcal_{chip}.cat wcal_{chip}.cat AUTO Y NO
!-----
!We rebin and merge science extracted spectra
!-----
set/eche ORDTAB = fot_{chip}.tbl
select/tab {ORDTAB} all
statistic/table {ORDTAB} :FIBRE
define/local fib_min/i/1/1 0
define/local fib_max/i/1/1 0
fib_min = outputr(1)
fib_max = outputr(2)
select/tab {parLinTab} all
define/local it/i/1/1 0
define/local rsample/r/1/1 0

do it = fib_min fib_max

set/format i1
if {{parLinTab},FIBREMASK({it})} .eq. 1 then
if {b_flames_sci_{chip}.bdf,FIBREMASK({it})} .eq. 1 then

    select/tab {parLinTab} :fibre.eq.{it}
    -copy {parLinTab} tmp_{it}_{chip}.tbl

!the following are the ones indeed used from necrebi.for
!We 1st clear them out from temporary table just to be sure
delete/des tmp_{it}_{chip}.tbl ORDER
delete/des tmp_{it}_{chip}.tbl COEFS
delete/des tmp_{it}_{chip}.tbl COEFI
delete/des tmp_{it}_{chip}.tbl COEFD

copy/dd {parLinTab} ORDER{it} tmp_{it}_{chip}.tbl ORDER
copy/dd {parLinTab} COEFS{it} tmp_{it}_{chip}.tbl COEFS
copy/dd {parLinTab} COEFI{it} tmp_{it}_{chip}.tbl COEFI
copy/dd {parLinTab} COEFD{it} tmp_{it}_{chip}.tbl COEFD

-copy tmp_{it}_{chip}.tbl tmp_{chip}.tbl
rsample = 2.*({tmp_{chip}.tbl,PIXEL(1)})/3.

```

```

set/echelle SAMPLE = {rsample}
set/echelle LINTAB = tmp_{chip}.tbl

rebin/echelle fxb_{chip}_000{it}.bdf -
    wfxb_{chip}_000{it}.bdf {rsample} NONL -
    tmp_{chip}.tbl

rebin/echelle fxb_{chip}_sig000{it}.bdf -
    wfxb_{chip}_sig000{it}.bdf {rsample} NONL -
    tmp_{chip}.tbl

!file_sig is a variance frame
compute/ima weight.bdf = 1./wfxb_{chip}_sig000{it}.bdf

merge/echelle wfxb_{chip}_000{it}.bdf -
    mwfxb_{chip}_000{it}.bdf ? OPTIMAL weight.bdf -
    varmfxb_{chip}_000{it}.bdf

merge/echelle wfxb_{chip}_sig000{it}.bdf -
    mwfxb_{chip}_000{it}_sigma.bdf ? OPTIMAL weight.bdf -
    varmfxb_{chip}_000{it}_sigma.bdf

compute/image mwfxb_{chip}_err000{it}.bdf = sqrt(mwfxb_{chip}_000{it}_sigma.bdf)

rebin/echelle fxb_{chip}_raw000{it}.bdf -
    wfxb_{chip}_raw000{it}.bdf {rsample} NONL -
    tmp_{chip}.tbl

rebin/echelle fxb_{chip}_rawsig000{it}.bdf -
    wfxb_{chip}_rawsig000{it}.bdf {rsample} NONL -
    tmp_{chip}.tbl

!file_sig is a variance frame
compute/ima weight_raw.bdf = 1./wfxb_{chip}_rawsig000{it}.bdf

merge/echelle wfxb_{chip}_raw000{it}.bdf -
    mwfxb_{chip}_raw000{it}.bdf ? OPTIMAL -
    weight_raw.bdf varmfxb_{chip}_raw000{it}.bdf

merge/echelle wfxb_{chip}_rawsig000{it}.bdf -
    mwfxb_{chip}_raw000{it}_sigma.bdf ? OPTIMAL -
    weight_raw.bdf varmfxb_{chip}_raw000{it}_sigma.bdf

compute/image mwfxb_{chip}_rawerr000{it}.bdf = sqrt(mwfxb_{chip}_raw000{it}_sigma.bdf )
select/tab {parLinTab} all

!To use PLOT/UVES frames we have to add a number of descriptors
@p flames_add_extra_des b_flames_sci_{chip}.bdf mwfxb_{chip}_000{it}.bdf
@p flames_add_extra_des b_flames_sci_{chip}.bdf mwfxb_{chip}_raw000{it}.bdf
@p flames_add_extra_des b_flames_sci_{chip}.bdf mwfxb_{chip}_err000{it}.bdf
@p flames_add_extra_des b_flames_sci_{chip}.bdf mwfxb_{chip}_rawerr000{it}.bdf
@p flames_add_extra_des b_flames_sci_{chip}.bdf mwfxb_{chip}_000{it}_sigma.bdf
@p flames_add_extra_des b_flames_sci_{chip}.bdf mwfxb_{chip}_raw000{it}_sigma.bdf

!To use PLOT/UVES frames we have to add a number of descriptors
XTABDUMP/FLAMES mwfxb_{chip}_000{it}.bdf fot_{chip}.tbl xt_sci_{chip}.tbl {it}
XTABDUMP/FLAMES mwfxb_{chip}_raw000{it}.bdf fot_{chip}.tbl xt_sci_{chip}.tbl {it}
XTABDUMP/FLAMES mwfxb_{chip}_err000{it}.bdf fot_{chip}.tbl xt_sci_{chip}.tbl {it}
XTABDUMP/FLAMES mwfxb_{chip}_rawerr000{it}.bdf fot_{chip}.tbl xt_sci_{chip}.tbl {it}
XTABDUMP/FLAMES mwfxb_{chip}_000{it}_sigma.bdf fot_{chip}.tbl xt_sci_{chip}.tbl {it}
XTABDUMP/FLAMES mwfxb_{chip}_raw000{it}_sigma.bdf fot_{chip}.tbl xt_sci_{chip}.tbl {it}

!Plot data
ASSIGN/GRA G,3
modify/grap w
if "{NICE_CREA}" .eq. "Y" then
    PLOT/UVES mwfxb_{chip}_000{it}.bdf -
        P4="FIBRE data ({b_flames_sci_{chip}.bdf,{h_instrume}}): " P6={it}
endif
endif
enddo
return 0

```

!=====



# Chapter 8

## Troubleshooting

### 8.1 Problems in context initialization

#### Symptom(s)

- You get the message

```
mode(3) = 0
^^^
```

Invalid or non existing key name ...

Keynames (max. 15 chars.) have to begin with a letter.

Local keynames should not match system keynames like e.g. USER, LOG, ERROR,

#### Possible cause(s)

- You have initialized your MIDAS session in a way incompatible with your MIDVERS (02FEBp11.1 or later).

#### Proposed solution(s)

- In your alias flmidas (see section 2) you have used `mode(3) = 0` instead of `mid$mode(3) = 0`. Use `mid\mode(3) = 0` if you have bash.

**Justification** Starting from MIDVERS=02FEBp11.1, conventions have been changed, to avoid conflicts between global keywords used from MIDAS and from UVES pipeline.

### 8.2 Problem in using display with 32 bits depth computers

#### Symptom(s)

- Several problems during data reduction and execution of several commands of the UVES pipeline (involving the display).

#### Possible cause(s)

- You have a computer with a 32 bit (true color) depth screen.

#### Proposed solution(s)

- Give the command `init/disp p5=rgbq` before the command `config/display`.

**Justification** This is a known problem which has yet to be solved at low level (MIDAS).

### 8.3 Problem using the scripts

#### Symptom(s)

- Error messages are reported, no window is displayed.

#### Possible cause(s)

- In your path are not defined the commands: `xdialog` (HP-UX), or `xmessage` (SunOS, Linux, OSF1)

#### Proposed solution(s)

- Make sure that the specified commands can be found in your path

**Justification** The given commands are used to display messages. If they are not available you get an error.

#### Symptom(s)

- When you run the script a window is popping up, but reports the error:  
cannot execvp inmidas

#### Possible cause(s)

- You have defined inmidas as an alias. This is an error.

#### Proposed solution(s)

- Unalias inmidas and make sure that inmidas is in your path:
  - `unalias inmidas`
  - `which inmidas`

**Justification** inmidas should be an executable shell script in your path and not be defined as an alias.

#### Symptom(s)

- when you run a script some file is not available.

#### Possible cause(s)

- You have given in input some file with a nonexistent path

#### Proposed solution(s)

- Check how you run the script and verify all the input files are accessible (readable executing the script).

**Justification** The scripts need you to specify the full path for each input file.

## 8.4 PREDICT/FLAMES

### Symptom(s)

- In the output plots, the XDIF-X and YDIF-X plots do not appear as elongated “clusters” of points with typical size  $\approx 3 - 5$  pix, possibly horizontal and centred at ordinate value zero, as they should, but show loss of aggregation or, even worse, scattered points.
- Later on, during data reduction, the wavelength calibration step fails.

### Possible cause(s)

- The format-check frame you are reducing is considerably shifted with respect to the standard case (possibly due to an occasional instrument spectral format shift induced for example by a macro earthquake).

### Proposed solution(s)

- The experience accumulated with UVES, which has yet to be confirmed in the case of FLAMES-UVES data (for which the stability constraints are more stringent), demonstrated that, for spectral format shifts up to  $\pm 5$  pixels, it is not necessary to modify the input `xy_trans` parameters. Shifts above such a threshold are typical of macro earthquake events. As macro earthquakes are not very frequent, it was decided, for the time being, not to implement an auto recover step in the procedure. This would be possible for example having available a proper reference formatcheck and introducing a negative feedback which would correct the initial `xy_trans` settings using the information of the X and Y median shift obtained from the stability check in a loop which could be terminated when the shift in X and Y with respect to the reference formatcheck is less than one pixel.

**Justification** This step uses the UVES physical model to predict the spectral format. Such a model was calibrated during UVES commissioning choosing appropriate parameter values to cover all main settings. These are specified internally into the physical model code. At the same time reference formatcheck frames have been taken to check for instrument stability. The command `MODOFF/FLAMES`, called by `PREDICT/FLAMES`, should evaluate for each instrument setting appropriate offsets of the simultaneous calibration fibre with respect to the UVES echelle mode slit position image center.

Should a significant earthquake event occur, this can be detected during Operations, and the instrument is then realigned to the reference configuration.

### Symptom(s)

- This step fails
- The formatcheck frame image shows a very dim or not detectable order trace.

### Possible cause(s)

- The calibration exposure has been aborted. This results in a frame with not enough signal to detect the order trace.

### Proposed solution(s)

- In this case there is no solution. Usually in such a case at least another frame should have been taken, so that a user should have at least one good frame to reduce his data.

**Justification(s)**

- Operations may require to abort a calibration. In such a case the calibration is repeated so that the user always has a complete set of good data.

## 8.5 PREPSLIT/FLAMES

**Symptom(s)**

- Error message: Error while reading slit Flat Fields...  
...prepslitff.exe operation not permitted

**Possible cause(s)**

- The input catalogue (usually inslitff\_x.cat, x=l,u) is empty
- During previous data reduction operations (for example using command ORFSFF/FLAMES) the message “frame not found” was displayed.
- This usually means that in the catalogue fed in input to the command some frame is either missing or does not have the proper DO\_CLASSIFICATION. Please check that all frames are present and that their DO\_CLASSIFICATION is appropriately set.
- An improper frame classification is a symptom of a wrong DPR keyword setting, which causes SPLIT/UVES to assign a default DO\_CLASSIFICATION to that frame.

**Proposed solution(s)**

- Make sure that the input catalogue is properly filled.
- Make sure that the DO\_CLASSIFICATION of the raw splitted slit flat fields is properly set.
- Make sure that the DPR keywords in the slit flat fields are properly set.

**Justification** If the input frames have wrong DPR keywords SPLIT/UVES assigns to the splitted frames a default classification (value of DO\_CLASSIFICATION keyword). This will not be recognized by following data reduction commands. One can get to a situation for which it could for instance happen that the input catalog to the command PREPSLIT/FLAMES is empty.

## 8.6 PREPFIBRE/FLAMES

**Symptom(s)**

- Error message: Error while reading fibre Flat Fields...  
...prepfibreff.exe operation not permitted

**Possible cause(s)**

- The input catalogue (usually infibreff\_x.cat, x=l,u) is empty
- During previous data reduction operations (for example using command ORFSFF/FLAMES) the message “frame not found” was displayed.

- This usually means that in the catalogue fed in input to the command some frame is either missing or does not have the proper DO\_CLASSIFICATION. Please check that all frames are present and that their DO\_CLASSIFICATION is properly set.
- An improper frame classification is a symptom of a wrong DPR keyword setting, which makes SPLIT/UVES to assign a default DO\_CLASSIFICATION to that frame.

**Proposed solution(s)**

- Make sure that the input catalogue is properly filled.
- Make sure that the DO\_CLASSIFICATION of the raw splitted fibre flat fields is properly set.
- Make sure that the DPR keywords in the fibre flat fields are properly set.

**Justification** If the input frames have wrong DPR keywords SPLIT/UVES assigns to the splitted frames a default DO\_CLASSIFICATION which is not then recognized by following data reduction commands in particular one can arrive to a situation for which the input catalogue to the command PREPFIBRE/FLAMES is empty.

## 8.7 EXTRACT/FLAMES

**Symptom(s)**

- The DRS stops, reporting an error message saying that a condition of maximum over 3 points has not been reached. The correlation values obtained at the 3 points are very high, of the order of  $10^6$ .

**Possible cause(s)**

- You have not enough definition points for the correlation function.
- You have set a too narrow range to search the correlation function shape.
- The cubic approximation does not properly describe the shape of the correlation function near the maximum.

**Proposed solution(s)**

- Experiment with the correlation definition keywords (DRS\_COR\_MAX\_FND, DRS\_COR\_DEF\_RNG, DRS\_COR\_DEF\_PNT) until the step works, unless you are really in a case for which the cubic approximation for the correlation function is not appropriate.

**Justification** During commissioning the instrument stability was found to be at the level of a few pixels. To cope with such shifts it was necessary to implement an additional search of the correlation function shape and its maximum. This is done within certain limits defined by corresponding global keywords. The problem was identified and fixed in the software which controls the instrument, so that the expected stability should now be well within 1 pixel, and such a problem should not occur.

## 8.8 EXTRACT/FLAMES

**Symptom(s)**

- The DRS stops, reporting an error message saying that a condition of maximum over 3 points has not been reached. The correlation values obtained at the 3 points are very high, of the order of  $10^6$ .

**Possible cause(s)**

- You have an improper background table.
- You have not updated your background table using the order-fibre table produced by PRENORM/FLAMES or EXTRACT/FLAMES.
- You have a saturated frame so that even if you did update the background table properly before doing the extraction, saturation corrupts the background image.
- You have deactivated the correlation function shape predetermination.

**Proposed solution(s)**

- Make sure to have updated the background table before extraction.
- To mask as much as possible saturated pixels, measure the value of the intensity (LOAD/IMA GET/CUR) on the saturated area and use the minimum value got as saturation threshold of the command BPIMA/FLAMES:
 

```
BPIMA/FLAMES new_bad_pixel.bdf saturation_value
write/key badpxframe/c/1/80 new_bad_pixel.bdf
PREPPA/FLAMES saturated_ima.bdf
```

 and try to repeat the extraction
- If this is not sufficient, set the keyword BKGBADSCAN (defaulted to “none”) to values “fraction” or “absolute”. Modifying the value of the keyword BKGBADWIN one can change the size of the area in which bad pixels are searched around the centre of each bad-pixel window. A default value of 50,50 means that examined pixels along x-direction are pixels from  $x\_start\_win-50$  to  $x\_end\_win+50$ , where  $x\_start\_win$  and  $x\_end\_win$  indicate the starting and ending values of the background window. Same meaning along the y direction.
 

Using BKGBADSCAN=“fraction” the maximum number of bad pixels accepted before eliminating one window from the list is BKGBADMAXFRAC (defaulted to 0.02) times the total number of pixels in the examined region.

Using BKGBADSCAN=“absolute” the maximum number of bad pixels accepted before eliminating one window from the list is BKGBADMAXTOT (defaulted to 200).
- If this does not solve the problem, use the command SELECT/BACK to eliminate the saturated regions from the background fit.
- If this does not help, try to lower the degree of the polynomial used in the background evaluation.
- If this does not help, use standard extraction, disabling the correlation step and shrinking the integration window to only use the cores of the fibres, excluding the areas where fibres overlap. In this way, provided the cross-dispersion shift between calibrations and the frame to be extracted is less than 1 pixel, you will extract sensible spectra, albeit losing a good fraction of the signal (all the fibre wings).
- If this does not help... bad luck you got saturated data!

**Justification** Having saturated images, one may get *very* poor background determinations, which may cause the correlation step to fail.

## 8.9 Object information given on plots of merged spectra

In case of FLAMES-UVES data important information contained in the binary table extensions is added.

On the basis of given `fib_id` parameter, PLOT/UVES will display in the plot information about the observed object (object id, its magnitude, right ascension and declination, fiber id). This information is taken from tables with names containing the prefix `xt_` (`xt_sci_l.tbl` and `xt_sci_u.tbl` for science step). Those tables contain the collapsed information carried on by the two binary extension table for the FLAMES-UVES fibres. Of particular interest to the user may be columns: `FIBREORD` (which indicates the order of fibres read from the DRS), `OBJECT` (object's ID), `MAGNITUDE` (object's magnitude), `RA` (object's right ascension), `DEC` (object's declination). Using command level 1 extracted spectra will contain a numeric extension `000N` (`N=2-9` in case of OzPoz mode and `N=1-8` in case of SimCal mode), where typically `N` corresponds to the fibre ID (1 for the SimCal fibre, 2-9 for other fibres).



# Appendix A

## DRS customization

### A.1 FLAMES-UVES pipeline data reduction parameters

The FLAMES-UVES pipeline gives the user the possibility to customize the data reduction. This can be done modifying the settings in the file

```
${PIPE_HOME}/flames/pipe/proc/flames_def_drs_par.prg
```

We suggest to do it with care, being sure of what one does and at his own risk. Here we describe the tuning parameters, and suggest also whether each MIDAS keyword (data reduction parameter) should or should not be changed.

- **NICE\_CREA**: this keyword affect the display (Y) or not (N) of some frames. Default is N. Can be modified. If set to Y the data reduction is slightly slowed.
- **DECENTSNR**: How large should the SNR on a fibre be in a calibration frame, at a given order and  $x$ , for that slice to be considered “good”? Default: 10. Suggested to not change it. Since it is used while preprocessing the flat field calibration data, for changes to take effect one ought to rerun some or all of the relevant steps (e. g. PREPSLIT/FLAMES, PREPFIBRE/FLAMES, PRENOR/FLAMES...).
- **MATCHTHRESH**: How close should a detected fibre be to the position predicted by the zero order approximation, so that it is recognized and labeled by the matchorder step. Default 4. Suggested to not change it. Setting it too low will cause orders/fibres to be skipped, setting it too large will cause traces to be assigned to the wrong order/fibre. Only used in OFPOS/FLAMES.
- **HALFIBREWIDTH**: Half size of each fibre on the detector measured so that the entire size contains 100% of the flux. Default: 7.5. This parameter is only read in OFPOS/FLAMES, and its value hence stored in a descriptor and used throughout data reduction, for consistency. If one wants to change it, he should probably repeat the whole data reduction procedure for the new value to take effect (don't do it).
- **MAXFIBRES**: Maximum number of fibres. Default: 9. Keep it. If decreased the DRS will probably crash.
- **SAV\_BORD\_SZ**: Amount of pixels from the 50% intensity threshold of the SlitFF size which is discarded on both sides of the slitFF to be sure to be in its flat part. A large value ( $\sim 5$ ) makes you sure that only the flat part of the slitFF is used, and probably the final quality will be better; on the other hand, this will shrink the effective usable size of the used slitFF so that you need to have enough overlapping between them and enough slitFF to cover all the fibres you like to extract. A small value (2) may introduce some quality defect if the flat part of the slitFFs is not really flat. Default: 3. It may be changed if really necessary with the given advices. Only used in MSFFSZ/FLAMES. If you *really* want to tune the YSHIFT and HALFWIDTH descriptors of the slitFFs, measure them with GET/GCOURSE on a cross-dispersion cut of the frames and set the desired values manually.

- **X\_WIND\_SIZE**. Half X window size for median filter used in determining the half size of each slitFF and its offset. Default: 3. Leave it as it is. Only used in MSFFSZ/FLAMES. See the comments for SAV\_BORD\_SZ.
- **Y\_WIND\_SIZE**. Half Y window size for median filter used in determining the half size of each slitFF and its offset. Default: 5. Leave it as it is. Only used in MSFFSZ/FLAMES. See the comments for SAV\_BORD\_SZ.
- **Y\_SEARCH\_WIND**. Search window size to filter image used in determining the half size of each slitFF and its offset. Default: 100. Leave it as it is. Only used in MSFFSZ/FLAMES. See the comments for SAV\_BORD\_SZ.
- **ORD\_TRESH**. Number of orders cut either on max and min detected orders. Used in determining the half size of each slitFF and its offset. We cut some orders to be sure to get Y intercepts on the cross-order cut at the detector center within the detector. Default: 2. It may be slightly increased, but it is preferable to leave it as it is. Only used in MSFFSZ/FLAMES. See the comments for SAV\_BORD\_SZ.
- **N\_CLIP\_MED**. K-S clipping iterations over median. Used in determining the half size of each slitFF and its offset. Default: 4. Leave it as it is. Only used in MSFFSZ/FLAMES. See the comments for SAV\_BORD\_SZ.
- **N\_CLIP\_AVG**. K-S clipping iterations over average. Used in determining the half size of each slitFF and its offset. Default: 2. Leave it as it is. Only used in MSFFSZ/FLAMES. See the comments for SAV\_BORD\_SZ.
- **INT\_TRESH**. Signal fraction of the slitFF top value used to define the borders of the flat part of the slitFF. A value as small as 0.5 is good to be sure to detect slitFF borders. Default: 0.5. Leave it as it is. Only used in MSFFSZ/FLAMES. See the comments for SAV\_BORD\_SZ.
- **MAXYSHIFT**. This is the halfwidth of the interval of y shifts which are sampled when searching the local maximum of the correlation. Default: 3. Making it smaller may make the search for the maximum slightly faster, but it *will* cause it to fail if the actual y shift is outside this interval. Making it larger may bracket more than one maximum and cause a spurious y shift determination. Don't touch this if you don't need to.
- **NBTRACES**. 0. Number of traces (order times fibres). Default 0.
- **MINFIBREFRAC**. Minimum fibre fraction coverage for extraction. Default: 0.3. Leave it as it is.
- **BKGFITINLINE**. Inline background fitting. Default yes. Keep it.
- **BKGFITMETHOD**. Background fitting method. Possible values are ALL, MEDIAN, MINIMUM, AVERAGE. Default: AVERAGE.
- **BKGBADSCAN**. Background table bad pixel frame scanning switch. Possible values are FRACTION, ABSOLUTE and NONE. Default: NONE.
- **BKGBADWIN**. Background table bad pixel frame scanning window size. Default: 50,50
- **BKGBADMAXFRAC**. Background table bad pixel frame scanning threshold fraction. Default: 0.02
- **BKGBADMAXTOT**. Background table bad pixel scanning threshold number. Default: 200.
- **BKG\_MAX\_IO\_WIN**. Number of background windows in each full inter order. Default: 500.
- **DRS\_BKG\_FIT\_POL**. Polynomial degree used for BKG fit order. Default 2,2
- **BKG\_XY\_WIN\_SZ**. x,y maximum size of each background window. Default 6,2.

- DRS\_FILT\_HW\_XY. Size of X half window and Y half window. Default 2,1.
- DRS\_FILT\_IMAX. Maximum filtering iterations in frame preparation. Default 300.
- DRS\_FILT\_KS. Threshold above which pixel are flagged as bad in filtering in frame preparation. Default 10.
- DRS\_FILT\_SAT\_SW. Do you want mask saturated pixels in frame preparation ([yes]/No)?. Default is YES.
- DRS\_FILT\_MASK. Do you want a filter/generated bad pixel mask: ([NONE]/MEDIAN)?. Default is NONE.
- MAXYSHIFT. Half width of the interval to scan for correlation, when determining y shift. Default is 3.
- GAUSSFIBRESIGMA. Gaussian pseudofibre total halfwidth for correlation. Default: 1.5. Only read in PREPFIBRE/FLAMES, then the value is stored in a table descriptor and used throughout, for consistency. Don't make it much smaller or it will make the correlation numerically fragile due to increased pixelisation effects. Don't make it too large or signals outside the fibres will spuriously affect the correlation. As a rule of the thumb,  $3 \cdot \text{GAUSSFIBRESIGMA} \lesssim \text{GAUSSHALFWIDTH} \lesssim \text{HALFBREWIDTH}$ .
- GAUSSHALFWIDTH Gaussian pseudofibre total halfwidth for correlation. Default: 6. Only read in PREPFIBRE/FLAMES, then the value is stored in a table descriptor and used throughout, for consistency. See comments above for GAUSSFIBRESIGMA.
- MAXBACKITERS This is the maximum number of kappa-sigma clipping iterations which we are willing to perform in background fitting. Default 20.
- MAXDISCARDFRACT This is the maximum fraction of windows/pixels which we are willing to discard by kappa-sigma clipping in each iteration of the background fitting loop. Default: 0.1. Making it larger will cause the background fitting to converge in less iterations, but can make it more fragile. Making it smaller will render the kappa-sigma clipping more cautious, hence it will require more iterations for all bad pixels to be discarded and convergence reached. The default chosen works well in most situations, leave it as it is.
- MAXCORRITERS. This is the maximum number of iterations which we are willing to perform in correlation. Default: 30.
- CORRELTOL. This is the absolute accuracy with which the maximum in the correlation function must be determined. Default 0.005. Leave it as it is.
- CORRELXSTEP. This is the X step to use while computing the correlation: it must be a positive integer, 1 means "use all pixels" 2 means "use every other pixel:", 3 means "use one every three" etc.. Default: 1. A larger value can make the correlation much faster, but it will also make it more fragile in case of spectra dominated by strong and narrow emission lines.
- GAUSSCORRELSCL. Obsolete (to be removed in future releases).
- GAUSSCORRELWND. Obsolete (to be removed in future releases).
- MAXCLEANITERS This is the maximum number of cleaning iterations to be tried on a given slice in flames\_prep\_fibre, before giving up on its normalisability and falling back to the second cleaning strategy. Default 10. Only used in PREPFIBRE/FLAMES.
- MAXSINGLEPXFRC This is the maximum acceptable fraction of the flux in a given slice in one single pixel; a higher fraction than this means that there was some numerical instability and/or unmasked bad pixel, and that it must be discarded. Default: .3. Only used in PREPFIBRE/FLAMES. Leave it as it is.

- **MAXOPTITERSINT** This is the maximum number of iterations which we are willing to perform in optimal extraction. Default: 25.
- **MINOPTITERSINT** This is the minimum number of iterations we are willing to perform in optimal extraction. Default: 2.
- **XKILLSIZE**
- **YKILLSIZE** When performing sigma-clipping in the optimal extraction, how many other adjacent pixels in the x and/or y direction(s) should be discarded along with the one exceeding threshold? A cosmic or cosmetic problem is likely to affect a spot larger than 1 pixel. Default: **XKILLSIZE=1, YKILLSIZE=1**. Larger values will cause a slightly faster convergence of optimal extractions, as clusters of bad pixels are removed in one go. However, some good pixels may get thrown away along with the bad ones. The default is the safe (and slow) choice.
- **MAXORDER**. In `flames_tracing`, a few arrays are statically defined, and need to be large enough to contain all the orders which could be possibly found. We defined it to a hefty one thousand. Default 1000. You will hardly ever want to touch this.
- **DYRANGE** Width of the y half window to be used when performing order/fibre labeling. Default: 300. It works well, leave it as it is.
- **DYSTEP** Step of the scan in y while performing order/fibre labelling. Default 0.1. It works well, leave it as it is.
- **MASKTHRES** Defines the minimum value a rebinned mask must have in order to consider the corresponding pixel of the rebinned spectrum “good”. Since a pixel in the rebinned frame may be computed using also bad pixels, we want to throw out pixels which contain even a very small fraction of “badness”. Default: 0.99. It must be a number close enough to 1 to ensure that only good pixels were used to derive a rebinned value, but not too close, to avoid throwing away good pixels just due to numerical rounding errors. The default works well, leave it as it is or, at most, tune it slightly. Used only in **MERGE/FLAMES**
- **FRACSLICESTHRES** Defines the minimum fraction of slices that must be good, for a fibre to be considered covered enough at the end of fillholes, in `flames_prep_fibreff`, to avoid numerical instabilities in `gaussselfcorrel` if a fibre is only very barely covered by the slitFF frames. Default 0.3. Leave it as it is.
- **MAXROWS** The maximum permitted sizes for the order tables created by the DRS: Default 300000. You will hardly ever want to touch this.
- **MAXCOLS** The maximum permitted sizes for the order tables created by the DRS: Default 10. You will hardly ever want to touch this.
- **DRS\_PTHRE\_MAX** Maximum threshold for pixel saturation detection: Default  $6 \cdot 10^4$ . Good  $5 \cdot 6 \cdot 10^4$
- **DRS\_PTHRE\_MIN** Minimum threshold for pixel saturation detection: Default -20. Good -20
- **DRS\_EXT\_MTD** Extraction method. Default `opt`. Possible values `opt`: optimal; `sta`: standard; `fop`: fast-optimal; `fst`: fast-standard; `qop`: quick-optimal; `qst`: quick-standard.
- **DRS\_K\_S\_THRE** Kappa-sigma Threshold used in extraction. Default 10.
- **DRS\_KSIGMA\_THRE** Kappa sigma Threshold. Default 10.
- **DRS\_EXT\_W\_SIZ** Integration window size. Default 10. 10 is a good value if fibre deconvolution works fine.

- DRS\_MIDAS2FITS MIDAS to FITS conversion switch. At the end of a procedure it allow MIDAS to FITS format conversion. Default N. Possible value Y/N.
- DRS\_BIAS\_MTD Bias subtraction Method: M: Master Bias subtraction; <num> constant value subtraction; N: no bias subtraction.
- DRS\_FILT\_SW Filter switch. Default none. Possible values: none/average
- DRS\_SFF\_FIBFF Slitff\*-Fibreff frames preparation. Y: yes, slower, for DFO N: no, faster, for PSO once CDB is ready. Default Y
- DRS\_CREA\_BP\_TAB Switch to create (Y) or not (N) a bad pixels table. Default N
- DRS\_PHYSMOD\_REC Physical model auto recover switch: Y: yes the physical model autorecovers N: No the physical model does not autorecover. Default Y.
- DRS\_USE\_ORDEF Use (Y) or not (N) of the ORDERDEF as part of the odd/even fibre FF Keep it at Y to support SimCal mode. Default is N.
- DRS\_MER\_MTD What merging method are we using: FLAMES or ECHELLE. If ECHELLE method REDUCE/FLAMES uses REBIN/ECHELLE and MERGE/ECHELLE comands. If FLAMES method REDUCE/FLAMES uses MERGE/FLAMES. ECHELLE method is more robust.  
Default is ECHELLE.
- DRS\_SCI\_RAW Produce or not raw science data. Default is Y.
- DRS\_VERBOSITY DRS MIDAS C Library verbosity level. Default LOW.
- DRS\_MES\_LEV MIDAS procedure main messaging level. Default is 4
- DRS\_CUBIFY Switch to activate creation and usage of slitff\* and fibreff\* cubes. Default is N.
- DRS\_COR\_MAX\_FND DRS strengthened correlation shape definition and pre search of maximum switch: Y do pre search of correlation's maximum. N don't do it (do only search of max with modified Brent method starting from points -3,0,+3). Default is Y.
- DRS\_COR\_DEF\_RNG DRS Correlation function's range: [-DRS\_COR\_DEF\_RNG,+DRS\_COR\_DEF\_RNG] pix 6.
- DRS\_COR\_DEF\_PNT DRS Correlation function's number of definition points. Effective number of points is 2\*DRS\_COR\_DEF\_PNT+1. Default is 25.
- DRS\_COR\_DEF\_OFF DRS Correlation function's center of definition. Default is 0.
- DRS\_WCAL\_MODE. Wavecal mode. Default is Auto.
- DRS\_WCAL\_RPLT. Default for wavecal resolution plots creations. Y.
- DRS\_WCAL\_FITS. Defaults for FITS table production in wavecal. Default N.
- DRS\_BASE\_NAME. Default base name for extracted science file prefix. Default is science.
- DRS\_SCI\_CUBE. For packing science products on planes and cubes. Default is N.
- DRS\_WCAL\_DC. Default for wavecal solution polynomial degree. Originally was 5, more precise, next to haave better robustness we switched to 4.

- DRS\_WCAL\_TOL. Default for wavelength calibration polynomial solution parameter TOL. This sets a threshold. Points which discard by the found solution more than TOL pix are outliers. Current defaults is 0.6. A user willing to achieve a very accurate wavelength calibration solution, using the improved ThAr table (thargood\_3.tfits), may decide (at the risk of a decreased wavecal recipe robustness), to decrease this value down to 0.07.
- DRS\_WCAL\_PAR. DRS\_WCAL\_PAR=DRS\_WCAL\_MODE,DRS\_WCAL\_RPLT,DRS\_WCAL\_FITS,DRS\_WCAL\_DC,DRS\_WCAL\_TOL
- DRS\_SCI\_PAR1=DRS\_EXT\_MTD,DRS\_COR\_MAX\_FND,DRS\_COR\_DEF\_RNG,DRS\_COR\_DEF\_PNT,DRS\_COR\_DEF\_OFF
- DRS\_SCI\_PAR2=DRS\_BIAS\_MTD,DRS\_FILT\_SW,DRS\_PTHRE\_MAX
- DRS\_P8\_OFPOS Parameter P8 of hogh/echelle. Default “.10,-.1,.1,.005,1.”. Reasonable balues are:
  - 520 “.05,-.1,.1,.005,1.”
  - 580 “.10,-.1,.1,.005,1.”
  - 860 “.10,-.1,.1,.005,1.”
  - DRS\_P8\_OFPOS\_S1 First component of parameter P8 used in hogh/echelle. Default 0.05,.10,.10.
  - DRS\_SCAN\_MIN
  - DRS\_SCAN\_MAX This MIDAS keyword set the parameter SCAN(1) and SCAN(2) respectively used by the command hough/echelle. The chosen values, allow to skip a CCD portion approximately equal to the Y span covered by eight fibres, in the prliminary determination of fibre traces done by the command OFPOS/FLAMES. This to prevent detection of very small portion of orders in the lower right hand side and upper left hand side part of a splitted frame. This help to make wavelength calibration and science extraction more robust for 860 setting. For other settings possible values are also 1,2048 which allows to cover the entire detector. We suggest the user to keep the chosen defaults: DRS\_SCAL\_MIN= 55,73,73 and DRS\_SCAL\_MAX= 1993,1975,1975 respectively for settings 520, 580, 860.
  - DRS\_MER\_DELTA Cutting values using in merging frames. Default 5,5.
  - DRS\_DEL\_SW Choice switch to set DRS\_MER\_DELTA values. Used in UVES echelle extraction. Possible values are D (Default: no setting), A (Automatic setting), and U (User defined setting). Default A.
  - DRS\_SCI\_SIM Switch to activate use of SimCal setting.
  - DRS\_SFF\_HW\_MIN Threshold to minimum value accepted in Slit Flat Width Half Width. Default is 10.

# Index

- Arc lamp reference table
  - Motivation, 5
- Background determination, 43
  - QC, 43
- Background table generation
  - Description, 35
- Bad pixel table preparation, 33
- Binary table information, 46, 47
- BKFIT/FLAMES, 43
  - Description, 43
  - Syntax, 11
- BPIMA/FLAMES, 33
  - Description, 33
  - Syntax, 11
- CDROM/FLAMES, 18
  - Description, 18
- Context initialization
  - Troubleshooting, 59
- Data extraction
  - Science data, 40
- Data reduction
  - Optimal, 10
  - Optimal extraction, 27
  - Parameter defaults, 13
  - Science data, 40
  - Standard, 10
  - Standard extraction, 27
- Data Reduction Peculiarities, 8
- Defaults for data reduction parameters, 13
- DEMO/FLAMES, 16
  - Description, 16
  - Examples, 49
  - Syntax, 11
- Description
  - BKFIT/FLAMES, 43
  - BPIMA/FLAMES, 33
  - CDROM/FLAMES, 18
  - DEMO/FLAMES, 16
  - EXTRACT/FLAMES, 40
  - FIBMSK/FILL, 48
  - flames\_steps.sh, 15
  - FMTSTA/FLAMES, 20
  - FNDRYSHIFT/FLAMES, 45
  - FNDYSHIFT/FLAMES, 44
  - Frames preparation, 32
  - MERGE/FLAMES, 42
  - MODOFF/FLAMES, 48
  - MSFFSZ/FLAMES, 36
  - OFPOS/FLAMES, 33
  - Order merging, 42
  - ORDERPOS/UVES, 22
  - ORFSFF/FLAMES, 24
  - PLOT/UVES, 47
  - PREBKG/FLAMES, 35
  - PREDICT/FLAMES, 21
  - PRENORM/FLAMES, 38
  - PREPFIBRE/FLAMES, 37
  - PREPPA/FLAMES, 32
  - PREPSLIT/FLAMES, 36
  - REDUCE/FLAMES, 27
  - SPLIT/UVES, 19
  - TUTORI/FLAMES, 16
  - WAVECAL/FLAMES, 26
  - XTABDUMP/FLAMES, 47
  - XTABMERGE/FLAMES, 46
- Descriptor
  - FIBREMASK
    - FIBMSK/FILL, 48
  - MAXFIBRES
    - FIBMSK/FILL, 48
- Disk usage, 3
- DO Classification keywords, 10
- DPR Keywords, 9
- Even fibre Flat Field
  - Motivation, 6
- Examples, 49
  - DEMO/FLAMES, 49
  - Level 0 commands, 49
  - Level 1 commands, 49
  - Level 2 commands, 49
  - Scripts, 50
- EXTEND/PATH
  - Syntax, 11
- EXTPATH/CAT

- Syntax, 11
- EXTRACT/FLAMES, 40
  - Description, 40
  - Syntax, 11
  - Troubleshooting
    - correlation fails, 63
- Extraction
  - Optimal, 10, 27
  - Standard, 10, 27
- FIBMSK/FILL, 48
  - Description, 48
  - Syntax, 11
- Fibre flat field preparation, 37
- Fibre Flat Fields
  - Motivation, 5
- Fibreff\* frames generation, 24
- FIBREMASK descriptor
  - FIBMSK/FILL, 48
- FITS Keywords
  - DPR, 9
  - Plate Id, 9
  - Simultaneous calibration fibre, 9
- flames\_demo.sh, 10
  - Description, 13
- flames\_popul.sh
  - Description, 14
- flames\_steps.sh
  - Description, 15
- FMTSTA/FLAMES, 20
  - Calls MODOFF/FLAMES, 20
  - Description, 20
  - Syntax, 11
- FNDRYSHIFT/FLAMES, 45
  - Description, 45
  - QC, 45
  - Syntax, 11
- FNDYSHIFT/FLAMES, 44
  - Description, 44
  - QC, 44
  - Syntax, 11
- Format-check
  - motivation, 5
- Frames preparation
  - Description, 32
- FRMGET/CAT
  - Syntax, 11
- hardware requirements, 3
- Installation, 3
  - CDROM, 3
- installation, 3
  - Level 0 commands, 16
    - Examples, 49
  - Level 1 commands
    - Examples, 49
  - Level 2 commands
    - Example, 49
  - Logical Step Sequence, 7
- MASFIBRES descriptor
  - FIBMSK/FILL, 48
- MASFLAT/FLAMES
  - Master slit flat field, 23
- MASTER/FLAMES, 23
  - Master Bias, 23
  - Master Dark, 23
  - Master slit flat field, 23
- MERGE/FLAMES, 42
  - Description, 42
  - Syntax, 11
- MODOFF/FLAMES, 48
  - Description, 48
  - Syntax, 11
- MSFFSZ/FLAMES, 36
  - Description, 36
  - Syntax, 11
- Nasmyth screen
  - Motivation, 6
- Odd fibre Flat Field
  - Motivation, 6
- OFPOS/FLAMES, 33
  - Description, 33
  - Syntax, 11
- Optimal extraction, 10
- Order definition frame
  - Motivation, 6
- Order merging
  - Description, 42
- Order-fibre table creation
  - Description, 33
- Order-fibre table generation, 24
- ORDERPOS/UVES, 22
  - Description, 22
- ORFSFF/FLAMES, 24
  - Description, 24
  - Fibreff\* frames generation, 24
  - Order-fibre table generation, 24
  - Slitff\* frames generation, 24
  - Syntax, 11

- Performance, 3
  - Disk space, 3
  - RAM, 3
- Physical Model, 21
- Physical model, 20
  - Automatic parameter correction, 48
- Plate Id FITS Keywords, 9
- PLOT/UVES, 47
  - Description, 47
  - Syntax, 11
- Plotting merged frames, 47
- PREBKG/FLAMES, 35
  - Description, 35
  - Syntax, 11
- PREDICT/FLAMES, 20, 21
  - Calls MODOFF/FLAMES, 21
  - Description, 21
  - Syntax, 11
  - Troubleshooting, 61
- PRENORM/FLAMES, 38
  - Description, 38
  - Syntax, 11
- PREPFIBRE/FLAMES, 37
  - Description, 37
  - Syntax, 11
  - Troubleshooting
    - wrong descriptor FIBREMASK, 62
- PREPPA/FLAMES, 32
  - Description, 32
  - Syntax, 11
- PREPSLIT/FLAMES, 36
  - Description, 36
  - Syntax, 11
  - Troubleshooting
    - empty input catalogue, 62
- Problem scripts
  - Troubleshooting, 60
- Problem using display
  - Troubleshooting, 59
- PURGEPATH/CAT
  - Syntax, 11
- QC
  - Background determination, 43
  - FNDYSHIFT/FLAMES, 45
  - FNDYSHIFT/FLAMES, 44
- REDUCE/FLAMES, 27
  - Description, 27
  - Science data reduction, 27
  - Syntax, 11
- Saturation
  - Problems, 6
- Science data extraction, 40
- Science data reduction, 27
- Scripts
  - Description, 13
  - Example, 50
  - flames\_demo.sh, 13
  - flames\_popul.sh, 14
  - flames\_steps.sh, 15
- Simultaneous calibration fibre
  - Motivation, 6
- Slit Flat Field
  - Measure
    - Offset, 36
    - Size, 36
- Slit flat field preparation, 36
- Slit Flat Fields
  - Motivation, 5
- Slitff\* frames generation, 24
- SPLIT/UVES, 19
  - Description, 19
  - Syntax, 11
- Standard extraction, 10
- STEPS/FLAMES
  - Syntax, 11
- Troubleshooting, 59
  - Context initialization, 59
  - EXTRACT/FLAMES
    - correlation fails, 63
  - PREDICT/FLAMES, 61
  - PREPFIBRE/FLAMES
    - wrong descriptor FIBREMASK, 62
  - PREPSLIT/FLAMES
    - empty input catalogue, 62
  - Problem scripts, 60
  - Problem using display, 59
- TUTO/FLAMES
  - Syntax, 11
- TUTORI/FLAMES, 16
  - Description, 16
- WAVECAL/FLAMES, 26
  - Description, 26
  - Syntax, 11
- Wavelength calibration, 26
- XTABDUMP/FLAMES, 47
  - Description, 47
- XTABMERGE/FLAMES, 46
  - Description, 46