

UT3 Visitor Telescope Report 11 / 12-Feb-2015



Report generated Feb 16 2015 09:37 UTC

- [Weather »](#)
- [Night Timeline »](#)
- [Time Accounting »](#)
- [Comments »](#)
- [Summary of Data »](#)
- [Daytime Calibrations »](#)
- [Nighttime Observations »](#)

Night Statistics

Report Interval 11 Feb 16:00 - 12 Feb 16:00 UT
Night Time 12 Feb 00:46 - 12 Feb 09:05 UT
Night Length 08:19
Evening Twilight 11 Feb 23:33 - 12 Feb 00:46 UT
Morning Twilight 12 Feb 09:05 - 12 Feb 10:18 UT

Common Staff

Day Shift Coordinators Giovanni Carraro
Day Time Astronomers Stephane Brillant
Christophe Martayan
Siyi Xu
Xavier Haubois
Night Shift Coordinators Juan Carlos Munoz-Mateos

Operation Specialists

Weather Officers Marcelo Lopez
Julio Navarrete

Telescope Staff

Night Astronomers Juan Carlos Munoz-Mateos
Julien Milli
Telescope Operators Claudia Reyes
Visiting Astronomers

Weather

General Weather Conditions

Seeing 0.6 - 2.0 arcsec
Humidity 50 - 65%
Wind 0 - 8 m/s
Temperature 13 - 15 C

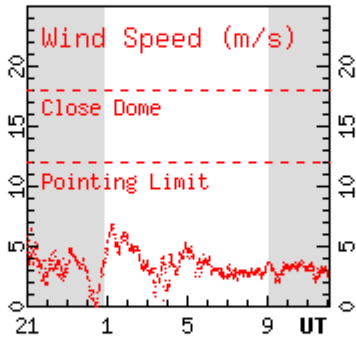
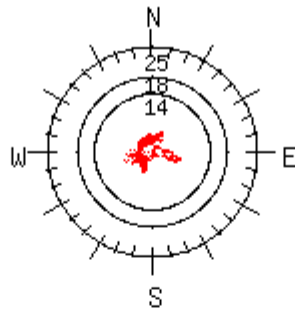
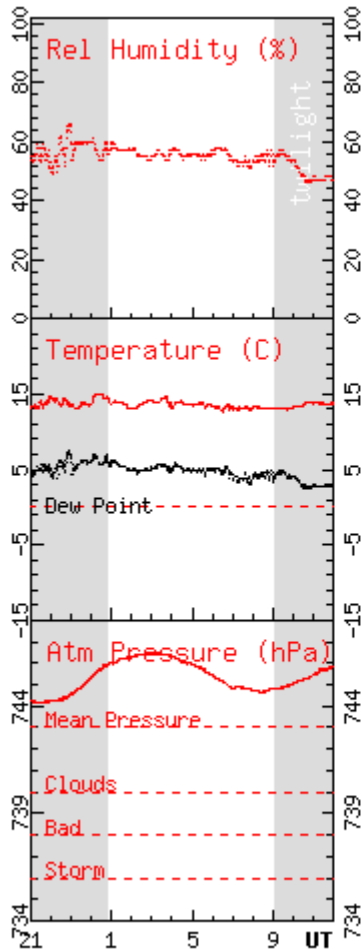
Overall Comment

Weather Observations

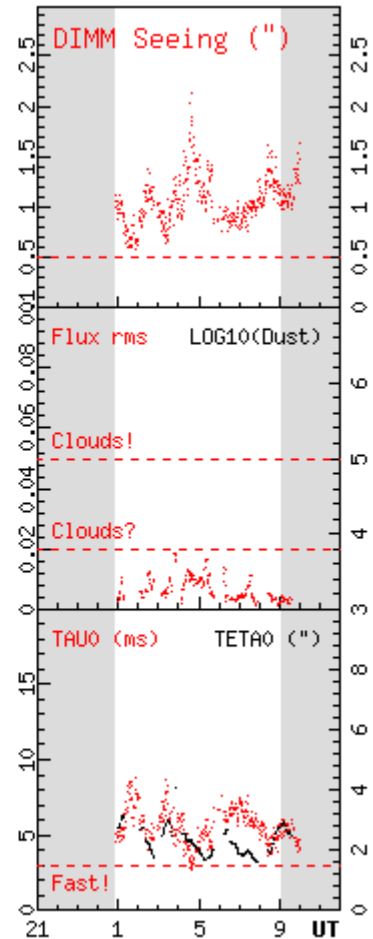
Time	Conditions	Comment
23:54	HU CL	rh ~ 60%,. Telescopes delivered closed - <i>Paranal Observatory</i>
00:24	HU CL	Opening telescopes, rh ~ 52% - <i>Paranal Observatory</i>
01:35	HU CL	According to ZP on OMEGACAM. rh ~ 54% - <i>Paranal Observatory</i>
05:20	HU CL	Clear according to the OMEGACAM ZP - <i>Paranal Observatory</i>
06:32	TN HU	Some clouds coming from North - <i>Paranal Observatory</i>
07:37	HU CL	Some clouds to NE but at an altitude lower than 30 deg. - <i>Paranal Observatory</i>

Legend: PH-Photometric, CL-Clear, TN-Thin cirrus, TK-Thick cirrus, CY-Cloudy, WI-Windy, HU-Humid, RN-Rain, SN-Snow, EQ-Earthquake, OT-Other

Weather Chart



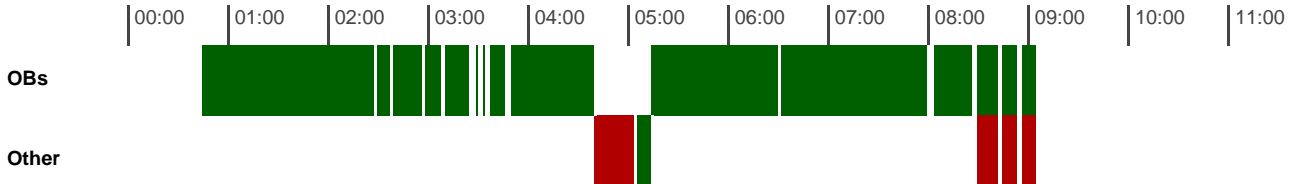
Ambient conditions for
Paranal
on the night of
Wed, February 11, 2015
Night begin: 00:46 UT
end: 09:06 UT



ESO - Ambient Conditions Database

<http://archive.eso.org/asm/ambient-server>

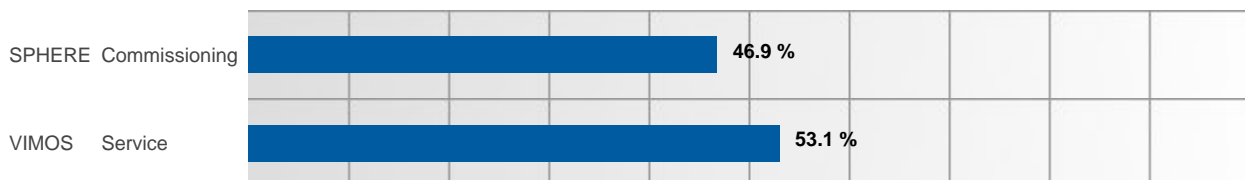
Timeline



Time Accounting

Total Time

Instrument	Mode	Time spent
SPHERE	Commissioning	03:54:10
VIMOS	Service	04:25:22

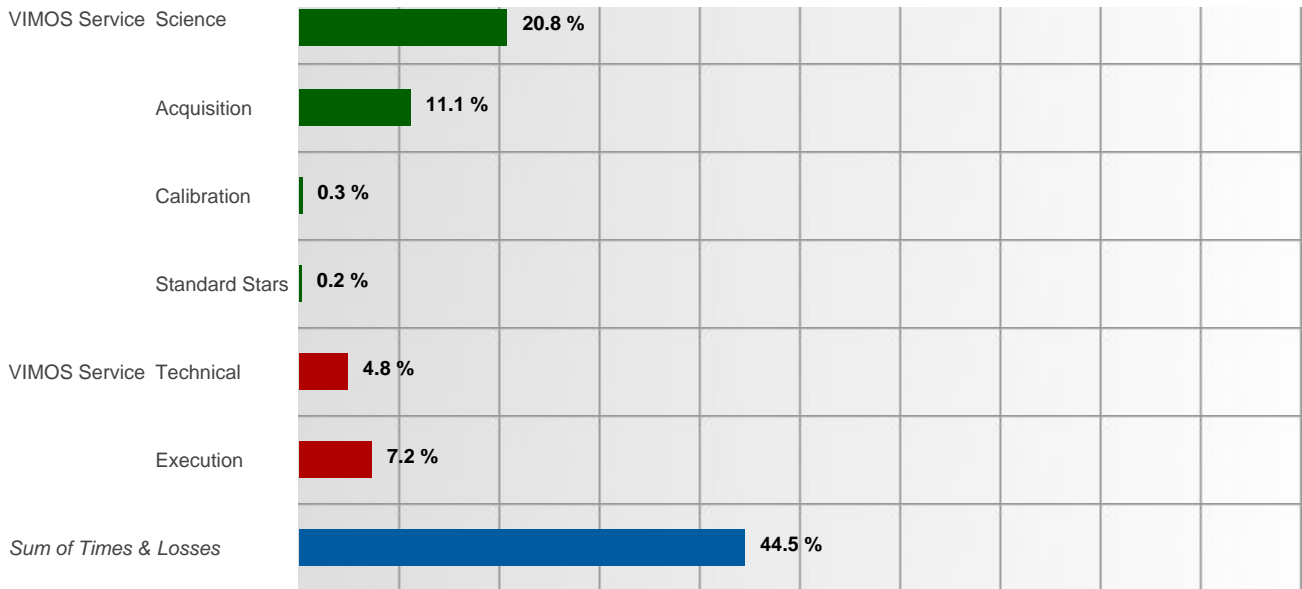


Instrument Times

Instrument	Mode	Science	Acquisition	Calibration	Standard
VIMOS	Service	01:43:44	00:55:37	00:01:31	00:01:11

Total Losses

Instrument	Mode	Technical	Misc	Execution	Preparation	Idle	Weather
VIMOS	Service	00:24:11	00:00:00	00:36:12	00:00:00	00:00:00	00:00:00



Percentages are relative to the night duration of 08:19. Instrument times (green bars) for Science, Calibration and Standard Stars are derived from produced FITS files using instrument-specific algorithms. Losses (red bars) are derived from Downtime Slots, Ob Slots and Partial Losses within OB Slots that were classified with some loss type.

Comments

Setup Activities

Time Comment

Public Comments

Time Comment

Summary of Data

Daytime Calibrations

OB ID	from > to	Duration	Run ID	Instrument	OB Name	Grade	Mode
200155281	21:19:05 > 21:47:39	00:28:34	60.A-9050(A)	VIMOS	VIMOS Focus Check	_	Service
200155281	21:47:48 > 21:55:45	00:07:57	60.A-9050(A)	VIMOS	VIMOS Focus Check	X	Service
200313600	09:29:18 > 11:27:39	01:58:21	60.A-9249(A)	SPHERE	No name	X	Service
200127566	09:29:25 > 14:40:34	05:11:09	60.A-9050(A)	VIMOS	Calibrations	X	Service

Nighttime Observations

OB ID	from > to	Duration	Run ID	Instrument	OB Name	Loss Type	Grade	Mode
1157773	00:45:16 > 02:28:19	01:43:03	60.A-9358(A)	SPHERE	LkCa15_PDI science..	No Loss	B	Commissioning
1157775	02:28:58 > 02:37:46	00:08:48	60.A-9358(A)	SPHERE	PSF_Reference_PDI_..	No Loss	X	Commissioning
1157775	02:38:55 > 02:57:18	00:18:23	60.A-9358(A)	SPHERE	PSF_Reference_PDI_..	No Loss	X	Commissioning
1157775	02:57:22 > 03:08:52	00:11:30	60.A-9358(A)	SPHERE	PSF_Reference_PDI_..	No Loss	B	Commissioning
1158217	03:10:42 > 03:25:22	00:14:40	60.A-9385(A)	SPHERE	HD 86006	No Loss	_	Commissioning
1158217	03:27:54 > 03:27:55	00:00:01	60.A-9385(A)	SPHERE	HD 86006	No Loss	_	Commissioning
1158217	03:29:47 > 03:30:32	00:00:45	60.A-9385(A)	SPHERE	HD 86006	No Loss	X	Commissioning
1158217	03:33:57 > 03:34:39	00:00:42	60.A-9385(A)	SPHERE	HD 86006	No Loss	X	Commissioning
1158217	03:38:02 > 03:46:52	00:08:50	60.A-9385(A)	SPHERE	HD 86006	No Loss	X	Commissioning
1158217	03:48:54 > 03:48:56	00:00:02	60.A-9385(A)	SPHERE	HD 86006	No Loss	_	Commissioning
1158217	03:50:02 > 04:40:23	00:50:21	60.A-9385(A)	SPHERE	HD 86006	No Loss	B	Commissioning
1103473	05:14:34 > 06:30:28	01:15:54	093.A-0910(B)	VIMOS	MOS_P4-mask2_2	No Loss	A	Service
968129	06:30:41 > 08:00:15	01:29:34	090.B-0498(B)	VIMOS	MOS_MR_VCC1154_S	No Loss	A	Service
200258954	08:04:05 > 08:26:47	00:22:42	60.A-9050(A)	VIMOS	MOS SpecPhot MR Fe..	No Loss	X	Service
1117744	08:29:32 > 08:42:35	00:13:03	094.A-0575(A)	VIMOS	PRE_J1410-p1	Execution	C	Service
1117747	08:45:01 > 08:53:57	00:08:56	094.A-0575(A)	VIMOS	PRE_J1410-p2	Execution	C	Service
1117750	08:57:15 > 09:05:44	00:08:29	094.A-0575(A)	VIMOS	PRE_J1410-p3	Execution	C	Service

Nighttime Losses

Loss	from > to	Duration	Run ID	Instrument	OB Name	Loss Type	Grade	Mode
Downtime	04:40:23 > 05:04:34	00:24:11		VIMOS		Technical		Service
	Problem moving the M3 to the Nas B focus, see PPRS-059956. 12 Feb 07:24 - Paranal Observatory							
OB 1117744	08:29:32 > 08:42:35	00:13:03	094.A-0575(A)	VIMOS	PRE_J1410-p1	Execution	C	Service
OB 1117747	08:45:01 > 08:53:57	00:08:56	094.A-0575(A)	VIMOS	PRE_J1410-p2	Execution	C	Service

Daytime Calibrations

OB 200155281 | 21:19:05 > 21:47:39 | 00:28:34 | Mode: Service | Loss: No Loss | Status A Grade _

Instrument VIMOS
Name VIMOS Focus Check
Target
PI VIMOS team
Run 60.A-9050(A)
Container -

Public Comments

Files produced and additional information

OBS.ID 200155281
OBS.START 2015-02-11T21:19:05
Template VIMOS_img_tec_FocusCheck
Data Product CALIB/LAMP,AFC/IMAGE
CCD 225kHz,1port,HG,AFC/1x1/2048x400
Lamps Afc

Original Filename	Archive Filename	Grism	Filter	INS.ADF.ID	DET.OUT1.CONAD	EXPTIME
VIMOS_IMG_AFC042_0001_A.2.fits	VIMOS.2015-02-11T21:23:24.748	Free	R		0.55 e-/adu	1.998
VIMOS_IMG_AFC042_0001_A.3.fits	VIMOS.2015-02-11T21:23:24.747	Free	R		0.56 e-/adu	1.998
VIMOS_IMG_AFC042_0001_B.1.fits	VIMOS.2015-02-11T21:23:24.751	Free	R		0.53 e-/adu	1.998
VIMOS_IMG_AFC042_0001_B.4.fits	VIMOS.2015-02-11T21:23:24.752	Free	R		0.54 e-/adu	1.998
VIMOS_IMG_AFC042_0002_A.3.fits	VIMOS.2015-02-11T21:37:40.945	Free	R		0.56 e-/adu	2.003
VIMOS_IMG_AFC042_0002_A.2.fits	VIMOS.2015-02-11T21:37:40.944	Free	R		0.55 e-/adu	2.003
VIMOS_IMG_AFC042_0002_B.1.fits	VIMOS.2015-02-11T21:37:40.951	Free	R		0.53 e-/adu	1.997
VIMOS_IMG_AFC042_0002_B.4.fits	VIMOS.2015-02-11T21:37:40.952	Free	R		0.54 e-/adu	1.997
VIMOS_IMG_AFC042_0003_B.1.fits	VIMOS.2015-02-11T21:38:28.597	Free	R		0.53 e-/adu	1.997
VIMOS_IMG_AFC042_0003_B.4.fits	VIMOS.2015-02-11T21:38:28.598	Free	R		0.54 e-/adu	1.997
VIMOS_IMG_AFC042_0003_A.2.fits	VIMOS.2015-02-11T21:38:28.599	Free	R		0.55 e-/adu	2.003
VIMOS_IMG_AFC042_0003_A.3.fits	VIMOS.2015-02-11T21:38:28.600	Free	R		0.56 e-/adu	2.003
VIMOS_IMG_AFC042_0004_B.1.fits	VIMOS.2015-02-11T21:40:25.050	Free	R		0.53 e-/adu	1.997
VIMOS_IMG_AFC042_0004_B.4.fits	VIMOS.2015-02-11T21:40:25.051	Free	R		0.54 e-/adu	1.997
VIMOS_IMG_AFC042_0004_A.3.fits	VIMOS.2015-02-11T21:40:25.055	Free	R		0.56 e-/adu	2.005
VIMOS_IMG_AFC042_0004_A.2.fits	VIMOS.2015-02-11T21:40:25.054	Free	R		0.55 e-/adu	2.005
VIMOS_IMG_AFC042_0005_A.3.fits	VIMOS.2015-02-11T21:40:56.419	Free	R		0.56 e-/adu	2.003
VIMOS_IMG_AFC042_0005_A.2.fits	VIMOS.2015-02-11T21:40:56.418	Free	R		0.55 e-/adu	2.003
VIMOS_IMG_AFC042_0005_B.4.fits	VIMOS.2015-02-11T21:40:56.425	Free	R		0.54 e-/adu	1.997
VIMOS_IMG_AFC042_0005_B.1.fits	VIMOS.2015-02-11T21:40:56.424	Free	R		0.53 e-/adu	1.997
VIMOS_IMG_AFC042_0006_B.4.fits	VIMOS.2015-02-11T21:41:28.448	Free	R		0.54 e-/adu	1.998
VIMOS_IMG_AFC042_0006_B.1.fits	VIMOS.2015-02-11T21:41:28.449	Free	R		0.53 e-/adu	1.998
VIMOS_IMG_AFC042_0006_A.3.fits	VIMOS.2015-02-11T21:41:28.451	Free	R		0.56 e-/adu	2.003
VIMOS_IMG_AFC042_0006_A.2.fits	VIMOS.2015-02-11T21:41:28.452	Free	R		0.55 e-/adu	2.003
VIMOS_IMG_AFC042_0007_A.2.fits	VIMOS.2015-02-11T21:41:58.385	Free	R		0.55 e-/adu	2.003
VIMOS_IMG_AFC042_0007_A.3.fits	VIMOS.2015-02-11T21:41:58.386	Free	R		0.56 e-/adu	2.003
VIMOS_IMG_AFC042_0007_B.1.fits	VIMOS.2015-02-11T21:41:58.392	Free	R		0.53 e-/adu	1.996
VIMOS_IMG_AFC042_0007_B.4.fits	VIMOS.2015-02-11T21:41:58.393	Free	R		0.54 e-/adu	1.996
VIMOS_IMG_AFC042_0008_A.3.fits	VIMOS.2015-02-11T21:42:28.980	Free	R		0.56 e-/adu	2.002
VIMOS_IMG_AFC042_0008_A.2.fits	VIMOS.2015-02-11T21:42:28.979	Free	R		0.55 e-/adu	2.002
VIMOS_IMG_AFC042_0008_B.1.fits	VIMOS.2015-02-11T21:42:28.985	Free	R		0.53 e-/adu	1.998
VIMOS_IMG_AFC042_0008_B.4.fits	VIMOS.2015-02-11T21:42:28.986	Free	R		0.54 e-/adu	1.998
VIMOS_IMG_AFC042_0009_A.2.fits	VIMOS.2015-02-11T21:42:54.864	Free	R		0.55 e-/adu	2.002
VIMOS_IMG_AFC042_0009_A.3.fits	VIMOS.2015-02-11T21:42:54.863	Free	R		0.56 e-/adu	2.002
VIMOS_IMG_AFC042_0009_B.1.fits	VIMOS.2015-02-11T21:42:54.869	Free	R		0.53 e-/adu	1.998
VIMOS_IMG_AFC042_0009_B.4.fits	VIMOS.2015-02-11T21:42:54.868	Free	R		0.54 e-/adu	1.998
VIMOS_IMG_AFC042_0010_A.2.fits	VIMOS.2015-02-11T21:43:24.397	Free	R		0.55 e-/adu	2.002
VIMOS_IMG_AFC042_0010_A.3.fits	VIMOS.2015-02-11T21:43:24.396	Free	R		0.56 e-/adu	2.002
VIMOS_IMG_AFC042_0010_B.4.fits	VIMOS.2015-02-11T21:43:24.403	Free	R		0.54 e-/adu	1.998
VIMOS_IMG_AFC042_0010_B.1.fits	VIMOS.2015-02-11T21:43:24.402	Free	R		0.53 e-/adu	1.998

OB 200155281 | 21:47:48 > 21:55:45 | 00:07:57 | Mode: Service | Loss: No Loss | Status X > M Grade X

Instrument VIMOS
Name VIMOS Focus Check
Target
PI VIMOS team

Run 60.A-9050(A)

Container -

Public Comments

Files produced and additional information

OBS.ID 200155281

OBS.START 2015-02-11T21:47:48

Template VIMOS_img_tec_FocusCheck

Data Product CALIB/LAMP,AFC/IMAGE

CCD 225kHz,1port,HG,AFC/1x1/2048x400

Lamps Afc

Original Filename	Archive Filename	Grism	Filter	INS.ADF.ID	DET.OUT1.CONAD	EXPTIME
VIMOS_IMG_AFC042_0011_A.2.fits	VIMOS.2015-02-11T21:48:26.373	Free	R		0.55 e-/adu	1.999
VIMOS_IMG_AFC042_0011_A.3.fits	VIMOS.2015-02-11T21:48:26.374	Free	R		0.56 e-/adu	1.999
VIMOS_IMG_AFC042_0011_B.4.fits	VIMOS.2015-02-11T21:48:26.377	Free	R		0.54 e-/adu	1.997
VIMOS_IMG_AFC042_0011_B.1.fits	VIMOS.2015-02-11T21:48:26.378	Free	R		0.53 e-/adu	1.997
VIMOS_IMG_AFC042_0012_A.2.fits	VIMOS.2015-02-11T21:48:56.377	Free	R		0.55 e-/adu	2.0
VIMOS_IMG_AFC042_0012_A.3.fits	VIMOS.2015-02-11T21:48:56.378	Free	R		0.56 e-/adu	2.0
VIMOS_IMG_AFC042_0012_B.4.fits	VIMOS.2015-02-11T21:48:56.381	Free	R		0.54 e-/adu	1.998
VIMOS_IMG_AFC042_0012_B.1.fits	VIMOS.2015-02-11T21:48:56.382	Free	R		0.53 e-/adu	1.998
VIMOS_IMG_AFC042_0013_A.2.fits	VIMOS.2015-02-11T21:49:25.382	Free	R		0.55 e-/adu	2.003
VIMOS_IMG_AFC042_0013_A.3.fits	VIMOS.2015-02-11T21:49:25.381	Free	R		0.56 e-/adu	2.003
VIMOS_IMG_AFC042_0013_B.1.fits	VIMOS.2015-02-11T21:49:25.385	Free	R		0.53 e-/adu	1.998
VIMOS_IMG_AFC042_0013_B.4.fits	VIMOS.2015-02-11T21:49:25.384	Free	R		0.54 e-/adu	1.998

Template VIMOS_img_tec_MaskToCcd

Data Product CALIB/LAMP,OTHER/IMAGE

CCD 225kHz,1port,LG/1x1/2048x2440

Lamps QTH10

Original Filename	Archive Filename	Grism	Filter	INS.ADF.ID	DET.OUT1.CONAD	EXPTIME
VIMOS_IMG_OTHER042_0001_A.2.fits	VIMOS.2015-02-11T21:49:49.694	Free	R	cal_05s_pinhole-2mod2.adp	1.81 e-/adu	1.002
VIMOS_IMG_OTHER042_0001_A.3.fits	VIMOS.2015-02-11T21:49:49.695	Free	R	cal_05s_pinhole-3mod2.adp	1.81 e-/adu	1.002
VIMOS_IMG_OTHER042_0001_B.4.fits	VIMOS.2015-02-11T21:49:49.698	Free	R	cal_05s_pinhole-4mod2.adp	1.79 e-/adu	0.997
VIMOS_IMG_OTHER042_0001_B.1.fits	VIMOS.2015-02-11T21:49:49.697	Free	R	cal_05s_pinhole-1mod2.adp	1.75 e-/adu	0.997

OB 200313600 | 09:29:18 > 11:27:39 | 01:58:21 | Mode: Service | Loss: No Loss | Status X > M Grade X

Instrument SPHERE

Name No name

Target No name

PI SPHERE Team SPHERE team

Run 60.A-9249(A)

Container -

Public Comments

Files produced and additional information

OBS.ID 200313600

OBS.START 2015-02-12T09:29:18

Template SPHERE_zimpol_p_cal_flat

Original Filename	Archive Filename	TPL.EXPNO/NEXP	DPR.TYPE	INS.FILT1.NAME	EXPTIME
SPHERE_ZIMPOL_CAL_FLATPOL043_0001.fits	SPHER.2015-02-12T09:30:02.734	1/1		FLAT,LAMP	2.0
SPHERE_ZIMPOL_CAL_FLATPOL043_0002.fits	SPHER.2015-02-12T09:31:03.659	1/1		FLAT,LAMP	2.0
SPHERE_ZIMPOL_CAL_FLATPOL043_0003.fits	SPHER.2015-02-12T09:34:47.500	1/1		FLAT,LAMP	2.0
SPHERE_ZIMPOL_CAL_FLATPOL043_0004.fits	SPHER.2015-02-12T09:35:49.127	1/1		FLAT,LAMP	2.0
SPHERE_ZIMPOL_CAL_FLATPOL043_0005.fits	SPHER.2015-02-12T09:39:32.001	1/1		FLAT,LAMP	2.0
SPHERE_ZIMPOL_CAL_FLATPOL043_0006.fits	SPHER.2015-02-12T09:40:32.638	1/1		FLAT,LAMP	2.0

Template SPHERE_zimpol_p_cal_modeff

Original Filename	Archive Filename	TPL.EXPNO/NEXP	DPR.TYPE	INS.FILT1.NAME	EXPTIME
SPHERE_ZIMPOL_CAL_MODEM043_0001.fits	SPHER.2015-02-12T09:44:28.621	1/2		FLAT,POL100	2.0
SPHERE_ZIMPOL_CAL_MODEM043_0002.fits	SPHER.2015-02-12T09:45:22.323	2/2		FLAT,POL100	2.0
SPHERE_ZIMPOL_CAL_MODEM043_0003.fits	SPHER.2015-02-12T09:46:52.035	1/2		FLAT,POL100	2.0
SPHERE_ZIMPOL_CAL_MODEM043_0004.fits	SPHER.2015-02-12T09:50:26.782	2/2		FLAT,POL100	2.0

Template SPHERE_zimpol_i_cal_flat

Original Filename	Archive Filename	TPL.EXPNO/NEXP	DPR.TYPE	INS.FILT1.NAME	EXPTIME
SPHERE_ZIMPOL_CAL_FLAT043_0001.fits	SPHER.2015-02-12T09:54:10.007	1/1		FLAT,LAMP	2.0
SPHERE_ZIMPOL_CAL_FLAT043_0002.fits	SPHER.2015-02-12T09:55:13.834	1/1		FLAT,LAMP	2.0
SPHERE_ZIMPOL_CAL_FLAT043_0003.fits	SPHER.2015-02-12T09:56:13.730	1/1		FLAT,LAMP	2.0

Template SPHERE_irdifs_cal_dark

Original Filename	Archive Filename	TPL.EXPNO/NEXP	DPR.TYPE	INS.FILT1.NAME	EXPTIME
SPHERE_IRDIFS_IFS_CAL_DARK043_0001.fits	SPHER.2015-02-12T09:58:40.241	1/2	DARK		64.0
SPHERE_IRDIFS_IRDIS_CAL_DARK043_0001.fits	SPHER.2015-02-12T09:58:41.644	2/2	DARK		64.0
SPHERE_IRDIFS_IFS_CAL_DARK043_0002.fits	SPHER.2015-02-12T10:09:47.248	1/2	DARK		2.0
SPHERE_IRDIFS_IRDIS_CAL_DARK043_0002.fits	SPHER.2015-02-12T10:09:48.173	2/2	DARK		2.0
SPHERE_IRDIFS_IFS_CAL_DARK043_0003.fits	SPHER.2015-02-12T10:10:34.423	1/2	DARK		10.0
SPHERE_IRDIFS_IRDIS_CAL_DARK043_0003.fits	SPHER.2015-02-12T10:10:35.353	2/2	DARK		10.0
SPHERE_IRDIFS_IFS_CAL_DARK043_0004.fits	SPHER.2015-02-12T10:12:41.905	1/2	DARK		32.0
SPHERE_IRDIFS_IRDIS_CAL_DARK043_0004.fits	SPHER.2015-02-12T10:12:42.869	2/2	DARK		32.0
SPHERE_IRDIFS_IFS_CAL_DARK043_0005.fits	SPHER.2015-02-12T10:18:28.779	1/2	DARK		8.0
SPHERE_IRDIFS_IRDIS_CAL_DARK043_0005.fits	SPHER.2015-02-12T10:18:29.708	2/2	DARK		8.0

Template SPHERE_irdifs_cal_background

Original Filename	Archive Filename	TPL.EXPNO/NEXP	DPR.TYPE	INS.FILT1.NAME	EXPTIME
SPHERE_IRDIFS_IFS_CAL_BCKG043_0001.fits	SPHER.2015-02-12T10:20:25.154	1/2	DARK,BACKGROUND		64.0
SPHERE_IRDIFS_IRDIS_CAL_BCKG043_0001.fits	SPHER.2015-02-12T10:20:26.104	2/2	DARK,BACKGROUND		64.0
SPHERE_IRDIFS_IFS_CAL_BCKG043_0002.fits	SPHER.2015-02-12T10:42:30.624	1/2	DARK,BACKGROUND		2.0
SPHERE_IRDIFS_IRDIS_CAL_BCKG043_0002.fits	SPHER.2015-02-12T10:42:31.603	2/2	DARK,BACKGROUND		2.0
SPHERE_IRDIFS_IFS_CAL_BCKG043_0003.fits	SPHER.2015-02-12T10:43:56.196	1/2	DARK,BACKGROUND		10.0
SPHERE_IRDIFS_IRDIS_CAL_BCKG043_0003.fits	SPHER.2015-02-12T10:43:57.163	2/2	DARK,BACKGROUND		10.0
SPHERE_IRDIFS_IFS_CAL_BCKG043_0004.fits	SPHER.2015-02-12T10:48:01.755	1/2	DARK,BACKGROUND		32.0
SPHERE_IRDIFS_IRDIS_CAL_BCKG043_0004.fits	SPHER.2015-02-12T10:48:02.670	2/2	DARK,BACKGROUND		32.0
SPHERE_IRDIFS_IFS_CAL_BCKG043_0005.fits	SPHER.2015-02-12T10:59:28.456	1/2	DARK,BACKGROUND		8.0
SPHERE_IRDIFS_IRDIS_CAL_BCKG043_0005.fits	SPHER.2015-02-12T10:59:29.421	2/2	DARK,BACKGROUND		8.0

Template SPHERE_irdifs_cal_flat

Original Filename	Archive Filename	TPL.EXPNO/NEXP	DPR.TYPE	INS.FILT1.NAME	EXPTIME
SPHERE_IRDIFS_IFS_CAL_FLAT043_0001.fits	SPHER.2015-02-12T11:06:04.183	1/13	FLAT,LAMP		3.0
SPHERE_IRDIFS_IRDIS_CAL_FLAT043_0001.fits	SPHER.2015-02-12T11:06:39.453	2/13	FLAT,LAMP		2.0
SPHERE_IRDIFS_IFS_CAL_FLAT043_0002.fits	SPHER.2015-02-12T11:06:40.733	3/13	FLAT,LAMP		11.0
SPHERE_IRDIFS_IRDIS_CAL_FLAT043_0002.fits	SPHER.2015-02-12T11:07:12.724	4/13	FLAT,LAMP		4.0
SPHERE_IRDIFS_IFS_CAL_FLAT043_0003.fits	SPHER.2015-02-12T11:10:52.502	5/13	FLAT,LAMP		3.0
SPHERE_IRDIFS_IRDIS_CAL_FLAT043_0003.fits	SPHER.2015-02-12T11:10:54.481	6/13	FLAT,LAMP		6.0
SPHERE_IRDIFS_IFS_CAL_FLAT043_0004.fits	SPHER.2015-02-12T11:11:20.852	7/13	FLAT,LAMP		11.0
SPHERE_IRDIFS_IRDIS_CAL_FLAT043_0004.fits	SPHER.2015-02-12T11:12:08.725	8/13	FLAT,LAMP		8.0
SPHERE_IRDIFS_IFS_CAL_FLAT043_0005.fits	SPHER.2015-02-12T11:15:31.474	9/13	FLAT,LAMP		5.0
SPHERE_IRDIFS_IRDIS_CAL_FLAT043_0005.fits	SPHER.2015-02-12T11:15:33.350	10/13	FLAT,LAMP		10.0
SPHERE_IRDIFS_IFS_CAL_FLAT043_0006.fits	SPHER.2015-02-12T11:16:09.841	11/13	FLAT,LAMP		25.0
SPHERE_IRDIFS_IFS_CAL_FLAT043_0007.fits	SPHER.2015-02-12T11:21:29.650	12/13	FLAT,LAMP		2.0
SPHERE_IRDIFS_IFS_CAL_FLAT043_0008.fits	SPHER.2015-02-12T11:21:54.049	13/13	FLAT,LAMP		10.0

Template SPHERE_irdifs_cal_ifsflat

Original Filename	Archive Filename	TPL.EXPNO/NEXP	DPR.TYPE	INS.FILT1.NAME	EXPTIME
SPHERE_IRDIFS_IFS_CAL_IFSFLAT043_0001.fits	SPHER.2015-02-12T11:23:36.204	1/1	FLAT,LAMP		1.66

Template SPHERE_irdifs_cal_wave

Original Filename	Archive Filename	TPL.EXPNO/NEXP	DPR.TYPE	INS.FILT1.NAME	EXPTIME
SPHERE_IRDIFS_IFS_CAL_WAVE043_0001.fits	SPHER.2015-02-12T11:24:24.412	1/1	WAVE,LAMP		1.66

Template SPHERE_irdifs_cal_specpos

Original Filename	Archive Filename	TPL.EXPNO/NEXP	DPR.TYPE	INS.FILT1.NAME	EXPTIME
SPHERE_IRDIFS_IFS_CAL_IFSFLAT043_0002.fits	SPHER.2015-02-12T11:24:59.689	1/1	SPECPOS,LAMP		1.66

Template SPHERE_irdifs_cal_distmap

Original Filename	Archive Filename	TPL.EXPNO/NEXP	DPR.TYPE	INS.FILT1.NAME	EXPTIME
SPHERE_IRDIFS_IFS_CAL_DISTMAP043_0001.fits	SPHER.2015-02-12T11:25:48.569	1/4	LAMP,DISTORT		8.0
SPHERE_IRDIFS_IRDIS_CAL_DISTMAP043_0001.fits	SPHER.2015-02-12T11:25:49.201	2/4	LAMP,DISTORT		2.0
SPHERE_IRDIFS_IFS_CAL_DISTMAP043_0002.fits	SPHER.2015-02-12T11:26:35.549	1/4	LAMP,DISTORT		8.0
SPHERE_IRDIFS_IRDIS_CAL_DISTMAP043_0002.fits	SPHER.2015-02-12T11:26:36.203	2/4	LAMP,DISTORT		2.0

OB 200127566 | 09:29:25 > 14:40:34 | 05:11:09 | Mode: Service | Loss: No Loss | Status X > M Grade X

Instrument VIMOS
Name Calibrations
Target
PI VIMOS team
Run 60.A-9050(A)
Container -
Public Comments

Files produced and additional information**OBS.ID** 200127566**OBS.START** 2015-02-12T09:29:25**Template** VIMOS_img_cal_Dark**Data Product** CALIB/BIAS/IMAGE**CCD** 225kHz,1port,LG/1x1/2048x2440**Lamps**

Original Filename	Archive Filename	Filter	DET.OUT1.CONAD	EXPTIME
VIMOS_IMG_BIAS043_0001_B.1.fits	VIMOS.2015-02-12T09:29:33.638	R	1.75 e-/adu	0.0
VIMOS_IMG_BIAS043_0001_B.4.fits	VIMOS.2015-02-12T09:29:33.639	R	1.79 e-/adu	0.0
VIMOS_IMG_BIAS043_0001_A.2.fits	VIMOS.2015-02-12T09:29:33.653	R	1.81 e-/adu	0.0
VIMOS_IMG_BIAS043_0001_A.3.fits	VIMOS.2015-02-12T09:29:33.652	R	1.81 e-/adu	0.0
VIMOS_IMG_BIAS043_0002_A.3.fits	VIMOS.2015-02-12T09:30:11.106	R	1.81 e-/adu	0.0
VIMOS_IMG_BIAS043_0002_A.2.fits	VIMOS.2015-02-12T09:30:11.107	R	1.81 e-/adu	0.0
VIMOS_IMG_BIAS043_0002_B.1.fits	VIMOS.2015-02-12T09:30:11.112	R	1.75 e-/adu	0.0
VIMOS_IMG_BIAS043_0002_B.4.fits	VIMOS.2015-02-12T09:30:11.113	R	1.79 e-/adu	0.0
VIMOS_IMG_BIAS043_0003_A.3.fits	VIMOS.2015-02-12T09:30:48.112	R	1.81 e-/adu	0.0
VIMOS_IMG_BIAS043_0003_A.2.fits	VIMOS.2015-02-12T09:30:48.113	R	1.81 e-/adu	0.0
VIMOS_IMG_BIAS043_0003_B.4.fits	VIMOS.2015-02-12T09:30:48.118	R	1.79 e-/adu	0.0
VIMOS_IMG_BIAS043_0003_B.1.fits	VIMOS.2015-02-12T09:30:48.117	R	1.75 e-/adu	0.0
VIMOS_IMG_BIAS043_0004_A.2.fits	VIMOS.2015-02-12T09:31:25.116	R	1.81 e-/adu	0.0
VIMOS_IMG_BIAS043_0004_A.3.fits	VIMOS.2015-02-12T09:31:25.117	R	1.81 e-/adu	0.0
VIMOS_IMG_BIAS043_0004_B.4.fits	VIMOS.2015-02-12T09:31:25.121	R	1.79 e-/adu	0.0
VIMOS_IMG_BIAS043_0004_B.1.fits	VIMOS.2015-02-12T09:31:25.122	R	1.75 e-/adu	0.0
VIMOS_IMG_BIAS043_0005_A.2.fits	VIMOS.2015-02-12T09:32:02.111	R	1.81 e-/adu	0.0
VIMOS_IMG_BIAS043_0005_A.3.fits	VIMOS.2015-02-12T09:32:02.110	R	1.81 e-/adu	0.0
VIMOS_IMG_BIAS043_0005_B.1.fits	VIMOS.2015-02-12T09:32:02.116	R	1.75 e-/adu	0.0
VIMOS_IMG_BIAS043_0005_B.4.fits	VIMOS.2015-02-12T09:32:02.115	R	1.79 e-/adu	0.0

Template VIMOS_spec_cal_Dark**Data Product** CALIB/BIAS/IMAGE**CCD** 225kHz,1port,HG/1x1/2048x4096**Lamps**

Original Filename	Archive Filename	Grism	Filter	INS.ADF.ID	DET.OUT1.CONAD	EXPTIME
VIMOS_SPEC_BIAS043_0001_A.2.fits	VIMOS.2015-02-12T09:32:53.136	Free	R		0.6 e-/adu	0.0
VIMOS_SPEC_BIAS043_0001_A.3.fits	VIMOS.2015-02-12T09:32:53.137	Free	R		0.56 e-/adu	0.0
VIMOS_SPEC_BIAS043_0001_B.1.fits	VIMOS.2015-02-12T09:32:53.142	Free	R		0.55 e-/adu	0.0
VIMOS_SPEC_BIAS043_0001_B.4.fits	VIMOS.2015-02-12T09:32:53.141	Free	R		0.57 e-/adu	0.0
VIMOS_SPEC_BIAS043_0002_A.3.fits	VIMOS.2015-02-12T09:33:44.172	Free	R		0.56 e-/adu	0.0
VIMOS_SPEC_BIAS043_0002_A.2.fits	VIMOS.2015-02-12T09:33:44.173	Free	R		0.6 e-/adu	0.0
VIMOS_SPEC_BIAS043_0002_B.1.fits	VIMOS.2015-02-12T09:33:44.177	Free	R		0.55 e-/adu	0.0
VIMOS_SPEC_BIAS043_0002_B.4.fits	VIMOS.2015-02-12T09:33:44.178	Free	R		0.57 e-/adu	0.0
VIMOS_SPEC_BIAS043_0003_A.2.fits	VIMOS.2015-02-12T09:34:35.148	Free	R		0.6 e-/adu	0.0
VIMOS_SPEC_BIAS043_0003_A.3.fits	VIMOS.2015-02-12T09:34:35.149	Free	R		0.56 e-/adu	0.0
VIMOS_SPEC_BIAS043_0003_B.4.fits	VIMOS.2015-02-12T09:34:35.154	Free	R		0.57 e-/adu	0.0
VIMOS_SPEC_BIAS043_0003_B.1.fits	VIMOS.2015-02-12T09:34:35.153	Free	R		0.55 e-/adu	0.0
VIMOS_SPEC_BIAS043_0004_A.2.fits	VIMOS.2015-02-12T09:35:26.156	Free	R		0.6 e-/adu	0.0
VIMOS_SPEC_BIAS043_0004_A.3.fits	VIMOS.2015-02-12T09:35:26.155	Free	R		0.56 e-/adu	0.0
VIMOS_SPEC_BIAS043_0004_B.1.fits	VIMOS.2015-02-12T09:35:26.160	Free	R		0.55 e-/adu	0.0
VIMOS_SPEC_BIAS043_0004_B.4.fits	VIMOS.2015-02-12T09:35:26.159	Free	R		0.57 e-/adu	0.0
VIMOS_SPEC_BIAS043_0005_A.2.fits	VIMOS.2015-02-12T09:36:17.182	Free	R		0.6 e-/adu	0.0
VIMOS_SPEC_BIAS043_0005_A.3.fits	VIMOS.2015-02-12T09:36:17.181	Free	R		0.56 e-/adu	0.0
VIMOS_SPEC_BIAS043_0005_B.1.fits	VIMOS.2015-02-12T09:36:17.186	Free	R		0.55 e-/adu	0.0
VIMOS_SPEC_BIAS043_0005_B.4.fits	VIMOS.2015-02-12T09:36:17.185	Free	R		0.57 e-/adu	0.0

Template VIMOS_img_tec_Focus_Pinhole**Data Product** CALIB/FOCUS/MOS**CCD** 625kHz,1port,LGCenter/1x1/2048x2440**Lamps** QTH10 / Afc

Original Filename	Archive Filename	Grism	Filter	INS.ADF.ID	DET.OUT1.CONAD	EXPTIME
VIMOS_MOS_FOCUS043_0001_B.1.fits	VIMOS.2015-02-12T10:03:07.131	Free	R		1.9 e-/adu	0.996
VIMOS_MOS_FOCUS043_0001_B.4.fits	VIMOS.2015-02-12T10:03:07.132	Free	R		1.9 e-/adu	0.996
VIMOS_MOS_FOCUS043_0001_A.2.fits	VIMOS.2015-02-12T10:03:07.136	Free	R		1.9 e-/adu	1.003
VIMOS_MOS_FOCUS043_0001_A.3.fits	VIMOS.2015-02-12T10:03:07.137	Free	R		1.9 e-/adu	1.003
VIMOS_MOS_FOCUS043_0002_A.2.fits	VIMOS.2015-02-12T10:04:04.823	Free	R		1.9 e-/adu	1.003
VIMOS_MOS_FOCUS043_0002_A.3.fits	VIMOS.2015-02-12T10:04:04.824	Free	R		1.9 e-/adu	1.003
VIMOS_MOS_FOCUS043_0002_B.4.fits	VIMOS.2015-02-12T10:04:04.828	Free	R		1.9 e-/adu	0.997

VIMOS_MOS_FOCUS043_0019_A.2.fits	VIMOS.2015-02-12T10:24:11.820	Free	OS-red	1.9 e-/adu	1.003
VIMOS_MOS_FOCUS043_0019_A.3.fits	VIMOS.2015-02-12T10:24:11.821	Free	OS-red	1.9 e-/adu	1.003
VIMOS_MOS_FOCUS043_0020_B.1.fits	VIMOS.2015-02-12T10:25:04.834	Free	OS-red	1.9 e-/adu	0.997
VIMOS_MOS_FOCUS043_0020_B.4.fits	VIMOS.2015-02-12T10:25:04.833	Free	OS-red	1.9 e-/adu	0.997
VIMOS_MOS_FOCUS043_0020_A.3.fits	VIMOS.2015-02-12T10:25:04.837	Free	OS-red	1.9 e-/adu	0.999
VIMOS_MOS_FOCUS043_0020_A.2.fits	VIMOS.2015-02-12T10:25:04.838	Free	OS-red	1.9 e-/adu	0.999
VIMOS_MOS_FOCUS043_0021_B.4.fits	VIMOS.2015-02-12T10:25:59.820	Free	OS-red	1.9 e-/adu	0.997
VIMOS_MOS_FOCUS043_0021_B.1.fits	VIMOS.2015-02-12T10:25:59.821	Free	OS-red	1.9 e-/adu	0.997
VIMOS_MOS_FOCUS043_0021_A.2.fits	VIMOS.2015-02-12T10:25:59.825	Free	OS-red	1.9 e-/adu	1.007
VIMOS_MOS_FOCUS043_0021_A.3.fits	VIMOS.2015-02-12T10:25:59.824	Free	OS-red	1.9 e-/adu	1.007
VIMOS_MOS_FOCUS043_0022_B.1.fits	VIMOS.2015-02-12T10:29:26.444	Free	R	1.9 e-/adu	0.996
VIMOS_MOS_FOCUS043_0022_B.4.fits	VIMOS.2015-02-12T10:29:26.445	Free	R	1.9 e-/adu	0.996
VIMOS_MOS_FOCUS043_0022_A.3.fits	VIMOS.2015-02-12T10:29:26.448	Free	R	1.9 e-/adu	0.999
VIMOS_MOS_FOCUS043_0022_A.2.fits	VIMOS.2015-02-12T10:29:26.449	Free	R	1.9 e-/adu	0.999
VIMOS_MOS_FOCUS043_0023_A.3.fits	VIMOS.2015-02-12T10:30:19.816	Free	R	1.9 e-/adu	0.999
VIMOS_MOS_FOCUS043_0023_A.2.fits	VIMOS.2015-02-12T10:30:19.815	Free	R	1.9 e-/adu	0.999
VIMOS_MOS_FOCUS043_0023_B.1.fits	VIMOS.2015-02-12T10:30:19.821	Free	R	1.9 e-/adu	0.996
VIMOS_MOS_FOCUS043_0023_B.4.fits	VIMOS.2015-02-12T10:30:19.820	Free	R	1.9 e-/adu	0.996
VIMOS_MOS_FOCUS043_0024_B.4.fits	VIMOS.2015-02-12T10:31:13.826	Free	R	1.9 e-/adu	0.997
VIMOS_MOS_FOCUS043_0024_B.1.fits	VIMOS.2015-02-12T10:31:13.827	Free	R	1.9 e-/adu	0.997
VIMOS_MOS_FOCUS043_0024_A.3.fits	VIMOS.2015-02-12T10:31:13.831	Free	R	1.9 e-/adu	1.002
VIMOS_MOS_FOCUS043_0024_A.2.fits	VIMOS.2015-02-12T10:31:13.832	Free	R	1.9 e-/adu	1.002
VIMOS_MOS_FOCUS043_0025_B.1.fits	VIMOS.2015-02-12T10:32:08.472	Free	R	1.9 e-/adu	0.998
VIMOS_MOS_FOCUS043_0025_B.4.fits	VIMOS.2015-02-12T10:32:08.473	Free	R	1.9 e-/adu	0.998
VIMOS_MOS_FOCUS043_0025_A.3.fits	VIMOS.2015-02-12T10:32:08.480	Free	R	1.9 e-/adu	0.999
VIMOS_MOS_FOCUS043_0025_A.2.fits	VIMOS.2015-02-12T10:32:08.479	Free	R	1.9 e-/adu	0.999
VIMOS_MOS_FOCUS043_0026_A.2.fits	VIMOS.2015-02-12T10:33:02.016	Free	R	1.9 e-/adu	0.999
VIMOS_MOS_FOCUS043_0026_A.3.fits	VIMOS.2015-02-12T10:33:02.015	Free	R	1.9 e-/adu	0.999
VIMOS_MOS_FOCUS043_0026_B.1.fits	VIMOS.2015-02-12T10:33:02.019	Free	R	1.9 e-/adu	0.997
VIMOS_MOS_FOCUS043_0026_B.4.fits	VIMOS.2015-02-12T10:33:02.020	Free	R	1.9 e-/adu	0.997
VIMOS_MOS_FOCUS043_0027_A.3.fits	VIMOS.2015-02-12T10:33:55.883	Free	R	1.9 e-/adu	1.007
VIMOS_MOS_FOCUS043_0027_A.2.fits	VIMOS.2015-02-12T10:33:55.882	Free	R	1.9 e-/adu	1.007
VIMOS_MOS_FOCUS043_0027_B.1.fits	VIMOS.2015-02-12T10:33:55.886	Free	R	1.9 e-/adu	0.998
VIMOS_MOS_FOCUS043_0027_B.4.fits	VIMOS.2015-02-12T10:33:55.885	Free	R	1.9 e-/adu	0.998
VIMOS_MOS_FOCUS043_0028_B.4.fits	VIMOS.2015-02-12T10:34:49.822	Free	R	1.9 e-/adu	0.998
VIMOS_MOS_FOCUS043_0028_B.1.fits	VIMOS.2015-02-12T10:34:49.823	Free	R	1.9 e-/adu	0.998
VIMOS_MOS_FOCUS043_0028_A.2.fits	VIMOS.2015-02-12T10:34:49.848	Free	R	1.9 e-/adu	0.999
VIMOS_MOS_FOCUS043_0028_A.3.fits	VIMOS.2015-02-12T10:34:49.849	Free	R	1.9 e-/adu	0.999

Template VIMOS_img_cal_ScreenFlat

Data Product CALIB/FLAT,LAMP/IMAGE

CCD 225kHz,1port,LG/1x1/2048x2440

Lamps QTH10

Original Filename	Archive Filename	Filter	DET.OUT1.CONAD	EXPTIME
VIMOS_IMG_LAMP043_0001_A.3.fits	VIMOS.2015-02-12T10:38:49.538	R	1.81 e-/adu	0.999
VIMOS_IMG_LAMP043_0001_A.2.fits	VIMOS.2015-02-12T10:38:49.537	R	1.81 e-/adu	0.999
VIMOS_IMG_LAMP043_0001_B.1.fits	VIMOS.2015-02-12T10:38:49.540	R	1.75 e-/adu	0.997
VIMOS_IMG_LAMP043_0001_B.4.fits	VIMOS.2015-02-12T10:38:49.541	R	1.79 e-/adu	0.997
VIMOS_IMG_LAMP043_0002_A.2.fits	VIMOS.2015-02-12T10:39:48.156	R	1.81 e-/adu	1.003
VIMOS_IMG_LAMP043_0002_A.3.fits	VIMOS.2015-02-12T10:39:48.155	R	1.81 e-/adu	1.003
VIMOS_IMG_LAMP043_0002_B.1.fits	VIMOS.2015-02-12T10:39:48.158	R	1.75 e-/adu	0.996
VIMOS_IMG_LAMP043_0002_B.4.fits	VIMOS.2015-02-12T10:39:48.157	R	1.79 e-/adu	0.996
VIMOS_IMG_LAMP043_0003_A.3.fits	VIMOS.2015-02-12T10:40:46.142	R	1.81 e-/adu	0.999
VIMOS_IMG_LAMP043_0003_A.2.fits	VIMOS.2015-02-12T10:40:46.145	R	1.81 e-/adu	0.999
VIMOS_IMG_LAMP043_0003_B.4.fits	VIMOS.2015-02-12T10:40:46.144	R	1.79 e-/adu	0.997
VIMOS_IMG_LAMP043_0003_B.1.fits	VIMOS.2015-02-12T10:40:46.143	R	1.75 e-/adu	0.997
VIMOS_IMG_LAMP043_0004_A.2.fits	VIMOS.2015-02-12T10:41:44.162	R	1.81 e-/adu	0.999
VIMOS_IMG_LAMP043_0004_A.3.fits	VIMOS.2015-02-12T10:41:44.159	R	1.81 e-/adu	0.999
VIMOS_IMG_LAMP043_0004_B.4.fits	VIMOS.2015-02-12T10:41:44.161	R	1.79 e-/adu	0.997
VIMOS_IMG_LAMP043_0004_B.1.fits	VIMOS.2015-02-12T10:41:44.160	R	1.75 e-/adu	0.997
VIMOS_IMG_LAMP043_0005_A.3.fits	VIMOS.2015-02-12T10:42:42.146	R	1.81 e-/adu	0.999
VIMOS_IMG_LAMP043_0005_A.2.fits	VIMOS.2015-02-12T10:42:42.147	R	1.81 e-/adu	0.999
VIMOS_IMG_LAMP043_0005_B.4.fits	VIMOS.2015-02-12T10:42:42.149	R	1.79 e-/adu	0.998
VIMOS_IMG_LAMP043_0005_B.1.fits	VIMOS.2015-02-12T10:42:42.148	R	1.75 e-/adu	0.998

Template VIMOS_mos_cal_DayCalib

Data Product CALIB/LAMP,AFC/IMAGE

CCD 225kHz,1port,HG,AFC/1x1/2048x400

Lamps Afc

Original Filename	Archive Filename	Grism	Filter	INS.ADF.ID	DET.OUT1.CONAD	EXPTIME
VIMOS_IMG_AFC043_0001_B.1.fits	VIMOS.2015-02-12T10:47:11.809	Free	R		0.53 e-/adu	1.996
VIMOS_IMG_AFC043_0001_B.4.fits	VIMOS.2015-02-12T10:47:11.808	Free	R		0.54 e-/adu	1.996
VIMOS_IMG_AFC043_0001_A.2.fits	VIMOS.2015-02-12T10:47:11.810	Free	R		0.55 e-/adu	1.999
VIMOS_IMG_AFC043_0001_A.3.fits	VIMOS.2015-02-12T10:47:11.811	Free	R		0.56 e-/adu	1.999
VIMOS_IMG_AFC043_0002_B.4.fits	VIMOS.2015-02-12T11:10:18.482	Free	R		0.54 e-/adu	1.997
VIMOS_IMG_AFC043_0002_B.1.fits	VIMOS.2015-02-12T11:10:18.481	Free	R		0.53 e-/adu	1.997
VIMOS_IMG_AFC043_0002_A.3.fits	VIMOS.2015-02-12T11:10:18.479	Free	R		0.56 e-/adu	2.006
VIMOS_IMG_AFC043_0002_A.2.fits	VIMOS.2015-02-12T11:10:18.480	Free	R		0.55 e-/adu	2.006
VIMOS_IMG_AFC043_0003_A.2.fits	VIMOS.2015-02-12T11:10:48.436	Free	R		0.55 e-/adu	2.002
VIMOS_IMG_AFC043_0003_A.3.fits	VIMOS.2015-02-12T11:10:48.435	Free	R		0.56 e-/adu	2.002
VIMOS_IMG_AFC043_0003_B.4.fits	VIMOS.2015-02-12T11:10:48.434	Free	R		0.54 e-/adu	1.997
VIMOS_IMG_AFC043_0003_B.1.fits	VIMOS.2015-02-12T11:10:48.433	Free	R		0.53 e-/adu	1.997
VIMOS_IMG_AFC043_0004_A.2.fits	VIMOS.2015-02-12T11:29:23.941	Free	R	P4bQ2_final_vm_MR_M1Q2.adp	0.55 e-/adu	2.0
VIMOS_IMG_AFC043_0004_A.3.fits	VIMOS.2015-02-12T11:29:23.940	Free	R	P4bQ3_final_vm_MR_M1Q3.adp	0.56 e-/adu	2.0
VIMOS_IMG_AFC043_0004_B.4.fits	VIMOS.2015-02-12T11:29:23.943	Free	R	P4bQ4_final_vm_MR_M1Q4.adp	0.54 e-/adu	1.997
VIMOS_IMG_AFC043_0004_B.1.fits	VIMOS.2015-02-12T11:29:23.944	Free	R	P4bQ1_final_vm_MR_M1Q1.adp	0.53 e-/adu	1.997
VIMOS_IMG_AFC043_0005_A.2.fits	VIMOS.2015-02-12T11:29:52.433	Free	R	P4bQ2_final_vm_MR_M1Q2.adp	0.55 e-/adu	1.999
VIMOS_IMG_AFC043_0005_A.3.fits	VIMOS.2015-02-12T11:29:52.434	Free	R	P4bQ3_final_vm_MR_M1Q3.adp	0.56 e-/adu	1.999
VIMOS_IMG_AFC043_0005_B.1.fits	VIMOS.2015-02-12T11:29:52.438	Free	R	P4bQ1_final_vm_MR_M1Q1.adp	0.53 e-/adu	1.996
VIMOS_IMG_AFC043_0005_B.4.fits	VIMOS.2015-02-12T11:29:52.437	Free	R	P4bQ4_final_vm_MR_M1Q4.adp	0.54 e-/adu	1.996
VIMOS_IMG_AFC043_0006_B.1.fits	VIMOS.2015-02-12T11:48:24.607	Free	R	VCC1154_SQ1_contributed_vm_MR_	0.53 e-/adu	1.995
VIMOS_IMG_AFC043_0006_B.4.fits	VIMOS.2015-02-12T11:48:24.608	Free	R	VCC1154_SQ4_contributed_vm_MR_	0.54 e-/adu	1.995
VIMOS_IMG_AFC043_0006_A.2.fits	VIMOS.2015-02-12T11:48:24.610	Free	R	VCC1154_SQ2_contributed_vm_MR_	0.55 e-/adu	1.999
VIMOS_IMG_AFC043_0006_A.3.fits	VIMOS.2015-02-12T11:48:24.611	Free	R	VCC1154_SQ3_contributed_vm_MR_	0.56 e-/adu	1.999
VIMOS_IMG_AFC043_0007_A.2.fits	VIMOS.2015-02-12T11:58:02.832	Free	R	VCC1154_SQ2_contributed_vm_MR_	0.55 e-/adu	1.999
VIMOS_IMG_AFC043_0007_A.3.fits	VIMOS.2015-02-12T11:58:02.831	Free	R	VCC1154_SQ3_contributed_vm_MR_	0.56 e-/adu	1.999
VIMOS_IMG_AFC043_0007_B.4.fits	VIMOS.2015-02-12T11:58:02.836	Free	R	VCC1154_SQ4_contributed_vm_MR_	0.54 e-/adu	1.995
VIMOS_IMG_AFC043_0007_B.1.fits	VIMOS.2015-02-12T11:58:02.835	Free	R	VCC1154_SQ1_contributed_vm_MR_	0.53 e-/adu	1.995
VIMOS_IMG_AFC043_0008_A.2.fits	VIMOS.2015-02-12T11:58:32.415	Free	R	VCC1154_SQ2_contributed_vm_MR_	0.55 e-/adu	1.999
VIMOS_IMG_AFC043_0008_A.3.fits	VIMOS.2015-02-12T11:58:32.416	Free	R	VCC1154_SQ3_contributed_vm_MR_	0.56 e-/adu	1.999
VIMOS_IMG_AFC043_0008_B.1.fits	VIMOS.2015-02-12T11:58:32.418	Free	R	VCC1154_SQ1_contributed_vm_MR_	0.53 e-/adu	1.996
VIMOS_IMG_AFC043_0008_B.4.fits	VIMOS.2015-02-12T11:58:32.419	Free	R	VCC1154_SQ4_contributed_vm_MR_	0.54 e-/adu	1.996
VIMOS_IMG_AFC043_0009_A.2.fits	VIMOS.2015-02-12T12:10:17.532	Free	R	Cal_mos_flux-2mod6.adp	0.55 e-/adu	1.999
VIMOS_IMG_AFC043_0009_A.3.fits	VIMOS.2015-02-12T12:10:17.533	Free	R	Cal_mos_flux-3mod6.adp	0.56 e-/adu	1.999
VIMOS_IMG_AFC043_0009_B.1.fits	VIMOS.2015-02-12T12:10:17.541	Free	R	Cal_mos_flux-1mod6.adp	0.53 e-/adu	1.997
VIMOS_IMG_AFC043_0009_B.4.fits	VIMOS.2015-02-12T12:10:17.542	Free	R	Cal_mos_flux-4mod6.adp	0.54 e-/adu	1.997
VIMOS_IMG_AFC043_0010_B.4.fits	VIMOS.2015-02-12T12:10:47.414	Free	R	Cal_mos_flux-4mod6.adp	0.54 e-/adu	1.997
VIMOS_IMG_AFC043_0010_B.1.fits	VIMOS.2015-02-12T12:10:47.415	Free	R	Cal_mos_flux-1mod6.adp	0.53 e-/adu	1.997
VIMOS_IMG_AFC043_0010_A.2.fits	VIMOS.2015-02-12T12:10:47.416	Free	R	Cal_mos_flux-2mod6.adp	0.55 e-/adu	2.002
VIMOS_IMG_AFC043_0010_A.3.fits	VIMOS.2015-02-12T12:10:47.417	Free	R	Cal_mos_flux-3mod6.adp	0.56 e-/adu	2.002
VIMOS_IMG_AFC043_0011_A.3.fits	VIMOS.2015-02-12T12:20:52.551	Free	R	Cal_mos_flux-3mod6.adp	0.56 e-/adu	2.002
VIMOS_IMG_AFC043_0011_A.2.fits	VIMOS.2015-02-12T12:20:52.550	Free	R	Cal_mos_flux-2mod6.adp	0.55 e-/adu	2.002
VIMOS_IMG_AFC043_0011_B.1.fits	VIMOS.2015-02-12T12:20:52.555	Free	R	Cal_mos_flux-1mod6.adp	0.53 e-/adu	1.997
VIMOS_IMG_AFC043_0011_B.4.fits	VIMOS.2015-02-12T12:20:52.556	Free	R	Cal_mos_flux-4mod6.adp	0.54 e-/adu	1.997
VIMOS_IMG_AFC043_0012_A.2.fits	VIMOS.2015-02-12T12:25:50.858	Free	R	Cal_mos_flux-2mod6.adp	0.55 e-/adu	2.0
VIMOS_IMG_AFC043_0012_A.3.fits	VIMOS.2015-02-12T12:25:50.859	Free	R	Cal_mos_flux-3mod6.adp	0.56 e-/adu	2.0
VIMOS_IMG_AFC043_0012_B.1.fits	VIMOS.2015-02-12T12:25:50.861	Free	R	Cal_mos_flux-1mod6.adp	0.53 e-/adu	1.997
VIMOS_IMG_AFC043_0012_B.4.fits	VIMOS.2015-02-12T12:25:50.860	Free	R	Cal_mos_flux-4mod6.adp	0.54 e-/adu	1.997
VIMOS_IMG_AFC043_0013_B.1.fits	VIMOS.2015-02-12T12:26:16.544	Free	R	Cal_mos_flux-1mod6.adp	0.53 e-/adu	1.997
VIMOS_IMG_AFC043_0013_B.4.fits	VIMOS.2015-02-12T12:26:16.543	Free	R	Cal_mos_flux-4mod6.adp	0.54 e-/adu	1.997
VIMOS_IMG_AFC043_0013_A.3.fits	VIMOS.2015-02-12T12:26:16.551	Free	R	Cal_mos_flux-3mod6.adp	0.56 e-/adu	2.0
VIMOS_IMG_AFC043_0013_A.2.fits	VIMOS.2015-02-12T12:26:16.550	Free	R	Cal_mos_flux-2mod6.adp	0.55 e-/adu	2.0
VIMOS_IMG_AFC043_0014_A.3.fits	VIMOS.2015-02-12T12:26:57.377	Free	R	Cal_mos_flux-3mod6.adp	0.56 e-/adu	2.002
VIMOS_IMG_AFC043_0014_A.2.fits	VIMOS.2015-02-12T12:26:57.376	Free	R	Cal_mos_flux-2mod6.adp	0.55 e-/adu	2.002
VIMOS_IMG_AFC043_0014_B.1.fits	VIMOS.2015-02-12T12:26:57.378	Free	R	Cal_mos_flux-1mod6.adp	0.53 e-/adu	1.996
VIMOS_IMG_AFC043_0014_B.4.fits	VIMOS.2015-02-12T12:26:57.379	Free	R	Cal_mos_flux-4mod6.adp	0.54 e-/adu	1.996
VIMOS_IMG_AFC043_0015_A.2.fits	VIMOS.2015-02-12T12:27:26.460	Free	R	Cal_mos_flux-2mod6.adp	0.55 e-/adu	1.997
VIMOS_IMG_AFC043_0015_A.3.fits	VIMOS.2015-02-12T12:27:26.459	Free	R	Cal_mos_flux-3mod6.adp	0.56 e-/adu	1.997
VIMOS_IMG_AFC043_0015_B.1.fits	VIMOS.2015-02-12T12:27:26.462	Free	R	Cal_mos_flux-1mod6.adp	0.53 e-/adu	1.996
VIMOS_IMG_AFC043_0015_B.4.fits	VIMOS.2015-02-12T12:27:26.461	Free	R	Cal_mos_flux-4mod6.adp	0.54 e-/adu	1.996
VIMOS_IMG_AFC043_0016_B.4.fits	VIMOS.2015-02-12T12:38:19.248	Free	R	Cal_mos_flux-4mod6.adp	0.54 e-/adu	1.997
VIMOS_IMG_AFC043_0016_B.1.fits	VIMOS.2015-02-12T12:38:19.249	Free	R	Cal_mos_flux-1mod6.adp	0.53 e-/adu	1.997
VIMOS_IMG_AFC043_0016_A.2.fits	VIMOS.2015-02-12T12:38:19.250	Free	R	Cal_mos_flux-2mod6.adp	0.55 e-/adu	2.0
VIMOS_IMG_AFC043_0016_A.3.fits	VIMOS.2015-02-12T12:38:19.251	Free	R	Cal_mos_flux-3mod6.adp	0.56 e-/adu	2.0
VIMOS_IMG_AFC043_0017_B.1.fits	VIMOS.2015-02-12T12:38:48.521	Free	R	Cal_mos_flux-1mod6.adp	0.53 e-/adu	1.998

VIMOS_IMG_AFC043_0017_B.4.fits	VIMOS.2015-02-12T12:38:48.522	Free	R	Cal_mos_flux-4mod6.adp	0.54 e-/adu	1.998
VIMOS_IMG_AFC043_0017_A.3.fits	VIMOS.2015-02-12T12:38:48.524	Free	R	Cal_mos_flux-3mod6.adp	0.56 e-/adu	2.001
VIMOS_IMG_AFC043_0017_A.2.fits	VIMOS.2015-02-12T12:38:48.525	Free	R	Cal_mos_flux-2mod6.adp	0.55 e-/adu	2.001
VIMOS_IMG_AFC043_0018_A.3.fits	VIMOS.2015-02-12T12:51:27.769	Free	R	Cal_mos_flux-3mod6.adp	0.56 e-/adu	2.006
VIMOS_IMG_AFC043_0018_A.2.fits	VIMOS.2015-02-12T12:51:27.768	Free	R	Cal_mos_flux-2mod6.adp	0.55 e-/adu	2.006
VIMOS_IMG_AFC043_0018_B.1.fits	VIMOS.2015-02-12T12:51:27.770	Free	R	Cal_mos_flux-1mod6.adp	0.53 e-/adu	1.997
VIMOS_IMG_AFC043_0018_B.4.fits	VIMOS.2015-02-12T12:51:27.771	Free	R	Cal_mos_flux-4mod6.adp	0.54 e-/adu	1.997
VIMOS_IMG_AFC043_0019_B.4.fits	VIMOS.2015-02-12T13:04:32.954	Free	R	Cal_mos_flux-4mod6.adp	0.54 e-/adu	1.996
VIMOS_IMG_AFC043_0019_B.1.fits	VIMOS.2015-02-12T13:04:32.953	Free	R	Cal_mos_flux-1mod6.adp	0.53 e-/adu	1.996
VIMOS_IMG_AFC043_0019_A.3.fits	VIMOS.2015-02-12T13:04:32.956	Free	R	Cal_mos_flux-3mod6.adp	0.56 e-/adu	2.002
VIMOS_IMG_AFC043_0019_A.2.fits	VIMOS.2015-02-12T13:04:32.955	Free	R	Cal_mos_flux-2mod6.adp	0.55 e-/adu	2.002
VIMOS_IMG_AFC043_0020_B.1.fits	VIMOS.2015-02-12T13:55:11.200	Free	R	Cal_mos_flux-1mod6.adp	0.53 e-/adu	1.998
VIMOS_IMG_AFC043_0020_B.4.fits	VIMOS.2015-02-12T13:55:11.199	Free	R	Cal_mos_flux-4mod6.adp	0.54 e-/adu	1.998
VIMOS_IMG_AFC043_0020_A.3.fits	VIMOS.2015-02-12T13:55:11.202	Free	R	Cal_mos_flux-3mod6.adp	0.56 e-/adu	1.999
VIMOS_IMG_AFC043_0020_A.2.fits	VIMOS.2015-02-12T13:55:11.201	Free	R	Cal_mos_flux-2mod6.adp	0.55 e-/adu	1.999
VIMOS_IMG_AFC043_0021_A.3.fits	VIMOS.2015-02-12T13:55:41.466	Free	R	Cal_mos_flux-3mod6.adp	0.56 e-/adu	2.006
VIMOS_IMG_AFC043_0021_A.2.fits	VIMOS.2015-02-12T13:55:41.465	Free	R	Cal_mos_flux-2mod6.adp	0.55 e-/adu	2.006
VIMOS_IMG_AFC043_0021_B.4.fits	VIMOS.2015-02-12T13:55:41.473	Free	R	Cal_mos_flux-4mod6.adp	0.54 e-/adu	1.995
VIMOS_IMG_AFC043_0021_B.1.fits	VIMOS.2015-02-12T13:55:41.474	Free	R	Cal_mos_flux-1mod6.adp	0.53 e-/adu	1.995

Template VIMOS_mos_cal_DayCalib

Data Product CALIB/FLAT,LAMP/MOS

CCD 225kHz,1port,HG/1x1/2048x4096

Lamps QTH10

Original Filename	Archive Filename	Grism	Filter	INS.ADF.ID	DET.OUT1.CONAD	EXPTIME
VIMOS_MOS_LAMP043_0001_B.4.fits	VIMOS.2015-02-12T11:13:27.595	MR	GG475	P4bQ4_final_vm_MR_M1Q4.adp	0.57 e-/adu	17.998
VIMOS_MOS_LAMP043_0001_B.1.fits	VIMOS.2015-02-12T11:13:27.592	MR	GG475	P4bQ1_final_vm_MR_M1Q1.adp	0.55 e-/adu	17.998
VIMOS_MOS_LAMP043_0001_A.2.fits	VIMOS.2015-02-12T11:13:27.594	MR	GG475	P4bQ2_final_vm_MR_M1Q2.adp	0.6 e-/adu	18.008
VIMOS_MOS_LAMP043_0001_A.3.fits	VIMOS.2015-02-12T11:13:27.593	MR	GG475	P4bQ3_final_vm_MR_M1Q3.adp	0.56 e-/adu	18.008
VIMOS_MOS_LAMP043_0002_B.1.fits	VIMOS.2015-02-12T11:14:45.301	MR	GG475	P4bQ1_final_vm_MR_M1Q1.adp	0.55 e-/adu	17.997
VIMOS_MOS_LAMP043_0002_B.4.fits	VIMOS.2015-02-12T11:14:45.302	MR	GG475	P4bQ4_final_vm_MR_M1Q4.adp	0.57 e-/adu	17.997
VIMOS_MOS_LAMP043_0002_A.2.fits	VIMOS.2015-02-12T11:14:45.303	MR	GG475	P4bQ2_final_vm_MR_M1Q2.adp	0.6 e-/adu	18.003
VIMOS_MOS_LAMP043_0002_A.3.fits	VIMOS.2015-02-12T11:14:45.304	MR	GG475	P4bQ3_final_vm_MR_M1Q3.adp	0.56 e-/adu	18.003
VIMOS_MOS_LAMP043_0003_A.3.fits	VIMOS.2015-02-12T11:16:02.301	MR	GG475	P4bQ3_final_vm_MR_M1Q3.adp	0.56 e-/adu	18.003
VIMOS_MOS_LAMP043_0003_A.2.fits	VIMOS.2015-02-12T11:16:02.302	MR	GG475	P4bQ2_final_vm_MR_M1Q2.adp	0.6 e-/adu	18.003
VIMOS_MOS_LAMP043_0003_B.1.fits	VIMOS.2015-02-12T11:16:02.312	MR	GG475	P4bQ1_final_vm_MR_M1Q1.adp	0.55 e-/adu	17.997
VIMOS_MOS_LAMP043_0003_B.4.fits	VIMOS.2015-02-12T11:16:02.311	MR	GG475	P4bQ4_final_vm_MR_M1Q4.adp	0.57 e-/adu	17.997
VIMOS_MOS_LAMP043_0004_B.1.fits	VIMOS.2015-02-12T11:17:20.280	MR	GG475	P4bQ1_final_vm_MR_M1Q1.adp	0.55 e-/adu	17.995
VIMOS_MOS_LAMP043_0004_B.4.fits	VIMOS.2015-02-12T11:17:20.279	MR	GG475	P4bQ4_final_vm_MR_M1Q4.adp	0.57 e-/adu	17.995
VIMOS_MOS_LAMP043_0004_A.3.fits	VIMOS.2015-02-12T11:17:20.282	MR	GG475	P4bQ3_final_vm_MR_M1Q3.adp	0.56 e-/adu	17.999
VIMOS_MOS_LAMP043_0004_A.2.fits	VIMOS.2015-02-12T11:17:20.281	MR	GG475	P4bQ2_final_vm_MR_M1Q2.adp	0.6 e-/adu	17.999
VIMOS_MOS_LAMP043_0005_B.4.fits	VIMOS.2015-02-12T11:18:37.279	MR	GG475	P4bQ4_final_vm_MR_M1Q4.adp	0.57 e-/adu	17.997
VIMOS_MOS_LAMP043_0005_B.1.fits	VIMOS.2015-02-12T11:18:37.278	MR	GG475	P4bQ1_final_vm_MR_M1Q1.adp	0.55 e-/adu	17.997
VIMOS_MOS_LAMP043_0005_A.3.fits	VIMOS.2015-02-12T11:18:37.280	MR	GG475	P4bQ3_final_vm_MR_M1Q3.adp	0.56 e-/adu	18.003
VIMOS_MOS_LAMP043_0005_A.2.fits	VIMOS.2015-02-12T11:18:37.281	MR	GG475	P4bQ2_final_vm_MR_M1Q2.adp	0.6 e-/adu	18.003
VIMOS_MOS_LAMP043_0006_A.3.fits	VIMOS.2015-02-12T11:32:31.553	MR	GG475	VCC1154_SQ3_contributed_vm_MR_	0.56 e-/adu	18.002
VIMOS_MOS_LAMP043_0006_A.2.fits	VIMOS.2015-02-12T11:32:31.554	MR	GG475	VCC1154_SQ2_contributed_vm_MR_	0.6 e-/adu	18.002
VIMOS_MOS_LAMP043_0006_B.4.fits	VIMOS.2015-02-12T11:32:31.555	MR	GG475	VCC1154_SQ4_contributed_vm_MR_	0.57 e-/adu	17.997
VIMOS_MOS_LAMP043_0006_B.1.fits	VIMOS.2015-02-12T11:32:31.556	MR	GG475	VCC1154_SQ1_contributed_vm_MR_	0.55 e-/adu	17.997
VIMOS_MOS_LAMP043_0007_A.3.fits	VIMOS.2015-02-12T11:33:48.293	MR	GG475	VCC1154_SQ3_contributed_vm_MR_	0.56 e-/adu	18.0
VIMOS_MOS_LAMP043_0007_A.2.fits	VIMOS.2015-02-12T11:33:48.292	MR	GG475	VCC1154_SQ2_contributed_vm_MR_	0.6 e-/adu	18.0
VIMOS_MOS_LAMP043_0007_B.4.fits	VIMOS.2015-02-12T11:33:48.295	MR	GG475	VCC1154_SQ4_contributed_vm_MR_	0.57 e-/adu	17.997
VIMOS_MOS_LAMP043_0007_B.1.fits	VIMOS.2015-02-12T11:33:48.294	MR	GG475	VCC1154_SQ1_contributed_vm_MR_	0.55 e-/adu	17.997
VIMOS_MOS_LAMP043_0008_A.2.fits	VIMOS.2015-02-12T11:35:08.282	MR	GG475	VCC1154_SQ2_contributed_vm_MR_	0.6 e-/adu	18.003
VIMOS_MOS_LAMP043_0008_A.3.fits	VIMOS.2015-02-12T11:35:08.283	MR	GG475	VCC1154_SQ3_contributed_vm_MR_	0.56 e-/adu	18.003
VIMOS_MOS_LAMP043_0008_B.4.fits	VIMOS.2015-02-12T11:35:08.285	MR	GG475	VCC1154_SQ4_contributed_vm_MR_	0.57 e-/adu	17.998
VIMOS_MOS_LAMP043_0008_B.1.fits	VIMOS.2015-02-12T11:35:08.284	MR	GG475	VCC1154_SQ1_contributed_vm_MR_	0.55 e-/adu	17.998
VIMOS_MOS_LAMP043_0009_A.2.fits	VIMOS.2015-02-12T11:36:25.272	MR	GG475	VCC1154_SQ2_contributed_vm_MR_	0.6 e-/adu	17.999
VIMOS_MOS_LAMP043_0009_A.3.fits	VIMOS.2015-02-12T11:36:25.273	MR	GG475	VCC1154_SQ3_contributed_vm_MR_	0.56 e-/adu	17.999
VIMOS_MOS_LAMP043_0009_B.4.fits	VIMOS.2015-02-12T11:36:25.274	MR	GG475	VCC1154_SQ4_contributed_vm_MR_	0.57 e-/adu	17.997
VIMOS_MOS_LAMP043_0009_B.1.fits	VIMOS.2015-02-12T11:36:25.275	MR	GG475	VCC1154_SQ1_contributed_vm_MR_	0.55 e-/adu	17.997
VIMOS_MOS_LAMP043_0010_A.3.fits	VIMOS.2015-02-12T11:37:42.443	MR	GG475	VCC1154_SQ3_contributed_vm_MR_	0.56 e-/adu	18.003
VIMOS_MOS_LAMP043_0010_B.4.fits	VIMOS.2015-02-12T11:37:42.445	MR	GG475	VCC1154_SQ4_contributed_vm_MR_	0.57 e-/adu	17.996
VIMOS_MOS_LAMP043_0010_B.1.fits	VIMOS.2015-02-12T11:37:42.444	MR	GG475	VCC1154_SQ1_contributed_vm_MR_	0.55 e-/adu	17.996
VIMOS_MOS_LAMP043_0010_A.2.fits	VIMOS.2015-02-12T11:37:42.442	MR	GG475	VCC1154_SQ2_contributed_vm_MR_	0.6 e-/adu	18.003
VIMOS_MOS_LAMP043_0011_A.2.fits	VIMOS.2015-02-12T12:01:04.805	LR_red	OS-red	Cal_mos_flux-2mod6.adp	0.6 e-/adu	2.007
VIMOS_MOS_LAMP043_0011_A.3.fits	VIMOS.2015-02-12T12:01:04.804	LR_red	OS-red	Cal_mos_flux-3mod6.adp	0.56 e-/adu	2.007
VIMOS_MOS_LAMP043_0011_B.4.fits	VIMOS.2015-02-12T12:01:04.806	LR_red	OS-red	Cal_mos_flux-4mod6.adp	0.57 e-/adu	1.997

VIMOS_MOS_LAMP043_0028_B.4.fits	VIMOS.2015-02-12T12:43:45.268	LR_blue	OS-blue	Cal_mos_flux-4mod6.adp	0.57 e-/adu	15.997
VIMOS_MOS_LAMP043_0028_B.1.fits	VIMOS.2015-02-12T12:43:45.267	LR_blue	OS-blue	Cal_mos_flux-1mod6.adp	0.55 e-/adu	15.997
VIMOS_MOS_LAMP043_0029_B.1.fits	VIMOS.2015-02-12T12:45:00.256	LR_blue	OS-blue	Cal_mos_flux-1mod6.adp	0.55 e-/adu	15.998
VIMOS_MOS_LAMP043_0029_B.4.fits	VIMOS.2015-02-12T12:45:00.255	LR_blue	OS-blue	Cal_mos_flux-4mod6.adp	0.57 e-/adu	15.998
VIMOS_MOS_LAMP043_0029_A.2.fits	VIMOS.2015-02-12T12:45:00.260	LR_blue	OS-blue	Cal_mos_flux-2mod6.adp	0.6 e-/adu	15.999
VIMOS_MOS_LAMP043_0029_A.3.fits	VIMOS.2015-02-12T12:45:00.261	LR_blue	OS-blue	Cal_mos_flux-3mod6.adp	0.56 e-/adu	15.999
VIMOS_MOS_LAMP043_0030_A.2.fits	VIMOS.2015-02-12T12:46:15.260	LR_blue	OS-blue	Cal_mos_flux-2mod6.adp	0.6 e-/adu	15.999
VIMOS_MOS_LAMP043_0030_A.3.fits	VIMOS.2015-02-12T12:46:15.259	LR_blue	OS-blue	Cal_mos_flux-3mod6.adp	0.56 e-/adu	15.999
VIMOS_MOS_LAMP043_0030_B.4.fits	VIMOS.2015-02-12T12:46:15.265	LR_blue	OS-blue	Cal_mos_flux-4mod6.adp	0.57 e-/adu	15.996
VIMOS_MOS_LAMP043_0030_B.1.fits	VIMOS.2015-02-12T12:46:15.264	LR_blue	OS-blue	Cal_mos_flux-1mod6.adp	0.55 e-/adu	15.996
VIMOS_MOS_LAMP043_0031_B.1.fits	VIMOS.2015-02-12T13:58:09.221	MR	OS-blue	Cal_mos_flux-1mod6.adp	0.55 e-/adu	17.997
VIMOS_MOS_LAMP043_0031_B.4.fits	VIMOS.2015-02-12T13:58:09.220	MR	OS-blue	Cal_mos_flux-4mod6.adp	0.57 e-/adu	17.997
VIMOS_MOS_LAMP043_0031_A.3.fits	VIMOS.2015-02-12T13:58:09.223	MR	OS-blue	Cal_mos_flux-3mod6.adp	0.56 e-/adu	18.001
VIMOS_MOS_LAMP043_0031_A.2.fits	VIMOS.2015-02-12T13:58:09.224	MR	OS-blue	Cal_mos_flux-2mod6.adp	0.6 e-/adu	18.001
VIMOS_MOS_LAMP043_0032_A.3.fits	VIMOS.2015-02-12T13:59:26.292	MR	OS-blue	Cal_mos_flux-3mod6.adp	0.56 e-/adu	18.006
VIMOS_MOS_LAMP043_0032_A.2.fits	VIMOS.2015-02-12T13:59:26.293	MR	OS-blue	Cal_mos_flux-2mod6.adp	0.6 e-/adu	18.006
VIMOS_MOS_LAMP043_0032_B.1.fits	VIMOS.2015-02-12T13:59:26.300	MR	OS-blue	Cal_mos_flux-1mod6.adp	0.55 e-/adu	17.997
VIMOS_MOS_LAMP043_0032_B.4.fits	VIMOS.2015-02-12T13:59:26.299	MR	OS-blue	Cal_mos_flux-4mod6.adp	0.57 e-/adu	17.997
VIMOS_MOS_LAMP043_0033_A.3.fits	VIMOS.2015-02-12T14:00:43.303	MR	OS-blue	Cal_mos_flux-3mod6.adp	0.56 e-/adu	18.003
VIMOS_MOS_LAMP043_0033_A.2.fits	VIMOS.2015-02-12T14:00:43.302	MR	OS-blue	Cal_mos_flux-2mod6.adp	0.6 e-/adu	18.003
VIMOS_MOS_LAMP043_0033_B.1.fits	VIMOS.2015-02-12T14:00:43.310	MR	OS-blue	Cal_mos_flux-1mod6.adp	0.55 e-/adu	17.997
VIMOS_MOS_LAMP043_0033_B.4.fits	VIMOS.2015-02-12T14:00:43.309	MR	OS-blue	Cal_mos_flux-4mod6.adp	0.57 e-/adu	17.997
VIMOS_MOS_LAMP043_0034_A.2.fits	VIMOS.2015-02-12T14:02:00.292	MR	OS-blue	Cal_mos_flux-2mod6.adp	0.6 e-/adu	18.0
VIMOS_MOS_LAMP043_0034_A.3.fits	VIMOS.2015-02-12T14:02:00.293	MR	OS-blue	Cal_mos_flux-3mod6.adp	0.56 e-/adu	18.0
VIMOS_MOS_LAMP043_0034_B.4.fits	VIMOS.2015-02-12T14:02:00.298	MR	OS-blue	Cal_mos_flux-4mod6.adp	0.57 e-/adu	17.997
VIMOS_MOS_LAMP043_0034_B.1.fits	VIMOS.2015-02-12T14:02:00.297	MR	OS-blue	Cal_mos_flux-1mod6.adp	0.55 e-/adu	17.997
VIMOS_MOS_LAMP043_0035_A.3.fits	VIMOS.2015-02-12T14:03:17.302	MR	OS-blue	Cal_mos_flux-3mod6.adp	0.56 e-/adu	18.002
VIMOS_MOS_LAMP043_0035_A.2.fits	VIMOS.2015-02-12T14:03:17.301	MR	OS-blue	Cal_mos_flux-2mod6.adp	0.6 e-/adu	18.002
VIMOS_MOS_LAMP043_0035_B.4.fits	VIMOS.2015-02-12T14:03:17.306	MR	OS-blue	Cal_mos_flux-4mod6.adp	0.57 e-/adu	17.997
VIMOS_MOS_LAMP043_0035_B.1.fits	VIMOS.2015-02-12T14:03:17.307	MR	OS-blue	Cal_mos_flux-1mod6.adp	0.55 e-/adu	17.997

Template VIMOS_mos_cal_DayCalib

Data Product CALIB/WAVE,LAMP/MOS

CCD 225kHz,1port,HG/1x1/2048x4096

Lamps He / Ar

Original Filename	Archive Filename	Grism	Filter	INS.ADF.ID	DET.OUT1.CONAD	EXPTIME
VIMOS_MOS_WAVE043_0001_B.4.fits	VIMOS.2015-02-12T11:20:02.809	MR	GG475	P4bQ4_final_vm_MR_M1Q4.adp	0.57 e-/adu	8.989
VIMOS_MOS_WAVE043_0001_B.1.fits	VIMOS.2015-02-12T11:20:02.808	MR	GG475	P4bQ1_final_vm_MR_M1Q1.adp	0.55 e-/adu	8.989
VIMOS_MOS_WAVE043_0001_A.3.fits	VIMOS.2015-02-12T11:20:02.811	MR	GG475	P4bQ3_final_vm_MR_M1Q3.adp	0.56 e-/adu	9.003
VIMOS_MOS_WAVE043_0001_A.2.fits	VIMOS.2015-02-12T11:20:02.812	MR	GG475	P4bQ2_final_vm_MR_M1Q2.adp	0.6 e-/adu	9.003
VIMOS_MOS_WAVE043_0002_B.4.fits	VIMOS.2015-02-12T11:39:05.891	MR	GG475	VCC1154_SQ4_contributed_vm_MR_	0.57 e-/adu	8.989
VIMOS_MOS_WAVE043_0002_B.1.fits	VIMOS.2015-02-12T11:39:05.892	MR	GG475	VCC1154_SQ1_contributed_vm_MR_	0.55 e-/adu	8.989
VIMOS_MOS_WAVE043_0002_A.3.fits	VIMOS.2015-02-12T11:39:05.893	MR	GG475	VCC1154_SQ3_contributed_vm_MR_	0.56 e-/adu	9.011
VIMOS_MOS_WAVE043_0002_A.2.fits	VIMOS.2015-02-12T11:39:05.894	MR	GG475	VCC1154_SQ2_contributed_vm_MR_	0.6 e-/adu	9.011
VIMOS_MOS_WAVE043_0003_A.3.fits	VIMOS.2015-02-12T12:06:23.266	LR_red	OS-red	Cal_mos_flux-3mod6.adp	0.56 e-/adu	9.003
VIMOS_MOS_WAVE043_0003_B.4.fits	VIMOS.2015-02-12T12:06:23.264	LR_red	OS-red	Cal_mos_flux-4mod6.adp	0.57 e-/adu	8.993
VIMOS_MOS_WAVE043_0003_B.1.fits	VIMOS.2015-02-12T12:06:23.263	LR_red	OS-red	Cal_mos_flux-1mod6.adp	0.55 e-/adu	8.993
VIMOS_MOS_WAVE043_0003_A.2.fits	VIMOS.2015-02-12T12:06:23.265	LR_red	OS-red	Cal_mos_flux-2mod6.adp	0.6 e-/adu	9.003
VIMOS_MOS_WAVE043_0004_A.2.fits	VIMOS.2015-02-12T12:17:45.899	LR_red	Free	Cal_mos_flux-2mod6.adp	0.6 e-/adu	9.001
VIMOS_MOS_WAVE043_0004_A.3.fits	VIMOS.2015-02-12T12:17:45.898	LR_red	Free	Cal_mos_flux-3mod6.adp	0.56 e-/adu	9.001
VIMOS_MOS_WAVE043_0004_B.1.fits	VIMOS.2015-02-12T12:17:45.904	LR_red	Free	Cal_mos_flux-1mod6.adp	0.55 e-/adu	8.991
VIMOS_MOS_WAVE043_0004_B.4.fits	VIMOS.2015-02-12T12:17:45.903	LR_red	Free	Cal_mos_flux-4mod6.adp	0.57 e-/adu	8.991

Template VIMOS_mos_cal_DayCalib

Data Product CALIB/WAVE,LAMP/MOS

CCD 225kHz,1port,HG/1x1/2048x4096

Lamps He / Ne

Original Filename	Archive Filename	Grism	Filter	INS.ADF.ID	DET.OUT1.CONAD	EXPTIME
VIMOS_MOS_WAVE043_0005_A.2.fits	VIMOS.2015-02-12T12:34:56.836	LR_blue	Free	Cal_mos_flux-2mod6.adp	0.6 e-/adu	9.0
VIMOS_MOS_WAVE043_0005_A.3.fits	VIMOS.2015-02-12T12:34:56.835	LR_blue	Free	Cal_mos_flux-3mod6.adp	0.56 e-/adu	9.0
VIMOS_MOS_WAVE043_0005_B.1.fits	VIMOS.2015-02-12T12:34:56.845	LR_blue	Free	Cal_mos_flux-1mod6.adp	0.55 e-/adu	8.99
VIMOS_MOS_WAVE043_0005_B.4.fits	VIMOS.2015-02-12T12:34:56.844	LR_blue	Free	Cal_mos_flux-4mod6.adp	0.57 e-/adu	8.99
VIMOS_MOS_WAVE043_0006_B.1.fits	VIMOS.2015-02-12T12:47:38.845	LR_blue	OS-blue	Cal_mos_flux-1mod6.adp	0.55 e-/adu	8.992
VIMOS_MOS_WAVE043_0006_B.4.fits	VIMOS.2015-02-12T12:47:38.844	LR_blue	OS-blue	Cal_mos_flux-4mod6.adp	0.57 e-/adu	8.992
VIMOS_MOS_WAVE043_0006_A.2.fits	VIMOS.2015-02-12T12:47:38.849	LR_blue	OS-blue	Cal_mos_flux-2mod6.adp	0.6 e-/adu	9.011
VIMOS_MOS_WAVE043_0006_A.3.fits	VIMOS.2015-02-12T12:47:38.850	LR_blue	OS-blue	Cal_mos_flux-3mod6.adp	0.56 e-/adu	9.011

Template VIMOS_mos_cal_DayCalib

Data Product CALIB/WAVE,LAMP/MOS

CCD 225kHz, 1port, HG/1x1/2048x4096

Lamps He / Ne / Ar

Original Filename	Archive Filename	Grism	Filter	INS.ADF.ID	DET.OUT1.CONAD	EXPTIME
VIMOS_MOS_WAVE043_0007_A.3.fits	VIMOS.2015-02-12T14:04:45.093	MR	OS-blue	Cal_mos_flux-3mod6.adp	0.56 e-/adu	9.004
VIMOS_MOS_WAVE043_0007_A.2.fits	VIMOS.2015-02-12T14:04:45.092	MR	OS-blue	Cal_mos_flux-2mod6.adp	0.6 e-/adu	9.004
VIMOS_MOS_WAVE043_0007_B.1.fits	VIMOS.2015-02-12T14:04:45.108	MR	OS-blue	Cal_mos_flux-1mod6.adp	0.55 e-/adu	8.987
VIMOS_MOS_WAVE043_0007_B.4.fits	VIMOS.2015-02-12T14:04:45.107	MR	OS-blue	Cal_mos_flux-4mod6.adp	0.57 e-/adu	8.987

Template VIMOS_ifu_cal_DayCalib

Data Product CALIB/FLAT,LAMP/IFU

CCD 225kHz, 1port, HG/1x1/2048x4096

Lamps QTH50

Original Filename	Archive Filename	Grism	Filter	IFUE	IFUS	DET.OUT1.CONAD	EXPTIME
VIMOS_IFU_LAMP043_0001_A.3.fits	VIMOS.2015-02-12T14:15:35.492	HR_orange	GG435	0.67	small	0.56 e-/adu	20.007
VIMOS_IFU_LAMP043_0001_A.2.fits	VIMOS.2015-02-12T14:15:35.495	HR_orange	GG435	0.67	small	0.6 e-/adu	20.007
VIMOS_IFU_LAMP043_0001_B.1.fits	VIMOS.2015-02-12T14:15:35.493	HR_orange	GG435	0.67	small	0.55 e-/adu	19.997
VIMOS_IFU_LAMP043_0001_B.4.fits	VIMOS.2015-02-12T14:15:35.494	HR_orange	GG435	0.67	small	0.57 e-/adu	19.997
VIMOS_IFU_LAMP043_0002_B.1.fits	VIMOS.2015-02-12T14:16:57.323	HR_orange	GG435	0.67	small	0.55 e-/adu	19.997
VIMOS_IFU_LAMP043_0002_A.2.fits	VIMOS.2015-02-12T14:16:57.326	HR_orange	GG435	0.67	small	0.6 e-/adu	20.003
VIMOS_IFU_LAMP043_0002_A.3.fits	VIMOS.2015-02-12T14:16:57.325	HR_orange	GG435	0.67	small	0.56 e-/adu	20.003
VIMOS_IFU_LAMP043_0002_B.4.fits	VIMOS.2015-02-12T14:16:57.324	HR_orange	GG435	0.67	small	0.57 e-/adu	19.997
VIMOS_IFU_LAMP043_0003_B.1.fits	VIMOS.2015-02-12T14:18:18.342	HR_orange	GG435	0.67	small	0.55 e-/adu	19.997
VIMOS_IFU_LAMP043_0003_B.4.fits	VIMOS.2015-02-12T14:18:18.343	HR_orange	GG435	0.67	small	0.57 e-/adu	19.997
VIMOS_IFU_LAMP043_0003_A.3.fits	VIMOS.2015-02-12T14:18:18.354	HR_orange	GG435	0.67	small	0.56 e-/adu	19.998
VIMOS_IFU_LAMP043_0003_A.2.fits	VIMOS.2015-02-12T14:18:18.353	HR_orange	GG435	0.67	small	0.6 e-/adu	19.998
VIMOS_IFU_LAMP043_0004_B.4.fits	VIMOS.2015-02-12T14:19:39.315	HR_orange	GG435	0.67	small	0.57 e-/adu	19.997
VIMOS_IFU_LAMP043_0004_B.1.fits	VIMOS.2015-02-12T14:19:39.312	HR_orange	GG435	0.67	small	0.55 e-/adu	19.997
VIMOS_IFU_LAMP043_0004_A.2.fits	VIMOS.2015-02-12T14:19:39.313	HR_orange	GG435	0.67	small	0.6 e-/adu	20.0
VIMOS_IFU_LAMP043_0004_A.3.fits	VIMOS.2015-02-12T14:19:39.314	HR_orange	GG435	0.67	small	0.56 e-/adu	20.0
VIMOS_IFU_LAMP043_0005_B.4.fits	VIMOS.2015-02-12T14:21:00.312	HR_orange	GG435	0.67	small	0.57 e-/adu	19.996
VIMOS_IFU_LAMP043_0005_B.1.fits	VIMOS.2015-02-12T14:21:00.311	HR_orange	GG435	0.67	small	0.55 e-/adu	19.996
VIMOS_IFU_LAMP043_0005_A.3.fits	VIMOS.2015-02-12T14:21:00.324	HR_orange	GG435	0.67	small	0.56 e-/adu	20.001
VIMOS_IFU_LAMP043_0005_A.2.fits	VIMOS.2015-02-12T14:21:00.323	HR_orange	GG435	0.67	small	0.6 e-/adu	20.001
VIMOS_IFU_LAMP043_0006_B.1.fits	VIMOS.2015-02-12T14:27:37.478	LR_red	OS-red	0.33	small	0.55 e-/adu	0.997
VIMOS_IFU_LAMP043_0006_B.4.fits	VIMOS.2015-02-12T14:27:37.477	LR_red	OS-red	0.33	small	0.57 e-/adu	0.997
VIMOS_IFU_LAMP043_0006_A.3.fits	VIMOS.2015-02-12T14:27:37.483	LR_red	OS-red	0.33	small	0.56 e-/adu	1.002
VIMOS_IFU_LAMP043_0006_A.2.fits	VIMOS.2015-02-12T14:27:37.482	LR_red	OS-red	0.33	small	0.6 e-/adu	1.002
VIMOS_IFU_LAMP043_0007_A.2.fits	VIMOS.2015-02-12T14:28:41.240	LR_red	OS-red	0.33	small	0.6 e-/adu	0.999
VIMOS_IFU_LAMP043_0007_A.3.fits	VIMOS.2015-02-12T14:28:41.241	LR_red	OS-red	0.33	small	0.56 e-/adu	0.999
VIMOS_IFU_LAMP043_0007_B.1.fits	VIMOS.2015-02-12T14:28:41.247	LR_red	OS-red	0.33	small	0.55 e-/adu	0.997
VIMOS_IFU_LAMP043_0007_B.4.fits	VIMOS.2015-02-12T14:28:41.246	LR_red	OS-red	0.33	small	0.57 e-/adu	0.997
VIMOS_IFU_LAMP043_0008_A.2.fits	VIMOS.2015-02-12T14:29:43.308	LR_red	OS-red	0.33	small	0.6 e-/adu	1.002
VIMOS_IFU_LAMP043_0008_A.3.fits	VIMOS.2015-02-12T14:29:43.309	LR_red	OS-red	0.33	small	0.56 e-/adu	1.002
VIMOS_IFU_LAMP043_0008_B.1.fits	VIMOS.2015-02-12T14:29:43.314	LR_red	OS-red	0.33	small	0.55 e-/adu	0.996
VIMOS_IFU_LAMP043_0008_B.4.fits	VIMOS.2015-02-12T14:29:43.313	LR_red	OS-red	0.33	small	0.57 e-/adu	0.996
VIMOS_IFU_LAMP043_0009_A.3.fits	VIMOS.2015-02-12T14:30:45.296	LR_red	OS-red	0.33	small	0.56 e-/adu	1.002
VIMOS_IFU_LAMP043_0009_A.2.fits	VIMOS.2015-02-12T14:30:45.295	LR_red	OS-red	0.33	small	0.6 e-/adu	1.002
VIMOS_IFU_LAMP043_0009_B.4.fits	VIMOS.2015-02-12T14:30:45.311	LR_red	OS-red	0.33	small	0.57 e-/adu	0.997
VIMOS_IFU_LAMP043_0009_B.1.fits	VIMOS.2015-02-12T14:30:45.310	LR_red	OS-red	0.33	small	0.55 e-/adu	0.997
VIMOS_IFU_LAMP043_0010_A.3.fits	VIMOS.2015-02-12T14:31:48.323	LR_red	OS-red	0.33	small	0.56 e-/adu	1.004
VIMOS_IFU_LAMP043_0010_A.2.fits	VIMOS.2015-02-12T14:31:48.324	LR_red	OS-red	0.33	small	0.6 e-/adu	1.004
VIMOS_IFU_LAMP043_0010_B.4.fits	VIMOS.2015-02-12T14:31:48.329	LR_red	OS-red	0.33	small	0.57 e-/adu	0.997
VIMOS_IFU_LAMP043_0010_B.1.fits	VIMOS.2015-02-12T14:31:48.328	LR_red	OS-red	0.33	small	0.55 e-/adu	0.997

Template VIMOS_ifu_cal_DayCalib

Data Product CALIB/WAVE,LAMP/IFU

CCD 225kHz, 1port, HG/1x1/2048x4096

Lamps He / Ne / Ar

Original Filename	Archive Filename	Grism	Filter	IFUE	IFUS	DET.OUT1.CONAD	EXPTIME
VIMOS_IFU_WAVE043_0001_B.1.fits	VIMOS.2015-02-12T14:22:15.671	HR_orange	GG435	0.67	small	0.55 e-/adu	12.987
VIMOS_IFU_WAVE043_0001_B.4.fits	VIMOS.2015-02-12T14:22:15.670	HR_orange	GG435	0.67	small	0.57 e-/adu	12.987
VIMOS_IFU_WAVE043_0001_A.2.fits	VIMOS.2015-02-12T14:22:15.672	HR_orange	GG435	0.67	small	0.6 e-/adu	13.002
VIMOS_IFU_WAVE043_0001_A.3.fits	VIMOS.2015-02-12T14:22:15.673	HR_orange	GG435	0.67	small	0.56 e-/adu	13.002

Template VIMOS_ifu_cal_DayCalib

Data Product CALIB/WAVE,LAMP/IFU

CCD 225kHz, 1port, HG/1x1/2048x4096

Lamps He / Ar

Original Filename	Archive Filename	Grism	Filter	IFUE	IFUS	DET.OUT1.CONAD	EXPTIME
VIMOS_IFU_WAVE043_0002_B.4.fits	VIMOS.2015-02-12T14:32:46.355	LR_red	OS-red	0.33	small	0.57 e-/adu	9.988
VIMOS_IFU_WAVE043_0002_B.1.fits	VIMOS.2015-02-12T14:32:46.354	LR_red	OS-red	0.33	small	0.55 e-/adu	9.988
VIMOS_IFU_WAVE043_0002_A.3.fits	VIMOS.2015-02-12T14:32:46.360	LR_red	OS-red	0.33	small	0.56 e-/adu	10.007
VIMOS_IFU_WAVE043_0002_A.2.fits	VIMOS.2015-02-12T14:32:46.361	LR_red	OS-red	0.33	small	0.6 e-/adu	10.007

Nighttime Observations

OB 1157773 | 00:45:16 > 02:28:19 | 01:43:03 | Mode: Commissioning | Loss: No Loss | Status A > C

Grade B

Instrument	SPHERE
Name	LkCa15_PDI science run
Target	LkCa15
PI	Christian Thalmann
Run	60.A-9358(A)
Container	Concatenation 1158371
Public Comments	Seeing between 0.8 and 1" The AO correction was good, the AO loop was stable, it opened twice because the telescope lost briefly tracking. We OB was aborted before the end in order to have time to observe the reference time at a reasonable airmass. <i>12 Feb 04:02</i> Seeing between 0.8 and 1" The loop opened twice during the sequence, and the visible ADC failed. Data sorting will be necessary but the correction was good and strehl was about 60% at 1.6 micron <i>12 Feb 04:03 - Paranal Observatory</i>

Files produced and additional information

OBS.ID 1157773

OBS.START 2015-02-12T00:45:16

Template SPHERE_zimpol_p_acq

Original Filename	Archive Filename	TPL.EXPNO/NEXP	DPR.TYPE	INS.FILT1.NAME	EXPTIME
SPHERE_ZIMPOL_OBS043_0001.fits	SPHER.2015-02-12T00:52:48.374	1/1	OBJECT		30.0
SPHERE_ZIMPOL_OBS043_0002.fits	SPHER.2015-02-12T00:54:16.845	2/1	OBJECT		30.0
SPHERE_ZIMPOL_OBS043_0003.fits	SPHER.2015-02-12T00:57:40.018	3/1	OBJECT		30.0
SPHERE_ZIMPOL_OBS043_0004.fits	SPHER.2015-02-12T00:58:34.611	4/1	OBJECT		30.0
SPHERE_ZIMPOL_OBS043_0005.fits	SPHER.2015-02-12T00:59:34.875	5/1	OBJECT		30.0

Template SPHERE_zimpol_p2_obs

Original Filename	Archive Filename	TPL.EXPNO/NEXP	DPR.TYPE	INS.FILT1.NAME	EXPTIME
SPHERE_ZIMPOL_OBS043_0006.fits	SPHER.2015-02-12T01:03:06.063	1/1	OBJECT		20.0
SPHERE_ZIMPOL_OBS043_0007.fits	SPHER.2015-02-12T01:06:27.867	1/40	OBJECT		20.0
SPHERE_ZIMPOL_OBS043_0008.fits	SPHER.2015-02-12T01:09:23.058	2/40	OBJECT		20.0
SPHERE_ZIMPOL_OBS043_0009.fits	SPHER.2015-02-12T01:12:17.981	3/40	OBJECT		20.0
SPHERE_ZIMPOL_OBS043_0010.fits	SPHER.2015-02-12T01:15:14.021	4/40	OBJECT		20.0
SPHERE_ZIMPOL_OBS043_0011.fits	SPHER.2015-02-12T01:18:09.274	5/40	OBJECT		20.0
SPHERE_ZIMPOL_OBS043_0012.fits	SPHER.2015-02-12T01:21:04.209	6/40	OBJECT		20.0
SPHERE_ZIMPOL_OBS043_0013.fits	SPHER.2015-02-12T01:23:59.038	7/40	OBJECT		20.0
SPHERE_ZIMPOL_OBS043_0014.fits	SPHER.2015-02-12T01:26:54.962	8/40	OBJECT		20.0
SPHERE_ZIMPOL_OBS043_0015.fits	SPHER.2015-02-12T01:29:50.262	9/40	OBJECT		20.0
SPHERE_ZIMPOL_OBS043_0016.fits	SPHER.2015-02-12T01:32:46.009	10/40	OBJECT		20.0
SPHERE_ZIMPOL_OBS043_0017.fits	SPHER.2015-02-12T01:35:40.982	11/40	OBJECT		20.0
SPHERE_ZIMPOL_OBS043_0018.fits	SPHER.2015-02-12T01:38:39.034	12/40	OBJECT		20.0
SPHERE_ZIMPOL_OBS043_0019.fits	SPHER.2015-02-12T01:41:35.269	13/40	OBJECT		20.0
SPHERE_ZIMPOL_OBS043_0020.fits	SPHER.2015-02-12T01:44:30.105	14/40	OBJECT		20.0
SPHERE_ZIMPOL_OBS043_0021.fits	SPHER.2015-02-12T01:47:26.027	15/40	OBJECT		20.0
SPHERE_ZIMPOL_OBS043_0022.fits	SPHER.2015-02-12T01:50:21.982	16/40	OBJECT		20.0
SPHERE_ZIMPOL_OBS043_0023.fits	SPHER.2015-02-12T01:53:17.275	17/40	OBJECT		20.0
SPHERE_ZIMPOL_OBS043_0024.fits	SPHER.2015-02-12T01:56:12.986	18/40	OBJECT		20.0
SPHERE_ZIMPOL_OBS043_0025.fits	SPHER.2015-02-12T01:59:07.996	19/40	OBJECT		20.0
SPHERE_ZIMPOL_OBS043_0026.fits	SPHER.2015-02-12T02:02:03.994	20/40	OBJECT		20.0
SPHERE_ZIMPOL_OBS043_0027.fits	SPHER.2015-02-12T02:04:59.568	21/40	OBJECT		20.0
SPHERE_ZIMPOL_OBS043_0028.fits	SPHER.2015-02-12T02:07:55.121	22/40	OBJECT		20.0
SPHERE_ZIMPOL_OBS043_0029.fits	SPHER.2015-02-12T02:10:50.014	23/40	OBJECT		20.0
SPHERE_ZIMPOL_OBS043_0030.fits	SPHER.2015-02-12T02:13:46.006	24/40	OBJECT		20.0
SPHERE_ZIMPOL_OBS043_0031.fits	SPHER.2015-02-12T02:16:41.606	25/40	OBJECT		20.0
SPHERE_ZIMPOL_OBS043_0032.fits	SPHER.2015-02-12T02:19:37.016	26/40	OBJECT		20.0
SPHERE_ZIMPOL_OBS043_0033.fits	SPHER.2015-02-12T02:22:32.021	27/40	OBJECT		20.0
SPHERE_ZIMPOL_OBS043_0034.fits	SPHER.2015-02-12T02:25:28.015	28/40	OBJECT		20.0

OB 1157775 | 02:28:58 > 02:37:46 | 00:08:48 | Mode: Commissioning | Loss: No Loss | Status A

Grade X

Instrument	SPHERE
-------------------	--------

Name PSF_Reference_PDI_after LkCa15
Target G85-36
PI Christian Thalmann
Run 60.A-9358(A)
Container Concatenation 1158371
Public Comments Reference star showed a elongation at the start of the OB, we removed and put back the visible ADC to solve the problem. Only the end of the sequence is usable
 12 Feb 02:37
 12 Feb 04:03 - Paranal Observatory

Files produced and additional information

OBS.ID 1157775
OBS.START 2015-02-12T02:28:58
Template SPHERE_zimpol_p2_obs

Original Filename	Archive Filename	TPLEXPNO/NEXP	DPR.TYPE	INS.FILT1.NAME	EXPTIME
SPHERE_ZIMPOL_OBS043_0035.fits	SPHER.2015-02-12T02:35:35.587	1/8	OBJECT		20.0

OB 1157775 | 02:38:55 > 02:57:18 | 00:18:23 | Mode: Commissioning | Loss: No Loss | Status X > M Grade X

Instrument SPHERE
Name PSF_Reference_PDI_after LkCa15
Target G85-36
PI Christian Thalmann
Run 60.A-9358(A)
Container Concatenation 1158371
Public Comments

Files produced and additional information

OBS.ID 1157775
OBS.START 2015-02-12T02:38:55
Template SPHERE_zimpol_p2_obs

Original Filename	Archive Filename	TPLEXPNO/NEXP	DPR.TYPE	INS.FILT1.NAME	EXPTIME
SPHERE_ZIMPOL_OBS043_0036.fits	SPHER.2015-02-12T02:39:07.139	1/8	OBJECT		10.0
SPHERE_ZIMPOL_OBS043_0037.fits	SPHER.2015-02-12T02:41:23.061	2/8	OBJECT		10.0
SPHERE_ZIMPOL_OBS043_0038.fits	SPHER.2015-02-12T02:43:38.093	3/8	OBJECT		10.0
SPHERE_ZIMPOL_OBS043_0039.fits	SPHER.2015-02-12T02:45:54.065	4/8	OBJECT		10.0
SPHERE_ZIMPOL_OBS043_0040.fits	SPHER.2015-02-12T02:48:11.306	5/8	OBJECT		10.0
SPHERE_ZIMPOL_OBS043_0041.fits	SPHER.2015-02-12T02:50:29.054	6/8	OBJECT		10.0
SPHERE_ZIMPOL_OBS043_0042.fits	SPHER.2015-02-12T02:52:44.077	7/8	OBJECT		10.0
SPHERE_ZIMPOL_OBS043_0043.fits	SPHER.2015-02-12T02:55:00.046	8/8	OBJECT		10.0

OB 1157775 | 02:57:22 > 03:08:52 | 00:11:30 | Mode: Commissioning | Loss: No Loss | Status A > C Grade B

Instrument SPHERE
Name PSF_Reference_PDI_after LkCa15
Target G85-36
PI Christian Thalmann
Run 60.A-9358(A)
Container Concatenation 1158371
Public Comments The star starts to be low, but the correction was still good.
 12 Feb 03:08

Files produced and additional information

OBS.ID 1157775
OBS.START 2015-02-12T02:57:22
Template SPHERE_zimpol_p2_obs

Original Filename	Archive Filename	TPLEXPNO/NEXP	DPR.TYPE	INS.FILT1.NAME	EXPTIME
SPHERE_ZIMPOL_OBS043_0044.fits	SPHER.2015-02-12T02:57:36.150	1/8	OBJECT		10.0
SPHERE_ZIMPOL_OBS043_0045.fits	SPHER.2015-02-12T02:59:52.079	2/8	OBJECT		10.0
SPHERE_ZIMPOL_OBS043_0046.fits	SPHER.2015-02-12T03:02:07.110	3/8	OBJECT		10.0
SPHERE_ZIMPOL_OBS043_0047.fits	SPHER.2015-02-12T03:04:23.050	4/8	OBJECT		10.0
SPHERE_ZIMPOL_OBS043_0048.fits	SPHER.2015-02-12T03:06:40.614	5/8	OBJECT		10.0

OB 1158217 | 03:10:42 > 03:25:22 | 00:14:40 | Mode: Commissioning | Loss: No Loss | Status A Grade _

Instrument SPHERE
Name HD 86006
Target HD 86006

PI Blake M. Pantoja
Run 60.A-9385(A)
Container -
Public Comments OB aborted because it was saturated.
12 Feb 03:46 - Paranal Observatory

Files produced and additional information

OBS.ID 1158217
OBS.START 2015-02-12T03:10:42

Template SPHERE_irdifs_acq

Original Filename	Archive Filename	TPL.EXPNO/NEXP	DPR.TYPE	INS.FILT1.NAME	EXPTIME
SPHERE_IRDIFS_IRDIS_CAL_DARK043_0001.fits	SPHER.2015-02-12T03:12:46.033	1/9	DARK		1.0
SPHERE_IRDIFS_IRDIS_ACQ043_0001.fits	SPHER.2015-02-12T03:13:29.961	2/9	OBJECT		1.0
SPHERE_IRDIFS_IRDIS_CAL_FLAT043_0001.fits	SPHER.2015-02-12T03:14:04.334	3/9	FLAT,LAMP		1.0
SPHERE_IRDIFS_IRDIS_CAL_DARK043_0002.fits	SPHER.2015-02-12T03:14:24.675	4/9	DARK		1.0
SPHERE_IRDIFS_IRDIS_ACQ043_0002.fits	SPHER.2015-02-12T03:15:06.067	5/9	OBJECT		1.0
SPHERE_IRDIFS_IRDIS_ACQ043_0003.fits	SPHER.2015-02-12T03:15:29.275	6/10	OBJECT		1.0
SPHERE_IRDIFS_IRDIS_ACQ043_0004.fits	SPHER.2015-02-12T03:15:50.549	7/11	OBJECT		1.0
SPHERE_IRDIFS_IRDIS_ACQ043_0005.fits	SPHER.2015-02-12T03:16:11.724	8/12	OBJECT		1.0
SPHERE_IRDIFS_IRDIS_ACQ043_0006.fits	SPHER.2015-02-12T03:16:34.035	9/13	OBJECT		1.0
SPHERE_IRDIFS_IRDIS_ACQ043_0007.fits	SPHER.2015-02-12T03:16:55.334	10/14	OBJECT		1.0
SPHERE_IRDIFS_IRDIS_ACQ043_0008.fits	SPHER.2015-02-12T03:17:16.563	11/15	OBJECT		1.0

Template SPHERE_irdifs_obs

Original Filename	Archive Filename	TPL.EXPNO/NEXP	DPR.TYPE	INS.FILT1.NAME	EXPTIME
SPHERE_IRDIFS_IFS_OBS043_0001.fits	SPHER.2015-02-12T03:22:16.381	1/44	OBJECT,CENTER		64.0
SPHERE_IRDIFS_IRDIS_OBS043_0001.fits	SPHER.2015-02-12T03:22:17.111	2/44	OBJECT,CENTER		64.0
SPHERE_IRDIFS_IFS_OBS043_0002.fits	SPHER.2015-02-12T03:24:05.882	3/44	OBJECT,FLUX		64.0
SPHERE_IRDIFS_IRDIS_OBS043_0002.fits	SPHER.2015-02-12T03:24:06.744	4/44	OBJECT,FLUX		64.0

OB 1158217 | 03:27:54 > 03:27:55 | 00:00:01 | Mode: Commissioning | Loss: No Loss | Status A Grade _

Instrument SPHERE
Name HD 86006
Target HD 86006
PI Blake M. Pantoja
Run 60.A-9385(A)
Container -
Public Comments Star saturated again
12 Feb 03:51 - Paranal Observatory

Files produced and additional information

No files produced

OB 1158217 | 03:29:47 > 03:30:32 | 00:00:45 | Mode: Commissioning | Loss: No Loss | Status X > M Grade X

Instrument SPHERE
Name HD 86006
Target HD 86006
PI Blake M. Pantoja
Run 60.A-9385(A)
Container -
Public Comments Flux sequence saturated for IRDIS but valid for the IFS
12 Feb 03:56 - Paranal Observatory

Files produced and additional information

OBS.ID 1158217
OBS.START 2015-02-12T03:29:47

Template SPHERE_irdifs_obs

Original Filename	Archive Filename	TPL.EXPNO/NEXP	DPR.TYPE	INS.FILT1.NAME	EXPTIME
SPHERE_IRDIFS_IFS_OBS043_0003.fits	SPHER.2015-02-12T03:30:14.440	1/2	OBJECT,FLUX		2.0
SPHERE_IRDIFS_IRDIS_OBS043_0003.fits	SPHER.2015-02-12T03:30:15.229	2/2	OBJECT,FLUX		10.0

OB 1158217 | 03:33:57 > 03:34:39 | 00:00:42 | Mode: Commissioning | Loss: No Loss | Status X > M Grade X

Instrument SPHERE
Name HD 86006
Target HD 86006
PI Blake M. Pantoja

Run 60.A-9385(A)
Container -
Public Comments Flux sequence unsaturated for Irdis but with low counts for the IFS
12 Feb 03:56 - Paranal Observatory

Files produced and additional information

OBS.ID 1158217
OBS.START 2015-02-12T03:33:57

Template SPHERE_irdifs_obs

Original Filename	Archive Filename	TPL.EXPNO/NEXP	DPR.TYPE	INS.FILT1.NAME	EXPTIME
SPHERE_IRDIFS_IFS_OBS043_0004.fits	SPHER.2015-02-12T03:34:24.455	1/2	OBJECT,FLUX		2.0
SPHERE_IRDIFS_IRDIS_OBS043_0004.fits	SPHER.2015-02-12T03:34:25.320	2/2	OBJECT,FLUX		2.0

OB 1158217 | 03:38:02 > 03:46:52 | 00:08:50 | Mode: Commissioning | Loss: No Loss | Status A Grade X

Instrument SPHERE
Name HD 86006
Target HD 86006
PI Blake M. Pantoja
Run 60.A-9385(A)
Container -
Public Comments The OB was aborted because the companion is saturated and the observing mode was field stabilized which does not allow any speckle calibration and star subtraction
12 Feb 03:46
12 Feb 03:55 - Paranal Observatory

Files produced and additional information

OBS.ID 1158217
OBS.START 2015-02-12T03:38:02

Template SPHERE_irdifs_obs

Original Filename	Archive Filename	TPL.EXPNO/NEXP	DPR.TYPE	INS.FILT1.NAME	EXPTIME
SPHERE_IRDIFS_IFS_OBS043_0005.fits	SPHER.2015-02-12T03:38:26.025	1/42	OBJECT,CENTER		64.0
SPHERE_IRDIFS_IRDIS_OBS043_0005.fits	SPHER.2015-02-12T03:38:26.842	2/42	OBJECT,CENTER		32.0
SPHERE_IRDIFS_IFS_OBS043_0006.fits	SPHER.2015-02-12T03:39:58.118	3/42	OBJECT		64.0
SPHERE_IRDIFS_IRDIS_OBS043_0006.fits	SPHER.2015-02-12T03:39:58.955	4/42	OBJECT		32.0
SPHERE_IRDIFS_IFS_OBS043_0007.fits	SPHER.2015-02-12T03:42:15.892	5/42	OBJECT		64.0
SPHERE_IRDIFS_IRDIS_OBS043_0007.fits	SPHER.2015-02-12T03:42:16.788	6/42	OBJECT		32.0
SPHERE_IRDIFS_IFS_OBS043_0008.fits	SPHER.2015-02-12T03:44:33.889	7/42	OBJECT		64.0
SPHERE_IRDIFS_IRDIS_OBS043_0008.fits	SPHER.2015-02-12T03:44:34.923	8/42	OBJECT		32.0

OB 1158217 | 03:48:54 > 03:48:56 | 00:00:02 | Mode: Commissioning | Loss: No Loss | Status A Grade _

Instrument SPHERE
Name HD 86006
Target HD 86006
PI Blake M. Pantoja
Run 60.A-9385(A)
Container -
Public Comments
12 Feb 03:57 - Paranal Observatory

Files produced and additional information

No files produced

OB 1158217 | 03:50:02 > 04:40:23 | 00:50:21 | Mode: Commissioning | Loss: No Loss | Status X > C Grade B

Instrument SPHERE
Name HD 86006
Target HD 86006
PI Blake M. Pantoja
Run 60.A-9385(A)
Container -
Public Comments The seeing was about 1arcsec and degraded towards the end.We had to adjust the DIT of irdis and the IFS to avoid strong saturation of the secondary component. The mode was changed to pupil tracking to allow speckle calibration.
12 Feb 05:28

Files produced and additional information

OBS.ID 1158217
OBS.START 2015-02-12T03:50:02

Template SPHERE_irdifs_obs

Original Filename	Archive Filename	TPL.EXPNO/NEXP	DPR.TYPE	INS.FILT1.NAME	EXPTIME
SPHERE_IRDIFS_IFS_OBS043_0009.fits	SPHER.2015-02-12T03:50:16.923	1/42	OBJECT,CENTER		32.0
SPHERE_IRDIFS_IRDIS_OBS043_0009.fits	SPHER.2015-02-12T03:50:17.776	2/42	OBJECT,CENTER		8.0
SPHERE_IRDIFS_IFS_OBS043_0010.fits	SPHER.2015-02-12T03:51:06.810	3/42	OBJECT		32.0
SPHERE_IRDIFS_IRDIS_OBS043_0010.fits	SPHER.2015-02-12T03:51:07.591	4/42	OBJECT		8.0
SPHERE_IRDIFS_IFS_OBS043_0011.fits	SPHER.2015-02-12T03:53:27.948	5/42	OBJECT		32.0
SPHERE_IRDIFS_IRDIS_OBS043_0011.fits	SPHER.2015-02-12T03:53:34.170	6/42	OBJECT		8.0
SPHERE_IRDIFS_IFS_OBS043_0012.fits	SPHER.2015-02-12T03:55:48.020	7/42	OBJECT		32.0
SPHERE_IRDIFS_IRDIS_OBS043_0012.fits	SPHER.2015-02-12T03:56:01.304	8/42	OBJECT		8.0
SPHERE_IRDIFS_IFS_OBS043_0013.fits	SPHER.2015-02-12T03:58:08.102	9/42	OBJECT		32.0
SPHERE_IRDIFS_IRDIS_OBS043_0013.fits	SPHER.2015-02-12T03:58:27.901	10/42	OBJECT		8.0
SPHERE_IRDIFS_IFS_OBS043_0014.fits	SPHER.2015-02-12T04:00:28.157	11/42	OBJECT		32.0
SPHERE_IRDIFS_IRDIS_OBS043_0014.fits	SPHER.2015-02-12T04:00:55.037	12/42	OBJECT		8.0
SPHERE_IRDIFS_IFS_OBS043_0015.fits	SPHER.2015-02-12T04:02:48.824	13/42	OBJECT		32.0
SPHERE_IRDIFS_IRDIS_OBS043_0015.fits	SPHER.2015-02-12T04:03:22.391	14/42	OBJECT		8.0
SPHERE_IRDIFS_IFS_OBS043_0016.fits	SPHER.2015-02-12T04:05:09.255	15/42	OBJECT		32.0
SPHERE_IRDIFS_IRDIS_OBS043_0016.fits	SPHER.2015-02-12T04:05:49.544	16/42	OBJECT		8.0
SPHERE_IRDIFS_IFS_OBS043_0017.fits	SPHER.2015-02-12T04:07:29.308	17/42	OBJECT		32.0
SPHERE_IRDIFS_IRDIS_OBS043_0017.fits	SPHER.2015-02-12T04:08:16.156	18/42	OBJECT		8.0
SPHERE_IRDIFS_IFS_OBS043_0018.fits	SPHER.2015-02-12T04:09:49.447	19/42	OBJECT		32.0
SPHERE_IRDIFS_IRDIS_OBS043_0018.fits	SPHER.2015-02-12T04:10:42.689	20/42	OBJECT		8.0
SPHERE_IRDIFS_IFS_OBS043_0019.fits	SPHER.2015-02-12T04:12:08.503	21/42	OBJECT		32.0
SPHERE_IRDIFS_IRDIS_OBS043_0019.fits	SPHER.2015-02-12T04:13:11.010	22/42	OBJECT		8.0
SPHERE_IRDIFS_IFS_OBS043_0020.fits	SPHER.2015-02-12T04:14:28.694	23/42	OBJECT		32.0
SPHERE_IRDIFS_IRDIS_OBS043_0020.fits	SPHER.2015-02-12T04:15:38.622	24/42	OBJECT		8.0
SPHERE_IRDIFS_IFS_OBS043_0021.fits	SPHER.2015-02-12T04:16:47.731	25/42	OBJECT		32.0
SPHERE_IRDIFS_IRDIS_OBS043_0021.fits	SPHER.2015-02-12T04:18:06.388	26/42	OBJECT		8.0
SPHERE_IRDIFS_IFS_OBS043_0022.fits	SPHER.2015-02-12T04:19:07.829	27/42	OBJECT		32.0
SPHERE_IRDIFS_IRDIS_OBS043_0022.fits	SPHER.2015-02-12T04:20:33.967	28/42	OBJECT		8.0
SPHERE_IRDIFS_IFS_OBS043_0023.fits	SPHER.2015-02-12T04:21:28.134	29/42	OBJECT		32.0
SPHERE_IRDIFS_IRDIS_OBS043_0023.fits	SPHER.2015-02-12T04:23:01.610	30/42	OBJECT		8.0
SPHERE_IRDIFS_IFS_OBS043_0024.fits	SPHER.2015-02-12T04:23:47.257	31/42	OBJECT		32.0
SPHERE_IRDIFS_IRDIS_OBS043_0024.fits	SPHER.2015-02-12T04:25:29.960	32/42	OBJECT		8.0
SPHERE_IRDIFS_IFS_OBS043_0025.fits	SPHER.2015-02-12T04:26:06.354	33/42	OBJECT		32.0
SPHERE_IRDIFS_IRDIS_OBS043_0025.fits	SPHER.2015-02-12T04:27:58.224	34/42	OBJECT		8.0
SPHERE_IRDIFS_IFS_OBS043_0026.fits	SPHER.2015-02-12T04:28:25.443	35/42	OBJECT		32.0
SPHERE_IRDIFS_IRDIS_OBS043_0026.fits	SPHER.2015-02-12T04:30:25.938	36/42	OBJECT		8.0
SPHERE_IRDIFS_IFS_OBS043_0027.fits	SPHER.2015-02-12T04:30:44.550	37/42	OBJECT		32.0
SPHERE_IRDIFS_IRDIS_OBS043_0027.fits	SPHER.2015-02-12T04:32:54.322	38/42	OBJECT		8.0
SPHERE_IRDIFS_IFS_OBS043_0028.fits	SPHER.2015-02-12T04:33:04.544	39/42	OBJECT		32.0
SPHERE_IRDIFS_IFS_OBS043_0029.fits	SPHER.2015-02-12T04:35:24.700	40/42	OBJECT		32.0
SPHERE_IRDIFS_IRDIS_OBS043_0028.fits	SPHER.2015-02-12T04:35:25.522	41/42	OBJECT		8.0
SPHERE_IRDIFS_IRDIS_OBS043_0029.fits	SPHER.2015-02-12T04:37:54.209	42/42	OBJECT		8.0

OB 1103473 | 05:14:34 > 06:30:28 | 01:15:54 | Mode: Service | Loss: No Loss | Status X > C

Grade A

Instrument VIMOS
Name MOS_P4-mask2_2
Target Pointing4-mask2
PI Stephanie Juneau
Run 093.A-0910(B)
Container -
Public Comments Seeing of 0.6"-0.7" on the spectra. Attached calibrations ok. All other constraints met.
12 Feb 07:40

Files produced and additional information

OBS.ID 1103473
OBS.START 2015-02-12T05:14:34
Template VIMOS_mos_acq_Mask
Data Product CALIB/LAMP,AFC/IMAGE
CCD 225kHz,1port,HG,AFC/1x1/2048x400
Lamps Afc

Original Filename	Archive Filename	Grism	Filter	INS.ADF.ID	DET.OUT1.CONAD	EXPTIME
VIMOS_IMG_AFC043_0001_B.4.fits	VIMOS.2015-02-12T05:20:29.687	Free	R		0.54 e-/adu	1.996
VIMOS_IMG_AFC043_0001_B.1.fits	VIMOS.2015-02-12T05:20:29.688	Free	R		0.53 e-/adu	1.996
VIMOS_IMG_AFC043_0001_A.2.fits	VIMOS.2015-02-12T05:20:29.689	Free	R		0.55 e-/adu	1.997
VIMOS_IMG_AFC043_0001_A.3.fits	VIMOS.2015-02-12T05:20:29.690	Free	R		0.56 e-/adu	1.997

VIMOS_IMG_AFC043_0002_B.4.fits VIMOS.2015-02-12T05:20:58.431 Free R 0.54 e-/adu 1.994
 VIMOS_IMG_AFC043_0002_B.1.fits VIMOS.2015-02-12T05:20:58.430 Free R 0.53 e-/adu 1.994
 VIMOS_IMG_AFC043_0002_A.3.fits VIMOS.2015-02-12T05:20:58.432 Free R 0.56 e-/adu 1.997
 VIMOS_IMG_AFC043_0002_A.2.fits VIMOS.2015-02-12T05:20:58.433 Free R 0.55 e-/adu 1.997

Template VIMOS_mos_acq_Mask

Data Product ACQUISITION/SLIT,OBJECT/IMAGE

CCD 225kHz, 1port,LG/1x1/2048x2440

Original Filename	Archive Filename	Grism	Filter	INS.ADF.ID	DET.OUT1.CONAD	EXPTIME
VIMOS_MOS_SLIT043_0001_B.4.fits	VIMOS.2015-02-12T05:24:44.696	Free	R	P4bQ4_final_vm_MR_M1Q4.adp	1.79 e-/adu	29.996
VIMOS_MOS_SLIT043_0001_B.1.fits	VIMOS.2015-02-12T05:24:44.697	Free	R	P4bQ1_final_vm_MR_M1Q1.adp	1.75 e-/adu	29.996
VIMOS_MOS_SLIT043_0001_A.2.fits	VIMOS.2015-02-12T05:24:44.700	Free	R	P4bQ2_final_vm_MR_M1Q2.adp	1.81 e-/adu	30.0
VIMOS_MOS_SLIT043_0001_A.3.fits	VIMOS.2015-02-12T05:24:44.701	Free	R	P4bQ3_final_vm_MR_M1Q3.adp	1.81 e-/adu	30.0
VIMOS_MOS_SLIT043_0002_A.2.fits	VIMOS.2015-02-12T05:27:46.353	Free	R	P4bQ2_final_vm_MR_M1Q2.adp	1.81 e-/adu	30.0
VIMOS_MOS_SLIT043_0002_A.3.fits	VIMOS.2015-02-12T05:27:46.352	Free	R	P4bQ3_final_vm_MR_M1Q3.adp	1.81 e-/adu	30.0
VIMOS_MOS_SLIT043_0002_B.1.fits	VIMOS.2015-02-12T05:27:46.359	Free	R	P4bQ1_final_vm_MR_M1Q1.adp	1.75 e-/adu	29.994
VIMOS_MOS_SLIT043_0002_B.4.fits	VIMOS.2015-02-12T05:27:46.358	Free	R	P4bQ4_final_vm_MR_M1Q4.adp	1.79 e-/adu	29.994

Template VIMOS_mos_obs_Offset

Data Product SCIENCE/OBJECT/MOS

CCD 225kHz, 1port,HG/1x1/2048x4096

Airmass 1.121

DIMM 1.05

Original Filename	Archive Filename	Grism	Filter	INS.ADF.ID	DET.OUT1.CONAD	EXPTIME
VIMOS_MOS_OBS043_0001_A.3.fits	VIMOS.2015-02-12T05:33:58.138	MR	GG475	P4bQ3_final_vm_MR_M1Q3.adp	0.56 e-/adu	524.997
VIMOS_MOS_OBS043_0001_A.2.fits	VIMOS.2015-02-12T05:33:58.137	MR	GG475	P4bQ2_final_vm_MR_M1Q2.adp	0.6 e-/adu	524.997
VIMOS_MOS_OBS043_0001_B.1.fits	VIMOS.2015-02-12T05:33:58.140	MR	GG475	P4bQ1_final_vm_MR_M1Q1.adp	0.55 e-/adu	524.994
VIMOS_MOS_OBS043_0001_B.4.fits	VIMOS.2015-02-12T05:33:58.141	MR	GG475	P4bQ4_final_vm_MR_M1Q4.adp	0.57 e-/adu	524.994
VIMOS_MOS_OBS043_0002_A.3.fits	VIMOS.2015-02-12T05:43:47.882	MR	GG475	P4bQ3_final_vm_MR_M1Q3.adp	0.56 e-/adu	524.998
VIMOS_MOS_OBS043_0002_B.4.fits	VIMOS.2015-02-12T05:43:47.879	MR	GG475	P4bQ4_final_vm_MR_M1Q4.adp	0.57 e-/adu	524.993
VIMOS_MOS_OBS043_0002_A.2.fits	VIMOS.2015-02-12T05:43:47.881	MR	GG475	P4bQ2_final_vm_MR_M1Q2.adp	0.6 e-/adu	524.998
VIMOS_MOS_OBS043_0002_B.1.fits	VIMOS.2015-02-12T05:43:47.880	MR	GG475	P4bQ1_final_vm_MR_M1Q1.adp	0.55 e-/adu	524.993
VIMOS_MOS_OBS043_0003_B.4.fits	VIMOS.2015-02-12T05:53:36.858	MR	GG475	P4bQ4_final_vm_MR_M1Q4.adp	0.57 e-/adu	524.993
VIMOS_MOS_OBS043_0003_B.1.fits	VIMOS.2015-02-12T05:53:36.857	MR	GG475	P4bQ1_final_vm_MR_M1Q1.adp	0.55 e-/adu	524.993
VIMOS_MOS_OBS043_0003_A.2.fits	VIMOS.2015-02-12T05:53:36.862	MR	GG475	P4bQ2_final_vm_MR_M1Q2.adp	0.6 e-/adu	524.995
VIMOS_MOS_OBS043_0003_A.3.fits	VIMOS.2015-02-12T05:53:36.861	MR	GG475	P4bQ3_final_vm_MR_M1Q3.adp	0.56 e-/adu	524.995
VIMOS_MOS_OBS043_0004_B.1.fits	VIMOS.2015-02-12T06:03:26.836	MR	GG475	P4bQ1_final_vm_MR_M1Q1.adp	0.55 e-/adu	524.994
VIMOS_MOS_OBS043_0004_B.4.fits	VIMOS.2015-02-12T06:03:26.837	MR	GG475	P4bQ4_final_vm_MR_M1Q4.adp	0.57 e-/adu	524.994
VIMOS_MOS_OBS043_0004_A.2.fits	VIMOS.2015-02-12T06:03:26.843	MR	GG475	P4bQ2_final_vm_MR_M1Q2.adp	0.6 e-/adu	524.999
VIMOS_MOS_OBS043_0004_A.3.fits	VIMOS.2015-02-12T06:03:26.844	MR	GG475	P4bQ3_final_vm_MR_M1Q3.adp	0.56 e-/adu	524.999
VIMOS_MOS_OBS043_0005_A.2.fits	VIMOS.2015-02-12T06:13:17.838	MR	GG475	P4bQ2_final_vm_MR_M1Q2.adp	0.6 e-/adu	524.999
VIMOS_MOS_OBS043_0005_A.3.fits	VIMOS.2015-02-12T06:13:17.836	MR	GG475	P4bQ3_final_vm_MR_M1Q3.adp	0.56 e-/adu	524.999
VIMOS_MOS_OBS043_0005_B.4.fits	VIMOS.2015-02-12T06:13:17.837	MR	GG475	P4bQ4_final_vm_MR_M1Q4.adp	0.57 e-/adu	524.994
VIMOS_MOS_OBS043_0005_B.1.fits	VIMOS.2015-02-12T06:13:17.835	MR	GG475	P4bQ1_final_vm_MR_M1Q1.adp	0.55 e-/adu	524.994

Template VIMOS_mos_cal_NightCalib

Data Product CALIB/FLAT,LAMP/MOS

CCD 225kHz, 1port,HG/1x1/2048x4096

Lamps QTH10

Original Filename	Archive Filename	Grism	Filter	INS.ADF.ID	DET.OUT1.CONAD	EXPTIME
VIMOS_MOS_LAMP043_0001_B.1.fits	VIMOS.2015-02-12T06:25:01.527	MR	GG475	P4bQ1_final_vm_MR_M1Q1.adp	0.55 e-/adu	11.993
VIMOS_MOS_LAMP043_0001_B.4.fits	VIMOS.2015-02-12T06:25:01.528	MR	GG475	P4bQ4_final_vm_MR_M1Q4.adp	0.57 e-/adu	11.993
VIMOS_MOS_LAMP043_0001_A.3.fits	VIMOS.2015-02-12T06:25:01.540	MR	GG475	P4bQ3_final_vm_MR_M1Q3.adp	0.56 e-/adu	11.996
VIMOS_MOS_LAMP043_0001_A.2.fits	VIMOS.2015-02-12T06:25:01.541	MR	GG475	P4bQ2_final_vm_MR_M1Q2.adp	0.6 e-/adu	11.996
VIMOS_MOS_LAMP043_0002_B.4.fits	VIMOS.2015-02-12T06:26:13.285	MR	GG475	P4bQ4_final_vm_MR_M1Q4.adp	0.57 e-/adu	11.993
VIMOS_MOS_LAMP043_0002_B.1.fits	VIMOS.2015-02-12T06:26:13.284	MR	GG475	P4bQ1_final_vm_MR_M1Q1.adp	0.55 e-/adu	11.993
VIMOS_MOS_LAMP043_0002_A.3.fits	VIMOS.2015-02-12T06:26:13.291	MR	GG475	P4bQ3_final_vm_MR_M1Q3.adp	0.56 e-/adu	11.994
VIMOS_MOS_LAMP043_0002_A.2.fits	VIMOS.2015-02-12T06:26:13.290	MR	GG475	P4bQ2_final_vm_MR_M1Q2.adp	0.6 e-/adu	11.994
VIMOS_MOS_LAMP043_0003_B.1.fits	VIMOS.2015-02-12T06:27:25.344	MR	GG475	P4bQ1_final_vm_MR_M1Q1.adp	0.55 e-/adu	11.993
VIMOS_MOS_LAMP043_0003_B.4.fits	VIMOS.2015-02-12T06:27:25.343	MR	GG475	P4bQ4_final_vm_MR_M1Q4.adp	0.57 e-/adu	11.993
VIMOS_MOS_LAMP043_0003_A.3.fits	VIMOS.2015-02-12T06:27:25.348	MR	GG475	P4bQ3_final_vm_MR_M1Q3.adp	0.56 e-/adu	11.999
VIMOS_MOS_LAMP043_0003_A.2.fits	VIMOS.2015-02-12T06:27:25.349	MR	GG475	P4bQ2_final_vm_MR_M1Q2.adp	0.6 e-/adu	11.999

Template VIMOS_mos_cal_NightCalib

Data Product CALIB/WAVE,LAMP/MOS

CCD 225kHz, 1port,HG/1x1/2048x4096

Lamps He / Ar

Original Filename	Archive Filename	Grism	Filter	INS.ADF.ID	DET.OUT1.CONAD	EXPTIME
VIMOS_MOS_WAVE043_0001_A.2.fits	VIMOS.2015-02-12T06:28:33.678	MR	GG475	P4bQ2_final_vm_MR_M1Q2.adp	0.6 e-/adu	9.988

VIMOS_MOS_WAVE043_0001_A.3.fits VIMOS.2015-02-12T06:28:33.677 MR GG475 P4bQ3_final_vm_MR_M1Q3.adp 0.56 e-/adu 9.988
 VIMOS_MOS_WAVE043_0001_B.1.fits VIMOS.2015-02-12T06:28:33.682 MR GG475 P4bQ1_final_vm_MR_M1Q1.adp 0.55 e-/adu 9.976
 VIMOS_MOS_WAVE043_0001_B.4.fits VIMOS.2015-02-12T06:28:33.681 MR GG475 P4bQ4_final_vm_MR_M1Q4.adp 0.57 e-/adu 9.976

OB 968129 | 06:30:41 > 08:00:15 | 01:29:34 | Mode: Service | Loss: No Loss | Status X > C

Grade A

Instrument VIMOS
Name MOS_MR_VCC1154_S
Target VCC1154
PI T.H. Puzia
Run 090.B-0498(B)
Container Group 968116
Public Comments Seeing of 0.6"-0.7" on the spectra. Attached calibrations ok. All other constraints met.
 12 Feb 08:00

Files produced and additional information

OBS.ID 968129
OBS.START 2015-02-12T06:30:41
Template VIMOS_mos_acq_Mask
Data Product CALIB/LAMP,AFC/IMAGE
CCD 225kHz,1port,HG,AFC/1x1/2048x400
Lamps Afc

Original Filename	Archive Filename	Grism	Filter	INS.ADF.ID	DET.OUT1.CONAD	EXPTIME
VIMOS_IMG_AFC043_0003_A.2.fits	VIMOS.2015-02-12T06:39:56.900	Free	R	VCC1154_SQ2_contributed_vm_MR_	0.55 e-/adu	1.997
VIMOS_IMG_AFC043_0003_A.3.fits	VIMOS.2015-02-12T06:39:56.899	Free	R	VCC1154_SQ3_contributed_vm_MR_	0.56 e-/adu	1.997
VIMOS_IMG_AFC043_0003_B.4.fits	VIMOS.2015-02-12T06:39:56.902	Free	R	VCC1154_SQ4_contributed_vm_MR_	0.54 e-/adu	1.996
VIMOS_IMG_AFC043_0003_B.1.fits	VIMOS.2015-02-12T06:39:56.901	Free	R	VCC1154_SQ1_contributed_vm_MR_	0.53 e-/adu	1.996
VIMOS_IMG_AFC043_0004_A.3.fits	VIMOS.2015-02-12T06:40:26.423	Free	R	VCC1154_SQ3_contributed_vm_MR_	0.56 e-/adu	2.001
VIMOS_IMG_AFC043_0004_A.2.fits	VIMOS.2015-02-12T06:40:26.424	Free	R	VCC1154_SQ2_contributed_vm_MR_	0.55 e-/adu	2.001
VIMOS_IMG_AFC043_0004_B.4.fits	VIMOS.2015-02-12T06:40:26.425	Free	R	VCC1154_SQ4_contributed_vm_MR_	0.54 e-/adu	1.995
VIMOS_IMG_AFC043_0004_B.1.fits	VIMOS.2015-02-12T06:40:26.426	Free	R	VCC1154_SQ1_contributed_vm_MR_	0.53 e-/adu	1.995

Template VIMOS_mos_acq_Mask
Data Product ACQUISITION/SLIT,OBJECT/IMAGE
CCD 225kHz,1port,LG/1x1/2048x2440

Original Filename	Archive Filename	Grism	Filter	INS.ADF.ID	DET.OUT1.CONAD	EXPTIME
VIMOS_MOS_SLIT043_0003_B.4.fits	VIMOS.2015-02-12T06:40:48.507	Free	R	VCC1154_SQ4_contributed_vm_MR_	1.79 e-/adu	59.994
VIMOS_MOS_SLIT043_0003_A.3.fits	VIMOS.2015-02-12T06:40:48.508	Free	R	VCC1154_SQ3_contributed_vm_MR_	1.81 e-/adu	59.999
VIMOS_MOS_SLIT043_0003_B.1.fits	VIMOS.2015-02-12T06:40:48.506	Free	R	VCC1154_SQ1_contributed_vm_MR_	1.75 e-/adu	59.994
VIMOS_MOS_SLIT043_0003_A.2.fits	VIMOS.2015-02-12T06:40:48.509	Free	R	VCC1154_SQ2_contributed_vm_MR_	1.81 e-/adu	59.999
VIMOS_MOS_SLIT043_0004_A.2.fits	VIMOS.2015-02-12T06:43:06.854	Free	R	VCC1154_SQ2_contributed_vm_MR_	1.81 e-/adu	60.006
VIMOS_MOS_SLIT043_0004_B.1.fits	VIMOS.2015-02-12T06:43:06.852	Free	R	VCC1154_SQ1_contributed_vm_MR_	1.75 e-/adu	59.996
VIMOS_MOS_SLIT043_0004_B.4.fits	VIMOS.2015-02-12T06:43:06.853	Free	R	VCC1154_SQ4_contributed_vm_MR_	1.79 e-/adu	59.996
VIMOS_MOS_SLIT043_0004_A.3.fits	VIMOS.2015-02-12T06:43:06.855	Free	R	VCC1154_SQ3_contributed_vm_MR_	1.81 e-/adu	60.006

Template VIMOS_mos_obs_Offset
Data Product SCIENCE/OBJECT/MOS
CCD 225kHz,1port,HG/1x1/2048x4096
Airmass 1.333
DIMM 0.82

Original Filename	Archive Filename	Grism	Filter	INS.ADF.ID	DET.OUT1.CONAD	EXPTIME
VIMOS_MOS_OBS043_0006_A.3.fits	VIMOS.2015-02-12T06:49:20.849	MR	GG475	VCC1154_SQ3_contributed_vm_MR_	0.56 e-/adu	1200.0
VIMOS_MOS_OBS043_0006_A.2.fits	VIMOS.2015-02-12T06:49:20.848	MR	GG475	VCC1154_SQ2_contributed_vm_MR_	0.6 e-/adu	1200.0
VIMOS_MOS_OBS043_0006_B.1.fits	VIMOS.2015-02-12T06:49:20.856	MR	GG475	VCC1154_SQ1_contributed_vm_MR_	0.55 e-/adu	1199.994
VIMOS_MOS_OBS043_0006_B.4.fits	VIMOS.2015-02-12T06:49:20.855	MR	GG475	VCC1154_SQ4_contributed_vm_MR_	0.57 e-/adu	1199.994
VIMOS_MOS_OBS043_0007_A.3.fits	VIMOS.2015-02-12T07:10:18.221	MR	GG475	VCC1154_SQ3_contributed_vm_MR_	0.56 e-/adu	1200.0
VIMOS_MOS_OBS043_0007_A.2.fits	VIMOS.2015-02-12T07:10:18.220	MR	GG475	VCC1154_SQ2_contributed_vm_MR_	0.6 e-/adu	1200.0
VIMOS_MOS_OBS043_0007_B.4.fits	VIMOS.2015-02-12T07:10:18.223	MR	GG475	VCC1154_SQ4_contributed_vm_MR_	0.57 e-/adu	1199.995
VIMOS_MOS_OBS043_0007_B.1.fits	VIMOS.2015-02-12T07:10:18.222	MR	GG475	VCC1154_SQ1_contributed_vm_MR_	0.55 e-/adu	1199.995
VIMOS_MOS_OBS043_0008_A.2.fits	VIMOS.2015-02-12T07:31:13.311	MR	GG475	VCC1154_SQ2_contributed_vm_MR_	0.6 e-/adu	1199.998
VIMOS_MOS_OBS043_0008_A.3.fits	VIMOS.2015-02-12T07:31:13.310	MR	GG475	VCC1154_SQ3_contributed_vm_MR_	0.56 e-/adu	1199.998
VIMOS_MOS_OBS043_0008_B.4.fits	VIMOS.2015-02-12T07:31:13.315	MR	GG475	VCC1154_SQ4_contributed_vm_MR_	0.57 e-/adu	1199.994
VIMOS_MOS_OBS043_0008_B.1.fits	VIMOS.2015-02-12T07:31:13.316	MR	GG475	VCC1154_SQ1_contributed_vm_MR_	0.55 e-/adu	1199.994

Template VIMOS_mos_cal_NightCalib
Data Product CALIB/FLAT,LAMP/MOS
CCD 225kHz,1port,HG/1x1/2048x4096
Lamps QTH10

Original Filename	Archive Filename	Grism	Filter	INS.ADF.ID	DET.OUT1.CONAD	EXPTIME
VIMOS_MOS_LAMP043_0004_A.2.fits	VIMOS.2015-02-12T07:54:45.750	MR	GG475	VCC1154_SQ2_contributed_vm_MR_	0.6 e-/adu	11.999
VIMOS_MOS_LAMP043_0004_A.3.fits	VIMOS.2015-02-12T07:54:45.751	MR	GG475	VCC1154_SQ3_contributed_vm_MR_	0.56 e-/adu	11.999
VIMOS_MOS_LAMP043_0004_B.4.fits	VIMOS.2015-02-12T07:54:45.757	MR	GG475	VCC1154_SQ4_contributed_vm_MR_	0.57 e-/adu	11.993
VIMOS_MOS_LAMP043_0004_B.1.fits	VIMOS.2015-02-12T07:54:45.758	MR	GG475	VCC1154_SQ1_contributed_vm_MR_	0.55 e-/adu	11.993
VIMOS_MOS_LAMP043_0005_A.3.fits	VIMOS.2015-02-12T07:55:57.268	MR	GG475	VCC1154_SQ3_contributed_vm_MR_	0.56 e-/adu	11.997
VIMOS_MOS_LAMP043_0005_A.2.fits	VIMOS.2015-02-12T07:55:57.269	MR	GG475	VCC1154_SQ2_contributed_vm_MR_	0.6 e-/adu	11.997
VIMOS_MOS_LAMP043_0005_B.4.fits	VIMOS.2015-02-12T07:55:57.275	MR	GG475	VCC1154_SQ4_contributed_vm_MR_	0.57 e-/adu	11.994
VIMOS_MOS_LAMP043_0005_B.1.fits	VIMOS.2015-02-12T07:55:57.274	MR	GG475	VCC1154_SQ1_contributed_vm_MR_	0.55 e-/adu	11.994
VIMOS_MOS_LAMP043_0006_B.4.fits	VIMOS.2015-02-12T07:57:11.273	MR	GG475	VCC1154_SQ4_contributed_vm_MR_	0.57 e-/adu	11.994
VIMOS_MOS_LAMP043_0006_B.1.fits	VIMOS.2015-02-12T07:57:11.274	MR	GG475	VCC1154_SQ1_contributed_vm_MR_	0.55 e-/adu	11.994
VIMOS_MOS_LAMP043_0006_A.3.fits	VIMOS.2015-02-12T07:57:11.279	MR	GG475	VCC1154_SQ3_contributed_vm_MR_	0.56 e-/adu	11.997
VIMOS_MOS_LAMP043_0006_A.2.fits	VIMOS.2015-02-12T07:57:11.278	MR	GG475	VCC1154_SQ2_contributed_vm_MR_	0.6 e-/adu	11.997

Template VIMOS_mos_cal_NightCalib

Data Product CALIB/WAVE,LAMP/MOS

CCD 225kHz,1port,HG/1x1/2048x4096

Lamps He / Ar

Original Filename	Archive Filename	Grism	Filter	INS.ADF.ID	DET.OUT1.CONAD	EXPTIME
VIMOS_MOS_WAVE043_0002_A.2.fits	VIMOS.2015-02-12T07:58:21.637	MR	GG475	VCC1154_SQ2_contributed_vm_MR_	0.6 e-/adu	9.994
VIMOS_MOS_WAVE043_0002_A.3.fits	VIMOS.2015-02-12T07:58:21.636	MR	GG475	VCC1154_SQ3_contributed_vm_MR_	0.56 e-/adu	9.994
VIMOS_MOS_WAVE043_0002_B.4.fits	VIMOS.2015-02-12T07:58:21.641	MR	GG475	VCC1154_SQ4_contributed_vm_MR_	0.57 e-/adu	9.98
VIMOS_MOS_WAVE043_0002_B.1.fits	VIMOS.2015-02-12T07:58:21.642	MR	GG475	VCC1154_SQ1_contributed_vm_MR_	0.55 e-/adu	9.98

OB 200258954 | 08:04:05 > 08:26:47 | 00:22:42 | Mode: Service | Loss: No Loss | Status X > M

Grade X

Instrument VIMOS
Name MOS SpecPhot MR Feige67 SH
Target Feige-67
PI VIMOS team
Run 60.A-9050(A)

Container -

Public Comments

Files produced and additional information

OBS.ID 200258954

OBS.START 2015-02-12T08:04:05

Template VIMOS_mos_acq_Standard

Data Product CALIB/LAMP,AFC/IMAGE

CCD 225kHz,1port,HG,AFC/1x1/2048x400

Lamps Afc

Original Filename	Archive Filename	Grism	Filter	INS.ADF.ID	DET.OUT1.CONAD	EXPTIME
VIMOS_IMG_AFC043_0005_B.1.fits	VIMOS.2015-02-12T08:13:27.228	Free	R	Cal_mos_flux-1mod6.adp	0.53 e-/adu	1.994
VIMOS_IMG_AFC043_0005_B.4.fits	VIMOS.2015-02-12T08:13:27.227	Free	R	Cal_mos_flux-4mod6.adp	0.54 e-/adu	1.994
VIMOS_IMG_AFC043_0005_A.3.fits	VIMOS.2015-02-12T08:13:27.226	Free	R	Cal_mos_flux-3mod6.adp	0.56 e-/adu	1.996
VIMOS_IMG_AFC043_0005_A.2.fits	VIMOS.2015-02-12T08:13:27.225	Free	R	Cal_mos_flux-2mod6.adp	0.55 e-/adu	1.996
VIMOS_IMG_AFC043_0006_B.4.fits	VIMOS.2015-02-12T08:13:58.421	Free	R	Cal_mos_flux-4mod6.adp	0.54 e-/adu	1.993
VIMOS_IMG_AFC043_0006_A.2.fits	VIMOS.2015-02-12T08:13:58.419	Free	R	Cal_mos_flux-2mod6.adp	0.55 e-/adu	1.998
VIMOS_IMG_AFC043_0006_A.3.fits	VIMOS.2015-02-12T08:13:58.418	Free	R	Cal_mos_flux-3mod6.adp	0.56 e-/adu	1.998
VIMOS_IMG_AFC043_0006_B.1.fits	VIMOS.2015-02-12T08:13:58.420	Free	R	Cal_mos_flux-1mod6.adp	0.53 e-/adu	1.993
VIMOS_IMG_AFC043_0007_B.1.fits	VIMOS.2015-02-12T08:14:27.434	Free	R	Cal_mos_flux-1mod6.adp	0.53 e-/adu	1.994
VIMOS_IMG_AFC043_0007_A.2.fits	VIMOS.2015-02-12T08:14:27.433	Free	R	Cal_mos_flux-2mod6.adp	0.55 e-/adu	1.995
VIMOS_IMG_AFC043_0007_B.4.fits	VIMOS.2015-02-12T08:14:27.435	Free	R	Cal_mos_flux-4mod6.adp	0.54 e-/adu	1.994
VIMOS_IMG_AFC043_0007_A.3.fits	VIMOS.2015-02-12T08:14:27.432	Free	R	Cal_mos_flux-3mod6.adp	0.56 e-/adu	1.995

Template VIMOS_mos_acq_Standard

Data Product ACQUISITION/SLIT,OBJECT/IMAGE

CCD 225kHz,1port,LG/1x1/2048x2440

Original Filename	Archive Filename	Grism	Filter	INS.ADF.ID	DET.OUT1.CONAD	EXPTIME
VIMOS_MOS_SLIT043_0005_A.3.fits	VIMOS.2015-02-12T08:14:49.505	Free	R	Cal_mos_flux-3mod6.adp	1.81 e-/adu	0.999
VIMOS_MOS_SLIT043_0005_A.2.fits	VIMOS.2015-02-12T08:14:49.504	Free	R	Cal_mos_flux-2mod6.adp	1.81 e-/adu	0.999
VIMOS_MOS_SLIT043_0005_B.1.fits	VIMOS.2015-02-12T08:14:49.514	Free	R	Cal_mos_flux-1mod6.adp	1.75 e-/adu	0.993
VIMOS_MOS_SLIT043_0005_B.4.fits	VIMOS.2015-02-12T08:14:49.515	Free	R	Cal_mos_flux-4mod6.adp	1.79 e-/adu	0.993
VIMOS_MOS_SLIT043_0006_A.3.fits	VIMOS.2015-02-12T08:16:34.739	Free	R	Cal_mos_flux-3mod6.adp	1.81 e-/adu	0.997
VIMOS_MOS_SLIT043_0006_B.4.fits	VIMOS.2015-02-12T08:16:34.738	Free	R	Cal_mos_flux-4mod6.adp	1.79 e-/adu	0.995
VIMOS_MOS_SLIT043_0006_B.1.fits	VIMOS.2015-02-12T08:16:34.737	Free	R	Cal_mos_flux-1mod6.adp	1.75 e-/adu	0.995
VIMOS_MOS_SLIT043_0006_A.2.fits	VIMOS.2015-02-12T08:16:34.740	Free	R	Cal_mos_flux-2mod6.adp	1.81 e-/adu	0.997

Template VIMOS_mos_cal_Specphot

Data Product CALIB/STD/MOS
CCD 225kHz, 1port, HG/1x1/2048x4096
Airmass 1.351
DIMM 1.05

Lamps

Original Filename	Archive Filename	Grism	Filter	INS.ADF.ID	DET.OUT1.CONAD	EXPTIME
VIMOS_MOS_STD043_0001_B.4.fits	VIMOS.2015-02-12T08:21:38.551	MR	GG475	Cal_mos_flux-4mod6.adp	0.57 e-/adu	17.993
VIMOS_MOS_STD043_0001_B.1.fits	VIMOS.2015-02-12T08:21:38.552	MR	GG475	Cal_mos_flux-1mod6.adp	0.55 e-/adu	17.993
VIMOS_MOS_STD043_0001_A.3.fits	VIMOS.2015-02-12T08:21:38.555	MR	GG475	Cal_mos_flux-3mod6.adp	0.56 e-/adu	17.995
VIMOS_MOS_STD043_0001_A.2.fits	VIMOS.2015-02-12T08:21:38.554	MR	GG475	Cal_mos_flux-2mod6.adp	0.6 e-/adu	17.995
VIMOS_MOS_STD043_0002_B.1.fits	VIMOS.2015-02-12T08:22:54.110	MR	GG475	Cal_mos_flux-1mod6.adp	0.55 e-/adu	17.992
VIMOS_MOS_STD043_0002_B.4.fits	VIMOS.2015-02-12T08:22:54.111	MR	GG475	Cal_mos_flux-4mod6.adp	0.57 e-/adu	17.992
VIMOS_MOS_STD043_0002_A.3.fits	VIMOS.2015-02-12T08:22:54.112	MR	GG475	Cal_mos_flux-3mod6.adp	0.56 e-/adu	17.996
VIMOS_MOS_STD043_0002_A.2.fits	VIMOS.2015-02-12T08:22:54.113	MR	GG475	Cal_mos_flux-2mod6.adp	0.6 e-/adu	17.996
VIMOS_MOS_STD043_0003_B.4.fits	VIMOS.2015-02-12T08:24:11.869	MR	GG475	Cal_mos_flux-4mod6.adp	0.57 e-/adu	17.994
VIMOS_MOS_STD043_0003_B.1.fits	VIMOS.2015-02-12T08:24:11.870	MR	GG475	Cal_mos_flux-1mod6.adp	0.55 e-/adu	17.994
VIMOS_MOS_STD043_0003_A.3.fits	VIMOS.2015-02-12T08:24:11.872	MR	GG475	Cal_mos_flux-3mod6.adp	0.56 e-/adu	17.998
VIMOS_MOS_STD043_0003_A.2.fits	VIMOS.2015-02-12T08:24:11.873	MR	GG475	Cal_mos_flux-2mod6.adp	0.6 e-/adu	17.998
VIMOS_MOS_STD043_0004_A.2.fits	VIMOS.2015-02-12T08:25:27.162	MR	GG475	Cal_mos_flux-2mod6.adp	0.6 e-/adu	17.995
VIMOS_MOS_STD043_0004_A.3.fits	VIMOS.2015-02-12T08:25:27.161	MR	GG475	Cal_mos_flux-3mod6.adp	0.56 e-/adu	17.995
VIMOS_MOS_STD043_0004_B.4.fits	VIMOS.2015-02-12T08:25:27.167	MR	GG475	Cal_mos_flux-4mod6.adp	0.57 e-/adu	17.994
VIMOS_MOS_STD043_0004_B.1.fits	VIMOS.2015-02-12T08:25:27.168	MR	GG475	Cal_mos_flux-1mod6.adp	0.55 e-/adu	17.994

OB 1117744 | 08:29:32 > 08:42:35 | 00:13:03 | Mode: Service | Loss: Execution | Status X > M

Grade C

Instrument VIMOS
Name PRE_J1410-p1
Target PRE_J1410-p1
PI Nicolas Tejos
Run 094.A-0575(A)
Container -
Public Comments Image quality within constraints. This pre-img required a std and I forgot to take it at the end of the night -- JCM.
 12 Feb 09:38

Files produced and additional information

OBS.ID 1117744
OBS.START 2015-02-12T08:29:32
Template VIMOS_img_acq_Preset
Data Product CALIB/LAMP,AFC/IMAGE
CCD 225kHz, 1port, HG,AFC/1x1/2048x400
Lamps Afc

Original Filename	Archive Filename	Filter	DET.OUT1.CONAD	EXPTIME
VIMOS_IMG_AFC043_0008_A.2.fits	VIMOS.2015-02-12T08:35:39.984	R	0.55 e-/adu	1.998
VIMOS_IMG_AFC043_0008_A.3.fits	VIMOS.2015-02-12T08:35:39.985	R	0.56 e-/adu	1.998
VIMOS_IMG_AFC043_0008_B.1.fits	VIMOS.2015-02-12T08:35:39.989	R	0.53 e-/adu	1.996
VIMOS_IMG_AFC043_0008_B.4.fits	VIMOS.2015-02-12T08:35:39.988	R	0.54 e-/adu	1.996
VIMOS_IMG_AFC043_0009_A.3.fits	VIMOS.2015-02-12T08:36:08.388	R	0.56 e-/adu	1.997
VIMOS_IMG_AFC043_0009_A.2.fits	VIMOS.2015-02-12T08:36:08.387	R	0.55 e-/adu	1.997
VIMOS_IMG_AFC043_0009_B.1.fits	VIMOS.2015-02-12T08:36:08.391	R	0.53 e-/adu	1.994
VIMOS_IMG_AFC043_0009_B.4.fits	VIMOS.2015-02-12T08:36:08.392	R	0.54 e-/adu	1.994
VIMOS_IMG_AFC043_0010_A.2.fits	VIMOS.2015-02-12T08:36:36.391	R	0.55 e-/adu	1.997
VIMOS_IMG_AFC043_0010_A.3.fits	VIMOS.2015-02-12T08:36:36.392	R	0.56 e-/adu	1.997
VIMOS_IMG_AFC043_0010_B.1.fits	VIMOS.2015-02-12T08:36:36.395	R	0.53 e-/adu	1.994
VIMOS_IMG_AFC043_0010_B.4.fits	VIMOS.2015-02-12T08:36:36.394	R	0.54 e-/adu	1.994

Template VIMOS_img_obs_Offset
Data Product SCIENCE/OBJECT/IMAGE,PRE
CCD 225kHz, 1port, LG/1x1/2048x2440
Airmass 1.527
DIMM 1.19

Original Filename	Archive Filename	Filter	DET.OUT1.CONAD	EXPTIME
VIMOS_IMG_OBS043_0001_A.3.fits	VIMOS.2015-02-12T08:37:07.765	R	1.81 e-/adu	120.0
VIMOS_IMG_OBS043_0001_A.2.fits	VIMOS.2015-02-12T08:37:07.766	R	1.81 e-/adu	120.0
VIMOS_IMG_OBS043_0001_B.1.fits	VIMOS.2015-02-12T08:37:07.768	R	1.75 e-/adu	119.994
VIMOS_IMG_OBS043_0001_B.4.fits	VIMOS.2015-02-12T08:37:07.769	R	1.79 e-/adu	119.994
VIMOS_IMG_OBS043_0002_A.3.fits	VIMOS.2015-02-12T08:39:48.155	R	1.81 e-/adu	119.999
VIMOS_IMG_OBS043_0002_A.2.fits	VIMOS.2015-02-12T08:39:48.154	R	1.81 e-/adu	119.999

VIMOS_IMG_OBS043_0002_B.4.fits VIMOS.2015-02-12T08:39:48.156 R 1.79 e-/adu 119.994
VIMOS_IMG_OBS043_0002_B.1.fits VIMOS.2015-02-12T08:39:48.157 R 1.75 e-/adu 119.994

OB 1117747 | 08:45:01 > 08:53:57 | 00:08:56 | Mode: Service | Loss: Execution | Status X > M

Grade C

Instrument VIMOS
Name PRE_J1410-p2
Target PRE_J1410-p2
PI Nicolas Tejos
Run 094.A-0575(A)
Container -
Public Comments Image quality within constraints. This pre-img required a std and I forgot to take it at the end of the night -- JCM.
12 Feb 09:41

Files produced and additional information

OBS.ID 1117747
OBS.START 2015-02-12T08:45:01
Template VIMOS_img_acq_Preset
Data Product CALIB/LAMP,AFC/IMAGE
CCD 225kHz,1port,HG,AFC/1x1/2048x400
Lamps Afc

Original Filename	Archive Filename	Filter	DET.OUT1.CONAD	EXPTIME
VIMOS_IMG_AFC043_0011_A.2.fits	VIMOS.2015-02-12T08:46:17.503	R	0.55 e-/adu	2.0
VIMOS_IMG_AFC043_0011_A.3.fits	VIMOS.2015-02-12T08:46:17.504	R	0.56 e-/adu	2.0
VIMOS_IMG_AFC043_0011_B.1.fits	VIMOS.2015-02-12T08:46:17.501	R	0.53 e-/adu	1.994
VIMOS_IMG_AFC043_0011_B.4.fits	VIMOS.2015-02-12T08:46:17.502	R	0.54 e-/adu	1.994
VIMOS_IMG_AFC043_0012_A.3.fits	VIMOS.2015-02-12T08:46:46.376	R	0.56 e-/adu	1.999
VIMOS_IMG_AFC043_0012_A.2.fits	VIMOS.2015-02-12T08:46:46.375	R	0.55 e-/adu	1.999
VIMOS_IMG_AFC043_0012_B.1.fits	VIMOS.2015-02-12T08:46:46.385	R	0.53 e-/adu	1.994
VIMOS_IMG_AFC043_0012_B.4.fits	VIMOS.2015-02-12T08:46:46.384	R	0.54 e-/adu	1.994
VIMOS_IMG_AFC043_0013_A.2.fits	VIMOS.2015-02-12T08:47:14.380	R	0.55 e-/adu	1.999
VIMOS_IMG_AFC043_0013_B.1.fits	VIMOS.2015-02-12T08:47:14.379	R	0.53 e-/adu	1.994
VIMOS_IMG_AFC043_0013_B.4.fits	VIMOS.2015-02-12T08:47:14.378	R	0.54 e-/adu	1.994
VIMOS_IMG_AFC043_0013_A.3.fits	VIMOS.2015-02-12T08:47:14.381	R	0.56 e-/adu	1.999

Template VIMOS_img_obs_Offset
Data Product SCIENCE/OBJECT/IMAGE,PRE
CCD 225kHz,1port,LG/1x1/2048x2440
Airmass 1.508
DIMM 1.16

Original Filename	Archive Filename	Filter	DET.OUT1.CONAD	EXPTIME
VIMOS_IMG_OBS043_0003_B.4.fits	VIMOS.2015-02-12T08:48:29.496	R	1.79 e-/adu	119.994
VIMOS_IMG_OBS043_0003_B.1.fits	VIMOS.2015-02-12T08:48:29.497	R	1.75 e-/adu	119.994
VIMOS_IMG_OBS043_0003_A.2.fits	VIMOS.2015-02-12T08:48:29.498	R	1.81 e-/adu	119.999
VIMOS_IMG_OBS043_0003_A.3.fits	VIMOS.2015-02-12T08:48:29.499	R	1.81 e-/adu	119.999
VIMOS_IMG_OBS043_0004_B.1.fits	VIMOS.2015-02-12T08:51:10.156	R	1.75 e-/adu	119.994
VIMOS_IMG_OBS043_0004_B.4.fits	VIMOS.2015-02-12T08:51:10.155	R	1.79 e-/adu	119.994
VIMOS_IMG_OBS043_0004_A.3.fits	VIMOS.2015-02-12T08:51:10.158	R	1.81 e-/adu	119.999
VIMOS_IMG_OBS043_0004_A.2.fits	VIMOS.2015-02-12T08:51:10.157	R	1.81 e-/adu	119.999

OB 1117750 | 08:57:15 > 09:05:44 | 00:08:29 | Mode: Service | Loss: Execution | Status X > M

Grade C

Instrument VIMOS
Name PRE_J1410-p3
Target PRE_J1410-p3
PI Nicolas Tejos
Run 094.A-0575(A)
Container -
Public Comments Image quality within constraints. This pre-img required a std and I forgot to take it at the end of the night -- JCM.
12 Feb 09:41

Files produced and additional information

OBS.ID 1117750
OBS.START 2015-02-12T08:57:15
Template VIMOS_img_acq_Preset
Data Product CALIB/LAMP,AFC/IMAGE
CCD 225kHz,1port,HG,AFC/1x1/2048x400

Lamps Afc

Original Filename	Archive Filename	Filter	DET.OUT1.CONAD	EXPTIME
VIMOS_IMG_AFC043_0014_A.2.fits	VIMOS.2015-02-12T08:58:30.998	R	0.55 e-/adu	1.997
VIMOS_IMG_AFC043_0014_A.3.fits	VIMOS.2015-02-12T08:58:30.999	R	0.56 e-/adu	1.997
VIMOS_IMG_AFC043_0014_B.4.fits	VIMOS.2015-02-12T08:58:31.006	R	0.54 e-/adu	1.995
VIMOS_IMG_AFC043_0014_B.1.fits	VIMOS.2015-02-12T08:58:31.005	R	0.53 e-/adu	1.995
VIMOS_IMG_AFC043_0015_B.1.fits	VIMOS.2015-02-12T08:59:16.341	R	0.53 e-/adu	1.994
VIMOS_IMG_AFC043_0015_B.4.fits	VIMOS.2015-02-12T08:59:16.340	R	0.54 e-/adu	1.994
VIMOS_IMG_AFC043_0015_A.2.fits	VIMOS.2015-02-12T08:59:16.346	R	0.55 e-/adu	1.996
VIMOS_IMG_AFC043_0015_A.3.fits	VIMOS.2015-02-12T08:59:16.345	R	0.56 e-/adu	1.996
VIMOS_IMG_AFC043_0016_B.4.fits	VIMOS.2015-02-12T08:59:45.383	R	0.54 e-/adu	1.994
VIMOS_IMG_AFC043_0016_B.1.fits	VIMOS.2015-02-12T08:59:45.384	R	0.53 e-/adu	1.994
VIMOS_IMG_AFC043_0016_A.3.fits	VIMOS.2015-02-12T08:59:45.389	R	0.56 e-/adu	1.996
VIMOS_IMG_AFC043_0016_A.2.fits	VIMOS.2015-02-12T08:59:45.388	R	0.55 e-/adu	1.996

Template VIMOS_img_obs_Offset
Data Product SCIENCE/OBJECT/IMAGE,PRE
CCD 225kHz, 1port, LG/1x1/2048x2440
Airmass 1.492
DIMM 1.04

Original Filename	Archive Filename	Filter	DET.OUT1.CONAD	EXPTIME
VIMOS_IMG_OBS043_0005_B.1.fits	VIMOS.2015-02-12T09:00:16.518	R	1.75 e-/adu	119.994
VIMOS_IMG_OBS043_0005_B.4.fits	VIMOS.2015-02-12T09:00:16.517	R	1.79 e-/adu	119.994
VIMOS_IMG_OBS043_0005_A.3.fits	VIMOS.2015-02-12T09:00:16.522	R	1.81 e-/adu	119.996
VIMOS_IMG_OBS043_0005_A.2.fits	VIMOS.2015-02-12T09:00:16.521	R	1.81 e-/adu	119.996
VIMOS_IMG_OBS043_0006_A.2.fits	VIMOS.2015-02-12T09:02:57.162	R	1.81 e-/adu	119.995
VIMOS_IMG_OBS043_0006_A.3.fits	VIMOS.2015-02-12T09:02:57.161	R	1.81 e-/adu	119.995
VIMOS_IMG_OBS043_0006_B.4.fits	VIMOS.2015-02-12T09:02:57.166	R	1.79 e-/adu	119.994
VIMOS_IMG_OBS043_0006_B.1.fits	VIMOS.2015-02-12T09:02:57.165	R	1.75 e-/adu	119.994

OB Grades

A : Fully within constraints - OB completed
B : Mostly within constraints, some constraint is ~10% violated - OB completed
C : Out of constraints - OB must be repeated
D : Out of constraints - OB considered completed
X : Uncertain / Not Applicable
_ : no grade assigned

Tickets

(c) : created during the given night report
(m) : modified during the given night report