

UT3 Visitor Telescope Report 12 / 13-Feb-2015



Report generated Feb 16 2015 09:38 UTC

- [Weather »](#)
- [Night Timeline »](#)
- [Time Accounting »](#)
- [Comments »](#)
- [Summary of Data »](#)
- [Daytime Calibrations »](#)
- [Nighttime Observations »](#)

Night Statistics

Report Interval 12 Feb 16:00 - 13 Feb 16:00 UT
Night Time 13 Feb 00:45 - 13 Feb 09:06 UT
Night Length 08:21
Evening Twilight 12 Feb 23:32 - 13 Feb 00:45 UT
Morning Twilight 13 Feb 09:06 - 13 Feb 10:19 UT

Common Staff

Day Shift Coordinators Cedric Ledoux
Giovanni Carraro
Day Time Astronomers Stephane Brillant
Christophe Martayan
Xavier Haubois
Night Shift Coordinators Juan Carlos Munoz-Mateos

Operation Specialists

Weather Officers Marcelo Lopez
Julio Navarrete

Telescope Staff

Night Astronomers Juan Carlos Munoz-Mateos
Telescope Operators Claudia Reyes
Visiting Astronomers

Weather

General Weather Conditions

Seeing 0.6 - 2.2 arcsec
Humidity 40 - 58%
Wind 4 - 10 m/s
Temperature 14 - 16 C

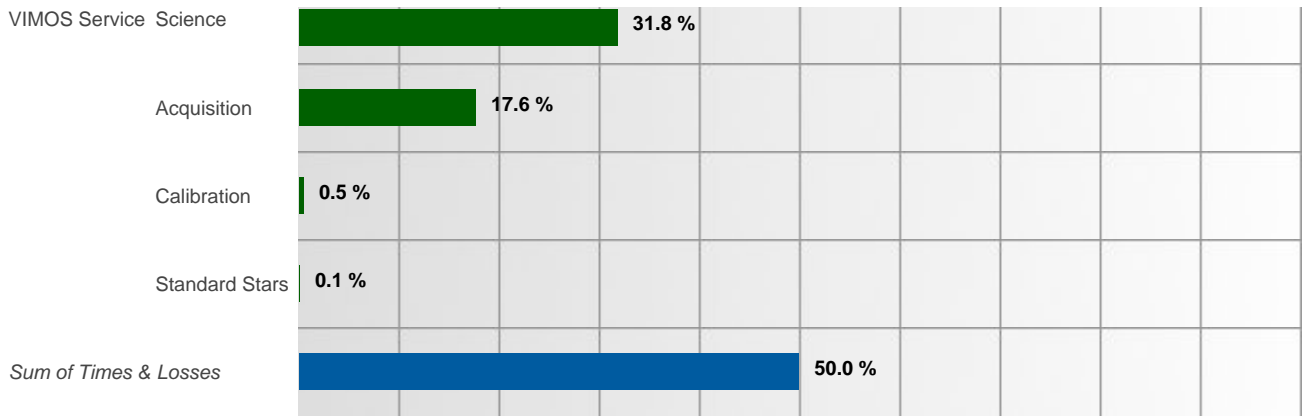
Overall Comment

Weather Observations

Time	Conditions	Comment
23:36	CL	- <i>Paranal Observatory</i>
00:25	PH	According to OMEGACAM ZPs - <i>Paranal Observatory</i>
01:01	PH	According to FORS ZPs - <i>Paranal Observatory</i>
04:25	PH	According to FORS ZPs - <i>Paranal Observatory</i>
05:08	PH	According to OMEGACAM ZPs - <i>Paranal Observatory</i>

Legend: PH-Photometric, CL-Clear, TN-Thin cirrus, TK-Thick cirrus, CY-Cloudy, WI-Windy, HU-Humid, RN-Rain, SN-Snow, EQ-Earthquake, OT-Other

Weather Chart



Percentages are relative to the night duration of 08:21. Instrument times (green bars) for Science, Calibration and Standard Stars are derived from produced FITS files using instrument-specific algorithms. Losses (red bars) are derived from Downtime Slots, Ob Slots and Partial Losses within OB Slots that were classified with some loss type.

Comments

Setup Activities

Time Comment

Public Comments

Time Comment

Summary of Data

Daytime Calibrations

OB ID	from > to	Duration	Run ID	Instrument	OB Name	Grade	Mode
200155281	21:46:10 > 21:57:24	00:11:14	60.A-9050(A)	VIMOS	VIMOS Focus Check	X	Service
200313600	09:32:52 > 11:52:14	02:19:22	60.A-9249(A)	SPHERE	No name	X	Service
200127566	09:32:59 > 12:03:28	02:30:29	60.A-9050(A)	VIMOS	Calibrations	X	Service

Nighttime Observations

OB ID	from > to	Duration	Run ID	Instrument	OB Name	Loss Type	Grade	Mode
1158045	23:58:42 > 01:09:13	01:10:31	60.A-9370(A)	SPHERE	GGTau_IRDIS	No Loss	A	Commissioning
1164954	01:11:02 > 01:19:13	00:08:11	60.A-9379(A)	SPHERE	MOV_Hygiea	No Loss	_	Commissioning
1164954	01:21:18 > 01:26:43	00:05:25	60.A-9379(A)	SPHERE	MOV_Hygiea	No Loss	A	Commissioning
1164957	01:27:20 > 01:37:16	00:09:56	60.A-9379(A)	SPHERE	PSF_Hygiea	No Loss	X	Commissioning
1164957	01:38:03 > 01:41:16	00:03:13	60.A-9379(A)	SPHERE	PSF_Hygiea	No Loss	A	Commissioning
1164933	01:41:59 > 01:53:37	00:11:38	60.A-9379(A)	SPHERE	MOV_Juno	No Loss	X	Commissioning
1164933	01:55:38 > 02:01:11	00:05:33	60.A-9379(A)	SPHERE	MOV_Juno	No Loss	A	Commissioning
1164936	02:01:25 > 02:08:16	00:06:51	60.A-9379(A)	SPHERE	PSF_Juno	No Loss	X	Commissioning
1164936	02:08:30 > 02:10:18	00:01:48	60.A-9379(A)	SPHERE	PSF_Juno	No Loss	X	Commissioning
1164936	02:11:21 > 02:12:43	00:01:22	60.A-9379(A)	SPHERE	PSF_Juno	No Loss	X	Commissioning
1164936	02:13:00 > 02:16:13	00:03:13	60.A-9379(A)	SPHERE	PSF_Juno	No Loss	A	Commissioning
1178551	02:16:50 > 02:32:00	00:15:10	60.A-9372(A)	SPHERE	MOV_IFS_GANYMEDE_2	No Loss	X	Commissioning
1178544	02:33:18 > 02:50:18	00:17:00	60.A-9372(A)	SPHERE	MOV_IFS_CALLISTO	No Loss	X	Commissioning
1158224	02:55:20 > 03:02:18	00:06:58	60.A-9385(A)	SPHERE	HD 90520	No Loss	_	Commissioning
1158224	03:02:43 > 03:13:09	00:10:26	60.A-9385(A)	SPHERE	HD 90520	No Loss	X	Commissioning
1158224	03:14:08 > 04:03:54	00:49:46	60.A-9385(A)	SPHERE	HD 90520	No Loss	A	Commissioning
1103463	04:11:59 > 05:32:46	01:20:47	093.A-0910(B)	VIMOS	MOS_P4-mask2	No Loss	A	Service
1103475	05:32:56 > 06:44:28	01:11:32	093.A-0910(B)	VIMOS	MOS_P4-mask2_3	No Loss	A	Service
968057	06:44:34 > 08:16:54	01:32:20	090.B-0498(B)	VIMOS	MOS_MR_VCC1110_N	No Loss	C	Service
1117744	08:17:04 > 08:31:45	00:14:41	094.A-0575(A)	VIMOS	PRE_J1410-p1	No Loss	A	Service
1117747	08:31:59 > 08:39:43	00:07:44	094.A-0575(A)	VIMOS	PRE_J1410-p2	No Loss	A	Service
1117750	08:40:15 > 08:57:24	00:17:09	094.A-0575(A)	VIMOS	PRE_J1410-p3	No Loss	A	Service
200265516	08:57:46 > 09:10:36	00:12:50	60.A-9050(A)	VIMOS	IMG Phot 4Q PG1323..	No Loss	X	Service

Nighttime Losses

Loss from > to Duration Run ID Instrument OB Name Loss Type Grade Mode

Daytime Calibrations

OB 200155281 | 21:46:10 > 21:57:24 | 00:11:14 | Mode: Service | Loss: No Loss | Status X > M

Grade X

Instrument VIMOS
 Name VIMOS Focus Check
 Target

PI VIMOS team
Run 60.A-9050(A)
Container -
Public Comments

Files produced and additional information

OBS.ID 200155281
OBS.START 2015-02-12T21:46:10
Template VIMOS_img_tec_FocusCheck
Data Product CALIB/LAMP,AFC/IMAGE
CCD 225kHz,1port,HG,AFC/1x1/2048x400
Lamps Afc

Original Filename	Archive Filename	Grism	Filter	INS.ADF.ID	DET.OUT1.CONAD	EXPTIME
VIMOS_IMG_AFC043_0001_B.1.fits	VIMOS.2015-02-12T21:50:41.733	Free	R		0.53 e-/adu	1.997
VIMOS_IMG_AFC043_0001_B.4.fits	VIMOS.2015-02-12T21:50:41.732	Free	R		0.54 e-/adu	1.997
VIMOS_IMG_AFC043_0001_A.3.fits	VIMOS.2015-02-12T21:50:41.735	Free	R		0.56 e-/adu	2.002
VIMOS_IMG_AFC043_0001_A.2.fits	VIMOS.2015-02-12T21:50:41.734	Free	R		0.55 e-/adu	2.002
VIMOS_IMG_AFC043_0002_B.1.fits	VIMOS.2015-02-12T21:51:11.136	Free	R		0.53 e-/adu	1.995
VIMOS_IMG_AFC043_0002_B.4.fits	VIMOS.2015-02-12T21:51:11.137	Free	R		0.54 e-/adu	1.995
VIMOS_IMG_AFC043_0002_A.2.fits	VIMOS.2015-02-12T21:51:11.139	Free	R		0.55 e-/adu	2.0
VIMOS_IMG_AFC043_0002_A.3.fits	VIMOS.2015-02-12T21:51:11.138	Free	R		0.56 e-/adu	2.0
VIMOS_IMG_AFC043_0003_B.4.fits	VIMOS.2015-02-12T21:51:39.999	Free	R		0.54 e-/adu	1.996
VIMOS_IMG_AFC043_0003_B.1.fits	VIMOS.2015-02-12T21:51:39.998	Free	R		0.53 e-/adu	1.996
VIMOS_IMG_AFC043_0003_A.2.fits	VIMOS.2015-02-12T21:51:40.012	Free	R		0.55 e-/adu	2.001
VIMOS_IMG_AFC043_0003_A.3.fits	VIMOS.2015-02-12T21:51:40.011	Free	R		0.56 e-/adu	2.001

Template VIMOS_img_tec_MaskToCcd
Data Product CALIB/LAMP,OTHER/IMAGE
CCD 225kHz,1port,LG/1x1/2048x2440
Lamps QTH10

Original Filename	Archive Filename	Grism	Filter	INS.ADF.ID	DET.OUT1.CONAD	EXPTIME
VIMOS_IMG_OTHER043_0001_B.1.fits	VIMOS.2015-02-12T21:52:04.331	Free	R	cal_05s_pinhole-1mod2.adp	1.75 e-/adu	0.996
VIMOS_IMG_OTHER043_0001_B.4.fits	VIMOS.2015-02-12T21:52:04.332	Free	R	cal_05s_pinhole-4mod2.adp	1.79 e-/adu	0.996
VIMOS_IMG_OTHER043_0001_A.2.fits	VIMOS.2015-02-12T21:52:04.335	Free	R	cal_05s_pinhole-2mod2.adp	1.81 e-/adu	1.002
VIMOS_IMG_OTHER043_0001_A.3.fits	VIMOS.2015-02-12T21:52:04.336	Free	R	cal_05s_pinhole-3mod2.adp	1.81 e-/adu	1.002

OB 200313600 | 09:32:52 > 11:52:14 | 02:19:22 | Mode: Service | Loss: No Loss | Status X > M Grade X

Instrument SPHERE
Name No name
Target No name
PI SPHERE Team SPHERE team
Run 60.A-9249(A)
Container -
Public Comments

Files produced and additional information

OBS.ID 200313600
OBS.START 2015-02-13T09:32:52
Template SPHERE_irdifs_cal_dark

Original Filename	Archive Filename	TPL.EXPNO/NEXP	DPR.TYPE	INS.FILT1.NAME	EXPTIME
SPHERE_IRDIFS_IFS_CAL_DARK044_0001.fits	SPHER.2015-02-13T09:33:15.107	1/6		DARK	2.0
SPHERE_IRDIFS_IRDIS_CAL_DARK044_0001.fits	SPHER.2015-02-13T09:33:16.459	2/6		DARK	2.0
SPHERE_IRDIFS_IRDIS_CAL_DARK044_0002.fits	SPHER.2015-02-13T09:35:18.798	3/6		DARK	8.0
SPHERE_IRDIFS_IFS_CAL_DARK044_0002.fits	SPHER.2015-02-13T09:35:54.822	4/6		DARK	8.0
SPHERE_IRDIFS_IRDIS_CAL_DARK044_0003.fits	SPHER.2015-02-13T09:39:06.728	5/6		DARK	30.0
SPHERE_IRDIFS_IFS_CAL_DARK044_0003.fits	SPHER.2015-02-13T09:40:07.136	6/6		DARK	30.0
SPHERE_IRDIFS_IFS_CAL_DARK044_0004.fits	SPHER.2015-02-13T10:48:38.604	1/2		DARK	16.0
SPHERE_IRDIFS_IRDIS_CAL_DARK044_0004.fits	SPHER.2015-02-13T10:48:39.555	2/2		DARK	16.0
SPHERE_IRDIFS_IFS_CAL_DARK044_0005.fits	SPHER.2015-02-13T10:51:45.633	1/2		DARK	32.0
SPHERE_IRDIFS_IRDIS_CAL_DARK044_0005.fits	SPHER.2015-02-13T10:51:46.562	2/2		DARK	32.0

Template SPHERE_irdifs_cal_background

Original Filename	Archive Filename	TPL.EXPNO/NEXP	DPR.TYPE	INS.FILT1.NAME	EXPTIME
SPHERE_IRDIFS_IFS_CAL_BCKG044_0001.fits	SPHER.2015-02-13T09:48:23.158	1/6		DARK,BACKGROUND	2.0
SPHERE_IRDIFS_IRDIS_CAL_BCKG044_0001.fits	SPHER.2015-02-13T09:48:24.072	2/6		DARK,BACKGROUND	2.0
SPHERE_IRDIFS_IRDIS_CAL_BCKG044_0002.fits	SPHER.2015-02-13T09:50:26.384	3/6		DARK,BACKGROUND	8.0
SPHERE_IRDIFS_IFS_CAL_BCKG044_0002.fits	SPHER.2015-02-13T09:51:02.877	4/6		DARK,BACKGROUND	8.0

SPHERE_IRDIFS_IRDIS_CAL_BCKG044_0003.fits	SPHER.2015-02-13T09:54:14.367	5/6		DARK,BACKGROUND	30.0
SPHERE_IRDIFS_IFS_CAL_BCKG044_0003.fits	SPHER.2015-02-13T09:55:16.233	6/6		DARK,BACKGROUND	30.0
SPHERE_IRDIFS_IFS_CAL_BCKG044_0004.fits	SPHER.2015-02-13T10:03:32.053	1/6		DARK,BACKGROUND	2.0
SPHERE_IRDIFS_IRDIS_CAL_BCKG044_0004.fits	SPHER.2015-02-13T10:03:33.032	2/6		DARK,BACKGROUND	2.0
SPHERE_IRDIFS_IRDIS_CAL_BCKG044_0005.fits	SPHER.2015-02-13T10:05:35.421	3/6		DARK,BACKGROUND	8.0
SPHERE_IRDIFS_IFS_CAL_BCKG044_0005.fits	SPHER.2015-02-13T10:06:12.145	4/6		DARK,BACKGROUND	8.0
SPHERE_IRDIFS_IRDIS_CAL_BCKG044_0006.fits	SPHER.2015-02-13T10:09:23.502	5/6		DARK,BACKGROUND	30.0
SPHERE_IRDIFS_IFS_CAL_BCKG044_0006.fits	SPHER.2015-02-13T10:10:25.111	6/6		DARK,BACKGROUND	30.0
SPHERE_IRDIFS_IFS_CAL_BCKG044_0007.fits	SPHER.2015-02-13T10:59:36.965	1/2		DARK,BACKGROUND	16.0
SPHERE_IRDIFS_IRDIS_CAL_BCKG044_0007.fits	SPHER.2015-02-13T10:59:37.897	2/2		DARK,BACKGROUND	16.0
SPHERE_IRDIFS_IFS_CAL_BCKG044_0008.fits	SPHER.2015-02-13T11:05:42.656	1/2		DARK,BACKGROUND	32.0
SPHERE_IRDIFS_IRDIS_CAL_BCKG044_0008.fits	SPHER.2015-02-13T11:05:43.600	2/2		DARK,BACKGROUND	32.0

Template SPHERE_zimpol_i_cal_dark

Original Filename	Archive Filename	TPL.EXPNO/NEXP	DPR.TYPE	INS.FILT1.NAME	EXPTIME
SPHERE_ZIMPOL_CAL_DARK044_0001.fits	SPHER.2015-02-13T10:19:14.602	1/2	DARK		100.0
SPHERE_ZIMPOL_CAL_DARK044_0002.fits	SPHER.2015-02-13T10:20:59.239	2/2	DARK		100.0

Template SPHERE_zimpol_p_cal_dark

Original Filename	Archive Filename	TPL.EXPNO/NEXP	DPR.TYPE	INS.FILT1.NAME	EXPTIME
SPHERE_ZIMPOL_CAL_DARK044_0003.fits	SPHER.2015-02-13T10:23:25.537	1/1	DARK		100.0
SPHERE_ZIMPOL_CAL_DARK044_0004.fits	SPHER.2015-02-13T10:27:43.553	1/1	DARK		100.0

Template SPHERE_zimpol_i_cal_bias

Original Filename	Archive Filename	TPL.EXPNO/NEXP	DPR.TYPE	INS.FILT1.NAME	EXPTIME
SPHERE_ZIMPOL_CAL_BIAS044_0001.fits	SPHER.2015-02-13T10:31:52.125	1/1	BIAS		0.0

Template SPHERE_zimpol_p_cal_bias

Original Filename	Archive Filename	TPL.EXPNO/NEXP	DPR.TYPE	INS.FILT1.NAME	EXPTIME
SPHERE_ZIMPOL_CAL_BIAS044_0002.fits	SPHER.2015-02-13T10:33:24.838	1/1	BIAS		0.0
SPHERE_ZIMPOL_CAL_BIAS044_0003.fits	SPHER.2015-02-13T10:40:45.925	1/1	BIAS		0.0

Template SPHERE_irdis_cal_dark

Original Filename	Archive Filename	TPL.EXPNO/NEXP	DPR.TYPE	INS.FILT1.NAME	EXPTIME
SPHERE_IRDIS_CAL_DARK044_0001.fits	SPHER.2015-02-13T10:43:23.308	1/1	DARK		2.0
SPHERE_IRDIS_CAL_DARK044_0002.fits	SPHER.2015-02-13T10:44:33.641	1/1	DARK		4.0
SPHERE_IRDIS_CAL_DARK044_0003.fits	SPHER.2015-02-13T10:46:23.848	1/1	DARK		2.0
SPHERE_IRDIS_CAL_DARK044_0004.fits	SPHER.2015-02-13T10:47:34.375	1/1	DARK		1.0

Template SPHERE_irdis_cal_background

Original Filename	Archive Filename	TPL.EXPNO/NEXP	DPR.TYPE	INS.FILT1.NAME	EXPTIME
SPHERE_IRDIS_CAL_BCKG044_0001.fits	SPHER.2015-02-13T10:57:46.967	1/1	DARK,BACKGROUND		2.0
SPHERE_IRDIS_CAL_BCKG044_0002.fits	SPHER.2015-02-13T10:58:18.253	1/1	DARK,BACKGROUND		4.0
SPHERE_IRDIS_CAL_BCKG044_0003.fits	SPHER.2015-02-13T10:58:49.558	1/1	DARK,BACKGROUND		2.0
SPHERE_IRDIS_CAL_BCKG044_0004.fits	SPHER.2015-02-13T10:59:11.831	1/1	DARK,BACKGROUND		1.0

Template SPHERE_irdis_cal_flat

Original Filename	Archive Filename	TPL.EXPNO/NEXP	DPR.TYPE	INS.FILT1.NAME	EXPTIME
SPHERE_IRDIS_CAL_FLAT044_0001.fits	SPHER.2015-02-13T11:17:42.318	1/5	FLAT,LAMP		2.0
SPHERE_IRDIS_CAL_FLAT044_0002.fits	SPHER.2015-02-13T11:18:13.834	2/5	FLAT,LAMP		4.0
SPHERE_IRDIS_CAL_FLAT044_0003.fits	SPHER.2015-02-13T11:19:06.251	3/5	FLAT,LAMP		6.0
SPHERE_IRDIS_CAL_FLAT044_0004.fits	SPHER.2015-02-13T11:20:18.709	4/5	FLAT,LAMP		8.0
SPHERE_IRDIS_CAL_FLAT044_0005.fits	SPHER.2015-02-13T11:21:51.171	5/5	FLAT,LAMP		10.0
SPHERE_IRDIS_CAL_FLAT044_0006.fits	SPHER.2015-02-13T11:23:59.734	1/5	FLAT,LAMP		1.0
SPHERE_IRDIS_CAL_FLAT044_0007.fits	SPHER.2015-02-13T11:24:22.130	2/5	FLAT,LAMP		1.5
SPHERE_IRDIS_CAL_FLAT044_0008.fits	SPHER.2015-02-13T11:24:48.602	3/5	FLAT,LAMP		2.0
SPHERE_IRDIS_CAL_FLAT044_0009.fits	SPHER.2015-02-13T11:25:20.083	4/5	FLAT,LAMP		2.5
SPHERE_IRDIS_CAL_FLAT044_0010.fits	SPHER.2015-02-13T11:25:57.736	5/5	FLAT,LAMP		3.0

Template SPHERE_irdifs_cal_flat

Original Filename	Archive Filename	TPL.EXPNO/NEXP	DPR.TYPE	INS.FILT1.NAME	EXPTIME
SPHERE_IRDIFS_IFS_CAL_FLAT044_0001.fits	SPHER.2015-02-13T11:29:54.274	1/13	FLAT,LAMP		3.0
SPHERE_IRDIFS_IRDIS_CAL_FLAT044_0001.fits	SPHER.2015-02-13T11:30:05.555	2/13	FLAT,LAMP		2.0
SPHERE_IRDIFS_IFS_CAL_FLAT044_0002.fits	SPHER.2015-02-13T11:30:23.683	3/13	FLAT,LAMP		11.0
SPHERE_IRDIFS_IRDIS_CAL_FLAT044_0002.fits	SPHER.2015-02-13T11:30:38.658	4/13	FLAT,LAMP		4.0
SPHERE_IRDIFS_IRDIS_CAL_FLAT044_0003.fits	SPHER.2015-02-13T11:31:35.536	5/13	FLAT,LAMP		6.0
SPHERE_IRDIFS_IFS_CAL_FLAT044_0003.fits	SPHER.2015-02-13T11:34:39.213	6/13	FLAT,LAMP		3.0
SPHERE_IRDIFS_IRDIS_CAL_FLAT044_0004.fits	SPHER.2015-02-13T11:34:41.113	7/13	FLAT,LAMP		8.0
SPHERE_IRDIFS_IFS_CAL_FLAT044_0004.fits	SPHER.2015-02-13T11:35:07.797	8/13	FLAT,LAMP		11.0
SPHERE_IRDIFS_IRDIS_CAL_FLAT044_0005.fits	SPHER.2015-02-13T11:36:16.806	9/13	FLAT,LAMP		10.0
SPHERE_IRDIFS_IFS_CAL_FLAT044_0005.fits	SPHER.2015-02-13T11:39:20.441	10/13	FLAT,LAMP		5.0
SPHERE_IRDIFS_IFS_CAL_FLAT044_0006.fits	SPHER.2015-02-13T11:39:58.849	11/13	FLAT,LAMP		25.0

SPHERE_IRDIFS_IFS_CAL_FLAT044_0007.fits	SPHER.2015-02-13T11:45:18.602	12/13	FLAT,LAMP	2.0
SPHERE_IRDIFS_IFS_CAL_FLAT044_0008.fits	SPHER.2015-02-13T11:45:42.997	13/13	FLAT,LAMP	10.0

Template SPHERE_irdifs_cal_ifsflat

Original Filename	Archive Filename	TPL.EXPNO/NEXP	DPR.TYPE	INS.FILT1.NAME	EXPTIME
SPHERE_IRDIFS_IFS_CAL_IFSFLAT044_0001.fits	SPHER.2015-02-13T11:47:26.019	1/1	FLAT,LAMP		1.66

Template SPHERE_irdifs_cal_wave

Original Filename	Archive Filename	TPL.EXPNO/NEXP	DPR.TYPE	INS.FILT1.NAME	EXPTIME
SPHERE_IRDIFS_IFS_CAL_WAVE044_0001.fits	SPHER.2015-02-13T11:48:14.244	1/1	WAVE,LAMP		1.66

Template SPHERE_irdifs_cal_specpos

Original Filename	Archive Filename	TPL.EXPNO/NEXP	DPR.TYPE	INS.FILT1.NAME	EXPTIME
SPHERE_IRDIFS_IFS_CAL_IFSFLAT044_0002.fits	SPHER.2015-02-13T11:48:50.744	1/1	SPECPOS,LAMP		1.66

Template SPHERE_irdis_cal_distmap

Original Filename	Archive Filename	TPL.EXPNO/NEXP	DPR.TYPE	INS.FILT1.NAME	EXPTIME
SPHERE_IRDIS_CAL_DISTMAP044_0001.fits	SPHER.2015-02-13T11:49:32.912	1/1	LAMP,DISTORT		2.0
SPHERE_IRDIS_CAL_DISTMAP044_0002.fits	SPHER.2015-02-13T11:50:25.172	1/1	LAMP,DISTORT		1.0

Template SPHERE_irdifs_cal_distmap

Original Filename	Archive Filename	TPL.EXPNO/NEXP	DPR.TYPE	INS.FILT1.NAME	EXPTIME
SPHERE_IRDIFS_IFS_CAL_DISTMAP044_0001.fits	SPHER.2015-02-13T11:51:15.181	1/4	LAMP,DISTORT		8.0
SPHERE_IRDIFS_IRDIS_CAL_DISTMAP044_0001.fits	SPHER.2015-02-13T11:51:15.910	2/4	LAMP,DISTORT		2.0

OB 200127566 | 09:32:59 > 12:03:28 | 02:30:29 | Mode: Service | Loss: No Loss | Status X > M Grade X

Instrument VIMOS
Name Calibrations
Target
PI VIMOS team
Run 60.A-9050(A)
Container -

Public Comments

Files produced and additional information

OBS.ID 200127566
OBS.START 2015-02-13T09:32:59
Template VIMOS_img_cal_Dark
Data Product CALIB/BIAS/IMAGE
CCD 225kHz, 1port, LG/1x1/2048x2440

Lamps

Original Filename	Archive Filename	Filter	DET.OUT1.CONAD	EXPTIME
VIMOS_IMG_BIAS044_0001_B.4.fits	VIMOS.2015-02-13T09:33:08.197	V	1.79 e-/adu	0.0
VIMOS_IMG_BIAS044_0001_B.1.fits	VIMOS.2015-02-13T09:33:08.198	V	1.75 e-/adu	0.0
VIMOS_IMG_BIAS044_0001_A.2.fits	VIMOS.2015-02-13T09:33:08.202	V	1.81 e-/adu	0.0
VIMOS_IMG_BIAS044_0001_A.3.fits	VIMOS.2015-02-13T09:33:08.201	V	1.81 e-/adu	0.0
VIMOS_IMG_BIAS044_0002_B.1.fits	VIMOS.2015-02-13T09:33:45.762	V	1.75 e-/adu	0.0
VIMOS_IMG_BIAS044_0002_B.4.fits	VIMOS.2015-02-13T09:33:45.761	V	1.79 e-/adu	0.0
VIMOS_IMG_BIAS044_0002_A.2.fits	VIMOS.2015-02-13T09:33:45.766	V	1.81 e-/adu	0.0
VIMOS_IMG_BIAS044_0002_A.3.fits	VIMOS.2015-02-13T09:33:45.765	V	1.81 e-/adu	0.0
VIMOS_IMG_BIAS044_0003_B.1.fits	VIMOS.2015-02-13T09:34:22.777	V	1.75 e-/adu	0.0
VIMOS_IMG_BIAS044_0003_B.4.fits	VIMOS.2015-02-13T09:34:22.776	V	1.79 e-/adu	0.0
VIMOS_IMG_BIAS044_0003_A.3.fits	VIMOS.2015-02-13T09:34:22.780	V	1.81 e-/adu	0.0
VIMOS_IMG_BIAS044_0003_A.2.fits	VIMOS.2015-02-13T09:34:22.779	V	1.81 e-/adu	0.0
VIMOS_IMG_BIAS044_0004_B.4.fits	VIMOS.2015-02-13T09:34:59.829	V	1.79 e-/adu	0.0
VIMOS_IMG_BIAS044_0004_B.1.fits	VIMOS.2015-02-13T09:34:59.830	V	1.75 e-/adu	0.0
VIMOS_IMG_BIAS044_0004_A.2.fits	VIMOS.2015-02-13T09:34:59.834	V	1.81 e-/adu	0.0
VIMOS_IMG_BIAS044_0004_A.3.fits	VIMOS.2015-02-13T09:34:59.835	V	1.81 e-/adu	0.0
VIMOS_IMG_BIAS044_0005_A.2.fits	VIMOS.2015-02-13T09:35:36.758	V	1.81 e-/adu	0.0
VIMOS_IMG_BIAS044_0005_A.3.fits	VIMOS.2015-02-13T09:35:36.759	V	1.81 e-/adu	0.0
VIMOS_IMG_BIAS044_0005_B.4.fits	VIMOS.2015-02-13T09:35:36.765	V	1.79 e-/adu	0.0
VIMOS_IMG_BIAS044_0005_B.1.fits	VIMOS.2015-02-13T09:35:36.764	V	1.75 e-/adu	0.0

Template VIMOS_spec_cal_Dark

Data Product CALIB/BIAS/IMAGE
CCD 225kHz, 1port, HG/1x1/2048x4096

Lamps

Original Filename	Archive Filename	Grism	Filter	INS.ADF.ID	DET.OUT1.CONAD	EXPTIME
VIMOS_SPEC_BIAS044_0001_B.1.fits	VIMOS.2015-02-13T09:36:30.081	Free	V		0.55 e-/adu	0.0
VIMOS_SPEC_BIAS044_0001_B.4.fits	VIMOS.2015-02-13T09:36:30.080	Free	V		0.57 e-/adu	0.0

VIMOS_SPEC_BIAS044_0001_A.2.fits	VIMOS.2015-02-13T09:36:30.086	Free	V	0.6 e-/adu	0.0
VIMOS_SPEC_BIAS044_0001_A.3.fits	VIMOS.2015-02-13T09:36:30.085	Free	V	0.56 e-/adu	0.0
VIMOS_SPEC_BIAS044_0002_B.1.fits	VIMOS.2015-02-13T09:37:21.786	Free	V	0.55 e-/adu	0.0
VIMOS_SPEC_BIAS044_0002_B.4.fits	VIMOS.2015-02-13T09:37:21.787	Free	V	0.57 e-/adu	0.0
VIMOS_SPEC_BIAS044_0002_A.2.fits	VIMOS.2015-02-13T09:37:21.792	Free	V	0.6 e-/adu	0.0
VIMOS_SPEC_BIAS044_0002_A.3.fits	VIMOS.2015-02-13T09:37:21.791	Free	V	0.56 e-/adu	0.0
VIMOS_SPEC_BIAS044_0003_B.1.fits	VIMOS.2015-02-13T09:38:12.793	Free	V	0.55 e-/adu	0.0
VIMOS_SPEC_BIAS044_0003_B.4.fits	VIMOS.2015-02-13T09:38:12.792	Free	V	0.57 e-/adu	0.0
VIMOS_SPEC_BIAS044_0003_A.2.fits	VIMOS.2015-02-13T09:38:12.798	Free	V	0.6 e-/adu	0.0
VIMOS_SPEC_BIAS044_0003_A.3.fits	VIMOS.2015-02-13T09:38:12.799	Free	V	0.56 e-/adu	0.0
VIMOS_SPEC_BIAS044_0004_A.2.fits	VIMOS.2015-02-13T09:39:03.805	Free	V	0.6 e-/adu	0.0
VIMOS_SPEC_BIAS044_0004_A.3.fits	VIMOS.2015-02-13T09:39:03.804	Free	V	0.56 e-/adu	0.0
VIMOS_SPEC_BIAS044_0004_B.1.fits	VIMOS.2015-02-13T09:39:03.808	Free	V	0.55 e-/adu	0.0
VIMOS_SPEC_BIAS044_0004_B.4.fits	VIMOS.2015-02-13T09:39:03.809	Free	V	0.57 e-/adu	0.0
VIMOS_SPEC_BIAS044_0005_A.2.fits	VIMOS.2015-02-13T09:39:54.790	Free	V	0.6 e-/adu	0.0
VIMOS_SPEC_BIAS044_0005_A.3.fits	VIMOS.2015-02-13T09:39:54.791	Free	V	0.56 e-/adu	0.0
VIMOS_SPEC_BIAS044_0005_B.1.fits	VIMOS.2015-02-13T09:39:54.795	Free	V	0.55 e-/adu	0.0
VIMOS_SPEC_BIAS044_0005_B.4.fits	VIMOS.2015-02-13T09:39:54.794	Free	V	0.57 e-/adu	0.0

Template VIMOS_img_tec_Focus_Pinhole

Data Product CALIB/FOCUS/MOS

CCD 625kHz,1port,LGCenter/1x1/2048x2440

Lamps QTH10 / Afc

Original Filename	Archive Filename	Grism	Filter	INS.ADF.ID	DET.OUT1.CONAD	EXPTIME
VIMOS_MOS_FOCUS044_0001_A.3.fits	VIMOS.2015-02-13T10:09:26.928	Free	R		1.9 e-/adu	0.999
VIMOS_MOS_FOCUS044_0001_A.2.fits	VIMOS.2015-02-13T10:09:26.927	Free	R		1.9 e-/adu	0.999
VIMOS_MOS_FOCUS044_0001_B.1.fits	VIMOS.2015-02-13T10:09:26.929	Free	R		1.9 e-/adu	0.997
VIMOS_MOS_FOCUS044_0001_B.4.fits	VIMOS.2015-02-13T10:09:26.930	Free	R		1.9 e-/adu	0.997
VIMOS_MOS_FOCUS044_0002_A.3.fits	VIMOS.2015-02-13T10:10:21.455	Free	R		1.9 e-/adu	1.0
VIMOS_MOS_FOCUS044_0002_A.2.fits	VIMOS.2015-02-13T10:10:21.454	Free	R		1.9 e-/adu	1.0
VIMOS_MOS_FOCUS044_0002_B.1.fits	VIMOS.2015-02-13T10:10:21.456	Free	R		1.9 e-/adu	0.996
VIMOS_MOS_FOCUS044_0002_B.4.fits	VIMOS.2015-02-13T10:10:21.457	Free	R		1.9 e-/adu	0.996
VIMOS_MOS_FOCUS044_0003_B.4.fits	VIMOS.2015-02-13T10:11:16.453	Free	R		1.9 e-/adu	0.997
VIMOS_MOS_FOCUS044_0003_B.1.fits	VIMOS.2015-02-13T10:11:16.454	Free	R		1.9 e-/adu	0.997
VIMOS_MOS_FOCUS044_0003_A.2.fits	VIMOS.2015-02-13T10:11:16.460	Free	R		1.9 e-/adu	1.0
VIMOS_MOS_FOCUS044_0003_A.3.fits	VIMOS.2015-02-13T10:11:16.461	Free	R		1.9 e-/adu	1.0
VIMOS_MOS_FOCUS044_0004_A.3.fits	VIMOS.2015-02-13T10:12:09.456	Free	R		1.9 e-/adu	1.0
VIMOS_MOS_FOCUS044_0004_A.2.fits	VIMOS.2015-02-13T10:12:09.457	Free	R		1.9 e-/adu	1.0
VIMOS_MOS_FOCUS044_0004_B.1.fits	VIMOS.2015-02-13T10:12:09.479	Free	R		1.9 e-/adu	0.996
VIMOS_MOS_FOCUS044_0004_B.4.fits	VIMOS.2015-02-13T10:12:09.480	Free	R		1.9 e-/adu	0.996
VIMOS_MOS_FOCUS044_0005_A.2.fits	VIMOS.2015-02-13T10:13:07.444	Free	R		1.9 e-/adu	0.999
VIMOS_MOS_FOCUS044_0005_A.3.fits	VIMOS.2015-02-13T10:13:07.445	Free	R		1.9 e-/adu	0.999
VIMOS_MOS_FOCUS044_0005_B.4.fits	VIMOS.2015-02-13T10:13:07.446	Free	R		1.9 e-/adu	0.997
VIMOS_MOS_FOCUS044_0005_B.1.fits	VIMOS.2015-02-13T10:13:07.447	Free	R		1.9 e-/adu	0.997
VIMOS_MOS_FOCUS044_0006_A.2.fits	VIMOS.2015-02-13T10:14:01.474	Free	R		1.9 e-/adu	1.006
VIMOS_MOS_FOCUS044_0006_A.3.fits	VIMOS.2015-02-13T10:14:01.473	Free	R		1.9 e-/adu	1.006
VIMOS_MOS_FOCUS044_0006_B.4.fits	VIMOS.2015-02-13T10:14:01.472	Free	R		1.9 e-/adu	0.996
VIMOS_MOS_FOCUS044_0006_B.1.fits	VIMOS.2015-02-13T10:14:01.471	Free	R		1.9 e-/adu	0.996
VIMOS_MOS_FOCUS044_0007_A.3.fits	VIMOS.2015-02-13T10:14:56.457	Free	R		1.9 e-/adu	1.0
VIMOS_MOS_FOCUS044_0007_A.2.fits	VIMOS.2015-02-13T10:14:56.460	Free	R		1.9 e-/adu	1.0
VIMOS_MOS_FOCUS044_0007_B.4.fits	VIMOS.2015-02-13T10:14:56.458	Free	R		1.9 e-/adu	0.996
VIMOS_MOS_FOCUS044_0007_B.1.fits	VIMOS.2015-02-13T10:14:56.459	Free	R		1.9 e-/adu	0.996
VIMOS_MOS_FOCUS044_0008_B.4.fits	VIMOS.2015-02-13T10:18:29.192	Free	GG435		1.9 e-/adu	0.596
VIMOS_MOS_FOCUS044_0008_B.1.fits	VIMOS.2015-02-13T10:18:29.193	Free	GG435		1.9 e-/adu	0.596
VIMOS_MOS_FOCUS044_0008_A.3.fits	VIMOS.2015-02-13T10:18:29.195	Free	GG435		1.9 e-/adu	0.601
VIMOS_MOS_FOCUS044_0008_A.2.fits	VIMOS.2015-02-13T10:18:29.194	Free	GG435		1.9 e-/adu	0.601
VIMOS_MOS_FOCUS044_0009_B.4.fits	VIMOS.2015-02-13T10:19:22.470	Free	GG435		1.9 e-/adu	0.597
VIMOS_MOS_FOCUS044_0009_B.1.fits	VIMOS.2015-02-13T10:19:22.469	Free	GG435		1.9 e-/adu	0.597
VIMOS_MOS_FOCUS044_0009_A.3.fits	VIMOS.2015-02-13T10:19:22.472	Free	GG435		1.9 e-/adu	0.599
VIMOS_MOS_FOCUS044_0009_A.2.fits	VIMOS.2015-02-13T10:19:22.471	Free	GG435		1.9 e-/adu	0.599
VIMOS_MOS_FOCUS044_0010_B.1.fits	VIMOS.2015-02-13T10:20:18.447	Free	GG435		1.9 e-/adu	0.597
VIMOS_MOS_FOCUS044_0010_B.4.fits	VIMOS.2015-02-13T10:20:18.446	Free	GG435		1.9 e-/adu	0.597
VIMOS_MOS_FOCUS044_0010_A.2.fits	VIMOS.2015-02-13T10:20:18.448	Free	GG435		1.9 e-/adu	0.602
VIMOS_MOS_FOCUS044_0010_A.3.fits	VIMOS.2015-02-13T10:20:18.449	Free	GG435		1.9 e-/adu	0.602
VIMOS_MOS_FOCUS044_0011_B.4.fits	VIMOS.2015-02-13T10:21:11.463	Free	GG435		1.9 e-/adu	0.597
VIMOS_MOS_FOCUS044_0011_B.1.fits	VIMOS.2015-02-13T10:21:11.462	Free	GG435		1.9 e-/adu	0.597
VIMOS_MOS_FOCUS044_0011_A.2.fits	VIMOS.2015-02-13T10:21:11.464	Free	GG435		1.9 e-/adu	0.599
VIMOS_MOS_FOCUS044_0011_A.3.fits	VIMOS.2015-02-13T10:21:11.465	Free	GG435		1.9 e-/adu	0.599

Template VIMOS_img_cal_ScreenFlat

Data Product CALIB/FLAT,LAMP/IMAGE

CCD 225kHz,1port,LG/1x1/2048x2440

Lamps QTH10

Original Filename	Archive Filename	Filter	DET.OUT1.CONAD	EXPTIME
VIMOS_IMG_LAMP044_0001_B.1.fits	VIMOS.2015-02-13T10:47:57.779	V	1.75 e-/adu	2.998
VIMOS_IMG_LAMP044_0001_B.4.fits	VIMOS.2015-02-13T10:47:57.780	V	1.79 e-/adu	2.998
VIMOS_IMG_LAMP044_0001_A.2.fits	VIMOS.2015-02-13T10:47:57.781	V	1.81 e-/adu	3.002
VIMOS_IMG_LAMP044_0001_A.3.fits	VIMOS.2015-02-13T10:47:57.782	V	1.81 e-/adu	3.002
VIMOS_IMG_LAMP044_0002_B.1.fits	VIMOS.2015-02-13T10:48:57.797	V	1.75 e-/adu	2.997
VIMOS_IMG_LAMP044_0002_B.4.fits	VIMOS.2015-02-13T10:48:57.796	V	1.79 e-/adu	2.997
VIMOS_IMG_LAMP044_0002_A.2.fits	VIMOS.2015-02-13T10:48:57.799	V	1.81 e-/adu	3.002
VIMOS_IMG_LAMP044_0002_A.3.fits	VIMOS.2015-02-13T10:48:57.798	V	1.81 e-/adu	3.002
VIMOS_IMG_LAMP044_0003_B.1.fits	VIMOS.2015-02-13T10:49:57.794	V	1.75 e-/adu	2.995
VIMOS_IMG_LAMP044_0003_B.4.fits	VIMOS.2015-02-13T10:49:57.793	V	1.79 e-/adu	2.995
VIMOS_IMG_LAMP044_0003_A.3.fits	VIMOS.2015-02-13T10:49:57.796	V	1.81 e-/adu	3.006
VIMOS_IMG_LAMP044_0003_A.2.fits	VIMOS.2015-02-13T10:49:57.795	V	1.81 e-/adu	3.006
VIMOS_IMG_LAMP044_0004_A.3.fits	VIMOS.2015-02-13T10:50:57.803	V	1.81 e-/adu	3.0
VIMOS_IMG_LAMP044_0004_A.2.fits	VIMOS.2015-02-13T10:50:57.804	V	1.81 e-/adu	3.0
VIMOS_IMG_LAMP044_0004_B.1.fits	VIMOS.2015-02-13T10:50:57.810	V	1.75 e-/adu	2.997
VIMOS_IMG_LAMP044_0004_B.4.fits	VIMOS.2015-02-13T10:50:57.809	V	1.79 e-/adu	2.997
VIMOS_IMG_LAMP044_0005_A.3.fits	VIMOS.2015-02-13T10:51:57.860	V	1.81 e-/adu	2.998
VIMOS_IMG_LAMP044_0005_A.2.fits	VIMOS.2015-02-13T10:51:57.861	V	1.81 e-/adu	2.998
VIMOS_IMG_LAMP044_0005_B.4.fits	VIMOS.2015-02-13T10:51:57.867	V	1.79 e-/adu	2.996
VIMOS_IMG_LAMP044_0005_B.1.fits	VIMOS.2015-02-13T10:51:57.868	V	1.75 e-/adu	2.996

Template VIMOS_mos_cal_DayCalib

Data Product CALIB/LAMP,AFC/IMAGE

CCD 225kHz,1port,HG,AFC/1x1/2048x400

Lamps Afc

Original Filename	Archive Filename	Grism	Filter	INS.ADF.ID	DET.OUT1.CONAD	EXPTIME
VIMOS_IMG_AFC044_0001_B.4.fits	VIMOS.2015-02-13T10:58:12.482	Free	R		0.54 e-/adu	1.996
VIMOS_IMG_AFC044_0001_B.1.fits	VIMOS.2015-02-13T10:58:12.481	Free	R		0.53 e-/adu	1.996
VIMOS_IMG_AFC044_0001_A.3.fits	VIMOS.2015-02-13T10:58:12.486	Free	R		0.56 e-/adu	1.999
VIMOS_IMG_AFC044_0001_A.2.fits	VIMOS.2015-02-13T10:58:12.487	Free	R		0.55 e-/adu	1.999
VIMOS_IMG_AFC044_0002_A.2.fits	VIMOS.2015-02-13T10:58:42.071	Free	R		0.55 e-/adu	1.999
VIMOS_IMG_AFC044_0002_A.3.fits	VIMOS.2015-02-13T10:58:42.070	Free	R		0.56 e-/adu	1.999
VIMOS_IMG_AFC044_0002_B.1.fits	VIMOS.2015-02-13T10:58:42.075	Free	R		0.53 e-/adu	1.997
VIMOS_IMG_AFC044_0002_B.4.fits	VIMOS.2015-02-13T10:58:42.074	Free	R		0.54 e-/adu	1.997
VIMOS_IMG_AFC044_0003_B.1.fits	VIMOS.2015-02-13T10:59:10.068	Free	R		0.53 e-/adu	1.996
VIMOS_IMG_AFC044_0003_B.4.fits	VIMOS.2015-02-13T10:59:10.067	Free	R		0.54 e-/adu	1.996
VIMOS_IMG_AFC044_0003_A.3.fits	VIMOS.2015-02-13T10:59:10.073	Free	R		0.56 e-/adu	2.007
VIMOS_IMG_AFC044_0003_A.2.fits	VIMOS.2015-02-13T10:59:10.074	Free	R		0.55 e-/adu	2.007
VIMOS_IMG_AFC044_0004_A.2.fits	VIMOS.2015-02-13T10:59:38.167	Free	R		0.55 e-/adu	2.0
VIMOS_IMG_AFC044_0004_A.3.fits	VIMOS.2015-02-13T10:59:38.166	Free	R		0.56 e-/adu	2.0
VIMOS_IMG_AFC044_0004_B.1.fits	VIMOS.2015-02-13T10:59:38.172	Free	R		0.53 e-/adu	1.996
VIMOS_IMG_AFC044_0004_B.4.fits	VIMOS.2015-02-13T10:59:38.171	Free	R		0.54 e-/adu	1.996
VIMOS_IMG_AFC044_0005_B.1.fits	VIMOS.2015-02-13T11:18:04.680	Free	R	P4bQ1_final_vm_MR_M1Q1.adp	0.53 e-/adu	1.998
VIMOS_IMG_AFC044_0005_B.4.fits	VIMOS.2015-02-13T11:18:04.681	Free	R	P4bQ4_final_vm_MR_M1Q4.adp	0.54 e-/adu	1.998
VIMOS_IMG_AFC044_0005_A.3.fits	VIMOS.2015-02-13T11:18:04.683	Free	R	P4bQ3_final_vm_MR_M1Q3.adp	0.56 e-/adu	2.003
VIMOS_IMG_AFC044_0005_A.2.fits	VIMOS.2015-02-13T11:18:04.684	Free	R	P4bQ2_final_vm_MR_M1Q2.adp	0.55 e-/adu	2.003
VIMOS_IMG_AFC044_0006_A.2.fits	VIMOS.2015-02-13T11:18:34.067	Free	R	P4bQ2_final_vm_MR_M1Q2.adp	0.55 e-/adu	2.002
VIMOS_IMG_AFC044_0006_A.3.fits	VIMOS.2015-02-13T11:18:34.068	Free	R	P4bQ3_final_vm_MR_M1Q3.adp	0.56 e-/adu	2.002
VIMOS_IMG_AFC044_0006_B.1.fits	VIMOS.2015-02-13T11:18:34.073	Free	R	P4bQ1_final_vm_MR_M1Q1.adp	0.53 e-/adu	1.995
VIMOS_IMG_AFC044_0006_B.4.fits	VIMOS.2015-02-13T11:18:34.074	Free	R	P4bQ4_final_vm_MR_M1Q4.adp	0.54 e-/adu	1.995

Template VIMOS_mos_cal_DayCalib

Data Product CALIB/FLAT,LAMP/MOS

CCD 225kHz,1port,HG/1x1/2048x4096

Lamps QTH10

Original Filename	Archive Filename	Grism	Filter	INS.ADF.ID	DET.OUT1.CONAD	EXPTIME
VIMOS_MOS_LAMP044_0001_A.2.fits	VIMOS.2015-02-13T11:02:13.196	MR	GG475	P4bQ2_final_vm_MR_M1Q2.adp	0.6 e-/adu	18.0
VIMOS_MOS_LAMP044_0001_A.3.fits	VIMOS.2015-02-13T11:02:13.197	MR	GG475	P4bQ3_final_vm_MR_M1Q3.adp	0.56 e-/adu	18.0
VIMOS_MOS_LAMP044_0001_B.1.fits	VIMOS.2015-02-13T11:02:13.198	MR	GG475	P4bQ1_final_vm_MR_M1Q1.adp	0.55 e-/adu	17.997
VIMOS_MOS_LAMP044_0001_B.4.fits	VIMOS.2015-02-13T11:02:13.199	MR	GG475	P4bQ4_final_vm_MR_M1Q4.adp	0.57 e-/adu	17.997
VIMOS_MOS_LAMP044_0002_A.3.fits	VIMOS.2015-02-13T11:03:29.935	MR	GG475	P4bQ3_final_vm_MR_M1Q3.adp	0.56 e-/adu	18.0

VIMOS_MOS_LAMP044_0002_A.2.fits	VIMOS.2015-02-13T11:03:29.936	MR	GG475	P4bQ2_final_vm_MR_M1Q2.adp	0.6 e-/adu	18.0
VIMOS_MOS_LAMP044_0002_B.4.fits	VIMOS.2015-02-13T11:03:29.939	MR	GG475	P4bQ4_final_vm_MR_M1Q4.adp	0.57 e-/adu	17.996
VIMOS_MOS_LAMP044_0002_B.1.fits	VIMOS.2015-02-13T11:03:29.938	MR	GG475	P4bQ1_final_vm_MR_M1Q1.adp	0.55 e-/adu	17.996
VIMOS_MOS_LAMP044_0003_A.2.fits	VIMOS.2015-02-13T11:04:46.956	MR	GG475	P4bQ2_final_vm_MR_M1Q2.adp	0.6 e-/adu	18.008
VIMOS_MOS_LAMP044_0003_A.3.fits	VIMOS.2015-02-13T11:04:46.955	MR	GG475	P4bQ3_final_vm_MR_M1Q3.adp	0.56 e-/adu	18.008
VIMOS_MOS_LAMP044_0003_B.4.fits	VIMOS.2015-02-13T11:04:46.958	MR	GG475	P4bQ4_final_vm_MR_M1Q4.adp	0.57 e-/adu	17.997
VIMOS_MOS_LAMP044_0003_B.1.fits	VIMOS.2015-02-13T11:04:46.957	MR	GG475	P4bQ1_final_vm_MR_M1Q1.adp	0.55 e-/adu	17.997
VIMOS_MOS_LAMP044_0004_A.2.fits	VIMOS.2015-02-13T11:06:03.975	MR	GG475	P4bQ2_final_vm_MR_M1Q2.adp	0.6 e-/adu	17.999
VIMOS_MOS_LAMP044_0004_A.3.fits	VIMOS.2015-02-13T11:06:03.974	MR	GG475	P4bQ3_final_vm_MR_M1Q3.adp	0.56 e-/adu	17.999
VIMOS_MOS_LAMP044_0004_B.4.fits	VIMOS.2015-02-13T11:06:03.986	MR	GG475	P4bQ4_final_vm_MR_M1Q4.adp	0.57 e-/adu	17.996
VIMOS_MOS_LAMP044_0004_B.1.fits	VIMOS.2015-02-13T11:06:03.987	MR	GG475	P4bQ1_final_vm_MR_M1Q1.adp	0.55 e-/adu	17.996
VIMOS_MOS_LAMP044_0005_B.1.fits	VIMOS.2015-02-13T11:07:21.095	MR	GG475	P4bQ1_final_vm_MR_M1Q1.adp	0.55 e-/adu	17.995
VIMOS_MOS_LAMP044_0005_B.4.fits	VIMOS.2015-02-13T11:07:21.094	MR	GG475	P4bQ4_final_vm_MR_M1Q4.adp	0.57 e-/adu	17.995
VIMOS_MOS_LAMP044_0005_A.3.fits	VIMOS.2015-02-13T11:07:21.104	MR	GG475	P4bQ3_final_vm_MR_M1Q3.adp	0.56 e-/adu	17.999
VIMOS_MOS_LAMP044_0005_A.2.fits	VIMOS.2015-02-13T11:07:21.105	MR	GG475	P4bQ2_final_vm_MR_M1Q2.adp	0.6 e-/adu	17.999
VIMOS_MOS_LAMP044_0006_A.2.fits	VIMOS.2015-02-13T11:21:11.127	MR	GG475	VCC1110_NQ2_contributed_vm_MR_	0.6 e-/adu	18.003
VIMOS_MOS_LAMP044_0006_A.3.fits	VIMOS.2015-02-13T11:21:11.126	MR	GG475	VCC1110_NQ3_contributed_vm_MR_	0.56 e-/adu	18.003
VIMOS_MOS_LAMP044_0006_B.4.fits	VIMOS.2015-02-13T11:21:11.131	MR	GG475	VCC1110_NQ4_contributed_vm_MR_	0.57 e-/adu	17.996
VIMOS_MOS_LAMP044_0006_B.1.fits	VIMOS.2015-02-13T11:21:11.132	MR	GG475	VCC1110_NQ1_contributed_vm_MR_	0.55 e-/adu	17.996
VIMOS_MOS_LAMP044_0007_A.3.fits	VIMOS.2015-02-13T11:22:27.937	MR	GG475	VCC1110_NQ3_contributed_vm_MR_	0.56 e-/adu	18.001
VIMOS_MOS_LAMP044_0007_A.2.fits	VIMOS.2015-02-13T11:22:27.936	MR	GG475	VCC1110_NQ2_contributed_vm_MR_	0.6 e-/adu	18.001
VIMOS_MOS_LAMP044_0007_B.1.fits	VIMOS.2015-02-13T11:22:27.941	MR	GG475	VCC1110_NQ1_contributed_vm_MR_	0.55 e-/adu	17.996
VIMOS_MOS_LAMP044_0007_B.4.fits	VIMOS.2015-02-13T11:22:27.942	MR	GG475	VCC1110_NQ4_contributed_vm_MR_	0.57 e-/adu	17.996
VIMOS_MOS_LAMP044_0008_B.1.fits	VIMOS.2015-02-13T11:23:44.950	MR	GG475	VCC1110_NQ1_contributed_vm_MR_	0.55 e-/adu	17.996
VIMOS_MOS_LAMP044_0008_B.4.fits	VIMOS.2015-02-13T11:23:44.949	MR	GG475	VCC1110_NQ4_contributed_vm_MR_	0.57 e-/adu	17.996
VIMOS_MOS_LAMP044_0008_A.2.fits	VIMOS.2015-02-13T11:23:44.955	MR	GG475	VCC1110_NQ2_contributed_vm_MR_	0.6 e-/adu	17.999
VIMOS_MOS_LAMP044_0008_A.3.fits	VIMOS.2015-02-13T11:23:44.956	MR	GG475	VCC1110_NQ3_contributed_vm_MR_	0.56 e-/adu	17.999
VIMOS_MOS_LAMP044_0009_B.4.fits	VIMOS.2015-02-13T11:25:01.939	MR	GG475	VCC1110_NQ4_contributed_vm_MR_	0.57 e-/adu	17.997
VIMOS_MOS_LAMP044_0009_B.1.fits	VIMOS.2015-02-13T11:25:01.938	MR	GG475	VCC1110_NQ1_contributed_vm_MR_	0.55 e-/adu	17.997
VIMOS_MOS_LAMP044_0009_A.3.fits	VIMOS.2015-02-13T11:25:01.944	MR	GG475	VCC1110_NQ3_contributed_vm_MR_	0.56 e-/adu	17.999
VIMOS_MOS_LAMP044_0009_A.2.fits	VIMOS.2015-02-13T11:25:01.945	MR	GG475	VCC1110_NQ2_contributed_vm_MR_	0.6 e-/adu	17.999
VIMOS_MOS_LAMP044_0010_A.3.fits	VIMOS.2015-02-13T11:26:18.975	MR	GG475	VCC1110_NQ3_contributed_vm_MR_	0.56 e-/adu	18.005
VIMOS_MOS_LAMP044_0010_A.2.fits	VIMOS.2015-02-13T11:26:18.974	MR	GG475	VCC1110_NQ2_contributed_vm_MR_	0.6 e-/adu	18.005
VIMOS_MOS_LAMP044_0010_B.4.fits	VIMOS.2015-02-13T11:26:18.978	MR	GG475	VCC1110_NQ4_contributed_vm_MR_	0.57 e-/adu	17.996
VIMOS_MOS_LAMP044_0010_B.1.fits	VIMOS.2015-02-13T11:26:18.977	MR	GG475	VCC1110_NQ1_contributed_vm_MR_	0.55 e-/adu	17.996

Template VIMOS_mos_cal_DayCalib

Data Product CALIB/WAVE,LAMP/MOS

CCD 225kHz,1port,HG/1x1/2048x4096

Lamps He / Ar

Original Filename	Archive Filename	Grism	Filter	INS.ADF.ID	DET.OUT1.CONAD	EXPTIME
VIMOS_MOS_WAVE044_0001_B.1.fits	VIMOS.2015-02-13T11:08:46.456	MR	GG475	P4bQ1_final_vm_MR_M1Q1.adp	0.55 e-/adu	8.988
VIMOS_MOS_WAVE044_0001_A.2.fits	VIMOS.2015-02-13T11:08:46.458	MR	GG475	P4bQ2_final_vm_MR_M1Q2.adp	0.6 e-/adu	9.0
VIMOS_MOS_WAVE044_0001_A.3.fits	VIMOS.2015-02-13T11:08:46.457	MR	GG475	P4bQ3_final_vm_MR_M1Q3.adp	0.56 e-/adu	9.0
VIMOS_MOS_WAVE044_0001_B.4.fits	VIMOS.2015-02-13T11:08:46.455	MR	GG475	P4bQ4_final_vm_MR_M1Q4.adp	0.57 e-/adu	8.988
VIMOS_MOS_WAVE044_0002_A.2.fits	VIMOS.2015-02-13T11:27:42.505	MR	GG475	VCC1110_NQ2_contributed_vm_MR_	0.6 e-/adu	9.001
VIMOS_MOS_WAVE044_0002_A.3.fits	VIMOS.2015-02-13T11:27:42.504	MR	GG475	VCC1110_NQ3_contributed_vm_MR_	0.56 e-/adu	9.001
VIMOS_MOS_WAVE044_0002_B.1.fits	VIMOS.2015-02-13T11:27:42.508	MR	GG475	VCC1110_NQ1_contributed_vm_MR_	0.55 e-/adu	8.988
VIMOS_MOS_WAVE044_0002_B.4.fits	VIMOS.2015-02-13T11:27:42.509	MR	GG475	VCC1110_NQ4_contributed_vm_MR_	0.57 e-/adu	8.988

Template VIMOS_ifu_cal_DayCalib

Data Product CALIB/FLAT,LAMP/IFU

CCD 225kHz,1port,HG/1x1/2048x4096

Lamps QTH50

Original Filename	Archive Filename	Grism	Filter	IFUE	IFUS	DET.OUT1.CONAD	EXPTIME
VIMOS_IFU_LAMP044_0001_B.4.fits	VIMOS.2015-02-13T11:38:37.134	HR_orange	GG435	0.67	small	0.57 e-/adu	19.997
VIMOS_IFU_LAMP044_0001_B.1.fits	VIMOS.2015-02-13T11:38:37.135	HR_orange	GG435	0.67	small	0.55 e-/adu	19.997
VIMOS_IFU_LAMP044_0001_A.2.fits	VIMOS.2015-02-13T11:38:37.137	HR_orange	GG435	0.67	small	0.6 e-/adu	20.001
VIMOS_IFU_LAMP044_0001_A.3.fits	VIMOS.2015-02-13T11:38:37.136	HR_orange	GG435	0.67	small	0.56 e-/adu	20.001
VIMOS_IFU_LAMP044_0002_B.1.fits	VIMOS.2015-02-13T11:39:58.955	HR_orange	GG435	0.67	small	0.55 e-/adu	19.995
VIMOS_IFU_LAMP044_0002_B.4.fits	VIMOS.2015-02-13T11:39:58.954	HR_orange	GG435	0.67	small	0.57 e-/adu	19.995
VIMOS_IFU_LAMP044_0002_A.3.fits	VIMOS.2015-02-13T11:39:58.956	HR_orange	GG435	0.67	small	0.56 e-/adu	20.002
VIMOS_IFU_LAMP044_0002_A.2.fits	VIMOS.2015-02-13T11:39:58.957	HR_orange	GG435	0.67	small	0.6 e-/adu	20.002
VIMOS_IFU_LAMP044_0003_B.4.fits	VIMOS.2015-02-13T11:41:19.954	HR_orange	GG435	0.67	small	0.57 e-/adu	19.996
VIMOS_IFU_LAMP044_0003_B.1.fits	VIMOS.2015-02-13T11:41:19.953	HR_orange	GG435	0.67	small	0.55 e-/adu	19.996
VIMOS_IFU_LAMP044_0003_A.2.fits	VIMOS.2015-02-13T11:41:19.956	HR_orange	GG435	0.67	small	0.6 e-/adu	20.003
VIMOS_IFU_LAMP044_0003_A.3.fits	VIMOS.2015-02-13T11:41:19.955	HR_orange	GG435	0.67	small	0.56 e-/adu	20.003
VIMOS_IFU_LAMP044_0004_B.1.fits	VIMOS.2015-02-13T11:42:40.953	HR_orange	GG435	0.67	small	0.55 e-/adu	19.995

VIMOS_IFU_LAMP044_0004_B.4.fits	VIMOS.2015-02-13T11:42:40.952	HR_orange	GG435	0.67	small	0.57 e-/adu	19.995
VIMOS_IFU_LAMP044_0004_A.3.fits	VIMOS.2015-02-13T11:42:40.955	HR_orange	GG435	0.67	small	0.56 e-/adu	20.003
VIMOS_IFU_LAMP044_0004_A.2.fits	VIMOS.2015-02-13T11:42:40.956	HR_orange	GG435	0.67	small	0.6 e-/adu	20.003
VIMOS_IFU_LAMP044_0005_B.1.fits	VIMOS.2015-02-13T11:44:01.981	HR_orange	GG435	0.67	small	0.55 e-/adu	19.996
VIMOS_IFU_LAMP044_0005_B.4.fits	VIMOS.2015-02-13T11:44:01.982	HR_orange	GG435	0.67	small	0.57 e-/adu	19.996
VIMOS_IFU_LAMP044_0005_A.3.fits	VIMOS.2015-02-13T11:44:01.987	HR_orange	GG435	0.67	small	0.56 e-/adu	20.003
VIMOS_IFU_LAMP044_0005_A.2.fits	VIMOS.2015-02-13T11:44:01.986	HR_orange	GG435	0.67	small	0.6 e-/adu	20.003
VIMOS_IFU_LAMP044_0006_A.2.fits	VIMOS.2015-02-13T11:50:31.605	LR_red	OS-red	0.33	small	0.6 e-/adu	1.0
VIMOS_IFU_LAMP044_0006_A.3.fits	VIMOS.2015-02-13T11:50:31.604	LR_red	OS-red	0.33	small	0.56 e-/adu	1.0
VIMOS_IFU_LAMP044_0006_B.1.fits	VIMOS.2015-02-13T11:50:31.608	LR_red	OS-red	0.33	small	0.55 e-/adu	0.997
VIMOS_IFU_LAMP044_0006_B.4.fits	VIMOS.2015-02-13T11:50:31.607	LR_red	OS-red	0.33	small	0.57 e-/adu	0.997
VIMOS_IFU_LAMP044_0007_A.2.fits	VIMOS.2015-02-13T11:51:33.941	LR_red	OS-red	0.33	small	0.6 e-/adu	1.005
VIMOS_IFU_LAMP044_0007_A.3.fits	VIMOS.2015-02-13T11:51:33.942	LR_red	OS-red	0.33	small	0.56 e-/adu	1.005
VIMOS_IFU_LAMP044_0007_B.4.fits	VIMOS.2015-02-13T11:51:33.945	LR_red	OS-red	0.33	small	0.57 e-/adu	0.997
VIMOS_IFU_LAMP044_0007_B.1.fits	VIMOS.2015-02-13T11:51:33.944	LR_red	OS-red	0.33	small	0.55 e-/adu	0.997
VIMOS_IFU_LAMP044_0008_A.3.fits	VIMOS.2015-02-13T11:52:36.900	LR_red	OS-red	0.33	small	0.56 e-/adu	1.003
VIMOS_IFU_LAMP044_0008_A.2.fits	VIMOS.2015-02-13T11:52:36.899	LR_red	OS-red	0.33	small	0.6 e-/adu	1.003
VIMOS_IFU_LAMP044_0008_B.1.fits	VIMOS.2015-02-13T11:52:36.901	LR_red	OS-red	0.33	small	0.55 e-/adu	0.995
VIMOS_IFU_LAMP044_0008_B.4.fits	VIMOS.2015-02-13T11:52:36.902	LR_red	OS-red	0.33	small	0.57 e-/adu	0.995
VIMOS_IFU_LAMP044_0009_A.3.fits	VIMOS.2015-02-13T11:53:38.950	LR_red	OS-red	0.33	small	0.56 e-/adu	1.004
VIMOS_IFU_LAMP044_0009_A.2.fits	VIMOS.2015-02-13T11:53:38.947	LR_red	OS-red	0.33	small	0.6 e-/adu	1.004
VIMOS_IFU_LAMP044_0009_B.1.fits	VIMOS.2015-02-13T11:53:38.949	LR_red	OS-red	0.33	small	0.55 e-/adu	0.995
VIMOS_IFU_LAMP044_0009_B.4.fits	VIMOS.2015-02-13T11:53:38.948	LR_red	OS-red	0.33	small	0.57 e-/adu	0.995
VIMOS_IFU_LAMP044_0010_A.3.fits	VIMOS.2015-02-13T11:54:40.948	LR_red	OS-red	0.33	small	0.56 e-/adu	1.0
VIMOS_IFU_LAMP044_0010_A.2.fits	VIMOS.2015-02-13T11:54:40.945	LR_red	OS-red	0.33	small	0.6 e-/adu	1.0
VIMOS_IFU_LAMP044_0010_B.1.fits	VIMOS.2015-02-13T11:54:40.946	LR_red	OS-red	0.33	small	0.55 e-/adu	0.995
VIMOS_IFU_LAMP044_0010_B.4.fits	VIMOS.2015-02-13T11:54:40.947	LR_red	OS-red	0.33	small	0.57 e-/adu	0.995

Template VIMOS_ifu_cal_DayCalib

Data Product CALIB/WAVE,LAMP/IFU

CCD 225kHz,1port,HG/1x1/2048x4096

Lamps He / Ne / Ar

Original Filename	Archive Filename	Grism	Filter	IFUE	IFUS	DET.OUT1.CONAD	EXPTIME
VIMOS_IFU_WAVE044_0001_A.3.fits	VIMOS.2015-02-13T11:45:17.305	HR_orange	GG435	0.67	small	0.56 e-/adu	13.016
VIMOS_IFU_WAVE044_0001_A.2.fits	VIMOS.2015-02-13T11:45:17.306	HR_orange	GG435	0.67	small	0.6 e-/adu	13.016
VIMOS_IFU_WAVE044_0001_B.4.fits	VIMOS.2015-02-13T11:45:17.310	HR_orange	GG435	0.67	small	0.57 e-/adu	12.982
VIMOS_IFU_WAVE044_0001_B.1.fits	VIMOS.2015-02-13T11:45:17.311	HR_orange	GG435	0.67	small	0.55 e-/adu	12.982

Template VIMOS_ifu_cal_DayCalib

Data Product CALIB/WAVE,LAMP/IFU

CCD 225kHz,1port,HG/1x1/2048x4096

Lamps He / Ar

Original Filename	Archive Filename	Grism	Filter	IFUE	IFUS	DET.OUT1.CONAD	EXPTIME
VIMOS_IFU_WAVE044_0002_A.2.fits	VIMOS.2015-02-13T11:55:37.554	LR_red	OS-red	0.33	small	0.6 e-/adu	10.005
VIMOS_IFU_WAVE044_0002_A.3.fits	VIMOS.2015-02-13T11:55:37.551	LR_red	OS-red	0.33	small	0.56 e-/adu	10.005
VIMOS_IFU_WAVE044_0002_B.4.fits	VIMOS.2015-02-13T11:55:37.553	LR_red	OS-red	0.33	small	0.57 e-/adu	9.986
VIMOS_IFU_WAVE044_0002_B.1.fits	VIMOS.2015-02-13T11:55:37.552	LR_red	OS-red	0.33	small	0.55 e-/adu	9.986

Nighttime Observations

OB 1158045 | 23:58:42 > 01:09:13 | 01:10:31 | Mode: Commissioning | Loss: No Loss | Status X > C

Grade A

Instrument SPHERE

Name GGTau_IRDIS

Target GG Tau A

PI Esther Buenzli

Run 60.A-9370(A)

Container -

Public Comments Seeing around 0.9" during the exposure. The loop was stable. Exp time was readjusted as requested by the user, to reach the highest flux possible without saturating.

13 Feb 01:31

Files produced and additional information

OBS.ID 1158045

OBS.START 2015-02-12T23:58:42

Template SPHERE_irdis_dbi_obs

Original Filename	Archive Filename	TPLEXPNO/NEXP	DPR.TYPE	INS.FILT1.NAME	EXPTIME
SPHERE_IRDIS_OBS044_0001.fits	SPHER.2015-02-13T00:10:24.660	1/1	OBJECT		2.0
SPHERE_IRDIS_OBS044_0002.fits	SPHER.2015-02-13T00:15:55.066	1/14	OBJECT,FLUX		2.0

SPHERE_IRDIS_OBS044_0003.fits	SPHER.2015-02-13T00:17:05.503	2/14	OBJECT,CENTER	2.0
SPHERE_IRDIS_OBS044_0004.fits	SPHER.2015-02-13T00:17:37.934	3/14	OBJECT	2.0
SPHERE_IRDIS_OBS044_0005.fits	SPHER.2015-02-13T00:22:35.631	4/14	OBJECT	2.0
SPHERE_IRDIS_OBS044_0006.fits	SPHER.2015-02-13T00:27:31.761	5/14	OBJECT	2.0
SPHERE_IRDIS_OBS044_0007.fits	SPHER.2015-02-13T00:32:29.631	6/14	OBJECT	2.0
SPHERE_IRDIS_OBS044_0008.fits	SPHER.2015-02-13T00:37:27.629	7/14	OBJECT	2.0
SPHERE_IRDIS_OBS044_0009.fits	SPHER.2015-02-13T00:42:25.627	8/14	OBJECT	2.0
SPHERE_IRDIS_OBS044_0010.fits	SPHER.2015-02-13T00:47:21.515	9/14	OBJECT	2.0
SPHERE_IRDIS_OBS044_0011.fits	SPHER.2015-02-13T00:52:20.741	10/14	OBJECT	2.0
SPHERE_IRDIS_OBS044_0012.fits	SPHER.2015-02-13T00:57:21.638	11/14	OBJECT	2.0
SPHERE_IRDIS_OBS044_0013.fits	SPHER.2015-02-13T01:02:18.530	12/14	OBJECT	2.0
SPHERE_IRDIS_OBS044_0014.fits	SPHER.2015-02-13T01:07:34.820	13/14	OBJECT,CENTER	2.0
SPHERE_IRDIS_OBS044_0015.fits	SPHER.2015-02-13T01:08:37.094	14/14	OBJECT,FLUX	2.0

OB 1164954 | 01:11:02 > 01:19:13 | 00:08:11 | Mode: Commissioning | Loss: No Loss | Status A

Grade _

Instrument SPHERE
Name MOV_Hygiea
Target 10 Hygiea
PI Christophe Dumas
Run 60.A-9379(A)
Container Concatenation 1164953

Public Comments

Files produced and additional information

OBS.ID 1164954
OBS.START 2015-02-13T01:11:02
Template SPHERE_irdis_ci_obs

Original Filename	Archive Filename	TPL.EXPNO/NEXP	DPR.TYPE	INS.FILT1.NAME	EXPTIME
SPHERE_IRDIS_OBS044_0016.fits	SPHER.2015-02-13T01:18:15.989	1/9	OBJECT		4.0
SPHERE_IRDIS_OBS044_0017.fits	SPHER.2015-02-13T01:18:43.365	2/9	OBJECT		4.0

OB 1164954 | 01:21:18 > 01:26:43 | 00:05:25 | Mode: Commissioning | Loss: No Loss | Status X > C

Grade A

Instrument SPHERE
Name MOV_Hygiea
Target 10 Hygiea
PI Christophe Dumas
Run 60.A-9379(A)
Container Concatenation 1164953

Public Comments Loop was stable.
13 Feb 03:08

Files produced and additional information

OBS.ID 1164954
OBS.START 2015-02-13T01:21:18
Template SPHERE_irdis_ci_obs

Original Filename	Archive Filename	TPL.EXPNO/NEXP	DPR.TYPE	INS.FILT1.NAME	EXPTIME
SPHERE_IRDIS_OBS044_0018.fits	SPHER.2015-02-13T01:21:53.052	1/9	OBJECT		4.0
SPHERE_IRDIS_OBS044_0019.fits	SPHER.2015-02-13T01:22:21.534	2/9	OBJECT		4.0
SPHERE_IRDIS_OBS044_0020.fits	SPHER.2015-02-13T01:22:49.167	3/9	OBJECT		4.0
SPHERE_IRDIS_OBS044_0021.fits	SPHER.2015-02-13T01:23:16.595	4/9	OBJECT		4.0
SPHERE_IRDIS_SKY044_0001.fits	SPHER.2015-02-13T01:24:03.931	5/9	SKY		4.0
SPHERE_IRDIS_OBS044_0022.fits	SPHER.2015-02-13T01:24:51.389	6/9	OBJECT		4.0
SPHERE_IRDIS_OBS044_0023.fits	SPHER.2015-02-13T01:25:18.805	7/9	OBJECT		4.0
SPHERE_IRDIS_OBS044_0024.fits	SPHER.2015-02-13T01:25:47.728	8/9	OBJECT		4.0
SPHERE_IRDIS_OBS044_0025.fits	SPHER.2015-02-13T01:26:15.098	9/9	OBJECT		4.0

OB 1164957 | 01:27:20 > 01:37:16 | 00:09:56 | Mode: Commissioning | Loss: No Loss | Status A

Grade X

Instrument SPHERE
Name PSF_Hygiea
Target 1111 BD241760
PI Christophe Dumas
Run 60.A-9379(A)
Container Concatenation 1164953

Public Comments Saturated.
13 Feb 01:37

Files produced and additional information

OBS.ID 1164957
OBS.START 2015-02-13T01:27:20

Template SPHERE_irdis_ci_obs

Original Filename	Archive Filename	TPL.EXPNO/NEXP	DPR.TYPE	INS.FILT1.NAME	EXPTIME
SPHERE_IRDIS_OBS044_0026.fits	SPHER.2015-02-13T01:36:18.941	1/5	OBJECT		4.0
SPHERE_IRDIS_OBS044_0027.fits	SPHER.2015-02-13T01:36:47.411	2/5	OBJECT		4.0

OB 1164957 | 01:38:03 > 01:41:16 | 00:03:13 | Mode: Commissioning | Loss: No Loss | Status X > C

Grade A

Instrument SPHERE
Name PSF_Hygiea
Target 1111 BD241760
PI Christophe Dumas
Run 60.A-9379(A)
Container Concatenation 1164953

Public Comments

Files produced and additional information

OBS.ID 1164957
OBS.START 2015-02-13T01:38:03

Template SPHERE_irdis_ci_obs

Original Filename	Archive Filename	TPL.EXPNO/NEXP	DPR.TYPE	INS.FILT1.NAME	EXPTIME
SPHERE_IRDIS_OBS044_0028.fits	SPHER.2015-02-13T01:38:17.825	1/5	OBJECT		2.0
SPHERE_IRDIS_OBS044_0029.fits	SPHER.2015-02-13T01:38:49.977	2/5	OBJECT		2.0
SPHERE_IRDIS_OBS044_0030.fits	SPHER.2015-02-13T01:39:23.217	3/5	OBJECT		2.0
SPHERE_IRDIS_OBS044_0031.fits	SPHER.2015-02-13T01:39:55.896	4/5	OBJECT		2.0
SPHERE_IRDIS_SKY044_0002.fits	SPHER.2015-02-13T01:40:46.986	5/5	SKY		2.0

OB 1164933 | 01:41:59 > 01:53:37 | 00:11:38 | Mode: Commissioning | Loss: No Loss | Status A

Grade X

Instrument SPHERE
Name MOV_Juno
Target 3 Juno
PI Christophe Dumas
Run 60.A-9379(A)
Container Concatenation 1164932
Public Comments OB crashed while integrating due to a sudden turbulence.
13 Feb 01:53

Files produced and additional information

OBS.ID 1164933
OBS.START 2015-02-13T01:41:59

Template SPHERE_irdis_ci_obs

Original Filename	Archive Filename	TPL.EXPNO/NEXP	DPR.TYPE	INS.FILT1.NAME	EXPTIME
SPHERE_IRDIS_OBS044_0032.fits	SPHER.2015-02-13T01:50:42.671	1/9	OBJECT		2.0
SPHERE_IRDIS_OBS044_0033.fits	SPHER.2015-02-13T01:51:17.033	2/9	OBJECT		2.0
SPHERE_IRDIS_OBS044_0034.fits	SPHER.2015-02-13T01:51:49.344	3/9	OBJECT		2.0
SPHERE_IRDIS_OBS044_0035.fits	SPHER.2015-02-13T01:52:22.969	4/9	OBJECT		2.0
SPHERE_IRDIS_SKY044_0003.fits	SPHER.2015-02-13T01:53:14.973	5/9	SKY		2.0

OB 1164933 | 01:55:38 > 02:01:11 | 00:05:33 | Mode: Commissioning | Loss: No Loss | Status X > C

Grade A

Instrument SPHERE
Name MOV_Juno
Target 3 Juno
PI Christophe Dumas
Run 60.A-9379(A)
Container Concatenation 1164932
Public Comments Loop broke once due to turbulence, but we reexecuted the OB and it then remained stable.
13 Feb 03:10

Files produced and additional information

OBS.ID 1164933
OBS.START 2015-02-13T01:55:38

Template SPHERE_irdis_ci_obs

Original Filename	Archive Filename	TPL.EXPNO/NEXP	DPR.TYPE	INS.FILT1.NAME	EXPTIME
SPHERE_IRDIS_OBS044_0036.fits	SPHER.2015-02-13T01:55:52.236	1/9	OBJECT		2.0

SPHERE_IRDIS_OBS044_0037.fits	SPHER.2015-02-13T01:56:25.541	2/9	OBJECT	2.0
SPHERE_IRDIS_OBS044_0038.fits	SPHER.2015-02-13T01:56:58.080	3/9	OBJECT	2.0
SPHERE_IRDIS_OBS044_0039.fits	SPHER.2015-02-13T01:57:31.271	4/9	OBJECT	2.0
SPHERE_IRDIS_SKY044_0004.fits	SPHER.2015-02-13T01:58:23.119	5/9	SKY	2.0
SPHERE_IRDIS_OBS044_0040.fits	SPHER.2015-02-13T01:58:59.712	6/9	OBJECT	2.0
SPHERE_IRDIS_OBS044_0041.fits	SPHER.2015-02-13T01:59:33.002	7/9	OBJECT	2.0
SPHERE_IRDIS_OBS044_0042.fits	SPHER.2015-02-13T02:00:05.306	8/9	OBJECT	2.0
SPHERE_IRDIS_OBS044_0043.fits	SPHER.2015-02-13T02:00:38.341	9/9	OBJECT	2.0

OB 1164936 | 02:01:25 > 02:08:16 | 00:06:51 | Mode: Commissioning | Loss: No Loss | Status A Grade X

Instrument SPHERE
Name PSF_Juno
Target 1252 HD80903
PI Christophe Dumas
Run 60.A-9379(A)
Container Concatenation 1164932
Public Comments Saturated.
13 Feb 02:08

Files produced and additional information

OBS.ID 1164936
OBS.START 2015-02-13T02:01:25
Template SPHERE_irdis_ci_obs

Original Filename	Archive Filename	TPL.EXPNO/NEXP	DPR.TYPE	INS.FILT1.NAME	EXPTIME
SPHERE_IRDIS_OBS044_0044.fits	SPHER.2015-02-13T02:07:43.439	1/5	OBJECT		2.0

OB 1164936 | 02:08:30 > 02:10:18 | 00:01:48 | Mode: Commissioning | Loss: No Loss | Status A Grade X

Instrument SPHERE
Name PSF_Juno
Target 1252 HD80903
PI Christophe Dumas
Run 60.A-9379(A)
Container Concatenation 1164932
Public Comments Saturated again after decreasing the DIT. We try with a different ND filter.
13 Feb 02:10

Files produced and additional information

OBS.ID 1164936
OBS.START 2015-02-13T02:08:30
Template SPHERE_irdis_ci_obs

Original Filename	Archive Filename	TPL.EXPNO/NEXP	DPR.TYPE	INS.FILT1.NAME	EXPTIME
SPHERE_IRDIS_OBS044_0045.fits	SPHER.2015-02-13T02:08:47.020	1/5	OBJECT		1.0
SPHERE_IRDIS_OBS044_0046.fits	SPHER.2015-02-13T02:09:09.180	2/5	OBJECT		1.0
SPHERE_IRDIS_OBS044_0047.fits	SPHER.2015-02-13T02:09:32.489	3/5	OBJECT		1.0
SPHERE_IRDIS_OBS044_0048.fits	SPHER.2015-02-13T02:09:55.006	4/5	OBJECT		1.0

OB 1164936 | 02:11:21 > 02:12:43 | 00:01:22 | Mode: Commissioning | Loss: No Loss | Status A Grade X

Instrument SPHERE
Name PSF_Juno
Target 1252 HD80903
PI Christophe Dumas
Run 60.A-9379(A)
Container Concatenation 1164932
Public Comments Too low flux with the new filter. We increase DIT again.
13 Feb 02:12

Files produced and additional information

OBS.ID 1164936
OBS.START 2015-02-13T02:11:21
Template SPHERE_irdis_ci_obs

Original Filename	Archive Filename	TPL.EXPNO/NEXP	DPR.TYPE	INS.FILT1.NAME	EXPTIME
SPHERE_IRDIS_OBS044_0049.fits	SPHER.2015-02-13T02:11:56.331	1/5	OBJECT		1.0
SPHERE_IRDIS_OBS044_0050.fits	SPHER.2015-02-13T02:12:19.664	2/5	OBJECT		1.0

OB 1164936 | 02:13:00 > 02:16:13 | 00:03:13 | Mode: Commissioning | Loss: No Loss | Status X > C Grade A

Instrument SPHERE
Name PSF_Juno
Target 1252 HD80903
PI Christophe Dumas
Run 60.A-9379(A)
Container Concatenation 1164932

Public Comments

Files produced and additional information

OBS.ID 1164936
OBS.START 2015-02-13T02:13:00

Template SPHERE_irdis_ci_obs

Original Filename	Archive Filename	TPL.EXPNO/NEXP	DPR.TYPE	INS.FILT1.NAME	EXPTIME
SPHERE_IRDIS_OBS044_0051.fits	SPHER.2015-02-13T02:13:14.759	1/5	OBJECT		2.0
SPHERE_IRDIS_OBS044_0052.fits	SPHER.2015-02-13T02:13:46.793	2/5	OBJECT		2.0
SPHERE_IRDIS_OBS044_0053.fits	SPHER.2015-02-13T02:14:19.099	3/5	OBJECT		2.0
SPHERE_IRDIS_OBS044_0054.fits	SPHER.2015-02-13T02:14:52.577	4/5	OBJECT		2.0
SPHERE_IRDIS_SKY044_0005.fits	SPHER.2015-02-13T02:15:43.060	5/5	SKY		2.0

OB 1178551 | 02:16:50 > 02:32:00 | 00:15:10 | Mode: Commissioning | Loss: No Loss | Status A Grade X

Instrument SPHERE
Name MOV_IFS_GANYMEDE_2
Target Ganymede
PI Leigh Fletcher
Run 60.A-9372(A)
Container Concatenation 1178550
Public Comments Ganymede is undergoing an eclipse, as mentioned in fact in the readme. We abort the exposure.
13 Feb 02:32

Files produced and additional information

No files produced

OB 1178544 | 02:33:18 > 02:50:18 | 00:17:00 | Mode: Commissioning | Loss: No Loss | Status A Grade X

Instrument SPHERE
Name MOV_IFS_CALLISTO
Target Callisto
PI Leigh Fletcher
Run 60.A-9372(A)
Container Concatenation 1178543
Public Comments Could not properly close the high order loop even without using any filter stop.
13 Feb 02:52

Files produced and additional information

No files produced

OB 1158224 | 02:55:20 > 03:02:18 | 00:06:58 | Mode: Commissioning | Loss: No Loss | Status A Grade _

Instrument SPHERE
Name HD 90520
Target HD 90520
PI Blake M. Pantoja
Run 60.A-9385(A)
Container -
Public Comments Coronagraph centering does not look correct, we repeat the OB setting the centering to True in the acq.
13 Feb 03:04 - Paranal Observatory

Files produced and additional information

No files produced

OB 1158224 | 03:02:43 > 03:13:09 | 00:10:26 | Mode: Commissioning | Loss: No Loss | Status A Grade X

Instrument SPHERE
Name HD 90520
Target HD 90520
PI Blake M. Pantoja
Run 60.A-9385(A)

Container -

Public Comments Forgot to switch to pupil mode in the science template.
13 Feb 03:13

Files produced and additional information

OBS.ID 1158224
OBS.START 2015-02-13T03:02:43
Template SPHERE_irdifs_acq

Original Filename	Archive Filename	TPL.EXPNO/NEXP	DPR.TYPE	INS.FILT1.NAME	EXPTIME
SPHERE_IRDIFS_IRDIS_CAL_DARK044_0001.fits	SPHER.2015-02-13T03:04:24.771	1/9	DARK		1.0
SPHERE_IRDIFS_IRDIS_ACQ044_0001.fits	SPHER.2015-02-13T03:05:06.880	2/9	OBJECT		1.0
SPHERE_IRDIFS_IRDIS_CAL_FLAT044_0001.fits	SPHER.2015-02-13T03:05:42.247	3/9	FLAT,LAMP		1.0
SPHERE_IRDIFS_IRDIS_CAL_DARK044_0002.fits	SPHER.2015-02-13T03:06:02.628	4/9	DARK		1.0
SPHERE_IRDIFS_IRDIS_ACQ044_0002.fits	SPHER.2015-02-13T03:06:43.971	5/9	OBJECT		1.0
SPHERE_IRDIFS_IRDIS_ACQ044_0003.fits	SPHER.2015-02-13T03:07:06.337	6/10	OBJECT		1.0
SPHERE_IRDIFS_IRDIS_ACQ044_0004.fits	SPHER.2015-02-13T03:07:27.558	7/11	OBJECT		1.0
SPHERE_IRDIFS_IRDIS_ACQ044_0005.fits	SPHER.2015-02-13T03:07:49.321	8/12	OBJECT		1.0

OB 1158224 | 03:14:08 > 04:03:54 | 00:49:46 | Mode: Commissioning | Loss: No Loss | Status X > C Grade A

Instrument SPHERE
Name HD 90520
Target HD 90520
PI Blake M. Pantoja
Run 60.A-9385(A)
Container -
Public Comments Switched to pupil mode and readjusted exp time. The loop was stable and seeing was within constraints.
13 Feb 04:10

Files produced and additional information

OBS.ID 1158224
OBS.START 2015-02-13T03:14:08
Template SPHERE_irdifs_obs

Original Filename	Archive Filename	TPL.EXPNO/NEXP	DPR.TYPE	INS.FILT1.NAME	EXPTIME
SPHERE_IRDIFS_IFS_OBS044_0001.fits	SPHER.2015-02-13T03:14:32.929	1/44	OBJECT,CENTER		32.0
SPHERE_IRDIFS_IRDIS_OBS044_0001.fits	SPHER.2015-02-13T03:14:33.639	2/44	OBJECT,CENTER		16.0
SPHERE_IRDIFS_IFS_OBS044_0002.fits	SPHER.2015-02-13T03:15:43.097	3/44	OBJECT,FLUX		32.0
SPHERE_IRDIFS_IRDIS_OBS044_0002.fits	SPHER.2015-02-13T03:15:43.883	4/44	OBJECT,FLUX		16.0
SPHERE_IRDIFS_IFS_OBS044_0003.fits	SPHER.2015-02-13T03:16:41.398	5/44	OBJECT		32.0
SPHERE_IRDIFS_IRDIS_OBS044_0003.fits	SPHER.2015-02-13T03:16:42.295	6/44	OBJECT		16.0
SPHERE_IRDIFS_IFS_OBS044_0004.fits	SPHER.2015-02-13T03:19:03.545	7/44	OBJECT		32.0
SPHERE_IRDIFS_IRDIS_OBS044_0004.fits	SPHER.2015-02-13T03:19:04.358	8/44	OBJECT		16.0
SPHERE_IRDIFS_IFS_OBS044_0005.fits	SPHER.2015-02-13T03:21:25.439	9/44	OBJECT		32.0
SPHERE_IRDIFS_IRDIS_OBS044_0005.fits	SPHER.2015-02-13T03:21:26.316	10/44	OBJECT		16.0
SPHERE_IRDIFS_IFS_OBS044_0006.fits	SPHER.2015-02-13T03:23:47.338	11/44	OBJECT		32.0
SPHERE_IRDIFS_IRDIS_OBS044_0006.fits	SPHER.2015-02-13T03:23:48.160	12/44	OBJECT		16.0
SPHERE_IRDIFS_IFS_OBS044_0007.fits	SPHER.2015-02-13T03:26:09.192	13/44	OBJECT		32.0
SPHERE_IRDIFS_IRDIS_OBS044_0007.fits	SPHER.2015-02-13T03:26:10.664	14/44	OBJECT		16.0
SPHERE_IRDIFS_IFS_OBS044_0008.fits	SPHER.2015-02-13T03:28:31.101	15/44	OBJECT		32.0
SPHERE_IRDIFS_IRDIS_OBS044_0008.fits	SPHER.2015-02-13T03:28:31.917	16/44	OBJECT		16.0
SPHERE_IRDIFS_IFS_OBS044_0009.fits	SPHER.2015-02-13T03:30:52.114	17/44	OBJECT		32.0
SPHERE_IRDIFS_IRDIS_OBS044_0009.fits	SPHER.2015-02-13T03:30:52.939	18/44	OBJECT		16.0
SPHERE_IRDIFS_IFS_OBS044_0010.fits	SPHER.2015-02-13T03:33:13.899	19/44	OBJECT		32.0
SPHERE_IRDIFS_IRDIS_OBS044_0010.fits	SPHER.2015-02-13T03:33:14.787	20/44	OBJECT		16.0
SPHERE_IRDIFS_IFS_OBS044_0011.fits	SPHER.2015-02-13T03:35:33.913	21/44	OBJECT		32.0
SPHERE_IRDIFS_IRDIS_OBS044_0011.fits	SPHER.2015-02-13T03:35:36.288	22/44	OBJECT		16.0
SPHERE_IRDIFS_IFS_OBS044_0012.fits	SPHER.2015-02-13T03:37:56.828	23/44	OBJECT		32.0
SPHERE_IRDIFS_IRDIS_OBS044_0012.fits	SPHER.2015-02-13T03:37:58.524	24/44	OBJECT		16.0
SPHERE_IRDIFS_IFS_OBS044_0013.fits	SPHER.2015-02-13T03:40:16.785	25/44	OBJECT		32.0
SPHERE_IRDIFS_IRDIS_OBS044_0013.fits	SPHER.2015-02-13T03:40:18.474	26/44	OBJECT		16.0
SPHERE_IRDIFS_IFS_OBS044_0014.fits	SPHER.2015-02-13T03:42:37.900	27/44	OBJECT		32.0
SPHERE_IRDIFS_IRDIS_OBS044_0014.fits	SPHER.2015-02-13T03:42:39.648	28/44	OBJECT		16.0
SPHERE_IRDIFS_IFS_OBS044_0015.fits	SPHER.2015-02-13T03:44:58.536	29/44	OBJECT		32.0
SPHERE_IRDIFS_IRDIS_OBS044_0015.fits	SPHER.2015-02-13T03:45:00.277	30/44	OBJECT		16.0
SPHERE_IRDIFS_IFS_OBS044_0016.fits	SPHER.2015-02-13T03:47:19.185	31/44	OBJECT		32.0
SPHERE_IRDIFS_IRDIS_OBS044_0016.fits	SPHER.2015-02-13T03:47:21.448	32/44	OBJECT		16.0

SPHERE_IRDIFS_IFS_OBS044_0017.fits	SPHER.2015-02-13T03:49:41.384	33/44	OBJECT	32.0
SPHERE_IRDIFS_IRDIS_OBS044_0017.fits	SPHER.2015-02-13T03:49:42.809	34/44	OBJECT	16.0
SPHERE_IRDIFS_IFS_OBS044_0018.fits	SPHER.2015-02-13T03:52:03.346	35/44	OBJECT	32.0
SPHERE_IRDIFS_IRDIS_OBS044_0018.fits	SPHER.2015-02-13T03:52:04.191	36/44	OBJECT	16.0
SPHERE_IRDIFS_IFS_OBS044_0019.fits	SPHER.2015-02-13T03:54:25.218	37/44	OBJECT	32.0
SPHERE_IRDIFS_IRDIS_OBS044_0019.fits	SPHER.2015-02-13T03:54:26.215	38/44	OBJECT	16.0
SPHERE_IRDIFS_IFS_OBS044_0020.fits	SPHER.2015-02-13T03:56:47.110	39/44	OBJECT	32.0
SPHERE_IRDIFS_IRDIS_OBS044_0020.fits	SPHER.2015-02-13T03:56:47.970	40/44	OBJECT	16.0
SPHERE_IRDIFS_IFS_OBS044_0021.fits	SPHER.2015-02-13T03:59:09.010	41/44	OBJECT	32.0
SPHERE_IRDIFS_IRDIS_OBS044_0021.fits	SPHER.2015-02-13T03:59:09.911	42/44	OBJECT	16.0
SPHERE_IRDIFS_IFS_OBS044_0022.fits	SPHER.2015-02-13T04:01:29.998	43/44	OBJECT	32.0
SPHERE_IRDIFS_IRDIS_OBS044_0022.fits	SPHER.2015-02-13T04:01:31.386	44/44	OBJECT	16.0

OB 1103463 | 04:11:59 > 05:32:46 | 01:20:47 | Mode: Service | Loss: No Loss | Status X > C

Grade A

Instrument VIMOS
Name MOS_P4-mask2
Target Pointing4-mask2
PI Stephanie Juneau
Run 093.A-0910(B)
Container -
Public Comments Seeing of 0.7"-0.8" on the spectra. Attached calibrations ok.
13 Feb 05:32

Files produced and additional information

OBS.ID 1103463
OBS.START 2015-02-13T04:11:59
Template VIMOS_mos_acq_Mask
Data Product CALIB/LAMP,AFC/IMAGE
CCD 225kHz,1port,HG,AFC/1x1/2048x400
Lamps Afc

Original Filename	Archive Filename	Grism	Filter	INS.ADF.ID	DET.OUT1.CONAD	EXPTIME
VIMOS_IMG_AFC044_0001_B.1.fits	VIMOS.2015-02-13T04:17:35.920	Free	R	0.53 e-/adu	1.996	
VIMOS_IMG_AFC044_0001_B.4.fits	VIMOS.2015-02-13T04:17:35.921	Free	R	0.54 e-/adu	1.996	
VIMOS_IMG_AFC044_0001_A.3.fits	VIMOS.2015-02-13T04:17:35.922	Free	R	0.56 e-/adu	1.999	
VIMOS_IMG_AFC044_0001_A.2.fits	VIMOS.2015-02-13T04:17:35.923	Free	R	0.55 e-/adu	1.999	
VIMOS_IMG_AFC044_0002_B.4.fits	VIMOS.2015-02-13T04:18:06.073	Free	R	0.54 e-/adu	1.996	
VIMOS_IMG_AFC044_0002_B.1.fits	VIMOS.2015-02-13T04:18:06.074	Free	R	0.53 e-/adu	1.996	
VIMOS_IMG_AFC044_0002_A.2.fits	VIMOS.2015-02-13T04:18:06.077	Free	R	0.55 e-/adu	2.003	
VIMOS_IMG_AFC044_0002_A.3.fits	VIMOS.2015-02-13T04:18:06.076	Free	R	0.56 e-/adu	2.003	
VIMOS_IMG_AFC044_0003_A.2.fits	VIMOS.2015-02-13T04:18:34.071	Free	R	0.55 e-/adu	1.999	
VIMOS_IMG_AFC044_0003_A.3.fits	VIMOS.2015-02-13T04:18:34.070	Free	R	0.56 e-/adu	1.999	
VIMOS_IMG_AFC044_0003_B.1.fits	VIMOS.2015-02-13T04:18:34.088	Free	R	0.53 e-/adu	1.996	
VIMOS_IMG_AFC044_0003_B.4.fits	VIMOS.2015-02-13T04:18:34.087	Free	R	0.54 e-/adu	1.996	

Template VIMOS_mos_acq_Mask
Data Product ACQUISITION/SLIT,OBJECT/IMAGE
CCD 225kHz,1port,LG/1x1/2048x2440

Original Filename	Archive Filename	Grism	Filter	INS.ADF.ID	DET.OUT1.CONAD	EXPTIME
VIMOS_MOS_SLIT044_0001_A.2.fits	VIMOS.2015-02-13T04:18:56.352	Free	R	P4bQ2_final_vm_MR_M1Q2.adp	1.81 e-/adu	30.0
VIMOS_MOS_SLIT044_0001_A.3.fits	VIMOS.2015-02-13T04:18:56.353	Free	R	P4bQ3_final_vm_MR_M1Q3.adp	1.81 e-/adu	30.0
VIMOS_MOS_SLIT044_0001_B.4.fits	VIMOS.2015-02-13T04:18:56.360	Free	R	P4bQ4_final_vm_MR_M1Q4.adp	1.79 e-/adu	29.994
VIMOS_MOS_SLIT044_0001_B.1.fits	VIMOS.2015-02-13T04:18:56.359	Free	R	P4bQ1_final_vm_MR_M1Q1.adp	1.75 e-/adu	29.994
VIMOS_MOS_SLIT044_0002_B.1.fits	VIMOS.2015-02-13T04:21:49.629	Free	R	P4bQ1_final_vm_MR_M1Q1.adp	1.75 e-/adu	14.995
VIMOS_MOS_SLIT044_0002_B.4.fits	VIMOS.2015-02-13T04:21:49.630	Free	R	P4bQ4_final_vm_MR_M1Q4.adp	1.79 e-/adu	14.995
VIMOS_MOS_SLIT044_0002_A.3.fits	VIMOS.2015-02-13T04:21:49.634	Free	R	P4bQ3_final_vm_MR_M1Q3.adp	1.81 e-/adu	15.002
VIMOS_MOS_SLIT044_0002_A.2.fits	VIMOS.2015-02-13T04:21:49.633	Free	R	P4bQ2_final_vm_MR_M1Q2.adp	1.81 e-/adu	15.002
VIMOS_MOS_SLIT044_0003_A.3.fits	VIMOS.2015-02-13T04:24:48.265	Free	R	P4bQ3_final_vm_MR_M1Q3.adp	1.81 e-/adu	30.007
VIMOS_MOS_SLIT044_0003_A.2.fits	VIMOS.2015-02-13T04:24:48.266	Free	R	P4bQ2_final_vm_MR_M1Q2.adp	1.81 e-/adu	30.007
VIMOS_MOS_SLIT044_0003_B.1.fits	VIMOS.2015-02-13T04:24:48.272	Free	R	P4bQ1_final_vm_MR_M1Q1.adp	1.75 e-/adu	29.995
VIMOS_MOS_SLIT044_0003_B.4.fits	VIMOS.2015-02-13T04:24:48.271	Free	R	P4bQ4_final_vm_MR_M1Q4.adp	1.79 e-/adu	29.995
VIMOS_MOS_SLIT044_0004_A.2.fits	VIMOS.2015-02-13T04:29:30.171	Free	R	P4bQ2_final_vm_MR_M1Q2.adp	1.81 e-/adu	30.001
VIMOS_MOS_SLIT044_0004_A.3.fits	VIMOS.2015-02-13T04:29:30.170	Free	R	P4bQ3_final_vm_MR_M1Q3.adp	1.81 e-/adu	30.001
VIMOS_MOS_SLIT044_0004_B.1.fits	VIMOS.2015-02-13T04:29:30.173	Free	R	P4bQ1_final_vm_MR_M1Q1.adp	1.75 e-/adu	29.995
VIMOS_MOS_SLIT044_0004_B.4.fits	VIMOS.2015-02-13T04:29:30.174	Free	R	P4bQ4_final_vm_MR_M1Q4.adp	1.79 e-/adu	29.995

Template VIMOS_mos_obs_Offset
Data Product SCIENCE/OBJECT/MOS

CCD 225kHz, 1port, HG/1x1/2048x4096
Airmass 1.153
DIMM 1.29

Original Filename	Archive Filename	Grism	Filter	INS.ADF.ID	DET.OUT1.CONAD	EXPTIME
VIMOS_MOS_OBS044_0001_A.2.fits	VIMOS.2015-02-13T04:36:27.161	MR	GG475	P4bQ2_final_vm_MR_M1Q2.adp	0.6 e-/adu	525.001
VIMOS_MOS_OBS044_0001_A.3.fits	VIMOS.2015-02-13T04:36:27.160	MR	GG475	P4bQ3_final_vm_MR_M1Q3.adp	0.56 e-/adu	525.001
VIMOS_MOS_OBS044_0001_B.1.fits	VIMOS.2015-02-13T04:36:27.163	MR	GG475	P4bQ1_final_vm_MR_M1Q1.adp	0.55 e-/adu	524.995
VIMOS_MOS_OBS044_0001_B.4.fits	VIMOS.2015-02-13T04:36:27.162	MR	GG475	P4bQ4_final_vm_MR_M1Q4.adp	0.57 e-/adu	524.995
VIMOS_MOS_OBS044_0002_B.1.fits	VIMOS.2015-02-13T04:46:17.900	MR	GG475	P4bQ1_final_vm_MR_M1Q1.adp	0.55 e-/adu	524.994
VIMOS_MOS_OBS044_0002_B.4.fits	VIMOS.2015-02-13T04:46:17.901	MR	GG475	P4bQ4_final_vm_MR_M1Q4.adp	0.57 e-/adu	524.994
VIMOS_MOS_OBS044_0002_A.3.fits	VIMOS.2015-02-13T04:46:17.904	MR	GG475	P4bQ3_final_vm_MR_M1Q3.adp	0.56 e-/adu	525.001
VIMOS_MOS_OBS044_0002_A.2.fits	VIMOS.2015-02-13T04:46:17.903	MR	GG475	P4bQ2_final_vm_MR_M1Q2.adp	0.6 e-/adu	525.001
VIMOS_MOS_OBS044_0003_A.3.fits	VIMOS.2015-02-13T04:56:08.805	MR	GG475	P4bQ3_final_vm_MR_M1Q3.adp	0.56 e-/adu	524.998
VIMOS_MOS_OBS044_0003_A.2.fits	VIMOS.2015-02-13T04:56:08.806	MR	GG475	P4bQ2_final_vm_MR_M1Q2.adp	0.6 e-/adu	524.998
VIMOS_MOS_OBS044_0003_B.1.fits	VIMOS.2015-02-13T04:56:08.810	MR	GG475	P4bQ1_final_vm_MR_M1Q1.adp	0.55 e-/adu	524.995
VIMOS_MOS_OBS044_0003_B.4.fits	VIMOS.2015-02-13T04:56:08.809	MR	GG475	P4bQ4_final_vm_MR_M1Q4.adp	0.57 e-/adu	524.995
VIMOS_MOS_OBS044_0004_A.3.fits	VIMOS.2015-02-13T05:05:59.770	MR	GG475	P4bQ3_final_vm_MR_M1Q3.adp	0.56 e-/adu	525.0
VIMOS_MOS_OBS044_0004_A.2.fits	VIMOS.2015-02-13T05:05:59.767	MR	GG475	P4bQ2_final_vm_MR_M1Q2.adp	0.6 e-/adu	525.0
VIMOS_MOS_OBS044_0004_B.1.fits	VIMOS.2015-02-13T05:05:59.768	MR	GG475	P4bQ1_final_vm_MR_M1Q1.adp	0.55 e-/adu	524.994
VIMOS_MOS_OBS044_0004_B.4.fits	VIMOS.2015-02-13T05:05:59.769	MR	GG475	P4bQ4_final_vm_MR_M1Q4.adp	0.57 e-/adu	524.994
VIMOS_MOS_OBS044_0005_A.2.fits	VIMOS.2015-02-13T05:15:49.848	MR	GG475	P4bQ2_final_vm_MR_M1Q2.adp	0.6 e-/adu	525.0
VIMOS_MOS_OBS044_0005_A.3.fits	VIMOS.2015-02-13T05:15:49.849	MR	GG475	P4bQ3_final_vm_MR_M1Q3.adp	0.56 e-/adu	525.0
VIMOS_MOS_OBS044_0005_B.1.fits	VIMOS.2015-02-13T05:15:49.856	MR	GG475	P4bQ1_final_vm_MR_M1Q1.adp	0.55 e-/adu	524.993
VIMOS_MOS_OBS044_0005_B.4.fits	VIMOS.2015-02-13T05:15:49.855	MR	GG475	P4bQ4_final_vm_MR_M1Q4.adp	0.57 e-/adu	524.993

Template VIMOS_mos_cal_NightCalib

Data Product CALIB/FLAT,LAMP/MOS

CCD 225kHz, 1port, HG/1x1/2048x4096

Lamps QTH10

Original Filename	Archive Filename	Grism	Filter	INS.ADF.ID	DET.OUT1.CONAD	EXPTIME
VIMOS_MOS_LAMP044_0001_A.3.fits	VIMOS.2015-02-13T05:27:22.295	MR	GG475	P4bQ3_final_vm_MR_M1Q3.adp	0.56 e-/adu	11.998
VIMOS_MOS_LAMP044_0001_A.2.fits	VIMOS.2015-02-13T05:27:22.294	MR	GG475	P4bQ2_final_vm_MR_M1Q2.adp	0.6 e-/adu	11.998
VIMOS_MOS_LAMP044_0001_B.4.fits	VIMOS.2015-02-13T05:27:22.297	MR	GG475	P4bQ4_final_vm_MR_M1Q4.adp	0.57 e-/adu	11.993
VIMOS_MOS_LAMP044_0001_B.1.fits	VIMOS.2015-02-13T05:27:22.296	MR	GG475	P4bQ1_final_vm_MR_M1Q1.adp	0.55 e-/adu	11.993
VIMOS_MOS_LAMP044_0002_A.3.fits	VIMOS.2015-02-13T05:28:33.952	MR	GG475	P4bQ3_final_vm_MR_M1Q3.adp	0.56 e-/adu	11.996
VIMOS_MOS_LAMP044_0002_A.2.fits	VIMOS.2015-02-13T05:28:33.953	MR	GG475	P4bQ2_final_vm_MR_M1Q2.adp	0.6 e-/adu	11.996
VIMOS_MOS_LAMP044_0002_B.1.fits	VIMOS.2015-02-13T05:28:33.955	MR	GG475	P4bQ1_final_vm_MR_M1Q1.adp	0.55 e-/adu	11.994
VIMOS_MOS_LAMP044_0002_B.4.fits	VIMOS.2015-02-13T05:28:33.956	MR	GG475	P4bQ4_final_vm_MR_M1Q4.adp	0.57 e-/adu	11.994
VIMOS_MOS_LAMP044_0003_A.2.fits	VIMOS.2015-02-13T05:29:44.931	MR	GG475	P4bQ2_final_vm_MR_M1Q2.adp	0.6 e-/adu	11.998
VIMOS_MOS_LAMP044_0003_A.3.fits	VIMOS.2015-02-13T05:29:44.930	MR	GG475	P4bQ3_final_vm_MR_M1Q3.adp	0.56 e-/adu	11.998
VIMOS_MOS_LAMP044_0003_B.4.fits	VIMOS.2015-02-13T05:29:44.934	MR	GG475	P4bQ4_final_vm_MR_M1Q4.adp	0.57 e-/adu	11.993
VIMOS_MOS_LAMP044_0003_B.1.fits	VIMOS.2015-02-13T05:29:44.933	MR	GG475	P4bQ1_final_vm_MR_M1Q1.adp	0.55 e-/adu	11.993

Template VIMOS_mos_cal_NightCalib

Data Product CALIB/WAVE,LAMP/MOS

CCD 225kHz, 1port, HG/1x1/2048x4096

Lamps He / Ar

Original Filename	Archive Filename	Grism	Filter	INS.ADF.ID	DET.OUT1.CONAD	EXPTIME
VIMOS_MOS_WAVE044_0001_A.3.fits	VIMOS.2015-02-13T05:30:52.299	MR	GG475	P4bQ3_final_vm_MR_M1Q3.adp	0.56 e-/adu	9.989
VIMOS_MOS_WAVE044_0001_A.2.fits	VIMOS.2015-02-13T05:30:52.300	MR	GG475	P4bQ2_final_vm_MR_M1Q2.adp	0.6 e-/adu	9.989
VIMOS_MOS_WAVE044_0001_B.1.fits	VIMOS.2015-02-13T05:30:52.302	MR	GG475	P4bQ1_final_vm_MR_M1Q1.adp	0.55 e-/adu	9.979
VIMOS_MOS_WAVE044_0001_B.4.fits	VIMOS.2015-02-13T05:30:52.301	MR	GG475	P4bQ4_final_vm_MR_M1Q4.adp	0.57 e-/adu	9.979

OB 1103475 | 05:32:56 > 06:44:28 | 01:11:32 | Mode: Service | Loss: No Loss | Status X > C

Grade A

Instrument VIMOS

Name MOS_P4-mask2_3

Target Pointing4-mask2

PI Stephanie Juneau

Run 093.A-0910(B)

Container -

Public Comments Guideprobe seeing ~0.8"
13 Feb 06:44

Files produced and additional information

OBS.ID 1103475

OBS.START 2015-02-13T05:32:56

Template VIMOS_mos_acq_Mask

Data Product CALIB/LAMP,AFC/IMAGE

CCD 225kHz,1port,HG,AFC/1x1/2048x400

Lamps Afc

Original Filename	Archive Filename	Grism	Filter	INS.ADF.ID	DET.OUT1.CONAD	EXPTIME
VIMOS_IMG_AFC044_0004_B.1.fits	VIMOS.2015-02-13T05:37:16.066	Free	R	P4bQ1_final_vm_MR_M1Q1.adp	0.53 e-/adu	1.993
VIMOS_IMG_AFC044_0004_B.4.fits	VIMOS.2015-02-13T05:37:16.065	Free	R	P4bQ4_final_vm_MR_M1Q4.adp	0.54 e-/adu	1.993
VIMOS_IMG_AFC044_0004_A.2.fits	VIMOS.2015-02-13T05:37:16.068	Free	R	P4bQ2_final_vm_MR_M1Q2.adp	0.55 e-/adu	1.997
VIMOS_IMG_AFC044_0004_A.3.fits	VIMOS.2015-02-13T05:37:16.067	Free	R	P4bQ3_final_vm_MR_M1Q3.adp	0.56 e-/adu	1.997
VIMOS_IMG_AFC044_0005_B.1.fits	VIMOS.2015-02-13T05:37:46.078	Free	R	P4bQ1_final_vm_MR_M1Q1.adp	0.53 e-/adu	1.993
VIMOS_IMG_AFC044_0005_B.4.fits	VIMOS.2015-02-13T05:37:46.079	Free	R	P4bQ4_final_vm_MR_M1Q4.adp	0.54 e-/adu	1.993
VIMOS_IMG_AFC044_0005_A.3.fits	VIMOS.2015-02-13T05:37:46.080	Free	R	P4bQ3_final_vm_MR_M1Q3.adp	0.56 e-/adu	1.998
VIMOS_IMG_AFC044_0005_A.2.fits	VIMOS.2015-02-13T05:37:46.081	Free	R	P4bQ2_final_vm_MR_M1Q2.adp	0.55 e-/adu	1.998
VIMOS_IMG_AFC044_0006_B.1.fits	VIMOS.2015-02-13T05:38:14.072	Free	R	P4bQ1_final_vm_MR_M1Q1.adp	0.53 e-/adu	1.993
VIMOS_IMG_AFC044_0006_B.4.fits	VIMOS.2015-02-13T05:38:14.073	Free	R	P4bQ4_final_vm_MR_M1Q4.adp	0.54 e-/adu	1.993
VIMOS_IMG_AFC044_0006_A.2.fits	VIMOS.2015-02-13T05:38:14.074	Free	R	P4bQ2_final_vm_MR_M1Q2.adp	0.55 e-/adu	1.999
VIMOS_IMG_AFC044_0006_A.3.fits	VIMOS.2015-02-13T05:38:14.075	Free	R	P4bQ3_final_vm_MR_M1Q3.adp	0.56 e-/adu	1.999

Template VIMOS_mos_acq_Mask

Data Product ACQUISITION/SLIT,OBJECT/IMAGE

CCD 225kHz,1port,LG/1x1/2048x2440

Original Filename	Archive Filename	Grism	Filter	INS.ADF.ID	DET.OUT1.CONAD	EXPTIME
VIMOS_MOS_SLIT044_0005_B.1.fits	VIMOS.2015-02-13T05:38:36.125	Free	R	P4bQ1_final_vm_MR_M1Q1.adp	1.75 e-/adu	29.993
VIMOS_MOS_SLIT044_0005_B.4.fits	VIMOS.2015-02-13T05:38:36.126	Free	R	P4bQ4_final_vm_MR_M1Q4.adp	1.79 e-/adu	29.993
VIMOS_MOS_SLIT044_0005_A.3.fits	VIMOS.2015-02-13T05:38:36.128	Free	R	P4bQ3_final_vm_MR_M1Q3.adp	1.81 e-/adu	29.997
VIMOS_MOS_SLIT044_0005_A.2.fits	VIMOS.2015-02-13T05:38:36.127	Free	R	P4bQ2_final_vm_MR_M1Q2.adp	1.81 e-/adu	29.997
VIMOS_MOS_SLIT044_0006_A.2.fits	VIMOS.2015-02-13T05:40:26.689	Free	R	P4bQ2_final_vm_MR_M1Q2.adp	1.81 e-/adu	9.998
VIMOS_MOS_SLIT044_0006_A.3.fits	VIMOS.2015-02-13T05:40:26.690	Free	R	P4bQ3_final_vm_MR_M1Q3.adp	1.81 e-/adu	9.998
VIMOS_MOS_SLIT044_0006_B.4.fits	VIMOS.2015-02-13T05:40:26.698	Free	R	P4bQ4_final_vm_MR_M1Q4.adp	1.79 e-/adu	9.993
VIMOS_MOS_SLIT044_0006_B.1.fits	VIMOS.2015-02-13T05:40:26.699	Free	R	P4bQ1_final_vm_MR_M1Q1.adp	1.75 e-/adu	9.993
VIMOS_MOS_SLIT044_0007_B.4.fits	VIMOS.2015-02-13T05:42:40.913	Free	R	P4bQ4_final_vm_MR_M1Q4.adp	1.79 e-/adu	29.993
VIMOS_MOS_SLIT044_0007_B.1.fits	VIMOS.2015-02-13T05:42:40.914	Free	R	P4bQ1_final_vm_MR_M1Q1.adp	1.75 e-/adu	29.993
VIMOS_MOS_SLIT044_0007_A.2.fits	VIMOS.2015-02-13T05:42:40.917	Free	R	P4bQ2_final_vm_MR_M1Q2.adp	1.81 e-/adu	29.996
VIMOS_MOS_SLIT044_0007_A.3.fits	VIMOS.2015-02-13T05:42:40.916	Free	R	P4bQ3_final_vm_MR_M1Q3.adp	1.81 e-/adu	29.996

Template VIMOS_mos_obs_Offset

Data Product SCIENCE/OBJECT/MOS

CCD 225kHz,1port,HG/1x1/2048x4096

Airmass 1.128

DIMM 1.51

Original Filename	Archive Filename	Grism	Filter	INS.ADF.ID	DET.OUT1.CONAD	EXPTIME
VIMOS_MOS_OBS044_0006_A.3.fits	VIMOS.2015-02-13T05:47:57.045	MR	GG475	P4bQ3_final_vm_MR_M1Q3.adp	0.56 e-/adu	524.997
VIMOS_MOS_OBS044_0006_A.2.fits	VIMOS.2015-02-13T05:47:57.044	MR	GG475	P4bQ2_final_vm_MR_M1Q2.adp	0.6 e-/adu	524.997
VIMOS_MOS_OBS044_0006_B.1.fits	VIMOS.2015-02-13T05:47:57.050	MR	GG475	P4bQ1_final_vm_MR_M1Q1.adp	0.55 e-/adu	524.993
VIMOS_MOS_OBS044_0006_B.4.fits	VIMOS.2015-02-13T05:47:57.051	MR	GG475	P4bQ4_final_vm_MR_M1Q4.adp	0.57 e-/adu	524.993
VIMOS_MOS_OBS044_0007_A.3.fits	VIMOS.2015-02-13T05:57:45.726	MR	GG475	P4bQ3_final_vm_MR_M1Q3.adp	0.56 e-/adu	524.999
VIMOS_MOS_OBS044_0007_A.2.fits	VIMOS.2015-02-13T05:57:45.727	MR	GG475	P4bQ2_final_vm_MR_M1Q2.adp	0.6 e-/adu	524.999
VIMOS_MOS_OBS044_0007_B.1.fits	VIMOS.2015-02-13T05:57:45.729	MR	GG475	P4bQ1_final_vm_MR_M1Q1.adp	0.55 e-/adu	524.992
VIMOS_MOS_OBS044_0007_B.4.fits	VIMOS.2015-02-13T05:57:45.728	MR	GG475	P4bQ4_final_vm_MR_M1Q4.adp	0.57 e-/adu	524.992
VIMOS_MOS_OBS044_0008_A.2.fits	VIMOS.2015-02-13T06:07:35.088	MR	GG475	P4bQ2_final_vm_MR_M1Q2.adp	0.6 e-/adu	524.996
VIMOS_MOS_OBS044_0008_A.3.fits	VIMOS.2015-02-13T06:07:35.089	MR	GG475	P4bQ3_final_vm_MR_M1Q3.adp	0.56 e-/adu	524.996
VIMOS_MOS_OBS044_0008_B.1.fits	VIMOS.2015-02-13T06:07:35.097	MR	GG475	P4bQ1_final_vm_MR_M1Q1.adp	0.55 e-/adu	524.992
VIMOS_MOS_OBS044_0008_B.4.fits	VIMOS.2015-02-13T06:07:35.096	MR	GG475	P4bQ4_final_vm_MR_M1Q4.adp	0.57 e-/adu	524.992
VIMOS_MOS_OBS044_0009_A.3.fits	VIMOS.2015-02-13T06:17:25.940	MR	GG475	P4bQ3_final_vm_MR_M1Q3.adp	0.56 e-/adu	524.996
VIMOS_MOS_OBS044_0009_A.2.fits	VIMOS.2015-02-13T06:17:25.941	MR	GG475	P4bQ2_final_vm_MR_M1Q2.adp	0.6 e-/adu	524.996
VIMOS_MOS_OBS044_0009_B.1.fits	VIMOS.2015-02-13T06:17:25.946	MR	GG475	P4bQ1_final_vm_MR_M1Q1.adp	0.55 e-/adu	524.993
VIMOS_MOS_OBS044_0009_B.4.fits	VIMOS.2015-02-13T06:17:25.945	MR	GG475	P4bQ4_final_vm_MR_M1Q4.adp	0.57 e-/adu	524.993
VIMOS_MOS_OBS044_0010_A.3.fits	VIMOS.2015-02-13T06:27:15.092	MR	GG475	P4bQ3_final_vm_MR_M1Q3.adp	0.56 e-/adu	524.994
VIMOS_MOS_OBS044_0010_A.2.fits	VIMOS.2015-02-13T06:27:15.093	MR	GG475	P4bQ2_final_vm_MR_M1Q2.adp	0.6 e-/adu	524.994
VIMOS_MOS_OBS044_0010_B.4.fits	VIMOS.2015-02-13T06:27:15.095	MR	GG475	P4bQ4_final_vm_MR_M1Q4.adp	0.57 e-/adu	524.992
VIMOS_MOS_OBS044_0010_B.1.fits	VIMOS.2015-02-13T06:27:15.094	MR	GG475	P4bQ1_final_vm_MR_M1Q1.adp	0.55 e-/adu	524.992

Template VIMOS_mos_cal_NightCalib

Data Product CALIB/FLAT,LAMP/MOS

CCD 225kHz,1port,HG/1x1/2048x4096

Lamps QTH10

Original Filename	Archive Filename	Grism	Filter	INS.ADF.ID	DET.OUT1.CONAD	EXPTIME
VIMOS_MOS_LAMP044_0004_B.1.fits	VIMOS.2015-02-13T06:39:02.827	MR	GG475	P4bQ1_final_vm_MR_M1Q1.adp	0.55 e-/adu	11.992
VIMOS_MOS_LAMP044_0004_B.4.fits	VIMOS.2015-02-13T06:39:02.826	MR	GG475	P4bQ4_final_vm_MR_M1Q4.adp	0.57 e-/adu	11.992
VIMOS_MOS_LAMP044_0004_A.3.fits	VIMOS.2015-02-13T06:39:02.828	MR	GG475	P4bQ3_final_vm_MR_M1Q3.adp	0.56 e-/adu	11.995

VIMOS_MOS_LAMP044_0004_A.2.fits	VIMOS.2015-02-13T06:39:02.829	MR	GG475	P4bQ2_final_vm_MR_M1Q2.adp	0.6 e-/adu	11.995
VIMOS_MOS_LAMP044_0005_A.3.fits	VIMOS.2015-02-13T06:40:13.918	MR	GG475	P4bQ3_final_vm_MR_M1Q3.adp	0.56 e-/adu	11.996
VIMOS_MOS_LAMP044_0005_A.2.fits	VIMOS.2015-02-13T06:40:13.919	MR	GG475	P4bQ2_final_vm_MR_M1Q2.adp	0.6 e-/adu	11.996
VIMOS_MOS_LAMP044_0005_B.4.fits	VIMOS.2015-02-13T06:40:13.924	MR	GG475	P4bQ4_final_vm_MR_M1Q4.adp	0.57 e-/adu	11.992
VIMOS_MOS_LAMP044_0005_B.1.fits	VIMOS.2015-02-13T06:40:13.925	MR	GG475	P4bQ1_final_vm_MR_M1Q1.adp	0.55 e-/adu	11.992
VIMOS_MOS_LAMP044_0006_A.3.fits	VIMOS.2015-02-13T06:41:24.917	MR	GG475	P4bQ3_final_vm_MR_M1Q3.adp	0.56 e-/adu	11.994
VIMOS_MOS_LAMP044_0006_A.2.fits	VIMOS.2015-02-13T06:41:24.918	MR	GG475	P4bQ2_final_vm_MR_M1Q2.adp	0.6 e-/adu	11.994
VIMOS_MOS_LAMP044_0006_B.4.fits	VIMOS.2015-02-13T06:41:24.924	MR	GG475	P4bQ4_final_vm_MR_M1Q4.adp	0.57 e-/adu	11.992
VIMOS_MOS_LAMP044_0006_B.1.fits	VIMOS.2015-02-13T06:41:24.923	MR	GG475	P4bQ1_final_vm_MR_M1Q1.adp	0.55 e-/adu	11.992

Template VIMOS_mos_cal_NightCalib

Data Product CALIB/WAVE,LAMP/MOS

CCD 225kHz,1port,HG/1x1/2048x4096

Lamps He / Ar

Original Filename	Archive Filename	Grism	Filter	INS.ADF.ID	DET.OUT1.CONAD	EXPTIME
VIMOS_MOS_WAVE044_0002_B.4.fits	VIMOS.2015-02-13T06:42:32.272	MR	GG475	P4bQ4_final_vm_MR_M1Q4.adp	0.57 e-/adu	9.974
VIMOS_MOS_WAVE044_0002_B.1.fits	VIMOS.2015-02-13T06:42:32.271	MR	GG475	P4bQ1_final_vm_MR_M1Q1.adp	0.55 e-/adu	9.974
VIMOS_MOS_WAVE044_0002_A.2.fits	VIMOS.2015-02-13T06:42:32.275	MR	GG475	P4bQ2_final_vm_MR_M1Q2.adp	0.6 e-/adu	9.984
VIMOS_MOS_WAVE044_0002_A.3.fits	VIMOS.2015-02-13T06:42:32.274	MR	GG475	P4bQ3_final_vm_MR_M1Q3.adp	0.56 e-/adu	9.984

OB 968057 | 06:44:34 > 08:16:54 | 01:32:20 | Mode: Service | Loss: No Loss | Status X > M

Grade C

Instrument VIMOS

Name MOS_MR_VCC1110_N

Target VCC1110

PI T.H. Puzia

Run 090.B-0498(B)

Container Group 968056

Public Comments Seeing of 1" on the spectra. Data might be still partially useful.

13 Feb 08:16

Files produced and additional information

OBS.ID 968057

OBS.START 2015-02-13T06:44:34

Template VIMOS_mos_acq_Mask

Data Product CALIB/LAMP,AFC/IMAGE

CCD 225kHz,1port,HG,AFC/1x1/2048x400

Lamps Afc

Original Filename	Archive Filename	Grism	Filter	INS.ADF.ID	DET.OUT1.CONAD	EXPTIME
VIMOS_IMG_AFC044_0007_A.3.fits	VIMOS.2015-02-13T06:53:53.878	Free	R	VCC1110_NQ3_contributed_vm_MR_	0.56 e-/adu	1.996
VIMOS_IMG_AFC044_0007_A.2.fits	VIMOS.2015-02-13T06:53:53.881	Free	R	VCC1110_NQ2_contributed_vm_MR_	0.55 e-/adu	1.996
VIMOS_IMG_AFC044_0007_B.1.fits	VIMOS.2015-02-13T06:53:53.879	Free	R	VCC1110_NQ1_contributed_vm_MR_	0.53 e-/adu	1.995
VIMOS_IMG_AFC044_0007_B.4.fits	VIMOS.2015-02-13T06:53:53.880	Free	R	VCC1110_NQ4_contributed_vm_MR_	0.54 e-/adu	1.995
VIMOS_IMG_AFC044_0008_A.2.fits	VIMOS.2015-02-13T06:54:23.082	Free	R	VCC1110_NQ2_contributed_vm_MR_	0.55 e-/adu	1.999
VIMOS_IMG_AFC044_0008_A.3.fits	VIMOS.2015-02-13T06:54:23.081	Free	R	VCC1110_NQ3_contributed_vm_MR_	0.56 e-/adu	1.999
VIMOS_IMG_AFC044_0008_B.4.fits	VIMOS.2015-02-13T06:54:23.084	Free	R	VCC1110_NQ4_contributed_vm_MR_	0.54 e-/adu	1.994
VIMOS_IMG_AFC044_0008_B.1.fits	VIMOS.2015-02-13T06:54:23.083	Free	R	VCC1110_NQ1_contributed_vm_MR_	0.53 e-/adu	1.994
VIMOS_IMG_AFC044_0009_A.2.fits	VIMOS.2015-02-13T06:54:51.066	Free	R	VCC1110_NQ2_contributed_vm_MR_	0.55 e-/adu	2.0
VIMOS_IMG_AFC044_0009_A.3.fits	VIMOS.2015-02-13T06:54:51.065	Free	R	VCC1110_NQ3_contributed_vm_MR_	0.56 e-/adu	2.0
VIMOS_IMG_AFC044_0009_B.1.fits	VIMOS.2015-02-13T06:54:51.067	Free	R	VCC1110_NQ1_contributed_vm_MR_	0.53 e-/adu	1.994
VIMOS_IMG_AFC044_0009_B.4.fits	VIMOS.2015-02-13T06:54:51.068	Free	R	VCC1110_NQ4_contributed_vm_MR_	0.54 e-/adu	1.994

Template VIMOS_mos_acq_Mask

Data Product ACQUISITION/SLIT,OBJECT/IMAGE

CCD 225kHz,1port,LG/1x1/2048x2440

Original Filename	Archive Filename	Grism	Filter	INS.ADF.ID	DET.OUT1.CONAD	EXPTIME
VIMOS_MOS_SLIT044_0008_A.2.fits	VIMOS.2015-02-13T06:55:13.118	Free	R	VCC1110_NQ2_contributed_vm_MR_	1.81 e-/adu	60.0
VIMOS_MOS_SLIT044_0008_A.3.fits	VIMOS.2015-02-13T06:55:13.117	Free	R	VCC1110_NQ3_contributed_vm_MR_	1.81 e-/adu	60.0
VIMOS_MOS_SLIT044_0008_B.1.fits	VIMOS.2015-02-13T06:55:13.120	Free	R	VCC1110_NQ1_contributed_vm_MR_	1.75 e-/adu	59.994
VIMOS_MOS_SLIT044_0008_B.4.fits	VIMOS.2015-02-13T06:55:13.119	Free	R	VCC1110_NQ4_contributed_vm_MR_	1.79 e-/adu	59.994
VIMOS_MOS_SLIT044_0009_A.2.fits	VIMOS.2015-02-13T06:57:47.867	Free	R	VCC1110_NQ2_contributed_vm_MR_	1.81 e-/adu	60.0
VIMOS_MOS_SLIT044_0009_A.3.fits	VIMOS.2015-02-13T06:57:47.866	Free	R	VCC1110_NQ3_contributed_vm_MR_	1.81 e-/adu	60.0
VIMOS_MOS_SLIT044_0009_B.4.fits	VIMOS.2015-02-13T06:57:47.869	Free	R	VCC1110_NQ4_contributed_vm_MR_	1.79 e-/adu	59.994
VIMOS_MOS_SLIT044_0009_B.1.fits	VIMOS.2015-02-13T06:57:47.868	Free	R	VCC1110_NQ1_contributed_vm_MR_	1.75 e-/adu	59.994
VIMOS_MOS_SLIT044_0010_B.1.fits	VIMOS.2015-02-13T07:01:11.312	Free	R	VCC1110_NQ1_contributed_vm_MR_	1.75 e-/adu	59.994
VIMOS_MOS_SLIT044_0010_B.4.fits	VIMOS.2015-02-13T07:01:11.311	Free	R	VCC1110_NQ4_contributed_vm_MR_	1.79 e-/adu	59.994
VIMOS_MOS_SLIT044_0010_A.3.fits	VIMOS.2015-02-13T07:01:11.314	Free	R	VCC1110_NQ3_contributed_vm_MR_	1.81 e-/adu	59.996
VIMOS_MOS_SLIT044_0010_A.2.fits	VIMOS.2015-02-13T07:01:11.313	Free	R	VCC1110_NQ2_contributed_vm_MR_	1.81 e-/adu	59.996

Template VIMOS_mos_obs_Offset
Data Product SCIENCE/OBJECT/MOS
CCD 225kHz,1port,HG/1x1/2048x4096
Airmass 1.368
DIMM 1.35

Original Filename	Archive Filename	Grism	Filter	INS.ADF.ID	DET.OUT1.CONAD	EXPTIME
VIMOS_MOS_OBS044_0011_B.1.fits	VIMOS.2015-02-13T07:05:58.144	MR	GG475	VCC1110_NQ1_contributed_vm_MR_	0.55 e-/adu	1199.993
VIMOS_MOS_OBS044_0011_B.4.fits	VIMOS.2015-02-13T07:05:58.145	MR	GG475	VCC1110_NQ4_contributed_vm_MR_	0.57 e-/adu	1199.993
VIMOS_MOS_OBS044_0011_A.2.fits	VIMOS.2015-02-13T07:05:58.147	MR	GG475	VCC1110_NQ2_contributed_vm_MR_	0.6 e-/adu	1199.996
VIMOS_MOS_OBS044_0011_A.3.fits	VIMOS.2015-02-13T07:05:58.146	MR	GG475	VCC1110_NQ3_contributed_vm_MR_	0.56 e-/adu	1199.996
VIMOS_MOS_OBS044_0012_A.3.fits	VIMOS.2015-02-13T07:26:52.889	MR	GG475	VCC1110_NQ3_contributed_vm_MR_	0.56 e-/adu	1199.997
VIMOS_MOS_OBS044_0012_A.2.fits	VIMOS.2015-02-13T07:26:52.892	MR	GG475	VCC1110_NQ2_contributed_vm_MR_	0.6 e-/adu	1199.997
VIMOS_MOS_OBS044_0012_B.4.fits	VIMOS.2015-02-13T07:26:52.890	MR	GG475	VCC1110_NQ4_contributed_vm_MR_	0.57 e-/adu	1199.993
VIMOS_MOS_OBS044_0012_B.1.fits	VIMOS.2015-02-13T07:26:52.891	MR	GG475	VCC1110_NQ1_contributed_vm_MR_	0.55 e-/adu	1199.993
VIMOS_MOS_OBS044_0013_A.3.fits	VIMOS.2015-02-13T07:47:47.883	MR	GG475	VCC1110_NQ3_contributed_vm_MR_	0.56 e-/adu	1199.997
VIMOS_MOS_OBS044_0013_A.2.fits	VIMOS.2015-02-13T07:47:47.882	MR	GG475	VCC1110_NQ2_contributed_vm_MR_	0.6 e-/adu	1199.997
VIMOS_MOS_OBS044_0013_B.4.fits	VIMOS.2015-02-13T07:47:47.886	MR	GG475	VCC1110_NQ4_contributed_vm_MR_	0.57 e-/adu	1199.993
VIMOS_MOS_OBS044_0013_B.1.fits	VIMOS.2015-02-13T07:47:47.887	MR	GG475	VCC1110_NQ1_contributed_vm_MR_	0.55 e-/adu	1199.993

Template VIMOS_mos_cal_NightCalib
Data Product CALIB/FLAT,LAMP/MOS
CCD 225kHz,1port,HG/1x1/2048x4096
Lamps QTH10

Original Filename	Archive Filename	Grism	Filter	INS.ADF.ID	DET.OUT1.CONAD	EXPTIME
VIMOS_MOS_LAMP044_0007_A.3.fits	VIMOS.2015-02-13T08:11:28.375	MR	GG475	VCC1110_NQ3_contributed_vm_MR_	0.56 e-/adu	11.995
VIMOS_MOS_LAMP044_0007_A.2.fits	VIMOS.2015-02-13T08:11:28.374	MR	GG475	VCC1110_NQ2_contributed_vm_MR_	0.6 e-/adu	11.995
VIMOS_MOS_LAMP044_0007_B.4.fits	VIMOS.2015-02-13T08:11:28.381	MR	GG475	VCC1110_NQ4_contributed_vm_MR_	0.57 e-/adu	11.993
VIMOS_MOS_LAMP044_0007_B.1.fits	VIMOS.2015-02-13T08:11:28.380	MR	GG475	VCC1110_NQ1_contributed_vm_MR_	0.55 e-/adu	11.993
VIMOS_MOS_LAMP044_0008_A.2.fits	VIMOS.2015-02-13T08:12:39.923	MR	GG475	VCC1110_NQ2_contributed_vm_MR_	0.6 e-/adu	11.998
VIMOS_MOS_LAMP044_0008_A.3.fits	VIMOS.2015-02-13T08:12:39.924	MR	GG475	VCC1110_NQ3_contributed_vm_MR_	0.56 e-/adu	11.998
VIMOS_MOS_LAMP044_0008_B.1.fits	VIMOS.2015-02-13T08:12:39.928	MR	GG475	VCC1110_NQ1_contributed_vm_MR_	0.55 e-/adu	11.993
VIMOS_MOS_LAMP044_0008_B.4.fits	VIMOS.2015-02-13T08:12:39.927	MR	GG475	VCC1110_NQ4_contributed_vm_MR_	0.57 e-/adu	11.993
VIMOS_MOS_LAMP044_0009_A.3.fits	VIMOS.2015-02-13T08:13:52.932	MR	GG475	VCC1110_NQ3_contributed_vm_MR_	0.56 e-/adu	11.995
VIMOS_MOS_LAMP044_0009_A.2.fits	VIMOS.2015-02-13T08:13:52.933	MR	GG475	VCC1110_NQ2_contributed_vm_MR_	0.6 e-/adu	11.995
VIMOS_MOS_LAMP044_0009_B.4.fits	VIMOS.2015-02-13T08:13:52.937	MR	GG475	VCC1110_NQ4_contributed_vm_MR_	0.57 e-/adu	11.993
VIMOS_MOS_LAMP044_0009_B.1.fits	VIMOS.2015-02-13T08:13:52.936	MR	GG475	VCC1110_NQ1_contributed_vm_MR_	0.55 e-/adu	11.993

Template VIMOS_mos_cal_NightCalib
Data Product CALIB/WAVE,LAMP/MOS
CCD 225kHz,1port,HG/1x1/2048x4096
Lamps He / Ar

Original Filename	Archive Filename	Grism	Filter	INS.ADF.ID	DET.OUT1.CONAD	EXPTIME
VIMOS_MOS_WAVE044_0003_A.2.fits	VIMOS.2015-02-13T08:15:00.322	MR	GG475	VCC1110_NQ2_contributed_vm_MR_	0.6 e-/adu	9.984
VIMOS_MOS_WAVE044_0003_A.3.fits	VIMOS.2015-02-13T08:15:00.321	MR	GG475	VCC1110_NQ3_contributed_vm_MR_	0.56 e-/adu	9.984
VIMOS_MOS_WAVE044_0003_B.4.fits	VIMOS.2015-02-13T08:15:00.324	MR	GG475	VCC1110_NQ4_contributed_vm_MR_	0.57 e-/adu	9.979
VIMOS_MOS_WAVE044_0003_B.1.fits	VIMOS.2015-02-13T08:15:00.325	MR	GG475	VCC1110_NQ1_contributed_vm_MR_	0.55 e-/adu	9.979

OB 1117744 | 08:17:04 > 08:31:45 | 00:14:41 | Mode: Service | Loss: No Loss | Status X > C

Grade A

Instrument VIMOS
Name PRE_J1410-p1
Target PRE_J1410-p1
PI Nicolas Tejos
Run 094.A-0575(A)
Container -
Public Comments Seeing around 0.8".
 13 Feb 08:41 - Paranal Observatory

Files produced and additional information

OBS.ID	1117744			
OBS.START	2015-02-13T08:17:04			
Template	VIMOS_img_acq_Preset			
Data Product	CALIB/LAMP,AFC/IMAGE			
CCD	225kHz,1port,HG,AFC/1x1/2048x400			
Lamps	Afc			
Original Filename	Archive Filename	Filter	DET.OUT1.CONAD	EXPTIME
VIMOS_IMG_AFC044_0010_A.2.fits	VIMOS.2015-02-13T08:24:30.202	R	0.55 e-/adu	1.996
VIMOS_IMG_AFC044_0010_B.1.fits	VIMOS.2015-02-13T08:24:30.200	R	0.53 e-/adu	1.995

VIMOS_IMG_AFC044_0010_B.4.fits	VIMOS.2015-02-13T08:24:30.201	R	0.54 e-/adu	1.995
VIMOS_IMG_AFC044_0010_A.3.fits	VIMOS.2015-02-13T08:24:30.203	R	0.56 e-/adu	1.996
VIMOS_IMG_AFC044_0011_B.1.fits	VIMOS.2015-02-13T08:25:17.307	R	0.53 e-/adu	1.994
VIMOS_IMG_AFC044_0011_B.4.fits	VIMOS.2015-02-13T08:25:17.306	R	0.54 e-/adu	1.994
VIMOS_IMG_AFC044_0011_A.3.fits	VIMOS.2015-02-13T08:25:17.308	R	0.56 e-/adu	1.996
VIMOS_IMG_AFC044_0011_A.2.fits	VIMOS.2015-02-13T08:25:17.309	R	0.55 e-/adu	1.996
VIMOS_IMG_AFC044_0012_B.1.fits	VIMOS.2015-02-13T08:25:46.060	R	0.53 e-/adu	1.994
VIMOS_IMG_AFC044_0012_B.4.fits	VIMOS.2015-02-13T08:25:46.059	R	0.54 e-/adu	1.994
VIMOS_IMG_AFC044_0012_A.3.fits	VIMOS.2015-02-13T08:25:46.062	R	0.56 e-/adu	1.996
VIMOS_IMG_AFC044_0012_A.2.fits	VIMOS.2015-02-13T08:25:46.061	R	0.55 e-/adu	1.996

Template VIMOS_img_obs_Offset

Data Product SCIENCE/OBJECT/IMAGE,PRE

CCD 225kHz,1port,LG/1x1/2048x2440

Airmass 1.541

DIMM 0.9

Original Filename	Archive Filename	Filter	DET.OUT1.CONAD	EXPTIME
VIMOS_IMG_OBS044_0001_B.1.fits	VIMOS.2015-02-13T08:26:17.393	R	1.75 e-/adu	119.993
VIMOS_IMG_OBS044_0001_B.4.fits	VIMOS.2015-02-13T08:26:17.392	R	1.79 e-/adu	119.993
VIMOS_IMG_OBS044_0001_A.2.fits	VIMOS.2015-02-13T08:26:17.395	R	1.81 e-/adu	119.998
VIMOS_IMG_OBS044_0001_A.3.fits	VIMOS.2015-02-13T08:26:17.394	R	1.81 e-/adu	119.998
VIMOS_IMG_OBS044_0002_A.3.fits	VIMOS.2015-02-13T08:28:58.794	R	1.81 e-/adu	119.996
VIMOS_IMG_OBS044_0002_A.2.fits	VIMOS.2015-02-13T08:28:58.793	R	1.81 e-/adu	119.996
VIMOS_IMG_OBS044_0002_B.1.fits	VIMOS.2015-02-13T08:28:58.801	R	1.75 e-/adu	119.994
VIMOS_IMG_OBS044_0002_B.4.fits	VIMOS.2015-02-13T08:28:58.802	R	1.79 e-/adu	119.994

OB 1117747 | 08:31:59 > 08:39:43 | 00:07:44 | Mode: Service | Loss: No Loss | Status X > C

Grade A

Instrument VIMOS
Name PRE_J1410-p2
Target PRE_J1410-p2
PI Nicolas Tejos
Run 094.A-0575(A)
Container -
Public Comments Seeing around
0.8".
13 Feb 08:39

Files produced and additional information

OBS.ID 1117747

OBS.START 2015-02-13T08:31:59

Template VIMOS_img_acq_Preset

Data Product CALIB/LAMP,AFC/IMAGE

CCD 225kHz,1port,HG,AFC/1x1/2048x400

Lamps Afc

Original Filename	Archive Filename	Filter	DET.OUT1.CONAD	EXPTIME
VIMOS_IMG_AFC044_0013_B.1.fits	VIMOS.2015-02-13T08:33:15.172	R	0.53 e-/adu	1.994
VIMOS_IMG_AFC044_0013_B.4.fits	VIMOS.2015-02-13T08:33:15.171	R	0.54 e-/adu	1.994
VIMOS_IMG_AFC044_0013_A.3.fits	VIMOS.2015-02-13T08:33:15.174	R	0.56 e-/adu	1.997
VIMOS_IMG_AFC044_0013_A.2.fits	VIMOS.2015-02-13T08:33:15.175	R	0.55 e-/adu	1.997
VIMOS_IMG_AFC044_0014_B.1.fits	VIMOS.2015-02-13T08:33:45.045	R	0.53 e-/adu	1.994
VIMOS_IMG_AFC044_0014_B.4.fits	VIMOS.2015-02-13T08:33:45.046	R	0.54 e-/adu	1.994
VIMOS_IMG_AFC044_0014_A.3.fits	VIMOS.2015-02-13T08:33:45.048	R	0.56 e-/adu	1.998
VIMOS_IMG_AFC044_0014_A.2.fits	VIMOS.2015-02-13T08:33:45.047	R	0.55 e-/adu	1.998

Template VIMOS_img_obs_Offset

Data Product SCIENCE/OBJECT/IMAGE,PRE

CCD 225kHz,1port,LG/1x1/2048x2440

Airmass 1.522

DIMM 0.94

Original Filename	Archive Filename	Filter	DET.OUT1.CONAD	EXPTIME
VIMOS_IMG_OBS044_0003_A.3.fits	VIMOS.2015-02-13T08:34:16.151	R	1.81 e-/adu	119.998
VIMOS_IMG_OBS044_0003_A.2.fits	VIMOS.2015-02-13T08:34:16.152	R	1.81 e-/adu	119.998
VIMOS_IMG_OBS044_0003_B.1.fits	VIMOS.2015-02-13T08:34:16.158	R	1.75 e-/adu	119.994
VIMOS_IMG_OBS044_0003_B.4.fits	VIMOS.2015-02-13T08:34:16.159	R	1.79 e-/adu	119.994
VIMOS_IMG_OBS044_0004_A.2.fits	VIMOS.2015-02-13T08:36:56.791	R	1.81 e-/adu	119.999
VIMOS_IMG_OBS044_0004_A.3.fits	VIMOS.2015-02-13T08:36:56.792	R	1.81 e-/adu	119.999
VIMOS_IMG_OBS044_0004_B.1.fits	VIMOS.2015-02-13T08:36:56.797	R	1.75 e-/adu	119.993
VIMOS_IMG_OBS044_0004_B.4.fits	VIMOS.2015-02-13T08:36:56.796	R	1.79 e-/adu	119.993

Instrument VIMOS
Name PRE_J1410-p3
Target PRE_J1410-p3
PI Nicolas Tejos
Run 094.A-0575(A)
Container -
Public Comments Seeing around
 0.8".
 13 Feb 08:57

Files produced and additional information

OBS.ID 1117750
OBS.START 2015-02-13T08:40:15
Template VIMOS_img_acq_Preset
Data Product CALIB/LAMP,AFC/IMAGE
CCD 225kHz,1port,HG,AFC/1x1/2048x400
Lamps Afc

Original Filename	Archive Filename	Filter	DET.OUT1.CONAD	EXPTIME
VIMOS_IMG_AFC044_0015_B.4.fits	VIMOS.2015-02-13T08:41:30.809	R	0.54 e-/adu	1.994
VIMOS_IMG_AFC044_0015_B.1.fits	VIMOS.2015-02-13T08:41:30.810	R	0.53 e-/adu	1.994
VIMOS_IMG_AFC044_0015_A.3.fits	VIMOS.2015-02-13T08:41:30.814	R	0.56 e-/adu	1.995
VIMOS_IMG_AFC044_0015_A.2.fits	VIMOS.2015-02-13T08:41:30.815	R	0.55 e-/adu	1.995
VIMOS_IMG_AFC044_0016_A.3.fits	VIMOS.2015-02-13T08:50:36.021	R	0.56 e-/adu	1.999
VIMOS_IMG_AFC044_0016_A.2.fits	VIMOS.2015-02-13T08:50:36.022	R	0.55 e-/adu	1.999
VIMOS_IMG_AFC044_0016_B.1.fits	VIMOS.2015-02-13T08:50:36.023	R	0.53 e-/adu	1.994
VIMOS_IMG_AFC044_0016_B.4.fits	VIMOS.2015-02-13T08:50:36.024	R	0.54 e-/adu	1.994
VIMOS_IMG_AFC044_0017_A.3.fits	VIMOS.2015-02-13T08:51:22.577	R	0.56 e-/adu	1.997
VIMOS_IMG_AFC044_0017_A.2.fits	VIMOS.2015-02-13T08:51:22.576	R	0.55 e-/adu	1.997
VIMOS_IMG_AFC044_0017_B.1.fits	VIMOS.2015-02-13T08:51:22.579	R	0.53 e-/adu	1.993
VIMOS_IMG_AFC044_0017_B.4.fits	VIMOS.2015-02-13T08:51:22.578	R	0.54 e-/adu	1.993

Template VIMOS_img_obs_Offset
Data Product SCIENCE/OBJECT/IMAGE,PRE
CCD 225kHz,1port,LG/1x1/2048x2440
Airmass 1.507
DIMM 0.97

Original Filename	Archive Filename	Filter	DET.OUT1.CONAD	EXPTIME
VIMOS_IMG_OBS044_0005_A.2.fits	VIMOS.2015-02-13T08:51:56.730	R	1.81 e-/adu	119.999
VIMOS_IMG_OBS044_0005_A.3.fits	VIMOS.2015-02-13T08:51:56.731	R	1.81 e-/adu	119.999
VIMOS_IMG_OBS044_0005_B.4.fits	VIMOS.2015-02-13T08:51:56.732	R	1.79 e-/adu	119.993
VIMOS_IMG_OBS044_0005_B.1.fits	VIMOS.2015-02-13T08:51:56.733	R	1.75 e-/adu	119.993
VIMOS_IMG_OBS044_0006_A.3.fits	VIMOS.2015-02-13T08:54:37.810	R	1.81 e-/adu	119.996
VIMOS_IMG_OBS044_0006_A.2.fits	VIMOS.2015-02-13T08:54:37.811	R	1.81 e-/adu	119.996
VIMOS_IMG_OBS044_0006_B.1.fits	VIMOS.2015-02-13T08:54:37.820	R	1.75 e-/adu	119.993
VIMOS_IMG_OBS044_0006_B.4.fits	VIMOS.2015-02-13T08:54:37.821	R	1.79 e-/adu	119.993

Instrument VIMOS
Name IMG Phot 4Q PG1323-86-Stetson
Target PG1323-086-Stetson
PI VIMOS team
Run 60.A-9050(A)
Container -
Public Comments

Files produced and additional information

OBS.ID 200265516
OBS.START 2015-02-13T08:57:46
Template VIMOS_img_acq_Preset
Data Product CALIB/LAMP,AFC/IMAGE
CCD 225kHz,1port,HG,AFC/1x1/2048x400
Lamps Afc

Original Filename	Archive Filename	Filter	DET.OUT1.CONAD	EXPTIME
VIMOS_IMG_AFC044_0018_B.1.fits	VIMOS.2015-02-13T08:59:53.736	R	0.53 e-/adu	1.994

VIMOS_IMG_AFC044_0018_B.4.fits	VIMOS.2015-02-13T08:59:53.737	R	0.54 e-/adu	1.994
VIMOS_IMG_AFC044_0018_A.3.fits	VIMOS.2015-02-13T08:59:53.740	R	0.56 e-/adu	1.998
VIMOS_IMG_AFC044_0018_A.2.fits	VIMOS.2015-02-13T08:59:53.739	R	0.55 e-/adu	1.998
VIMOS_IMG_AFC044_0019_B.1.fits	VIMOS.2015-02-13T09:00:23.030	R	0.53 e-/adu	1.994
VIMOS_IMG_AFC044_0019_B.4.fits	VIMOS.2015-02-13T09:00:23.031	R	0.54 e-/adu	1.994
VIMOS_IMG_AFC044_0019_A.3.fits	VIMOS.2015-02-13T09:00:23.033	R	0.56 e-/adu	1.999
VIMOS_IMG_AFC044_0019_A.2.fits	VIMOS.2015-02-13T09:00:23.032	R	0.55 e-/adu	1.999
VIMOS_IMG_AFC044_0020_B.4.fits	VIMOS.2015-02-13T09:00:52.014	R	0.54 e-/adu	1.994
VIMOS_IMG_AFC044_0020_B.1.fits	VIMOS.2015-02-13T09:00:52.013	R	0.53 e-/adu	1.994
VIMOS_IMG_AFC044_0020_A.3.fits	VIMOS.2015-02-13T09:00:52.025	R	0.56 e-/adu	1.998
VIMOS_IMG_AFC044_0020_A.2.fits	VIMOS.2015-02-13T09:00:52.026	R	0.55 e-/adu	1.998

Template VIMOS_img_cal_Photom

Data Product CALIB/STD/IMAGE

CCD 225kHz, 1port, LG/1x1/2048x2440

Airmass 1.044

DIMM 1.02

Lamps

Original Filename	Archive Filename	Filter	DET.OUT1.CONAD	EXPTIME
VIMOS_IMG_STD044_0001_B.4.fits	VIMOS.2015-02-13T09:02:06.413	R	1.79 e-/adu	1.994
VIMOS_IMG_STD044_0001_B.1.fits	VIMOS.2015-02-13T09:02:06.412	R	1.75 e-/adu	1.994
VIMOS_IMG_STD044_0001_A.3.fits	VIMOS.2015-02-13T09:02:06.415	R	1.81 e-/adu	1.997
VIMOS_IMG_STD044_0001_A.2.fits	VIMOS.2015-02-13T09:02:06.414	R	1.81 e-/adu	1.997
VIMOS_IMG_STD044_0002_A.3.fits	VIMOS.2015-02-13T09:02:54.671	R	1.81 e-/adu	1.996
VIMOS_IMG_STD044_0002_A.2.fits	VIMOS.2015-02-13T09:02:54.670	R	1.81 e-/adu	1.996
VIMOS_IMG_STD044_0002_B.1.fits	VIMOS.2015-02-13T09:02:54.678	R	1.75 e-/adu	1.993
VIMOS_IMG_STD044_0002_B.4.fits	VIMOS.2015-02-13T09:02:54.677	R	1.79 e-/adu	1.993
VIMOS_IMG_STD044_0003_B.1.fits	VIMOS.2015-02-13T09:03:42.484	R	1.75 e-/adu	1.993
VIMOS_IMG_STD044_0003_B.4.fits	VIMOS.2015-02-13T09:03:42.483	R	1.79 e-/adu	1.993
VIMOS_IMG_STD044_0003_A.2.fits	VIMOS.2015-02-13T09:03:42.487	R	1.81 e-/adu	1.996
VIMOS_IMG_STD044_0003_A.3.fits	VIMOS.2015-02-13T09:03:42.486	R	1.81 e-/adu	1.996
VIMOS_IMG_STD044_0004_B.4.fits	VIMOS.2015-02-13T09:04:28.728	R	1.79 e-/adu	1.993
VIMOS_IMG_STD044_0004_B.1.fits	VIMOS.2015-02-13T09:04:28.729	R	1.75 e-/adu	1.993
VIMOS_IMG_STD044_0004_A.2.fits	VIMOS.2015-02-13T09:04:28.732	R	1.81 e-/adu	1.999
VIMOS_IMG_STD044_0004_A.3.fits	VIMOS.2015-02-13T09:04:28.733	R	1.81 e-/adu	1.999
VIMOS_IMG_STD044_0005_B.4.fits	VIMOS.2015-02-13T09:07:23.369	V	1.79 e-/adu	1.994
VIMOS_IMG_STD044_0005_B.1.fits	VIMOS.2015-02-13T09:07:23.370	V	1.75 e-/adu	1.994
VIMOS_IMG_STD044_0005_A.3.fits	VIMOS.2015-02-13T09:07:23.374	V	1.81 e-/adu	1.996
VIMOS_IMG_STD044_0005_A.2.fits	VIMOS.2015-02-13T09:07:23.373	V	1.81 e-/adu	1.996
VIMOS_IMG_STD044_0006_A.3.fits	VIMOS.2015-02-13T09:08:10.780	V	1.81 e-/adu	1.999
VIMOS_IMG_STD044_0006_A.2.fits	VIMOS.2015-02-13T09:08:10.779	V	1.81 e-/adu	1.999
VIMOS_IMG_STD044_0006_B.4.fits	VIMOS.2015-02-13T09:08:10.785	V	1.79 e-/adu	1.994
VIMOS_IMG_STD044_0006_B.1.fits	VIMOS.2015-02-13T09:08:10.784	V	1.75 e-/adu	1.994
VIMOS_IMG_STD044_0007_A.2.fits	VIMOS.2015-02-13T09:08:59.625	V	1.81 e-/adu	1.999
VIMOS_IMG_STD044_0007_A.3.fits	VIMOS.2015-02-13T09:08:59.624	V	1.81 e-/adu	1.999
VIMOS_IMG_STD044_0007_B.1.fits	VIMOS.2015-02-13T09:08:59.630	V	1.75 e-/adu	1.993
VIMOS_IMG_STD044_0007_B.4.fits	VIMOS.2015-02-13T09:08:59.629	V	1.79 e-/adu	1.993
VIMOS_IMG_STD044_0008_B.4.fits	VIMOS.2015-02-13T09:09:45.926	V	1.79 e-/adu	1.993
VIMOS_IMG_STD044_0008_B.1.fits	VIMOS.2015-02-13T09:09:45.925	V	1.75 e-/adu	1.993
VIMOS_IMG_STD044_0008_A.3.fits	VIMOS.2015-02-13T09:09:45.930	V	1.81 e-/adu	1.999
VIMOS_IMG_STD044_0008_A.2.fits	VIMOS.2015-02-13T09:09:45.931	V	1.81 e-/adu	1.999

OB Grades

- A** : Fully within constraints - OB completed
- B** : Mostly within constraints, some constraint is ~10% violated - OB completed
- C** : Out of constraints - OB must be repeated
- D** : Out of constraints - OB considered completed
- X** : Uncertain / Not Applicable
- _** : no grade assigned

Tickets

- (c)** : created during the given night report
- (m)** : modified during the given night report