

High-resolution SZE observations of RX J1347.5-1145 as a case study for ALMA

Tetsu Kitayama
Toho University, Japan

Outline

Obs. of the most X-ray-luminous cluster at 150 & 350GHz
Highest resolution ($\sim 15''$) SZE images
Implications on cluster physics
Prototype of high resolution/frequency studies **by ALMA**

Collaborators

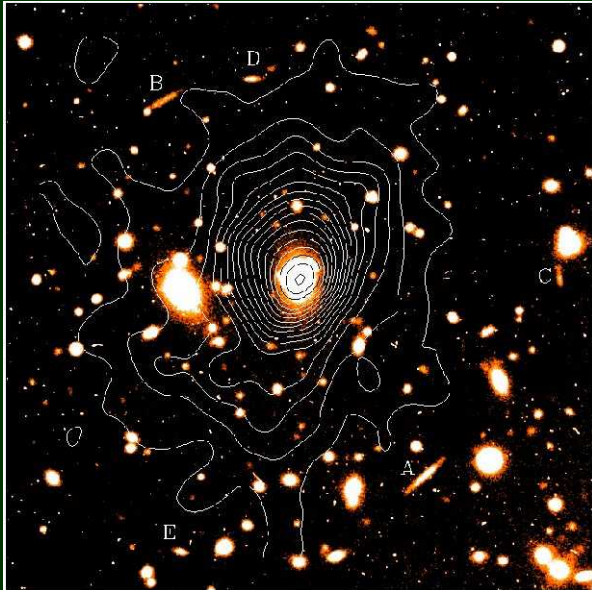
E. Komatsu, N. Ota, T. Kuwabara, Y. Suto,
M. Takizawa, T. Tsutsumi, S. Schindler,
M. Hattori, H. Matsuo, R. Kawabe, K. Yoshikawa

References

Komatsu et al. (1999) *ApJ* 516, L1
Komatsu et al. (2001) *PASJ* 53, 57
Kitayama et al. (2004) *PASJ* 56, 17

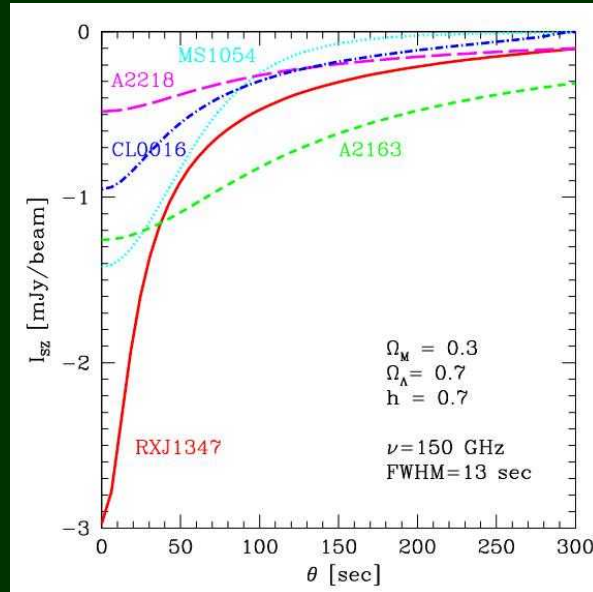
Why RX J1347.5-1145 ?

The most X-ray luminous galaxy cluster known

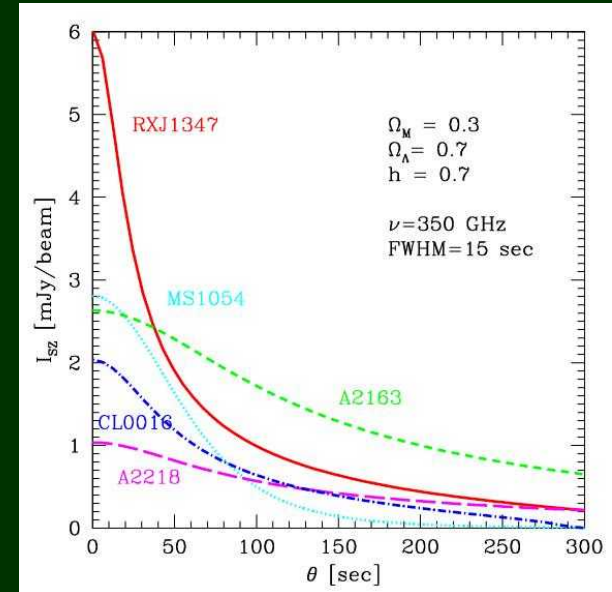


ROSAT & R-band
(Schindler et al. 1997)

$z=0.451$
 $\langle kT \rangle = 9.3 \text{ keV}$
 $y_0 = 8.0 \times 10^{-4}$



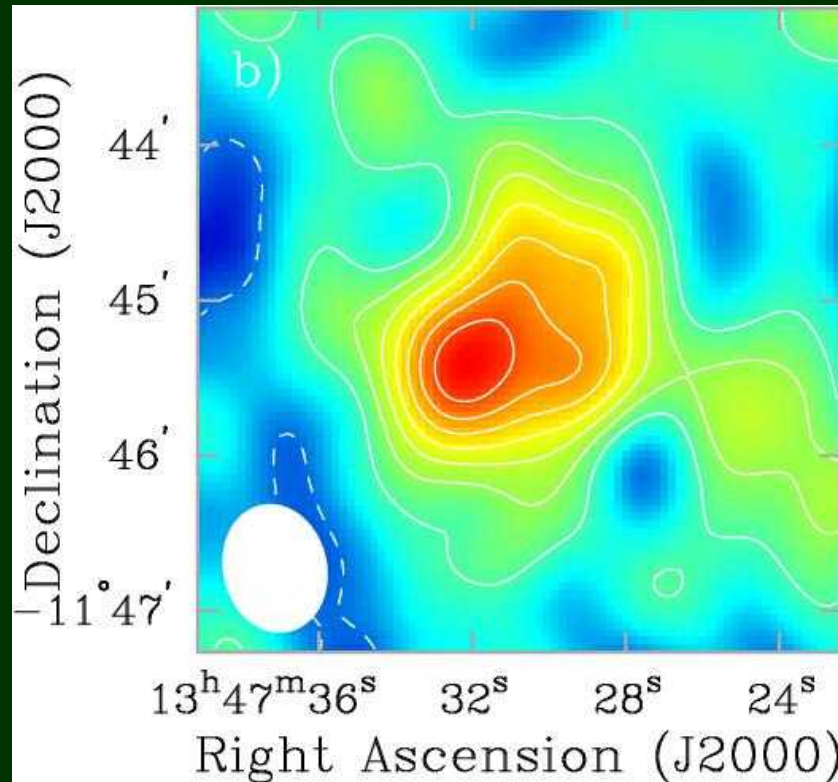
Model SZE profile
150GHz



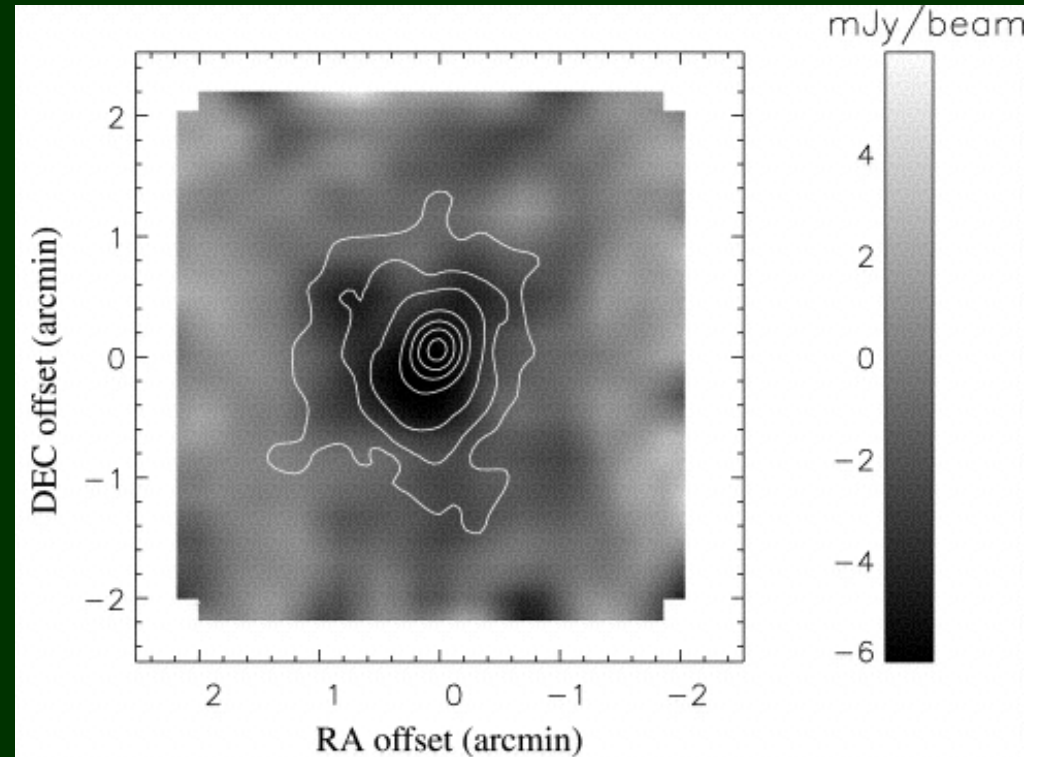
Model SZE profile
350GHz

Strongest & very compact SZE
“best” target for high resolution studies

SZE maps of RX J1347.5-1145 (1)



28.5GHz, BIMA/OVRO
40''x50'' beam
(Carlstrom et al. 2002;
Reese et al. 2002)



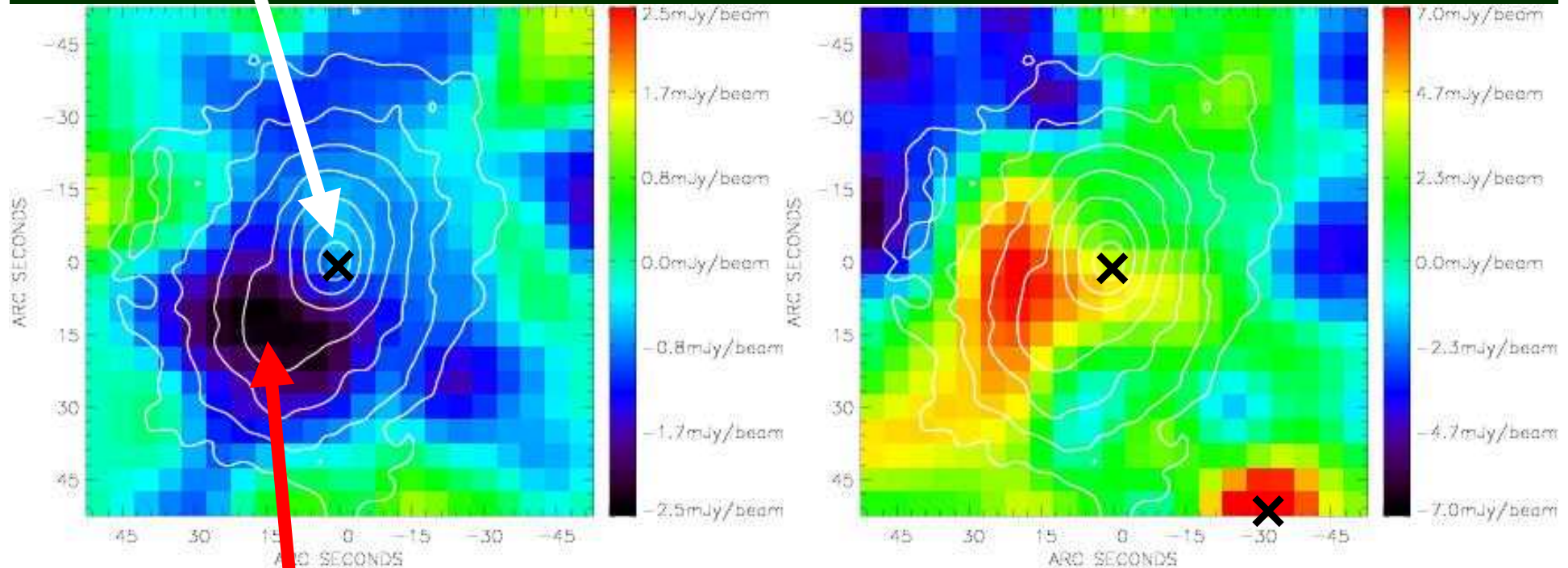
143GHz, Diabolo on IRAM 30m
22'' beam, 20'' smoothing
Contours: ROSAT X-ray
(Pointecouteau et al. 1999; 2001)

Point source-subtracted images

SZE maps of RX J1347.5-1145 (2)

point source

100", 600 kpc



150GHz, NOBA on Nobeyama 45m

13" beam, 16" smoothing

$1\sigma = 0.6\text{mJy/beam}$ in the smoothed image

(Komatsu et al. 2001)

Contours: Chandra X-ray (Allen et al. 2002)

350GHz, SCUBA on JCMT 15m

15" beam, 16" smoothing

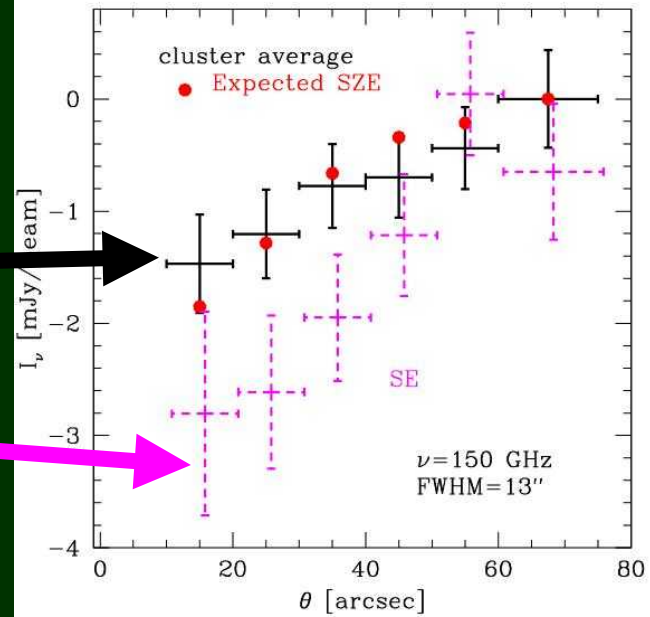
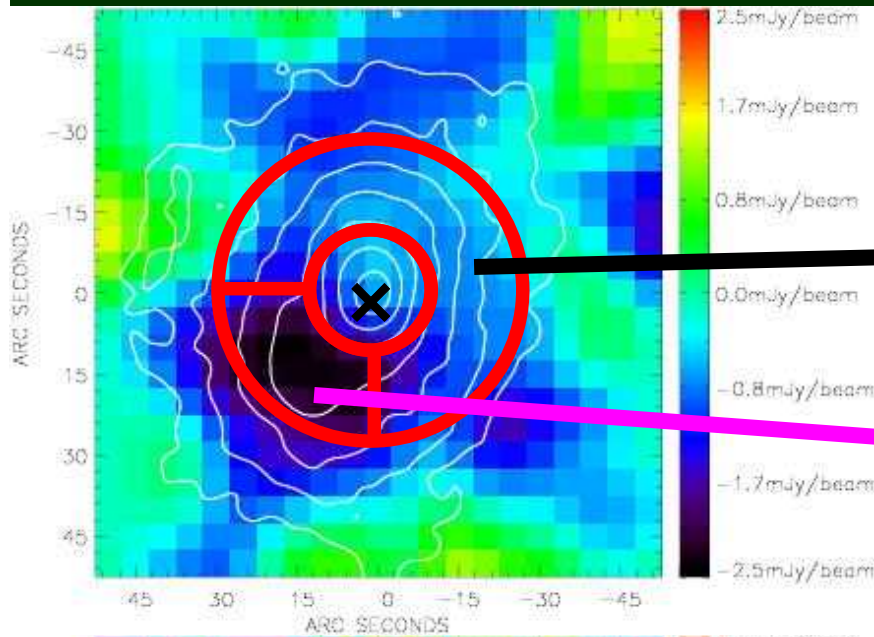
$1\sigma = 2.5\text{mJy/beam}$ in the smoothed image

(Komatsu et al. 1999)

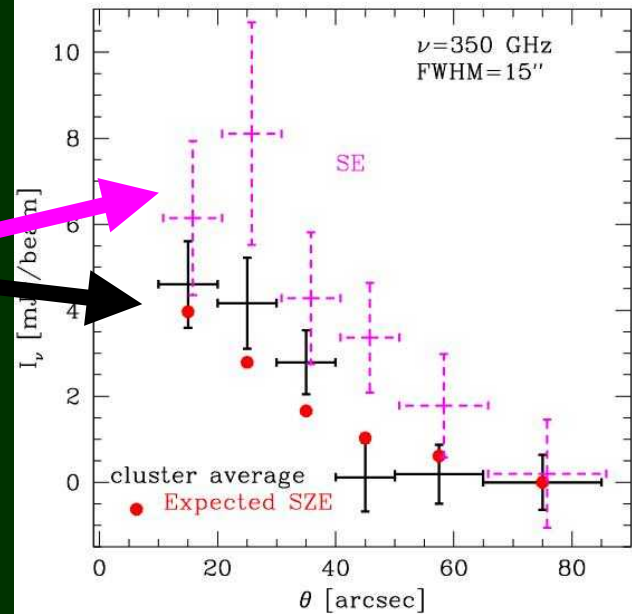
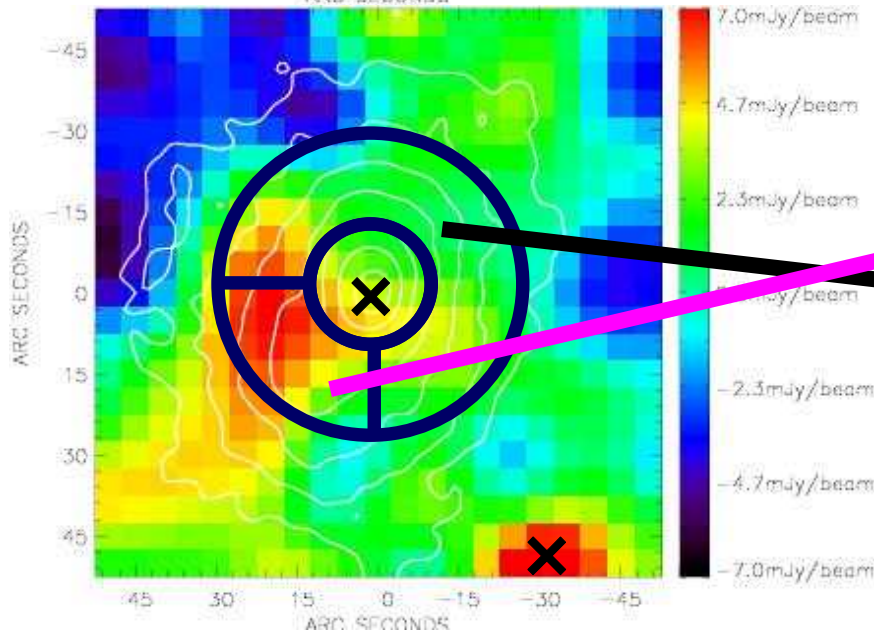
Highest resolution SZE images, point sources un-subtracted

Hot substructure at $\sim 20''$ (120 kpc) off center, discovered by SZE

SZE signals of RX J1347.5-1145



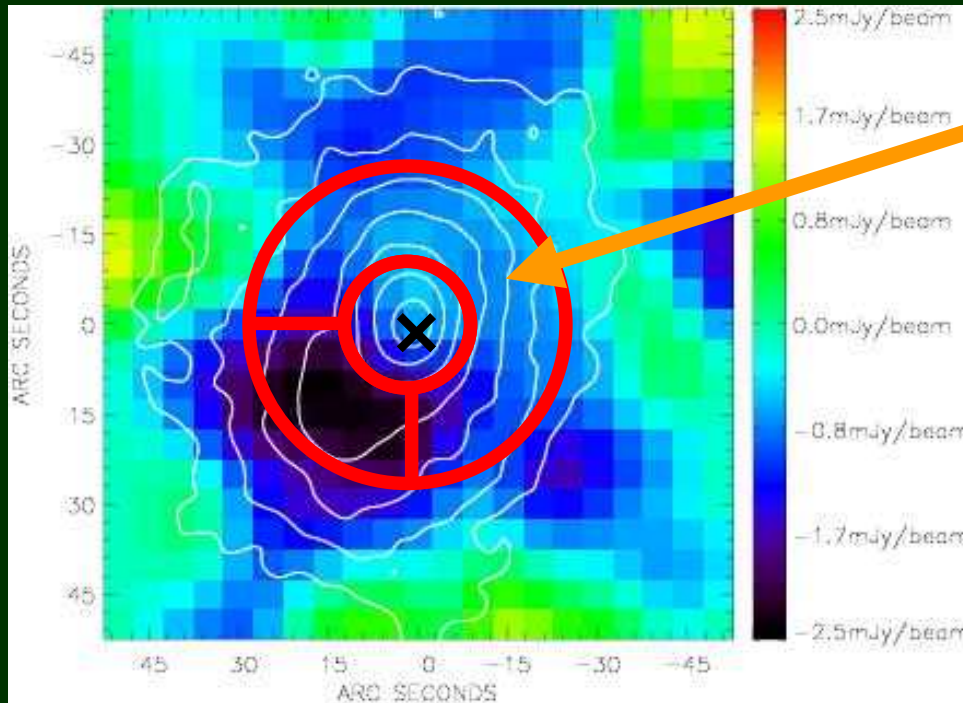
150GHz



350GHz

Applications of high resolution SZE data (1)

(Kitayama et al. 2004)



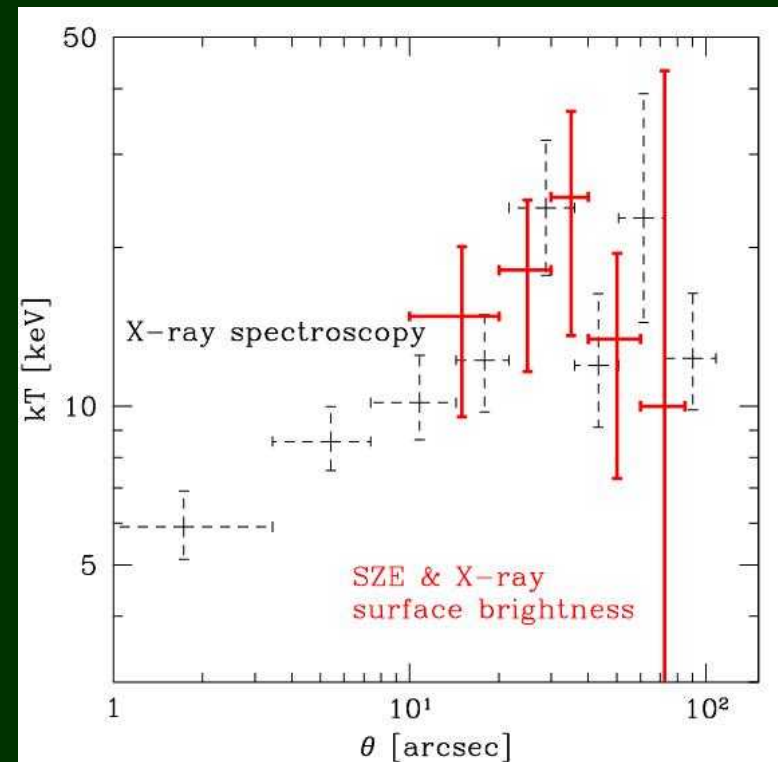
Temperature deprojection
by imaging data only

$$I_{\text{SZ}} \quad n(r)T(r) dl$$

$$I_{\text{X}} \quad n^2(r) T^{1/2}(r) dl$$

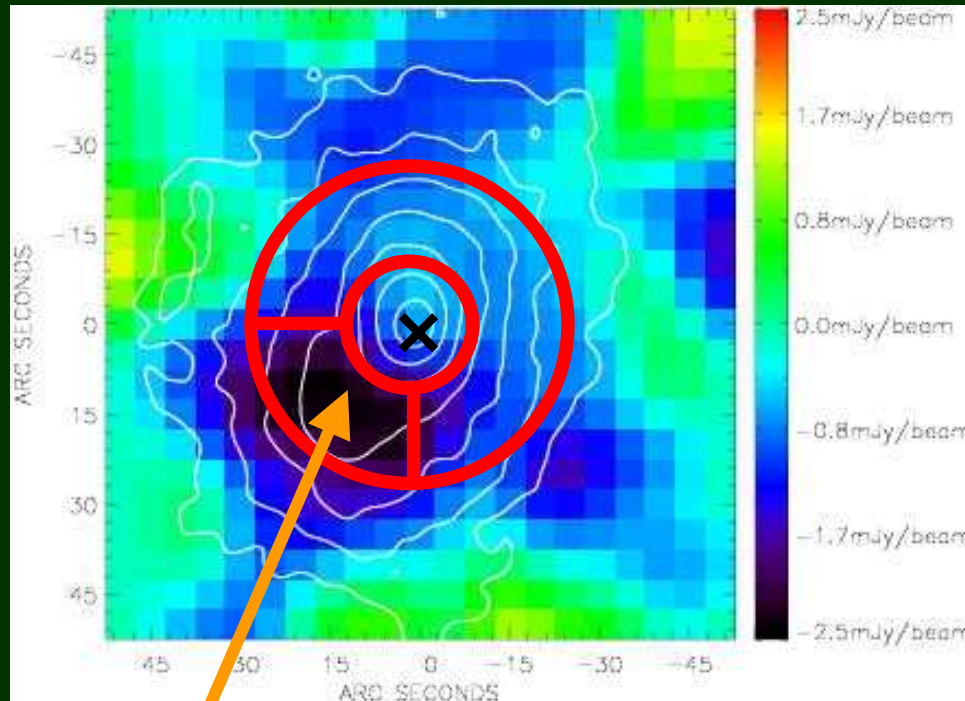
assuming $V=0$, spherical symmetry

- Can **mask** point sources & inhomogeneous regions
- Probe of **temperature structures** even for clusters with **no X-ray spectroscopy**



Applications of high resolution SZE data (2)

(Kitayama et al. 2004)



Unique tool to spatially resolve
very hot gas with $kT > 20 \text{ keV}$

cf. current X-ray imagers $E < 10 \text{ keV}$

Properties of hot substructure:

$n_{\text{ex}} = (1.45 \pm 0.58) \times 10^{-2} \text{ cm}^{-3}$
 $L_{\text{ex}} = 250 \pm 190 \text{ kpc}$ (l.o.s. extent)
 $kT_{\text{ex}} = 28.5 \pm 7.3 \text{ keV}$
cf. X-ray spectra: $kT_{\text{ex}} > 21.5 \text{ keV}$

merger shock?

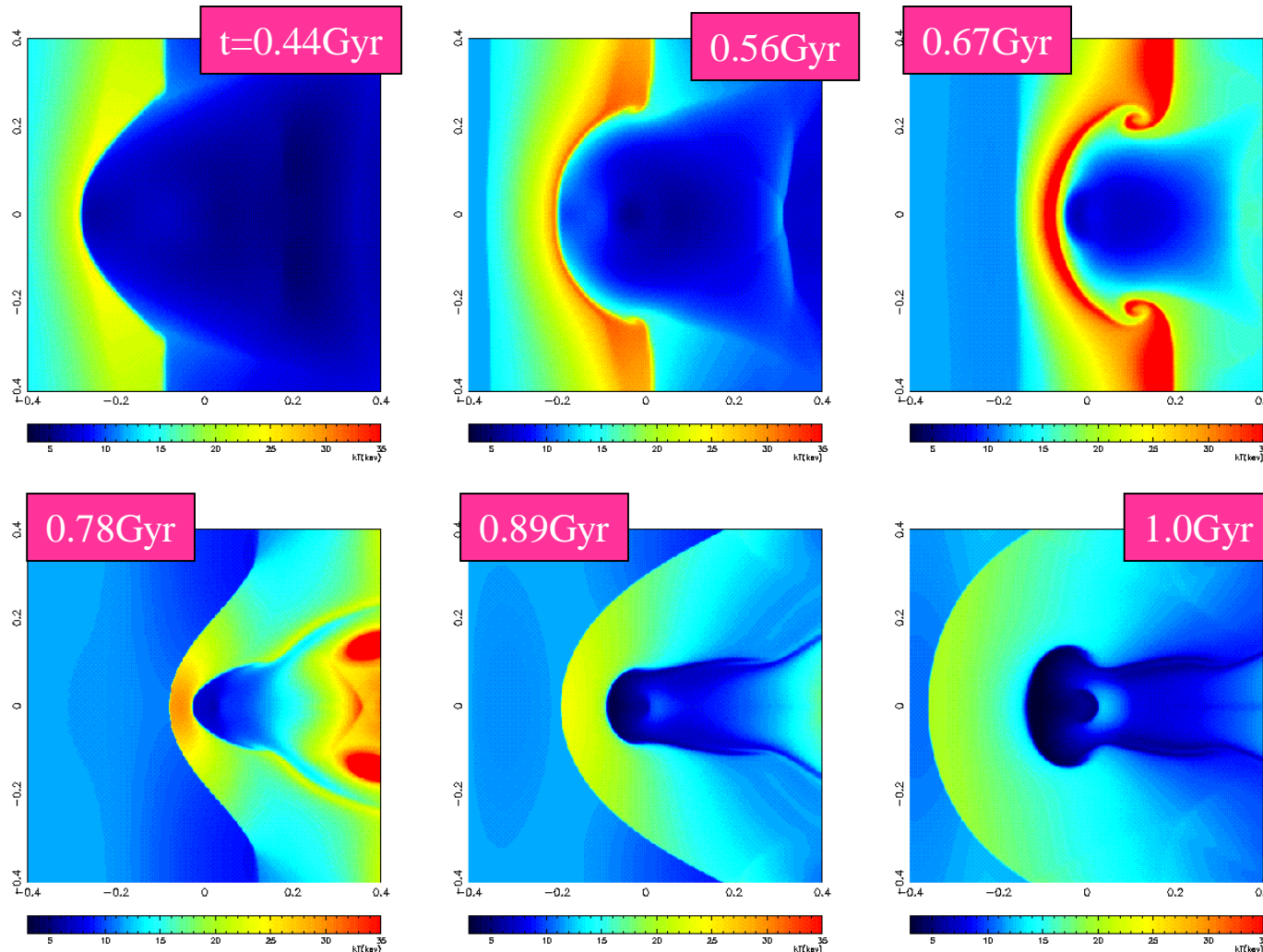
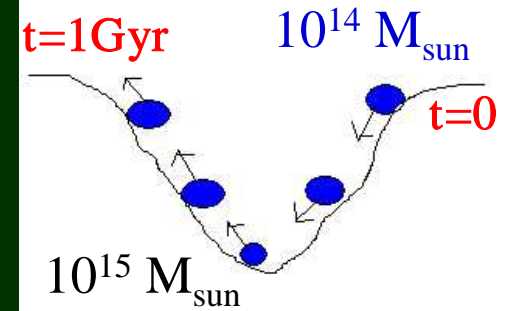
Mach number ~ 2.1

$v_{\text{pres shock}} \sim 3900 \text{ km/s}$,

$v_{\text{post shock}} \sim 1600 \text{ km/s}$ (shock frame)

Simulations of sub-cluster mergers (Takizawa 2005)

Temperature maps at the central surface



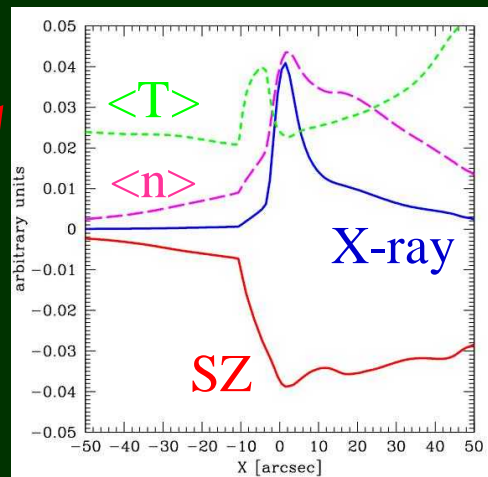
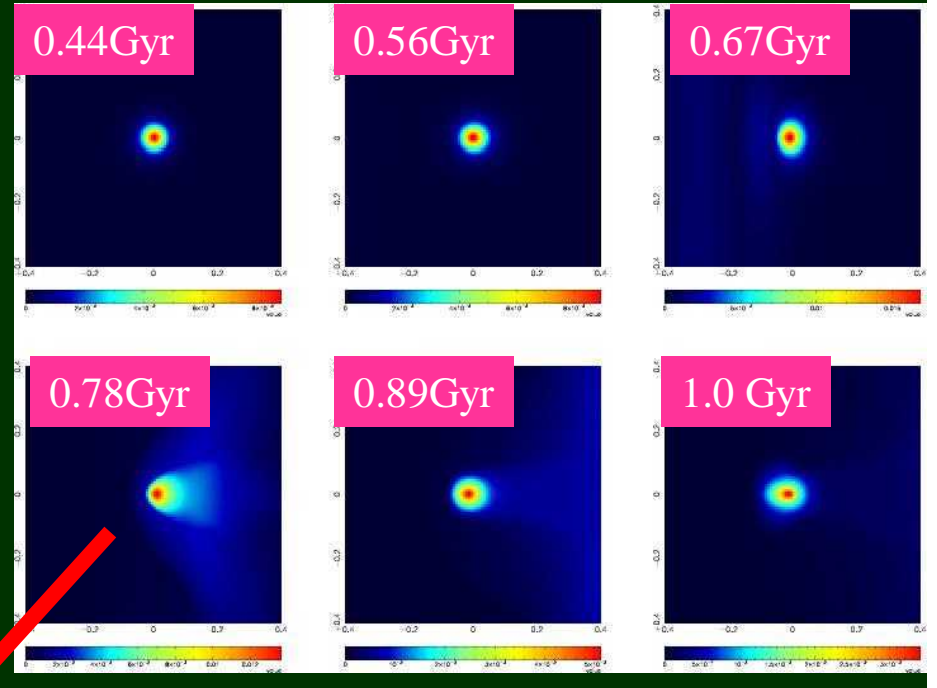
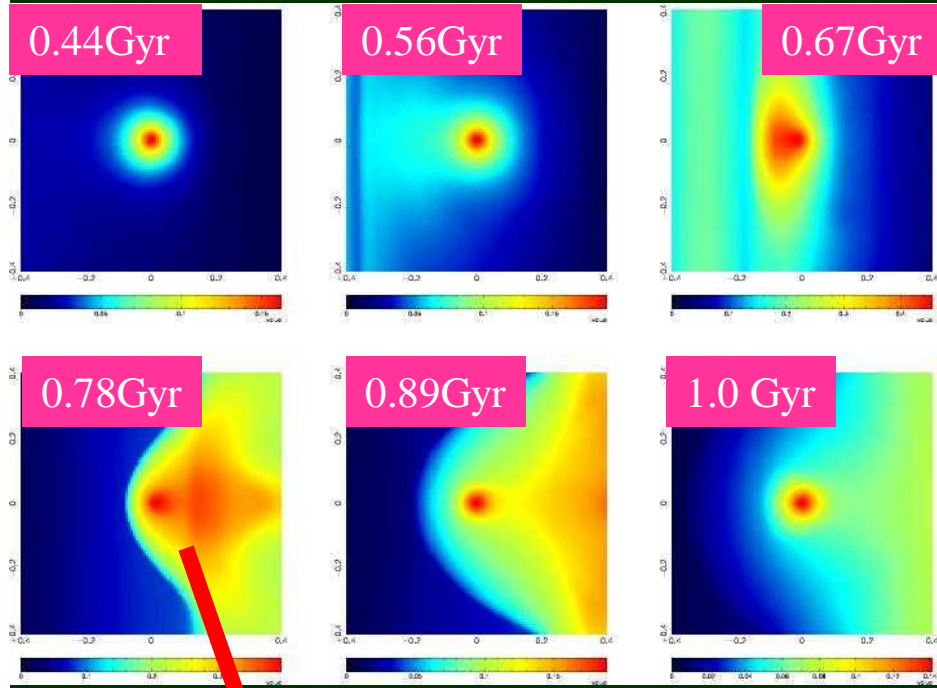
- Eulerian mesh
- $N=400^3$
- $L=0.8 \text{ Mpc}$

$kT_{\text{max}} \sim 30 \text{ keV}$
 $V_{\text{max}} \sim 4000 \text{ km/s}$
 $\sim 0.1 \text{ Gyr}$

Simulations of sub-cluster mergers (Takizawa 2005)

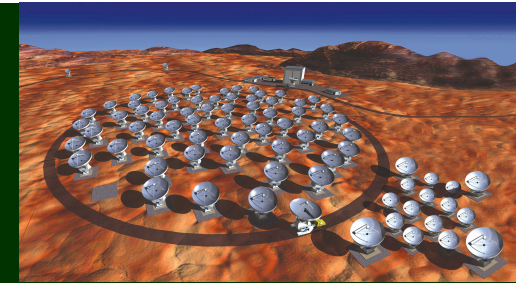
$$I_{SZ} \quad n_e T_e dl$$

$$I_X \quad n_e^2 T_e^{1/2} dl$$

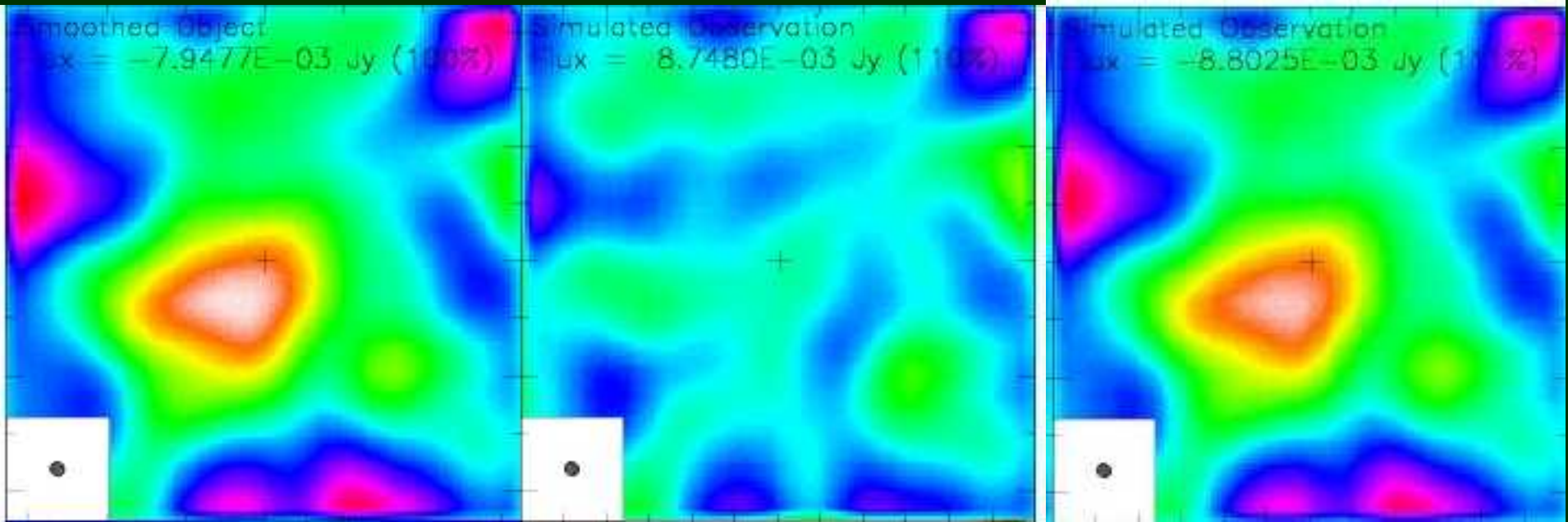


SZE image is highly disturbed,
while X-ray remains compact.
better tracer of shock front

Feasibility simulations for ALMA by GILDAS (Tsutsumi et al. 2005)



90''



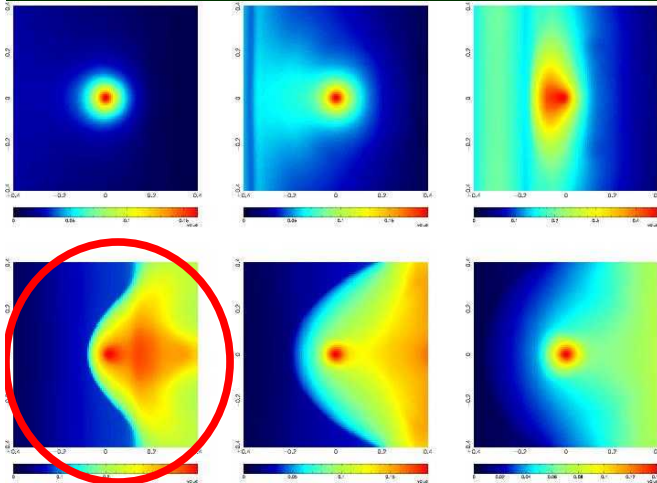
INPUT based on
150GHz data (13''FWHM)
of RX J147.5-1145

ALMA 64 arrays
longest baseline 150m
13 mosaics, 18 min

with ACA
longest baseline 30m
13 mosaics, 72 min

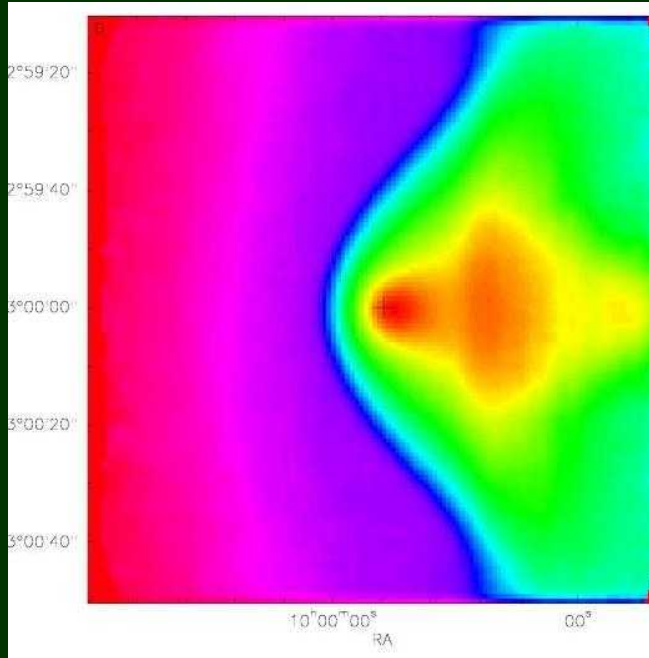
$\sigma = 0.03$ mJy/beam
peak = -0.22 mJy/beam
FWHM=2.4''

ALMA imaging Simulations



INPUT:

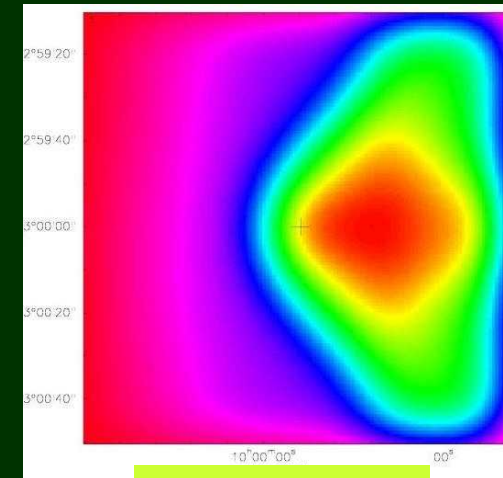
Snapshot from cluster merger simulations (Takizawa 2005).
Place it at $z=1$, Dec = -23 deg.



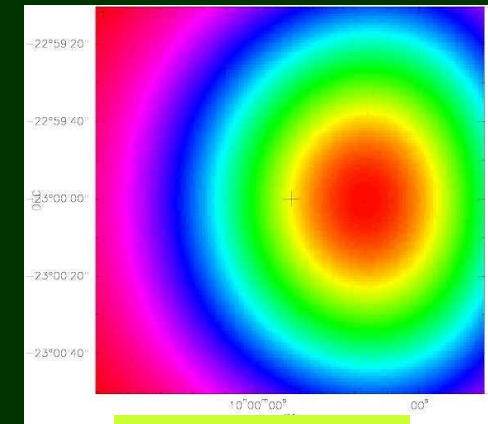
Output:

ALMA 64 arrays + ACA
13 field mosaic, 90min total
no thermal noise (preliminary!)

FWHM = 2.4" @ 150GHz



14'' FWHM

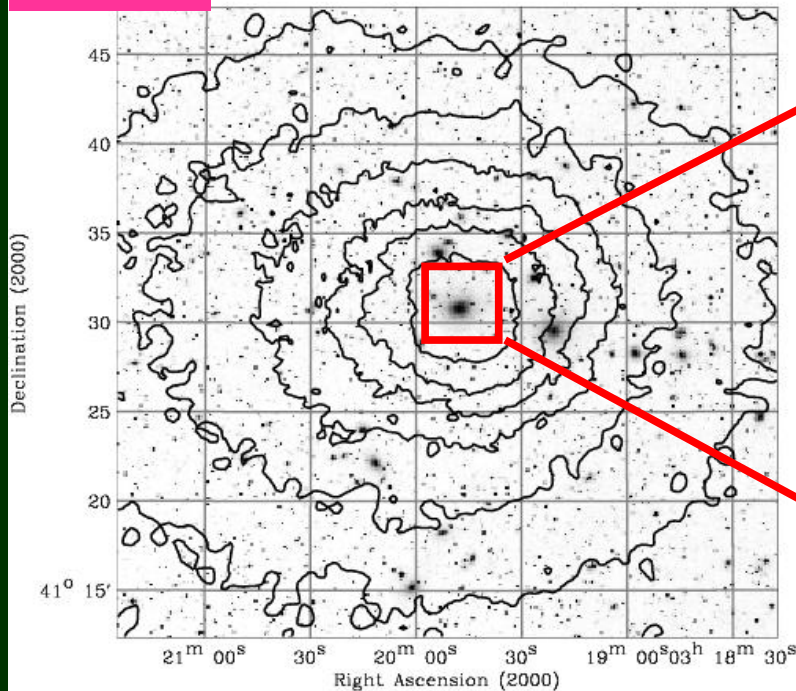


60'' FWHM

Impacts of high resolution

X-rays: drastic progress in understanding of ICM

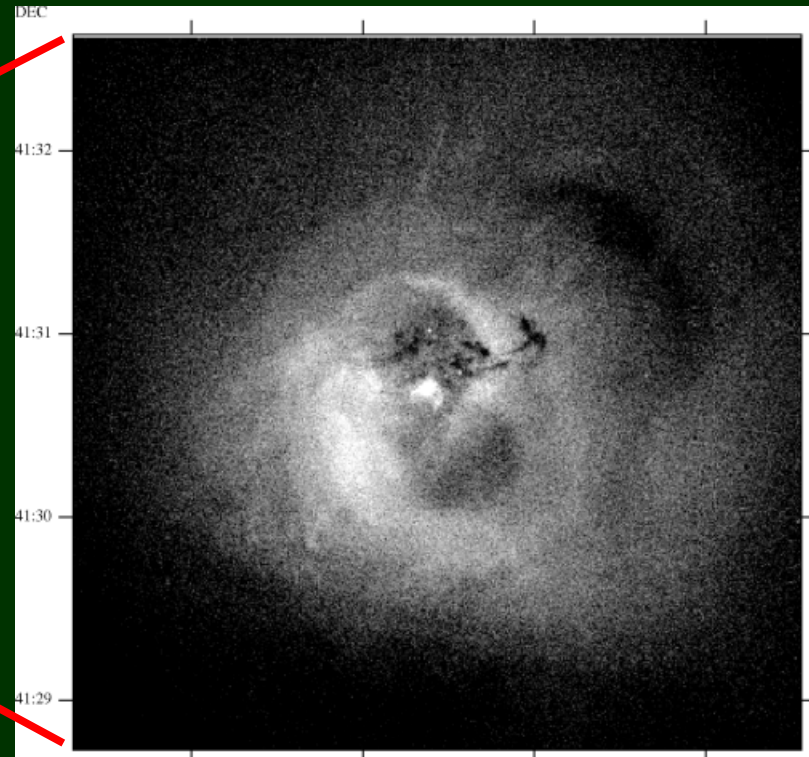
Perseus



ROSAT/PSPC contour + optical image
FWHM $\sim 25''$ (Ettori et al. 1998)



$\times 50$



Chandra/ACIS-S image
FWHM $\sim 0.5''$ (Fabian et al. 2003)

Most of current SZE images
FWHM \sim arcmin

ALMA: FWHM $\sim 2''$ @ 150GHz

Conclusions

High resolution SZE + X-ray images
Powerful probe of cluster physics

e.g. RX J1347.5-1145 at $z=0.45$
strongest SZE & most X-ray luminous

- Temperature profile solely from imaging data

high z clusters with no X-ray spectroscopy

- Unique tracer of very hot gas with $kT > 20$ keV

cf. current X-ray imagers: $E < 10$ keV

Applicable to a larger number of clusters by ALMA!