

EUROPEAN SOUTHERN OBSERVATORY

VERY LARGE TELESCOPE

Phase 2 Proposal Preparation Tool
version 3 (P2PP3)

User Manual

Doc. No. VLT-MAN-ESO-19200-5167

Issue 5

30 July 2012

Prepared Marina Rejkuba 30 July 2012
Name Date Signature

Approved Francesca Primas
Name Date Signature

Released Fernando Comerón
Name Date Signature

This page was intentionally left almost blank

Change Record

Issue/Rev.	Date	Section/Parag. affected	Reason/Initiation/Documents/Remarks
Issue 1	23.09.09	all	Complete re-write of P2PP. First release of P2PP version 3 with new functionalities and concepts introduced to support Public Surveys
Issue 2	30.06.10	5.4.4, 7.7, Fig. 10, 11, and 15	Release of P2PP version 3.1.4 Added information about the new Twilight constraint and updated figures
Issue 3	22.12.11	Sec. 1, 2, 3 New Sec. 3.1	P89: release of P2PP version 3.2 deployed on VISTA, VST and UT2 instruments
Issue 4	27.06.12	Minor changes in most sections New Sec. 3.4	P90: release of P2PP version 3.3 deployed on all Paranal instruments
Issue 5	30.07.12	Minor changes in 4.1, 4.2, 4.3 New sections 5.6 and 5.7	P90: added information on importing target information into OBs

This page was intentionally left almost blank

Contents

1	Introduction	1
1.1	P2PP3 Version	1
1.2	Supported platforms	1
1.3	Where to obtain help and further information	1
1.4	P2PP tutorials and test account	2
1.5	Further reading	2
1.6	Credits and acknowledgments	3
2	Basic Observation Blocks concepts	4
2.1	The VLT Data Flow System	4
2.2	Observation Blocks and templates	4
2.3	A note on calibration blocks and calibration templates	7
2.4	Scheduling Containers	7
2.4.1	Concatenation	8
2.4.2	Time Link	9
2.4.3	Group	10
2.5	Ranking Priorities for Observing Blocks and Scheduling Containers	10
3	Installing and starting P2PP	14
3.1	Service vs. Visitor Mode use of P2PP3	14
3.2	Downloading and installing P2PP	14
3.3	The P2PP User name and password	14
3.4	Phase 2 Delegation	15
3.5	Starting P2PP	15
4	A quick overview of P2PP	16
4.1	The Local Cache	16
4.2	Phase 1 Information	16
4.3	Instrument Packages	17
4.4	The P2PP main Graphical User Interface	18
4.5	Exiting P2PP	21
5	Creating and editing Observation Blocks and the README file	22
5.1	Updating the information on Observing Runs	22
5.2	Creating a new OB and scheduling container	22
5.3	Subfolders	24
5.4	The View OB window	24
5.4.1	Observation Description view	25
5.4.2	Templates	25
5.4.3	Target View	27
5.4.4	Constraint Set View	27
5.4.5	Time Intervals View	28
5.5	Modifying an existing OB	30
5.6	Assigning Phase 1 Targets to OBs	30
5.7	Importing external lists of targets	30
5.8	Import Survey Definition	31
5.9	OB Reports and execution times	33
5.9.1	Checking the expected execution time against the time allocated to your run	33
5.10	Finding charts and ephemeris files	34
5.10.1	Generic finding chart requirements	34

5.10.2	Ephemeris file requirements	34
5.10.3	Attaching finding charts	34
5.10.4	Attaching ephemeris files	35
5.11	Copying and pasting information among OBs: the OB properties option	36
5.11.1	Copy-paste of OBs belonging to different observing runs	37
5.12	Moving OBs between runs	37
5.13	Importing and exporting OBs in ASCII format: the IMPEX mechanism	38
5.13.1	Producing exported OBs and containers and importing them	39
5.13.2	Import/Export and attached files (finding charts, ephemeris, and configuration files)	41
5.14	OB verification	41
5.15	The README file facility	42
5.15.1	Preparing the README information	42
6	Making OBs reach the Observatory	44
6.1	Submitting your Phase 2 package (OBs and README file) in Service Mode	44
6.1.1	Submitting OBs and scheduling containers to the ESO Database	44
6.1.2	Submitting the README file to the ESO Database	45
6.2	Notifying ESO of the submission of the Phase 2 package: <code>p2pp-submit</code>	45
6.3	Certification of the Phase 2 package by ESO	45
6.3.1	Checking OBs and containers out of the ESO Database: the Database Browser	46
6.3.2	OB status	48
6.3.3	Resubmitting OBs with modified finding charts or ephemeris files	49
6.3.4	Checking out the README file	49
7	Important notes on the preparation of Service Mode observations	51
7.1	OBs are executed only once	51
7.2	Calibration Plans and additional calibration observations	51
7.3	Execution overheads are part of the allocated time	52
7.4	Independent execution of each OB	52
7.5	OB duration limited to one hour	52
7.6	Need to maintain OBs simple	53
7.7	The Constraint Set and its consistency with Phase 1 information	53
7.8	Dealing with Target of Opportunity and Solar System target observations in Service Mode	55
A	Highlighting, sorting, and customizing column widths	56
A.1	Selecting items	56
A.2	Reshaping columns	56
A.3	Reshaping windows	56
B	Troubleshooting	57
C	Acronym List	58

List of Figures

1	Schematic composition of a Science OB and a Calibration Block (CB).	6
2	Schematic view of the Time Link container.	8
3	Example of an observing run with two <i>identical</i> groups.	11
4	The inverted normalized group score and group contribution form the group rank.	11

5	OB_A is executed, raising its group score to 50.00%, and immediately after that the OB_B is executed raising its group score to 80.00%.	12
6	OB_B becomes non-observable for some reason.	12
7	OB_D is executed, increasing its group score to 50.00% (top), then OB_B becomes observable again and is executed (center), and after that OB_F is executed, increasing its group score to 80.00% (bottom).	12
8	The P2PP login window.	15
9	The P2PP main GUI Obs/Calib Blocks view.	18
10	The P2PP main GUI Schedule view.	19
11	The View OB window as it appears for a newly created OB.	23
12	The View OB window with the contents of a typical OB.	24
13	The Target View OB window with the target information.	27
14	The Constraint Set View OB window with the information about the observational constraints for the OB.	28
15	The Time Intervals View OB window with the information about possible absolute time windows for the OB execution.	29
16	The <i>Import Survey Definition</i> window.	32
17	The <i>Attach Finding Chart</i> window.	35
18	The <i>Export</i> window.	39
19	The <i>Import</i> window.	40
20	The README Edit window.	43
21	The Database Browser window.	46

This page was intentionally left almost blank

1 Introduction

This manual describes how to use P2PP version 3 (P2PP3), the ESO Phase 2 Proposal Preparation Tool that is used to define observations with VLT, VLTI, VISTA and VST instruments observations preparation. For the preparations of observations for ESO telescopes and instruments operated in La Silla please refer to the P2PP User Manual version 2.13.

P2PP3 is a Java-based application integrating a set of user interfaces that are needed to prepare the Observation Blocks (OBs) with which instruments at ESO telescopes are operated and to provide the observatory with ancillary execution information. P2PP and OBs are important pieces of the VLT Data Flow System (used also at VISTA and VST, besides the VLT), which we will describe at some length in Section 2.

The survey telescopes, VISTA and VST, are operated in the same way as ESO VLT in service mode. The basic difference is in the size of the observing programmes selected for the Public Surveys and their complexity. To assist the Public Survey teams with the challenge of preparing the large number of observation blocks (OBs) and implementing more complex observing strategies ESO has developed the new scheduling container concepts, which are described in detail in Section 2.4. These are implemented in P2PP3 and are now also available for all VLT and VLTI instruments observation preparation in addition to survey telescopes.

This manual is intended for users who have obtained time at VLT, VLTI, VISTA or VST and need to prepare their OBs. It is neither a technical manual nor an installation guide.

1.1 P2PP3 Version

The P2PP version described in this manual is 3.3.

For the preparations of observations for the ESO La Silla telescopes and instruments please refer to the P2PP User Manual version 2.13, and to the Web page at:

<http://www.eso.org/sci/observing/phase2/P2PPTool.html>

where the information on the latest version of P2PP for La Silla telescopes can be found.

1.2 Supported platforms

In principle, P2PP v3.3 will work within any operating system that supports Java Runtime Environment 1.6.0 or later. It will *not* work with old Java versions (1.5.x). It has been extensively tested on Linux PCs, and ESO guarantees support for P2PP under Linux. Some testing has been done under MacOS X as well. No testing was done for 64bit machines. Although P2PP will normally work correctly on most platforms, there may be configuration problems. In such cases, ESO is only able to provide technical support on a best-effort basis.

1.3 Where to obtain help and further information

- This User Manual is not intended to provide detailed instrument-specific information. Please refer in such cases to the corresponding instrument User Manuals that can be found under the instrument Web pages.
- The latest version of P2PP3, its corresponding on-site installation instructions, and this Manual can be found at

<http://www.eso.org/sci/observing/phase2/P2PPSurveys.html>

- Information on observation preparation procedures and Service Mode observing policies can be found at the ESO User Support Department Web pages:

<http://www.eso.org/sci/observing/phase2/>

- For problem reports or technical information on P2PP3, please contact the User Support Department (usd-help@eso.org)
- For questions regarding installation, functionality, use, or any other inquiries on P2PP3, please contact the User Support Department (usd-help@eso.org)

1.4 P2PP tutorials and test account

A special P2PP test account has been set up to allow access to P2PP3 also to users who want to use it for practice purposes without working on an actual observing run. The account makes it possible to define example OBs for any of the instruments currently supported by P2PP. The details of this account are:

User name: 52052

Password: `tutorial`

Upon logging in using this account, P2PP will give you access to a test observing programme having one run defined for each P2PP-supported instrument.

Video tutorials describing the P2PP3 functionalities with examples how to prepare observations are available from:

<http://www.eso.org/sci/observing/phase2/P2PPSurveys/P2PP3Documentation.html>

1.5 Further reading

Details on the Basic Observation Blocks concept and rules for OBs for Service Mode observing runs is available in the P2PP manual version 2.13 available from P2PP web page:

<http://www.eso.org/sci/observing/phase2/P2PPTool/P2PPDocumentation.html>

and on the Service Mode Guidelines web page of the User Support Department:

<http://www.eso.org/sci/observing/phase2/SMGuidelines.html>

Some sections of this manual are based on the following documents:

T. Bierwirth, P. Nunes, "Requirements Specification: Public Survey Support with P2PP", 2008, Issue 1, VLT DOC XXXX

T. Bierwirth, D. Dorigo, P. Nunes, M. Chavan, "Requirements Specification: Public Survey Support with OT", 2008, Issue 16, VLT DOC XXXX

The following selection of papers give additional information about the VLT Data Flow System, its tools, and the ESO experience with Service Mode observing.

D. Silva, P. Quinn, "VLT Data Flow Operations News", 1997, *The Messenger*, 90, 12.

D.R. Silva, B. Leibundgut, P.J. Quinn, J. Spyromilio, M. Tarenghi, "Data flow system operations: from the NTT to the VLT", 1998, *SPIE Proceedings* 3349.

G. Giannone, A.M. Chavan, D.R. Silva, A.P. Krueger, G.E. Miller, "Long and Short Term Scheduling Tools in ESO", 2000, *ADASS-IX, ASP Conf. Ser.* 216, 211.

A.M. Chavan, D.R. Silva, C. Boarotto, T. Canavan, R. Kemp, G. Giannone, “Front-end system for the VLT’s Data-flow system”, 2000, SPIE Proceedings 4010.

D. Silva, “Service mode scheduling: a primer for users”, 2001, *The Messenger*, 105, 18.

P. Quinn, F. Comerón, R. Gilmozzi, G. Mathys, M. Péron, B. Pirenne, D. Silva, “VLT end-to-end science operations: the first three years”, 2002, SPIE Proceedings 4844, 1.

F. Comerón, M. Romaniello, J. Breysacher, D. Silva, G. Mathys, ‘Four years of Service Mode observing at the VLT: performance and user feedback’, 2003, *The Messenger*, 113, 32.

F. Comerón, ‘Observing in Service Mode: The Experience at the European Southern Observatory’, in *Organizations and Strategies in Astronomy*, vol. 5, ed. A. Heck, Kluwer Acad. Publ.

Information about the Public Surveys policies are available from:

<http://www.eso.org/sci/observing/policies/PublicSurveys/>.

1.6 Credits and acknowledgments

This manual is based on the P2PP v. 2.13 User Manual, written by Fernando Comerón and David Silva, and much of its content is the same as in that manual. The author is very grateful to F. Comerón and D. Silva for permission to use the structure of that document and adopt relevant sections and part of the text that apply also to P2PP version 3.

P2PP version 3 is a software product of the Data Flow Infrastructure Department (and is a part of the Data Flow System Project) of the ESO Software Development Division led by Michèle Péron. It was developed under the leadership of Thomas Bierwirth by Paulo Nunes, Alisdair Manning, and Dario Dorigo. It is based on the version 2.x of P2PP, which was developed under the leadership of Maurizio Chavan by Carlo Boarotto, Tim Canavan, Bob Kemp, Nick Kornweibel, Cynthia Mavros, Ron Lobo, and Paulo Nunes. Scientific oversight and requirements were provided by Fernando Comerón, Francesca Primas, Ferdinando Patat, Marina Rejkuba, Magda Arnaboldi, and Lowell Tacconi-Garman. Comments on an early draft of this document by Joerg Dietrich, Thomas Bierwirth, and Magda Arnaboldi, have improved its presentation.

2 Basic Observation Blocks concepts

2.1 The VLT Data Flow System

The VLT Data Flow System (DFS) is a set of protocols, interfaces and tools developed by ESO for linking together the telescope and instruments with simple observation description tools, on-line data processing capabilities, and automated data archiving. The VLT DFS is implemented for all ESO Telescopes in Paranal and La Silla observatory. This includes the new survey telescopes VISTA and VST.

P2PP is one of the DFS tools, and it is designed to provide astronomers with the interface needed to define observing sequences that can then be executed by the telescope and instrument via the DFS. An introduction to the DFS by D. Silva and P. Quinn can be found at *The Messenger*, vol. 90, p.12 (1997).

P2PP version 3 was developed for the use in Service Mode by Public Survey programmes on VISTA and VST. In Period 89 its use has been expanded to UT2 instruments (X-SHOOTER, FLAMES and UVES) Service and Visitor mode programmes and and in Period 90 (July 2012) its use was extended to all Paranal telescopes. Service Mode users first define in detail their observing programmes that are then executed by ESO staff astronomers when observing conditions are appropriate, taking into account the priorities assigned by the Observing Programmes Committee (OPC), as well as priorities set by the users in the definition of their programmes.

The basic unit for the observations, central to the VLT Data Flow System is the Observation Block (OB). Its concept is briefly described in the section 2.2.

P2PP version 3 contains new functionalities with respect to previous versions of P2PP v. 2.x. These include the introduction of the new structural units called scheduling containers, consisting of two or more OBs. The new scheduling containers implemented in P2PP version 3 are groups of OBs, time links of OBs, and concatenation of OBs. They were created to enable the implementation of more complex observing strategies for programmes containing very large number of OBs, and to allow their efficient scheduling. The scheduling containers are described in section 2.4.

2.2 Observation Blocks and templates

The concept of the **Observation Block** (OB) is central to the VLT Data Flow System. Astronomers specify their programmes in terms of OBs, which contain all the information necessary to obtain a "single" observation. These include the target position, the instrument and exposure setup parameters, and, in Service Mode, also the scheduling requirements, the time constraints, the finding charts, and possibly also ephemerides lists. Such a single observation can contain in principle one or multiple exposures, or even multiple instrument configurations with multiple exposures, although this is usually discouraged. The product of the execution of an OB is normally the smallest dataset consistent with the scientific and technical goals of a given observing programme.

Science Observation Blocks (OBs) can be used to obtain scientific observations of an astronomical target, as well as reference data that require the observation of a specific target (such as photometric standards).

Calibration Blocks (CBs) are used to acquire reference data such as lamp flat fields, biases, comparison lamps, etc. that do not require the observation of an astronomical target.

The core of the OB is composed by a number of instrument-specific **observation templates**. The templates that a typical science OB contains are:

- An **acquisition template**, describing how the target acquisition is to be performed: it includes

the information on the basic instrumental setup necessary for the acquisition; for example, which filter or slit is to be used in the (acquisition) observation, which exposure time the acquisition image should have, which position angle on the sky the slit should have, etc.

- One or more **science templates**, describing the instrument setup and the exposure parameters: for example, which mask should be loaded in a MOS observation, which grism should be used, which grating central wavelength should be set, which jitter pattern should be obtained, what integration time should each exposure have, etc.
- In some cases, the OB may end with an **attached calibration template**, such as for instance an arc lamp exposure for precise wavelength calibration to be obtained right after the last scientific exposure with the instrument in the same configuration.

The set of acquisition, science, and possible attached calibration templates in a given OB compose the **Observation Description**.

In addition to the templates, a science OB contains other important, instrument-independent information:

- **Target information**, including coordinates, proper motion, and, for Solar System targets, differential motion.
- The **Constraint Set**, to be used in Service Mode only, specifying under which external conditions (airmass, seeing, transparency, lunar illumination...) the OB can be executed.
- The **Time Intervals** information, also to be used in Service Mode only, specifying possible intervals (date and time) when the OB need to be started.
- The **Sidereal Time** intervals, where the possible intervals are specified in local sidereal time in which the OB need to be executed.
- The **Calibration Requirements** information, a free text field where comments can be given to the Service Mode observer or where the Visitor Mode observer can include reminders on the calibrations needed.
- Some instruments (e.g. VIRCAM, FORS1/2, VIMOS, FLAMES, NACO...) require the insertion in the templates of *parameter files* generated by instrument-specific observation preparation software (SADT, FIMS, VMMP, FPOSS, NAOS PS...)
- Optionally, one or more **Finding charts**, especially for use in Service Mode (exception: VST and VISTA survey observations do not need finding charts).
- Also optionally, an **Ephemeris file** for moving targets providing their coordinates at different dates.

Obviously, none of these items are present in Calibration Blocks (CBs).

Figure 1 gives a schematic view of the composition of a typical science observation (an OB) and calibration block (CB). Note that Science OBs can include also calibration templates for the observation of reference sources such as standards stars, as well as attached calibrations as described in Section 2.3. Given that only one set of target coordinates can be provided for each OB, and that only one acquisition template is allowed per OB, the observations of a science target and a calibration astronomical source (e.g. a telluric standard star) cannot be in the same OB.

In addition to *acquisition*, *science*, and *calibration* templates there are also **test** templates used for technical maintenance of the instrument. These templates are not available to users.

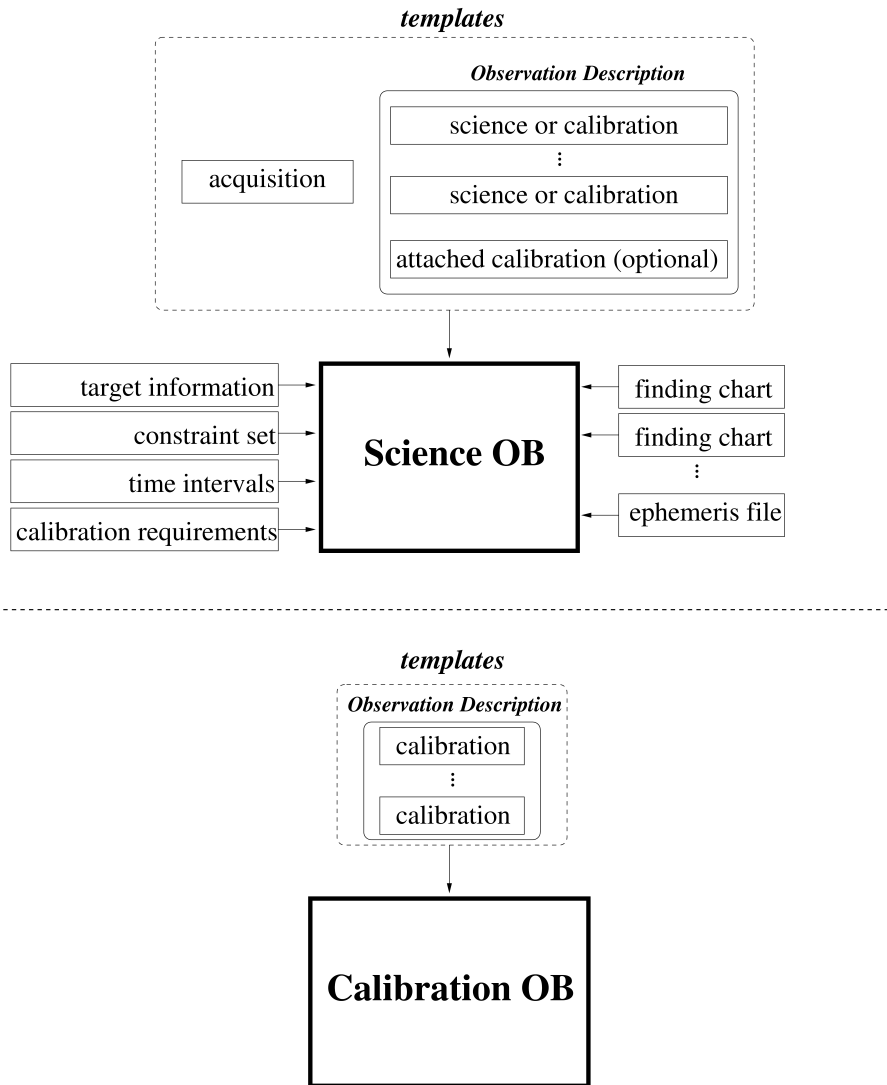


Figure 1: Schematic composition of a Science OB and a Calibration Block (CB).

It is important to note that in general *the components of OBs are not shared between OBs, and that changes to one of these components in a given OB only affect that OB*. For example, although it is possible to define several OBs for the observation of a single target, changing the coordinates of the target in one of the OBs will *not* automatically propagate the change to the other OBs whose targets have the same name. Likewise, changing the value of any parameter within the templates that compose an Observation Description will not propagate the change to all the other OBs having Observation Descriptions with the same name. The same is true for the Constraint Set and for the finding charts. Nevertheless, it is possible to copy components of an OB to one or more OBs by means of the *synchronization* mechanism (Sect. 5.11).

The new functionality in P2PP3 includes the possibility to create "template OBs" (and "template containers", including several "template OBs"), which can be automatically duplicated into a series of OBs (or containers) with the same observational structure (observation description), updating at the same time the coordinates in the OBs. This is done through the *Import Survey Definition* option under the *File* menu (see Sect. 5.8). This functionality is specific to survey telescopes that use input from the Survey Area Definition Tool (SADT). The scheduling containers are described in Section 2.4.

2.3 A note on calibration blocks and calibration templates

It is important to distinguish between **calibration blocks** (CBs) and **calibration templates**, as the term 'calibration' has different meanings in those different contexts:

- **Calibration blocks (CBs)** were described before as those that do not require the observation of an astronomical target. For this reason, they do not contain an acquisition template, and they can contain only calibration templates. Examples of such calibration CBs are bias, dark, screen flats, and arc lamp exposures.
- **Science OBs for the observation of calibration sources** are different from the calibration blocks described above. Their contents are typically the same as those of normal science OBs, but instead of science templates they use calibration templates having a functionality similar to those of the science templates. The reason for distinguishing between these science and calibration templates is that the information that goes into the headers of the resulting frames makes those intended for calibration identifiable as such by the science archive and the data reduction pipelines.
- Finally, **attached calibration templates** produce calibration frames at the end of an OB with the instrument in the same configuration as in the last science exposure obtained.

2.4 Scheduling Containers

The motivation for the introduction of superstructures, scheduling containers, stems from the requirements for the observations with survey telescopes. These functionalities could be useful for the normal Service Mode programmes for VLT, and have now been extended to all Paranal telescopes and instruments.

The basic difference between the "classical" VLT-based Service Mode observing programmes and Public Surveys is that in the latter case the programmes are very few, but are massive, and that identical observations are carried out on a very large set of targets with a large set of similar OBs.

Scheduling containers group several OBs of the same observing run in order to impose specific observation strategies (which are reflected in specific scheduling constraints at the telescope), hence

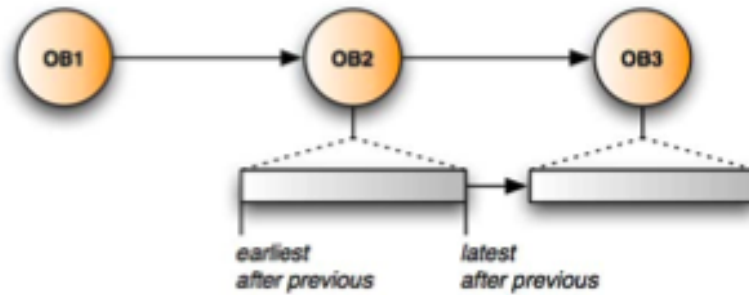


Figure 2: Schematic view of the Time Link container.

influencing the applied OB execution order. This is fundamentally different from the "classical" Service Mode schema for smaller VLT programmes, where OBs are individual units, and their scheduling can only be mildly influenced by the PI of the programme, by assigning the relative priorities among the (small number of) OBs. The huge number of OBs expected for Public Surveys makes this prioritizing of individual OBs less practical.

The scheduling containers are defined and edited in P2PP. The creation of nested container and subcontainer structures is not supported. All containers have to be defined at the outermost level, i.e. directly underneath the respective observing run.

The scheduling priorities depend on the observing constraints, and the relative priorities of the different programmes, but also on the priorities set for the individual OBs and containers. All individual OBs and all containers must have a user priority assigned to them. The OBs belonging to containers, inherit their user priority from the parent container. In other words, all OBs within a container have the same user priority. In the following the three types of scheduling containers are described, and their implications on the execution priorities are described. More detailed description how different scheduling priorities of individual OBs and containers are combined is provided in Section 2.5.

The usage of containers may help defining the best observing strategies, but it should be used with care, because the OBs become linked - failure to observe some OB within a container (due to adverse weather conditions, or some technical problem either within the OB or with the instrument), may have consequences for the scheduling of that OB, but also of the other OBs within the container.

2.4.1 Concatenation

The concatenation container consists of two or more OBs that must be executed "back-to-back" without breaks. The sequence of the execution of OBs in a concatenation cannot be specified.

The following important rule applies to concatenations: if execution of one OB within a concatenation fails, the whole concatenation fails and it must be repeated, irrespective whether any other OB of the concatenation has been successfully executed or not.

The maximum allowed execution length of a concatenation is 1.0h (for possible exceptions please check information on specific instruments Phase 2 web pages). The use of the concatenated OBs has to be clearly justified in the phase 1 and phase 2 material.

2.4.2 Time Link

The time link container defines a sequence of OBs that has to be executed in the given order, respecting the relative time intervals specified for each linked OB (Fig. 2).

There are two kinds of time links:

- **Open Time Link:** only the lower time limit - *earliest after previous* - of the separation interval is defined
- **Closed Time Link:** both lower- *earliest after previous* - and upper time limit - *latest after previous* - are defined. Example: each OB should be executed between one and two weeks from the previous one.

The following rules apply to the OBs in a time link container:

- The first OB can be executed at any suitable time. If the first OB has absolute time constraints specified within the OB (in the Time Intervals view of the OB; see Section 5.4.5), the suitable times are within the specified time window(s).
- All the other OBs within the time link container have only *relative* time constraints, indicating the minimum and (possibly) the maximum time separation for the execution, *after the successful execution of the previous OB* in the time link series. The time delay is expressed in days and hh:mm format.
- After the successful execution of the first OB, an absolute time constraint is imposed on the second OB, by adding the minimum, and maximum delays to the *start time* of the currently successfully executed OB as the suitable time interval for execution of that OB.
- If the absolute time constraint window has passed, and the OB was not successfully executed, the OB will get a status "F" (Failed) - it will expire. The execution of the Time Link series in this case continues with the next OB, which now has acquired absolute time constraints. Here there are two *distinct* cases:
 - The failed OB is not the very first OB of the time link.
In this case, the OB had already an absolute time constraint, and after it fails the next OB acquires an absolute time window by adding the relative minimum and maximum time delays to an assumed hypothetical execution for the failed OB in the middle of its constraint window.
 - The failed OB is the very first OB of the time link.
In this case, failure can only occur if this OB has one or more additional absolute time constraints defined, which have nothing to do with the time link, and all of them have expired. In this case the next OB acquires an absolute time window by adding its relative minimum and maximum time delays to an assumed hypothetical execution of the failed OB at the end of its last absolute time interval.

It should be noticed that, depending on the length of the relative time intervals, and the delays between them, a failure of an OB in a sequence may result in a cascade of failing OBs.

- No absolute time constraints may be imposed on OBs in a time link, except for the first OB in the series.

Essentially after the start of the execution of the time link series, the successive OBs acquire absolute time windows. The presence of absolute time windows increases the priority for the execution of OBs

when the time is suitable (i.e. within the time window), with respect to other OBs in the service mode queue. **However, the drawback is that, if the time window has passed the OB is canceled (it acquires status "F" - failed) and will not be executed at a later time. Therefore, the time links should be used only where necessary.**

2.4.3 Group

The group container is a simple collection of OBs that may be executed independently of each other in any order. Placing the OBs in a group means that if one OB is executed from this group, the user wishes that the other OBs belonging to the same group are executed preferentially before any other part of the survey. This requirement is however soft (desirable), contrary to the hard requirement (mandatory) in concatenations. If the execution of an OB within a group fails, the execution of the other OBs continues, and the failed OB is re-inserted in the group for re-execution (if applicable).

Groups have an overall user priority, which is similar to an OB user priority in the case of independent OBs. In addition, every OB belonging to a group is given a group contribution value, indicating how much the group's overall group score is increased by successfully executing that OB. The group score introduces a new priority level within the ranking engine. Once the observations of a given group have started, the group score is increased, thereby increasing the priority of the execution of all the OBs in that group, with respect to other independent OBs, or with respect to other scheduling containers that may have the same OB user priority or container user priority.

The typical use of groups may be envisaged by the following examples. The observing programme contains several targets located very close to each other on sky and foresee the observation of each target with three OBs, e.g. one per wavelength (different grisms or filters). It is possible to choose the following strategies:

- If possible, all observations of a single target should be completed, i.e. observed with all three OBs, before a new target observation is started. This can be achieved by associating a group of three OBs (one OB per wavelength) to each target.
- If possible, all observations at one wavelength (one grism or filter) should be finished for all targets, before switching to observations at a different wavelength. This can be accomplished by creating a group of OBs for every wavelength (grism or filter), each group containing OBs for all targets.

2.5 Ranking Priorities for Observing Blocks and Scheduling Containers

The introduction of scheduling containers, and the expected large number of OBs with very similar constraints within each Public Survey programme requires an automatic and intelligent ranking algorithm. Also for service mode observations on the VLT an automatic ranking algorithm can help the observer choose among the large number of different OBs. The ranking algorithm produces an ordered list of OBs as a suggestion to the observer which OB to execute next. The rank order depends on various criteria:

- absolute time constraints assigned to all sorts of OBs
- relative time constraints assigned to time link OBs (which are eventually translated to absolute time constraints during OB execution; see below)
- the user priority assigned to individual OBs or to a container
- the group contribution assigned to group OBs

Figure 3: Example of an observing run with two *identical* groups.

OB Name	Group Name	Normalized Group Score	Group Contribution	Normalized Group Contrib.
OB_A	Group 1	0%	5	50%
OB_B	Group 1	0%	2	20%
OB_C	Group 1	0%	3	30%
OB_D	Group 2	0%	50	50%
OB_E	Group 2	0%	20	20%
OB_F	Group 2	0%	30	30%

Figure 4: The inverted normalized group score and group contribution form the group rank.

OB Name	Group Name	Normalized Group Score	Group Contribution	Normalized Group Contrib.	Group Rank
OB_A	Group 1	0%	5	50%	100_050
OB_D	Group 2	0%	50	50%	100_050
OB_C	Group 1	0%	3	30%	100_070
OB_F	Group 2	0%	30	30%	100_070
OB_B	Group 1	0%	2	20%	100_080
OB_E	Group 2	0%	20	20%	100_080

We describe here briefly how the ranking based on these different priorities is computed. The algorithm described here was implemented first for VISTA (for more details see Bierwirth et al. 2010, SPIE 7737, 19), and it was later extended for use on VST, VLT and VLTI with minor adaptations for specific instruments (e.g. adding filtering and ranking according to LST intervals, availability of laser, MOS masks, and other hardware components, and due to several additional constraints such as PWV and ATM). The ranking is done for each OB.

During the observing night, at some pre-defined time intervals, the ranking algorithm examines and sorts the available OBs for execution, and in this way helps the selection of the most suitable OB(s) for execution at any given moment. The result of the computation is the ranking string, which concatenates several decision criteria. The criteria are sorted from more important to less important and include the following:

1. First the non-observable OBs are filtered out, taking into account the current observing conditions (seeing, sky transparency, lunar illumination and distance) with respect to the constraints set in the OBs. After that, the remaining observable OBs are ranked according to the following criteria.
2. The observability class. Based on the current observing conditions (seeing, sky transparency, lunar illumination and distance, wind speed and direction), as well as the target's remaining tracking time (depending on airmass constraint and sidereal time) and observability within absolute time windows set in the OBs (OBs are ranked based on how much time is left to observe them within the suitable time window) the observability class for each OB that passed the first filtering step is computed, assigning higher priority to those OBs which have smaller probability to satisfy all the combined constraints.

The observability class for OBs is further modified by a push-pull (PP) factor. The C-ranked (filler) programme OBs have a positive PP factor which pushes them towards the bottom, while

Figure 5: OB_A is executed, raising its group score to 50.00%, and immediately after that the OB_B is executed raising its group score to 80.00%.

OB Name	Group Name	Normalized Group Score	Group Contribution	Normalized Group Contrib.	Group Rank
OB_C	Group 1	50%	3	30%	50_070
OB_B	Group 1	50%	2	20%	50_080
OB_D	Group 2	0%	50	50%	100_050
OB_F	Group 2	0%	30	30%	100_070
OB_E	Group 2	0%	20	20%	100_080

OB Name	Group Name	Normalized Group Score	Group Contribution	Normalized Group Contrib.	Group Rank
OB_B	Group 1	80%	2	20%	20_080
OB_D	Group 2	0%	50	50%	100_050
OB_F	Group 2	0%	30	30%	100_070
OB_E	Group 2	0%	20	20%	100_080

Figure 6: OB_B becomes non-observable for some reason.

OB Name	Group Name	Normalized Group Score	Group Contribution	Normalized Group Contrib.	Group Rank
OB_B	Group 1	80%	2	20%	20_080
OB_D	Group 2	0%	50	50%	100_050
OB_F	Group 2	0%	30	30%	100_070
OB_E	Group 2	0%	20	20%	100_080

Figure 7: OB_D is executed, increasing its group score to 50.00% (top), then OB_B becomes observable again and is executed (center), and after that OB_F is executed, increasing its group score to 80.00% (bottom).

OB Name	Group Name	Normalized Group Score	Group Contribution	Normalized Group Contrib.	Group Rank
OB_B	Group 1	80%	2	20%	20_080
OB_F	Group 2	50%	30	30%	50_070
OB_E	Group 2	50%	20	20%	50_080

OB Name	Group Name	Normalized Group Score	Group Contribution	Normalized Group Contrib.	Group Rank
OB_F	Group 2	50%	30	30%	50_070
OB_E	Group 2	50%	20	20%	50_080

OB Name	Group Name	Normalized Group Score	Group Contribution	Normalized Group Contrib.	Group Rank
OB_E	Group 2	80%	20	20%	20_080

the pre-imaging runs, carryover, Large Programme and Chilean runs, have a slightly negative PP factor, pulling them towards the top of the ranked list of OBs.

3. The run class rank. The run class rank is the relative scientific priority between different runs (programmes) set by the OPC. All the OBs that satisfy the current observing conditions are ranked according to the run class rank priority.
4. User priority. The user priority is assigned to loose (independent) OBs and to scheduling containers. All OBs belonging to a scheduling container have the same user priority, which they inherit from their container. The user priority ranges from 1 to 10, where the lowest number corresponds to the highest priority. The user priority is decided at the OB or container level and input assigned to the OB/container by the user.
5. Group rank. The group rank is composed of group score and group contribution as explained below. OBs belonging to a group are given a group contribution value, indicating how much the overall group's score is increased by executing that OB. The group contribution is an integer in the range [1 ... MaxGrpContrib] and it is entered in P2PP in the Schedule tab window (see Fig. 10). The group score is a dynamic value - it is calculated by summing up all group contribution values of the **executed** OBs within the group.

In order to make different group scores comparable, they are normalized by the total group contribution, and are expressed in terms of percentage with two significant decimal digits. Finally, the normalized group score and contribution are inverted, such that the lower values correspond to higher priorities (same as for user priority).

The contribution of group ranking to the overall rank of the OB can then be defined as follows:

$$\text{group rank} = \langle \text{inverted normalized group score} \rangle - \langle \text{inverted normalized group contribution} \rangle$$

Whenever a group OB is executed, it raises the group's (non-inverted) normalized score by its (non-inverted) normalized group contribution, i.e. the update of the group score has to operate on non-inverted values, before inverting the new score for updating the group rank. So, while the user priority of an OB (or a container) is static, the group score is a dynamic ranking criterion.

This is best illustrated with a practical example shown in Figures 3 to 7. In this example we assume there is an observing run with two *identical* groups (with the same priorities based on all other criteria). Group 1 contains 3 OBs (OB_A , OB_B , and OB_C), and group 2 also contains three OBs (OB_D , OB_E , and OB_F). Series of Figures 3 to 7 illustrates how, once the execution of a group is started, its priority increases with respect to the other group. Only when - due to other constraints - that group has no more observable OBs to offer, the execution is switched to the second group, but it returns to group 1 as soon as there are OBs observable again.

The final rank string, for all the observable OBs, i.e. OBs satisfying the condition 1 above, is composed of the following substrings:

```
rank string =
    <observability class>_
    <run class rank>_
    <user priority>_
    <group rank>
```

3 Installing and starting P2PP

To prepare the OBs for your observing run you need access to a P2PP installation. This chapter describes how to install P2PP on your computer.

3.1 Service vs. Visitor Mode use of P2PP3

Service Mode users must have a local installation of P2PP available, since they prepare OBs at their home institutes and then submit the OBs (including possible scheduling containers) to ESO for review, scheduling and execution (see Section 6.1).

Visitor Mode users can prepare their observations prior to travelling to the observatory using P2PP. At the observatory the OBs are exported from P2PP and then transferred to the Observatory computers which run the Visitor Observing Tool (vOT), which has the same look and feel as P2PP3, but has no support for scheduling containers. The Visitor Mode users should therefore NOT use the scheduling containers when preparing their observations with P2PP3, as this information will be lost when the OBs are transferred to vOT.

3.2 Downloading and installing P2PP

P2PP3 must be downloaded from the P2PP Web site:

<http://www.eso.org/sci/php/phase2/P2PP3Download.html>

That site provides the most updated information on the current version, supported platforms, installation instructions, and links for downloading.

You should follow the installation instructions provided on the Web page

<http://www.eso.org/sci/observing/phase2/P2PPSurveys/P2PP3Install.html>

step by step. Please pay special attention to the notes on the Local Cache; see also Section 4.1 in this Manual. It is also important that you complete the registration process at the time of downloading P2PP, as this allows ESO to keep track of the platforms in which P2PP is installed and to identify possible needs for additional platform support.

3.3 The P2PP User name and password

When the time allocation process at ESO telescopes is finalized, the Principal Investigators (PIs) receive an e-mail from ESO's Observing Programmes Office containing the URL of a Web page where the outcome of the process is described. The PIs can access that page by using their ESO User Portal username and password.

The User Portal username and password must be used to log in P2PP.

The ESO User Portal username and password are completely under the control of the user. They will work with P2PP *even if they are changed.*

In case you, as the PI of a program, have forgotten your User Portal username, password, or both, please refer to the corresponding link(s) on the ESO User Portal login page (<http://www.eso.org/UserPortal>).

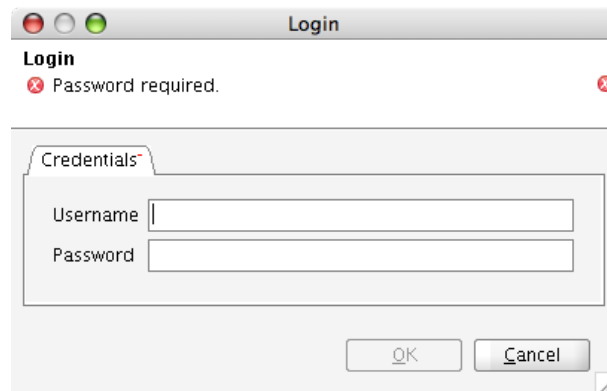


Figure 8: The P2PP login window.

3.4 Phase 2 Delegation

Starting with Phase 2 preparation for Period 90 with P2PP 3.3 it is now possible for a PI of an observing run to allow another user to create the OBS, READMEs, etc. using *their own* User Portal account by *delegating* Phase 2 preparation permission to them. This means that there is no longer a need for the PI to reveal their User Portal login credentials to anyone for this purpose.

The delegate need not be a Co-I on the proposal, but must be a registered User Portal user. Note that unlike Data Access Delegation (with which a PI can delegate data access to multiple User Portal users) Phase 2 Delegation can only be granted to one person per observing run at a time. A different person can be chosen as the delegate for different runs of the same programme. Delegating Phase 2 does not remove Phase 2 access permissions from the PI him/herself. Thus, PIs who use Phase 2 delegation are kindly asked to coordinate Phase 2 preparation between themselves and their delegate. Delegation can be viewed and administered through the Access Control ESO web page (<http://www.eso.org/ace>).

Once a user has been granted Phase 2 permissions for a run they will see the run in P2PP (with a small green check mark distinguishing it as a delegated run) after logging in *with their own credentials*.

3.5 Starting P2PP

Once you have installed P2PP, and recalled your User Portal username and password, you can start using P2PP. The first time you use P2PP after a new installation from scratch, or the first time that you use it in a previously existing installation but with a new username, you need an Internet connection. In this way, information relevant for your observing runs will be automatically downloaded from ESO and you will be able to start working on their preparation.

To start P2PP go to the bin/ directory of your P2PP3 installation and type:

```
./p2pp
```

A login window will appear (Fig. 8) prompting you for your ESO User Portal username and password. If P2PP has been successfully installed, your network connection with ESO is working, and you have approved programs in the ESO Database, you will get the main P2PP Graphical User Interface (GUI) after a few seconds. You can then start working on your runs, as described in the next Chapters.

4 A quick overview of P2PP

In this Chapter we describe some important concepts related to P2PP and its use with which you should have some familiarity before beginning to use P2PP for the preparation of your OBs. Then, we describe the main features of the P2PP version 3 Graphical User Interfaces (GUI).

4.1 The Local Cache

P2PP automatically saves all the information in your local working area as you work on your observing runs. It also stores Phase 1 information (see Section 4.2) on all your observing runs once it has been downloaded from the ESO database. The place where all this information is stored is the **Local Cache**.

By default, the Local Cache directory (cache) is created in the P2PP root directory, this is, the directory where you installed P2PP. An alternative location of the cache directory can be set by changing the keyword `CACHE.DIRECTORY` within the `config.properties` file that is created in the `config` sub-directory within the P2PP installation path. Note that multiple users with different User Portal usernames use the same Local Cache directory.

4.2 Phase 1 Information

In the process of developing an observing programme from its conception to its execution, Phase 1 corresponds to the stage of submission of the proposal that is then reviewed by the OPC. The programme is scheduled if its scientific merit is found by the OPC to be sufficiently high, if time for it is available at the telescope, and if it is technically feasible.

At the time of submitting your proposal (Phase 1) you provided ESO with some basic information that needs now to be used by P2PP. In particular,

- Your proposal was assigned a **programme ID** at the time of reaching ESO.
- Your proposal was submitted for a given **Period**.
- Your proposal contained one or more **observing runs**, each of them to be carried out with a given **instrument**.
- In your proposal you applied for observations in either **Visitor** or **Service Mode**. In some cases, the mode may have been changed by ESO with respect to your original request based on criteria of technical feasibility or schedulability.
- In your proposal you applied for observations of specific **targets**, and have requested specific observing **constraints**. This Phase 1 information is binding and any deviations from the requested targets, or instrument setup must be approved prior to Phase 2 submission (for service mode proposals) or in advance of a visitor mode run. Please refer to Phase 2 web pages for procedure how to make programme change or waiver requests.
- Finally, before the beginning of the Phase 2, an **Instrument Package** version (see Section 4.3) was assigned to each run in your proposal.

All these items (programme ID, Period, runs, instrument used in each run, mode, and instrument package versions) need to be known to P2PP at the time that you start working on the preparation of your observations. This information is downloaded from the ESO database and stored in a file in your Local Cache.

The first time that you start a P2PP session using a new installation of P2PP having a working network connection, P2PP queries the ESO Database and downloads to your Local Cache all the new Phase 1 information existing for programs defined under your User Portal username (*even if you change it*), as well as all the instrument packages needed to prepare observations for your runs. If no Phase 1 information for your username can be found in the Local Cache or downloaded from the ESO Database, P2PP will issue an error message and will not be able to continue the session.

If you do not have a network connection available, you can still use P2PP provided that you have previously downloaded the Phase 1 information for the run on which you wish to work, so that it is already available in your Local Cache. This is very convenient in case you want to prepare your OBs off-line on a laptop while traveling, for instance.

In case that there is already some Phase 1 information in your Local Cache, P2PP will not try to update it unless you explicitly want it to do so. Section 5.1 gives detailed information on how to update the Phase 1 information and section 5.6 provides instructions how to assign Phase 1 targets to OBs.

4.3 Instrument Packages

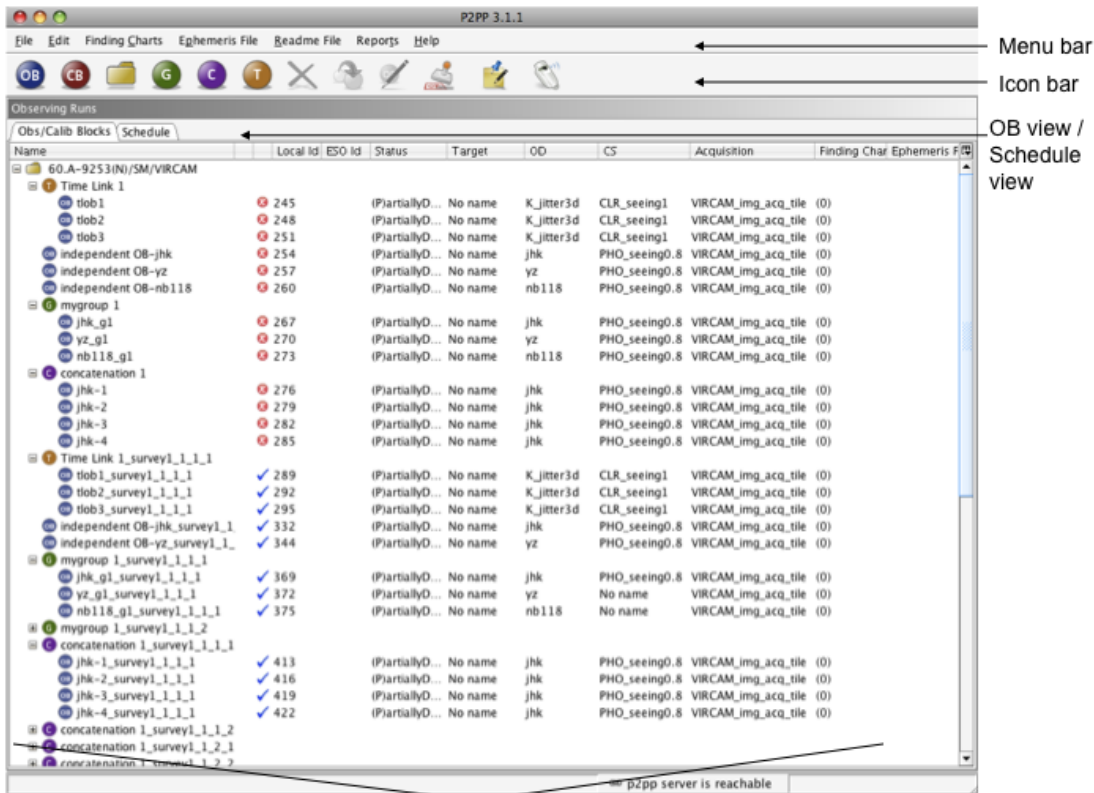
As described in Chapter 2, P2PP works both with generic information and with information that is instrument-dependent. The instrument-dependent part is contained in the so-called **Instrument Packages (IPs)**.

An IP contains all the templates (acquisition, science, calibration) that are available for a given instrument (see Section 2.2) and they need to exist in your local installation of P2PP in order for you to start preparing OBs for that instrument. More technically, an IP contains an *Instrument Summary File* with all the available optical elements and allowed ranges for each item defining the instrumental setup, and multiple *Template Signature Files* containing the list of parameters that the user should define within each template via P2PP.

The IP also contains some other instrument-specific items:

- The **External Verification Module (EVM)** checks the logical consistency of the OBs, as well as their compliance with a number of rules and policies set by the Observatory in either Service or Visitor Mode observing. The function of the EVM is described in Section 5.14.
- The **External Time Reporting Module (ETRM)** computes the total exposure and execution times of each OB (Sect. 5.9).
- The **COntstraint Set MOdule (COSMO)** contains the relevant constraints applicable to each instrument whose value needs to be specified by Service Mode users.
- The **README file definition**, containing the entries to be filled by the user in the README file, some of which are instrument-dependent (Sect. 5.15).

Each observing run has an IP associated to it in the ESO Database. At the time of downloading or updating the Phase 1 information (Sections 4.2 and 5.1), the association between each observing run and its assigned IP is updated in the Local Cache. If a run has an associated IP that is not available in your Local Cache, the correct IP is automatically downloaded and installed. By default P2PP will install the IPs in the instruments sub-directory in the P2PP root directory. An alternative location can be set by changing the keyword INSTRUMENTS.DIRECTORY in the config.properties file that is created in the config/ sub-directory within the P2PP installation path.



Folder view and OB+Containers Summary area

Figure 9: The P2PP main GUI Obs/Calib Blocks view.

4.4 The P2PP main Graphical User Interface

Once you have successfully logged into P2PP, the P2PP main GUI will be displayed in your screen. The appearance of the main P2PP GUI is similar to that shown in Figure 9.

The P2PP main GUI contains the following important areas, which are indicated in Figure 9:

- A **Menu Bar** giving access to a variety of P2PP functions, described under the corresponding Sections of this Manual.
- An **Icon Bar** with the following icons from left to right:
 1. OB icon - button used to make a new science OB
 2. CB icon - button used to make a new calibration OB
 3. Folder icon - button used to make a new folder
 4. Green G icon - button used to make a new group container; this is active only when a folder (either an observing run folder or a subfolder within the run) is selected; this is not active when another container is selected.
 5. Violet C icon - button used to make a new concatenation container; this is active only when a folder (either an observing run folder or a subfolder within the run) is selected; this is not active when another container is selected.
 6. Brown T icon - button used to make a new time link container; this is active only when a folder (either an observing run folder or a subfolder within the run) is selected; this is not active when another container is selected.

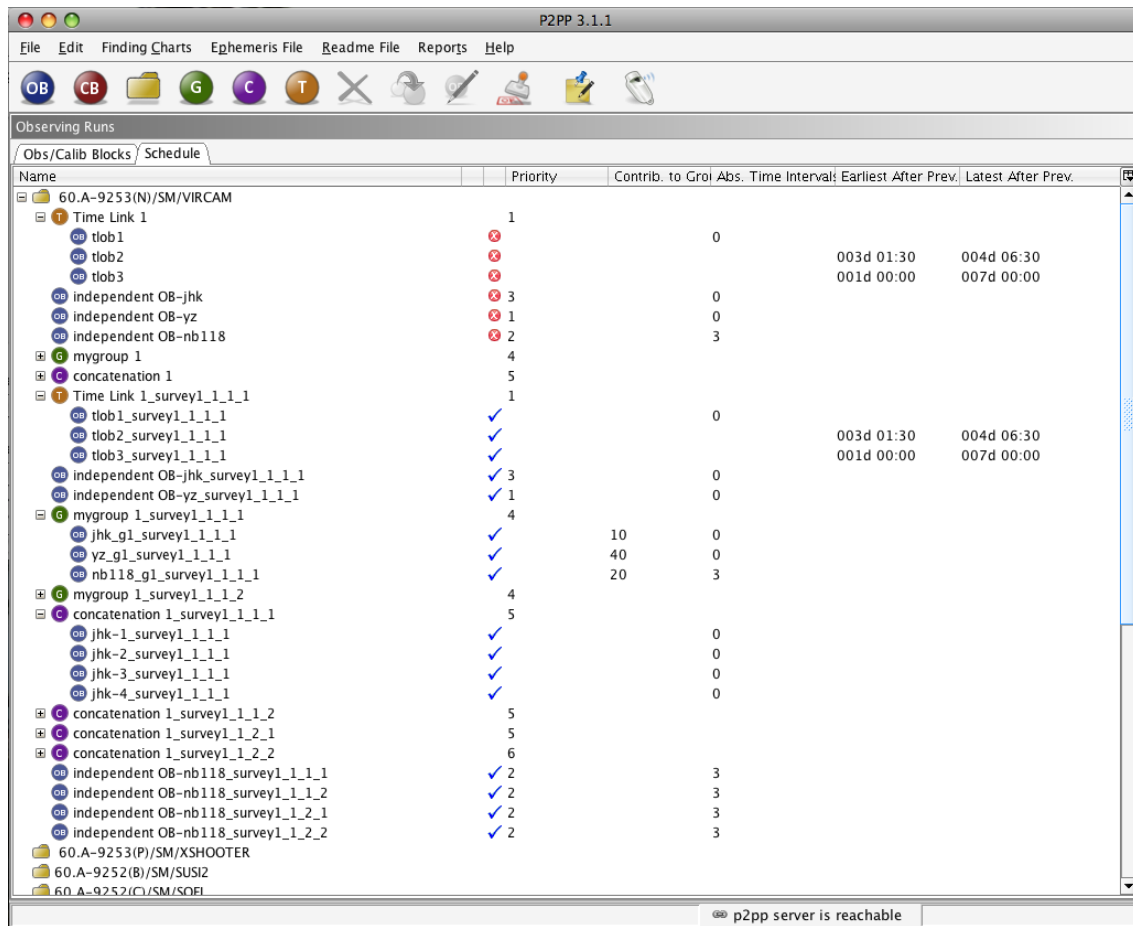


Figure 10: The P2PP main GUI Schedule view.

7. Red X icon - button used to delete the selected item.
 8. Duplicate icon - button used to duplicate an object, either an OB or a container with all its belonging OBs.
 9. Edit Observation Block icon (OB icon + a pencil) - button to view and edit the selected OB.
 10. Verify icon (a stamp) - button to verify whether the content of the selected OBs and containers is correct and follows phase 2 rules.
 11. Readme icon - button to view and edit README file.
 12. P2PP-submit icon (a whistle) - button to alert ESO that all phase 2 material has been submitted.
- A **Folders and Summary** area. There are two main views available on the main P2PP GUI window: the so-called OB view selected by clicking on the "Obs/Calib Blocks" tab, and the Schedule view selected by clicking on the "Schedule" tab. In both cases the main window displays in the left most column a list of folders with observing run IDs, information about the observing mode (Visitor Mode (VM) or Service Mode (SM)), and the instrument used for the observations for the given run. Folders can be expanded to show the tree view of OBs, containers and/or other sub-folders present in the local cache by clicking on the small "+" symbol, or collapsed by clicking on the small "-" symbol.

By default after login the **Obs/Calib Blocks** tab is selected providing the view of the run. The Folders and Summary area shows only the name for folders and containers. For the OBs, beside the name, there are also:

- an icon indicating whether the information within an OB is complete (blue tick mark), or not (red dot with a white cross)
- Local OB ID - this is an integer number
- ESO OB ID - this is the identification number assigned to the OB after its submission to the ESO repository database
- Status of the OB - this status is always at (P)artially Defined when working in the Local Cache (see Section. 6.3.2)
- Target name - target name can be changed in the target view of OB (see below)
- OD - observation description can be changed by editing the OD name field in the OB view window (see below)
- CS - constraint set name can be changed by editing the appropriate field in the Constraint set OB view window (see below)
- Acquisition - lists the name of the Acquisition template; this template is attached to the OB in the OB view window
- Finding charts - lists the number of the attached finding charts and their names
- Ephemeris file - lists the attached ephemeris file names

By clicking on the **Schedule tab** above the list of observing runs, the schedule view is displayed (Fig. 10). The schedule view lists names of all OBs and Containers and indicates in the same way as in the "Obs/Calib Blocks" view, whether the OB is complete or if there are basic parameters missing.

The function of the Schedule view is to get an overview of the User Priorities for all the OBs and scheduling containers, and to set-up the observing strategy for the run by adjusting the relative execution priority between different OBs and scheduling containers.

The User Priority value can be edited by clicking on the number in the "Priority" column. The default value is 1, but it should be changed by the user. The lower the User Priority value, the higher the priority for the execution of the given OB and/or container. The lowest priority is assigned to OBs and containers with the User Priority value of 10, and the highest priority is marked by assigning User Priority equal to 1.

The OBs belonging to Groups have the "Contribution to Group" score. This is an integer number with values from [1 MaxGrpContrib] and it is used to compute the dynamical group score and therefore assign relatively higher priority to groups of OBs whose observations have already started. For the details about the group score see Section 2.5.

The OBs belonging to the Time Link containers, that are not the first in the series, have the *relative* time constraints "Earliest After Previous" and "Latest After Previous", which can be edited in the Schedule view. The time delay is expressed in days and hh:mm format. These time constraints are relative in the sense that they refer to the time with zero point being the *start time* of the successful execution of the previous OB in the series. For the rules regarding the execution of OBs within the time link containers see Section 2.4.

When you first log into P2PP using a new installation, the Summaries area is empty since no OBs exist yet in your Local Cache. Please note that this does not necessarily mean that no OBs for your previous programmes exist in the ESO Database if you submitted them in the past! OBs that had been previously submitted to the ESO Database under your username will not be downloaded to your Local Cache, since for a number of reasons this would not be desired. The process for copying OBs from the ESO Database to your Local Cache needs to be carried out explicitly and is described in Section 6.3.1.

4.5 Exiting P2PP

To exit P2PP, select the **Exit** option under the *File* menu, and then click on **yes** in the dialog box that appears asking you to confirm your decision.

5 Creating and editing Observation Blocks and the README file

This Chapter guides you through the OB preparation step-by-step in a generic (i.e. instrument-independent) way. Some more specific steps necessary for preparation of survey OBs for VISTA and VST are described in Section 5.8.

To follow easily the explanations given in this Chapter, we recommend that you have an open P2PP session in front of you at the time of reading it and that you work on actual example OBs for one of your existing observing runs. If you have access to P2PP but do not have your User Portal username at hand, you still can do this by using the available tutorial account described in Section 1.4.

5.1 Updating the information on Observing Runs

As explained in Section 4.2, the first thing needed to start preparing your OBs is the Phase 1 information of your observing run. If you have approved observing runs but no Phase 1 information for any of them is available in your Local Cache, it will be downloaded automatically from the ESO Database. If you already have Phase 1 files in your Local Cache but wish to work on a new run that is not there yet, such as one that has just been allocated time, you need to explicitly download the Phase 1 information to your Local Cache and make it visible to P2PP. It may also be that the Instrument Package version associated to your run has changed since the last time you worked on it. For these reasons, it is convenient to start any new P2PP session by updating the Phase 1 information in your Local Cache. This is done by selecting the **Download/Refresh Observing Runs** option under the *File* menu in the P2PP main GUI. Downloading/refreshing observing runs will download all the Phase 1 information from the ESO Database into your Local Cache, overwriting any previous Phase 1 files that may exist there.

*If ESO has communicated to you the allocation of observing time to your observing run but you cannot see it in P2PP, please make sure to use the **Download/Refresh Observing Runs** option before contacting ESO.*

5.2 Creating a new OB and scheduling container

We begin from the point at which you have started a P2PP session, logged in (Section 3.5), and selected in the P2PP main GUI the folder (Section 4.4) corresponding to the observing run for which you wish to prepare the observations.

- First you have to decide if the OB that you want to create is a *Science OB* or a *Calibration Block (CB)* (Section 2.2) and whether the OB should be part of a scheduling container (Section 2.4).
- Click with the mouse to highlight the run for which you wish to create new OBs or containers. If you wish to create directly independent OBs skip the creation of containers, and go to the next item in the list.
- If the OBs is to be part of a scheduling container, create the appropriate container by clicking on the icon G (group), C (concatenation), or T (time link). This will create the new item within the run folder. To change the name of the container first click on the container to select it, and then either press **Enter**, or use **Rename** option either from the **File** menu, or from the menu available through the right-mouse button click. After typing the name press **Enter**. If you then wish to create an OB within that container, click on the container to highlight it.
- Next, create an OB by clicking on the **OB** (or CB) Icon in the Icon Bar (Figure 9). A new entry will immediately appear in the Summaries area with default information for the OB. You

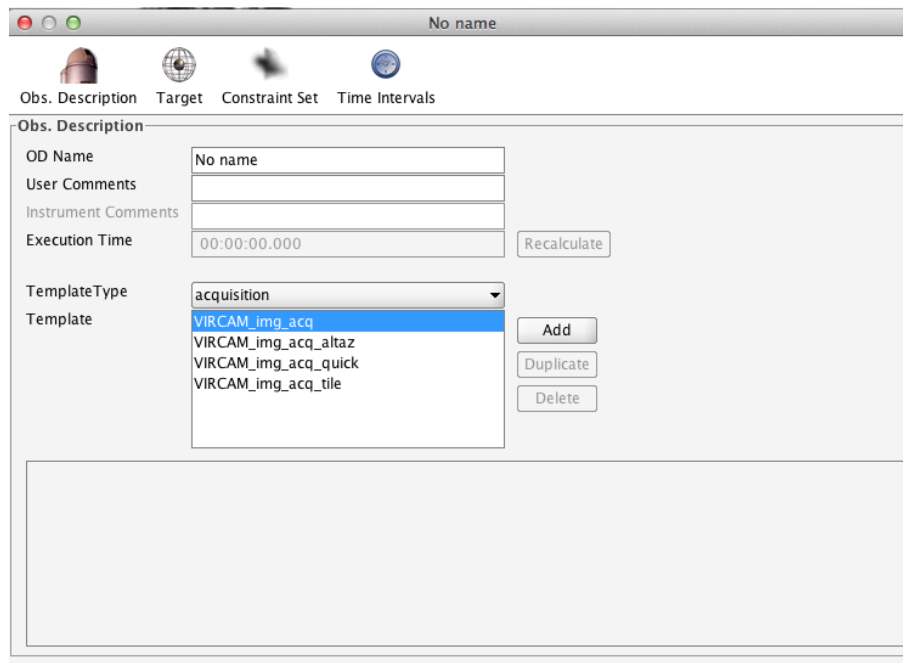


Figure 11: The View OB window as it appears for a newly created OB.

will notice a red dot next to the OB name: this means that the current content of the OB fails to pass some basic verification criteria, as it should be since the OB is still empty.

- To change the name of the OB first click on it to select it, and then, either press **Enter**, or use **Rename** option either from the **File** menu, or from the menu available through the right-mouse button click. After typing the name press **Enter**. Needless to say, it is always convenient that the chosen names are sufficiently descriptive to the user.
- To view and change the default contents of the OB, click on the **View** icon in the Icon Bar, or double-click with the left mouse button on the OB name. The **View OB** window will pop up as shown in Figure 11. The example given in this Figure corresponds to a VIRCAM run, hence the list of templates visible in the center. If you are creating an OB for a different instrument, the detailed contents of that area will differ from the one shown, although the rest of the layout will be identical.

We describe in detail how to edit information in the View OB window in Section 5.4. For now, what is important is that *every change made to the OB in the View OB window is automatically saved in your Local Cache.*

- Once you are satisfied with the contents of your OB, there is no further action required. Since changes are immediately saved in the Local Cache, you do not need to click any 'OK' or 'Confirm' buttons in order to preserve the changes made, but can simply close the window clicking on the red dot in the upper left (for Mac OS X) or on the cross in the upper right corner (for Linux OS).

You can now create a second OB by going back to the P2PP main GUI window and clicking again on the *OB* icon. If the new OB that you wish to create is similar to the previous one, you can select (highlight) the first OB and then either select **Duplicate** option from the **Edit** menu, or **Duplicate** icon in the P2PP main GUI Icon bar, and a new OB will appear in the Summaries area having an identical content as the original one, with the exception of the OB name to which a default number will be added.

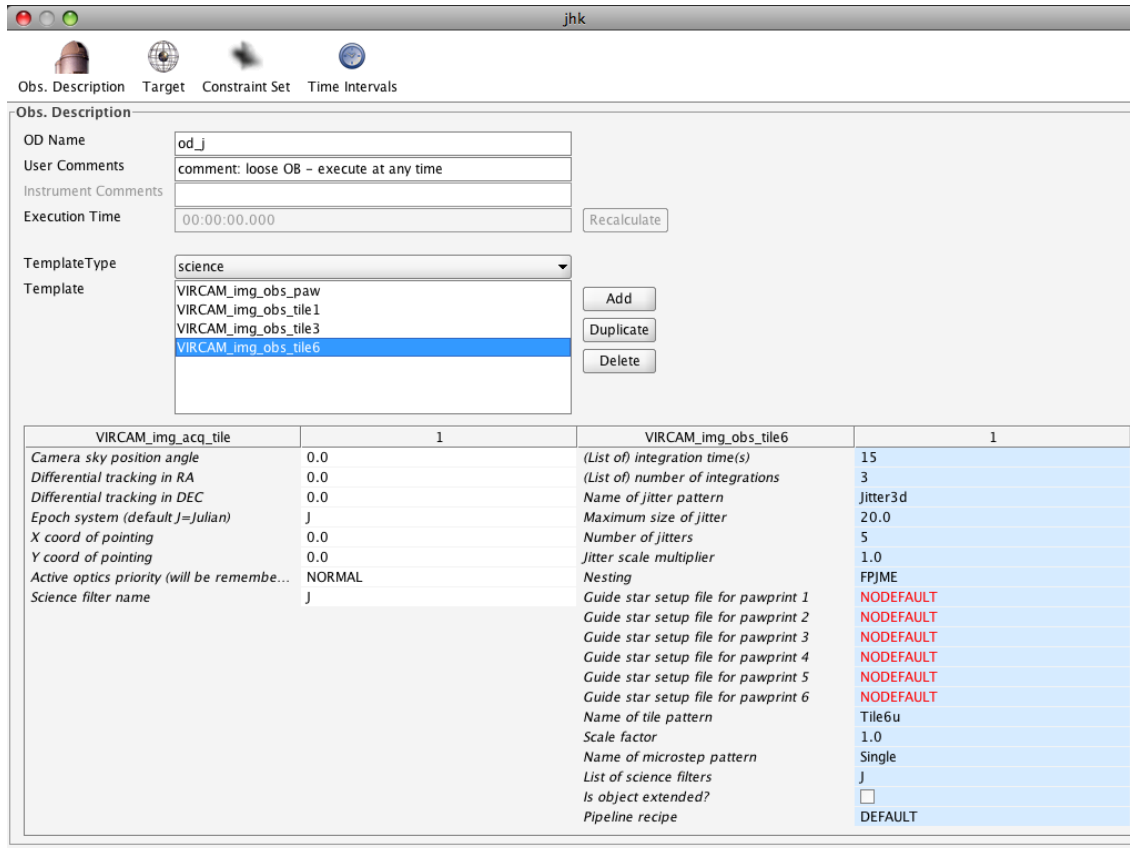


Figure 12: The View OB window with the contents of a typical OB.

Note that you can duplicate more than one OB at once by highlighting all of them and then clicking the *Duplicate* button. Copies of all the highlighted OBs will then appear in the *Summaries* area.

5.3 Subfolders

In some instances, particularly when working with observing runs consisting of a large number of targets or OBs that can be grouped under a few categories, you may find useful to separate the OBs under different **subfolders**.

Subfolders must be created under existing observing runs. You can do it by first clicking on the relevant run, and then selecting the Folder icon in the P2PP main GUI Icon bar. This will create a subfolder under the specified run.

Subfolders can be renamed in the same way as containers or OBs: first click on it to select it, and then, either press **Enter**, or use **Rename** option either from the **File** menu, or from the menu available through the right-mouse button click. After typing the name press **Enter**.

A word of caution: Working with subfolders can be confusing and may lead to the partial submission of OB sets to the ESO Database if they are not handled carefully (Section 6.1). You are therefore advised to use subfolders only if really necessary.

5.4 The View OB window

The **View OB** window is used to view or edit the contents of an OB. Its parts are indicated in Figures 12, 13, 14, and 15 for the case of a Science OB.

The **Icon Bar** at the top gives access to information about the Observation Description (the default view when opening a newly created OB), about the Target, Constraint Set, and Time intervals. Clicking on these icons changes the content of the **View OB** window.

The View OB window for calibration OBs is somewhat simpler, as the target information and execution conditions are not needed in that case. It only contains the information about the Observation Description. There is no target, constraint set, nor time intervals icon.

5.4.1 Observation Description view

The Observation Description view of the OB is the default for the newly created OBs (Fig. 12). It can be displayed by clicking on the Observation Description icon in the upper left (telescope dome symbol). Below the Icon Bar, in the Observation Description view there are the following fields:

- OD Name - the name of the Observation Description (see Section 2.2 and Figure 1) can only be changed in this View OB window.
- User Comments - free text field for user comments; please always use the User Comment field in the observation of calibration sources to indicate the science OBs that they are intended to calibrate.
- Instrument Comments - this field is active only for some instruments which require instrument-specific information.
- Execution time - this field can be updated by clicking on the *Recalculate* button next to it in order to obtain the estimate of the total execution time including the overheads (see the corresponding instrument User Manuals).
- The **Template** area displays all the templates available for the instrument, grouped by template types. Template types are selected from the pull-down menu. There are typically acquisition, science, and calibration templates.
- The **Acquisition Template and Observation Description** grid in the bottom displays all the templates that have been selected to compose the present OBs, with all their user-selected parameters visible.

5.4.2 Templates

To define a valid OB, executable at the telescope, the OB must have a certain set of templates.

- In general, for a science OB you should begin by selecting the acquisition template appropriate to the instrument mode that you wish to use; please consult the User Manual of the instrument if you are unsure of which template to choose. Each science OB must contain one, and only one, acquisition template.

To include the desired acquisition template in the OB, go to the Template Menu area and, under the pull-down menu *Template Type*, select **acquisition**. This will display in the *Template* box all the acquisition templates available for the instrument. Select the one to be used for this OB by clicking on it, and then click on the **Add** button. Below the Template box, a column with the list of parameters that need to be edited will appear, followed by another column with the default values for these parameters. Editing is done by either clicking on the corresponding box, deleting its content and replacing it by the correct one (such is the case for example for the exposure time of the acquisition image), by choosing a value/item in the drop-down menu

that appears when clicking in the entry (for example to choose filters or grisms from a list), by clicking on the entry to get a box in which more items can be added in a list, or by ticking on a checkbox (such as 'PSF Ref' for NACO). Values appearing in red characters are not allowed, and must be changed to a permitted one before the OB can be considered acceptable.

- The acquisition template must be followed by one or more science or calibration templates. The selection of the science and calibration templates that compose the Observation Description is made in a way analogous to the selection of the acquisition template, choosing the desired template after having clicked on the pull-down menu and selected the corresponding template type in order to display the possible choices. Once selected, the template must be appended to the OB by means of the **Add** button as before.

As explained in Section 2.3, calibration templates may include observations of standard stars. Unfortunately, at present and for historical reasons different instruments handle the observation of calibration sources in somewhat different ways. For example, ISAAC, NACO, CRIRES, and UVES have dedicated templates for the observation of standard stars that can be found under the `calib` template type, while FORS1, FORS2, and VIMOS use the same templates for the observations of both science targets and calibration stars and the difference is made by selecting a flag within the template (see the corresponding User Manuals for more details).

Besides the **Add** button, two other buttons in the template menu are useful to speed up the process of building OBs and to fix possible mistakes:

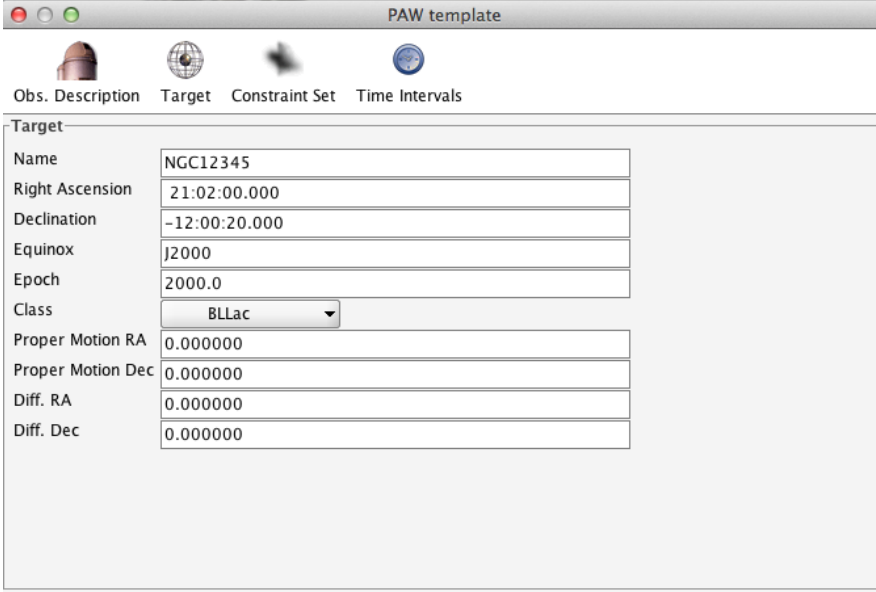
- The **Delete** button next to the Template box deletes a template that has been previously attached to the OB. To use it, first click on any entry of the template that you want to delete. The whole column with all parameters belonging this template will be highlighted. Make sure that this is indeed the the column that you want to delete, since template deletions are not reversible. Once you have checked this, you can click on the *Delete* button and the template will disappear from the grid.
- The **Duplicate** button allows you to duplicate a template already appended to the OB. This is useful when your OB must contain a succession of similar templates differing only in the values of a few of their parameters, such as for instance a succession of exposures using similar instrumental configurations and differing only in the filter. Also in this case, you must click on any entry of the template to be duplicated to select it, and highlight the column. Clicking on the Duplicate button will create a new column immediately following the one selected for duplication and with identical contents. The parameter values of the new template can then be modified as needed.

The **Recalculate** button allows to calculate or update the estimated execution time of the OB after any changes in its templates has been introduced. Please see Section 5.9 for further details.

If your OB contains contiguous executions of the same template with only the parameter values changing from a template to the next, the column in the grid listing the parameters will appear only in front of the first template.

If you want to change the order of templates within the Observation Description, it is possible to move a template to any new position within the OB just by clicking on the heading of the column of values of the template that you want to move, and dragging it to its desired location within the OB.

Important note: As noted in Section 2.3, some instruments (e.g. ISAAC, UVES, NACO, VIMOS) allow attached calibration templates such as flat field and wavelength calibration frames in order to increase the accuracy of the calibration. In all cases, **the attached calibration templates must be located after the science template that produce the observations that they intend**



Target	
Name	NGC12345
Right Ascension	21:02:00.000
Declination	-12:00:20.000
Equinox	J2000
Epoch	2000.0
Class	BLLac
Proper Motion RA	0.000000
Proper Motion Dec	0.000000
Diff. RA	0.000000
Diff. Dec	0.000000

Figure 13: The Target View OB window with the target information.

to calibrate, since they inherit the same instrument configuration as the latest science template executed.

5.4.3 Target View

The Target view of the OB (Fig. 13) is displayed by clicking on the Target icon in the View OB window. Below the Icon Bar the Target View displays a series of fields, where the positional and kinematic information of the target can be entered.

To complete the OB you need to enter the target information including the target name, its position, its proper motion and, in case of a moving target, the differential motion in Right Ascension and Declination, called respectively 'Diff RA' and 'Diff Dec' in P2PP. Please note the distinction between proper motion and differential motion: the former applies typically to stars and stellar objects, and the latter to Solar System objects. Proper motions must be introduced in units of arcseconds per year, and differential motions in arcseconds per second. More information on the preparation of OBs for the observation of Solar System targets in Service Mode can be found in Section 7.8. Finally, you may also select the type of target from an extensive drop-down menu (*Class* field). This latter information may be used in future archive searches.

Special note for Survey users: the target information is entered by importing the output of the SADT (see Section 5.8). **Do not change the target coordinates manually in OBs in which SADT output file was imported!**

5.4.4 Constraint Set View

The Constraint Set View OB window (Fig. 14) is displayed by clicking on the Constraint Set icon in the View OB window. Below the Icon Bar, in the Constraint set view there is a series of clickable fields and pull-down menu for Sky Transparency, where the information of the acceptable observation constraints for the OB execution are specified.

In OBs intended to be executed in Service Mode, you must complete the entries under the **Constraint Set** view. Here you specify the least favorable conditions under which your OB can be executed and

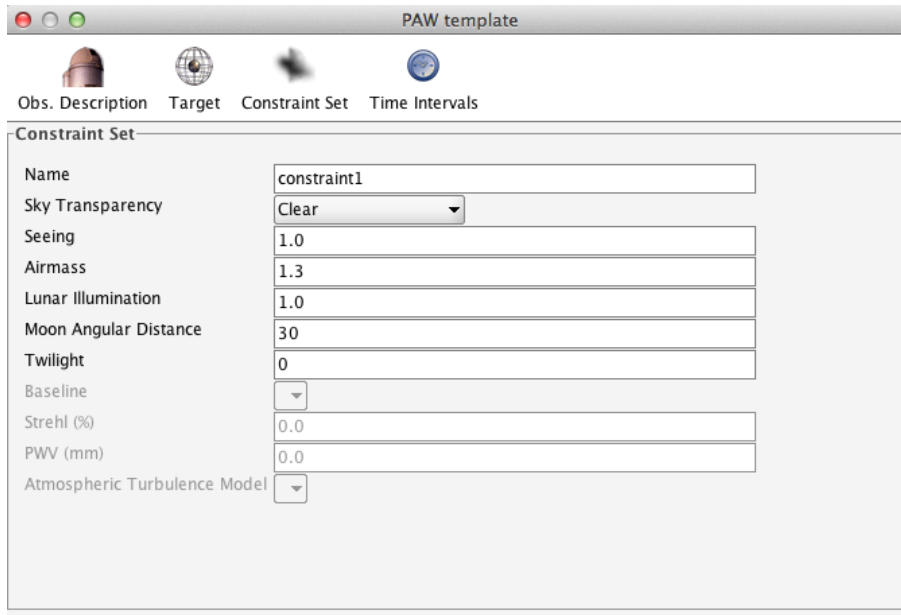


Figure 14: The Constraint Set View OB window with the information about the observational constraints for the OB.

still produce a useful scientific output. The OB will then be scheduled for execution when the seeing, the lunar illumination, and the airmass are equal or smaller than the specified values, the Moon angular distance greater, and the transparency conditions equal or better than specified.

A new *Twilight* constraint has been introduced in P2PP version 3.1.4 and is available for several instruments. This constraint can be used to define the earliest time with respect to the end of the astronomical twilight when the execution of the OB can be started. While the relation between the time difference from the evening twilight end and sun elevation varies during the year, for Paranal due to its low latitude this difference is small. Therefore the constraint is given in minutes as a difference in time with respect to the end of astronomical twilight (i.e. the time when the solar elevation is -18 degrees). The default value of twilight constraint is 0. A negative number means that it is allowed to start the observation before the end of the astronomical twilight, a positive number means start the observation at least that many minutes after the end of the astronomical twilight.

In P2PP version 3.3 the following instrument specific constraints are supported in addition:

- baseline - used by VLTI instruments
- Strehl - used to assess the quality of observations using adaptive optics (AO)
- ATM (atmospheric turbulence model) used to denote whether AO is used or not;
- PWV (precipitable water vapor) - used by instruments operating in mid-IR

Additional information on these constraints are provided in the instruments User Manuals and Phase 2 web pages.

5.4.5 Time Intervals View

The Time Intervals View OB window (Fig. 15) is displayed by clicking on the Time Intervals icon, in the View OB window. Below the Icon Bar, in the Time Intervals view there are two tabs: Time intervals, and Sideral Time intervals.

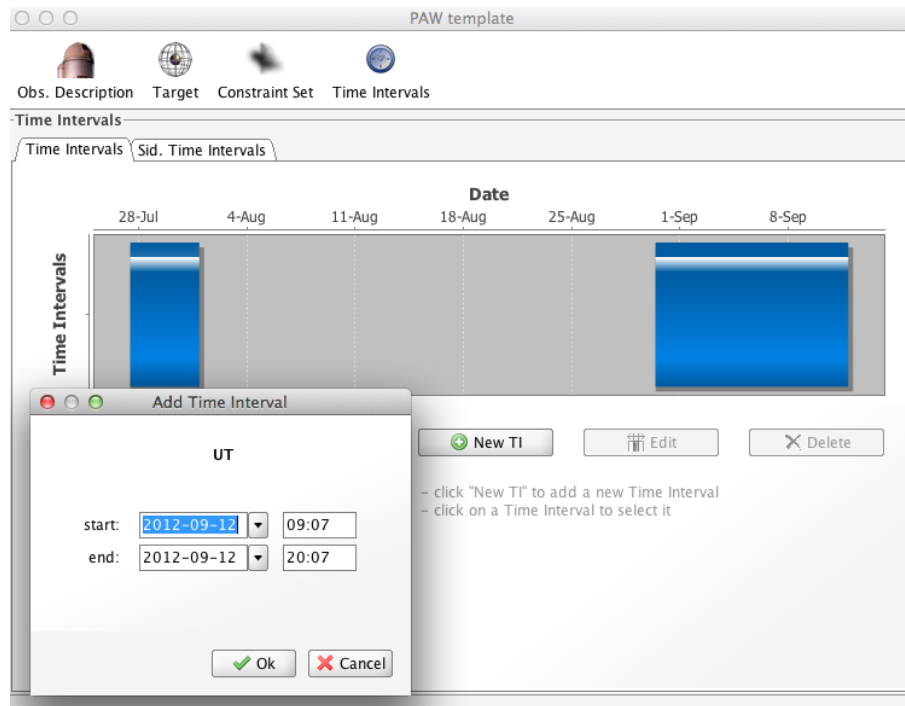


Figure 15: The Time Intervals View OB window with the information about possible absolute time windows for the OB execution.

If your OB is time-critical, i.e. it has to be executed within some specific time interval(s), you must specify the intervals of dates and times suitable for execution under the **Time Interval** tab of the Time interval view. Here it is only possible to specify absolute time intervals, i.e., fixed dates when your observations are feasible.

To add a new time interval click on *New TI* button. This will open a small pop-up window in which Start and End date and time can be chosen. Either click inside the field where the date appears to type the desired Start/End Date, or click on the arrow next to the date to get a window with a calendar. In the calendar window click on the date to select it. To navigate to another month use arrows on top of the calendar view. To change the Start/End time, click inside the field with hh:mm format to type desired time. Finally, press OK button to confirm the choice. The new time interval is then shown as a blue bar in the time intervals graphical overview.

It is also possible to edit and delete some existing time intervals. This is done by first selecting the time interval through clicking on it with left mouse button - the selected time interval will be highlighted (orange) - and then pressing either *Edit* or *Delete* button. The *Edit* button will pop-up again the small window in which the Start/End Date and Time can be changed in the same way as described above for adding a new time interval.

The time intervals that depend on the execution of other OBs, such as “OB number 2 must be executed between 5 and 10 days after OB number 1”, must be specified in the P2PP main GUI *Schedule view* (Figure 10 and Section 4.4). These relative time links are possible only for the OBs that belong to a Time Link scheduling container. As described in Section 5 to create the OBs within the time link container, first select the Observing run folder, then create the time link container by clicking on the T icon in the icon bar, then select the time link container by clicking on it with the left mouse button, and then click OB icon to create OBs within that time link container. For OB name changes and editing of parameters see above.

Important note: Only the first OB within a Time Link scheduling container can have absolute time constraints for its execution. All subsequent OBs in a time-linked sequence within a time link

scheduling container do not have the *Time Intervals View OB window* and the *Time Intervals* icon is not present among icons on the top Icon bar of the View OB window.

The **Sidereal Time** tab applies principally to observations with VLTI instruments, in which observations at precisely defined sidereal time intervals are needed in order to provide an adequate *w* plane coverage. VLTI users should specify in this area the list of sidereal times intervals in which their observations can be carried out. In P2PP3 this tab is activated for all instruments. Please contact usd-help@eso.org if in doubt if this should be used.

One specific restriction for the use of **Sidereal Time** constraints for *Concatenations of OBs* must be observed. Given that the concatenated OBs must be observed back-to back without any other observation in between, all the OBs belonging to a concatenation must have overlapping sidereal time intervals. If ST interval(s) for one or more OBs does not overlap with at least some of the OBs in the concatenation the concatenation will not be considered as valid for service mode scheduling.

5.5 Modifying an existing OB

The steps to be followed to modify an OB already existing under the folder for your observing run are very similar to the ones described in the previous Section. In the P2PP main GUI, highlight the OB whose contents you wish to modify by clicking on it. To view its contents either double-click with the left mouse button, or click on the *Edit Observation Block* icon to display the *View OB* window. The contents of the OB can then be changed as needed in the *View OB* window, and the changes will be instantly saved to the Local Cache.

5.6 Assigning Phase 1 Targets to OBs

In the creation of the set of OBs for your run, you can take advantage of the information that you already provided in the target list of your Phase 1 proposal. The names and coordinates of the targets are stored by ESO in a database that is accessible from P2PP, from where they can be copied and pasted into the OB.

To access the Phase 1 target coordinates select one or several OB and then right mouse button click to *Assign Phase 1 Target*. This will open a new window with the list of targets associated with the run for for which you are preparing the OBs. Select with the left mouse button the target to update the OB coordinates and the target name.

Please pay attention that the target name can only contain allowed characters: letters, digits, space, +, -, or a dot ("."). If in the proposal the target name had some other characters (e.g. "\$" to denote mathematical symbols in LaTeX), then you will need to update the target name.

Alternatively to assigning Phase 1 target to several OBs at once, you may assign it to one OB, and then use the copy-paste OB properties option described in Sect. 5.11. Please note that it is not possible to copy more than one target at a time using this mechanism, although you can copy one target to multiple OBs.

5.7 Importing external lists of targets

In case you wish to produce many similar OBs, for which only target information is different, it is convenient to use the *Import Target List* option under the *File* menu in the P2PP main GUI.

First prepare an OB (so-called master OB) that contains the instrument setup, and all the other parameters, except target information. Highlight this master OB and select the *Import Target List* option under the *File* menu in the P2PP main GUI. A window will pop up allowing you to navigate

your local folders and select the appropriate file. After selecting the file containing a target list in ascii format, press the **open** button to automatically replicate the master OB into as many copies as targets there are in the file, assigning a different target to each new copy.

The ASCII file with the targets list must contain one target per line, and the following information must be given for each target:

- The **target name**, which can consist of nearly any combination of characters, numbers, and spaces. However, special characters such as ', ", or /, should be avoided.
- The **Right Ascension** in hours, minutes, and seconds format. Hours, minutes, and seconds can be separated either by colons (hh:mm:ss) or by spaces (hh mm ss).
- The **Declination** in sign, degrees, minutes, and seconds format. Degrees, minutes, and seconds can be separated either by colons (+dd:mm:ss) or by spaces (+dd mm ss).
- The **Equinox**, expressed just as the year (e.g. 2000) or specifying the year's reference (Julian or Besselian, e.g., J2000 or B1950).
- The **Proper motion in right ascension** ($\mu_\alpha \cos \delta$), in arcseconds per year.
- The **Proper motion in declination**, in arcseconds per year.
- The **Epoch** of the coordinates.

These items must be separated by tab characters, rather than by spaces, so that the format can be considered valid. Note also that the format conventions are somewhat rigid at the moment: no blank spaces are accepted in front of the values, and the year indicating the equinox must be an integer number (2000.0 or J2000.0 will not be accepted). On the other hand, all the seven items listed above must be given for each object. The following example file contains a sample where the target data are given in several valid formats:

```
Sz100 16 08 25.8 -39 06 01 J2000 +0.100 -0.231 2013.5
Sz102 16 08 29.7 -39 03 11 J2000 +0.108 -0.211 2013.5
Sz108A 16 08 42.7 -39 06 17 J2000 +0.132 -0.200 2013.5
Sz108B 16:08:42.8 -39:06:14.3 J2000 +0.087 -0.198 2013.5
Sz113 16 08 57 -39 02 22 2000 +0.089 -0.289 2013.5
Meritxell Sala 16 06 07 -39 00 19 B1950 +0.201 -0.208 2013.5
Par-Lup3 1 16 08 15.9 -39 03 01 J2000 +0.132 -0.253 2013.5
```

Importing a target list will duplicate the selected OB as many times as the number of targets in the imported file. The procedure to use the mechanism is as follows:

Please note that only one master OB can be selected for target list import at a time. If you wish to observe the same set of targets using several OBs on each of them, you must prepare a corresponding number of master OBs and repeat the operation described for each of the master OBs, or alternatively use a duplicate OB button.

5.8 Import Survey Definition

This section is specific to the survey observation preparation that uses the Survey Area Definition Tool (SADT) to define the coordinates and offset positions for the area(s) of the sky to be observed.

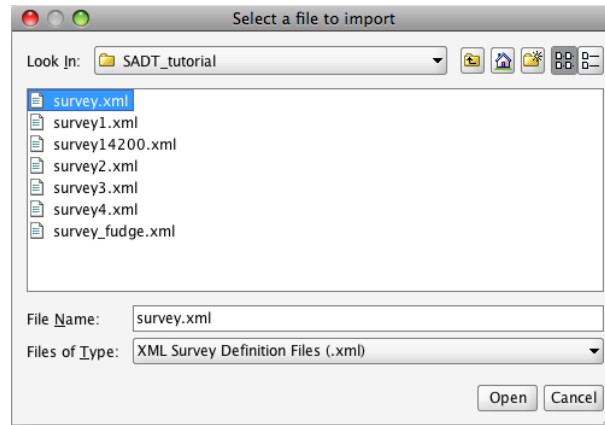


Figure 16: The *Import Survey Definition* window.

The user may define a “template” observing strategy composed of independent OBs or a more complex hierarchy of scheduling containers (group, concatenation, time link). All the parameters of the OBs in this template must be filled in. This includes setting the User Priorities, contribution to group, and time intervals, as applicable, in the Schedule view of the P2PP main window (Figure 10 and Section 4.4), opening the *View OB* window and selecting the appropriate acquisition and observation templates, constraint set and time intervals.

The difference with respect to “standard” OB creation is that, for the OBs within this template structure, coordinates of the target fields and the *Guide star setup files for pawprints 1-n* (.paf files) in VIRCAM science templates are not attached. All the other parameters, filters, execution times, offset patterns, etc. have to be defined.

An OB prepared in such a way is called *template OB*. Several template OBs belonging to a container are called *template container*. These template structures are basic survey units: they will be duplicated as many times as there are single unit areas of the survey (in survey jargon this unit of area is called tile), defined in the SADT. The template OBs have a red dot next to them, indicating that they are not complete - this is due to the fact that the information about the guide stars (.paf files) is missing.

To update the template OB with the target and .paf files for each survey tile select the template OB and then **Import Survey Definition** from the **File** menu in the main P2PP GUI. This will open a dialog window (Fig. 16), where one can navigate to the directory where the files produced by the SADT are located. These files are in .xml format. Select the appropriate file with the mouse and click *Open*. After that, confirm the selection in the next dialogue window. This dialogue window tells how many times the selected template OB or template scheduling container will be replicated - this is equal to the number of tiles (number of different telescope pointings).

After answering *yes* to confirm the selection, the template OB is multiplied and updated with the appropriate coordinates in the target section and .paf files in the observation template section. This creates completed OBs (provided that all other parameters have been set correctly) - they have a blue tick next to them indicating that the basic requirements are all satisfied. The names of the newly created OBs are equal to the name of the template OB with the extension that refers to the name of the .xml file, and incremental counters.

In the above example, a series of identical OBs, each pointing to a different part of the sky has been defined.

If instead of a single OB, the template structure is a template container containing several template OBs, it is possible to either import the SADT file at the container level, or at the level of individual OBs.

If you select a template container (e.g. group), and import the SADT file, the container will be replicated N times (where N is the number of tiles in the .xml file) and its template OBs will be updated with the coordinates and .paf files. This will result in N groups. Each group will have the same number of OBs as the template group, and all the OBs in a single group will have the same coordinates. The i-th (where i=1...N) group will have the coordinates of the i-th tile from the .xml file.

5.9 OB Reports and execution times

Once a set of OBs has been defined, it may be convenient to produce different kinds of reports on them without having to view their contents one by one in the *View OB* window. P2PP gives access to five kinds of reports from the *Reports* menu of the P2PP main GUI:

- The **Compare OB** report allows to compare the contents of two selected OBs and highlight their differences.
- The **Execution Time** report creates a pop-up window listing both the exposure time and the estimated execution time for the selected OBs. The latter include an estimate of all the operational overheads. Also included at the end of the report is the sum of the exposure and execution time for all the selected OBs.

The execution time of an OB is also visible in the *Execution Time* entry on *Observation Description View OB* window. It is important to note that *the execution time is not automatically updated in this box whenever a change in the OB is made!* Updating is easily done by clicking on the *Recalculate* button on the right of the Execution Time box, which refreshes the contents of the the box.

- The **OB Breakdown** report creates a pop-up window with the list of all the parameters and values of each selected OB as a plain text file.
- The **Verify** report creates a pop-up window listing the result of the check done by the EVM, the verification script described in detail in Section 5.14. This report can also be obtained by clicking on the Verify icon (stamp) located in the Icon bar on top of the main P2PP GUI.
- The last report, **Display in OBD (PAF) format**, produces a plain text file with the list of all parameters and values of selected OBs in a format that is used by BOB.

5.9.1 Checking the expected execution time against the time allocated to your run

The **Execution Time** report is especially useful. In *Visitor Mode* it allows you to have a fairly accurate estimate of the time actually needed for the execution of your programme, including the overheads, and thus allows you to predict if your observing plans based on the OBs that you have prepared will fit in the nights that were assigned to you.

In *Service Mode*, the time allocated to your programme includes the average operational overheads as described in detail in the User Manual of each instrument. These are the same overheads that P2PP includes in the calculation of the execution time. Therefore, the execution time report produced by P2PP gives you the amount of time that must be checked against the time allocated to your observing run. Before submitting your Service Mode OBs (see Section 6.1), *please check that the total execution time, reported by P2PP, is within the limit of the time allocated to your run.*

In addition, as specified in the Service Mode Guidelines Web pages,

<http://www.eso.org/sci/observing/phase2/SMGuidelines/SMRules.html>,

Service Mode OBs and concatenations of OBs cannot normally exceed one hour of execution time, unless a special waiver has been granted by ESO. The execution time report allows you to quickly check if any of your OBs or concatenations exceeds this limit.

5.10 Finding charts and ephemeris files

Finding charts and ephemeris files for Service Mode runs must be submitted to the ESO Database as a part of the OBs to which they belong. Visitor Mode observers may also use the finding chart and ephemeris file facilities in P2PP for convenience during their observing runs.

Exceptionally, public surveys with VISTA and VST do not require finding charts.

5.10.1 Generic finding chart requirements

Finding charts for use in Service Mode must be prepared in JPEG format following a set of generic requirements that are described under

<http://www.eso.org/sci/observing/phase2/SMGuidelines/FindingCharts.html>

There are also instrument-dependent requirements on the finding charts that can be found by selecting the instrument from the pull-down instrument selector menu in the upper right of this web page.

Any software that produces JPEG files of sufficient quality and compliant with the requirements indicated above can be used to produce finding charts. In particular, ESO distributes the Skycat-based finding chart tool, which provides a user-friendly interface for easily creating Service Mode compliant finding charts in JPEG format starting from FITS files. This tool is distributed as part of the FIMS, VMMPs, and GUIDECAM packages, but can be used also for the preparation of finding charts for any instrument. It can be found under

<http://www.eso.org/sci/observing/phase2/SMGuidelines/FindingCharts/FindingChartsCookbook.html>

Please note that the size of the JPEG files that can be submitted as finding charts is limited to a maximum of 1 Mbyte.

5.10.2 Ephemeris file requirements

Ephemeris files are plain ASCII files containing the positions and differential motions of moving targets at given dates. The detailed requirements on the contents of ephemeris files for Service Mode runs can be found under

<http://www.eso.org/sci/observing/phase2/SMSpecial/MovingTargets.html>

5.10.3 Attaching finding charts

Once you have created the JPEG files to be used as finding charts you must attach them to the relevant OBs. To do this follow the steps:

- Highlight in the Summaries area of the P2PP main GUI the OBs to which a given finding chart, or set of finding charts, must be attached.
- Select *Attach Finding Chart(s)* option from the **Finding Charts** menu of the P2PP main GUI. A window like the one in Figure 17 will appear.
- From the *Look In* pull-down menu on the top, navigate to the directory where the JPEG finding charts files to be attached are found.

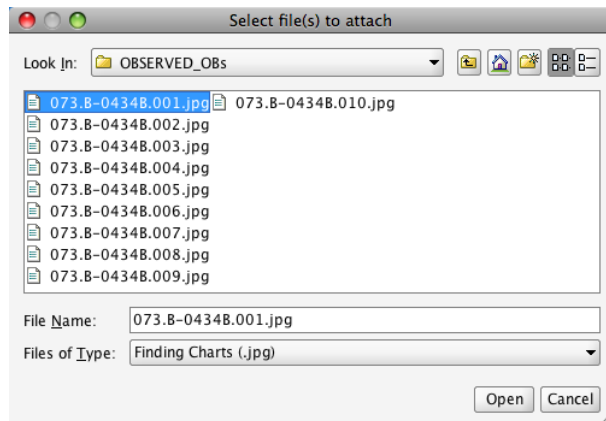


Figure 17: The *Attach Finding Chart* window.

- Select the desired finding charts from the list of files in the selected directory. It is possible to attach more than one finding chart at a time. It is also possible to enter the name of the desired finding chart directly in the *File Name* entry near the bottom of the window. You do not need to attach all the finding charts for a given OB at once: more finding charts can be added at a later time.
- Click on **Open** button to attach the selected finding charts to the highlighted OBs.

The attached finding charts now appear under the *FindingCharts* column in the *Summaries* grid of the P2PP main GUI, listed with the name of the JPEG file. Since several finding charts may be attached to a given OB and the file names can be long, the number of finding charts attached to each OB is displayed in parentheses at the beginning of the entry.

The *Finding Charts* menu also allows you to *Detach Finding Charts* associated to an OB. A pop-up menu presents the list of attached finding charts, from where the ones to be detached can be selected.

The *Clear Finding Charts* option detaches all the finding charts associated to an OB at once. Note that at present it is not possible to detach finding charts from more than one OB at a time, even if multiple OBs are selected in the P2PP main GUI.

The *Finding Charts View* option displays a window with the image of the finding charts attached to an OB. The **Next** and **Previous** buttons at the bottom allows you to navigate among the finding charts if there is more than one.

The Finding Charts View displays the finding charts as they will be visible to the observer, and is thus extremely useful to judge on their readability. Users are thus strongly encouraged to use this facility to verify that the provided finding charts are of sufficient quality before submitting them!

It is important to note that, once attached, the contents of the finding charts become a part of the OB, and the file that was attached is not used anymore. A consequence of this is that, if a new JPEG file is produced with different content but with the same name, the content will not be transferred to the OB unless the finding chart is detached and attached again.

A step-by-step tutorial on the attachment of finding charts to OBs is available at:

<http://www.eso.org/sci/observing/phase2/P2PPSurveys/P2PP3Documentation.html>

5.10.4 Attaching ephemeris files

The attachment of ephemeris files to OBs follows steps entirely analogous to those described in the previous Section for the finding charts, using the options available under the menu **Ephemeris files**

in the P2PP main GUI. The procedure to detach an ephemeris file from an OB to which it has been previously attached is also analogous. A simple ephemeris file viewing facility, displaying the content of the ASCII file, is available under the **View Ephemeris File** option under the **Ephemeris Files** menu.

Please note that, unlike for finding charts, only *one* ephemeris file can be attached to a given OB. Like in the case of the finding charts, once an ephemeris file has been attached to an OB its name will appear under the corresponding column in the *Summaries* area of the P2PP main GUI.

Finally, also in the case of ephemeris files their contents become a part of the OB once attached. As a consequence, if a new ephemeris file is produced with different content but with the same name, the content will not be transferred to the OB unless the ephemeris file is detached and attached again.

5.11 Copying and pasting information among OBs: the OB properties option

In previous Sections we have described how to create and modify individual OBs, and how to speed up the process of creating the set of OBs for an observing run by duplicating entire OBs. It is also possible however to copy information on specific parts of an OB into another OB or group of OBs by means of the **OB properties copy-paste** mechanism available through the *OB properties* option in the *Edit* menu of the main P2PP GUI.

The *OB properties copy-paste* mechanism allows one to select the *Observation Description*, the *Acquisition Template*, the *Target information*, the *Constraint Set*, the *Finding Charts*, the *Time Intervals*, or the *Sidereal Time Intervals*, as well as *Instrument Comments*, and *User Comments* from a particular OB and to replace them in one or more destination OBs.

Let us assume in the following example that your observing run contains 15 OBs, consisting of the observation of 3 targets in 5 different instrument setups that are identical for the 3 targets. You have defined OBs in each setup for the first target, and now you need to produce two additional sets of OBs identical to the ones that you have produced but having different target information. In principle, you can do this by duplicating the first set of OBs twice, then editing the target information fields in each OB to introduce the name and coordinates of the second or the third target as needed. In this way, you would have to type the target information for the second and the third target five times, one for each OB. The *OB properties copy-paste* mechanism allows you to save time and to minimize the chances of typing mistakes by letting you type the target information only once for each target, and then copying it to other OBs as needed.

To do this in the example outlined above, you can first duplicate the five OBs that contain each of the setups to be used, and in one of the copies you can replace the information on the first target by that of the second target. Then, under the **Edit** menu in the main P2PP GUI window, select the **OB Properties** and then **Copy Target** option. Next, go to the *Summaries* grid under the P2PP main GUI and highlight the rest of the OBs that were duplicated and in which the target information needs to be replaced. Under the **Edit** menu in the P2PP main GUI, select again **OB Properties** and then **Paste to Selected OBs**. This will copy the new target information to the highlighted OBs. The preparation of the set of OBs for the third target can be carried out in an analogous way.

As an alternative to using copy and paste options under **OB Properties** within the **Edit** menu in the main P2PP GUI, the same set of options is available through selecting **OB Properties** after clicking with a right mouse button.

As explained at the beginning of this Section, other items of an OB can also be copied and pasted to another OB or set of OBs. Typical examples in which this mechanism is useful may be for instance when you decide to replace a grism by another one in a group of OBs with the same instrumental setup, or when you change the transparency conditions acceptable in the execution of a Service Mode programme, or when you realize that a slightly different slit width may be more adequate than the

one that you initially set in your OBs, or when you decide to attach the same finding chart to a group of OBs sharing the same target. In the first of these examples, the *OB properties copy-paste* mechanism would apply to the Observation Description; in the second, to the Constraint Set; in the third, both to the Acquisition Template and to the Observation Description, since the slit width normally must be specified in both; and in the third, to the Finding Charts.

Important note: In OBs that contain attached .paf files the use of copy-paste of OB properties has to be done with extreme care. For example in case of OBs for VIRCAM survey observations with VISTA it is possible to copy target from one OB to another OB which has attached .paf files with guide stars and AO stars that are located in a different part of the sky. Clearly such OBs would fail at the telescope. Therefore it is advised NOT to use copy-paste of Observation Description and Target OB properties between OBs that have attached .PAF files.

5.11.1 Copy-paste of OBs belonging to different observing runs

The *copy-paste* mechanism also facilitates copying information across OBs belonging to different runs. Common examples in which this capability may be useful is when adapting OBs from a run that used similar setups or targets in a past period, or when multi-run programs with the same instrument in a given period use similar OBs.

The procedure to synchronize information from OBs belonging to different runs is very similar to the one described in the previous Section, with the caveat that the different runs are under different folders in the *Folders* area of the P2PP main GUI. Thus, you need to first select the folder corresponding to the program that contains the OB from which you want to copy the information, then select the OB information to be copied, and then select the folder corresponding to the program containing the target OBs where the information can then be pasted.

Only instrument independent components of the OB (target package, finding charts, and time intervals) can be synchronized among OBs belonging to different runs.

To copy the whole OBs with all their content from one run to another, simply highlight one or more OBs in the folder of one run and then after selecting **Copy** option from the **Edit** menu from the P2PP main GUI (or from the right-mouse button drop-down menu), click on the second run to highlight the folder and then paste whole OBs there selecting **Paste** option in the **Edit** menu or under right-mouse button drop-down menu.

5.12 Moving OBs between runs

It is possible to move OBs from one run to another, an option that can be useful if you wish to reuse OBs originally defined for a past programme for a new one. To do this, select the run containing the OBs that you want to move, and highlight the desired OBs in the *Summaries* area. Then, under the *Edit* menu, select the **Cut** option. After that the selected OBs will be grayed-out. Select now the destination run folder in the *Summaries* area and then under the *Edit* menu, select the **Paste** option. You will be prompted to confirm this action. After answering *yes* the grayed-out OBs will disappear from the first run, and will appear under the folder of the selected destination run. As before, alternative to using options in the *Edit* menu is to use the same options from the drop-down menu, which is available after clicking with the right-mouse button.

Moving OBs from one run to another will remove the OB from the original folder. In case you wish to keep a copy of the OB under its original run, you are advised to use the *Copy* and *Paste* options instead of *Cut* and *Paste*. Also, please note that OBs can be moved only among folders corresponding to runs that use the same instrument.

When moving OBs between runs all the information in the OBs (including the finding charts) is transferred. Since finding charts contain the run ID to which they belong printed in them as part of the contents of the JPEG file, this may cause inconsistencies between the labeling of finding charts and the runs to which they belong. Users should be careful with this point, since obviously P2PP cannot detect such inconsistencies related to information embedded in JPEG files.

5.13 Importing and exporting OBs in ASCII format: the IMPEX mechanism

The OBs that are automatically saved in your Local Cache are in binary format, and are always associated to the observing run under which they were created. This is convenient as long as OBs are created from scratch for a given observing run and generated one by one. However, on some occasions you may find it useful to exchange with a collaborator OBs that each of you have prepared under your own installations. Similarly, survey-like programmes containing OBs for a large number of targets observed with a similar instrumental setup may be tedious to prepare if each OB needs to be individually defined using P2PP, even taking into account the convenience offered by the copy-paste mechanism defined in Section 5.11.

The **Import/Export** mechanism in P2PP, or **IMPEX** mechanism for short, allows you to save and retrieve OBs from P2PP as human-readable lists of template parameter names and values in ASCII format. The names of the ASCII files containing the parameters of *exported OBs* are taken from the OB name followed by the `.obx` extension, and thus allow their easy identification.

After exporting containers, the newly created ASCII files containing the parameters of *exported OBs* will have `.obx` extension, while there will also be one ASCII file per *exported container* with the name of the container followed by the extension that depends on the container type: `.con` for a concatenation, `.grp` for a group, and `.tlk` for a time link.

The advantages of the import/export mechanism can be summarized as follows:

- An *exported OB* contains all the information defined in it except for the run ID and User Portal account ID (an ESO-internal number) of the PI, and can thus be *imported* under a different folder from P2PP, thus allowing the exchange of OBs between different runs. Exported OBs in ASCII format can also be easily exchanged among the coauthors of observing programmes.
- An *exported container* contains information about the number of OBs that belong to it, the user priority of the container, the names of the children OBs and if applicable their relative time delays or group contributions. Additional OBs can easily be added to a container, by adding their names to the list. Also the relative group contributions and time delays can be easily edited.
- ASCII files in the format of *exported OBs* are easy to generate by external applications without the need to use P2PP. These ASCII files can then be *imported* from P2PP and thus transformed into actual OBs.

Consider for example a survey program in which 200 stars from a catalog that lists their coordinates and magnitudes need to be observed under a single instrument configuration, with exposure times varying according to the magnitude. Preparing the OBs for each individual star using P2PP, typing by hand its coordinates and needed exposure time, would be an extremely time-consuming and error-prone task. The **Impex** mechanism allows you to greatly simplify this process by following these steps:

- Using P2PP, create one sample OB for one of the targets with the desired *Acquisition Template*, *Observation Description* and, if applicable (Service Mode), *Constraint Set*.

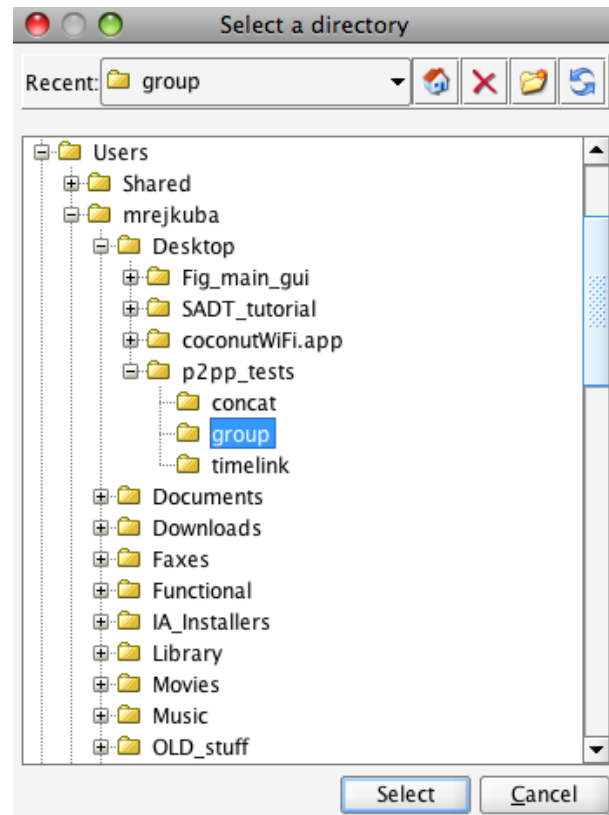


Figure 18: The *Export* window.

- *Export* the OB as described in Section 5.13.1. This will produce a sample OB whose content will be very similar to that of all the other OBs needed for the program, in which only the file name, target name, coordinates, and exposure time will have to be changed.
- Write a program or script that reads the catalog of target names, positions and magnitudes; calculates the exposure time based on the magnitude; determines the name of the output file based e.g. on the target name (followed by the `.obx` extension); and produces this output file with the same format as the sample file that was produced in the previous step, replacing the target name, coordinates, and exposure time by the desired values.
- Again using P2PP, *Import* the files created in this way. This will turn them into actual OBs, which can then be submitted to ESO in the case of a Service Mode program (see Section 6.1) and will be automatically saved in your Local Cache in binary format as any other OB created from inside P2PP.

5.13.1 Producing exported OBs and containers and importing them

The *Import/Export* mechanism is accessible from the P2PP main GUI under the *File* menu. To export an OB or a container with all its belonging OBs to ASCII format, you should follow these steps:

- Select in the *Summaries* area the OB that you wish to export. It is possible to select multiple OBs at once (see Appendix A). If you select the container, then all its children OBs will be exported together with it.
- Under the *File* menu, select **Export**. A window like the one shown in Fig. 18 will appear.

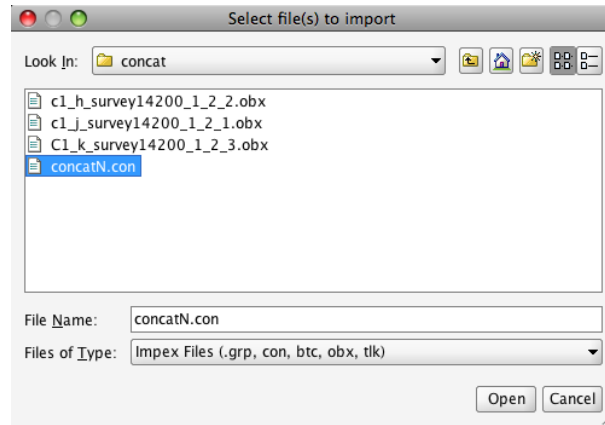


Figure 19: The *Import* window.

- Select the directory where you wish to store the exported OB.
- Click the **Select** button. This will produce and save the exported OBs and container ASCII files in the desired directory.

The subdirectory where exported OBs are saved must exist before the **Select** button is clicked. Otherwise, it must be created using the **Create New Folder** button on the top of the Export window.

The steps to follow in order to *Import* OBs are similar:

- First, make sure that the folder selected in the P2PP main GUI is the one corresponding to the observing run in which you wish to import the OBs. It is also possible to import individual OBs to scheduling containers, by selecting the scheduling container name in the run folder.
- Under the *File* menu, select **Import**. A window like the one shown in Fig. 19 will appear.
- Using the pull-down directory menu, and the folders icon next to it navigate to where the ASCII files to be imported can be found. The list of OBs in `.obx` format existing in that directory will be displayed in the *Files* area.
- Highlight the `.obx` files that you wish to import.
- Once the selection is complete, click the **Open** button.

To *Import scheduling container* together with all its children OBs proceed in a similar way:

- First, make sure that the folder selected in the P2PP main GUI is the one corresponding to the observing run in which you wish to import the scheduling container and its OBs. Scheduling containers can only be imported at the run level.
- Under the *File* menu, select **Import**. A window like the one shown in Fig. 19 will appear.
- Using the pull-down directory menu, and the folders icon next to it navigate to where the ASCII files to be imported can be found. The list of OBs in `.obx` format and the containers in either `.con` or `.grp` or `.tlk` format, depending on the scheduling container type, existing in that directory will be displayed in the *Files* area.
- Highlight the **container files** (`.con` and/or `.grp` and/or `.tlk`) that you wish to import.

- Once the selection is complete, click the **Open** button.

If the files to be imported have not been created with P2PP, please be careful not to include special characters like [or] in their names, since they would cause a failure at the time of importing the files. Such characters cannot be entered when naming an OB from P2PP, but it is possible to do it when creating .obx files from scratch.

5.13.2 Import/Export and attached files (finding charts, ephemeris, and configuration files)

If the OBs to be exported contain attached files such as configuration parameters files, finding charts, or ephemeris, these files will also be automatically saved to the selected export directory. Similarly, at the time of importing an OB its attached files will be automatically imported as well. P2PP will search for the files originally attached to imported OB in the same import/export directory where the .obx file resides. In case that the files cannot be found there, P2PP will display a warning message and will import the OB alone.

The P2PP import/export mechanism allows passing OBs from one run to another, since the run-specific information is removed at the time of exporting OBs. If the import/export mechanism is used within the same run, there is no conflict when finding charts are imported. However, when exporting and importing OBs from one run to another, users should be cautious as the run-specific information in the finding chart (in particular, the label with the observing run ID that must be included in each finding chart) will lead to inconsistencies.

5.14 OB verification

Once you have completed your OBs, P2PP offers you two options to verify their contents and ensure that they will be executable at the telescope.

- The first and most basic level of verification is run automatically as you build up your OB. If a science OB does not contain its mandatory acquisition template, or if any parameter in a template of a science or calibration OB contains a non-permitted value (such as no filter selected or a parameter value outside the permitted range), the OB will appear in the *Summaries* area with a red dot next to it indicating that the OB cannot be considered as complete. If the reason for the failure to verify is a non-permitted template value, viewing the contents of the OB will display such problematic values in red.
- A higher level of verification is offered by the **External Verification Modules (EVMs)**. The main purpose of the EVMs is to perform a number of consistency checks across the templates in an OB, as well as to ensure the compliance of Service Mode OBs with a rather extensive set of rules that Service Mode users need to follow so that their runs can be scheduled. An example of the first category of external verification is the check that the slit width in the acquisition template of a long-slit OB is the same as in the ensuing science templates. An example of the second category is the check that the duration of the OB does not exceed a certain limit imposed by the needs of flexible scheduling. The EVMs can also be used to verify the contents of OBs prepared for Visitor Mode observations.

The EVMs are instrument dependent, as different instruments have different sets of verification rules.

Users can perform the verification anytime during the preparation of their OBs. To do it, simply highlight the OB or group of OBs, or scheduling container to be verified, and select the

Verify option under the *Reports* menu in the P2PP main GUI or click on the *Verify* icon. A verification report will then appear in a pop-up window. In addition to information messages on the checks performed on the OBs, the Verification report also issues error and warning messages mainly related to Service Mode policies (Section 7). Error messages will prevent OBs from reaching the ESO Database unless a *P2PP Waiver* has been submitted and approved (see Section 6.1), while warning messages are intended to call your attention on rather unusual setups to confirm that they are really wanted. However, some of them are also relevant for the preparation of Visitor Mode OBs. Both Visitor Mode and Service Mode users are thus encouraged to make use of this facility.

The external verification is automatically executed also when Service Mode OBs are submitted to the ESO Database (see Section 6.1). If a verification error is encountered at the time of submission, a pop-up window will appear asking the user to review carefully the report. Some error conditions may be approved by means of a waiver (see the P2PP Web pages for a detailed description of the Phase 2 Waiver Request procedures). If the reported error is waivable and if the waiver request was approved by ESO, clicking on *yes* in the pop-up window will proceed with the check-in. However, if the waiver was not approved by ESO, or if the encountered error cannot be waived the OB will not be accepted by the ESO Database and an error report will be sent back to the user explaining the cause of the error, requesting a revision of the OBs. Since this verification is performed at the time that the OB reaches ESO, the error report can take several seconds before being received, or even minutes if a large set of OBs is submitted. This can become very inconvenient if large sets of OBs are sent to the ESO database. For this reason, *Service Mode users are strongly encouraged to perform the Verification of their OBs locally before submitting them to ESO using the Verify button or Verify Report*¹.

5.15 The README file facility

An important part of the Phase 2 package is the ability of the user to provide the observatory with a variety of ancillary information regarding execution conditions of the observations, indications on special observations such as pre-imaging or Target-of-Opportunity runs, etc.

This information is provided through the README file facility, prepared and submitted from within P2PP.

5.15.1 Preparing the README information

The README file preparation facility is accessible via the **Readme** icon in the icon bar of the P2PP main GUI (see Figure 9), or through the **View/Edit Readme** option under the **Readme** menu in the menu bar of the same window. This opens the README Edit window, whose layout is shown in Figure 20.

The structure of the README file is fairly simple. A header, non-editable section contains generic information on the run (its ID, the assigned instrument, the priority class A, B or C, the approved time, the proposal type – normal, GTO, DDT, Large... –, and the name of the PI). Below there are two main tabs. *Readme* tab contains first the **Principal Investigator Email Address**, which must be given to ensure that the most recent contact information on the PI is available to ESO. Only the address of the Principal Investigator must be entered, even in the case that the person preparing the Phase 2 package is not the PI.

¹Note about approved waivers: when running the verification of OBs locally from P2PP Verify Report or using Verify icon in the P2PP main GUI, the EVM does not connect to the server at ESO where the information about the approved waivers is stored. Therefore even when a particular waiver has been granted, the script will still return the error.

Readme

ESO Run Code: 60.A-9253(N) PI / COIs: P2PP tutorial account

Proposal Type: NORMAL OPC Priority Class:

Instrument: VISTA OPC Approved Execution Time: 0 hours

readme checklist

Principal Investigator Email: w.a.mozart@salzburg.at

Estimated Total Execution Time (including overheads): 12 hours

- General Description
- Waiver Requests
- Critical Observing Condition Constraints
- Time-Critical Aspects
- Special Execution Requirements
- Special Calibration Information

This is a simple imaging run with repeated jitters on the same position and the same instrument setup. The goal is to stack together the output of all OBs and produce a very deep image on which photometry and astrometry will be performed.

OK Cancel

Figure 20: The README Edit window.

The entry **Estimated Total Execution Time** must be manually filled with the output of the execution time report (see Section 5.9). The purpose of requiring a manual input, rather than automatically populating this field, is to ensure that the user has verified the total amount of time required for the execution of the OBs and its correspondence with the allocated time.

Below the **Estimated Total Execution Time** is a number of fields to be filled by the user providing details on several aspects of the run. To maintain the appearance of the window compact, each of these fields is accessible by clicking on its corresponding tag. The content that must be entered in each of these fields is described in the README section of the Service Mode guidelines:

<http://www.eso.org/sci/observing/phase2/SMGuidelines/ReadmeFile.html>

Note that some of these fields are optional and must be filled only when relevant to the run, while mandatory fields have a small red triangle next to them. For example, the fields *General Description*, *Critical Observing Conditions Constraints*, and *Time-Critical Aspects* are mandatory, to ensure that the proper information is not missing. In case that the question does not apply (for instance, if there are no time-critical aspects associated with the run) this must be explicitly indicated.

The second tab is a *checklist*. It contains a number of questions that are used to remind the users about some aspects that must be taken into account when preparing a Phase 2 package for the assigned instrument. This part is instrument-dependent. All questions must be answered with either *yes* or *N/A (not applicable)* for the Phase 2 package to be acceptable.

6 Making OBs reach the Observatory

After reading the previous Chapters, the appropriate instruments' User Manuals, and the documents on observing run execution policies, you should be able to prepare the complete set of OBs and, in Service Mode, the README file that will compose your observing run. The OBs (and eventually also the finding charts, ephemeris files, and README file) are now stored in your Local Cache, this is, they reside on your own machine. In this Chapter we describe what you should do to make this material reach ESO so that the observations can be finally executed at the telescope. In addition, we provide some insight on what happens to your OBs in the case of Service Mode observing after you have submitted them. We also describe Service Mode procedures to resubmit OBs and README files in case that problems requiring modification are discovered during the review of Phase 2 submission, or at execution time.

6.1 Submitting your Phase 2 package (OBs and README file) in Service Mode

If your observing time has been allocated in Service Mode, your OBs and README file must be submitted to the **ESO Database**. This is done directly from P2PP, once you consider your OBs (including scheduling containers) and README file to be in their final form, and after running the *Verify* process (see Section 5.14) to ensure that they are correctly defined and compliant with Service Mode rules.

It is very important to remember that *the submission of your Phase 2 package must always be finished by communicating it to ESO by means of the p2pp-submit button (whistle icon; see Section 6.2). This applies both in case that you are submitting for the first time Phase 2 material for a given run, and in case that you are submitting additional or modified OBs.*

6.1.1 Submitting OBs and scheduling containers to the ESO Database

- To submit the *individual OBs* to the ESO Database, highlight them and select the **Check-in** option under the *File* menu in the P2PP main GUI.
- To submit the *scheduling containers* and all the OBs belonging to them to the ESO Database, highlight the container and select the **Check-in** option under the *File* menu in the P2PP main GUI. **It is not possible to submit only a subset of OBs belonging to a scheduling container. All OBs belonging to a scheduling container must be submitted at the same time through submission of their parent container.**

This will send all the selected OBs, as well as OBs belonging to the selected container through the network to the *P2PP Application Server* at the ESO Headquarters in Germany. Please be sure when preparing your OBs that any exceptions required to service mode procedures have been submitted and approved as a *Phase 2 Waiver Request*. The Waiver Request process is described in detail in the Service Mode Guidelines Web page:

<http://www.eso.org/sci/observing/phase2/SMGuidelines/WaiverChanges.html>

Please be careful if you used different subfolders to define your OBs (see Section 5.3). If you select the parent folder in the *Folders* area, only the OBs and/or container OBs directly under the main folder will be checked in. To submit the OBs under the subfolders, you must highlight OBs and/or containers in each subfolder and check them in.

At the time of submitting OBs, any finding charts and ephemeris files attached to them are automatically submitted to the ESO Database.

Upon arriving at the Application Server, and if the *EVM* for the instrument used is available (see Section 5.14), the submitted OBs will be verified and stored in the ESO Database if no errors are identified in them. If the OBs produce verification errors, they will be rejected and you will receive a report indicating the causes of errors that need to be corrected before resubmitting them. As stressed in Section 5.14, *it is important that you run the verification procedure in your local P2PP installation before checking in your OBs*. This ensures that your OBs do not contain errors that would prevent their entry in the ESO Database and can save much time, as the error report of the verification performed by the P2PP Application Server can take from several seconds to minutes to reach back to the user, depending on the load of the Application Server, the number of OBs to be verified, and the network traffic. Most critical times are those approaching the Phase 2 deadline.

Users of P2PP 3.2 have submitted up to 3500 OBs within few hundreds of containers, but the users submitting such huge numbers of OBs must count with response times for the verification report to run that can be longer than a few minutes. Given that all OBs belonging to a container must be submitted at the same time, submitting containers with more than 500 OBs may not be possible.

6.1.2 Submitting the README file to the ESO Database

The README file is submitted to the ESO Database in a separate step. *Please note that using the Check-in option under the File menu in the P2PP main GUI only submits the highlighted OBs and OBs belonging to highlighted containers, but not the README file nor any non-highlighted OBs/containers!*

To submit the README file, simply use the **Check-In Readme** option under the **Readme** menu. This will send the README file of the currently active run (the run highlighted in the folders area of the P2PP main GUI) through the network to the ESO Database in a way analogous to the one described in the previous Section for the OBs. Also, the content of the README file will be automatically verified once it reaches the P2PP application server in Garching.

6.2 Notifying ESO of the submission of the Phase 2 package: p2pp-submit

The submission of the Phase 2 package is not completed until you have sent the corresponding notification to ESO. The way to send this notification is also embedded in P2PP with the **p2pp-submit** icon (whistle) in the icon bar of the P2PP main GUI.

When you have completed the submission of the OBs and README file to the ESO Database, you must click the **p2pp-submit** icon. This action will produce an automated report listing the material found in the ESO Database for that run. This report is sent by email to the PI of the run at the address listed in his/her User Portal account. In addition, **p2pp-submit** triggers the sending of a note to the support astronomer in charge of reviewing the Phase 2 material for your run, thus starting the process of your Phase 2 package that should eventually lead to the certification of your observations as approved for execution. If you have prepared and submitted OBs for several different runs, the **p2pp-submit** icon should be pressed once for each run, as different runs may be supported by different support astronomers.

6.3 Certification of the Phase 2 package by ESO

When your OBs have entered the ESO Database, their status is automatically changed to *Defined* (see Section 6.3.2 for a detailed description of the OB status) and a lock symbol appears next to them in the *Folders and Summaries* grid of the main P2PP GUI. In addition, a unique identification number (the **ESO OB ID**) is assigned to the OB upon entering the ESO Database.

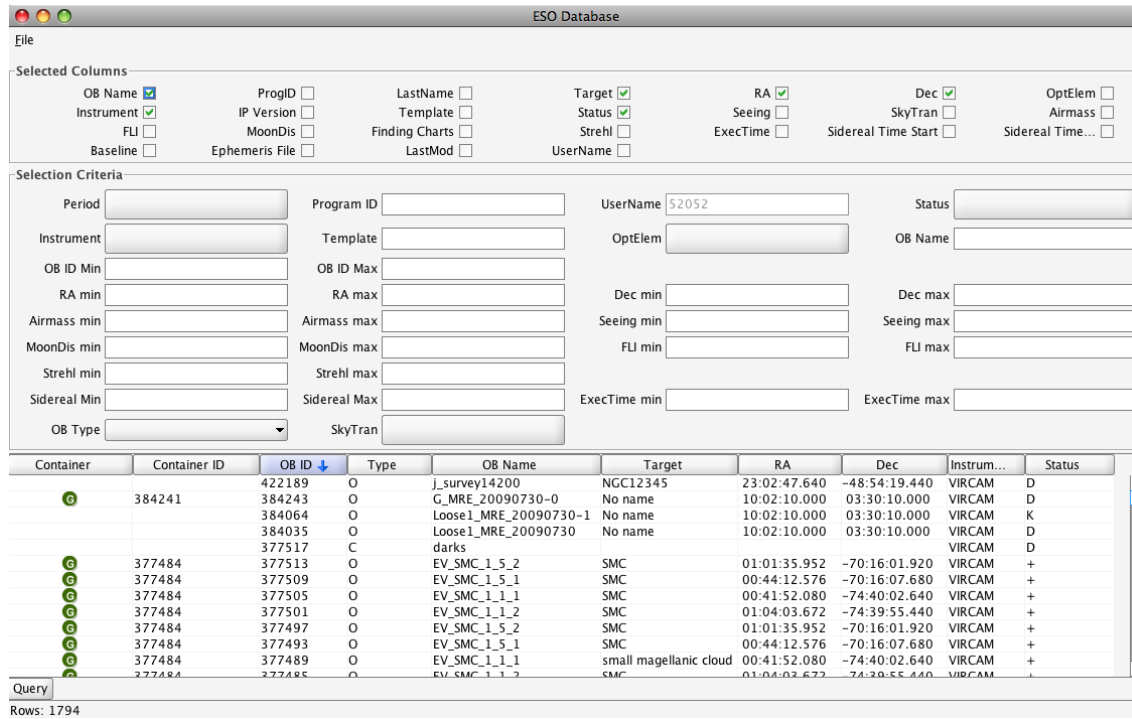


Figure 21: The Database Browser window.

After you notify ESO about your Phase 2 submission via `p2pp-submit` button (Section 6.2), a support astronomer (at the ESO User Support Department) starts the task of reviewing your Phase 2 package. The Phase 2 review process aims at ensuring that the Phase 2 package can be used as it is by the astronomers carrying out the Service Mode observations. It pays attention to many aspects beyond those that can be automatically checked by the P2PP verification facilities, such as the adequacy of the intended strategy to the scientific goals of the programme. Normally, you will be contacted by your support astronomer in case that any problems are identified during the review process or that any suggestions to improve the efficiency of your programme can be made. This can take up to a few weeks, given the number of runs normally handled.

Once your Phase 2 package is certified as executable, your OBs and README file change their status to 'accepted' (see Sect. 6.3.2) and are ready to be included in the Service Mode queues for scheduling at the telescope, and the auxiliary material is made available to the Observatory.

6.3.1 Checking OBs and containers out of the ESO Database: the Database Browser

Your OBs continue to exist in your Local Cache after you have submitted them to ESO, but they are locked and cannot be modified or submitted again to the ESO Database. Likewise, once the support astronomer has started the review of your Phase 2 package, you will not be able to remove OBs from the ESO Database.

It is possible however that during the certification process the support astronomer requests or suggests modifications to be implemented in your OBs, or that later on problems are identified when trying to execute the OBs that can only be solved by modifying them. This requires you to retrieve them (check-out) from the ESO Database, make any changes needed, and submit them again (check-in).

The simplest way to retrieve submitted OBs is by selecting them in your P2PP main GUI window (these are OBs with light gray colour and small lock symbol next to them), and then choosing **Check-out** option from the *File* menu in the P2PP main GUI.

Alternatively, for cases when the Local Cash is corrupted, or for some other reason the submitted OBs are not visible in the main P2PP window, it is possible to retrieve the submitted OBs from the ESO Database by first displaying the contents of the ESO Database. This is done by means of the **Database Browser (DBB)**, a useful browsing utility that allows you to display a variety of information on the OBs that you have submitted to the ESO Database under your ESO-internal account ID.

The **DBB** is started by selecting the **View ESO Database ...** option under the *File* menu in the P2PP main GUI. This action will display a window similar to the one shown in Figure 21.

The *DBB* contains three main areas:

- The **Selected Columns** area allows the user to select the information to be displayed for each OB by clicking on the corresponding checkbox. Most of the items are self-explanatory.
- The **Selection Criteria** area allows the user to filter out the OBs to be displayed according to a large number of criteria, such as the program to which they belong, their status (Section 6.3.2), or their contents. When a value is entered in a box, or selected in a drop-down menu, it becomes a selection criterion for the subsequent database search. Please note that the drop-down menus allow for the simultaneous selection of several options. Again, the entries are mostly self-explanatory.
- The *display area* presents a grid with the results of the database query showing the selected columns for the OBs fulfilling the selection criteria specified. Clicking on the box with the title of one particular criterion selects it for sorting in descending order, placing a downwards arrow in the box; clicking twice selects it for sorting in ascending order.

In addition, there is an upper bar with the *File* menu, which offers two choices: a **check-out** and **exit** (closing down the DBB).

After selecting the columns with the information that you wish to display and defining the selection criteria if needed, press the **Query** button in the lower left corner to search the ESO Database and display the result of the search.

If you need to **Check Out** OBs, first of all they need to have a status (Section 6.3.2) that allows this operation. The OB status can be changed only by the support astronomer, who will communicate to you when the appropriate status has been set.

The steps that need to be followed to check out an OB or a group of them are:

- Select in the DBB the OBs that you wish to check out.
- Under the *File* menu in the DBB, select the **Check-out** option.

This will remove the selected OBs from the ESO Database and will place them in your Local Cache. If the checked-out OB already existed in your Local Cache (as will normally be the case if you are using for check out the same P2PP installation that you used for producing the OBs), it will be overwritten. Note that the lock symbol in front of the OB entry disappears and the OB is again shown in black once the OB has been successfully checked out.

Selecting in DBB an OB that belongs to a container will check-out all OBs from that container. However, only those OBs that have not yet been executed, and that have editable status ("D", or "-.", see Sect. 6.3.2) will be actually checked-out and the lock symbol next to them will disappear in your main P2PP window. The other OBs (e.g. successfully executed, and accepted OBs with status "C", or "+.") belonging to the scheduling container will still have the lock symbol. These OBs cannot be edited.

To check-in the revised OBs belonging to a container back to the Database, please select the container in your P2PP main GUI window and then **Check-In** option from the *File* menu.

Please note that, as mentioned above, OBs that have editable status (i.e. status "D", or "-", see Sect. 6.3.2) are removed from the ESO Database at the time of checking them out. In case of accidental deletion of a checked-out OB from your Local Cache, the OB is thus lost.

6.3.2 OB status

The **OB status** is a flag assigned to each OB that describes the stage of its lifetime in which it is. There are a variety of OB status flags, only a subset of which are of interest to the general user:

- **Status 'P'** (partially defined): this is the initial OB status that is assigned to the OB, and is maintained as long as it is not submitted to the ESO Database.
- **Status 'D'** (defined): an OB is considered to be fully *defined*, and its status changes automatically to *D*, as soon as it reaches the ESO Database. In the ESO Database an OB keeps the status *D* until a support astronomer starts reviewing it. OBs with status *D* can still be checked out and then edited by the user who submitted them.
- **Status '+'** (accepted): the support astronomer changes that status to '+' once the OB has been reviewed and certified as valid. OBs marked as '+' cannot be checked out for editing and revision.
- **Status '-'** (rejected): the support astronomer sets the status to '-' when an OB presents any problems preventing their certification. OBs with status '-' need to be checked out by the user for modifications or repair. If OB with status '-' belongs to a scheduling container, the whole scheduling container must be checked-out; however, only those OBs within the container with 'D' or '-' status can be edited.
- **Status 'C'** (Completed): the OB status is set to *C* when the OB has been completed within specifications and thus will not be repeated. OBs with status *C* cannot be checked out.
- **Status 'M'** (Must be repeated): this status is set when the OB has been executed but outside the specified constraints. This OB will be re-inserted in the Service Mode queue to be executed at a later time. OBs with status *M* cannot be checked out.
- **Status 'A'** (Aborted): this status is set when an OB is aborted during execution. This OB will be re-inserted in the Service Mode queue to be executed at a later time. OBs with status *A* cannot be checked out.
- **Status 'F'** (Failed): this status is set when an OB containing *absolute* time widow(s) or being part of a time-linked container, and having acquired the absolute time window due to execution of the previous OB, expires; i.e. when its absolute time window(s) is(are) in the past. OBs with status *F* cannot be checked out, and this status is irreversible.
- **Status 'T'** (Terminated): this status is set by the support astronomer for the OBs that belong to runs that have been Terminated at the end of the observing period because the run is not eligible for carryover status. OBs with status *T* cannot be checked out, and this status is irreversible.

Through the OB status, the DBB thus gives you a way to check the progress of your observing run. Nevertheless, you will usually find more useful to check the Run Status Web pages through the Run-Related Tasks on the User Portal in order to obtain the same information. Those pages contain useful links to the ambient conditions data and other ancillary information unavailable from the DBB.

6.3.3 Resubmitting OBs with modified finding charts or ephemeris files

When an OB that needs modification is checked out of the ESO Database its entire content is checked out, including the finding charts and ephemeris file that it may contain. Finding charts and ephemeris files are components of the OB and cannot be checked out and resubmitted separately. If a finding chart or an ephemeris file common to several OBs needs to be modified, then all the affected OBs need to be checked out, the conflicting finding chart or ephemeris file must be detached, a correct finding chart or ephemeris file must be attached to all the affected OBs, and these OBs need to be checked in again.

The submission of finding charts and ephemeris files takes place simultaneously with the OBs in a manner that is transparent to the user, as noted in Section 6.1. This is also the case when an OB needs to be resubmitted after a modification that does not affect its attached finding charts or ephemeris file. However, if the finding chart or ephemeris file itself needs modification, two simple rules need to be taken into account in order to keep the integrity and consistency of the ESO Database, so that there is a one-to-one correspondence between finding chart or ephemeris file names and contents:

- **It is not possible for a given run to have in the ESO Database two or more finding charts or ephemeris files with the same name but different contents.** If you try to attach two finding charts or ephemeris files with the same name but different contents to two OBs, the second one will be rejected at check-in time for this reason.

A more common case is the resubmission of an OB with a finding chart that has been modified, but whose name has been kept unchanged. If this finding chart was not used by any other OB that has been left in the ESO Database, this operation causes no conflict and is thus permitted. However, if there are already in the Database OBs for the same run that use a finding chart with the same name but different contents (for example, an older version of the finding chart), the check-in attempt will fail and a corresponding message will be sent to the user. In such cases the modified finding chart must be given a new name so that the OB can be checked in. The exact same rule applies to ephemeris files, which must thus be renamed if a copy with the same name but different contents exists already in the ESO Database.

- **Conversely, it is not possible for a given run to have in the ESO Database two or more finding charts or ephemeris files with the same contents but different names.** If you rename a finding chart that is attached to an OB already existing in the ESO Database without changing the content of the finding chart, check-in will not be permitted for this reason. If you do want to resubmit an OB with a finding chart that has identical content as another finding chart already existing in the ESO Database, please rename it so that the name is also identical. Also in this case, the same rule applies to ephemeris files.

Please remember to press the button `p2pp-submit` after having successfully submitted all your modified OBs.

6.3.4 Checking out the README file

It is possible that during the review process of the Phase 2 package items are found in the README file that require modification by the user. Examples of this may be incomplete or ambiguous information on the execution of the run, or requests for actions unsupported in Service Mode. If such modifications are needed you will be contacted by your support astronomer and you will need to modify the README file accordingly.

In order to be able to modify the README file, you must first check it out of the ESO Database. This is done by means of the `Check-Out Readme` option under the `Readme` menu in the P2PP main

GUI. Once the desired modifications are completed, you must check in the README file again as indicated in Section 6.1.2 and click on `p2pp-submit` as indicated in Section 6.2.

It may be interesting to note a difference between the check out process of OBs and README files regarding the contents of the ESO Database. As noted in Section 6.3.1, when an OB is checked out its content is effectively removed from the ESO Database. This is not the case for the README file: in some instances, the modifications required are sufficiently minor so that the run can continue to be executed, or may affect only a subset of the submitted OBs while the remaining ones stay executable. In those cases the previous version of the README file must be still available at the Observatory while the required modifications are being made. For this reason, when the README file is checked out of the ESO Database a copy of it is kept there, and it is replaced only when the modified README file is checked in and accepted by the support astronomer.

7 Important notes on the preparation of Service Mode observations

To make Service Mode observing efficient and reliable, ESO has set up a number of policies that affect the planning of the observing strategy, the composition of the material to be prepared by users at Phase 2, and particular aspects of OB preparation, both general and instrument-related. Giving a complete description of these policies is beyond the scope of this manual. All Service Mode users are thus referred to the documents on Service Mode observing that can be found in the Web pages of the User Support Department:

<http://www.eso.org/sci/observing/phase2/SMPPhilosophy.html>

as well to the article *Service Mode Scheduling: a Primer for Users*, by D. Silva, in *The Messenger*, 105, 18 (2001). Here we give only a quick review of important general aspects to keep in mind while preparing OBs for your Service Mode runs.

7.1 OBs are executed only once

If your program requires an observation (either of a science or of a calibration target) to be executed multiple times, you must provide as many individual OBs as executions are needed. It is not possible to provide only one OB, and specify that it should be executed multiple times. OBs are repeated only if the first execution produced results outside specifications.

The only exception to this rule are ToO and RRM observations. Users planning such observations should consult policies for ToO and RRM on:

<http://www.eso.org/sci/observing/phase2/SMSpecial/T000observation.html>

and

<http://www.eso.org/sci/observing/phase2/SMSpecial/RRM0bservation.html>.

In the case of OBs for the observation of calibration targets, if possible please use Concatenation containers to link them to the science OBs. If this is not possible (e.g. because the science OBs are already part of a time-linked container), then please use the *User Comments* field in the View OB GUI to indicate the science OB(s) for which such calibrations are intended.

7.2 Calibration Plans and additional calibration observations

In order to ensure a baseline accuracy of the data obtained, ESO has implemented Calibration Plans for each of its instruments. The Calibration Plan, which is described in detail in the User Manual of each instrument, specifies a number of observations that the Observatory executes in both day- and nighttime, aiming at providing the necessary data to calibrate to a certain level of accuracy all the scientific observations obtained. The calibration plan is implemented in both Visitor and Service Mode.

It is very important at the time of planning an observing program, as well as when preparing the Phase 2 material, to check in the User Manual of the corresponding instrument the details of the Calibration Plan. In Service Mode, the execution of the Calibration Plan is not charged to the time allocated to your observing run. Therefore, if you consider that the data obtained as a part of the Calibration Plan will be sufficient for the scientific purposes of your run you do not need to produce any additional OBs for calibration and you do not need to account for the time to be devoted to such calibrations when preparing your proposal.

If you plan to use instrument setups that need to be calibrated but are not supported by the Calibration Plan (such as for instance observations in narrow-band filters with WFI), you need to provide

your own OBs for calibration purposes. In this case, the execution of these OBs becomes a part of the time allocated to your run and you need to include it in the overall execution time calculation.

7.3 Execution overheads are part of the allocated time

At the time of writing your proposal and of preparing your OBs, you must take into account that the time allocated to your run is total execution time, this is, integration time plus execution overheads, and not only integration time.

The computation of the overheads is based on predetermined values that have been measured by the Observatory, or on average values when the overhead is variable such as in the case of a telescope preset. *The execution overheads that must be considered in the time accounting are thus the estimated times based on these predetermined values*, rather than the actual overheads that may be known precisely only after the execution of the observations.

Execution overheads due to different actions (telescope preset, slit centering, instrument setup, detector readout, etc.) are described in detail in the User Manual of each instrument. Moreover, they can be readily computed by P2PP using the *Execution Time Report* facility (see Section 5.9), which takes into account the overhead values as published by the Observatory, and thus the official accounting of execution time as carried out by ESO.

7.4 Independent execution of each OB

One of the key points of the efficiency of Service Mode observing is the ability to select at short notice the OBs that best exploit the prevailing external conditions while taking into account the relative priorities of the programs in the Service Mode queue. For this reason, there are only some limited possibilities to request linked execution of OBs. These are implemented with the new scheduling containers. For the use of scheduling containers please refer to Section 2.4.

As a consequence of this, users are not allowed to discount overheads by assuming that their OBs will be executed in a given order or consecutively. At the time of planning the strategy of your Service Mode run, you must assume that each OB will be executed separately from the rest, and you must account for the execution overheads accordingly. Concatenation of OBs is accepted within the Concatenation scheduling container, only if justified on sound scientific grounds and requested in phase 1 proposal.

7.5 OB duration limited to one hour

Like in the case of linked OBs, OBs that take a long time to execute decrease the flexibility of Service Mode observing. Moreover, the longer the OB, the higher the likelihood that the external conditions degrade outside the specified constraints during the execution. Therefore, in order to preserve the efficiency *the observatory does not allow the submission of OBs with durations exceeding one hour of execution time*. In case that the scientific case of your Service Mode run justifies it, you may submit a waiver request

(see <http://www.eso.org/sci/observing/phase2/SMGuidelines/WaiverChanges.html>)

to allow longer execution times. When such requests are approved, the observatory guarantees the fulfillment of the user-specified constraint set (see Sections 5.4.4 and 7.7) only for the first hour of execution, and the OB is considered as executed within specifications even if the conditions degraded afterward.

The same rule as for the individual OBs is valid for the concatenated OBs: *the total execution time for all the OBs belonging to the Concatenation must be within 1 hour*. In case that the scientific

case of your Service Mode run justifies it, you may submit a waiver request to allow longer execution times for the Concatenation of OBs. When such requests are approved, the observatory guarantees the fulfillment of the user-specified constraint set (see Sections 5.4.4 and 7.7) only for the first hour of execution, and the Concatenation is considered as executed within specifications even if the conditions degraded afterward.

7.6 Need to maintain OBs simple

An additional advantage of Service Mode observing is the possibility to increase the observing efficiency by minimizing the number of changes in instrumental setup and the number of required calibrations by executing OBs having similar setup and calibration requirements on a given night. For this reason, users are strongly advised to *use only one instrument setup within a given OB whenever possible*. The submission of OBs involving multiple instrument setups must be requested in advance using a waiver request (see <http://www.eso.org/sci/observing/phase2/SMGuidelines/WaiverChanges.html>) and may be denied by ESO in case that it involves an excessive load on the execution of the calibration plan.

7.7 The Constraint Set and its consistency with Phase 1 information

As explained in Section 5.4.4, users can specify the limits on the conditions under which a given OB can be executed. These specifications are then checked against the prevailing external conditions at the time of deciding whether or not a given observation should be started. ESO will try to execute the OBs under conditions that are those specified in the *Constraint Set* or better.

The Constraint Set is in general instrument-specific. However, the following items are common to all the instruments:

- **Sky transparency**, for which four different situations can be specified:
 - *Photometric*: No visible clouds, transparency variations under 2%.
 - *Clear*: Less than 10% of the sky above 2 airmasses covered by clouds, transparency variations less than 10%.
 - *Variable, thin cirrus*: transparency variations between 10 % and ~20%.
 - *variable, thick cirrus*: large transparency variations possible, essentially equivalent to no constraint on the transparency conditions.
- **Seeing**: Whenever possible, the seeing is defined as the FWHM size in arcseconds of a point source in the focal plane of the instrument. When this measurement is not possible, the FWHM measured in the telescope's guide probe or the measurement provided by the Astronomical Seeing Monitor are used instead.
- **Lunar illumination**, expressed as the fraction of the visible lunar disk illuminated by the Sun.
- **Moon angular distance**, i.e., the angle between the center of the lunar disk and the target of the observation.
- The **Airmass**, i.e., the column density of the atmosphere in the direction to the source expressed as a multiple of the column density towards the zenith, is common to most instruments except for MIDI. In this latter case it is superseded by the local sidereal time interval of the observations.

Other constraints are instrument-specific:

- The **Twilight**, i.e. the time in minutes with respect to the end of the astronomical twilight (solar elevation of -18 degrees) when the observation can start. The default value is 0, negative number means that the observation can be done that many minutes before the end of astronomical twilight, and the positive number means that the OB should be started only that many minutes after the beginning of the night. Requesting large positive value for twilight constraint may result in reduced amount of time available for observations of some targets, and therefore this constraint should be used as positive value only when justified by scientific requirements.
- The **Strehl ratio**, currently for NACO, SINFONI and CRIFRES observations, as measured in a reference filter on the target used for Adaptive Optics correction (see instrument-specific documentation for more information). In these cases the Strehl ratio replaces the seeing as a measurement of the data quality.
- The **ATM** or Atmospheric Turbulence Model, is used by AO instruments NACO, SINFONI and CRIFRES in order to specify the atmospheric model for the Adaptive Optics observation. For the moment only one AO model is available, the so-called default Paranal model. In the future this constraint may be changed to allows usage of different atmosphere models. NACO, SINFONI and CRIFRES OBs that do not require AO, should put "no constraint" for ATM.
- The **PWV** or precipitable water vapor is used to schedule observations requiring observations in mid-IR where the measurement of PWV is important contributor to the atmospheric transparency.
- The **baseline**, for VLTI observations, indicate the combination of Unit Telescopes or Auxiliary Telescopes with which the interferometric observations must be made. Typically several baselines are offered each period and announced in the Call for Proposals.

Note that some of these constraints were already specified in the original observing proposal. This is in fact a very important factor that is taken into account when deciding which Service Mode programmes can have time allocated to them, based on the expected occurrence of any given set of external conditions at the observatory. For this reason, *ESO does not allow users to specify more stringent constraints at Phase 2 than the ones specified at Phase 1*. You can however *relax* the constraints with respect to what you specified at Phase 1 in order to increase the range of conditions under which your run can be executed, and thus improve the chances of execution:

- **Transparency constraint:**
 - If you specified *PHO* (*photometric*) at Phase 1, you can specify any value in your OBs.
 - If you specified *CLR* (*clear*) at Phase 1, you can specify *Clear*, *Variable*, *thin cirrus*, or *Variable*, *thick cirrus* in your OBs.
 - If you specified *THN* (*variable*, *thin cirrus*) at Phase 1, you can specify *Variable*, *thin cirrus* or *Variable*, *thick cirrus* in your OBs.
- **Moon constraint:**
 - If you specified *d* (*dark*) at Phase 1, you must specify *Lunar illumination* = 0.0 or greater in your OBs (*Lunar illumination* = 0.0 is interpreted as "Moon below the horizon")
 - If you specified *g* (*grey*) at Phase 1, you must specify *Lunar illumination* = 0.4 or greater and *Moon angular distance* = 120 or less in your OBs.

- If you specified n (*no restriction*) at Phase 1, you must specify *Lunar illumination* = 1.0 and *Moon angular distance* = 60 or less in your OBs.

- **Seeing constraint:**

- The *Seeing* specified in the constraint set of your OBs must be equal to that indicated in the Phase 1 proposal or larger. If you specified n (*no constraint*) at Phase 1, you must set it to 2.0 (the largest value allowed by P2PP) in your OBs. The only exception is NACO, where n (*no constraint*) at Phase 1 translates at Phase 2 into 1.4 arcseconds, the largest value allowed by the NACO Preparation Software.

Note also that a small subset of OBs may request photometric conditions even if *clear* transparency was specified at Phase 1, if this is needed for the flux calibration of observations that can be obtained under non-photometric conditions (for example, a set of identical OBs on the same field, of which only one suffices to determine the photometric zeropoint). This is allowed as long as the execution time of the OBs requiring photometric conditions does not exceed 20% of the total time allocated to the run, and as long as accurate flux calibration is mandatory to reach the scientific goals of the programme.

7.8 Dealing with Target of Opportunity and Solar System target observations in Service Mode

Due to their nature, it is not possible in the case of Target of Opportunity (ToO) programmes to submit in advance complete OBs with target positions specified. In this case, you must still submit to ESO a set of OBs with the instrument setup fully defined as per normal Phase 2 submission procedures (see Section 6.1), except for the target coordinates that must be left at the default values. The actual coordinates and additional information must be communicated directly to the Observatory when the target becomes known. Further information on ToO procedures can be found at:

<http://www.eso.org/sci/observing/phase2/SMSpecial/T000bservation.html>

for Paranal.

Likewise, since it is not possible to predict the exact time when any given OBs will be executed, it is not possible to introduce in advance in an OB the coordinates of Solar System targets to be observed in Service Mode. In that case, OBs with the approximate coordinates of the target in the middle of the observing period must be submitted, together with a file containing the ephemerides of the target over an appropriate time interval. Further details on how to prepare the Phase 2 material for moving targets are given in <http://www.eso.org/sci/observing/phase2/SMSpecial/MovingTargets.html>.

A Highlighting, sorting, and customizing column widths

A.1 Selecting items

Selecting and highlighting items in the various Graphical User Interfaces (GUIs) composing P2PP is done using standard conventions in mouse-driven events:

- *Highlighting* or *selecting* a single item is simply done by placing the cursor on it and clicking the left button of the mouse.
- *Highlighting multiple elements* is done by holding down the *Ctrl* key (or equivalent in your keyboard) while clicking with the left button of the mouse on each element to be selected. If you wish to highlight a block of elements, you only need to click on the first one of the block, and then on the last one while keeping the *Shift* (or equivalent) key pressed. If you wish to highlight all the elements, click with the left mouse button on one element and then press Ctrl-a key to select them all.
- *Dragging and dropping elements* is done by clicking with the left button of the mouse on the element of interest and, while keeping the mouse button pressed, moving the cursor to the desired position. Once that position is reached, the element can be dropped there by just releasing the mouse button.

A.2 Reshaping columns

In order to display the full contents of a table entry, it is often useful to reshape the width of its column with respect to its default width. The grid tables of P2PP (in the P2PP main GUI, the Observation Description *View OB* window, the Database Browser window) can have their columns reshaped by placing the cursor on the edge that must be moved, clicking the left button of the mouse, and dragging the edge until the desired position.

A.3 Reshaping windows

In case you find it convenient to reshape the windows of the P2PP GUIs, this can be done by clicking on the side or the corner of the window to be reshaped and dragging the cursor to the position in the screen defining the desired edge of the window.

B Troubleshooting

In this Section we describe some of the most frequently encountered problems when installing or using P2PP. If you are encountering a problem that is not described in this Section or elsewhere in this manual, please contact the ESO User Support Department (usd-help@eso.org).

- **ESO has sent me the announcement of allocation of time to my programme, but I cannot see any of its observing run when starting P2PP.**

If your Local Cache contains Phase 1 information on other existing runs in which you are PI, no information on new observing runs is downloaded until you explicitly order P2PP to do so by means of the **Download/Refresh Observing Runs** available under the *File* menu in the P2PP main GUI. See Section 5.1.

- **I am trying to start P2PP using a username and password that ESO gave me some time ago, but I get a 'login incorrect' error message.**

Starting with P2PP v2.13 the old usernames and passwords that you had used in the past will no longer work. Rather, you must use your ESO User Portal Password for logging into P2PP. This username and password can be changed by you at any time (see the corresponding links after logging into the User Portal on <http://www.eso.org/UserPortal>). Note that even if you change the username and password you will still have access to P2PP, with the same cache etc. as before.

If you have forgotten your ESO User Portal username, password, or both please refer to the corresponding links on <http://www.eso.org/UserPortal>. Please note that for security reasons this information can only be conveyed to the owner of the ESO User Portal account.

- **P2PP does not allow me to check out OBs from the ESO Database, although I can see them in the Database Browser.**

As explained in Section 6.3.2, users cannot check out OBs that have been (or are being) reviewed by ESO unless they are specifically allowed to do so by their support astronomers. In that case, the support astronomer must change the OB status to one that allows checkout by the user.

C Acronym List

BOB: Broker of Observation Blocks

COSMO: COntstraint Set MOdule

CS: Constraint Set

DBB: Database Browser

DFS: Data Flow Systems

ETRM: External Time Reporting Modules

EVM: External Verification Module

GUI: Graphical User Interface

JDK: Java Development Kit

JRE: Java Runtime Environment

ID: Identifier

IP: Instrument Package

MOS: Multi-Object Spectroscopy

OB: Observation Block

OD: Observation Description

OPC: Observing Programmes Committee

P2PP: Phase 2 Proposal Preparation tool

PI: Principal Investigator

SADT: Survey Area Definition Tool

SM: Service Mode

VM: Visitor Mode

---oOo---