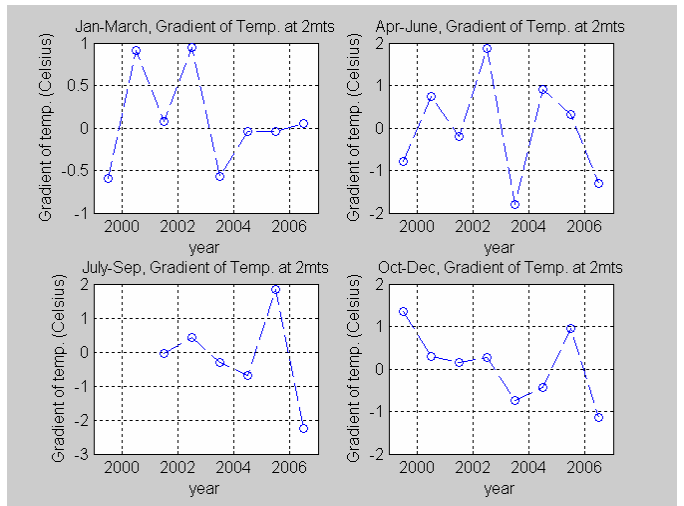
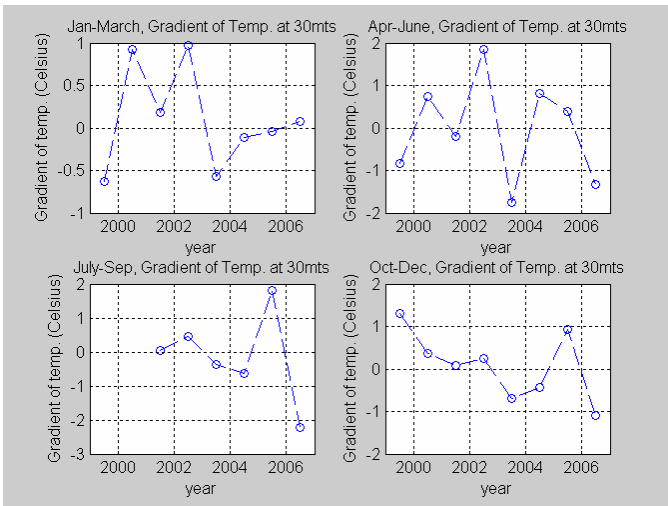
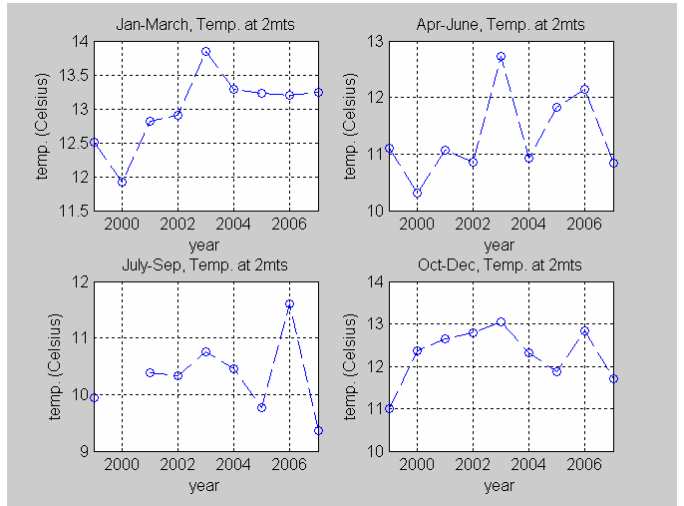
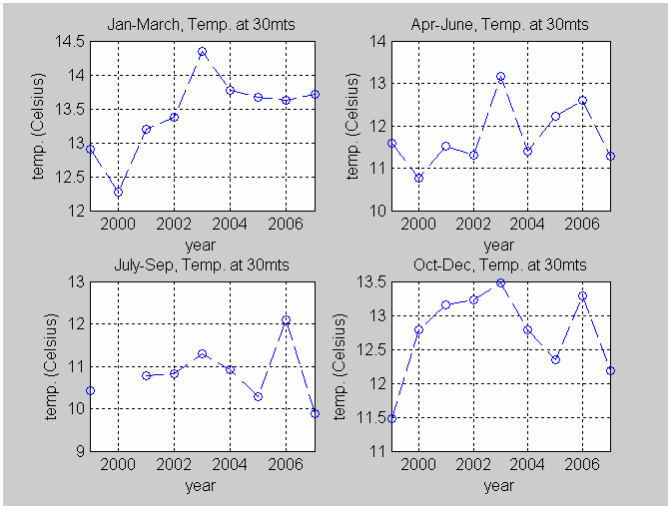
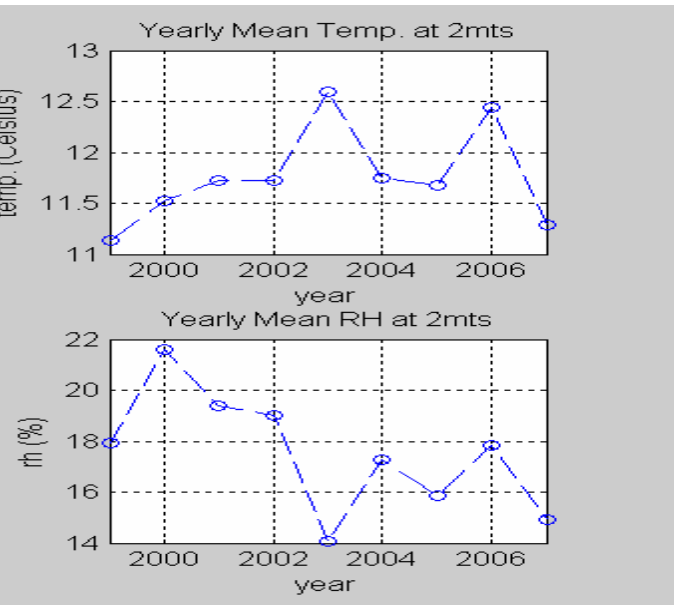
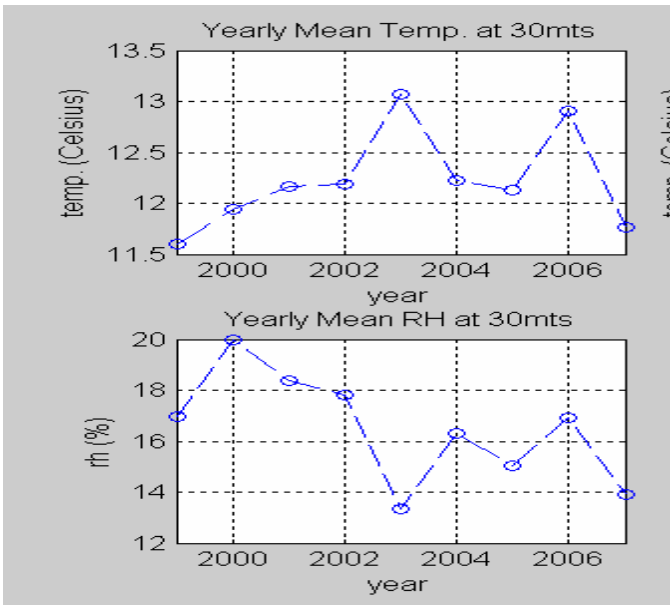
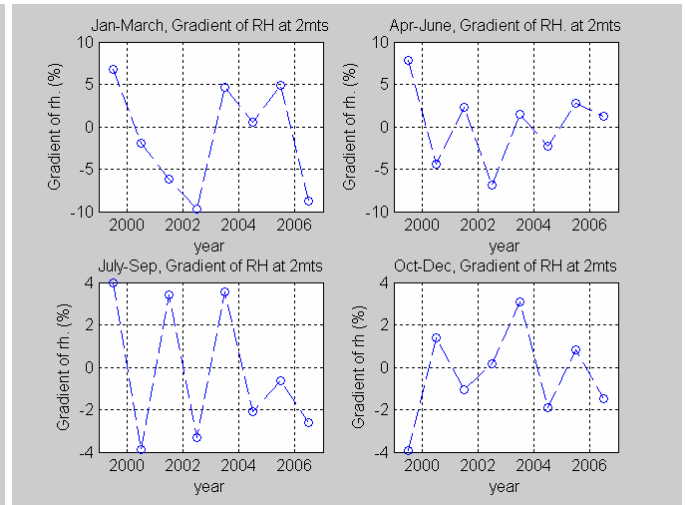
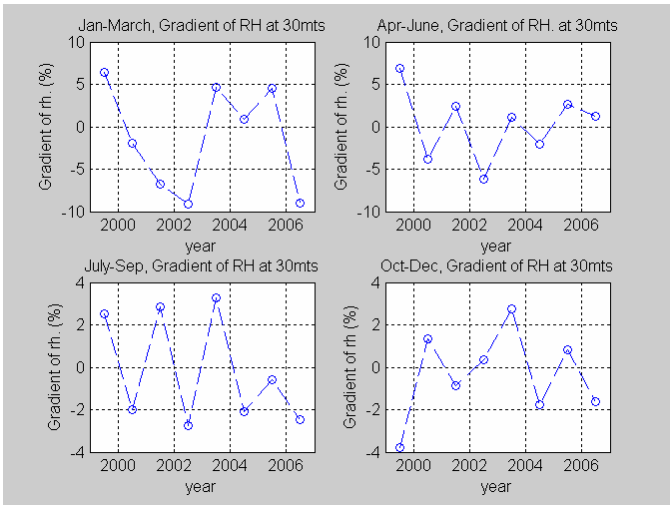
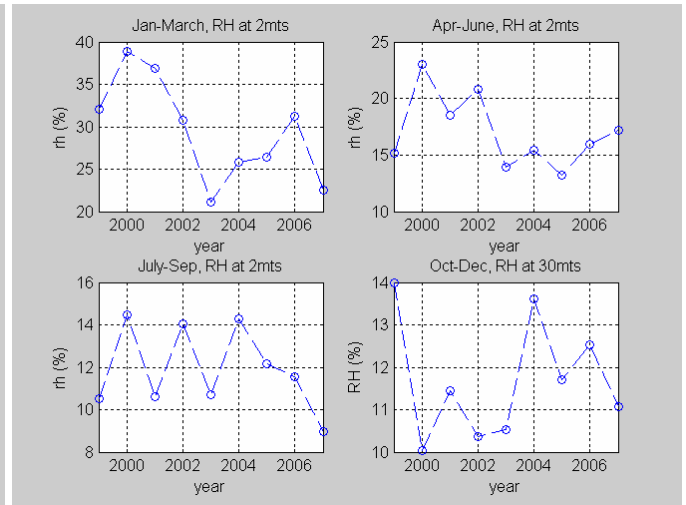
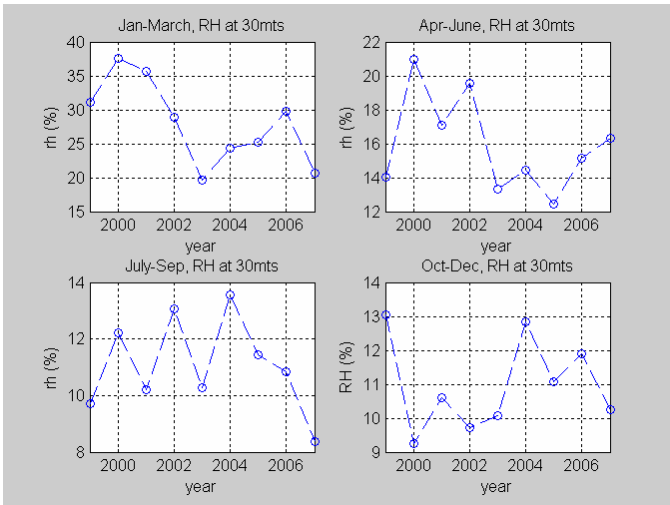


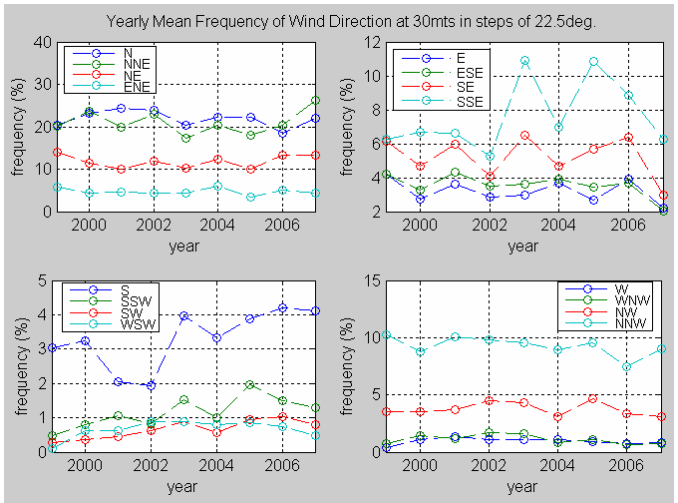
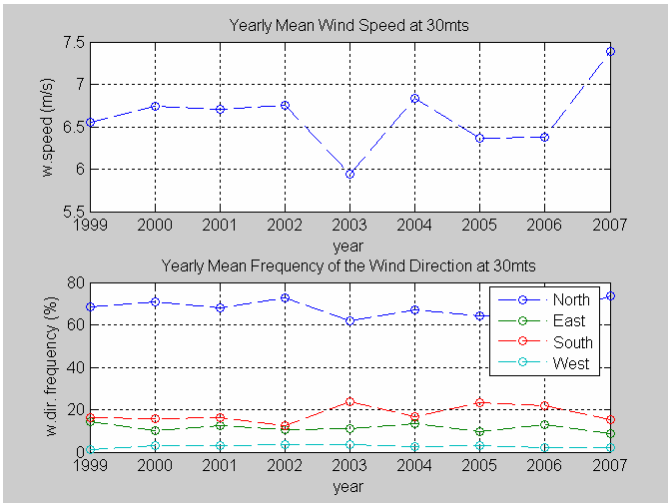
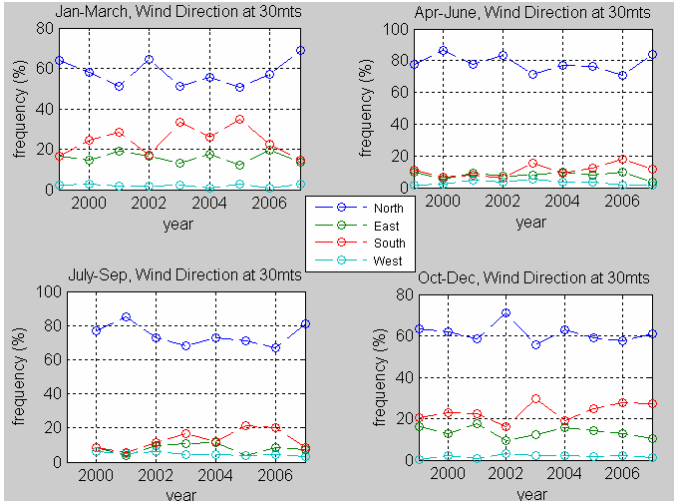
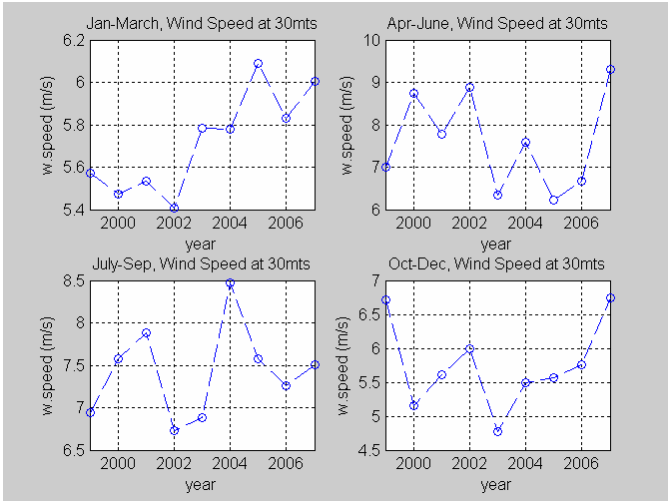
PARANAL, Seasonal meteo. Statistics (Night Only)





Paranal Seasonal Mean Temperature and Relative Humidity (Night time only):

	Temp. 30mts	Temp. 2mts	RH 30mts	RH 2mts
Jan. – March 1999	12.90 °C	12.50 °C	31 %	32 %
April – June 1999	11.59 °C	11.10 °C	14 %	15 %
July – Sep. 1999	10.43 °C	9.94 °C	10 %	10 %
Oct. – Dec. 1999	11.48 °C	11.00 °C	13 %	14 %
Year (total)	11.60 °C	11.14 °C	17 %	18 %
Jan. – March 2000	12.27 °C	11.91 °C	38 %	39 %
April – June 2000	10.76 °C	10.31 °C	21 %	23 %
July – Sep. 2000	No data from sensor	No data from sensor	12 %	14 %
Oct. – Dec. 2000	12.79 °C	12.36 °C	9 %	10 %
Year (total)	11.94 °C	11.53 °C	20 %	22 %
Jan. – March 2001	13.20 °C	12.82 °C	36 %	37 %
April – June 2001	11.52 °C	11.07 °C	17 %	18 %
July – Sep. 2001	10.78 °C	10.38 °C	10 %	11 %
Oct. – Dec. 2001	13.15 °C	12.64 °C	11 %	11 %
Year (total)	12.16 °C	11.73 °C	18 %	19 %
Jan. – March 2002	13.38 °C	12.90 °C	29 %	31 %
April – June 2002	11.32 °C	10.86 °C	20 %	21 %
July – Sep. 2002	10.83 °C	10.34 °C	13 %	14 %
Oct. – Dec. 2002	13.23 °C	12.79 °C	10 %	10 %
Year (total)	12.19 °C	11.72 °C	18 %	19 %
Jan. – March 2003	14.35 °C	13.85 °C	20 %	21 %
April – June 2003	13.16 °C	12.72 °C	13 %	14 %
July – Sep. 2003	11.29 °C	10.76 °C	10 %	11 %
Oct. – Dec. 2003	13.48 °C	13.05 °C	10 %	10 %
Year (total)	13.07 °C	12.60 °C	13 %	14 %
Jan. – March 2004	13.78 °C	13.28 °C	24 %	26 %
April – June 2004	11.40 °C	10.92 °C	14 %	15 %
July – Sep. 2004	10.91 °C	10.46 °C	14 %	14 %
Oct. – Dec. 2004	12.79 °C	12.32 °C	13 %	14 %
Year (total)	12.22 °C	11.74 °C	16 %	17 %
Jan. – March 2005	13.67 °C	13.24 °C	25 %	26 %
April – June 2005	12.22 °C	11.83 °C	12 %	13 %
July – Sep. 2005	10.28 °C	9.77 °C	11 %	12 %
Oct. – Dec. 2005	12.35 °C	11.87 °C	11 %	12 %
Year (total)	12.13 °C	11.68 °C	15 %	16 %
Jan. – March 2006	13.63 °C	13.19 °C	30 %	31 %
April – June 2006	12.60 °C	12.14 °C	15 %	16 %
July – Sep. 2006	12.09 °C	11.60 °C	11 %	12 %
Oct. – Dec. 2006	13.29 °C	12.83 °C	12 %	12 %
Year (total)	12.90 °C	12.44 °C	17 %	18 %
Jan. – March 2007	13.71 °C	13.24 °C	21 %	22 %
April – June 2007	11.27 °C	10.84 °C	17 %	17 %
July – Sep. 2007	9.87 °C	9.36 °C	8 %	9 %
Oct. – Dec. 2007	12.19 °C	11.69 °C	10 %	11 %
Year (total)	11.76 °C	11.28 °C	14 %	15 %



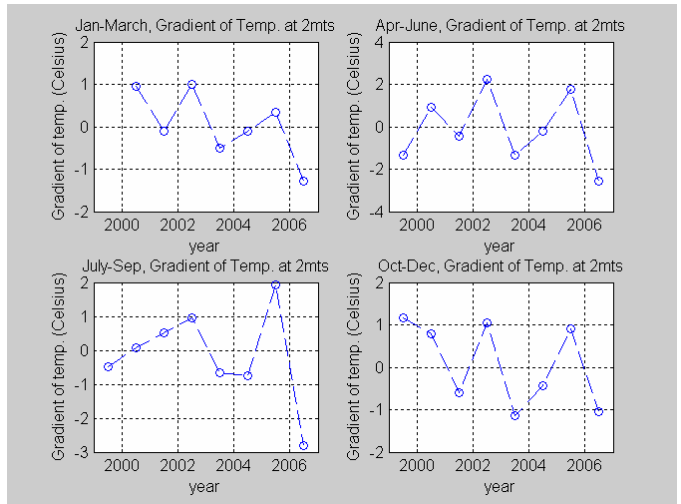
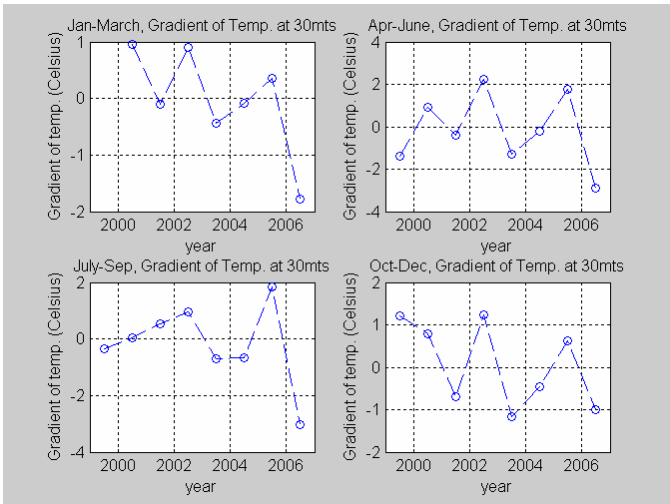
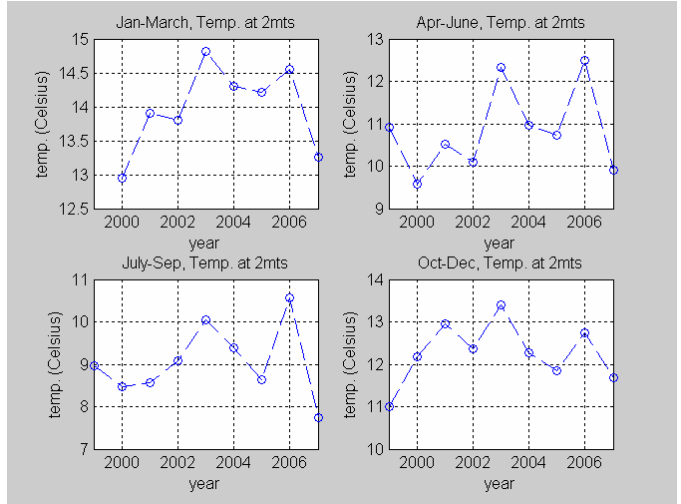
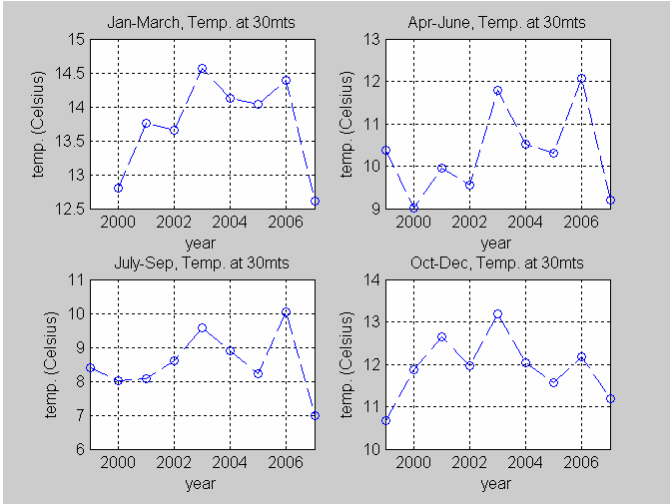
The wind direction data is for wind speed > 2m/s and distributed as:

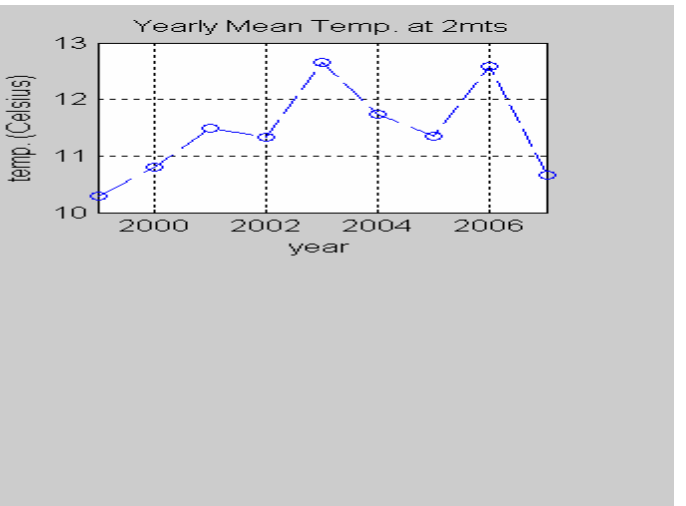
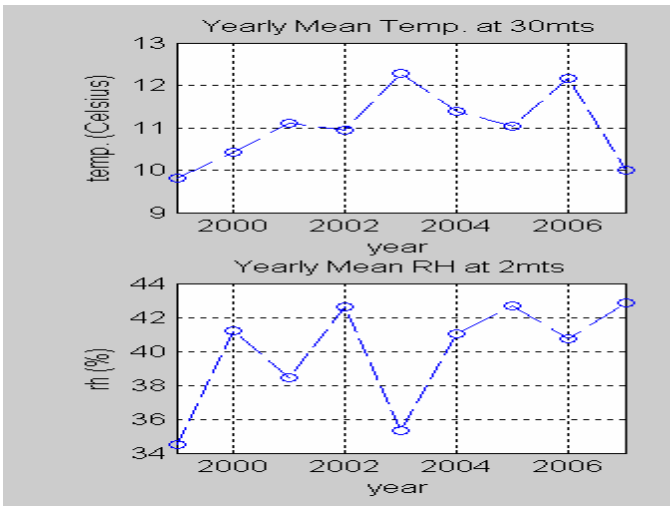
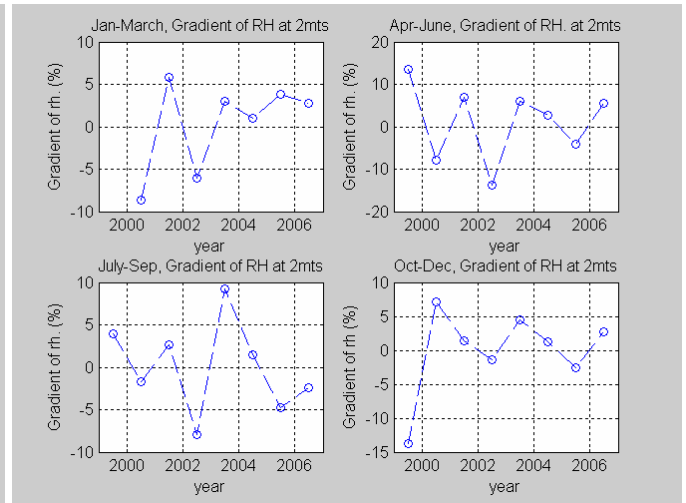
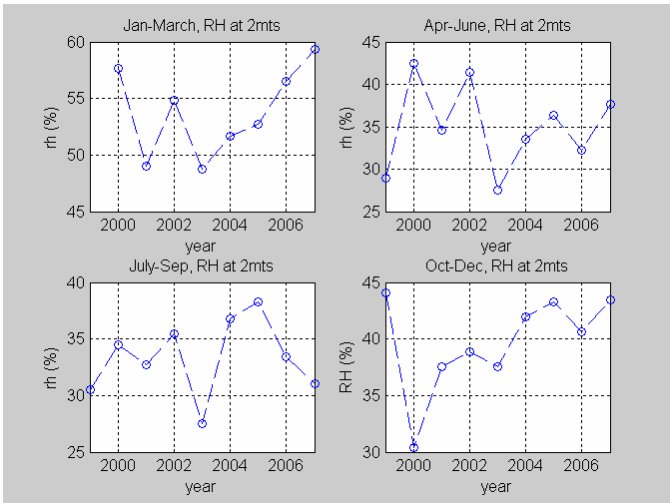
- North = data from 315 to 45 deg.
- East = data from 45 to 135 deg.
- South = data from 135 to 225 deg
- West = data from 225 to 315 deg.

Paranal Seasonal Mean Wind Speed and Frequency of the Wind Direction (Night time only).

	W.speed 30mts	W.dir (North)	W.dir (East)	W.dir (South)	Wdir (West)
Jan. – March 1999	5.57 m/s	64 %	17 %	17 %	2 %
April – June 1999	7.00 m/s	78 %	10 %	11 %	1 %
July – Sep. 1999	6.94 m/s	No data from sensor	No data from sensor	No data from sensor	No data from sensor
Oct. – Dec. 1999	6.71 m/s	63 %	16 %	21 %	0 %
Year (total)	6.55 m/s	69 %	14 %	16 %	1 %
Jan. – March 2000	5.47 m/s	58 %	15 %	24 %	3 %
April – June 2000	8.74 m/s	86 %	5 %	7 %	2 %
July – Sep. 2000	7.58 m/s	77 %	8 %	9 %	6 %
Oct. – Dec. 2000	5.15 m/s	62 %	13 %	23 %	2 %
Year (total)	6.74 m/s	71 %	10 %	16 %	3 %
Jan. – March 2001	5.53 m/s	51 %	19 %	28 %	2 %
April – June 2001	7.78 m/s	78 %	9 %	8 %	5 %
July – Sep. 2001	7.88 m/s	85 %	4%	6 %	5%
Oct. – Dec. 2001	5.61 m/s	59 %	18 %	22 %	1 %
Year (total)	6.70 m/s	68 %	13 %	16 %	3 %
Jan. – March 2002	5.41 m/s	64 %	17 %	17 %	2 %
April – June 2002	8.89 m/s	84 %	7 %	6 %	3 %
July – Sep. 2002	6.73 m/s	72 %	10 %	12 %	6 %
Oct. – Dec. 2002	5.99 m/s	71 %	9 %	16 %	4 %
Year (total)	6.75 m/s	72 %	13 %	12 %	3 %
Jan. – March 2003	5.78 m/s	51 %	13 %	33 %	3 %
April – June 2003	6.34 m/s	72 %	8 %	15 %	5 %
July – Sep. 2003	6.88 m/s	68 %	11 %	17 %	4 %
Oct. – Dec. 2003	4.77 m/s	56 %	12 %	30 %	2 %
Year (total)	5.94 m/s	62 %	11 %	24 %	3 %
Jan. – March 2004	5.78 m/s	56 %	17 %	26 %	1 %
April – June 2004	7.58 m/s	77 %	10 %	9 %	4 %
July – Sep. 2004	8.46 m/s	73 %	11 %	12 %	4 %
Oct. – Dec. 2004	5.50 m/s	63 %	16 %	19 %	2 %
Year (total)	6.83 m/s	67 %	14 %	16 %	3 %
Jan. – March 2005	6.08 m/s	50 %	12 %	35 %	3 %
April – June 2005	6.22 m/s	77 %	8 %	12 %	3 %
July – Sep. 2005	7.57 m/s	71 %	4 %	21 %	4 %
Oct. – Dec. 2005	5.57 m/s	59 %	14 %	25 %	2 %
Year (total)	6.36 m/s	64 %	10 %	23 %	3 %
Jan. – March 2006	5.83 m/s	57 %	19 %	23 %	1 %
April – June 2006	6.67 m/s	71 %	10 %	18 %	1 %
July – Sep. 2006	7.25 m/s	67 %	8 %	20 %	5 %
Oct. – Dec. 2006	5.76 m/s	57 %	13 %	28 %	2 %
Year (total)	6.37 m/s	63 %	13 %	22 %	2 %
Jan. – March 2007	6.00 m/s	69 %	14 %	14 %	3 %
April – June 2007	9.31 m/s	84 %	3 %	12 %	1 %
July – Sep. 2007	7.51 m/s	81 %	7 %	8 %	3 %
Oct. – Dec. 2007	6.74 m/s	61 %	10 %	27 %	1 %
Year (total)	7.39 m/s	74 %	9 %	15 %	2 %

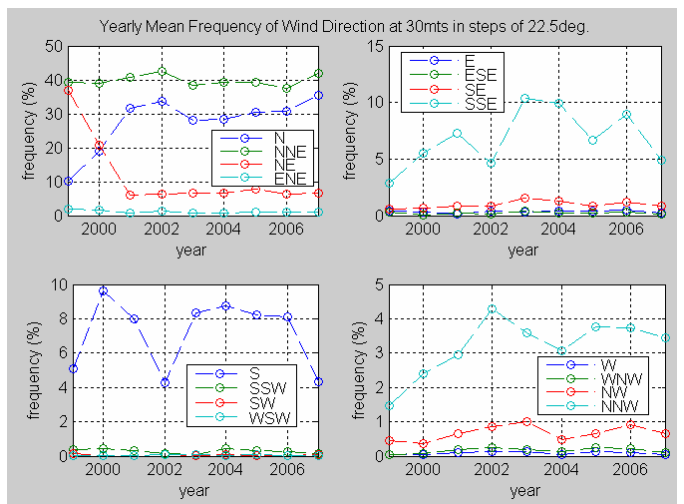
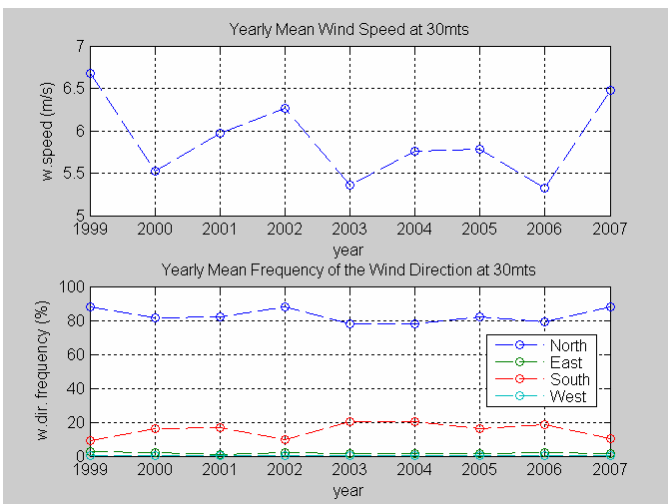
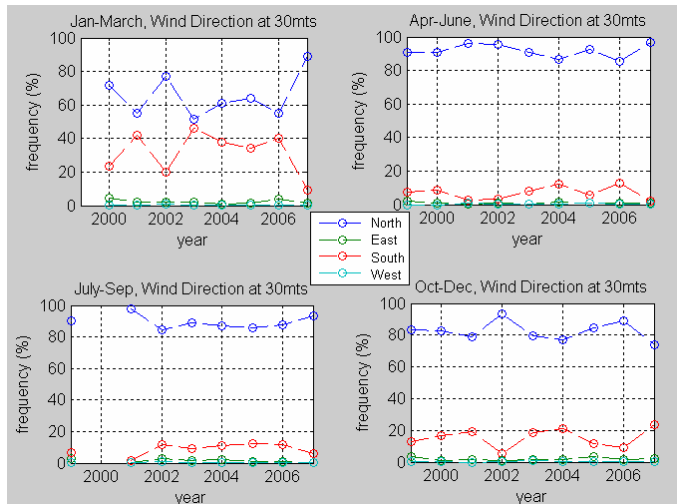
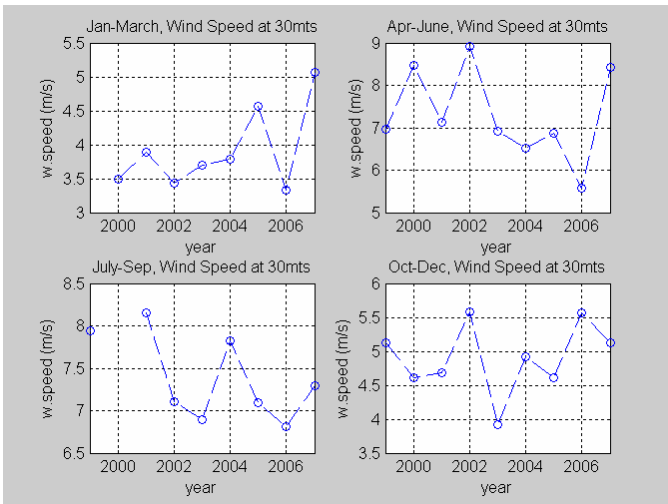
LA SILLA, Seasonal meteo. Statistics (Night Only)





La Silla, Seasonal Mean Temperature and Relative Humidity (Night time only):

	Temp. 30mts	Temp. 2mts	RH 2mts
Jan. – March 1999	No data from sensor	No data from sensor	No from sensor
April – June 1999	10.38 °C	10.91 °C	29 %
July – Sep. 1999	8.38 °C	8.95 °C	30 %
Oct. – Dec. 1999	10.67 °C	10.99 °C	44 %
Year (total)	9.81 °C	10.28 °C	34 %
Jan. – March 2000	12.81 °C	12.95 °C	57 %
April – June 2000	9.01 °C	9.59 °C	42 %
July – Sep. 2000	8.02 °C	8.48 °C	34 %
Oct. – Dec. 2000	11.87 °C	12.17 °C	30 %
Year (total)	10.43 °C	10.78 °C	41 %
Jan. – March 2001	13.76 °C	13.90 °C	49 %
April – June 2001	9.95 °C	10.52 °C	34 %
July – Sep. 2001	8.07 °C	8.56 °C	33 %
Oct. – Dec. 2001	12.66 °C	12.95 °C	38 %
Year (total)	11.11 °C	11.48 °C	38 %
Jan. – March 2002	13.66 °C	13.81 °C	55 %
April – June 2002	9.54 °C	10.09 °C	41 %
July – Sep. 2002	8.61 °C	9.08 °C	35 %
Oct. – Dec. 2002	11.96 °C	12.36 °C	39 %
Year (total)	10.94 °C	11.33 °C	43 %
Jan. – March 2003	14.57 °C	14.82 °C	49 %
April – June 2003	11.79 °C	12.32 °C	28 %
July – Sep. 2003	9.58 °C	10.04 °C	28 %
Oct. – Dec. 2003	13.20 °C	13.41 °C	38 %
Year (total)	12.28 °C	12.65 °C	35 %
Jan. – March 2004	14.12 °C	14.30 °C	52 %
April – June 2004	10.52 °C	10.96 °C	34 %
July – Sep. 2004	8.89 °C	9.39 °C	37 %
Oct. – Dec. 2004	12.03 °C	12.27 °C	42 %
Year (total)	11.39 °C	11.73 °C	41 %
Jan. – March 2005	14.03 °C	14.21 °C	53 %
April – June 2005	10.30 °C	10.73 °C	36 %
July – Sep. 2005	8.21 °C	8.64 °C	38 %
Oct. – Dec. 2005	11.57 °C	11.84 °C	43 %
Year (total)	11.03 °C	11.35 °C	43 %
Jan. – March 2006	14.39 °C	14.55 °C	56 %
April – June 2006	12.08 °C	12.49 °C	32 %
July – Sep. 2006	10.03 °C	10.57 °C	33 %
Oct. – Dec. 2006	12.19 °C	12.74 °C	41 %
Year (total)	12.17 °C	12.59 °C	41 %
Jan. – March 2007	12.62 °C	13.26 °C	59 %
April – June 2007	9.19 °C	9.92 °C	38 %
July – Sep. 2007	6.99 °C	7.75 °C	31
Oct. – Dec. 2007	11.19 °C	11.69 °C	43
Year (total)	10.00 °C	10.65 °C	43 %



La Silla Seasonal Mean Wind Speed and Frequency of the Wind Direction (Night time only).

	W.speed 30mts	W.dir (North)	W.dir (East)	W.dir (South)	Wdir (West)
Jan. – March 1999	No data from sensor	No data from sensor	No data from sensor	No data from sensor	No data from sensor
April – June 1999	6.97 m/s	91 %	2 %	7 %	0 %
July – Sep. 1999	7.94 m/s	90 %	3 %	7 %	0 %
Oct. – Dec. 1999	5.12 m/s	84 %	3 %	13 %	0 %
Year (total)	6.68 m/s	88 %	3 %	9 %	0 %
Jan. – March 2000	3.49 m/s	72 %	4 %	24 %	0 %
April – June 2000	8.47 m/s	90 %	1 %	9 %	0 %
July – Sep. 2000	No data from sensor	No data from sensor	No data from sensor	No data from sensor	No data from sensor
Oct. – Dec. 2000	4.61 m/s	82 %	1 %	17 %	0 %
Year (total)	5.52 m/s	81 %	2 %	17 %	0 %
Jan. – March 2001	3.89 m/s	55 %	2 %	42 %	1 %
April – June 2001	7.12 m/s	96 %	0 %	3 %	1 %
July – Sep. 2001	8.16 m/s	98 %	0%	2 %	0%
Oct. – Dec. 2001	4.69 m/s	79 %	2 %	19 %	0 %
Year (total)	5.96 m/s	82 %	1 %	17 %	0 %
Jan. – March 2002	3.43 m/s	77 %	2 %	20 %	1 %
April – June 2002	8.90 m/s	96 %	1 %	3 %	0 %
July – Sep. 2002	7.11 m/s	85 %	3 %	11 %	1 %
Oct. – Dec. 2002	5.59 m/s	94 %	1 %	5 %	0 %
Year (total)	6.26 m/s	88 %	2 %	10 %	0 %
Jan. – March 2003	3.70 m/s	52 %	2 %	46 %	0 %
April – June 2003	6.90 m/s	91 %	0 %	8 %	1 %
July – Sep. 2003	6.90 m/s	89 %	1 %	9 %	0 %
Oct. – Dec. 2003	3.92 m/s	79 %	2 %	18 %	1 %
Year (total)	5.35 m/s	78 %	2 %	20 %	0 %
Jan. – March 2004	3.79 m/s	61 %	1 %	38 %	0 %
April – June 2004	6.52 m/s	86 %	2 %	12 %	0 %
July – Sep. 2004	7.82 m/s	87 %	2 %	11 %	0 %
Oct. – Dec. 2004	4.92 m/s	77 %	2 %	21 %	0 %
Year (total)	5.75 m/s	78 %	2 %	20 %	0 %
Jan. – March 2005	4.56 m/s	64 %	2 %	34 %	0 %
April – June 2005	6.86 m/s	92 %	1 %	6 %	1 %
July – Sep. 2005	7.10 m/s	86 %	1 %	12 %	1 %
Oct. – Dec. 2005	4.61 m/s	85 %	3 %	12 %	0 %
Year (total)	5.78 m/s	82 %	2 %	16 %	0 %
Jan. – March 2006	3.33 m/s	55 %	4 %	40 %	1 %
April – June 2006	5.57 m/s	86 %	1 %	13 %	0 %
July – Sep. 2006	6.81 m/s	87 %	1 %	12 %	0 %
Oct. – Dec. 2006	5.57 m/s	89 %	2 %	9 %	0 %
Year (total)	5.32 m/s	79 %	2 %	19 %	0 %
Jan. – March 2007	5.07 m/s	89 %	2 %	9 %	0 %
April – June 2007	8.42 m/s	97 %	1 %	2 %	0 %
July – Sep. 2007	7.30 m/s	93 %	1 %	6 %	0 %
Oct. – Dec. 2007	5.13 m/s	74 %	2 %	24 %	0 %
Year (total)	6.48 m/s	88 %	2 %	10 %	0 %

