

# ALE



SMARTER, SAFER, STRONGER

## THE EUROPEAN EXTREMELY LARGE TELESCOPE ("E-ELT") PROJECT

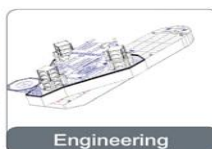
Uwe Richter

LIFTING TRANSPORTATION SKIDDING JACKING  
ENGINEERING

### Services



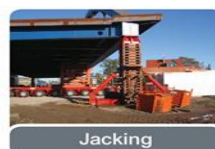
Ballasting



Engineering



Heavy Crane Lifting



Jacking



Lifting Systems



Load-in & Load-out



Logistics



Skidding



Transportation



Turnkey Projects



Weighing

WORLDWIDE HEAVY TRANSPORTATION AND LIFTING

[WWW.ALE-HEAVYLIFT.COM](http://WWW.ALE-HEAVYLIFT.COM)  
[INFO@ALE-HEAVYLIFT.COM](mailto:INFO@ALE-HEAVYLIFT.COM)

ALE   
SMARTER, SAFER, STRONGER

## Equipment – Cranes

We are proud to have introduced the world's highest-capacity land-based cranes, the innovative AL.SK fleet. The 4,300te-capacity AL.SK190, with a load moment of 190.000tm and the 5,000te-capacity AL.SK350, with a load moment of 354,000tm – more than double the load moment of its closest rival.



WORLDWIDE HEAVY TRANSPORTATION AND LIFTING

WWW.ALE-HEAVYLIFT.COM  
INFO@ALE-HEAVYLIFT.COM

ALE   
SMARTER. SAFER. STRONGER

## Equipment

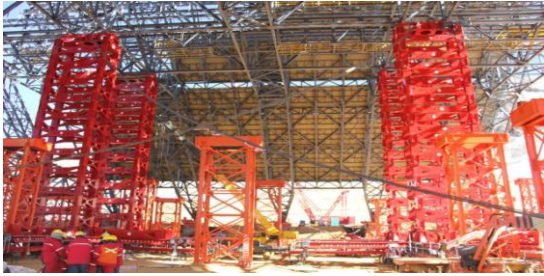


WORLDWIDE HEAVY TRANSPORTATION AND LIFTING

WWW.ALE-HEAVYLIFT.COM  
INFO@ALE-HEAVYLIFT.COM

ALE   
SMARTER. SAFER. STRONGER

## MEGAJACK-System up to 60.000 t capacity



WORLDWIDE HEAVY TRANSPORTATION AND LIFTING

[WWW.ALE-HEAVYLIFT.COM](http://WWW.ALE-HEAVYLIFT.COM)  
[INFO@ALE-HEAVYLIFT.COM](mailto:INFO@ALE-HEAVYLIFT.COM)

**ALE**   
SMARTER. SAFER. STRONGER