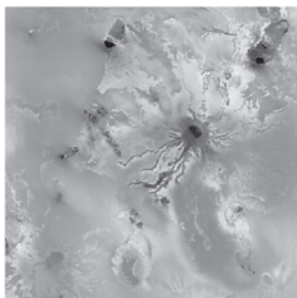
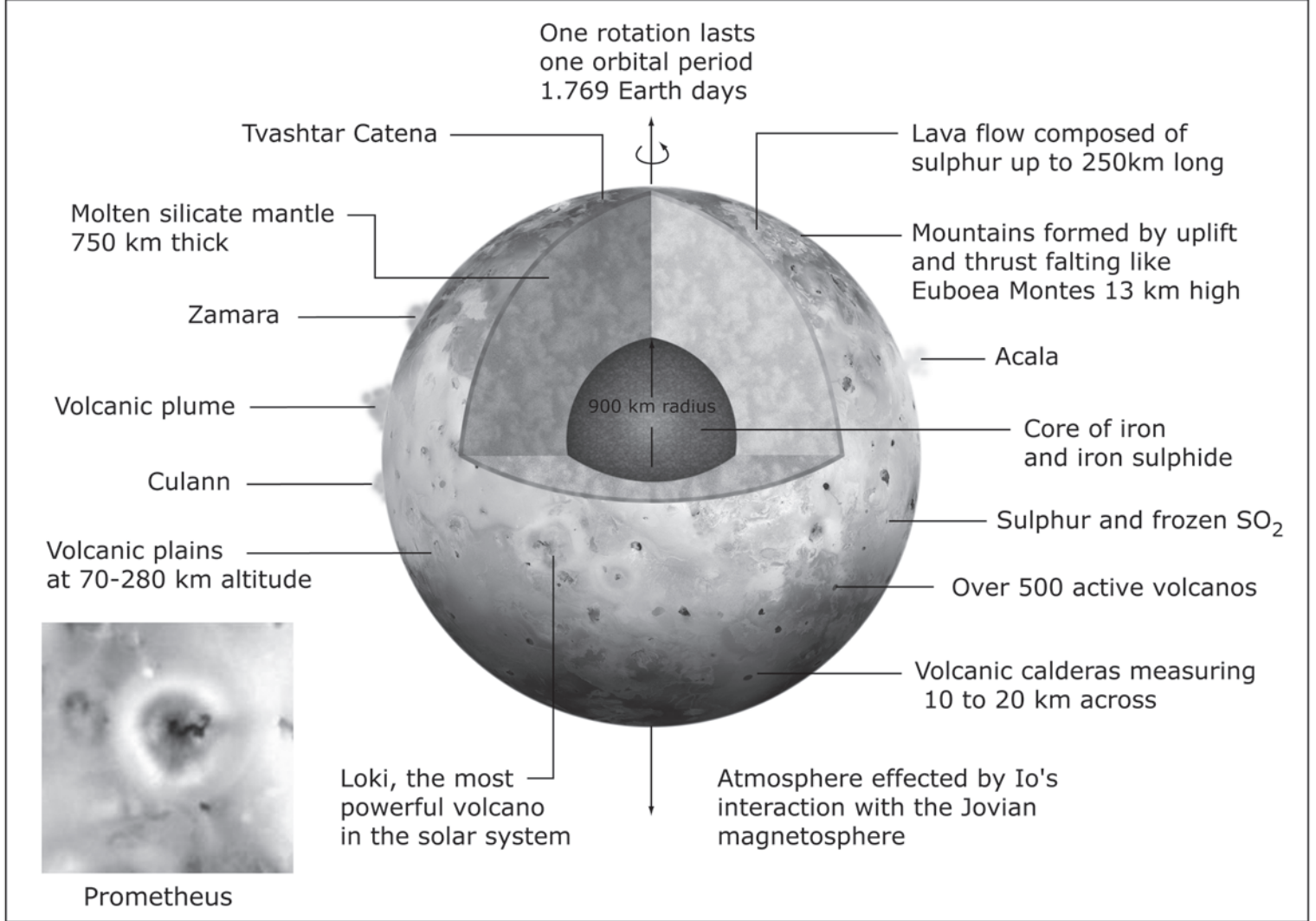
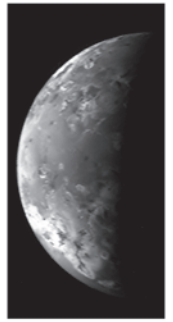


# Summary Information Sheet

## IO

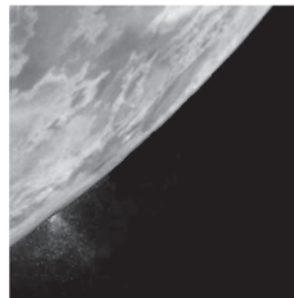
Io is the third largest moon of Jupiter and the innermost of the Galilean satellites. Its surface is covered by deposits from erupting volcanos, lava flows and volcanic vents. They are the result of heat released by tidal forces which squeeze this moon as it moves closer to and further away from Jupiter in its orbit.



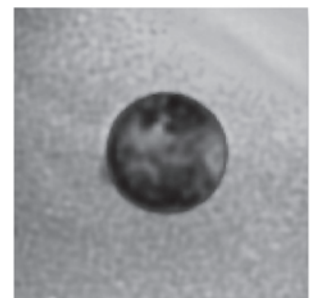
Io Volcano with lava flow: Ra Patera



Io volcanic crater



Eruption



Eruption plume observed by HST

### Physical Data

Property
Dist. from central body
Orbital period
Equatorial radius
Mass
Density

Io
422,000 km
1,77 days
1820 km
$4,7 \times 10^{15}$ kg
$3530 \text{ kg/m}^3$

### For comparison

Moon
384,000 km
27 days 8 hrs
1738 km
$7.35 \times 10^{22}$ kg
$3340 \text{ kg/m}^3$

Mercury
58 million km
59 days
2240 km
$3.30 \times 10^{23}$ kg
$5430 \text{ kg/m}^3$