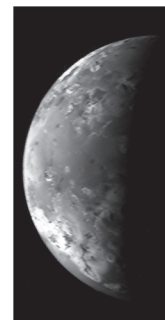




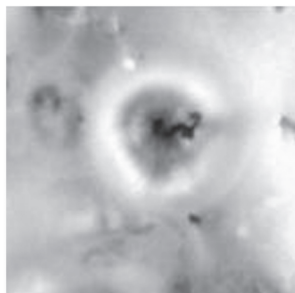
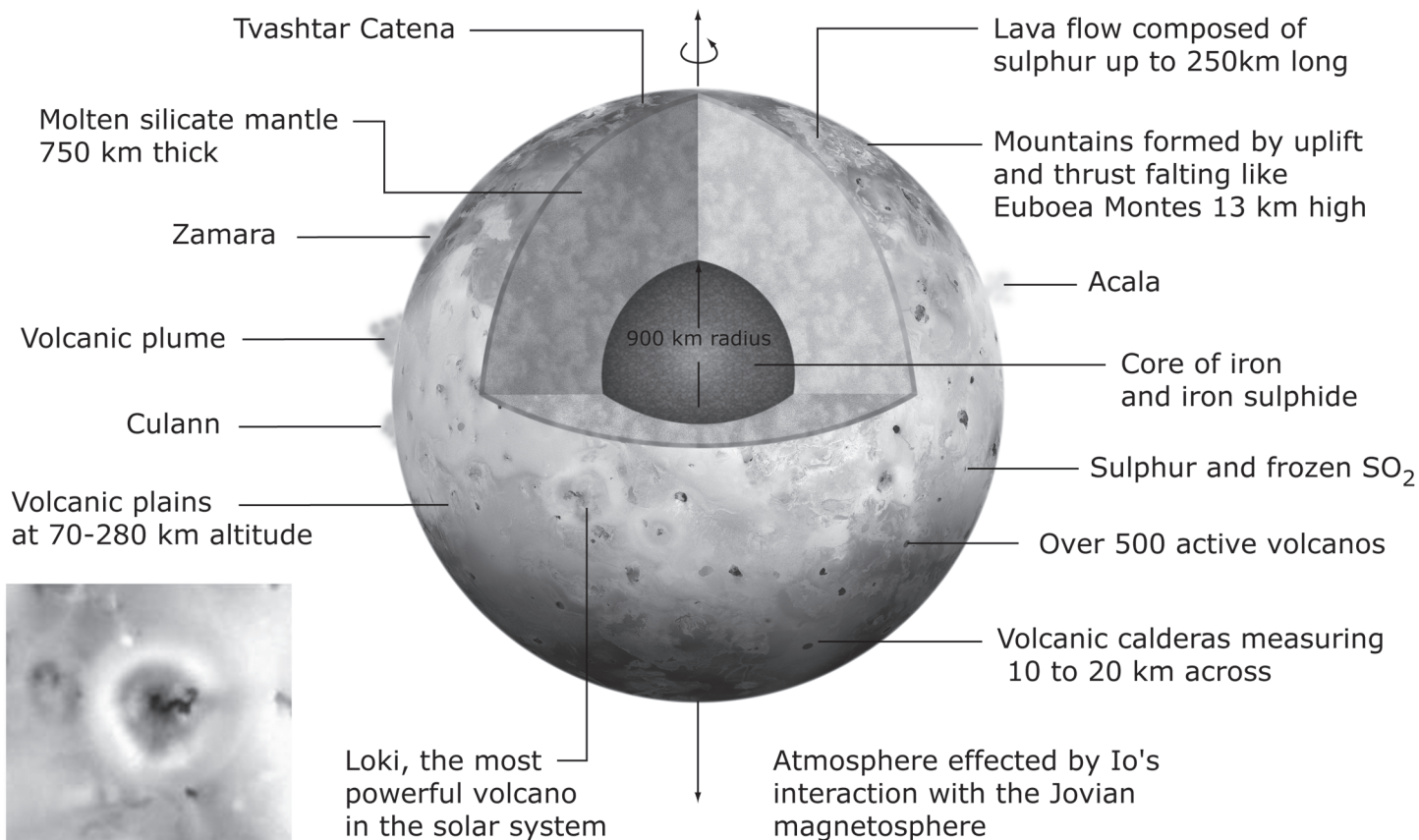
Summary Information Sheet

IO

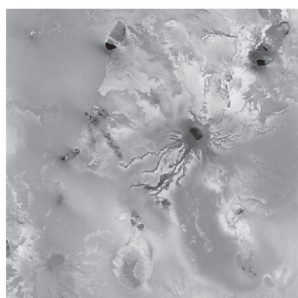
Io is the third largest moon of Jupiter and the innermost of the Galilean satellites. Its surface is covered by deposits from erupting volcanos, lava flows and volcanic vents. They are the result of heat released by tidal forces which squeeze this moon as it moves closer to and further away from Jupiter in its orbit.



One rotation lasts
one orbital period
1.769 Earth days



Prometheus



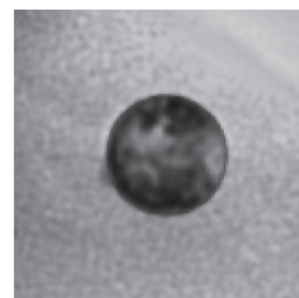
Io Volcano with lava flow: Ra Patera



Io volcanic crater



Eruption



Eruption plume observed by HST

Physical Data

Property	
Dist. from central body	
Orbital period	
Equatorial radius	
Mass	
Density	

Io	
422,000 km	
1,77 days	
1820 km	
$4,7 \times 10^{15}$ kg	
3530 kg/m^3	

For comparison

Moon	
384,000 km	
27 days 8 hrs	
1738 km	
7.35×10^{22} kg	
3340 kg/m^3	

Mercury	
58 million km	
59 days	
2240 km	
3.30×10^{23} kg	
5430 kg/m^3	