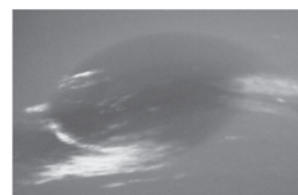
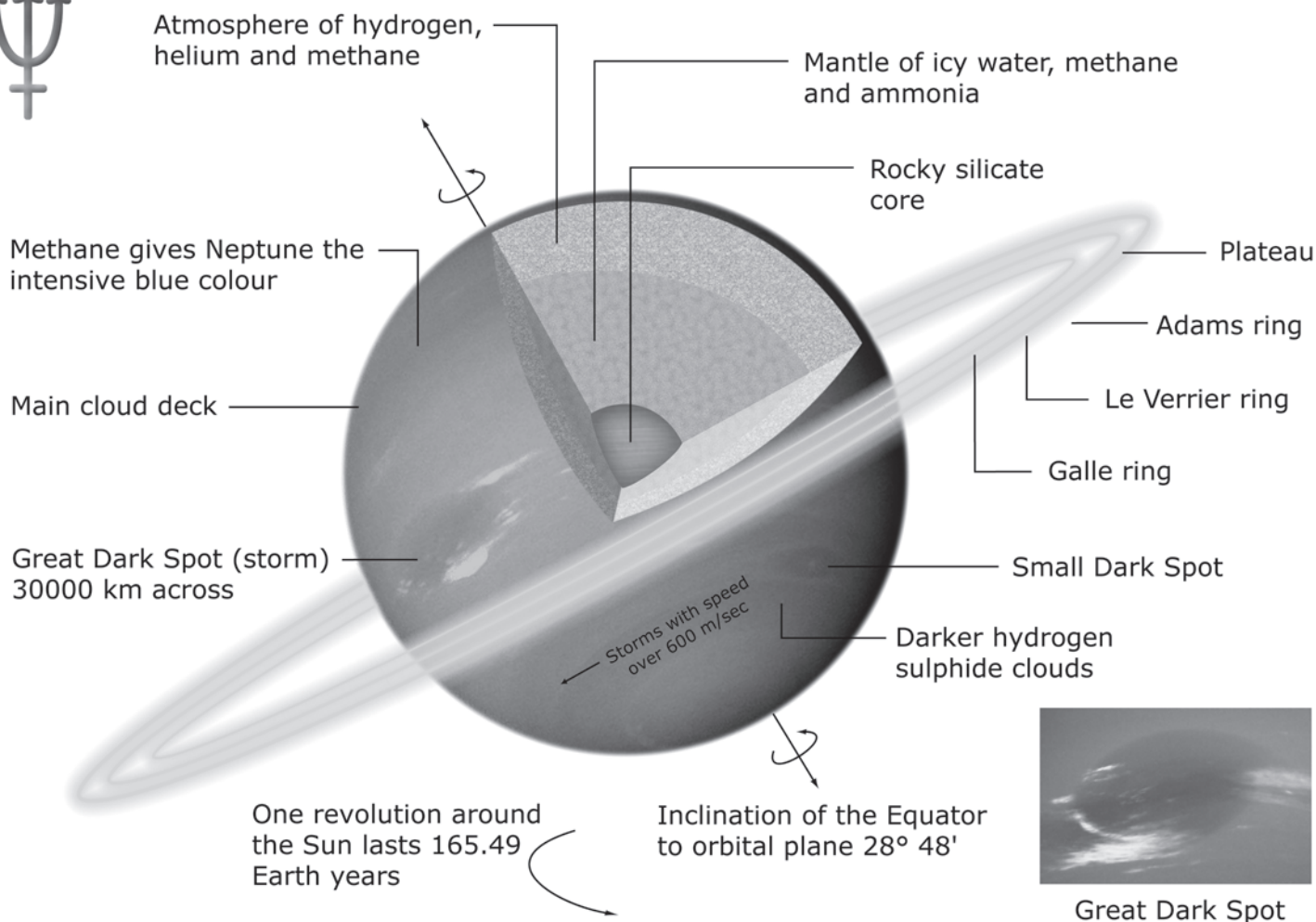
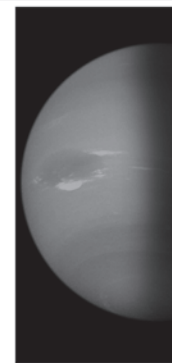
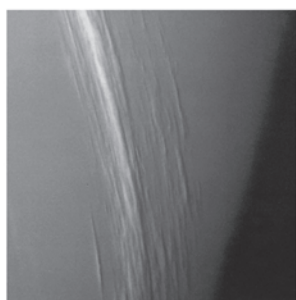


# NEPTUNE

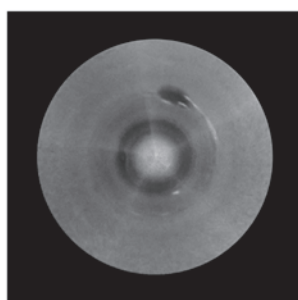
Neptune, named after the Roman god of the sea, is the eighth major planet from the Sun and the most distant gas giant. It was discovered in 1846 because of its gravitational effects on the orbit of Uranus. A fascinating feature in its atmosphere is the Great Dark Spot, which rotates around the planet.



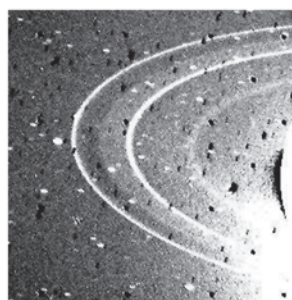
Great Dark Spot



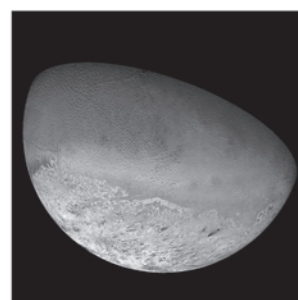
Clouds



South Pole



Rings



Triton

## Physical Data

## For comparison

Property	Neptune	Uranus	Earth
Distance from the Sun	4509 million km	2884 million km	150 million km
Rotation period	16 hrs 03 min	17 hrs 14 min	23 hrs 56 min
Equatorial radius	24764 km	25559 km	6378 km
Mass	$1.02 \times 10^{26}$ kg	$8.68 \times 10^{25}$ kg	$5.97 \times 10^{24}$ kg
Density	$1760 \text{ kg/m}^3$	$1300 \text{ kg/m}^3$	$5520 \text{ kg/m}^3$
Satellites	12 <sup>+</sup>	25 <sup>+</sup>	1