

ESO, the European Southern Observatory, was created in 1962 to . . . establish and operate an astronomical observatory in the southern hemisphere, equipped with powerful instruments, with the aim of furthering and organizing collaboration in astronomy . . . It is supported by six countries: Belgium, Denmark, France, the Federal Republic of Germany, the Netherlands and Sweden. It now operates the La Silla observatory in the Atacama desert, 600 km north of Santiago de Chile, at 2,400 m altitude, where ten telescopes with apertures up to 3.6 m are presently in operation. The astronomical observations on La Silla are carried out by visiting astronomers—mainly from the member countries—and, to some extent, by ESO staff astronomers, often in collaboration with the former.

The ESO Headquarters in Europe will be located in Garching, near Munich, where in September 1980 all European activities will be centralized. The Office of the Director-General (mainly the ESO Administration) is already in Garching, whereas the Scientific-Technical Group is still in Geneva, at CERN (European Organization for Nuclear Research), which since 1970 has been the host Organization of ESO's 3.6-m Telescope Project Division.

ESO has about 120 international staff members in Europe and Chile and about 150 local staff members in Santiago and on La Silla. In addition, there are a number of fellows and scientific associates.

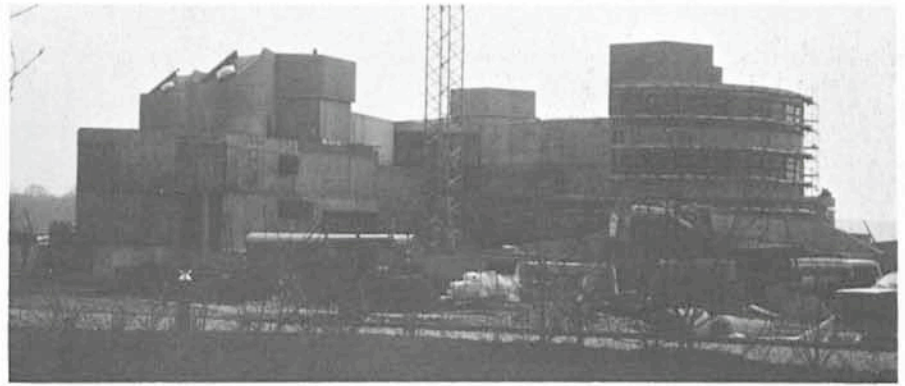
The ESO MESSENGER is published in English four times a year: in March, June, September and December. It is distributed free to ESO employees and others interested in astronomy.

The text of any article may be reprinted if credit is given to ESO. Copies of most illustrations are available to editors without charge.

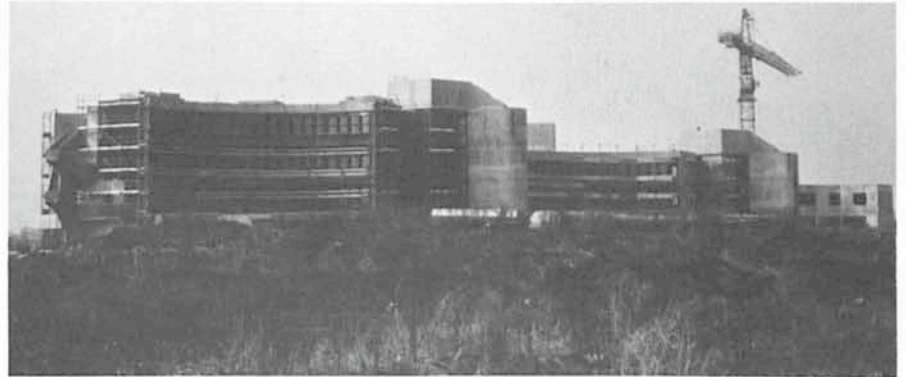
Technical editor: Kurt Kjær

EUROPEAN
SOUTHERN OBSERVATORY
Schleißheimer Straße 17
D-8046 Garching b. München
Fed. Rep. of Germany
Tel. (089) 3204041-45
Telex 0521 5915 eso d

Printed by Universitätsdruckerei
Dr. C. Wolf & Sohn
Heidemannstraße 166
8000 München 45
Fed. Rep. of Germany



Northern part of the site with entrance to the Headquarters. / Lado norte de la sede principal de ESO con la entrada principal.



View of the building taken from east. / Vista del edificio tomada del lado este.

ALGUNOS RESUMENES

Italia y Suiza aceptadas como miembros de la ESO

En una sesión especial celebrada en Ginebra el día 26 de marzo el Consejo de la ESO aceptó por unanimidad a Italia y Suiza como nuevos estados miembros de la organización. Una vez que los procedimientos necesarios para la ratificación por las Cámaras de ambos países hayan sido concluidos con éxito, podrían ellos ser asociados efectivamente a principios del año 1981.

De acuerdo a la Convención de ESO, los nuevos estados miembros deben pagar una contribución especial que corresponde a su parte de las inversiones efectuadas en el pasado. Al fijar la suma de dicha contri-

bución el Consejo de ESO decidió que ésta sería utilizada para construir un telescopio de 3,5 metros que podría ser terminado dentro de cinco años una vez aprobado el proyecto.

La sede principal de la ESO estará terminada muy pronto

La construcción del edificio para la sede principal de la ESO en Garching ha avanzado enormemente en estos últimos meses. Los trabajos exteriores están casi terminados y actualmente se concentran en las instalaciones técnicas en el interior del edificio.

Tanto en esta página como en la página 11 se muestran algunas fotografías del edificio tomadas el día 24 de marzo.

Contents

L. Woltjer: Italy and Switzerland to Become Members of ESO	1
P. A. Wehinger, T. Gehren and S. Wyckoff: Quasars Resolved	1
R. M. West: Change in "Messenger" Editorship	3
ESO ST Workshop No. 1: Dwarf Galaxies: The Need for Coordinated Space and Ground-based Observations	4
List of Preprints Published at ESO Scientific Group	4
Visiting Astronomers	4
One of the Founders of ESO Receives ADION Medal for 1978	5
Fifth European Regional Meeting	5
A. Terzan and K. H. Ju: A Photometric Study of the Bright Cloud B in Sagittarius: III	6
Tentative Time-table of Council Sessions and Committee Meetings	7
ESO Slides and ESO Publications	7
Personnel Movements	7
M.-H. Ulrich: Observing Elliptical Galaxies with the IPCS	8
Proceedings of the ESO Workshop on Two Dimensional Photometry Soon Available	9
ESO Headquarters Building Nearing Completion	11
Algunos Resúmenes	12