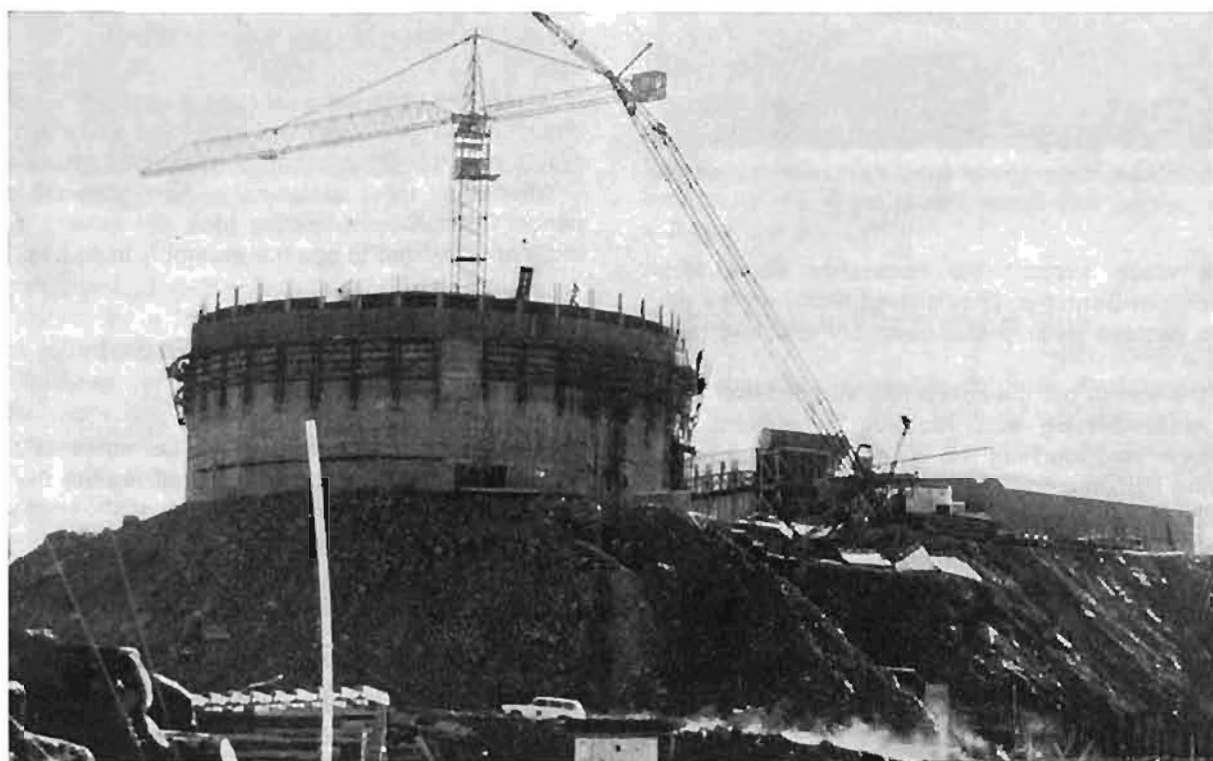


## Second Users Meeting

The ESO Second Users Meeting was held on August 30, 1974, at CERN, Geneva, where visiting astronomers from all ESO member states were invited to provide the Directorate of ESO and the Observing Programmes Committee with suggestions for astronomical and administrative improvements. Thirteen astronomers together with eight ESO officials from Hamburg and

Santiago, five from the ESO TP Division and five members of the Observing Programmes Committee attended the meeting. After the introduction by the Director-General, Prof. A. Blaauw, who acted as Chairman, Prof. Westerlund gave a brief review of the status of the ESO telescope park and auxiliary instrumentation. The Chairman of the Observing Programmes Committee, Prof. Ledoux, reported on the activities of the Committee and the Leader of the TP Division, Dr. S. Laustsen, on the status of the 3.6 m telescope project.



## Avanti for the Telescope Building

Started in June 1973, the construction programme of the ESO TP Division is running smoothly and almost on time.

The concrete work on the 3.6 m telescope building was finished at the end of January this year. The Dutch firm, Interbeton, has poured in 3000 m<sup>3</sup> of concrete and placed in position 350 tons reinforcing material in 18 months. The biggest job was pouring the big concrete slab which will support the telescope itself and the two large coudé laboratories: the 250 m<sup>3</sup> of concrete poured in two days (September 5 and 6) exceeded the normal European production. From January, 1975, further contractors will be arriving on La Silla: Krupp, in charge of the dome construction and erection (350 tons of steel), and Sulzer Bros. in charge of the air conditioning system. At the end of 1975, the building should be ready for the installation of the telescope.

At the same time, the Danish 1.5 m telescope building is rising close to the GPO (Grand Prisme Objectif). Its concrete structure was finished at the end of 1974 and the plastic dome erection started early this year. The control system is currently being constructed and assembled in Geneva.

At present, six people from ESO/TP (La Silla) are supervising 160 workers on the mountain. The difficulties of the first months have been forgotten and everybody is working ahead towards the inauguration of ESO's giant telescope.

E. L.

## Assembly of 3.6 m Telescope Nears Completion

The assembly for the large telescope was started in the autumn of 1974 at the factory of Creusot-Loire in Saint-Chamond, near Lyons, France. Before that time the firm had increased the depth of the big assembly hole in order to house the full size of the telescope under the roof. The crane there is powerful enough to handle the big pieces, but does not reach high enough for the final erection of the tube.

After the test of the individual pieces of the structure, the assembly phase was started by putting the pedestal into the assembly hole. This hole is so deep that the whole pedestal disappeared beneath floor level.

From Allerups in Denmark come the handling devices for the erection of the telescope. These pieces have been used to place the polar axis in position. The