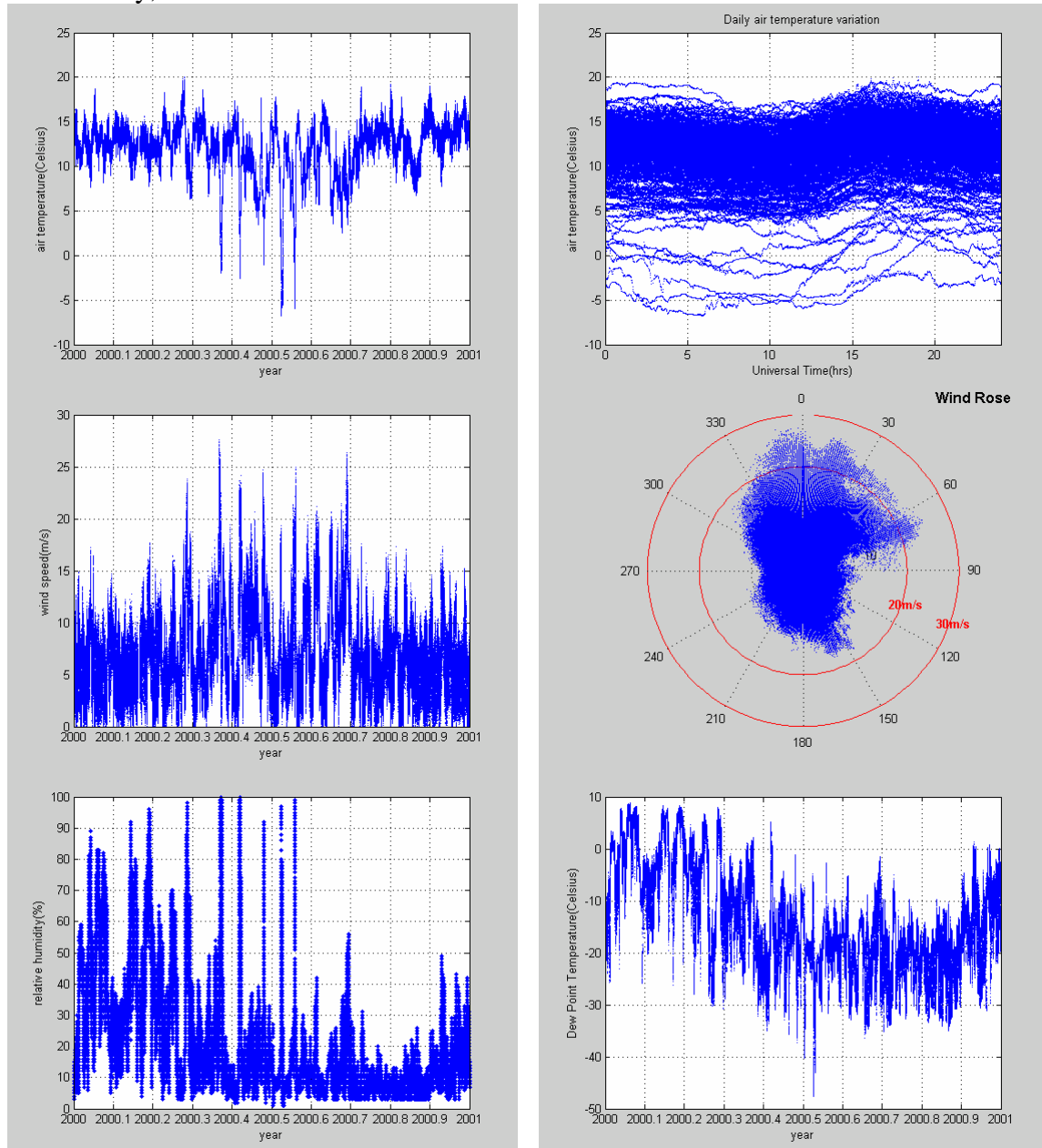


Wind, Air Temperature and Relative Humidity Statistics at Paranal, 2000 to 2005

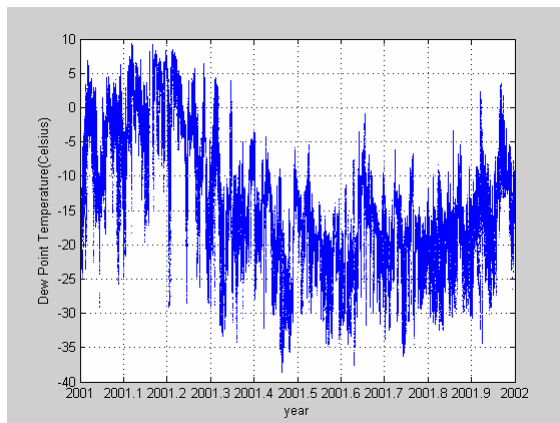
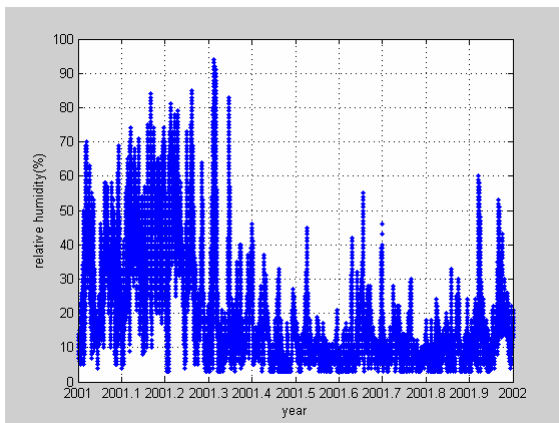
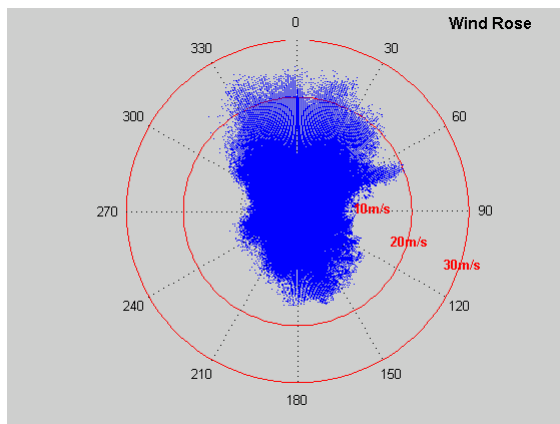
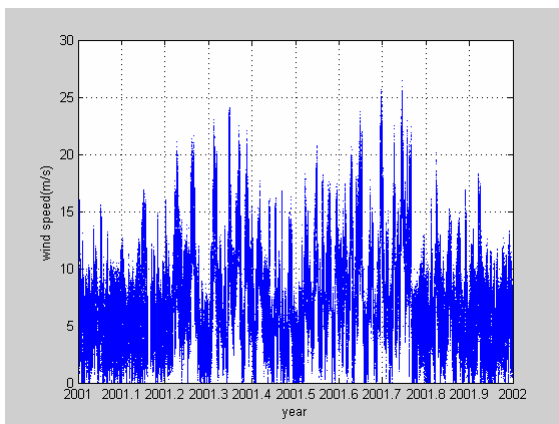
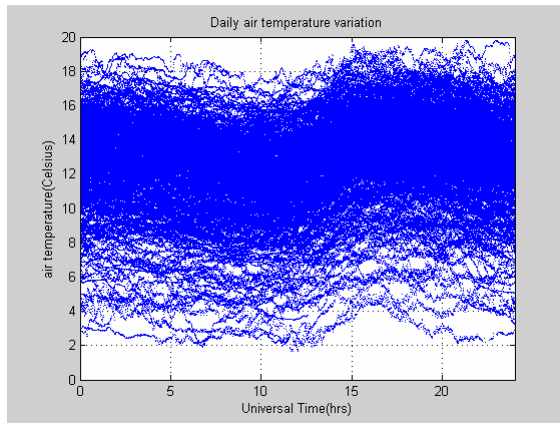
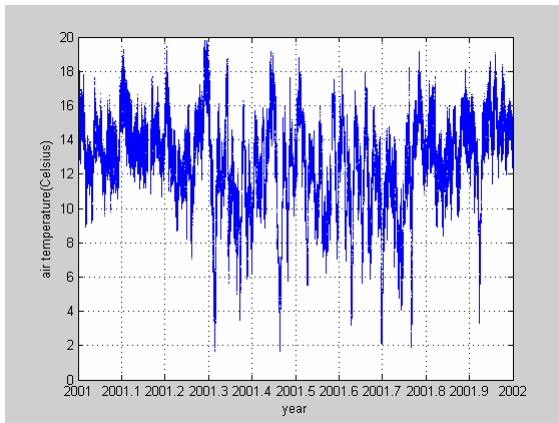
Julio Navarrete, La Silla-Paranal Observatory

16 February, 2006



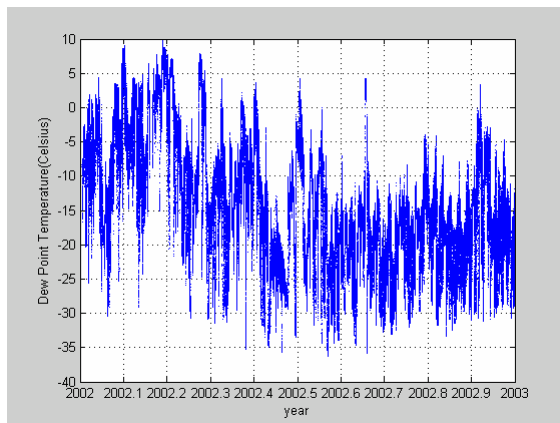
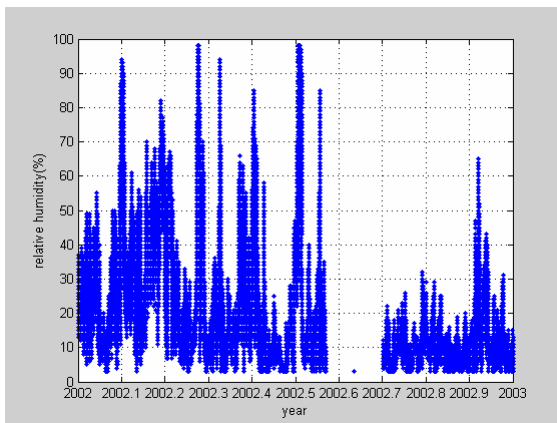
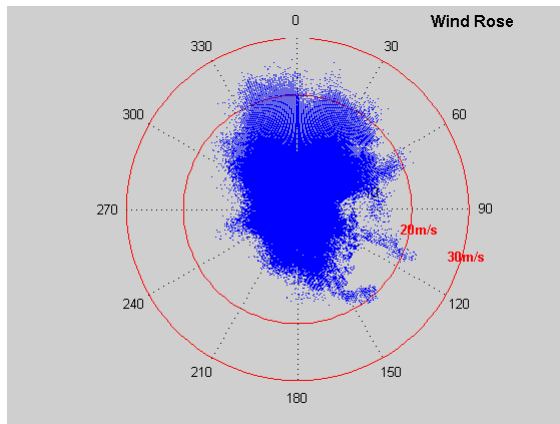
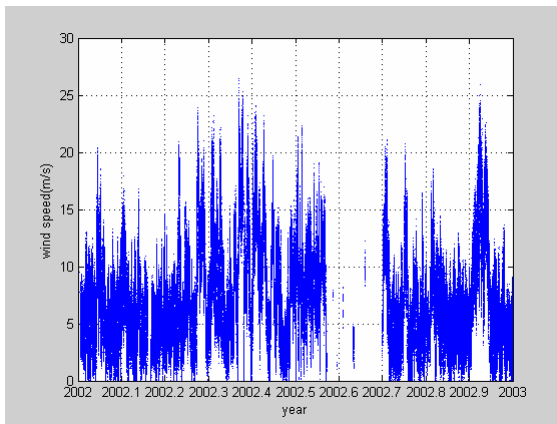
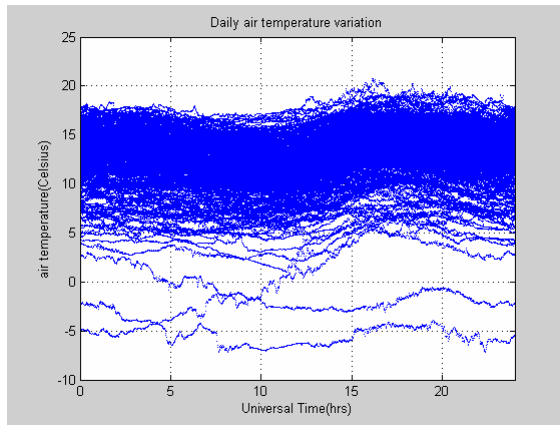
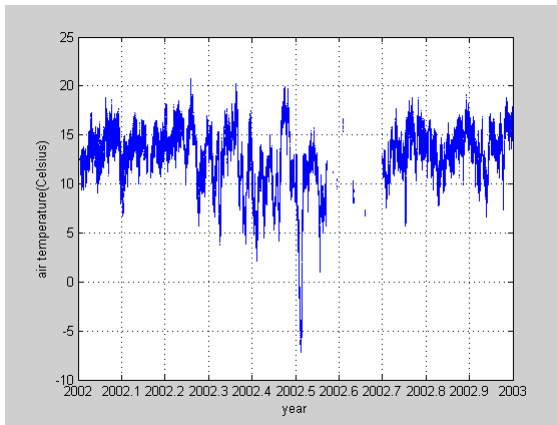
Wind, Temperature and Relative Humidity Statistics, Paranal 2000

	<i>minimum</i>	<i>5%</i>	<i>median</i>	<i>average</i>	<i>95%</i>	<i>maximum</i>	<i>samples</i>
Temperature at 30m.	-6.74	5.99	12.42	11.83	15.69	20.08	518674
Temperature at 2m	-7.34	5.81	12.61	12.04	16.49	22.27	518674
Relative Humidity at 30m	1	4	13	21	65	100	518674
Relative Humidity at 2m	1	4	14	21	64	100	518674
Dew Point Temp. at 30m	-47.65	-29.30	-15.23	-13.80	4.75	8.84	518674
Wind speed at 30m	0	1.43	6.2	6.97	15.07	27.6	518674
Wind speed at 10m	0	1.3	6.2	6.98	15.38	29.58	518674



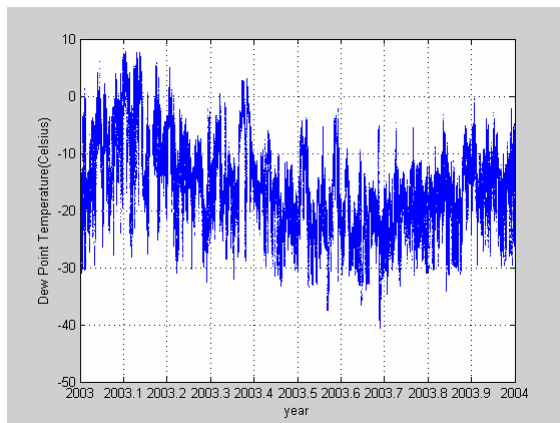
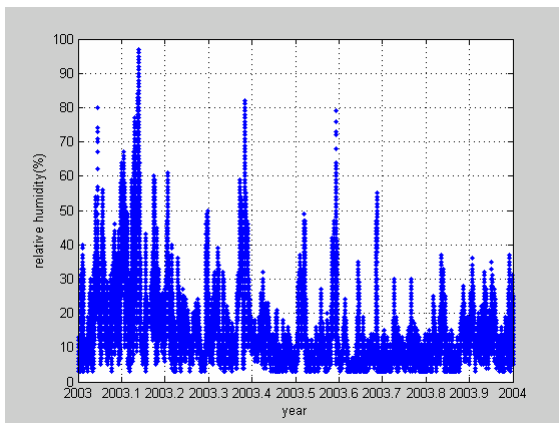
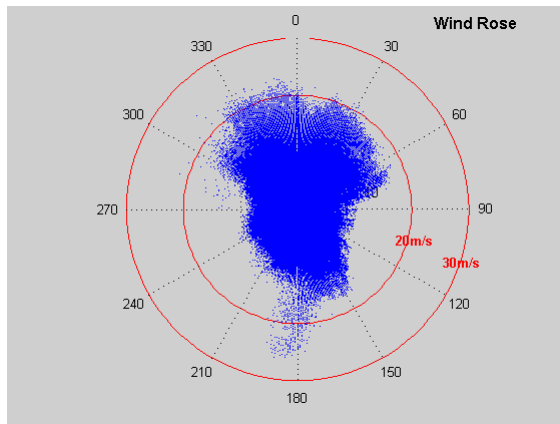
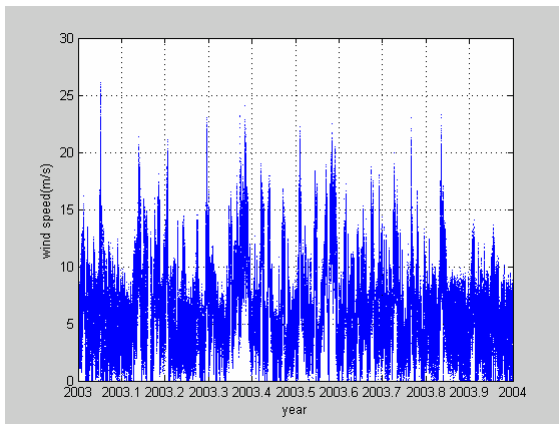
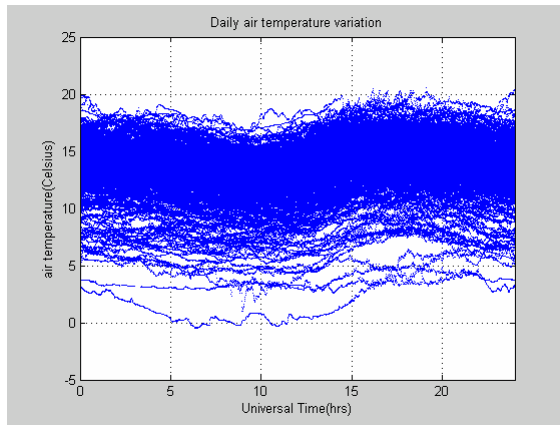
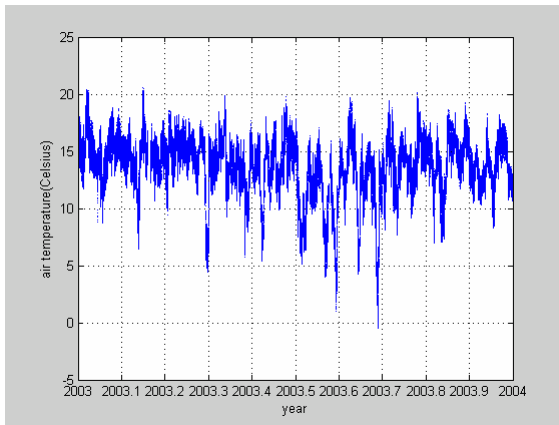
Wind, Temperature and Relative Humidity Statistics, Paranal 2001

	<i>minimum</i>	<i>5%</i>	<i>median</i>	<i>average</i>	<i>95%</i>	<i>maximum</i>	<i>samples</i>
Temperature at 30m	1.66	7.47	12.95	12.58	16.44	19.82	508279
Temperature at 2m	0.04	7.32	13.11	12.78	17.16	21.36	508279
Relative Humidity at 30m	3	4	13	19	53	94	508279
Relative Humidity at 2m	3	4	13	19	52	97	508279
Dew Point Temp. at 30m	-38.62	-28.80	-15.40	-13.87	3.54	9.29	508279
Wind speed at 30m	0	1.48	6.22	6.93	15.05	26.48	508279
Wind speed at 10m	0	1.38	6.2	6.9	15.18	28.2	508279



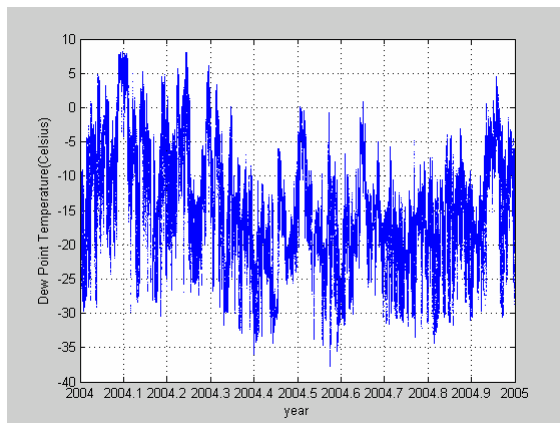
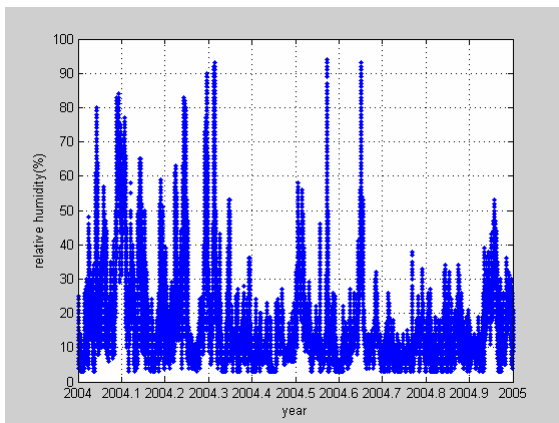
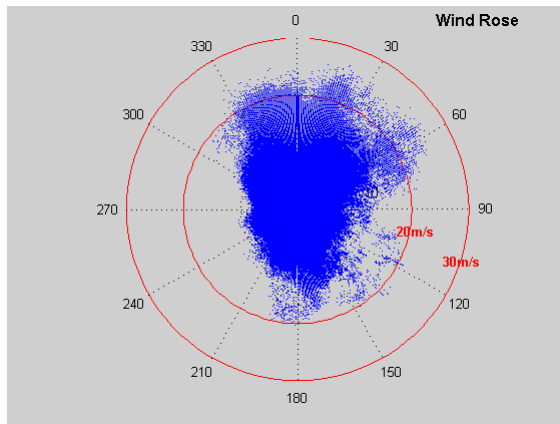
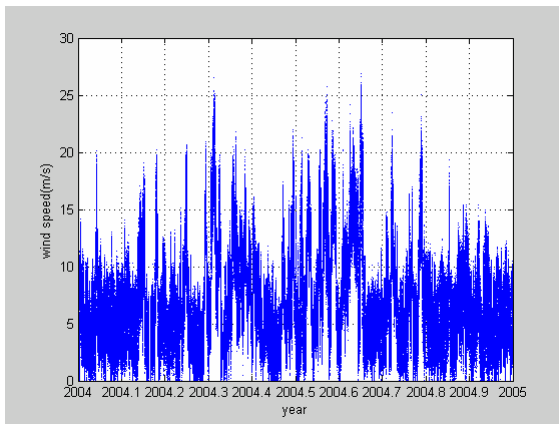
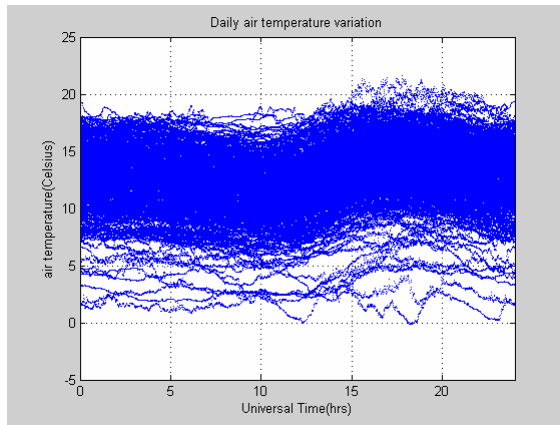
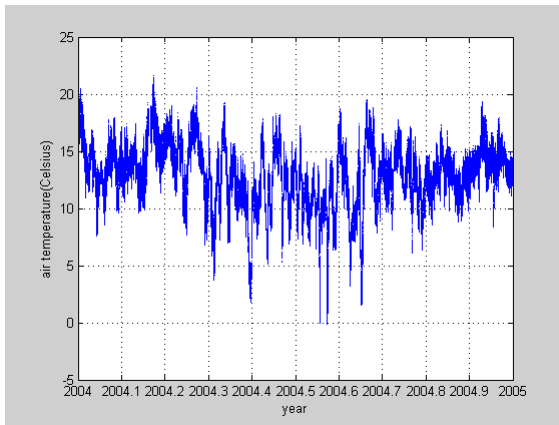
Wind, Temperature and Relative Humidity Statistics, Paranal 2002

	<i>minimum</i>	<i>5%</i>	<i>median</i>	<i>average</i>	<i>95%</i>	<i>maximum</i>	<i>samples</i>
Temperature at 30m	-7.23	6.97	13.18	12.67	16.57	20.77	447172
Temperature at 2m	-7.94	6.75	13.39	12.87	17.33	22.76	447172
Relative Humidity at 30m	3	4	13	20	57	98	447172
Relative Humidity at 2m	3	4	13	20	57	99	447172
Dew Point Temp. at 30m	-36.22	-28.34	-15.47	-14.25	2.89	9.89	447172
Wind speed at 30m	0	1.6	6.33	7.16	15.38	26.43	447172
Wind speed at 10m	0	1.45	6.28	7.11	15.63	27.75	447172



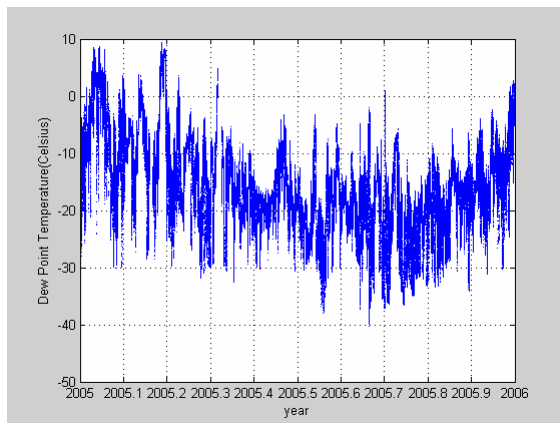
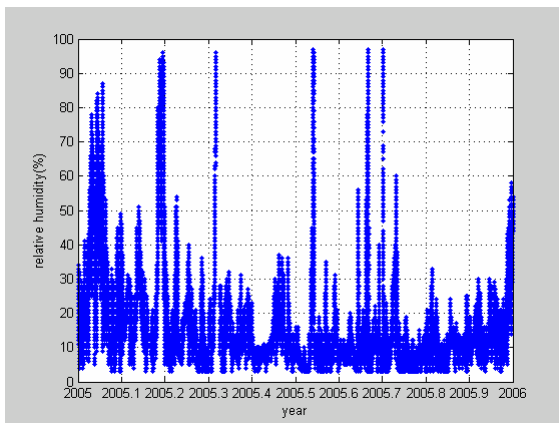
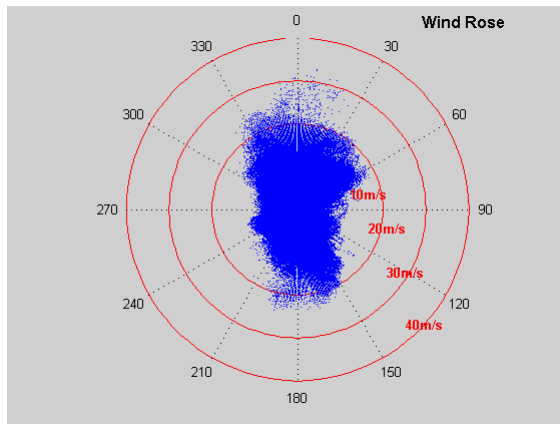
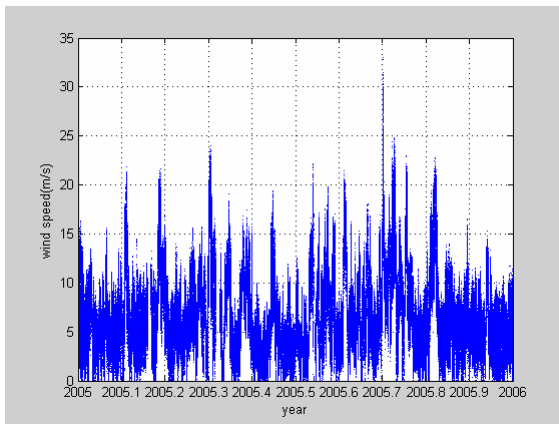
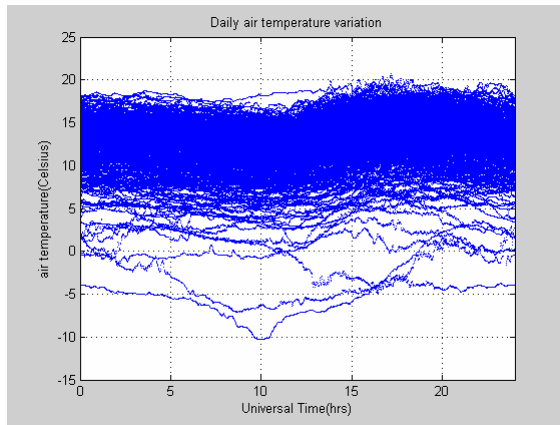
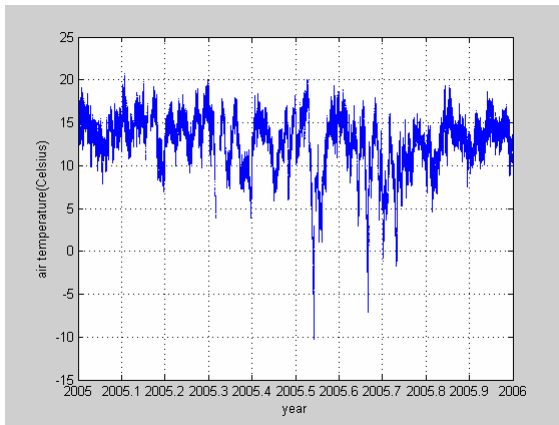
Wind, Temperature and Relative Humidity Statistics, Paranal 2003

	<i>minimum</i>	<i>5%</i>	<i>median</i>	<i>average</i>	<i>95%</i>	<i>maximum</i>	<i>samples</i>
Temperature at 30m	-0.48	8.1	13.85	13.43	16.82	20.54	514058
Temperature at 2m	-0.65	8.11	13.99	13.68	17.89	23.47	514058
Relative Humidity at 30m	3	4	11	14	37	97	514058
Relative Humidity at 2m	3	4	11	14	36	98	514058
Dew Point Temp. at 30m	-40.57	-28.53	-16.35	-15.74	-1.8	10.00	514058
Wind speed at 30m	0	1.35	5.5	6.13	13.28	26.13	514058
Wind speed at 10m	0	1.05	4.88	5.54	12.57	25.18	514058



Wind, Temperature and Relative Humidity Statistics, Paranal 2004

	<i>minimum</i>	<i>5%</i>	<i>median</i>	<i>average</i>	<i>95%</i>	<i>maximum</i>	<i>samples</i>
Temperature at 30m	-0.16	7.71	13.02	12.71	16.83	21.62	517821
Temperature at 2m	-0.48	7.43	13.25	12.93	17.58	23.64	517821
Relative Humidity at 30m	3	4	13	17	48	94	517821
Relative Humidity at 2m	3	5	13	17	47	94	517821
Dew Point Temp. at 30m	-37.80	-27.81	-15.32	-14.44	0.73	8.20	517821
Wind speed at 30m	0	1.52	6.05	6.91	15.3	26.85	517821
Wind speed at 10m	0	1.3	5.68	6.51	14.7	25.9	517821



Wind, Temperature and Relative Humidity Statistics, Paranal 2005

	<i>minimum</i>	<i>5%</i>	<i>median</i>	<i>average</i>	<i>95%</i>	<i>maximum</i>	<i>samples</i>
Temperature at 30m	-10.3	6.43	13.24	12.61	16.73	20.72	514434
Temperature at 2m	-10.24	6.48	13.38	12.84	17.7	23.42	514434
Relative Humidity at 30m	3	4	11	16	42	97	514434
Relative Humidity at 2m	3	4	12	16	41	98	514434
Dew Point Temp. at 30m	-40.22	-28.86	-16.47	-15.67	-0.34	9.42	514434
Wind speed at 30m	0	1.3	5.78	6.45	13.93	32.98	514434
Wind speed at 10m	0	1.15	5.33	5.92	12.68	32.78	514434

