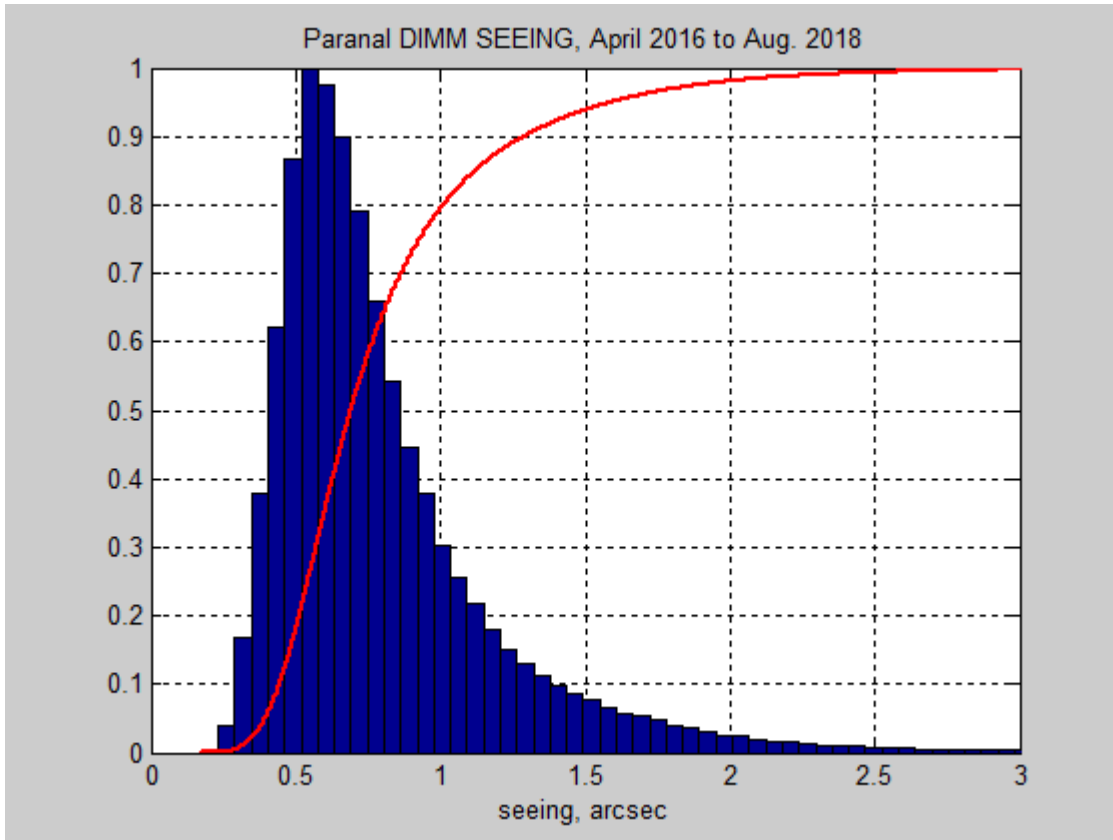
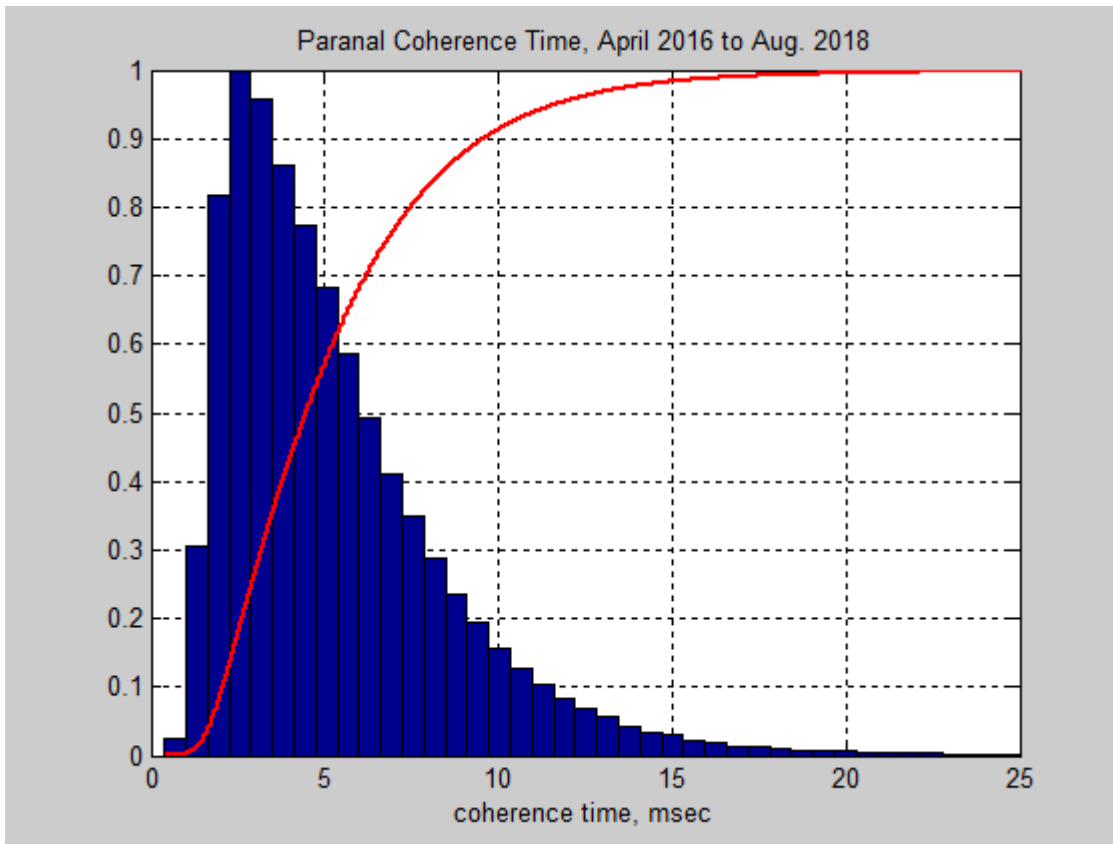


Statistics of Paranal DIMM Seeing, April 2016 to Aug. 2018



	10%	25%	50%	mean	75%	90%	Std. Dev.	samples
DIMM SEEING, arcsec	0.44	0.54	0.69	0.80	0.93	1.29	0.40	350655

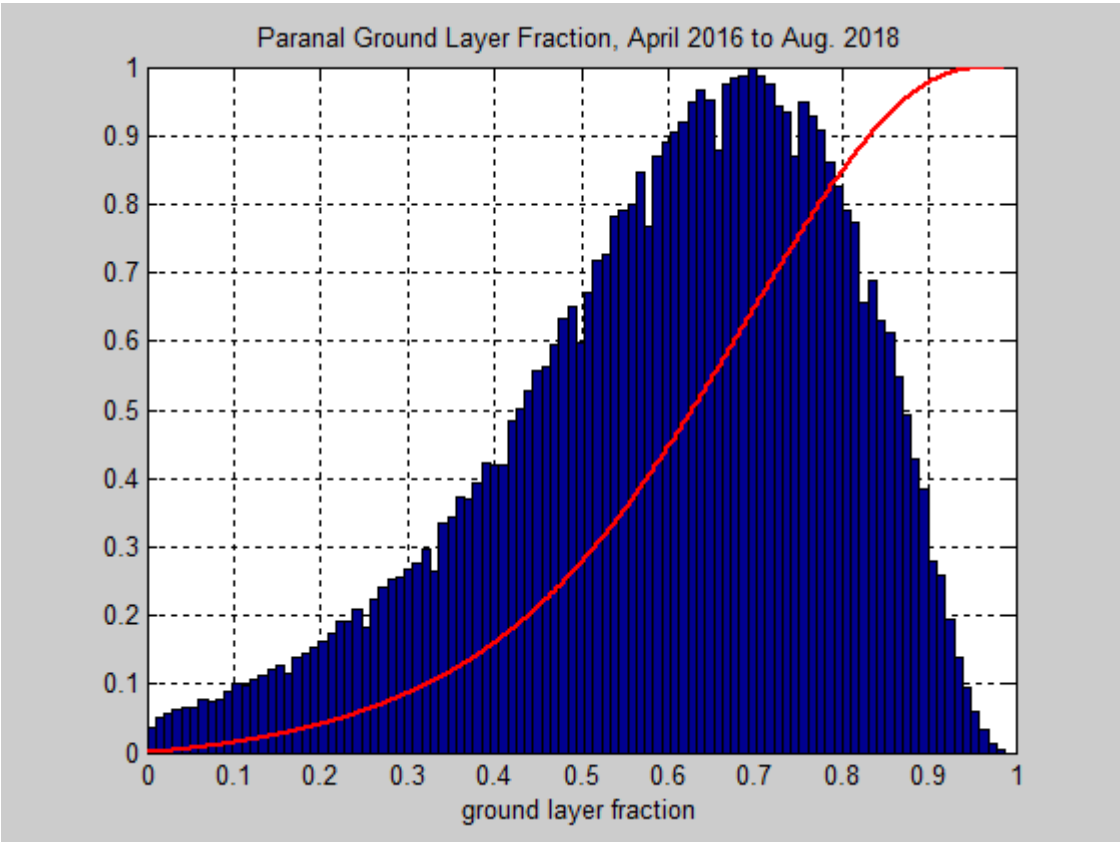
Statistics of Paranal Coherence Time, April 2016 to Aug. 2018



	10%	25%	50%	mean	75%	90%	Std. Dev.	samples
Coherence time, msec	2.07	2.91	4.46	5.30	6.77	9.58	3.38	277804

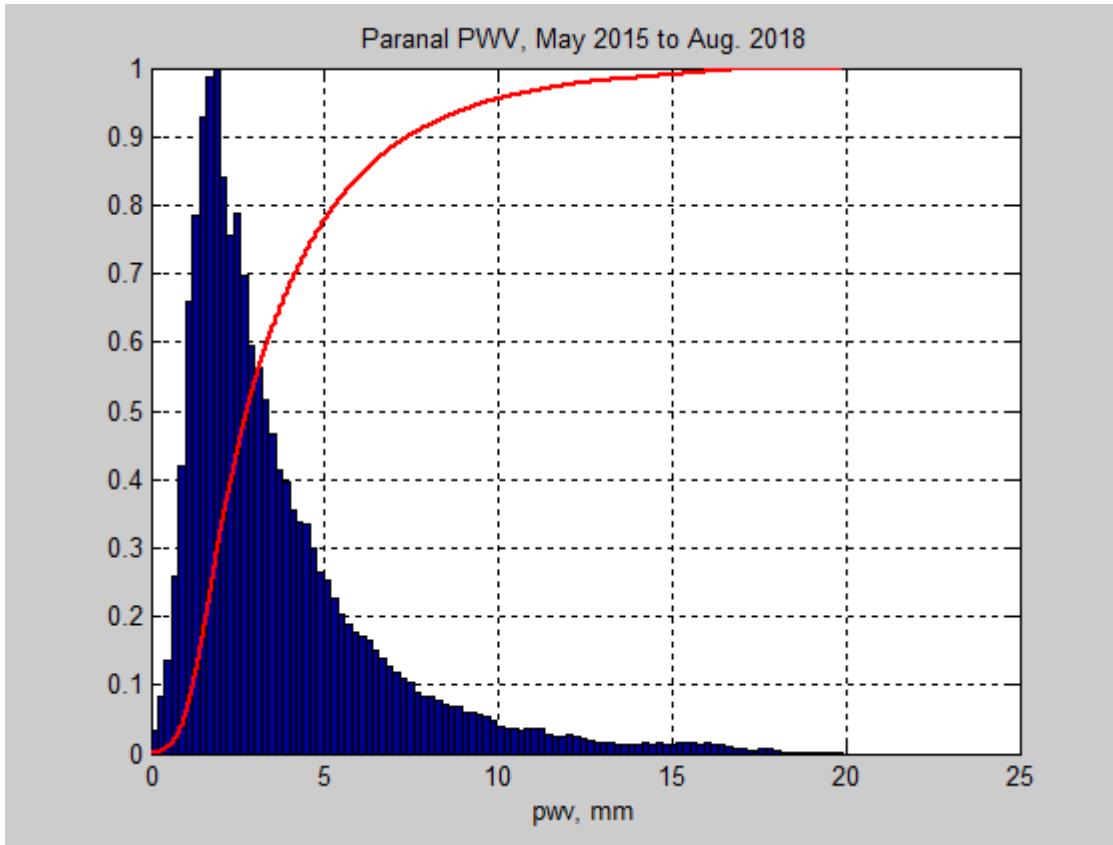
Statistics of Paranal Ground Layer Fraction (< 300mts)

April 2016 to Aug. 2018



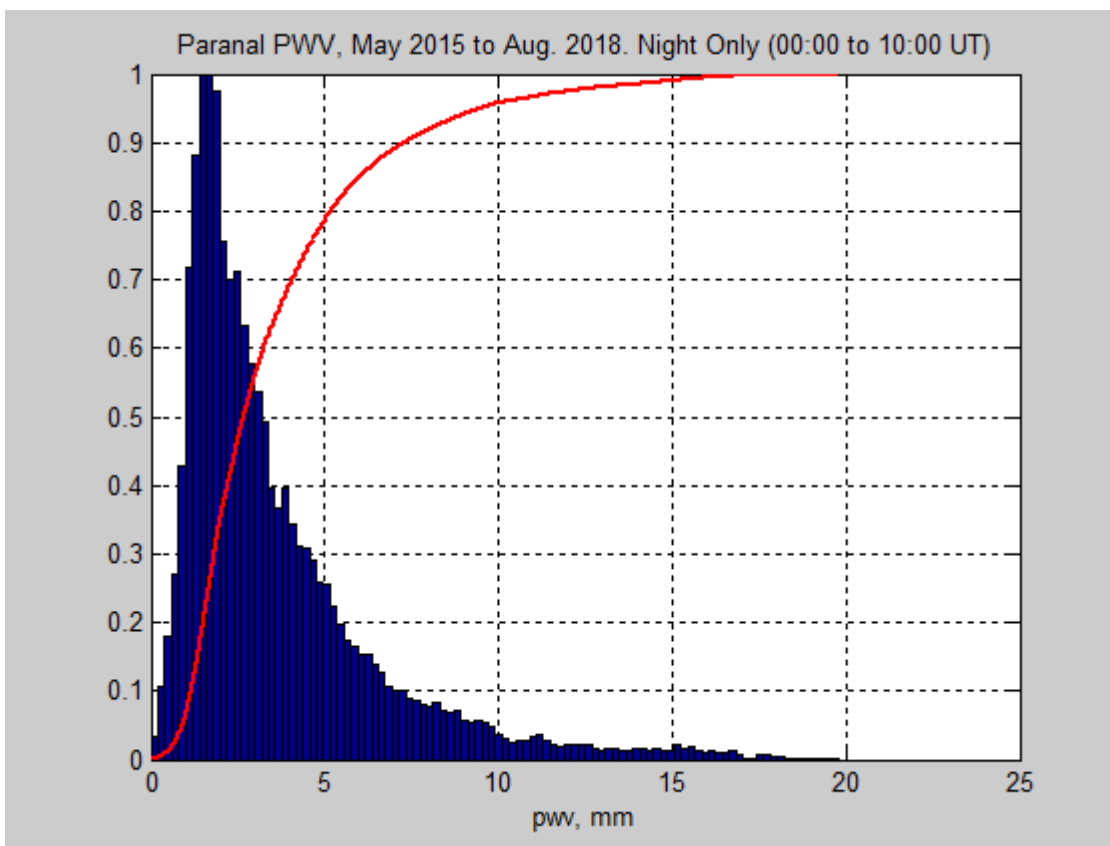
	10%	25%	50%	mean	75%	90%	Std. Dev.	samples
GLF < 300 mts.	0.32	0.48	0.63	0.60	0.75	0.83	0.20	282216

Statistics of Paranal PWV, May 2015 to Aug. 2018 (all data)



	10%	25%	50%	mean	75%	90%	Std. Dev.	samples
PWV (all data) mm	1.22	1.76	2.77	3.69	4.65	7.40	2.88	749265

Statistics of Paranal PWV, May 2015 to Aug. 2018 (Night Only)



	10%	25%	50%	mean	75%	90%	Std. Dev.	samples
PWV (night only) mm	1.16	1.67	2.68	3.60	4.56	7.30	2.88	315009