

# GIRAFFE Archive of Science ready spectra

Frédéric ROYER

GEPI – Observatoire de Paris

Six years of FLAMES



- Prugniel P. (CRAL, Lyon)
- Jégouzo I. (GEPI, Obs. Paris)
- Chilingarian I. (LERMA, Obs. Paris)
- Tajahmady F. (GEPI, Obs. Paris)
- Toupet P. (GEPI, Obs. Paris)
- Le Sidaner P. (VO Paris, Obs. Paris)
- Paillous M. (GEPI, Obs. Paris)
- Blecha A. (Obs. Genève)

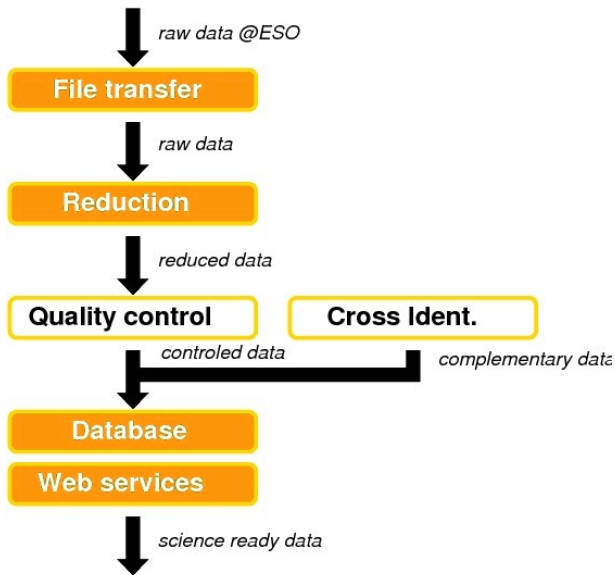
In the ESO Archive, for multi-object GIRAFFE observations:

- one cannot directly query the target coordinates or magnitudes
- only raw data available

## **Aim of the GIRAFFE Archive:**

- direct selection on object coordinates/magnitudes
- quick-look of reduced spectra

# Data Flow



Use of the CPL-based ESO pipeline:

- **gimasterbias**
- **gimasterflat**
- **giwavecalibration**
- **giscience** (no dark, optimal extraction, no skysub, no image recon.)

Standard science products (`science_rbnspectra.fits`) are archived.

Data are stored in the database as they output from the pipeline, they are identified by their dataset\_ID (“GIRAF.YYYY-MM-DDT-HH:MM:SS.SSS”).

The database system is based on Pleinpot (Prugniel et al., HyperLEDA, ÉLODIE), with Postgresql.

Two main tables of the database are used:

- data relative to the observation fields
- data relative to the individual buttons

GIRAFFE Archive [giraffe.archive@obspm.fr](mailto:giraffe.archive@obspm.fr)

**search**  
Multi-criteria search of GIRAFFE released observations

**help**  
Help on selection parameters, reduction recipes, file formats ...

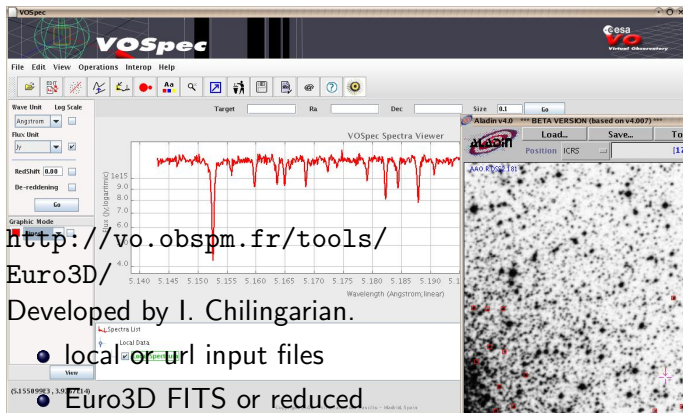
**description**  
Description of the GIRAFFE Archive project

**content**  
Visualisation of the archive content (**disabled**)

**ANNOUNCEMENTS**

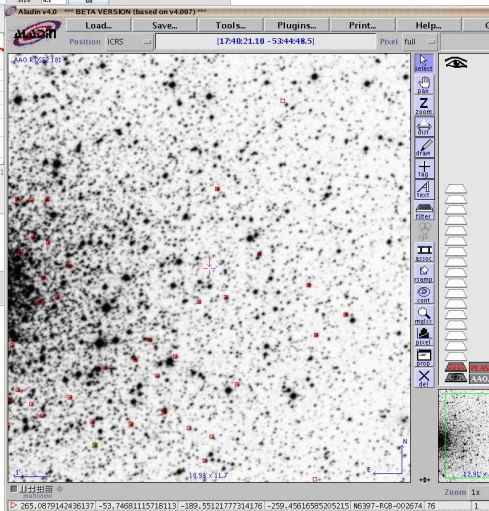
- [2008-12-02] The release 2.0 of the GIRAFFE Archive is open. The data observed between 2003 and 2005 are being fed in the Archive. Any comments or remarks about the Archive can be sent by email.

# VO-Paris Euro3D client



<http://vo.obspm.fr/tools/Euro3D/>  
Developed by I. Chilingarian.

- local or url input files
- Euro3D FITS or reduced GIRAFFE format
- communication with CDS Aladin and ESA VOSpec using PLASTIC



# Further Developments

- VO access: SSA to fields and buttons spectra (VO Paris portal).
- Add download functionalities.
- Implement the quality control on the reduction (dark, sky).
- Add complementary data
  - ▶ Matisse
  - ▶ photometric catalogs (2MASS, USNO-B, ...), cross-ID using accurate positions